

LEA Name : Cocalico SD  
Address : 800 4th Street  
Denver, PA 17517

County : Lancaster  
AUN Number : 113361303  
LEA Type : SD

## Annual Financial Report Accuracy Certification Statement

For Fiscal Year Ending  
**6/30/2023**

Pennsylvania Department of Education  
&  
Office of Comptroller Operations

PDE-2056: Intermediate Unit  
PDE-2057: School District, AVTS/CTC, Charter School,  
and Special Program Jointure

**CERTIFICATION: By signing this page I agree that the electronic data submitted is a complete and accurate statement of the financial operations and status of the local education agency for the fiscal year. It has been prepared in accordance with generally accepted accounting principles and established Commonwealth of PA reporting guidelines.**

*Olga Yussner*  
Chief School Administrator Signature

10/20/23  
Date

*Carla M. Foust*  
Board Secretary Signature

10/20/23  
Date

Lesley A Stricker  
Contact Person

(717)336-1405 Ext :  
Contact Person Telephone Number

lstricker@cocalico.org  
Contact Person E-mail Address

(717)336-1415  
Contact Person Fax Number

**Audit Certification**  
**Annual Financial Report:**  
For Fiscal Year Ending **6/30/2023**  
**(Pursuant to PA School Code Section 218(b))**

LEA Name : Cocalico SD  
AUN Number : 113361303  
County : Lancaster

<b>Audit Certification Due:</b> 12/31/2023
---

**This certification is applicable to the Annual Financial Report data submitted through the Consolidated Financial Reporting System (CFRS).**

CERTIFICATION: By signing this page I agree that the financial statements of the school have been properly audited as noted above pursuant to Article XXIV, and in the auditor's professional opinion, the Annual Financial Report (PDE-2057) submitted through CFRS is materially consistent with the audited financial statements.

Chief School Administrator

Alle Myrner  
Signature

10/20/23  
Date

Board Secretary

Cara M. Fomit  
Signature

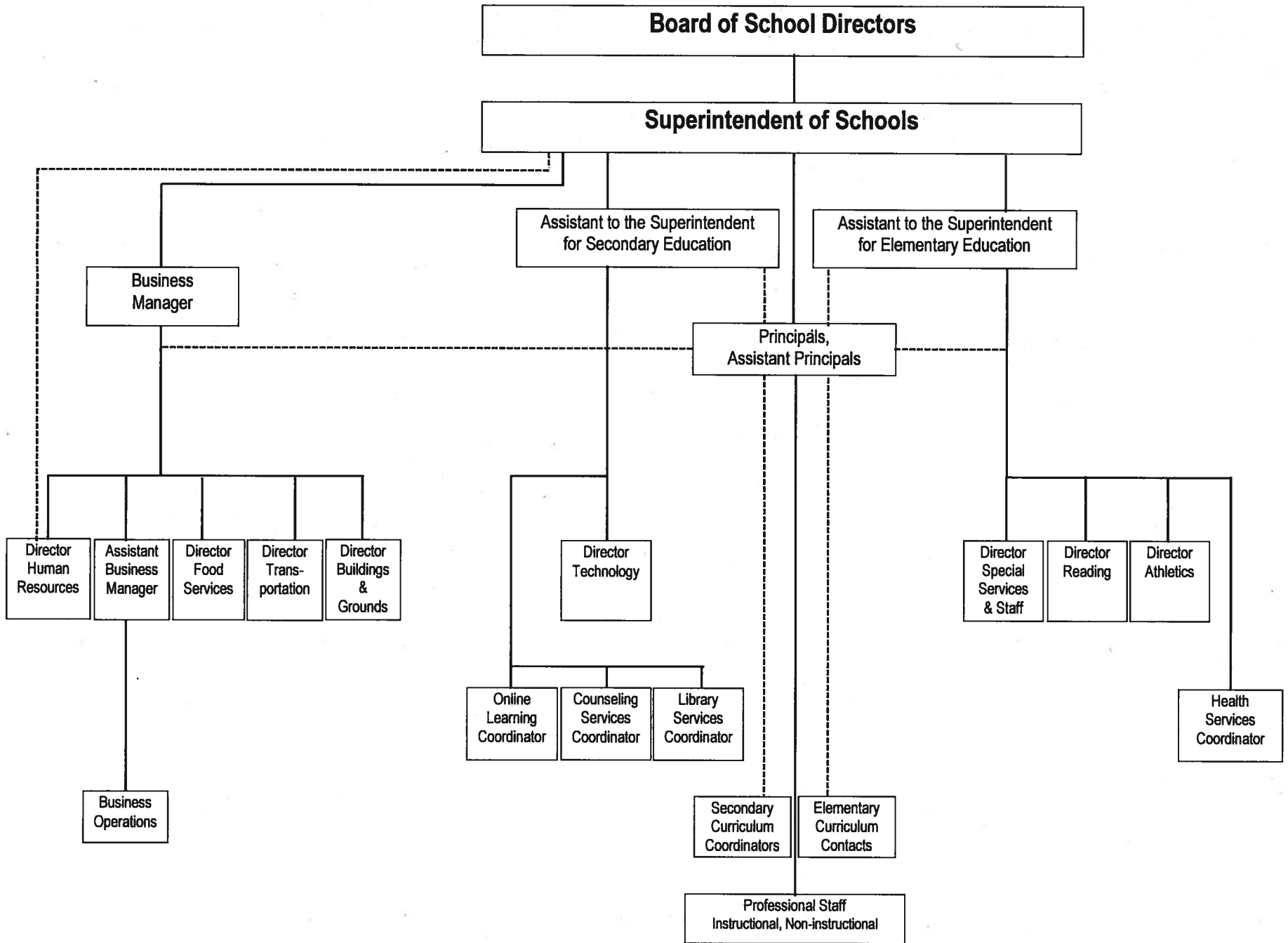
10/20/23  
Date

Lesley A Stricker  
\_\_\_\_\_  
Contact Person

lstricker@cocalico.org  
\_\_\_\_\_  
Contact Person E-mail Address

(717)336-1405      Ext :  
\_\_\_\_\_  
Contact Person Telephone Number

(717)336-1415  
\_\_\_\_\_  
Contact Person Fax Number





Book	Policy Manual
Section	600 Finances
Title	GASB Statement 34
Code	622
Status	Active
Adopted	July 20, 2009

### **Purpose**

The district shall follow the requirements set forth by the Governmental Accounting Standards Board Statement No. 34 as it pertains to capital asset reporting.[\[1\]](#)

The primary objectives of implementing the GASB Statement 34 are to assure compliance with state requirements, and properly account for both the financial and economic resources of the district.

### **Definition**

Capital assets shall include land, improvements to land, easements, buildings and building additions, building improvements, furniture, fixtures and equipment, vehicles, works of art and historical treasures, construction-in-progress and infrastructure. Capital assets are tangible assets used in operations and have initial useful lives extending beyond a single reporting period. Equipment will not change its original shape, appearance or character with use and it can be expected to last more than one (1) year with reasonable care and maintenance.

### **Authority**

Participation of the school district in any such activity shall be in accordance with Board policy.[\[2\]](#)

### **Delegation of Responsibility**

The responsibility to coordinate the compilation and preparation of all information necessary to implement this policy in accordance with district administrative procedures is delegated to the Business Manager, in cooperation with the local independent auditor.

The designated individual shall be responsible for implementing the necessary procedures to establish and maintain a fixed asset inventory, including depreciation schedules. Depreciation shall be computed on a straight-line basis over the estimated useful lives of the assets, using an averaging convention. Normal maintenance and repairs shall be charged to expense as incurred; major renewals and betterments that materially extend the life or increase the value of the asset shall be capitalized. A schedule of accumulated depreciation shall be consistent from year to year. The basis for depreciation, including groups of assets and useful lives, shall be in writing and submitted for review to the Board and independent auditors.

The Business Manager shall prepare the required Management Discussion and Analysis (MD&A). The MD&A shall be in the form required by GASB Statement 34 and shall be submitted to the Board for approval, prior to publication.

Prior to submission of the MD&A for Board approval, the district's independent auditors shall review the MD&A, in accordance with SAS No. 52, "Required Supplementary Information".

### **Guidelines**

In order to associate debt with acquired assets and to avoid net asset deficits, any asset that has been acquired with debt proceeds shall be capitalized, regardless of the cost of the asset. The asset life of these assets shall be considered relative to the time of the respective debt amortizations.

The capitalization threshold shall be set at a level that will capture at least 80% of all fixed assets.

The assets listed below do not normally individually meet capitalization threshold criteria:

1. Library books.
2. Classroom texts.
3. Computer equipment.
4. Classroom furniture.

These asset category costs shall be capitalized and depreciated as groups when that group's acquisition cost exceeds the capitalization threshold in any given fiscal year.

For group asset depreciation purposes, the estimated useful life of the group may be based on the weighted average or simple average of the useful life of individual items, or on an assessment of the life of the group as a whole. Periodically, the district shall review the estimated life of groups of assets and adjust the remaining depreciation life of the group.

Assets that fall below the capitalization threshold for GASB 34 reporting purposes may still be significant for insurance, warranty service, and obsolescence/replacement policy tracking purposes. The district may record and maintain these non-GASB 34 asset inventories in subsidiary ledgers.

A capitalized asset shall be any asset acquired by donation or purchase that has a useful life of longer than one (1) year or extends the life of another capitalized asset or increases its value and meets a specific dollar threshold. At management's discretion, and in conjunction with the local auditor, capital assets purchased with long-term debt may be capitalized regardless of the specific dollar threshold for the type of class or asset acquired.

#### Value of Assets

All capitalized assets shall be recorded at historical cost at acquisition date or estimated cost if acquired prior to the date of the initial inventory. Any donated capital asset shall be recorded at the date of donation using the fair market value of the item at that date.

#### Dollar Threshold

A dollar threshold for each asset shall be set at an appropriate level. Management shall periodically review these levels with assistance from the local independent auditor and make any necessary modifications.

Legal

[1. 24 P.S. 613](#)

[2. 24 P.S. 218](#)

Governmental Accounting Standards Board, Statement No. 34

<u>Val Number</u>	<u>Description</u>	<u>Justification</u>
41005	Expenditures have been reported in Function 1700 – Higher Education Programs for Secondary Students. Please confirm that these costs were for services provided to your school’s secondary students. NOTE: Adult education programs and Community College sponsorship should be coded to Function 1600.  Exp detail, Fund 10, Function 1700 total \$1,197.00	Yes, tuition was paid for one of our HS students.
42420	Expenditure Detail: Total current year 2700-513 expenditure varies from prior year by 10%. Correct the data or enter a justification.  2700-513, AFR Exp Detail: \$2,895,966.33 2700-513, PY AFR Amount: \$2,621,346.10	Bus contract is based on CPI. The CPI increase was 7% for last year. Also the cost of bus aides increased by 7%.

Amounts Expressed in Whole Dollars

	<u>General Fund</u> <u>(10)</u>	<u>Student Sponsored</u> <u>Activity Fund</u> <u>(21)</u>	<u>Public Purpose Trust</u> <u>(27)</u>	<u>Other Compt Approved</u> <u>(28)</u>	<u>Athletic / Activity</u> <u>(29)</u>
<b>Assets And Deferred Outflows Of Resources</b>					
<b>Assets</b>					
0100 Cash and Cash Equivalents	23,486,065	80,911			
0110 Investments					
0120 Taxes Receivable	1,246,463				
0130 Due From Other Funds	79,518				
0141 Due From Other Governments	2,966,760				
0142 State Revenue Receivable					
0143 Federal Revenue Receivable					
0145 Other Intergovernmental Revenue Receivable					
0146 Due from Primary Government					
0147 Due from Component Unit					
0150 Other Receivables	42,525				
0170 Inventories	46,855				
0180 Prepaid Expenses (Expenditures)	5,650				
0190 Other Current Assets					
<b>Total Assets</b>	<b>\$27,873,836</b>	<b>\$80,911</b>			
0910 Deferred Outflows of Resources					
<b>Total Assets And Deferred Outflows Of Resources</b>	<b>\$27,873,836</b>	<b>\$80,911</b>			

Amounts Expressed in Whole Dollars

	<u>Capital Reserve (690.</u> <u>1850)</u> <u>(31)</u>	<u>Capital Reserve (1431)</u> <u>(32)</u>	<u>Other Capital Projects</u> <u>Fund</u> <u>(39)</u>	<u>Debt Service</u> <u>(40)</u>	<u>Permanent</u> <u>(90)</u>
<b>Assets And Deferred Outflows Of Resources</b>					
<b>Assets</b>					
0100 Cash and Cash Equivalents		7,069,791	8		
0110 Investments					
0120 Taxes Receivable					
0130 Due From Other Funds		3,346,341			
0141 Due From Other Governments					
0142 State Revenue Receivable					
0143 Federal Revenue Receivable					
0145 Other Intergovernmental Revenue Receivable					
0146 Due from Primary Government					
0147 Due from Component Unit					
0150 Other Receivables					
0170 Inventories					
0180 Prepaid Expenses (Expenditures)					
0190 Other Current Assets					
<b>Total Assets</b>		<b>\$10,416,132</b>	<b>\$8</b>		
0910 Deferred Outflows of Resources					
<b>Total Assets And Deferred Outflows Of Resources</b>		<b>\$10,416,132</b>	<b>\$8</b>		



Amounts Expressed in Whole Dollars

**Total Governmental Funds**

**Assets And Deferred Outflows Of Resources**

<b>Assets</b>	
0100 Cash and Cash Equivalents	30,636,775
0110 Investments	
0120 Taxes Receivable	1,246,463
0130 Due From Other Funds	3,425,859
0141 Due From Other Governments	2,966,760
0142 State Revenue Receivable	
0143 Federal Revenue Receivable	
0145 Other Intergovernmental Revenue Receivable	
0146 Due from Primary Government	
0147 Due from Component Unit	
0150 Other Receivables	42,525
0170 Inventories	46,855
0180 Prepaid Expenses (Expenditures)	5,650
0190 Other Current Assets	
<b>Total Assets</b>	<b>\$38,370,887</b>
0910 Deferred Outflows of Resources	
<b>Total Assets And Deferred Outflows Of Resources</b>	<b>\$38,370,887</b>

LEA : 113361303 Cocalico SD

Printed 10/31/2023 11:36:12 AM

Amounts Expressed in Whole Dollars

	<u>General Fund</u> <u>(10)</u>	<u>Student Sponsored</u> <u>Activity Fund</u> <u>(21)</u>	<u>Public Purpose Trust</u> <u>(27)</u>	<u>Other Compt Approved</u> <u>(28)</u>	<u>Athletic / Activity</u> <u>(29)</u>
<b>Liabilities And Deferred Inflows Of Resources And Fund Balances</b>					
<b>Liabilities</b>					
0400 Due to Other Funds	3,505,500				
0411 Due to Other Governments	825,719				
0412 Due to Primary Government					
0413 Due to Component Unit					
0420 Accounts Payable	359,958				
0430 Contracts Payable					
0440 Current Portion of Long-Term Debt					
0450 Short-Term Payables					
0461 Accrued Salaries and Benefits	6,213,057				
0462 Payroll Deductions and Withholding					
0480 Unearned Revenues	127,818				
0490 Other Current Liabilities	206,524				
<b>Total Liabilities</b>	<b>\$11,238,576</b>				
0950 Deferred Inflows of Resources	367,339				
<b>Fund Balances</b>					
0810 Nonspendable Fund Balance	52,505				
0820 Restricted Fund Balance					
0830 Committed Fund Balance	8,820,000				
0840 Assigned Fund Balance	1,516,373	80,911			
0850 Unassigned Fund Balance	5,879,043				
<b>Total Fund Balances</b>	<b>\$16,267,921</b>	<b>\$80,911</b>			
<b>Total Liabilities, Deferred Inflows Of Resources And Fund Balances</b>	<b>\$27,873,836</b>	<b>\$80,911</b>			

LEA : 113361303 Cocalico SD

Printed 10/31/2023 11:36:12 AM

Amounts Expressed in Whole Dollars	<u>Capital Reserve (690.</u> <u>1850)</u> <u>(31)</u>	<u>Capital Reserve (1431)</u> <u>(32)</u>	<u>Other Capital Projects</u> <u>Fund</u> <u>(39)</u>	<u>Debt Service</u> <u>(40)</u>	<u>Permanent</u> <u>(90)</u>
<b>Liabilities And Deferred Inflows Of Resources And Fund Balances</b>					
<b>Liabilities</b>					
0400 Due to Other Funds					
0411 Due to Other Governments					
0412 Due to Primary Government					
0413 Due to Component Unit					
0420 Accounts Payable		960,034			
0430 Contracts Payable					
0440 Current Portion of Long-Term Debt					
0450 Short-Term Payables					
0461 Accrued Salaries and Benefits					
0462 Payroll Deductions and Withholding					
0480 Unearned Revenues					
0490 Other Current Liabilities					
<b>Total Liabilities</b>		<b>\$960,034</b>			
0950 Deferred Inflows of Resources					
<b>Fund Balances</b>					
0810 Nonspendable Fund Balance					
0820 Restricted Fund Balance		9,456,098	8		
0830 Committed Fund Balance					
0840 Assigned Fund Balance					
0850 Unassigned Fund Balance					
<b>Total Fund Balances</b>		<b>\$9,456,098</b>	<b>\$8</b>		
<b>Total Liabilities, Deferred Inflows Of Resources And Fund Balances</b>		<b>\$10,416,132</b>	<b>\$8</b>		

Amounts Expressed in Whole Dollars

**Total Governmental Funds**

**Liabilities And Deferred Inflows Of Resources And Fund Balances**

**Liabilities**

0400 Due to Other Funds	3,505,500
0411 Due to Other Governments	825,719
0412 Due to Primary Government	
0413 Due to Component Unit	
0420 Accounts Payable	1,319,992
0430 Contracts Payable	
0440 Current Portion of Long-Term Debt	
0450 Short-Term Payables	
0461 Accrued Salaries and Benefits	6,213,057
0462 Payroll Deductions and Withholding	
0480 Unearned Revenues	127,818
0490 Other Current Liabilities	206,524

**Total Liabilities \$12,198,610**

0950 Deferred Inflows of Resources	367,339
------------------------------------	---------

**Fund Balances**

0810 Nonspendable Fund Balance	52,505
0820 Restricted Fund Balance	9,456,106
0830 Committed Fund Balance	8,820,000
0840 Assigned Fund Balance	1,597,284
0850 Unassigned Fund Balance	5,879,043

**Total Fund Balances \$25,804,938**

**Total Liabilities, Deferred Inflows Of Resources And Fund Balances \$38,370,887**

Amounts Expressed in Whole Dollars	<u>General Fund</u> <u>(10)</u>	<u>Student Sponsored</u> <u>Activity Fund</u> <u>(21)</u>	<u>Public Purpose Trust</u> <u>(27)</u>	<u>Other Compt Approved</u> <u>(28)</u>	<u>Athletic / Activity</u> <u>(29)</u>
<b>Revenues</b>					
6000 Revenue from Local Sources	44,442,810	117,220			
7000 Revenue from State Sources	19,765,262				
8000 Revenue from Federal Sources	1,857,366				
<b>Total Revenues</b>	<b>\$66,065,438</b>	<b>\$117,220</b>			
<b>Expenditures</b>					
1000 Instruction	41,548,805				
2000 Support Services	20,023,761				
3000 Operation of Non-Instructional Services	1,318,637	113,963			
4000 Facilities Acquisition, Construction and Improvement Services					
5110 Debt Service					
5130 Refund of Prior Year Revenues / Receipts	9,521				
5140 Leases and Other Right-to-Use Arrangements	477,259				
<b>Total Expenditures</b>	<b>\$63,377,983</b>	<b>\$113,963</b>			
<b>Excess (Deficiency) Of Revenues Over Expenditures</b>	<b>\$2,687,455</b>	<b>\$3,257</b>			
<b>Other Financing Sources (Uses)</b>					
9110 Face Value of Bonds Issued					
9120 Proceeds from Refunding of Bonds					
9130 Bond Premiums					
9200 Proceeds from Extended Term Financing, Leases, and Other Right-to-Use Arrangements	402,391				
9300 Interfund Transfers - IN					
9400 Sale of or Compensation for Loss of Fixed Assets	44,496				
9710 Transfers from Component Units					
9720 Transfers from Primary Governments					
9910 Other Financing Sources Not Listed in the 9000 Series					
9990 Insurance Recoveries					
5120 Debt Service – Refunded Bonds					
5150 Bond Discounts					
5200 Interfund Transfers – Out	5,001,999				
5300 Transfers Out to Component Units/Primary Governments					
<b>Total Other Financing Sources (Uses)</b>	<b>(\$4,555,112)</b>				

Amounts Expressed in Whole Dollars	<u>Capital Reserve (690.1850)</u> <u>(31)</u>	<u>Capital Reserve (1431)</u> <u>(32)</u>	<u>Other Capital Projects</u> <u>Fund</u> <u>(39)</u>	<u>Debt Service</u> <u>(40)</u>	<u>Permanent</u> <u>(90)</u>
<b>Revenues</b>					
6000 Revenue from Local Sources		278,201	79,933		
7000 Revenue from State Sources					
8000 Revenue from Federal Sources					
<b>Total Revenues</b>		<b>\$278,201</b>	<b>\$79,933</b>		
<b>Expenditures</b>					
1000 Instruction					
2000 Support Services		344,162	1,035,785	500	
3000 Operation of Non-Instructional Services					
4000 Facilities Acquisition, Construction and Improvement Services		3,308,321	8,172,038		
5110 Debt Service				1,655,158	
5130 Refund of Prior Year Revenues / Receipts					
5140 Leases and Other Right-to-Use Arrangements					
<b>Total Expenditures</b>		<b>\$3,652,483</b>	<b>\$9,207,823</b>	<b>\$1,655,658</b>	
<b>Excess (Deficiency) Of Revenues Over Expenditures</b>		<b>(\$3,374,282)</b>	<b>(\$9,127,890)</b>	<b>(\$1,655,658)</b>	
<b>Other Financing Sources (Uses)</b>					
9110 Face Value of Bonds Issued					
9120 Proceeds from Refunding of Bonds					
9130 Bond Premiums					
9200 Proceeds from Extended Term Financing, Leases, and Other Right-to-Use Arrangements					
9300 Interfund Transfers - IN		3,346,341		1,655,658	
9400 Sale of or Compensation for Loss of Fixed Assets					
9710 Transfers from Component Units					
9720 Transfers from Primary Governments					
9910 Other Financing Sources Not Listed in the 9000 Series					
9990 Insurance Recoveries					
5120 Debt Service – Refunded Bonds					
5150 Bond Discounts					
5200 Interfund Transfers – Out					
5300 Transfers Out to Component Units/Primary Governments					
<b>Total Other Financing Sources (Uses)</b>		<b>\$3,346,341</b>		<b>\$1,655,658</b>	

Amounts Expressed in Whole Dollars	<u>Total Governmental Funds</u>
<b>Revenues</b>	
6000 Revenue from Local Sources	44,918,164
7000 Revenue from State Sources	19,765,262
8000 Revenue from Federal Sources	1,857,366
<b>Total Revenues</b>	<b>\$66,540,792</b>
<b>Expenditures</b>	
1000 Instruction	41,548,805
2000 Support Services	21,404,208
3000 Operation of Non-Instructional Services	1,432,600
4000 Facilities Acquisition, Construction and Improvement Services	11,480,359
5110 Debt Service	1,655,158
5130 Refund of Prior Year Revenues / Receipts	9,521
5140 Leases and Other Right-to-Use Arrangements	477,259
<b>Total Expenditures</b>	<b>\$78,007,910</b>
<b>Excess (Deficiency) Of Revenues Over Expenditures</b>	<b>(\$11,467,118)</b>
<b>Other Financing Sources (Uses)</b>	
9110 Face Value of Bonds Issued	
9120 Proceeds from Refunding of Bonds	
9130 Bond Premiums	
9200 Proceeds from Extended Term Financing, Leases, and Other Right-to-Use Arrangements	402,391
9300 Interfund Transfers - IN	5,001,999
9400 Sale of or Compensation for Loss of Fixed Assets	44,496
9710 Transfers from Component Units	
9720 Transfers from Primary Governments	
9910 Other Financing Sources Not Listed in the 9000 Series	
9990 Insurance Recoveries	
5120 Debt Service – Refunded Bonds	
5150 Bond Discounts	
5200 Interfund Transfers – Out	5,001,999
5300 Transfers Out to Component Units/Primary Governments	
<b>Total Other Financing Sources (Uses)</b>	<b>\$446,887</b>

Amounts Expressed in Whole Dollars	<u>General Fund</u> <u>(10)</u>	<u>Student Sponsored</u> <u>Activity Fund</u> <u>(21)</u>	<u>Public Purpose Trust</u> <u>(27)</u>	<u>Other Compt Approved</u> <u>(28)</u>	<u>Athletic / Activity</u> <u>(29)</u>
<b>Special And Extraordinary Items</b>					
9920 Special Items – Gains					
9930 Extraordinary Items – Gains					
5520 Special Items – Losses					
5530 Extraordinary Items – Losses					
<b>Net Change In Fund Balances</b>	<b>(\$1,867,657)</b>	<b>\$3,257</b>			
<b>Fund Balance</b>					
0001 Fund Balance - Beginning of Fiscal Year	18,135,578	77,654			
<b>Fund Balance - End Of Year</b>	<b>\$16,267,921</b>	<b>\$80,911</b>			



Amounts Expressed in Whole Dollars	<u>Capital Reserve (690.1850)</u> <u>(31)</u>	<u>Capital Reserve (1431)</u> <u>(32)</u>	<u>Other Capital Projects</u> <u>Fund</u> <u>(39)</u>	<u>Debt Service</u> <u>(40)</u>	<u>Permanent</u> <u>(90)</u>
<b>Special And Extraordinary Items</b>					
9920 Special Items – Gains					
9930 Extraordinary Items – Gains					
5520 Special Items – Losses					
5530 Extraordinary Items – Losses					
<b>Net Change In Fund Balances</b>		<b>(\$27,941)</b>	<b>(\$9,127,890)</b>		
<b>Fund Balance</b>					
0001 Fund Balance - Beginning of Fiscal Year		9,484,039	9,127,898		
<b>Fund Balance - End Of Year</b>		<b>\$9,456,098</b>	<b>\$8</b>		

Amounts Expressed in Whole Dollars	<u>Total Governmental Funds</u>
<b>Special And Extraordinary Items</b>	
9920 Special Items – Gains	
9930 Extraordinary Items – Gains	
5520 Special Items – Losses	
5530 Extraordinary Items – Losses	
<b>Net Change In Fund Balances</b>	<b>(\$11,020,231)</b>
<b>Fund Balance</b>	
0001 Fund Balance - Beginning of Fiscal Year	36,825,169
<b>Fund Balance - End Of Year</b>	<b>\$25,804,938</b>

Amounts Expressed in Whole Dollars	<u>Food Service</u> <u>(51)</u>	<u>Child Care</u> <u>Operations</u> <u>(52)</u>	<u>Other Enterprise</u> <u>(58)</u>	<u>TOTAL</u>	<u>Internal Service</u> <u>(60)</u>
<b>Assets And Deferred Outflows Of Resources</b>					
<b>Current Assets</b>					
0100 Cash and Cash Equivalents	1,345,646			1,345,646	754,067
0110 Investments					
0130 Due From Other Funds	159,159			159,159	
0141 Due From Other Governments	282			282	
0142 State Revenue Receivable					
0143 Federal Revenue Receivable					
0146 Due from Primary Government					
0147 Due from Component Unit					
0150 Other Receivables	11,416			11,416	67,162
0170 Inventories	89,088			89,088	
0180 Prepaid Expenses (Expenditures)					
0190 Other Current Assets					
<b>Total Current Assets</b>	<b>\$1,605,591</b>			<b>\$1,605,591</b>	<b>\$821,229</b>
<b>Noncurrent Assets</b>					
0211 Land					
0212 Site Improvements (Net)					
0220 Buildings and Building Improvements (Net)					
0230 Tangible Property and Intangible Right-To-Use Assets (Net)					
0250 Construction in Progress					
0260 Long Term Prepayments					
0290 Other Noncurrent Assets	60,199			60,199	
<b>Total Noncurrent Assets</b>	<b>\$60,199</b>			<b>\$60,199</b>	
0910 Deferred Outflows of Resources	322,116			322,116	
<b>Total Assets And Deferred Outflows Of Resources</b>	<b>\$1,987,906</b>			<b>\$1,987,906</b>	<b>\$821,229</b>

Amounts Expressed in Whole Dollars	<u>Food Service</u> <u>(51)</u>	<u>Child Care</u> <u>Operations</u> <u>(52)</u>	<u>Other Enterprise</u> <u>(58)</u>	<u>TOTAL</u>	<u>Internal Service</u> <u>(60)</u>
<b>Liabilities And Deferred Inflows Of Resources And Net Position</b>					
<b>Current Liabilities</b>					
0400 Due to Other Funds	79,286			79,286	
0411 Due to Other Governments					
0413 Due to Component Unit					
0420 Accounts Payable	482			482	602,045
0430 Contracts Payable					
0440 Current Portion of Long-Term Debt					
0450 Short-Term Payables					
0461 Accrued Salaries and Benefits	1,898			1,898	
0462 Payroll Deductions and Withholding					
0480 Unearned Revenues	89,073			89,073	
0490 Other Current Liabilities	3,700			3,700	
<b>Total Current Liabilities</b>	<b>\$174,439</b>			<b>\$174,439</b>	<b>\$602,045</b>
<b>Noncurrent Liabilities</b>					
0510 Bonds Payable					
0520 Extended-Term Financing Agreements Payable					
0530 Lease and Other Right-To-Use Obligations					
0540 Accumulated Compensated Absences	73,300			73,300	
0550 Authority Lease Obligations					
0560 Other Post-Employment Benefits (OPEB)	130,482			130,482	
0570 Net Pension Liability	1,612,960			1,612,960	
0599 Other Noncurrent Liabilities					
<b>Total Noncurrent Liabilities</b>	<b>\$1,816,742</b>			<b>\$1,816,742</b>	
<b>Total Liabilities</b>	<b>\$1,991,181</b>			<b>\$1,991,181</b>	<b>\$602,045</b>
0950 Deferred Inflows of Resources	108,077			108,077	
<b>Net Position</b>					
0791 Net Investment in Capital Assets	60,199			60,199	
0008 Restricted Net Position (0792 – 0798)					
0799 Unrestricted Net Position	(171,551)			(171,551)	219,184
<b>Total Net Position</b>	<b>(\$111,352)</b>			<b>(\$111,352)</b>	<b>\$219,184</b>
<b>Total Liabilities And Deferred Inflows Of Resources And Net Position</b>	<b>\$1,987,906</b>			<b>\$1,987,906</b>	<b>\$821,229</b>

Amounts Expressed in Whole Dollars	<u>Food Service</u> <u>(51)</u>	<u>Child Care Operations</u> <u>(52)</u>	<u>Other Enterprise</u> <u>(58)</u>	<u>TOTAL</u>	<u>Internal Service</u> <u>(60)</u>
<b>Operating Revenues</b>					
6600 Food Service Revenue	825,724			825,724	
0071 Charges for Services					8,400,000
0072 Other Operating Revenue					
<b>Total Operating Revenues</b>	<b>\$825,724</b>			<b>\$825,724</b>	<b>\$8,400,000</b>
<b>Operating Expenses</b>					
100 Personnel Services – Salaries	535,683			535,683	
200 Personnel Services – Employee Benefits	331,832			331,832	8,463,023
300 Purchased Professional and Technical Services	3,201			3,201	
400 Purchased Property Services	150			150	
500 Other Purchased Services					
600 Supplies	1,131,209			1,131,209	
740 Depreciation	6,511			6,511	
770 Amortization Expense					
810 Dues and Fees					
880 Refunds of Prior Years' Receipts					
890 Miscellaneous Expenditures	624			624	
<b>Total Operating Expenses</b>	<b>\$2,009,210</b>			<b>\$2,009,210</b>	<b>\$8,463,023</b>
<b>Operating Income (Loss)</b>	<b>(\$1,183,486)</b>			<b>(\$1,183,486)</b>	<b>(\$63,023)</b>
<b>Non Operating Revenues (Expenses)</b>					
6500 Earnings on Investments	16,839			16,839	3,921
6830 Federal Revenue from Intermediary Sources					
6920 Contributions and Donations from Private Sources					
6930 Gains or Losses on Sale of Fixed Assets					
6991 Refunds of a Prior Year Expenditure					
7000 Revenue from State Sources	296,727			296,727	
8000 Revenue from Federal Sources	1,206,445			1,206,445	
9990 Insurance Recoveries					
820 Claims and Judgments Against the LEA					
830 Interest					
<b>TOTAL Non Operating Revenues (Expenses)</b>	<b>\$1,520,011</b>			<b>\$1,520,011</b>	<b>\$3,921</b>
<b>Income (Loss) Before Contributions And Transfers</b>	<b>\$336,525</b>			<b>\$336,525</b>	<b>(\$59,102)</b>

Amounts Expressed in Whole Dollars	<u>Food Service</u> <u>(51)</u>	<u>Child Care Operations</u> <u>(52)</u>	<u>Other Enterprise</u> <u>(58)</u>	<u>TOTAL</u>	<u>Internal Service</u> <u>(60)</u>
<b>Contributions, Transfers, and Special and Extraordinary Items</b>					
5200 Interfund Transfers – Out					
5300 Transfers Out to Component Units/Primary Governments					
5520 Special Items – Losses					
5530 Extraordinary Items – Losses					
9300 Interfund Transfers - IN					
9500 Capital Contributions					
9700 Transfers IN From Component Units/Primary Governments					
9920 Special Items – Gains					
9930 Extraordinary Items – Gains					
<b>Change In Net Position</b>	<b>\$336,525</b>			<b>\$336,525</b>	<b>(\$59,102)</b>
0002 Net Position - Beginning of Fiscal Year	(447,877)			(447,877)	278,286
0003 Accounting Changes / Residual Equity Transfers					
<b>Net Position - End Of Year</b>	<b>(\$111,352)</b>			<b>(\$111,352)</b>	<b>\$219,184</b>

LEA : 113361303 Cocalico SD

Printed 10/31/2023 11:36:46 AM

Amounts Expressed in Whole Dollars	<u>Food Service</u> <u>(51)</u>	<u>Child Care Operations</u> <u>(52)</u>	<u>Other Enterprise</u> <u>(58)</u>	<u>TOTAL</u>	<u>Internal Service(60)</u>
<b>Cash Flows From Operating Activities</b>					
0011 Cash Receipts From Users	818,864			818,864	8,945,799
0012 Cash Receipts From Assessments Made to Other Funds					
0013 Cash Receipts From Earnings on Investments					
0014 Cash Receipts From Other Operating Revenue					
0015 Cash Payments To Employees For Services	915,717			915,717	
0016 Cash Payments For Insurance Claims					8,554,765
0017 Cash Payments To Suppliers For Goods and Services	1,048,040			1,048,040	
0018 Cash Payments For Other Operating Expenses					
<b>Net Cash Provided By (Used For) Operating Activities</b>	<b>(\$1,144,893)</b>			<b>(\$1,144,893)</b>	<b>\$391,034</b>
<b>Cash Flows From Non-Capital Financing Activities</b>					
0021 Receipts From Local Sources - 6000					
0022 Receipts From State Sources - 7000	299,427			299,427	
0023 Receipts From Federal Sources -8000	1,073,089			1,073,089	
0024 Notes and Loans Received (Repaid)					
0025 Interest Paid on Notes/Loans - 5100-830					
0026 Operating Transfers In (Out)/Residual Equity Trans					
0027 Operating Transfers In (Out) Primary Government / Comp Unit					
0028 Receipts From Refund of Prior Year Expenditures - 6991					
0029 Special and Extraordinary Gains (losses)					
0030 Receipts from Insurance Recoveries -9990					
<b>Net Cash Prov By (Used for) Non-Capital Financing Activities</b>	<b>\$1,372,516</b>			<b>\$1,372,516</b>	
<b>Cash Flows From Capital and Related Financing Activities</b>					
0031 Payments For Fac Acq, Const, and Imp - 4000	(26,061)			(26,061)	
0032 Gain / (Loss) on Sale of Fixed Assets - 6930					
0033 Proceeds From Extended Term Financing - 9200					
0034 Principal Paid on Financing Agreements					
0035 Interest Paid on Financing Agreements - 5100-830					
0036 (Inc) Dec in Contributed Capital					
<b>Net Cash Prov By (Used for) Capital and Related Financing Activities</b>	<b>(\$26,061)</b>			<b>(\$26,061)</b>	
<b>Cash Flows From Investing Activities</b>					
0041 Earnings on Investments - 6500	16,839			16,839	3,921
0042 Purchase of Inv Securities / Deposits to Inv Pools	159,854			159,854	
0043 Receipts From Investment Pool Withdrawals					
0044 Proceeds from Sale and Maturity of Inv Securities					

LEA : 113361303 Cocalico SD

Printed 10/31/2023 11:36:46 AM

0045 Loans Received (Paid)

<b>Net Cash Prov By (Used for) Investing Activities</b>	<b>\$176,693</b>	<b>\$176,693</b>	<b>\$3,921</b>
---	------------------	------------------	----------------



	<u>Food Service</u> <u>(51)</u>	<u>Child Care Operations</u> <u>(52)</u>	<u>Other Enterprise</u> <u>(58)</u>	<u>TOTAL</u>	<u>Internal Service</u> <u>(60)</u>
<b>Net Increase (Decrease) in Cash Flows</b>	<b>378,255</b>			<b>378,255</b>	<b>394,955</b>
0004 Cash and Cash Equivalents Beginning of Year	967,391			967,391	359,112
<b>Cash and Cash Equivalents at Year End</b>	<b>\$1,345,646</b>			<b>\$1,345,646</b>	<b>\$754,067</b>
<b>Reconciliation of Operating Income (Loss) To Net Cash Provided by (Used For) Operating Activities</b>					
0005 Operating Income (Loss) per REP	(1,183,486)			(1,183,486)	(63,023)
<b>Adjustments</b>					
0051 Depreciation and Net Amortization	6,511			6,511	
0052 Provision for Uncollectible Accounts					
0053 Other Adjustments	184,518			184,518	
<b>Effect of Changes in Assets, Liabilities, Deferred Outflows and Deferred Inflows</b>					
0054 (Inc) Dec In Accounts Receivable (0120-0150)	(10,013)			(10,013)	45,799
0055 Advances to Other Funds	(111,429)			(111,429)	500,000
0056 (Inc) Dec in Inventories (0170)	17,657			17,657	
0057 (Inc) Dec in Prepaid Expenses (0180)					
0058 (Inc) Dec in Other Current or Noncurrent Assets					
0064 Deferred Outflows (0910)	51,884			51,884	
0059 Inc (Dec) in Accounts Payable (0400-0450)	(3,602)			(3,602)	(91,742)
0060 Inc (Dec) in Accrued Salaries/Benefits (0461)	(7,174)			(7,174)	
0065 Inc (Dec) in Net Pension Liabilities (0570)	124,960			124,960	
0066 Inc (Dec) in Other Postemp Benefit Oblig (0560)	(54,518)			(54,518)	
0061 Inc (Dec) in Payroll Deductions/Withholding (0462)					
0062 Inc (Dec) in Unearned Revenue (0480)	3,153			3,153	
0063 Inc (Dec) in Other Current or Noncurrent Liabilities	569			569	
0067 Deferred Inflows (0950)	(163,923)			(163,923)	
<b>Total Adjustments</b>	<b>\$38,593</b>			<b>\$38,593</b>	<b>\$454,057</b>
<b>Cash Provided By (Used for) Total</b>	<b>(\$1,144,893)</b>			<b>(\$1,144,893)</b>	<b>\$391,034</b>

COMBINED STATEMENT OF CASH FLOWS  
SCHEDULE OF NONCASH INVESTING, CAPITAL, AND FINANCING ACTIVITIES

Explanation of Transaction and Balance Sheet Effect	Amount
<b>Total</b>	

LEA : 113361303 Cocalico SD

Printed 10/31/2023 11:36:49 AM

Amounts Expressed in Whole Dollars

Private Purpose Trust  
(71)

Investment Trust  
(72)

Pension Trust  
(73)

Student Activity Custodial  
(81)

**Assets And Deferred Outflows Of Resources**

<b>Assets</b>	
0100 Cash and Cash Equivalents	42,232
0110 Investments	
0130 Due From Other Funds	
0140 Due from Other Governments, Primary Government and Component Units	
0150 Other Receivables	126
0170 Inventories	
0180 Prepaid Expenses (Expenditures)	
0190 Other Current Assets	
0220 Buildings and Building Improvements (Net)	
0230 Tangible Property and Intangible Right-To-Use Assets (Net)	
<b>Total Assets</b>	<b>\$42,358</b>
0910 Deferred Outflows of Resources	
<b>Total Assets And Deferred Outflows Of Resources</b>	<b>\$42,358</b>

LEA : 113361303 Cocalico SD

Printed 10/31/2023 11:36:49 AM

Amounts Expressed in Whole Dollars	<u>Other Custodial</u> <u>(89)</u>	<u>Fiduciary Component Units</u> <u>(98)</u>	<u>Total Fiduciary Funds</u>
<b>Assets And Deferred Outflows Of Resources</b>			
<b>Assets</b>			
0100 Cash and Cash Equivalents			42,232
0110 Investments			
0130 Due From Other Funds			
0140 Due from Other Governments, Primary Government and Component Units			
0150 Other Receivables			126
0170 Inventories			
0180 Prepaid Expenses (Expenditures)			
0190 Other Current Assets			
0220 Buildings and Building Improvements (Net)			
0230 Tangible Property and Intangible Right-To-Use Assets (Net)			
<b>Total Assets</b>			<b>\$42,358</b>
0910 Deferred Outflows of Resources			
<b>Total Assets And Deferred Outflows Of Resources</b>			<b>\$42,358</b>

LEA : 113361303 Cocalico SD

Printed 10/31/2023 11:36:49 AM

Amounts Expressed in Whole Dollars

Private Purpose Trust  
(71)

Investment Trust  
(72)

Pension Trust  
(73)

Student Activity Custodial  
(81)

**Liabilities, Deferred Inflows Of Resources And Net Position**

**Liabilities**

0400 Due to Other Funds	232
0410 Due to Other Governments, Primary Government and Component Units	
0420 Accounts Payable	
0430 Contracts Payable	
0450 Short-Term Payables	
0460 Payroll Accruals and Withholdings	
0480 Unearned Revenues	
0490 Other Current Liabilities	

**Total Liabilities** \$232

0950 Deferred Inflows of Resources

**Net Position**

0791 Net Investment in Capital Assets	
0009 Restricted Net Position (0792 – 0798)	
0799 Unrestricted Net Position	42,126

**Total Net Position** \$42,126

**Total Liabilities, Deferred Inflows Of Resources And Net Position** \$42,358

LEA : 113361303 Cocalico SD

Printed 10/31/2023 11:36:49 AM

Amounts Expressed in Whole Dollars	<u>Other Custodial</u> <u>(89)</u>	<u>Fiduciary Component Units</u> <u>(98)</u>	<u>Total Fiduciary Funds</u>
<b>Liabilities, Deferred Inflows Of Resources And Net Position</b>			
<b>Liabilities</b>			
0400 Due to Other Funds			232
0410 Due to Other Governments, Primary Government and Component Units			
0420 Accounts Payable			
0430 Contracts Payable			
0450 Short-Term Payables			
0460 Payroll Accruals and Withholdings			
0480 Unearned Revenues			
0490 Other Current Liabilities			
<b>Total Liabilities</b>			<b>\$232</b>
0950 Deferred Inflows of Resources			
<b>Net Position</b>			
0791 Net Investment in Capital Assets			
0009 Restricted Net Position (0792 – 0798)			
0799 Unrestricted Net Position			42,126
<b>Total Net Position</b>			<b>\$42,126</b>
<b>Total Liabilities, Deferred Inflows Of Resources And Net Position</b>			<b>\$42,358</b>

Amounts Expressed in Whole Dollars	<u>Private Purpose Trust</u> (71)	<u>Investment Trust</u> (72)	<u>Pension Trust</u> (73)	<u>Student Activity</u> <u>Custodial</u> (81)	<u>Other Custodial</u> (89)	<u>Fiduciary Component</u> <u>Units</u> (98)
<b>Additions</b>						
0091 Gifts and Contributions	86,238					
0095 Net Investment Earnings	369					
0092 Other Additions						
<b>Deductions</b>						
0093 Scholarships Awarded						
0094 Other Deductions	81,549					
<b>Change In Net Position</b>	<b>\$5,058</b>					
0006 Net Position – Beginning of Fiscal Year	37,068					
0007 Net Position Held in Trust for Pension Benefits						
<b>Net Position - End of Fiscal Year</b>	<b>\$42,126</b>					

Amounts Expressed in Whole Dollars	<u>Total Fiduciary Funds</u>
<b>Additions</b>	
0091 Gifts and Contributions	86,238
0095 Net Investment Earnings	369
0092 Other Additions	
<b>Deductions</b>	
0093 Scholarships Awarded	
0094 Other Deductions	81,549
<b>Change In Net Position</b>	<b>\$5,058</b>
0006 Net Position – Beginning of Fiscal Year	37,068
0007 Net Position Held in Trust for Pension Benefits	
<b>Net Position - End of Fiscal Year</b>	<b>\$42,126</b>



	<u>Revenue Reported In Current Year</u>	<u>Current Year Tax Accrual</u>	<u>Prior Year Tax Accrual</u>	<u>Taxes Collected In Current Year</u>
<b><u>Revenue from Local Sources</u></b>				
6111 Current Real Estate Taxes	36,133,587.46			36,133,587.46
6112 Interim Real Estate Taxes	236,308.58			236,308.58
6113 Public Utility Realty Taxes	38,567.76			38,567.76
6114 Payments in Lieu of Current Taxes - State / Local	478.49			478.49
6151 Current Act 511 Earned Income Taxes	4,397,788.13			4,397,788.13
6153 Current Act 511 Real Estate Transfer Taxes	571,419.55			571,419.55
6411 Delinquent Real Estate Taxes	556,149.06			556,149.06
6500 Earnings on Investments	1,265,309.74			
6700 Revenues from LEA Activities	74,789.55			
6821 State Revenue Received from Other Pennsylvania Public LEAs	89,475.69			
6831 Federal Revenue Received from Other Pennsylvania Public LEAs	149,507.21			
6832 Federal IDEA Revenue Received as Pass Through	739,262.00			
6833 Federal ARP Act IDEA Revenue Received as Pass Through	91,112.23			
6910 Rentals	26,158.75			
6920 Contributions and Donations from Private Sources	7,259.93			
6942 Summer School Tuition	4,287.50			
6944 Receipts from Other LEAs in Pennsylvania - Education	12,463.49			
6991 Refunds of a Prior Year Expenditure	7,072.86			
6992 Energy Efficiency Revenues and Incentives	9,000.00			
6999 Other Revenues Not Specified Above	32,812.22			
<b>TOTAL Revenue from Local Sources</b>	<b>\$44,442,810.20</b>			<b>\$41,934,299.03</b>

**Revenue Reported  
In Current Year**

**Revenue from State Sources**

7111 Basic Education Funding-Formula	8,464,554.74		
7112 Basic Education Funding-Social Security	962,248.94		
7160 Tuition for Orphans Subsidy	96,458.29		
7271 Special Education funds for School-Aged Pupils	2,103,774.43		
7311 Pupil Transportation Subsidy	1,344,672.60		
7312 Nonpublic and Charter School Pupil Transportation Subsidy	112,420.00		
7320 Rental and Sinking Fund Payments / Building Reimbursement Subsidy	7,017.59		
7330 Health Services (Medical, Dental, Nurse, Act 25)	53,200.39		
7340 State Property Tax Reduction Allocation	1,397,169.96		
7505 Ready to Learn Block Grant	400,960.00		
7820 State Share of Retirement Contributions	4,822,785.34		
<b>TOTAL Revenue from State Sources</b>	<b>\$19,765,262.28</b>		

**Revenue Reported  
In Current Year**

**Revenue from Federal Sources**

8514 Title I - Improving the Academic Achievement of the Disadvantaged	492,725.77			
8515 Title II - Preparing, Training, and Recruiting High Quality Teachers and Principals	80,634.27			
8516 Title III - Language Instruction for English Learners and Immigrant Students	11,337.00			
8517 Title IV - 21st Century Schools	40,785.00			
8743 ESSER II - Elementary and Secondary School Emergency Relief Fund	30,943.70			
8744 ARP ESSER - Elementary and Secondary School Emergency Relief Fund	1,014,802.40			
8751 ARP ESSER Learning Loss	70,756.80			
8752 ARP ESSER Summer Programs	25,886.52			
8753 ARP ESSER Afterschool Programs	13,919.36			
8810 School-Based Access Medicaid Reimbursement Program (SBAP) Reimbursements (Access)	71,902.26			
8820 Medical Assistance Reimbursement for Administrative Claiming (Quarterly) Program	3,673.18			
<b>TOTAL Revenue from Federal Sources</b>	<b>\$1,857,366.26</b>			

	<b>Revenue Reported In Current Year</b>	
<b><u>Other Financing Sources</u></b>		
9220 Leases and Other Right-to-Use Arrangements	402,390.61	
9400 Sale of or Compensation for Loss of Fixed Assets	44,495.75	
<b>TOTAL Other Financing Sources</b>	<b>\$446,886.36</b>	
<b>TOTAL FROM ALL SOURCES</b>	<b>\$66,512,325.10</b>	<b>\$41,934,299.03</b>

LEA : 113361303 Cocalico SD

Printed 10/31/2023 11:36:55 AM

	<u>General Fund (10)</u>	<u>Student Sponsored Activity Fund (21)</u>	<u>Public Purpose Trust (27)</u>	<u>Other Compt Approved (28)</u>	<u>Athletic / Activity (29)</u>	<u>Capital Reserve (690, 1850) (31)</u>
<b>6000 Revenue from Local Sources</b>						
6111 Current Real Estate Taxes	36,133,587.46					
6112 Interim Real Estate Taxes	236,308.58					
6113 Public Utility Realty Taxes	38,567.76					
6114 Payments in Lieu of Current Taxes - State / Local	478.49					
6151 Current Act 511 Earned Income Taxes	4,397,788.13					
6153 Current Act 511 Real Estate Transfer Taxes	571,419.55					
6411 Delinquent Real Estate Taxes	556,149.06					
6500 Earnings on Investments	1,265,309.74					
6700 Revenues from LEA Activities	74,789.55	117,220.00				
6821 State Revenue Received from Other Pennsylvania Public LEAs	89,475.69					
6831 Federal Revenue Received from Other Pennsylvania Public LEAs	149,507.21					
6832 Federal IDEA Revenue Received as Pass Through	739,262.00					
6833 Federal ARP Act IDEA Revenue Received as Pass Through	91,112.23					
6910 Rentals	26,158.75					
6920 Contributions and Donations from Private Sources	7,259.93					
6942 Summer School Tuition	4,287.50					
6944 Receipts from Other LEAs in Pennsylvania - Education	12,463.49					
6991 Refunds of a Prior Year Expenditure	7,072.86					
6992 Energy Efficiency Revenues and Incentives	9,000.00					
6999 Other Revenues Not Specified Above	32,812.22					
<b>6000 Total Revenue from Local Sources</b>	<b>\$44,442,810.20</b>	<b>\$117,220.00</b>				
<b>7000 Revenue from State Sources</b>						
7111 Basic Education Funding-Formula	8,464,554.74					
7112 Basic Education Funding-Social Security	962,248.94					
7160 Tuition for Orphans Subsidy	96,458.29					
7271 Special Education funds for School-Aged Pupils	2,103,774.43					
7311 Pupil Transportation Subsidy	1,344,672.60					
7312 Nonpublic and Charter School Pupil Transportation Subsidy	112,420.00					
7320 Rental and Sinking Fund Payments / Building Reimbursement Subsidy	7,017.59					
7330 Health Services (Medical, Dental, Nurse, Act 25)	53,200.39					
7340 State Property Tax Reduction Allocation	1,397,169.96					
7505 Ready to Learn Block Grant	400,960.00					
7820 State Share of Retirement Contributions	4,822,785.34					
<b>7000 Total Revenue from State Sources</b>	<b>\$19,765,262.28</b>					

LEA : 113361303 Cocalico SD

Printed 10/31/2023 11:36:55 AM

	<u>Capital Reserve</u> <u>(1431) (32)</u>	<u>Other Capital</u> <u>Projects Fund (39)</u>	<u>Debt Service (40)</u>	<u>Permanent (90)</u>	<u>Total</u>
<b>6000 Revenue from Local Sources</b>					
6111 Current Real Estate Taxes					36,133,587.46
6112 Interim Real Estate Taxes					236,308.58
6113 Public Utility Realty Taxes					38,567.76
6114 Payments in Lieu of Current Taxes - State / Local					478.49
6151 Current Act 511 Earned Income Taxes					4,397,788.13
6153 Current Act 511 Real Estate Transfer Taxes					571,419.55
6411 Delinquent Real Estate Taxes					556,149.06
6500 Earnings on Investments	278,200.64	79,933.39			1,623,443.77
6700 Revenues from LEA Activities					192,009.55
6821 State Revenue Received from Other Pennsylvania Public LEAs					89,475.69
6831 Federal Revenue Received from Other Pennsylvania Public LEAs					149,507.21
6832 Federal IDEA Revenue Received as Pass Through					739,262.00
6833 Federal ARP Act IDEA Revenue Received as Pass Through					91,112.23
6910 Rentals					26,158.75
6920 Contributions and Donations from Private Sources					7,259.93
6942 Summer School Tuition					4,287.50
6944 Receipts from Other LEAs in Pennsylvania - Education					12,463.49
6991 Refunds of a Prior Year Expenditure					7,072.86
6992 Energy Efficiency Revenues and Incentives					9,000.00
6999 Other Revenues Not Specified Above					32,812.22
<b>6000 Total Revenue from Local Sources</b>	<b>\$278,200.64</b>	<b>\$79,933.39</b>			<b>\$44,918,164.23</b>
<b>7000 Revenue from State Sources</b>					
7111 Basic Education Funding-Formula					8,464,554.74
7112 Basic Education Funding-Social Security					962,248.94
7160 Tuition for Orphans Subsidy					96,458.29
7271 Special Education funds for School-Aged Pupils					2,103,774.43
7311 Pupil Transportation Subsidy					1,344,672.60
7312 Nonpublic and Charter School Pupil Transportation Subsidy					112,420.00
7320 Rental and Sinking Fund Payments / Building Reimbursement Subsidy					7,017.59
7330 Health Services (Medical, Dental, Nurse, Act 25)					53,200.39
7340 State Property Tax Reduction Allocation					1,397,169.96
7505 Ready to Learn Block Grant					400,960.00
7820 State Share of Retirement Contributions					4,822,785.34
<b>7000 Total Revenue from State Sources</b>					<b>\$19,765,262.28</b>

LEA : 113361303 Cocalico SD

Printed 10/31/2023 11:36:55 AM

	<u>General Fund (10)</u>	<u>Student Sponsored Activity Fund (21)</u>	<u>Public Purpose Trust (27)</u>	<u>Other Compt Approved (28)</u>	<u>Athletic / Activity (29)</u>	<u>Capital Reserve (690, 1850) (31)</u>
<b>8000 Revenue from Federal Sources</b>						
8514 Title I - Improving the Academic Achievement of the Disadvantaged	492,725.77					
8515 Title II - Preparing, Training, and Recruiting High Quality Teachers and Principals	80,634.27					
8516 Title III - Language Instruction for English Learners and Immigrant Students	11,337.00					
8517 Title IV - 21st Century Schools	40,785.00					
8743 ESSER II - Elementary and Secondary School Emergency Relief Fund	30,943.70					
8744 ARP ESSER - Elementary and Secondary School Emergency Relief Fund	1,014,802.40					
8751 ARP ESSER Learning Loss	70,756.80					
8752 ARP ESSER Summer Programs	25,886.52					
8753 ARP ESSER Afterschool Programs	13,919.36					
8810 School-Based Access Medicaid Reimbursement Program (SBAP) Reimbursements (Access)	71,902.26					
8820 Medical Assistance Reimbursement for Administrative Claiming (Quarterly) Program	3,673.18					
<b>8000 Total Revenue from Federal Sources</b>	<b>\$1,857,366.26</b>					
<b>9000 Other Financing Sources</b>						
9220 Leases and Other Right-to-Use Arrangements	402,390.61					
9310 General Fund Transfers						
9400 Sale of or Compensation for Loss of Fixed Assets	44,495.75					
<b>9000 Total Other Financing Sources</b>	<b>\$446,886.36</b>					
<b>Total From All Sources</b>	<b>\$66,512,325.10</b>	<b>\$117,220.00</b>				

	<u>Capital Reserve</u> <u>(1431) (32)</u>	<u>Other Capital</u> <u>Projects Fund (39)</u>	<u>Debt Service (40)</u>	<u>Permanent (90)</u>	<u>Total</u>
<b>8000 Revenue from Federal Sources</b>					
8514 Title I - Improving the Academic Achievement of the Disadvantaged					492,725.77
8515 Title II - Preparing, Training, and Recruiting High Quality Teachers and Principals					80,634.27
8516 Title III - Language Instruction for English Learners and Immigrant Students					11,337.00
8517 Title IV - 21st Century Schools					40,785.00
8743 ESSER II - Elementary and Secondary School Emergency Relief Fund					30,943.70
8744 ARP ESSER - Elementary and Secondary School Emergency Relief Fund					1,014,802.40
8751 ARP ESSER Learning Loss					70,756.80
8752 ARP ESSER Summer Programs					25,886.52
8753 ARP ESSER Afterschool Programs					13,919.36
8810 School-Based Access Medicaid Reimbursement Program (SBAP) Reimbursements (Access)					71,902.26
8820 Medical Assistance Reimbursement for Administrative Claiming (Quarterly) Program					3,673.18
<b>8000 Total Revenue from Federal Sources</b>					<b>\$1,857,366.26</b>
<b>9000 Other Financing Sources</b>					
9220 Leases and Other Right-to-Use Arrangements					402,390.61
9310 General Fund Transfers	3,346,341.00		1,655,658.33		5,001,999.33
9400 Sale of or Compensation for Loss of Fixed Assets					44,495.75
<b>9000 Total Other Financing Sources</b>	<b>\$3,346,341.00</b>		<b>\$1,655,658.33</b>		<b>\$5,448,885.69</b>
<b>Total From All Sources</b>	<b>\$3,624,541.64</b>	<b>\$79,933.39</b>	<b>\$1,655,658.33</b>		<b>\$71,989,678.46</b>



	<u>General Fund (10)</u>	<u>Student Sponsored Activity Fund (21)</u>	<u>Public Purpose Trust (27)</u>	<u>Other Compt Approved (28)</u>	<u>Athletic / Activity (29)</u>	<u>Capital Reserve (690. 1850) (31)</u>
Revenue from Local Sources	44,442,810.20	117,220.00				
Revenue from State Sources	19,765,262.28					
Revenue from Federal Sources	1,857,366.26					
Other Financing Sources	446,886.36					
<b>Total From All Sources</b>	<b>\$66,512,325.10</b>	<b>\$117,220.00</b>				

	<u>Capital Reserve (1431)</u> <u>(32)</u>	<u>Other Capital Projects</u> <u>Fund (39)</u>	<u>Debt Service (40)</u>	<u>Permanent (90)</u>	<u>Total</u>
Revenue from Local Sources	278,200.64	79,933.39			44,918,164.23
Revenue from State Sources					19,765,262.28
Revenue from Federal Sources					1,857,366.26
Other Financing Sources	3,346,341.00		1,655,658.33		5,448,885.69
<b>Total From All Sources</b>	<b>\$3,624,541.64</b>	<b>\$79,933.39</b>	<b>\$1,655,658.33</b>		<b>\$71,989,678.46</b>

**General Fund (10)**

	<u>Total</u>
<b>1000 Instruction</b>	
<b>100 Personnel Services – Salaries</b>	
100 Personnel Services – Salaries	18,574,024.40
<b>Total Personnel Services – Salaries</b>	<b>\$18,574,024.40</b>
<b>200 Personnel Services – Employee Benefits</b>	
210 Group Insurance – Contracted Provider	26,090.40
220 Social Security Contributions	1,371,173.88
230 PSERS Retirement Contributions	6,606,769.62
260 Workers’ Compensation	178,514.91
270 Group Insurance – Self-Insurance	4,180,629.01
291 Other Retirement Plans	25,685.00
<b>Total Personnel Services – Employee Benefits</b>	<b>\$12,388,862.82</b>
<b>300 Purchased Professional and Technical Services</b>	
322 Professional Educational Services – Ius	3,953,912.33
323 Professional Educational Services – Other Educational Agencies	61,327.00
329 Professional Educational Services – Other	660,520.90
330 Other Professional Services	3,289.59
<b>Total Purchased Professional and Technical Services</b>	<b>\$4,679,049.82</b>
<b>400 Purchased Property Services</b>	
430 Repairs and Maintenance Services	18,833.88
440 Rentals	61,826.90
<b>Total Purchased Property Services</b>	<b>\$80,660.78</b>
<b>500 Other Purchased Services</b>	
510 Student Transportation Services	89,592.05
561 Tuition To Other School Districts Within the State	631,768.38
562 Tuition To Pennsylvania Charter Schools	1,656,153.24
563 Tuition To Nonpublic Schools	657,135.00
564 Tuition To Career and Technology Centers	1,081,749.57
566 Tuition To Institutions of Higher Education and Technical Institutes	1,197.00
567 Tuition To Approved Private Schools (APS) and PA Chartered Schools for the Deaf and Blind	116,961.00
568 Tuition To Private Residential Rehabilitative Institutions (PRRI) [In-State] and Detention Centers	233,066.88
569 Tuition – Other	58,882.13
580 Travel	2,558.48
<b>Total Other Purchased Services</b>	<b>\$4,529,063.73</b>
<b>600 Supplies</b>	
610 General Supplies	490,744.06
640 Books and Periodicals	15,316.47
650 Supplies & Fees – Technology Related	350,811.51
<b>Total Supplies</b>	<b>\$856,872.04</b>
<b>700 Property</b>	
736 Technology Equipment Lease	377,588.00
739 Leases - Other	23,488.16
752 Capital Equipment – Original and Additional	6,346.36
762 Capitalized Equipment - Replacement	7,225.00

**General Fund (10)**

<b>1000 Instruction</b>		<u><b>Total</b></u>
<b>Total Property</b>		<b>\$414,647.52</b>
<b>800 <u>Other Objects</u></b>		
810 Dues and Fees		5,224.00
890 Miscellaneous Expenditures		20,400.00
<b>Total Other Objects</b>		<b>\$25,624.00</b>
<b>Total 1000 Instruction</b>		<b>\$41,548,805.11</b>

**General Fund (10)**

**1100 Regular Programs – Elementary / Secondary**

	<u>Elementary</u>	<u>Secondary</u>	<u>Federal</u>	<u>Total</u>
<b>100 Personnel Services – Salaries</b>				
100 Personnel Services – Salaries	5,879,675.62	8,563,991.02	615,357.99	15,059,024.63
<b>Total Personnel Services – Salaries</b>	<b>\$5,879,675.62</b>	<b>\$8,563,991.02</b>	<b>\$615,357.99</b>	<b>\$15,059,024.63</b>
<b>200 Personnel Services – Employee Benefits</b>				
210 Group Insurance – Contracted Provider	8,422.32	12,533.90	990.88	21,947.10
220 Social Security Contributions	433,953.19	630,695.65	44,936.69	1,109,585.53
230 PSERS Retirement Contributions	2,156,445.59	3,104,034.89	107,486.31	5,367,966.79
260 Workers' Compensation	56,564.13	82,308.53	5,859.60	144,732.26
270 Group Insurance – Self-Insurance	1,333,978.76	2,001,953.43	160,124.40	3,496,056.59
291 Other Retirement Plans		25,685.00		25,685.00
<b>Total Personnel Services – Employee Benefits</b>	<b>\$3,989,363.99</b>	<b>\$5,857,211.40</b>	<b>\$319,397.88</b>	<b>\$10,165,973.27</b>
<b>300 Purchased Professional and Technical Services</b>				
322 Professional Educational Services – Ius	476.31	6,540.77		7,017.08
329 Professional Educational Services – Other	292,304.54	258,390.14		550,694.68
330 Other Professional Services	9.23	1,837.43	1,442.93	3,289.59
<b>Total Purchased Professional and Technical Services</b>	<b>\$292,790.08</b>	<b>\$266,768.34</b>	<b>\$1,442.93</b>	<b>\$561,001.35</b>
<b>400 Purchased Property Services</b>				
430 Repairs and Maintenance Services	684.00	18,149.88		18,833.88
<b>Total Purchased Property Services</b>	<b>\$684.00</b>	<b>\$18,149.88</b>		<b>\$18,833.88</b>
<b>500 Other Purchased Services</b>				
510 Student Transportation Services	15,829.82	10,884.84		26,714.66
561 Tuition To Other School Districts Within the State		27,341.26		27,341.26
562 Tuition To Pennsylvania Charter Schools	345,634.01	552,395.00		898,029.01
568 Tuition To Private Residential Rehabilitative Institutions (PRRI) [In-State] and Detention Centers	5,189.28	6,248.82		11,438.10
569 Tuition – Other	613.71	33,503.94		34,117.65
580 Travel	868.16	344.31		1,212.47
<b>Total Other Purchased Services</b>	<b>\$368,134.98</b>	<b>\$630,718.17</b>		<b>\$998,853.15</b>
<b>600 Supplies</b>				
610 General Supplies	139,080.24	288,660.37	38,698.05	466,438.66
640 Books and Periodicals	3,245.18	9,594.21	172.12	13,011.51
650 Supplies & Fees – Technology Related	189,072.25	123,782.53	18,243.81	331,098.59
<b>Total Supplies</b>	<b>\$331,397.67</b>	<b>\$422,037.11</b>	<b>\$57,113.98</b>	<b>\$810,548.76</b>
<b>700 Property</b>				
736 Technology Equipment Lease	188,794.00	188,794.00		377,588.00
739 Leases - Other	12,029.70	11,458.46		23,488.16
752 Capital Equipment – Original and Additional		1,896.36	4,450.00	6,346.36
762 Capitalized Equipment - Replacement	5,375.00	1,850.00		7,225.00
<b>Total Property</b>	<b>\$206,198.70</b>	<b>\$203,998.82</b>	<b>\$4,450.00</b>	<b>\$414,647.52</b>
<b>800 Other Objects</b>				
810 Dues and Fees	650.00	1,584.00		2,234.00
<b>Total Other Objects</b>	<b>\$650.00</b>	<b>\$1,584.00</b>		<b>\$2,234.00</b>
<b>Total 1100 Regular Programs – Elementary / Secondary</b>	<b>\$11,068,895.04</b>	<b>\$15,964,458.74</b>	<b>\$997,762.78</b>	<b>\$28,031,116.56</b>

**General Fund (10)**

**1110 Regular Programs**

	<u>Elementary</u>	<u>Secondary</u>	<u>Federal</u>	<u>Total</u>
<b>100 Personnel Services – Salaries</b>				
100 Personnel Services – Salaries	5,879,675.62	8,563,991.02	342,861.01	14,786,527.65
<b>Total Personnel Services – Salaries</b>	<b>\$5,879,675.62</b>	<b>\$8,563,991.02</b>	<b>\$342,861.01</b>	<b>\$14,786,527.65</b>
<b>200 Personnel Services – Employee Benefits</b>				
210 Group Insurance – Contracted Provider	8,422.32	12,533.90	576.40	21,532.62
220 Social Security Contributions	433,953.19	630,695.65	24,814.40	1,089,463.24
230 PSERS Retirement Contributions	2,156,445.59	3,104,034.89	59,445.09	5,319,925.57
260 Workers' Compensation	56,564.13	82,308.53	3,240.64	142,113.30
270 Group Insurance – Self-Insurance	1,333,978.76	2,001,953.43	102,364.22	3,438,296.41
291 Other Retirement Plans		25,685.00		25,685.00
<b>Total Personnel Services – Employee Benefits</b>	<b>\$3,989,363.99</b>	<b>\$5,857,211.40</b>	<b>\$190,440.75</b>	<b>\$10,037,016.14</b>
<b>300 Purchased Professional and Technical Services</b>				
322 Professional Educational Services – Ius	476.31	6,540.77		7,017.08
329 Professional Educational Services – Other	292,304.54	258,390.14		550,694.68
330 Other Professional Services	9.23	1,837.43	1,442.93	3,289.59
<b>Total Purchased Professional and Technical Services</b>	<b>\$292,790.08</b>	<b>\$266,768.34</b>	<b>\$1,442.93</b>	<b>\$561,001.35</b>
<b>400 Purchased Property Services</b>				
430 Repairs and Maintenance Services	684.00	18,149.88		18,833.88
<b>Total Purchased Property Services</b>	<b>\$684.00</b>	<b>\$18,149.88</b>		<b>\$18,833.88</b>
<b>500 Other Purchased Services</b>				
510 Student Transportation Services	15,829.82	10,884.84		26,714.66
561 Tuition To Other School Districts Within the State		27,341.26		27,341.26
562 Tuition To Pennsylvania Charter Schools	345,634.01	552,395.00		898,029.01
568 Tuition To Private Residential Rehabilitative Institutions (PRRI) [In-State] and Detention Centers	5,189.28	6,248.82		11,438.10
569 Tuition – Other	613.71	33,503.94		34,117.65
580 Travel	868.16	344.31		1,212.47
<b>Total Other Purchased Services</b>	<b>\$368,134.98</b>	<b>\$630,718.17</b>		<b>\$998,853.15</b>
<b>600 Supplies</b>				
610 General Supplies	139,080.24	288,660.37	27,557.25	455,297.86
640 Books and Periodicals	3,245.18	9,594.21	95.94	12,935.33
650 Supplies & Fees – Technology Related	189,072.25	123,782.53	7,060.74	319,915.52
<b>Total Supplies</b>	<b>\$331,397.67</b>	<b>\$422,037.11</b>	<b>\$34,713.93</b>	<b>\$788,148.71</b>
<b>700 Property</b>				
736 Technology Equipment Lease	188,794.00	188,794.00		377,588.00
739 Leases - Other	12,029.70	11,458.46		23,488.16
752 Capital Equipment – Original and Additional		1,896.36	4,450.00	6,346.36
762 Capitalized Equipment - Replacement	5,375.00	1,850.00		7,225.00
<b>Total Property</b>	<b>\$206,198.70</b>	<b>\$203,998.82</b>	<b>\$4,450.00</b>	<b>\$414,647.52</b>
<b>800 Other Objects</b>				
810 Dues and Fees	650.00	1,584.00		2,234.00
<b>Total Other Objects</b>	<b>\$650.00</b>	<b>\$1,584.00</b>		<b>\$2,234.00</b>
<b>Total 1110 Regular Programs</b>	<b>\$11,068,895.04</b>	<b>\$15,964,458.74</b>	<b>\$573,908.62</b>	<b>\$27,607,262.40</b>

**General Fund (10)**

**1190 Federally-Funded Regular Programs**

**100 Personnel Services – Salaries**

	<u>Elementary</u>	<u>Secondary</u>	<u>Federal</u>	<u>Total</u>
100 Personnel Services – Salaries			272,496.98	272,496.98
<b>Total Personnel Services – Salaries</b>			<b>\$272,496.98</b>	<b>\$272,496.98</b>

**200 Personnel Services – Employee Benefits**

210 Group Insurance – Contracted Provider			414.48	414.48
220 Social Security Contributions			20,122.29	20,122.29
230 PSERS Retirement Contributions			48,041.22	48,041.22
260 Workers' Compensation			2,618.96	2,618.96
270 Group Insurance – Self-Insurance			57,760.18	57,760.18
<b>Total Personnel Services – Employee Benefits</b>			<b>\$128,957.13</b>	<b>\$128,957.13</b>

**600 Supplies**

610 General Supplies			11,140.80	11,140.80
640 Books and Periodicals			76.18	76.18
650 Supplies & Fees – Technology Related			11,183.07	11,183.07

<b>Total Supplies</b>			<b>\$22,400.05</b>	<b>\$22,400.05</b>
<b>Total 1190 Federally-Funded Regular Programs</b>			<b>\$423,854.16</b>	<b>\$423,854.16</b>

**General Fund (10)**

**1200 Special Programs – Elementary / Secondary**

	<u>Elementary</u>	<u>Secondary</u>	<u>Federal</u>	<u>Total</u>
<b>100 Personnel Services – Salaries</b>				
100 Personnel Services – Salaries	1,250,462.50	2,055,494.18	85,219.88	3,391,176.56
<b>Total Personnel Services – Salaries</b>	<b>\$1,250,462.50</b>	<b>\$2,055,494.18</b>	<b>\$85,219.88</b>	<b>\$3,391,176.56</b>
<b>200 Personnel Services – Employee Benefits</b>				
210 Group Insurance – Contracted Provider	1,425.06	2,613.24	105.00	4,143.30
220 Social Security Contributions	92,773.53	153,286.68	6,270.43	252,330.64
230 PSERS Retirement Contributions	440,917.26	739,646.84	14,812.74	1,195,376.84
260 Workers' Compensation	12,035.50	19,873.87	683.23	32,592.60
270 Group Insurance – Self-Insurance	240,854.60	426,038.14	17,679.68	684,572.42
<b>Total Personnel Services – Employee Benefits</b>	<b>\$788,005.95</b>	<b>\$1,341,458.77</b>	<b>\$39,551.08</b>	<b>\$2,169,015.80</b>
<b>300 Purchased Professional and Technical Services</b>				
322 Professional Educational Services – lus	1,666,027.48	1,509,260.95	753,355.81	3,928,644.24
323 Professional Educational Services – Other Educational Agencies	30,650.00	9,507.00		40,157.00
329 Professional Educational Services – Other	55,398.34	53,450.48		108,848.82
<b>Total Purchased Professional and Technical Services</b>	<b>\$1,752,075.82</b>	<b>\$1,572,218.43</b>	<b>\$753,355.81</b>	<b>\$4,077,650.06</b>
<b>500 Other Purchased Services</b>				
510 Student Transportation Services	248.70	695.71	29,532.59	30,477.00
561 Tuition To Other School Districts Within the State	3,022.14	601,404.98		604,427.12
562 Tuition To Pennsylvania Charter Schools	263,898.55	494,225.68		758,124.23
563 Tuition To Nonpublic Schools	287,840.80	348,774.20	20,520.00	657,135.00
567 Tuition To Approved Private Schools (APS) and PA Chartered Schools for the Deaf and Blind	111,886.50	5,074.50		116,961.00
568 Tuition To Private Residential Rehabilitative Institutions (PRRI) [In-State] and Detention Centers		98,297.04	3,202.40	101,499.44
569 Tuition – Other		24,764.48		24,764.48
580 Travel	142.42	15.59	1,188.00	1,346.01
<b>Total Other Purchased Services</b>	<b>\$667,039.11</b>	<b>\$1,573,252.18</b>	<b>\$54,442.99</b>	<b>\$2,294,734.28</b>
<b>600 Supplies</b>				
610 General Supplies	8,898.55	13,719.83	525.19	23,143.57
640 Books and Periodicals	1,382.05	826.30		2,208.35
650 Supplies & Fees – Technology Related	6,661.59	13,051.33		19,712.92
<b>Total Supplies</b>	<b>\$16,942.19</b>	<b>\$27,597.46</b>	<b>\$525.19</b>	<b>\$45,064.84</b>
<b>800 Other Objects</b>				
810 Dues and Fees	14.95	2,975.05		2,990.00
890 Miscellaneous Expenditures	490.00	980.00		1,470.00
<b>Total Other Objects</b>	<b>\$504.95</b>	<b>\$3,955.05</b>		<b>\$4,460.00</b>
<b>Total 1200 Special Programs – Elementary / Secondary</b>	<b>\$4,475,030.52</b>	<b>\$6,573,976.07</b>	<b>\$933,094.95</b>	<b>\$11,982,101.54</b>



**General Fund (10)**

**1240 Academic Support**

	<u>Elementary</u>	<u>Secondary</u>	<u>Federal</u>	<u>Total</u>
<b>100 Personnel Services – Salaries</b>				
100 Personnel Services – Salaries	1,250,462.50	2,055,494.18	85,219.88	3,391,176.56
<b>Total Personnel Services – Salaries</b>	<b>\$1,250,462.50</b>	<b>\$2,055,494.18</b>	<b>\$85,219.88</b>	<b>\$3,391,176.56</b>
<b>200 Personnel Services – Employee Benefits</b>				
210 Group Insurance – Contracted Provider	1,425.06	2,613.24	105.00	4,143.30
220 Social Security Contributions	92,773.53	153,286.68	6,270.43	252,330.64
230 PSERS Retirement Contributions	440,917.26	739,646.84	14,812.74	1,195,376.84
260 Workers' Compensation	12,035.50	19,873.87	683.23	32,592.60
270 Group Insurance – Self-Insurance	240,854.60	426,038.14	17,679.68	684,572.42
<b>Total Personnel Services – Employee Benefits</b>	<b>\$788,005.95</b>	<b>\$1,341,458.77</b>	<b>\$39,551.08</b>	<b>\$2,169,015.80</b>
<b>300 Purchased Professional and Technical Services</b>				
322 Professional Educational Services – lus	1,666,027.48	1,509,260.95	753,355.81	3,928,644.24
323 Professional Educational Services – Other Educational Agencies	30,650.00	9,507.00		40,157.00
329 Professional Educational Services – Other	55,398.34	53,450.48		108,848.82
<b>Total Purchased Professional and Technical Services</b>	<b>\$1,752,075.82</b>	<b>\$1,572,218.43</b>	<b>\$753,355.81</b>	<b>\$4,077,650.06</b>
<b>500 Other Purchased Services</b>				
510 Student Transportation Services	248.70	695.71	29,532.59	30,477.00
561 Tuition To Other School Districts Within the State	3,022.14	601,404.98		604,427.12
562 Tuition To Pennsylvania Charter Schools	263,898.55	494,225.68		758,124.23
580 Travel	142.42	15.59	1,188.00	1,346.01
<b>Total Other Purchased Services</b>	<b>\$267,311.81</b>	<b>\$1,096,341.96</b>	<b>\$30,720.59</b>	<b>\$1,394,374.36</b>
<b>600 Supplies</b>				
610 General Supplies	8,898.55	13,719.83	525.19	23,143.57
640 Books and Periodicals	1,382.05	826.30		2,208.35
650 Supplies & Fees – Technology Related	6,661.59	13,051.33		19,712.92
<b>Total Supplies</b>	<b>\$16,942.19</b>	<b>\$27,597.46</b>	<b>\$525.19</b>	<b>\$45,064.84</b>
<b>800 Other Objects</b>				
810 Dues and Fees	14.95	2,975.05		2,990.00
890 Miscellaneous Expenditures	490.00	980.00		1,470.00
<b>Total Other Objects</b>	<b>\$504.95</b>	<b>\$3,955.05</b>		<b>\$4,460.00</b>
<b>Total 1240 Academic Support</b>	<b>\$4,075,303.22</b>	<b>\$6,097,065.85</b>	<b>\$909,372.55</b>	<b>\$11,081,741.62</b>

**General Fund (10)**

	<u>Elementary</u>	<u>Secondary</u>	<u>Federal</u>	<u>Total</u>
<b>1241 Learning Support – Public</b>				
<b>100 Personnel Services – Salaries</b>				
100 Personnel Services – Salaries	1,206,746.37	2,055,494.18	85,219.88	3,347,460.43
<b>Total Personnel Services – Salaries</b>	<b>\$1,206,746.37</b>	<b>\$2,055,494.18</b>	<b>\$85,219.88</b>	<b>\$3,347,460.43</b>
<b>200 Personnel Services – Employee Benefits</b>				
210 Group Insurance – Contracted Provider	1,362.06	2,613.24	105.00	4,080.30
220 Social Security Contributions	89,432.82	153,286.68	6,270.43	248,989.93
230 PSERS Retirement Contributions	425,502.92	739,646.84	14,812.74	1,179,962.50
260 Workers' Compensation	11,615.34	19,873.87	683.23	32,172.44
270 Group Insurance – Self-Insurance	231,189.47	426,038.14	17,679.68	674,907.29
<b>Total Personnel Services – Employee Benefits</b>	<b>\$759,102.61</b>	<b>\$1,341,458.77</b>	<b>\$39,551.08</b>	<b>\$2,140,112.46</b>
<b>300 Purchased Professional and Technical Services</b>				
322 Professional Educational Services – lus	1,666,027.48	1,509,260.95	753,355.81	3,928,644.24
323 Professional Educational Services – Other Educational Agencies	30,650.00	9,507.00		40,157.00
329 Professional Educational Services – Other	55,398.34	53,450.48		108,848.82
<b>Total Purchased Professional and Technical Services</b>	<b>\$1,752,075.82</b>	<b>\$1,572,218.43</b>	<b>\$753,355.81</b>	<b>\$4,077,650.06</b>
<b>500 Other Purchased Services</b>				
510 Student Transportation Services	248.70	540.13	29,532.59	30,321.42
561 Tuition To Other School Districts Within the State	3,022.14	601,404.98		604,427.12
562 Tuition To Pennsylvania Charter Schools	263,898.55	494,225.68		758,124.23
580 Travel		15.59	1,188.00	1,203.59
<b>Total Other Purchased Services</b>	<b>\$267,169.39</b>	<b>\$1,096,186.38</b>	<b>\$30,720.59</b>	<b>\$1,394,076.36</b>
<b>600 Supplies</b>				
610 General Supplies	8,822.04	13,719.83	525.19	23,067.06
640 Books and Periodicals	1,243.03	826.30		2,069.33
650 Supplies & Fees – Technology Related	6,201.68	13,051.33		19,253.01
<b>Total Supplies</b>	<b>\$16,266.75</b>	<b>\$27,597.46</b>	<b>\$525.19</b>	<b>\$44,389.40</b>
<b>Total 1241 Learning Support – Public</b>	<b>\$4,001,360.94</b>	<b>\$6,092,955.22</b>	<b>\$909,372.55</b>	<b>\$11,003,688.71</b>

**General Fund (10)**

**1243 Gifted Support**

	<u>Elementary</u>	<u>Secondary</u>	<u>Federal</u>	<u>Total</u>
<b>100 Personnel Services – Salaries</b>				
100 Personnel Services – Salaries	43,716.13			43,716.13
<b>Total Personnel Services – Salaries</b>	<b>\$43,716.13</b>			<b>\$43,716.13</b>
<b>200 Personnel Services – Employee Benefits</b>				
210 Group Insurance – Contracted Provider	63.00			63.00
220 Social Security Contributions	3,340.71			3,340.71
230 PSERS Retirement Contributions	15,414.34			15,414.34
260 Workers' Compensation	420.16			420.16
270 Group Insurance – Self-Insurance	9,665.13			9,665.13
<b>Total Personnel Services – Employee Benefits</b>	<b>\$28,903.34</b>			<b>\$28,903.34</b>
<b>500 Other Purchased Services</b>				
510 Student Transportation Services		155.58		155.58
580 Travel	142.42			142.42
<b>Total Other Purchased Services</b>	<b>\$142.42</b>	<b>\$155.58</b>		<b>\$298.00</b>
<b>600 Supplies</b>				
610 General Supplies	76.51			76.51
640 Books and Periodicals	139.02			139.02
650 Supplies & Fees – Technology Related	459.91			459.91
<b>Total Supplies</b>	<b>\$675.44</b>			<b>\$675.44</b>
<b>800 Other Objects</b>				
810 Dues and Fees	14.95	2,975.05		2,990.00
890 Miscellaneous Expenditures	490.00	980.00		1,470.00
<b>Total Other Objects</b>	<b>\$504.95</b>	<b>\$3,955.05</b>		<b>\$4,460.00</b>
<b>Total 1243 Gifted Support</b>	<b>\$73,942.28</b>	<b>\$4,110.63</b>		<b>\$78,052.91</b>

General Fund (10)

1290 Special Programs - Other Support

500 Other Purchased Services

	<u>Elementary</u>	<u>Secondary</u>	<u>Federal</u>	<u>Total</u>
563 Tuition To Nonpublic Schools	287,840.80	348,774.20	20,520.00	657,135.00
567 Tuition To Approved Private Schools (APS) and PA Chartered Schools for the Deaf and Blind	111,886.50	5,074.50		116,961.00
568 Tuition To Private Residential Rehabilitative Institutions (PRRI) [In-State] and Detention Centers		98,297.04	3,202.40	101,499.44
569 Tuition – Other		24,764.48		24,764.48
<b>Total Other Purchased Services</b>	<b>\$399,727.30</b>	<b>\$476,910.22</b>	<b>\$23,722.40</b>	<b>\$900,359.92</b>
<b>Total 1290 Special Programs - Other Support</b>	<b>\$399,727.30</b>	<b>\$476,910.22</b>	<b>\$23,722.40</b>	<b>\$900,359.92</b>

LEA : 113361303 Cocalico SD

Printed 10/31/2023 11:37:00 AM

General Fund (10)

1300 Vocational Education

400 Purchased Property Services

440 Rentals

**Total Purchased Property Services**

500 Other Purchased Services

564 Tuition To Career and Technology Centers

**Total Other Purchased Services**

**Total 1300 Vocational Education**

Elementary

Secondary

Federal

Total

61,826.90

61,826.90

**\$61,826.90**

**\$61,826.90**

1,081,749.57

1,081,749.57

**\$1,081,749.57**

**\$1,081,749.57**

**\$1,143,576.47**

**\$1,143,576.47**

**General Fund (10)**

	<u>Elementary</u>	<u>Secondary</u>	<u>Federal</u>	<u>Total</u>
<b>1400 Other Instructional Programs – Elementary / Secondary</b>				
<b>100 Personnel Services – Salaries</b>				
100 Personnel Services – Salaries	50.00	330.00	123,443.21	123,823.21
<b>Total Personnel Services – Salaries</b>	<b>\$50.00</b>	<b>\$330.00</b>	<b>\$123,443.21</b>	<b>\$123,823.21</b>
<b>200 Personnel Services – Employee Benefits</b>				
220 Social Security Contributions	3.62	24.95	9,229.14	9,257.71
230 PSERS Retirement Contributions	16,287.11	5,492.92	21,645.96	43,425.99
260 Workers' Compensation	0.48	3.17	1,186.40	1,190.05
<b>Total Personnel Services – Employee Benefits</b>	<b>\$16,291.21</b>	<b>\$5,521.04</b>	<b>\$32,061.50</b>	<b>\$53,873.75</b>
<b>300 Purchased Professional and Technical Services</b>				
323 Professional Educational Services – Other Educational Agencies	3,970.00	17,200.00		21,170.00
329 Professional Educational Services – Other			977.40	977.40
<b>Total Purchased Professional and Technical Services</b>	<b>\$3,970.00</b>	<b>\$17,200.00</b>	<b>\$977.40</b>	<b>\$22,147.40</b>
<b>500 Other Purchased Services</b>				
510 Student Transportation Services			32,400.39	32,400.39
568 Tuition To Private Residential Rehabilitative Institutions (PRRI) [In-State] and Detention Centers		120,129.34		120,129.34
<b>Total Other Purchased Services</b>		<b>\$120,129.34</b>	<b>\$32,400.39</b>	<b>\$152,529.73</b>
<b>600 Supplies</b>				
610 General Supplies	315.71		236.52	552.23
640 Books and Periodicals			96.61	96.61
<b>Total Supplies</b>	<b>\$315.71</b>		<b>\$333.13</b>	<b>\$648.84</b>
<b>800 Other Objects</b>				
890 Miscellaneous Expenditures			18,930.00	18,930.00
<b>Total Other Objects</b>			<b>\$18,930.00</b>	<b>\$18,930.00</b>
<b>Total 1400 Other Instructional Programs – Elementary / Secondary</b>	<b>\$20,626.92</b>	<b>\$143,180.38</b>	<b>\$208,145.63</b>	<b>\$371,952.93</b>

**General Fund (10)**

**1420 Summer School**

	<u>Elementary</u>	<u>Secondary</u>	<u>Federal</u>	<u>Total</u>
<b>100 Personnel Services – Salaries</b>				
100 Personnel Services – Salaries			56,763.21	56,763.21
<b>Total Personnel Services – Salaries</b>			<b>\$56,763.21</b>	<b>\$56,763.21</b>
<b>200 Personnel Services – Employee Benefits</b>				
220 Social Security Contributions			4,303.28	4,303.28
230 PSERS Retirement Contributions	9,162.87	727.57	9,890.41	19,780.85
260 Workers’ Compensation			545.54	545.54
<b>Total Personnel Services – Employee Benefits</b>	<b>\$9,162.87</b>	<b>\$727.57</b>	<b>\$14,739.23</b>	<b>\$24,629.67</b>
<b>300 Purchased Professional and Technical Services</b>				
329 Professional Educational Services – Other			977.40	977.40
<b>Total Purchased Professional and Technical Services</b>			<b>\$977.40</b>	<b>\$977.40</b>
<b>500 Other Purchased Services</b>				
510 Student Transportation Services			15,744.00	15,744.00
<b>Total Other Purchased Services</b>			<b>\$15,744.00</b>	<b>\$15,744.00</b>
<b>600 Supplies</b>				
610 General Supplies	315.71		236.52	552.23
640 Books and Periodicals			96.61	96.61
<b>Total Supplies</b>	<b>\$315.71</b>		<b>\$333.13</b>	<b>\$648.84</b>
<b>Total 1420 Summer School</b>	<b>\$9,478.58</b>	<b>\$727.57</b>	<b>\$88,556.97</b>	<b>\$98,763.12</b>

**General Fund (10)**

**1430 Homebound Instruction**

**100 Personnel Services – Salaries**

	<u>Elementary</u>	<u>Secondary</u>	<u>Federal</u>	<u>Total</u>
100 Personnel Services – Salaries	50.00	330.00		380.00
<b>Total Personnel Services – Salaries</b>	<b>\$50.00</b>	<b>\$330.00</b>		<b>\$380.00</b>

**200 Personnel Services – Employee Benefits**

220 Social Security Contributions	3.62	24.95		28.57
230 PSERS Retirement Contributions	17.63	116.36		133.99
260 Workers’ Compensation	0.48	3.17		3.65
<b>Total Personnel Services – Employee Benefits</b>	<b>\$21.73</b>	<b>\$144.48</b>		<b>\$166.21</b>

**300 Purchased Professional and Technical Services**

323 Professional Educational Services – Other Educational Agencies	3,970.00	17,200.00		21,170.00
<b>Total Purchased Professional and Technical Services</b>	<b>\$3,970.00</b>	<b>\$17,200.00</b>		<b>\$21,170.00</b>

**Total 1430 Homebound Instruction**

	<b>\$4,041.73</b>	<b>\$17,674.48</b>		<b>\$21,716.21</b>
--	-------------------	--------------------	--	--------------------



LEA : 113361303 Cocalico SD

Printed 10/31/2023 11:37:00 AM

General Fund (10)

1440 Alternative Regular Education Programs

Elementary

Secondary

Federal

Total

500 Other Purchased Services

568 Tuition To Private Residential Rehabilitative Institutions (PRRI) [In-State] and Detention Centers

120,129.34

120,129.34

**Total Other Purchased Services**

**\$120,129.34**

**\$120,129.34**

**Total 1440 Alternative Regular Education Programs**

**\$120,129.34**

**\$120,129.34**

LEA : 113361303 Cocalico SD

Printed 10/31/2023 11:37:00 AM

General Fund (10)

1441 Adjudicated / Court-Placed Programs

Elementary

Secondary

Federal

Total

500 Other Purchased Services

568 Tuition To Private Residential Rehabilitative Institutions (PRRI) [In-State] and Detention Centers

5,232.63

5,232.63

**Total Other Purchased Services**

**\$5,232.63**

**\$5,232.63**

**Total 1441 Adjudicated / Court-Placed Programs**

**\$5,232.63**

**\$5,232.63**

LEA : 113361303 Cocalico SD

Printed 10/31/2023 11:37:00 AM

General Fund (10)

1442 Alternative Education Programs

Elementary

Secondary

Federal

Total

500 Other Purchased Services

568 Tuition To Private Residential Rehabilitative Institutions (PRRI) [In-State] and Detention Centers

114,896.71

114,896.71

**Total Other Purchased Services**

**\$114,896.71**

**\$114,896.71**

**Total 1442 Alternative Education Programs**

**\$114,896.71**

**\$114,896.71**

**General Fund (10)**

	<u>Elementary</u>	<u>Secondary</u>	<u>Federal</u>	<u>Total</u>
<b>1450 Instructional Programs Outside the Established School Day</b>				
<b>100 Personnel Services – Salaries</b>				
100 Personnel Services – Salaries			66,680.00	66,680.00
<b>Total Personnel Services – Salaries</b>			<b>\$66,680.00</b>	<b>\$66,680.00</b>
<b>200 Personnel Services – Employee Benefits</b>				
220 Social Security Contributions			4,925.86	4,925.86
230 PSERS Retirement Contributions	7,106.61	4,648.99	11,755.55	23,511.15
260 Workers' Compensation			640.86	640.86
<b>Total Personnel Services – Employee Benefits</b>	<b>\$7,106.61</b>	<b>\$4,648.99</b>	<b>\$17,322.27</b>	<b>\$29,077.87</b>
<b>500 Other Purchased Services</b>				
510 Student Transportation Services			16,656.39	16,656.39
<b>Total Other Purchased Services</b>			<b>\$16,656.39</b>	<b>\$16,656.39</b>
<b>800 Other Objects</b>				
890 Miscellaneous Expenditures			18,930.00	18,930.00
<b>Total Other Objects</b>			<b>\$18,930.00</b>	<b>\$18,930.00</b>
<b>Total 1450 Instructional Programs Outside the Established School Day</b>	<b>\$7,106.61</b>	<b>\$4,648.99</b>	<b>\$119,588.66</b>	<b>\$131,344.26</b>

General Fund (10)

1500 Nonpublic School Programs

Elementary

Secondary

Federal

Total

300 Purchased Professional and Technical Services

322 Professional Educational Services – lus

18,251.01

18,251.01

**Total Purchased Professional and Technical Services**

**\$18,251.01**

**\$18,251.01**

600 Supplies

610 General Supplies

609.60

609.60

**Total Supplies**

**\$609.60**

**\$609.60**

**Total 1500 Nonpublic School Programs**

**\$18,860.61**

**\$18,860.61**

**General Fund (10)**

**1700 Higher Education Programs for Secondary Students**

Elementary

Secondary

Federal

Total

**500 Other Purchased Services**

566 Tuition To Institutions of Higher Education and Technical Institutes

1,197.00

**Total Other Purchased Services**

**\$1,197.00**

**Total 1700 Higher Education Programs for Secondary Students**

**\$1,197.00**

General Fund (10)

2000 Support Services

Total

100 Personnel Services – Salaries

100 Personnel Services – Salaries 7,881,948.61

**Total Personnel Services – Salaries**

**\$7,881,948.61**

200 Personnel Services – Employee Benefits

210 Group Insurance – Contracted Provider 13,582.80

220 Social Security Contributions 577,942.56

230 PSERS Retirement Contributions 2,751,024.01

240 Tuition Reimbursement 223,911.84

260 Workers' Compensation 75,753.94

270 Group Insurance – Self-Insurance 2,210,659.71

291 Other Retirement Plans 335,447.50

299 All Other Employee Benefits 85,835.38

**Total Personnel Services – Employee Benefits**

**\$6,274,157.74**

300 Purchased Professional and Technical Services

310 Official / Administrative Services 71,578.08

322 Professional Educational Services – Ius 25,380.81

323 Professional Educational Services – Other Educational Agencies 20,397.00

329 Professional Educational Services – Other 83,054.31

330 Other Professional Services 140,513.22

340 Technical Services 126,737.18

350 Security / Safety Services 97,624.74

360 Employee Training and Development Services 29,750.74

390 Other Purchased Professional and Technical Services 30,687.95

**Total Purchased Professional and Technical Services**

**\$625,724.03**

400 Purchased Property Services

410 Cleaning Services 44,278.00

420 Utility Services 67,816.69

430 Repairs and Maintenance Services 279,285.16

**Total Purchased Property Services**

**\$391,379.85**

500 Other Purchased Services

513 Contracted Carriers 2,895,966.33

516 Student Transportation Services From the IU 8,125.31

519 Student Transportation Services From Other Sources 10,798.70

520 Insurance – General 225.00

521 Fire Insurance 94,297.00

522 Automotive Liability Insurance 9,902.00

523 General Property and Liability Insurance 11,806.00

529 Other Insurance 8,103.24

530 Communications 159,133.97

549 Other Advertising/Public Relations 5,355.42

550 Printing and Binding 51,937.40

580 Travel 30,636.79

595 IU Payments By Withholding 24,183.44

**Total Other Purchased Services**

**\$3,310,470.60**

LEA : 113361303 Cocalico SD

Printed 10/31/2023 11:37:03 AM

General Fund (10)

2000 Support Services

Total

600 Supplies

610 General Supplies	315,807.98
620 Energy	748,622.73
630 Food	21,955.36
640 Books and Periodicals	44,726.63
650 Supplies & Fees – Technology Related	286,752.86

<b>Total Supplies</b>	<b>\$1,417,865.56</b>
-----------------------	-----------------------

700 Property

739 Leases - Other	1,314.45
752 Capital Equipment – Original and Additional	12,986.50
756 Capitalized Technology Equipment – Original	1,569.00
762 Capitalized Equipment - Replacement	6,949.00
766 Capitalized Technology Equipment – Replacement	36,539.00

<b>Total Property</b>	<b>\$59,357.95</b>
-----------------------	--------------------

800 Other Objects

810 Dues and Fees	35,843.21
890 Miscellaneous Expenditures	27,013.28

<b>Total Other Objects</b>	<b>\$62,856.49</b>
----------------------------	--------------------

<b>Total 2000 Support Services</b>	<b>\$20,023,760.83</b>
------------------------------------	------------------------



**General Fund (10)**

	<u>Elementary</u>	<u>Secondary</u>	<u>Federal</u>	<u>Total</u>
<b>2100 Support Services – Students</b>				
<b>100 Personnel Services – Salaries</b>				
100 Personnel Services – Salaries	513,804.75	662,432.28	165,096.93	1,486,788.81
<b>Total Personnel Services – Salaries</b>	<b>\$513,804.75</b>	<b>\$662,432.28</b>	<b>\$165,096.93</b>	<b>\$1,486,788.81</b>
<b>200 Personnel Services – Employee Benefits</b>				
210 Group Insurance – Contracted Provider	767.26	869.64	267.80	2,081.10
220 Social Security Contributions	38,158.34	48,841.43	12,632.24	110,104.51
230 PSERS Retirement Contributions	181,253.24	249,707.82	29,465.68	524,241.37
260 Workers' Compensation	4,938.18	6,313.78	1,639.60	14,289.53
270 Group Insurance – Self-Insurance	116,126.31	138,332.91	30,041.56	323,161.22
<b>Total Personnel Services – Employee Benefits</b>	<b>\$341,243.33</b>	<b>\$444,065.58</b>	<b>\$74,046.88</b>	<b>\$973,877.73</b>
<b>300 Purchased Professional and Technical Services</b>				
322 Professional Educational Services – lus		1,406.81		1,406.81
330 Other Professional Services	10.80	2,149.20	48,165.00	50,325.00
390 Other Purchased Professional and Technical Services	2,014.40			2,014.40
<b>Total Purchased Professional and Technical Services</b>	<b>\$2,025.20</b>	<b>\$3,556.01</b>	<b>\$48,165.00</b>	<b>\$53,746.21</b>
<b>400 Purchased Property Services</b>				
430 Repairs and Maintenance Services	7.65	4,010.29		4,017.94
<b>Total Purchased Property Services</b>	<b>\$7.65</b>	<b>\$4,010.29</b>		<b>\$4,017.94</b>
<b>500 Other Purchased Services</b>				
580 Travel	537.62	495.77		2,864.41
<b>Total Other Purchased Services</b>	<b>\$537.62</b>	<b>\$495.77</b>		<b>\$2,864.41</b>
<b>600 Supplies</b>				
610 General Supplies	4,040.67	15,885.39		19,951.90
630 Food		352.02		352.02
640 Books and Periodicals	462.04	838.37		1,405.93
650 Supplies & Fees – Technology Related	403.71	11,453.66		11,857.37
<b>Total Supplies</b>	<b>\$4,906.42</b>	<b>\$28,529.44</b>		<b>\$33,567.22</b>
<b>700 Property</b>				
766 Capitalized Technology Equipment – Replacement		2,518.00		2,518.00
<b>Total Property</b>		<b>\$2,518.00</b>		<b>\$2,518.00</b>
<b>800 Other Objects</b>				
810 Dues and Fees	336.34	2,912.66		3,439.00
<b>Total Other Objects</b>	<b>\$336.34</b>	<b>\$2,912.66</b>		<b>\$3,439.00</b>
<b>Total 2100 Support Services – Students</b>	<b>\$862,861.31</b>	<b>\$1,148,520.03</b>	<b>\$287,308.81</b>	<b>\$2,560,819.32</b>

**General Fund (10)**

	<u>Elementary</u>	<u>Secondary</u>	<u>Federal</u>	<u>Total</u>
<b>2120 Guidance Services</b>				
<b>100 Personnel Services – Salaries</b>				
100 Personnel Services – Salaries	245,052.98	563,515.45	18,878.57	827,447.00
<b>Total Personnel Services – Salaries</b>	<b>\$245,052.98</b>	<b>\$563,515.45</b>	<b>\$18,878.57</b>	<b>\$827,447.00</b>
<b>200 Personnel Services – Employee Benefits</b>				
210 Group Insurance – Contracted Provider	389.13	718.57	36.80	1,144.50
220 Social Security Contributions	18,244.11	41,353.88	1,608.13	61,206.12
230 PSERS Retirement Contributions	86,425.20	201,645.06	3,687.40	291,757.66
260 Workers' Compensation	2,355.21	5,363.09	234.30	7,952.60
270 Group Insurance – Self-Insurance	58,087.31	109,385.89	6,498.80	173,972.00
<b>Total Personnel Services – Employee Benefits</b>	<b>\$165,500.96</b>	<b>\$358,466.49</b>	<b>\$12,065.43</b>	<b>\$536,032.88</b>
<b>300 Purchased Professional and Technical Services</b>				
330 Other Professional Services			48,165.00	48,165.00
390 Other Purchased Professional and Technical Services	2,014.40			2,014.40
<b>Total Purchased Professional and Technical Services</b>	<b>\$2,014.40</b>		<b>\$48,165.00</b>	<b>\$50,179.40</b>
<b>400 Purchased Property Services</b>				
430 Repairs and Maintenance Services		2,487.44		2,487.44
<b>Total Purchased Property Services</b>		<b>\$2,487.44</b>		<b>\$2,487.44</b>
<b>500 Other Purchased Services</b>				
580 Travel	2.49	495.77		498.26
<b>Total Other Purchased Services</b>	<b>\$2.49</b>	<b>\$495.77</b>		<b>\$498.26</b>
<b>600 Supplies</b>				
610 General Supplies	3,546.18	5,318.84		8,865.02
630 Food		352.02		352.02
640 Books and Periodicals	461.69			461.69
650 Supplies & Fees – Technology Related	390.00	8,725.87		9,115.87
<b>Total Supplies</b>	<b>\$4,397.87</b>	<b>\$14,396.73</b>		<b>\$18,794.60</b>
<b>700 Property</b>				
766 Capitalized Technology Equipment – Replacement		2,518.00		2,518.00
<b>Total Property</b>		<b>\$2,518.00</b>		<b>\$2,518.00</b>
<b>800 Other Objects</b>				
810 Dues and Fees	328.64	1,381.36		1,710.00
<b>Total Other Objects</b>	<b>\$328.64</b>	<b>\$1,381.36</b>		<b>\$1,710.00</b>
<b>Total 2120 Guidance Services</b>	<b>\$417,297.34</b>	<b>\$943,261.24</b>	<b>\$79,109.00</b>	<b>\$1,439,667.58</b>

**General Fund (10)**

**2140 Psychological Services**

	<u>Elementary</u>	<u>Secondary</u>	<u>Federal</u>	<u>Total</u>
<b>100 Personnel Services – Salaries</b>				
100 Personnel Services – Salaries	268,751.77	98,916.83	75,162.00	442,830.60
<b>Total Personnel Services – Salaries</b>	<b>\$268,751.77</b>	<b>\$98,916.83</b>	<b>\$75,162.00</b>	<b>\$442,830.60</b>
<b>200 Personnel Services – Employee Benefits</b>				
210 Group Insurance – Contracted Provider	378.13	151.07	105.00	634.20
220 Social Security Contributions	19,914.23	7,487.55	5,669.46	33,071.24
230 PSERS Retirement Contributions	94,828.04	48,062.76	13,251.03	156,141.83
260 Workers' Compensation	2,582.97	950.69	722.38	4,256.04
270 Group Insurance – Self-Insurance	58,039.00	28,947.02	11,771.38	98,757.40
<b>Total Personnel Services – Employee Benefits</b>	<b>\$175,742.37</b>	<b>\$85,599.09</b>	<b>\$31,519.25</b>	<b>\$292,860.71</b>
<b>300 Purchased Professional and Technical Services</b>				
322 Professional Educational Services – lus		1,406.81		1,406.81
330 Other Professional Services	10.80	2,149.20		2,160.00
<b>Total Purchased Professional and Technical Services</b>	<b>\$10.80</b>	<b>\$3,556.01</b>		<b>\$3,566.81</b>
<b>400 Purchased Property Services</b>				
430 Repairs and Maintenance Services	7.65	1,522.85		1,530.50
<b>Total Purchased Property Services</b>	<b>\$7.65</b>	<b>\$1,522.85</b>		<b>\$1,530.50</b>
<b>500 Other Purchased Services</b>				
580 Travel	535.13			535.13
<b>Total Other Purchased Services</b>	<b>\$535.13</b>			<b>\$535.13</b>
<b>600 Supplies</b>				
610 General Supplies	494.49	10,566.55		11,061.04
640 Books and Periodicals	0.35	838.37		838.72
650 Supplies & Fees – Technology Related	13.71	2,727.79		2,741.50
<b>Total Supplies</b>	<b>\$508.55</b>	<b>\$14,132.71</b>		<b>\$14,641.26</b>
<b>800 Other Objects</b>				
810 Dues and Fees	7.70	1,531.30		1,539.00
<b>Total Other Objects</b>	<b>\$7.70</b>	<b>\$1,531.30</b>		<b>\$1,539.00</b>
<b>Total 2140 Psychological Services</b>	<b>\$445,563.97</b>	<b>\$205,258.79</b>	<b>\$106,681.25</b>	<b>\$757,504.01</b>

**General Fund (10)**

**2160 Social Work Services**

Elementary                      Secondary                      Federal                      Total

**100 Personnel Services – Salaries**

100 Personnel Services – Salaries 71,056.36 157,667.36

**Total Personnel Services – Salaries** **\$71,056.36** **\$157,667.36**

**200 Personnel Services – Employee Benefits**

210 Group Insurance – Contracted Provider 126.00 252.00

220 Social Security Contributions 5,354.65 11,653.24

230 PSERS Retirement Contributions 12,527.25 55,593.53

260 Workers' Compensation 682.92 1,515.34

270 Group Insurance – Self-Insurance 11,771.38 31,101.60

**Total Personnel Services – Employee Benefits** **\$30,462.20** **\$100,115.71**

**500 Other Purchased Services**

580 Travel 1,831.02

**Total Other Purchased Services** **\$1,831.02**

**600 Supplies**

610 General Supplies 25.84

640 Books and Periodicals 105.52

**Total Supplies** **\$131.36**

**800 Other Objects**

810 Dues and Fees 190.00

**Total Other Objects** **\$190.00**

**Total 2160 Social Work Services** **\$101,518.56** **\$259,935.45**

General Fund (10)

2170 Student Accounting Services

Elementary

Secondary

Federal

Total

100 Personnel Services – Salaries

100 Personnel Services – Salaries

58,843.85

**Total Personnel Services – Salaries**

**\$58,843.85**

200 Personnel Services – Employee Benefits

210 Group Insurance – Contracted Provider

50.40

220 Social Security Contributions

4,173.91

230 PSERS Retirement Contributions

20,748.35

260 Workers' Compensation

565.55

270 Group Insurance – Self-Insurance

19,330.22

**Total Personnel Services – Employee Benefits**

**\$44,868.43**

**Total 2170 Student Accounting Services**

**\$103,712.28**

**General Fund (10)**

**2200 Support Services – Instructional Staff**

	<u>Elementary</u>	<u>Secondary</u>	<u>Federal</u>	<u>Total</u>
<b>100 Personnel Services – Salaries</b>				
100 Personnel Services – Salaries	543,313.11	762,644.36	98,122.00	1,404,079.47
<b>Total Personnel Services – Salaries</b>	<b>\$543,313.11</b>	<b>\$762,644.36</b>	<b>\$98,122.00</b>	<b>\$1,404,079.47</b>
<b>200 Personnel Services – Employee Benefits</b>				
210 Group Insurance – Contracted Provider	719.46	931.14	126.00	1,776.60
220 Social Security Contributions	39,656.17	56,544.03	6,983.11	103,183.31
230 PSERS Retirement Contributions	191,797.48	285,479.65	17,283.76	494,560.89
240 Tuition Reimbursement	72,916.15	126,787.22		199,703.37
260 Workers' Compensation	5,221.80	8,137.09	135.71	13,494.60
270 Group Insurance – Self-Insurance	97,165.55	179,691.00	25,563.60	302,420.15
291 Other Retirement Plans	1,094.45	1,094.45		2,188.90
299 All Other Employee Benefits	56.06	11,156.05		11,212.11
<b>Total Personnel Services – Employee Benefits</b>	<b>\$408,627.12</b>	<b>\$669,820.63</b>	<b>\$50,092.18</b>	<b>\$1,128,539.93</b>
<b>300 Purchased Professional and Technical Services</b>				
322 Professional Educational Services – Ius	780.00	1,560.00		2,340.00
323 Professional Educational Services – Other Educational Agencies	3,000.00	10,200.00	7,197.00	20,397.00
329 Professional Educational Services – Other	22,710.08	25,718.48	991.72	49,420.28
360 Employee Training and Development Services	3,367.40	6,726.40	2,396.00	12,489.80
<b>Total Purchased Professional and Technical Services</b>	<b>\$29,857.48</b>	<b>\$44,204.88</b>	<b>\$10,584.72</b>	<b>\$84,647.08</b>
<b>400 Purchased Property Services</b>				
430 Repairs and Maintenance Services	2,636.87	2,513.94		5,150.81
<b>Total Purchased Property Services</b>	<b>\$2,636.87</b>	<b>\$2,513.94</b>		<b>\$5,150.81</b>
<b>500 Other Purchased Services</b>				
550 Printing and Binding	1.06	211.44		212.50
580 Travel	3,085.55	3,122.23		6,207.78
<b>Total Other Purchased Services</b>	<b>\$3,086.61</b>	<b>\$3,333.67</b>		<b>\$6,420.28</b>
<b>600 Supplies</b>				
610 General Supplies	2,065.07	14,305.35		16,370.42
630 Food	7.00	1,393.07		1,400.07
640 Books and Periodicals	14,689.25	16,877.36	8,207.45	39,774.06
650 Supplies & Fees – Technology Related	11,526.95	42,113.74		53,640.69
<b>Total Supplies</b>	<b>\$28,288.27</b>	<b>\$74,689.52</b>	<b>\$8,207.45</b>	<b>\$111,185.24</b>
<b>700 Property</b>				
739 Leases - Other	657.23	657.22		1,314.45
766 Capitalized Technology Equipment – Replacement	6,150.20	5,328.80		11,479.00
<b>Total Property</b>	<b>\$6,807.43</b>	<b>\$5,986.02</b>		<b>\$12,793.45</b>
<b>800 Other Objects</b>				
810 Dues and Fees	183.22	1,295.18	3,400.00	4,878.40
<b>Total Other Objects</b>	<b>\$183.22</b>	<b>\$1,295.18</b>	<b>\$3,400.00</b>	<b>\$4,878.40</b>
<b>Total 2200 Support Services – Instructional Staff</b>	<b>\$1,022,800.11</b>	<b>\$1,564,488.20</b>	<b>\$170,406.35</b>	<b>\$2,757,694.66</b>

**General Fund (10)**

**2240 Computer-Assisted Instruction Support Services**

	<u>Elementary</u>	<u>Secondary</u>	<u>Federal</u>	<u>Total</u>
<b>100 Personnel Services – Salaries</b>				
100 Personnel Services – Salaries	443.07	88,171.41		88,614.48
<b>Total Personnel Services – Salaries</b>	<b>\$443.07</b>	<b>\$88,171.41</b>		<b>\$88,614.48</b>
<b>200 Personnel Services – Employee Benefits</b>				
210 Group Insurance – Contracted Provider	0.63	125.37		126.00
220 Social Security Contributions	32.29	6,425.07		6,457.36
230 PSERS Retirement Contributions	156.22	31,089.24		31,245.46
260 Workers' Compensation	4.26	847.41		851.67
270 Group Insurance – Self-Insurance	127.82	25,435.78		25,563.60
<b>Total Personnel Services – Employee Benefits</b>	<b>\$321.22</b>	<b>\$63,922.87</b>		<b>\$64,244.09</b>
<b>600 Supplies</b>				
610 General Supplies	0.49	96.69		97.18
<b>Total Supplies</b>	<b>\$0.49</b>	<b>\$96.69</b>		<b>\$97.18</b>
<b>Total 2240 Computer-Assisted Instruction Support Services</b>	<b>\$764.78</b>	<b>\$152,190.97</b>		<b>\$152,955.75</b>

**General Fund (10)**

	<u>Elementary</u>	<u>Secondary</u>	<u>Federal</u>	<u>Total</u>
<b>2250 School Library Services</b>				
<b>100 Personnel Services – Salaries</b>				
100 Personnel Services – Salaries	325,942.85	214,286.21		540,229.06
<b>Total Personnel Services – Salaries</b>	<b>\$325,942.85</b>	<b>\$214,286.21</b>		<b>\$540,229.06</b>
<b>200 Personnel Services – Employee Benefits</b>				
210 Group Insurance – Contracted Provider	453.60	352.80		806.40
220 Social Security Contributions	23,303.39	15,433.99		38,737.38
230 PSERS Retirement Contributions	114,464.76	75,502.49		189,967.25
260 Workers' Compensation	3,132.64	2,059.50		5,192.14
270 Group Insurance – Self-Insurance	96,651.12	77,320.90		173,972.02
<b>Total Personnel Services – Employee Benefits</b>	<b>\$238,005.51</b>	<b>\$170,669.68</b>		<b>\$408,675.19</b>
<b>300 Purchased Professional and Technical Services</b>				
329 Professional Educational Services – Other	7,821.58	3,162.94		10,984.52
<b>Total Purchased Professional and Technical Services</b>	<b>\$7,821.58</b>	<b>\$3,162.94</b>		<b>\$10,984.52</b>
<b>400 Purchased Property Services</b>				
430 Repairs and Maintenance Services	2,636.87	2,513.94		5,150.81
<b>Total Purchased Property Services</b>	<b>\$2,636.87</b>	<b>\$2,513.94</b>		<b>\$5,150.81</b>
<b>500 Other Purchased Services</b>				
580 Travel	137.33	175.17		312.50
<b>Total Other Purchased Services</b>	<b>\$137.33</b>	<b>\$175.17</b>		<b>\$312.50</b>
<b>600 Supplies</b>				
610 General Supplies	2,020.05	5,347.95		7,368.00
640 Books and Periodicals	14,194.30	16,852.49		31,046.79
650 Supplies & Fees – Technology Related	11,467.91	30,364.48		41,832.39
<b>Total Supplies</b>	<b>\$27,682.26</b>	<b>\$52,564.92</b>		<b>\$80,247.18</b>
<b>700 Property</b>				
766 Capitalized Technology Equipment – Replacement	6,144.00	4,096.00		10,240.00
<b>Total Property</b>	<b>\$6,144.00</b>	<b>\$4,096.00</b>		<b>\$10,240.00</b>
<b>800 Other Objects</b>				
810 Dues and Fees	180.00	656.40		836.40
<b>Total Other Objects</b>	<b>\$180.00</b>	<b>\$656.40</b>		<b>\$836.40</b>
<b>Total 2250 School Library Services</b>	<b>\$608,550.40</b>	<b>\$448,125.26</b>		<b>\$1,056,675.66</b>



**General Fund (10)**

**2260 Instruction and Curriculum Development Services**

	<u>Elementary</u>	<u>Secondary</u>	<u>Federal</u>	<u>Total</u>
<b>100 Personnel Services – Salaries</b>				
100 Personnel Services – Salaries	161,622.93	272,701.70	83,918.00	518,242.63
<b>Total Personnel Services – Salaries</b>	<b>\$161,622.93</b>	<b>\$272,701.70</b>	<b>\$83,918.00</b>	<b>\$518,242.63</b>
<b>200 Personnel Services – Employee Benefits</b>				
210 Group Insurance – Contracted Provider	264.60	327.60	126.00	718.20
220 Social Security Contributions	12,217.89	20,592.07	5,924.84	38,734.80
230 PSERS Retirement Contributions	56,988.25	110,949.04	14,794.75	182,732.04
260 Workers' Compensation	1,553.37	3,427.46		4,980.83
270 Group Insurance – Self-Insurance	289.96	57,700.75	25,563.60	83,554.31
291 Other Retirement Plans	1,094.45	1,094.45		2,188.90
299 All Other Employee Benefits	34.02	6,769.29		6,803.31
<b>Total Personnel Services – Employee Benefits</b>	<b>\$72,442.54</b>	<b>\$200,860.66</b>	<b>\$46,409.19</b>	<b>\$319,712.39</b>
<b>300 Purchased Professional and Technical Services</b>				
329 Professional Educational Services – Other	30.75	6,553.03		6,583.78
<b>Total Purchased Professional and Technical Services</b>	<b>\$30.75</b>	<b>\$6,553.03</b>		<b>\$6,583.78</b>
<b>500 Other Purchased Services</b>				
550 Printing and Binding	1.06	211.44		212.50
580 Travel	1,206.95	1,567.94		2,774.89
<b>Total Other Purchased Services</b>	<b>\$1,208.01</b>	<b>\$1,779.38</b>		<b>\$2,987.39</b>
<b>600 Supplies</b>				
610 General Supplies	5.01	996.14		1,001.15
630 Food	1.03	204.86		205.89
640 Books and Periodicals	0.12	24.87		24.99
650 Supplies & Fees – Technology Related	1.22	243.18		244.40
<b>Total Supplies</b>	<b>\$7.38</b>	<b>\$1,469.05</b>		<b>\$1,476.43</b>
<b>700 Property</b>				
739 Leases - Other	657.23	657.22		1,314.45
766 Capitalized Technology Equipment – Replacement	6.20	1,232.80		1,239.00
<b>Total Property</b>	<b>\$663.43</b>	<b>\$1,890.02</b>		<b>\$2,553.45</b>
<b>800 Other Objects</b>				
810 Dues and Fees	1.30	257.70		259.00
<b>Total Other Objects</b>	<b>\$1.30</b>	<b>\$257.70</b>		<b>\$259.00</b>
<b>Total 2260 Instruction and Curriculum Development Services</b>	<b>\$235,976.34</b>	<b>\$485,511.54</b>	<b>\$130,327.19</b>	<b>\$851,815.07</b>

**General Fund (10)**

2270 Instructional Staff Professional Development Services	<u>Elementary</u>	<u>Secondary</u>	<u>Federal</u>	<u>Total</u>
<b>100 Personnel Services – Salaries</b>				
100 Personnel Services – Salaries	54,759.20	79,018.10	14,204.00	147,981.30
<b>Total Personnel Services – Salaries</b>	<b>\$54,759.20</b>	<b>\$79,018.10</b>	<b>\$14,204.00</b>	<b>\$147,981.30</b>
<b>200 Personnel Services – Employee Benefits</b>				
220 Social Security Contributions	4,061.45	5,903.71	1,058.27	11,023.43
230 PSERS Retirement Contributions	19,996.06	29,693.41	2,489.01	52,178.48
240 Tuition Reimbursement	72,916.15	126,787.22		199,703.37
260 Workers' Compensation	526.29	760.25	135.71	1,422.25
<b>Total Personnel Services – Employee Benefits</b>	<b>\$97,499.95</b>	<b>\$163,144.59</b>	<b>\$3,682.99</b>	<b>\$264,327.53</b>
<b>300 Purchased Professional and Technical Services</b>				
322 Professional Educational Services – Ius	780.00	1,560.00		2,340.00
323 Professional Educational Services – Other Educational Agencies	3,000.00	10,200.00	7,197.00	20,397.00
329 Professional Educational Services – Other	14,857.75	16,002.51	991.72	31,851.98
360 Employee Training and Development Services	3,367.40	6,726.40	2,396.00	12,489.80
<b>Total Purchased Professional and Technical Services</b>	<b>\$22,005.15</b>	<b>\$34,488.91</b>	<b>\$10,584.72</b>	<b>\$67,078.78</b>
<b>500 Other Purchased Services</b>				
580 Travel	1,741.27	1,379.12		3,120.39
<b>Total Other Purchased Services</b>	<b>\$1,741.27</b>	<b>\$1,379.12</b>		<b>\$3,120.39</b>
<b>600 Supplies</b>				
610 General Supplies	38.12	7,585.42		7,623.54
630 Food	5.97	1,188.21		1,194.18
640 Books and Periodicals	494.83		8,207.45	8,702.28
650 Supplies & Fees – Technology Related	57.82	11,506.08		11,563.90
<b>Total Supplies</b>	<b>\$596.74</b>	<b>\$20,279.71</b>	<b>\$8,207.45</b>	<b>\$29,083.90</b>
<b>800 Other Objects</b>				
810 Dues and Fees	1.00	199.00	3,400.00	3,600.00
<b>Total Other Objects</b>	<b>\$1.00</b>	<b>\$199.00</b>	<b>\$3,400.00</b>	<b>\$3,600.00</b>
<b>Total 2270 Instructional Staff Professional Development Services</b>	<b>\$176,603.31</b>	<b>\$298,509.43</b>	<b>\$40,079.16</b>	<b>\$515,191.90</b>

**General Fund (10)**

	<u>Elementary</u>	<u>Secondary</u>	<u>Federal</u>	<u>Total</u>
<b>2290 Other Instructional Staff Services</b>				
<b>100 Personnel Services – Salaries</b>				
100 Personnel Services – Salaries	545.06	108,466.94		109,012.00
<b>Total Personnel Services – Salaries</b>	<b>\$545.06</b>	<b>\$108,466.94</b>		<b>\$109,012.00</b>
<b>200 Personnel Services – Employee Benefits</b>				
210 Group Insurance – Contracted Provider	0.63	125.37		126.00
220 Social Security Contributions	41.15	8,189.19		8,230.34
230 PSERS Retirement Contributions	192.19	38,245.47		38,437.66
260 Workers' Compensation	5.24	1,042.47		1,047.71
270 Group Insurance – Self-Insurance	96.65	19,233.57		19,330.22
299 All Other Employee Benefits	22.04	4,386.76		4,408.80
<b>Total Personnel Services – Employee Benefits</b>	<b>\$357.90</b>	<b>\$71,222.83</b>		<b>\$71,580.73</b>
<b>600 Supplies</b>				
610 General Supplies	1.40	279.15		280.55
<b>Total Supplies</b>	<b>\$1.40</b>	<b>\$279.15</b>		<b>\$280.55</b>
<b>800 Other Objects</b>				
810 Dues and Fees	0.92	182.08		183.00
<b>Total Other Objects</b>	<b>\$0.92</b>	<b>\$182.08</b>		<b>\$183.00</b>
<b>Total 2290 Other Instructional Staff Services</b>	<b>\$905.28</b>	<b>\$180,151.00</b>		<b>\$181,056.28</b>

**General Fund (10)**

	<u>Elementary</u>	<u>Secondary</u>	<u>Federal</u>	<u>Total</u>
<b>2300 Support Services – Administration</b>				
<b>100 Personnel Services – Salaries</b>				
100 Personnel Services – Salaries	633,538.41	872,708.45		2,198,087.88
<b>Total Personnel Services – Salaries</b>	<b>\$633,538.41</b>	<b>\$872,708.45</b>		<b>\$2,198,087.88</b>
<b>200 Personnel Services – Employee Benefits</b>				
210 Group Insurance – Contracted Provider	1,761.90	2,377.20		5,537.70
220 Social Security Contributions	47,031.22	63,668.60		160,293.73
230 PSERS Retirement Contributions	221,298.12	306,944.98		771,543.67
260 Workers' Compensation	6,088.94	8,387.60		21,125.83
270 Group Insurance – Self-Insurance	193,302.23	289,953.36		618,567.15
291 Other Retirement Plans	37,646.73	135,281.02		182,663.35
299 All Other Employee Benefits	169.97	33,824.04		51,629.21
<b>Total Personnel Services – Employee Benefits</b>	<b>\$507,299.11</b>	<b>\$840,436.80</b>		<b>\$1,811,360.64</b>
<b>300 Purchased Professional and Technical Services</b>				
310 Official / Administrative Services				71,578.08
329 Professional Educational Services – Other		24,188.75		24,188.75
330 Other Professional Services				84,733.67
390 Other Purchased Professional and Technical Services				7,978.56
<b>Total Purchased Professional and Technical Services</b>		<b>\$24,188.75</b>		<b>\$188,479.06</b>
<b>400 Purchased Property Services</b>				
430 Repairs and Maintenance Services				4,994.99
<b>Total Purchased Property Services</b>				<b>\$4,994.99</b>
<b>500 Other Purchased Services</b>				
520 Insurance – General				225.00
530 Communications				605.61
549 Other Advertising/Public Relations				2,599.46
550 Printing and Binding	1,458.75	6,437.37		7,896.12
580 Travel	555.52			2,547.85
<b>Total Other Purchased Services</b>	<b>\$2,014.27</b>	<b>\$6,437.37</b>		<b>\$13,874.04</b>
<b>600 Supplies</b>				
610 General Supplies	10,971.46	7,982.96		36,114.27
630 Food	1,793.78	5,160.65		19,364.78
640 Books and Periodicals	1,049.31	179.60		3,546.64
650 Supplies & Fees – Technology Related	952.22	5,620.40		10,720.18
<b>Total Supplies</b>	<b>\$14,766.77</b>	<b>\$18,943.61</b>		<b>\$69,745.87</b>
<b>700 Property</b>				
756 Capitalized Technology Equipment – Original		1,569.00		1,569.00
762 Capitalized Equipment - Replacement		6,949.00		6,949.00
766 Capitalized Technology Equipment – Replacement	7,434.00	9,912.00		17,346.00
<b>Total Property</b>	<b>\$7,434.00</b>	<b>\$18,430.00</b>		<b>\$25,864.00</b>
<b>800 Other Objects</b>				
810 Dues and Fees	3,492.69	2,795.98		25,976.81

LEA : 113361303 Cocalico SD

Printed 10/31/2023 11:37:03 AM

General Fund (10)

2300 Support Services – Administration

	<u>Elementary</u>	<u>Secondary</u>	<u>Federal</u>	<u>Total</u>
Total Other Objects	\$3,492.69	\$2,795.98		\$25,976.81
Total 2300 Support Services – Administration	\$1,168,545.25	\$1,783,940.96		\$4,338,383.29

General Fund (10)

2310 Board Services

Elementary

Secondary

Federal

Total

300 Purchased Professional and Technical Services

330 Other Professional Services

60,768.00

**Total Purchased Professional and Technical Services**

**\$60,768.00**

500 Other Purchased Services

549 Other Advertising/Public Relations

2,599.46

580 Travel

67.66

**Total Other Purchased Services**

**\$2,667.12**

600 Supplies

610 General Supplies

1,992.42

630 Food

4,298.83

650 Supplies & Fees – Technology Related

3,900.00

**Total Supplies**

**\$10,191.25**

800 Other Objects

810 Dues and Fees

14,573.14

**Total Other Objects**

**\$14,573.14**

**Total 2310 Board Services**

**\$88,199.51**

**General Fund (10)**

	<u>Elementary</u>	<u>Secondary</u>	<u>Federal</u>	<u>Total</u>
<b>2330 Tax Assessment and Collection Services</b>				
<b>100 Personnel Services – Salaries</b>				
100 Personnel Services – Salaries				45,712.90
<b>Total Personnel Services – Salaries</b>				<b>\$45,712.90</b>
<b>200 Personnel Services – Employee Benefits</b>				
210 Group Insurance – Contracted Provider				37.80
220 Social Security Contributions				3,270.30
230 PSERS Retirement Contributions				15,475.83
260 Workers' Compensation				439.35
270 Group Insurance – Self-Insurance				19,330.22
<b>Total Personnel Services – Employee Benefits</b>				<b>\$38,553.50</b>
<b>300 Purchased Professional and Technical Services</b>				
310 Official / Administrative Services				71,578.08
<b>Total Purchased Professional and Technical Services</b>				<b>\$71,578.08</b>
<b>500 Other Purchased Services</b>				
520 Insurance – General				225.00
<b>Total Other Purchased Services</b>				<b>\$225.00</b>
<b>600 Supplies</b>				
610 General Supplies				2,559.12
<b>Total Supplies</b>				<b>\$2,559.12</b>
<b>Total 2330 Tax Assessment and Collection Services</b>				<b>\$158,628.60</b>

General Fund (10)

2350 Legal and Accounting Services

Elementary

Secondary

Federal

Total

300 Purchased Professional and Technical Services

330 Other Professional Services

23,965.67

**Total Purchased Professional and Technical Services**

**\$23,965.67**

**Total 2350 Legal and Accounting Services**

**\$23,965.67**



**General Fund (10)**

**2360 Office of the Superintendent / Executive Director Services**

Elementary

Secondary

Federal

Total

<b>100 Personnel Services – Salaries</b>				
100 Personnel Services – Salaries				584,178.12
<b>Total Personnel Services – Salaries</b>				<b>\$584,178.12</b>
<b>200 Personnel Services – Employee Benefits</b>				
210 Group Insurance – Contracted Provider				1,234.80
220 Social Security Contributions				41,584.40
230 PSERS Retirement Contributions				205,981.25
260 Workers' Compensation				5,614.54
270 Group Insurance – Self-Insurance				96,651.12
291 Other Retirement Plans				9,735.60
299 All Other Employee Benefits				13,226.40
<b>Total Personnel Services – Employee Benefits</b>				<b>\$374,028.11</b>
<b>300 Purchased Professional and Technical Services</b>				
390 Other Purchased Professional and Technical Services				7,978.56
<b>Total Purchased Professional and Technical Services</b>				<b>\$7,978.56</b>
<b>400 Purchased Property Services</b>				
430 Repairs and Maintenance Services				4,994.99
<b>Total Purchased Property Services</b>				<b>\$4,994.99</b>
<b>500 Other Purchased Services</b>				
580 Travel				1,459.24
<b>Total Other Purchased Services</b>				<b>\$1,459.24</b>
<b>600 Supplies</b>				
610 General Supplies				4,937.98
630 Food				7,950.64
640 Books and Periodicals				2,317.73
650 Supplies & Fees – Technology Related				247.56
<b>Total Supplies</b>				<b>\$15,453.91</b>
<b>800 Other Objects</b>				
810 Dues and Fees				4,439.00
<b>Total Other Objects</b>				<b>\$4,439.00</b>
<b>Total 2360 Office of the Superintendent / Executive Director Services</b>				<b>\$992,531.93</b>

**General Fund (10)**

**2370 Community Relations Services**

Elementary                      Secondary                      Federal                      Total

**100 Personnel Services – Salaries**

100 Personnel Services – Salaries 61,950.00

**Total Personnel Services – Salaries \$61,950.00**

**200 Personnel Services – Employee Benefits**

210 Group Insurance – Contracted Provider 126.00

220 Social Security Contributions 4,739.21

230 PSERS Retirement Contributions 21,843.49

260 Workers' Compensation 595.40

270 Group Insurance – Self-Insurance 19,330.22

299 All Other Employee Benefits 4,408.80

**Total Personnel Services – Employee Benefits \$51,043.12**

**500 Other Purchased Services**

530 Communications 605.61

580 Travel 465.43

**Total Other Purchased Services \$1,071.04**

**600 Supplies**

610 General Supplies 1,342.71

630 Food 160.88

**Total Supplies \$1,503.59**

**800 Other Objects**

810 Dues and Fees 676.00

**Total Other Objects \$676.00**

**Total 2370 Community Relations Services \$116,243.75**

**General Fund (10)**

**2380 Office of the Principal Services**

	<u>Elementary</u>	<u>Secondary</u>	<u>Federal</u>	<u>Total</u>
<b>100 Personnel Services – Salaries</b>				
100 Personnel Services – Salaries	633,538.41	872,708.45		1,506,246.86
<b>Total Personnel Services – Salaries</b>	<b>\$633,538.41</b>	<b>\$872,708.45</b>		<b>\$1,506,246.86</b>
<b>200 Personnel Services – Employee Benefits</b>				
210 Group Insurance – Contracted Provider	1,761.90	2,377.20		4,139.10
220 Social Security Contributions	47,031.22	63,668.60		110,699.82
230 PSERS Retirement Contributions	221,298.12	306,944.98		528,243.10
260 Workers' Compensation	6,088.94	8,387.60		14,476.54
270 Group Insurance – Self-Insurance	193,302.23	289,953.36		483,255.59
291 Other Retirement Plans	37,646.73	135,281.02		172,927.75
299 All Other Employee Benefits	169.97	33,824.04		33,994.01
<b>Total Personnel Services – Employee Benefits</b>	<b>\$507,299.11</b>	<b>\$840,436.80</b>		<b>\$1,347,735.91</b>
<b>300 Purchased Professional and Technical Services</b>				
329 Professional Educational Services – Other		24,188.75		24,188.75
<b>Total Purchased Professional and Technical Services</b>		<b>\$24,188.75</b>		<b>\$24,188.75</b>
<b>500 Other Purchased Services</b>				
550 Printing and Binding	1,458.75	6,437.37		7,896.12
580 Travel	555.52			555.52
<b>Total Other Purchased Services</b>	<b>\$2,014.27</b>	<b>\$6,437.37</b>		<b>\$8,451.64</b>
<b>600 Supplies</b>				
610 General Supplies	10,971.46	7,982.96		18,954.42
630 Food	1,793.78	5,160.65		6,954.43
640 Books and Periodicals	1,049.31	179.60		1,228.91
650 Supplies & Fees – Technology Related	952.22	5,620.40		6,572.62
<b>Total Supplies</b>	<b>\$14,766.77</b>	<b>\$18,943.61</b>		<b>\$33,710.38</b>
<b>700 Property</b>				
756 Capitalized Technology Equipment – Original		1,569.00		1,569.00
762 Capitalized Equipment - Replacement		6,949.00		6,949.00
766 Capitalized Technology Equipment – Replacement	7,434.00	9,912.00		17,346.00
<b>Total Property</b>	<b>\$7,434.00</b>	<b>\$18,430.00</b>		<b>\$25,864.00</b>
<b>800 Other Objects</b>				
810 Dues and Fees	3,492.69	2,795.98		6,288.67
<b>Total Other Objects</b>	<b>\$3,492.69</b>	<b>\$2,795.98</b>		<b>\$6,288.67</b>
<b>Total 2380 Office of the Principal Services</b>	<b>\$1,168,545.25</b>	<b>\$1,783,940.96</b>		<b>\$2,952,486.21</b>

LEA : 113361303 Cocalico SD

Printed 10/31/2023 11:37:03 AM

General Fund (10)

2390 Other Administration Services

Elementary

Secondary

Federal

Total

600 Supplies

610 General Supplies

6,327.62

<b>Total Supplies</b>				<b>\$6,327.62</b>
<b>Total 2390 Other Administration Services</b>				<b>\$6,327.62</b>

**General Fund (10)**

	<u>Elementary</u>	<u>Secondary</u>	<u>Federal</u>	<u>Total</u>
<b>2400 Support Services – Pupil Health</b>				
<b>100 Personnel Services – Salaries</b>				
100 Personnel Services – Salaries				416,010.27
<b>Total Personnel Services – Salaries</b>				<b>\$416,010.27</b>
<b>200 Personnel Services – Employee Benefits</b>				
210 Group Insurance – Contracted Provider				630.00
220 Social Security Contributions				29,989.78
230 PSERS Retirement Contributions				146,685.10
260 Workers' Compensation				3,998.79
270 Group Insurance – Self-Insurance				135,311.56
<b>Total Personnel Services – Employee Benefits</b>				<b>\$316,615.23</b>
<b>300 Purchased Professional and Technical Services</b>				
329 Professional Educational Services – Other				9,445.28
330 Other Professional Services				66.00
<b>Total Purchased Professional and Technical Services</b>				<b>\$9,511.28</b>
<b>400 Purchased Property Services</b>				
430 Repairs and Maintenance Services				2,604.02
<b>Total Purchased Property Services</b>				<b>\$2,604.02</b>
<b>500 Other Purchased Services</b>				
580 Travel				299.64
<b>Total Other Purchased Services</b>				<b>\$299.64</b>
<b>600 Supplies</b>				
610 General Supplies				7,356.89
<b>Total Supplies</b>				<b>\$7,356.89</b>
<b>800 Other Objects</b>				
810 Dues and Fees				130.00
<b>Total Other Objects</b>				<b>\$130.00</b>
<b>Total 2400 Support Services – Pupil Health</b>				<b>\$752,527.33</b>

LEA : 113361303 Cocalico SD

Printed 10/31/2023 11:37:03 AM

General Fund (10)

2420 Medical Services

Elementary

Secondary

Federal

Total

400 Purchased Property Services

430 Repairs and Maintenance Services

665.00

**Total Purchased Property Services**

**\$665.00**

600 Supplies

610 General Supplies

5,406.88

**Total Supplies**

**\$5,406.88**

**Total 2420 Medical Services**

**\$6,071.88**

General Fund (10)

2430 Dental Services

Elementary

Secondary

Federal

Total

300 Purchased Professional and Technical Services

330 Other Professional Services

66.00

**Total Purchased Professional and Technical Services**

**\$66.00**

600 Supplies

610 General Supplies

104.76

**Total Supplies**

**\$104.76**

**Total 2430 Dental Services**

**\$170.76**

**General Fund (10)**

**2440 Nursing Services**

	<u>Elementary</u>	<u>Secondary</u>	<u>Federal</u>	<u>Total</u>
<b>100 Personnel Services – Salaries</b>				
100 Personnel Services – Salaries				416,010.27
<b>Total Personnel Services – Salaries</b>				<b>\$416,010.27</b>
<b>200 Personnel Services – Employee Benefits</b>				
210 Group Insurance – Contracted Provider				630.00
220 Social Security Contributions				29,989.78
230 PSERS Retirement Contributions				146,685.10
260 Workers' Compensation				3,998.79
270 Group Insurance – Self-Insurance				135,311.56
<b>Total Personnel Services – Employee Benefits</b>				<b>\$316,615.23</b>
<b>300 Purchased Professional and Technical Services</b>				
329 Professional Educational Services – Other				9,445.28
<b>Total Purchased Professional and Technical Services</b>				<b>\$9,445.28</b>
<b>400 Purchased Property Services</b>				
430 Repairs and Maintenance Services				1,939.02
<b>Total Purchased Property Services</b>				<b>\$1,939.02</b>
<b>500 Other Purchased Services</b>				
580 Travel				299.64
<b>Total Other Purchased Services</b>				<b>\$299.64</b>
<b>600 Supplies</b>				
610 General Supplies				1,845.25
<b>Total Supplies</b>				<b>\$1,845.25</b>
<b>800 Other Objects</b>				
810 Dues and Fees				130.00
<b>Total Other Objects</b>				<b>\$130.00</b>
<b>Total 2440 Nursing Services</b>				<b>\$746,284.69</b>



General Fund (10)

2500 Support Services – Business

Elementary                      Secondary                      Federal                      Total

100 Personnel Services – Salaries

100 Personnel Services – Salaries 398,647.85

**Total Personnel Services – Salaries \$398,647.85**

200 Personnel Services – Employee Benefits

210 Group Insurance – Contracted Provider 655.20

220 Social Security Contributions 29,728.76

230 PSERS Retirement Contributions 140,409.74

260 Workers' Compensation 3,831.41

270 Group Insurance – Self-Insurance 96,651.12

291 Other Retirement Plans 3,030.62

299 All Other Employee Benefits 7,543.31

**Total Personnel Services – Employee Benefits \$281,850.16**

300 Purchased Professional and Technical Services

340 Technical Services 33,778.80

**Total Purchased Professional and Technical Services \$33,778.80**

400 Purchased Property Services

430 Repairs and Maintenance Services 9,172.14

**Total Purchased Property Services \$9,172.14**

500 Other Purchased Services

530 Communications 46,978.71

580 Travel 676.41

**Total Other Purchased Services \$47,655.12**

600 Supplies

610 General Supplies 2,981.34

630 Food 41.13

650 Supplies & Fees – Technology Related 3,143.54

**Total Supplies \$6,166.01**

800 Other Objects

810 Dues and Fees 505.37

890 Miscellaneous Expenditures 22,915.58

**Total Other Objects \$23,420.95**

**Total 2500 Support Services – Business \$800,691.03**

**General Fund (10)**

**2510 Fiscal Services**

Elementary                      Secondary                      Federal                      Total

<b>100</b>	<b><u>Personnel Services – Salaries</u></b>			
	100 Personnel Services – Salaries			398,647.85
<b>Total Personnel Services – Salaries</b>				<b>\$398,647.85</b>
<b>200</b>	<b><u>Personnel Services – Employee Benefits</u></b>			
	210 Group Insurance – Contracted Provider			655.20
	220 Social Security Contributions			29,728.76
	230 PSERS Retirement Contributions			140,409.74
	260 Workers' Compensation			3,831.41
	270 Group Insurance – Self-Insurance			96,651.12
	291 Other Retirement Plans			3,030.62
	299 All Other Employee Benefits			7,543.31
<b>Total Personnel Services – Employee Benefits</b>				<b>\$281,850.16</b>
<b>300</b>	<b><u>Purchased Professional and Technical Services</u></b>			
	340 Technical Services			33,778.80
<b>Total Purchased Professional and Technical Services</b>				<b>\$33,778.80</b>
<b>400</b>	<b><u>Purchased Property Services</u></b>			
	430 Repairs and Maintenance Services			9,172.14
<b>Total Purchased Property Services</b>				<b>\$9,172.14</b>
<b>500</b>	<b><u>Other Purchased Services</u></b>			
	530 Communications			46,978.71
	580 Travel			676.41
<b>Total Other Purchased Services</b>				<b>\$47,655.12</b>
<b>600</b>	<b><u>Supplies</u></b>			
	610 General Supplies			2,981.34
	630 Food			41.13
	650 Supplies & Fees – Technology Related			3,143.54
<b>Total Supplies</b>				<b>\$6,166.01</b>
<b>800</b>	<b><u>Other Objects</u></b>			
	810 Dues and Fees			505.37
	890 Miscellaneous Expenditures			22,915.58
<b>Total Other Objects</b>				<b>\$23,420.95</b>
<b>Total 2510 Fiscal Services</b>				<b>\$800,691.03</b>

**General Fund (10)**

**2511 Supervision of Fiscal Services - Head of Component**

	<u>Elementary</u>	<u>Secondary</u>	<u>Federal</u>	<u>Total</u>
<b>100 Personnel Services – Salaries</b>				
100 Personnel Services – Salaries				246,873.00
<b>Total Personnel Services – Salaries</b>				<b>\$246,873.00</b>
<b>200 Personnel Services – Employee Benefits</b>				
210 Group Insurance – Contracted Provider				504.00
220 Social Security Contributions				18,946.46
230 PSERS Retirement Contributions				87,047.41
260 Workers' Compensation				2,372.70
270 Group Insurance – Self-Insurance				38,660.45
291 Other Retirement Plans				3,030.62
299 All Other Employee Benefits				7,543.31
<b>Total Personnel Services – Employee Benefits</b>				<b>\$158,104.95</b>
<b>500 Other Purchased Services</b>				
580 Travel				600.93
<b>Total Other Purchased Services</b>				<b>\$600.93</b>
<b>800 Other Objects</b>				
810 Dues and Fees				505.37
<b>Total Other Objects</b>				<b>\$505.37</b>
<b>Total 2511 Supervision of Fiscal Services - Head of Component</b>				<b>\$406,084.25</b>

General Fund (10)

2515 Financial Accounting Services

Elementary

Secondary

Federal

Total

100 Personnel Services – Salaries

100 Personnel Services – Salaries

151,774.85

**Total Personnel Services – Salaries**

**\$151,774.85**

200 Personnel Services – Employee Benefits

210 Group Insurance – Contracted Provider

151.20

220 Social Security Contributions

10,782.30

230 PSERS Retirement Contributions

53,362.33

260 Workers' Compensation

1,458.71

270 Group Insurance – Self-Insurance

57,990.67

**Total Personnel Services – Employee Benefits**

**\$123,745.21**

300 Purchased Professional and Technical Services

340 Technical Services

33,778.80

**Total Purchased Professional and Technical Services**

**\$33,778.80**

400 Purchased Property Services

430 Repairs and Maintenance Services

9,172.14

**Total Purchased Property Services**

**\$9,172.14**

500 Other Purchased Services

530 Communications

46,978.71

580 Travel

75.48

**Total Other Purchased Services**

**\$47,054.19**

600 Supplies

610 General Supplies

2,981.34

630 Food

41.13

650 Supplies & Fees – Technology Related

3,143.54

**Total Supplies**

**\$6,166.01**

800 Other Objects

890 Miscellaneous Expenditures

22,915.58

**Total Other Objects**

**\$22,915.58**

**Total 2515 Financial Accounting Services**

**\$394,606.78**

**General Fund (10)**

**2600 Operation and Maintenance of Plant Services**

Elementary                      Secondary                      Federal                      Total

<b>100</b>	<b><u>Personnel Services – Salaries</u></b>			
	100 Personnel Services – Salaries			1,215,830.20
<b>Total Personnel Services – Salaries</b>				<b>\$1,215,830.20</b>
<b>200</b>	<b><u>Personnel Services – Employee Benefits</u></b>			
	210 Group Insurance – Contracted Provider			1,633.80
	220 Social Security Contributions			87,832.59
	230 PSERS Retirement Contributions			423,054.49
	260 Workers' Compensation			11,685.35
	270 Group Insurance – Self-Insurance			541,246.27
	291 Other Retirement Plans			143,139.99
	299 All Other Employee Benefits			3,205.68
<b>Total Personnel Services – Employee Benefits</b>				<b>\$1,211,798.17</b>
<b>300</b>	<b><u>Purchased Professional and Technical Services</u></b>			
	350 Security / Safety Services			97,624.74
	390 Other Purchased Professional and Technical Services			19,956.99
<b>Total Purchased Professional and Technical Services</b>				<b>\$117,581.73</b>
<b>400</b>	<b><u>Purchased Property Services</u></b>			
	410 Cleaning Services			44,278.00
	420 Utility Services			67,816.69
	430 Repairs and Maintenance Services			242,798.34
<b>Total Purchased Property Services</b>				<b>\$354,893.03</b>
<b>500</b>	<b><u>Other Purchased Services</u></b>			
	521 Fire Insurance			94,297.00
	522 Automotive Liability Insurance			9,902.00
	523 General Property and Liability Insurance			11,806.00
	529 Other Insurance			8,103.24
	530 Communications			102,541.61
	580 Travel			233.02
<b>Total Other Purchased Services</b>				<b>\$226,882.87</b>
<b>600</b>	<b><u>Supplies</u></b>			
	610 General Supplies	79,184.99	146,409.89	225,594.88
	620 Energy			748,622.73
	630 Food			234.00
	650 Supplies & Fees – Technology Related			5,072.49
<b>Total Supplies</b>		<b>\$79,184.99</b>	<b>\$146,409.89</b>	<b>\$979,524.10</b>
<b>700</b>	<b><u>Property</u></b>			
	752 Capital Equipment – Original and Additional			10,957.50
<b>Total Property</b>				<b>\$10,957.50</b>
<b>800</b>	<b><u>Other Objects</u></b>			
	810 Dues and Fees			114.28
	890 Miscellaneous Expenditures			4,097.70

General Fund (10)

2600 Operation and Maintenance of Plant Services

Elementary

Secondary

Federal

Total

Total Other Objects

\$4,211.98

Total 2600 Operation and Maintenance of Plant Services

\$79,184.99

\$146,409.89

\$4,121,679.58

General Fund (10)

2610 Supervision of Operation and Maintenance of Plant Services

Elementary

Secondary

Federal

Total

100 Personnel Services – Salaries

100 Personnel Services – Salaries

135,177.15

**Total Personnel Services – Salaries**

**\$135,177.15**

200 Personnel Services – Employee Benefits

210 Group Insurance – Contracted Provider

302.40

220 Social Security Contributions

9,978.67

230 PSERS Retirement Contributions

47,663.62

260 Workers' Compensation

1,299.19

270 Group Insurance – Self-Insurance

38,660.45

291 Other Retirement Plans

143,139.99

299 All Other Employee Benefits

3,205.68

**Total Personnel Services – Employee Benefits**

**\$244,250.00**

600 Supplies

610 General Supplies

0.24

48.66

48.90

630 Food

234.00

650 Supplies & Fees – Technology Related

5,071.50

**Total Supplies**

**\$0.24**

**\$48.66**

**\$5,354.40**

800 Other Objects

810 Dues and Fees

114.28

**Total Other Objects**

**\$114.28**

**Total 2610 Supervision of Operation and Maintenance of Plant Services**

**\$0.24**

**\$48.66**

**\$384,895.83**

**General Fund (10)**

	<u>Elementary</u>	<u>Secondary</u>	<u>Federal</u>	<u>Total</u>
<b>2611 Supervision of Operation and Maintenance of Plant Services – Head of Component</b>				
<b>100 Personnel Services – Salaries</b>				
100 Personnel Services – Salaries				135,177.15
<b>Total Personnel Services – Salaries</b>				<b>\$135,177.15</b>
<b>200 Personnel Services – Employee Benefits</b>				
210 Group Insurance – Contracted Provider				302.40
220 Social Security Contributions				9,978.67
230 PSERS Retirement Contributions				47,663.62
260 Workers' Compensation				1,299.19
270 Group Insurance – Self-Insurance				38,660.45
291 Other Retirement Plans				143,139.99
299 All Other Employee Benefits				3,205.68
<b>Total Personnel Services – Employee Benefits</b>				<b>\$244,250.00</b>
<b>600 Supplies</b>				
610 General Supplies	0.24	48.66		48.90
630 Food				234.00
650 Supplies & Fees – Technology Related				5,071.50
<b>Total Supplies</b>	<b>\$0.24</b>	<b>\$48.66</b>		<b>\$5,354.40</b>
<b>800 Other Objects</b>				
810 Dues and Fees				114.28
<b>Total Other Objects</b>				<b>\$114.28</b>
<b>Total 2611 Supervision of Operation and Maintenance of Plant Services – Head of Component</b>	<b>\$0.24</b>	<b>\$48.66</b>		<b>\$384,895.83</b>



**General Fund (10)**

	<u>Elementary</u>	<u>Secondary</u>	<u>Federal</u>	<u>Total</u>
<b>2620 Operation of Buildings Services</b>				
<b>100 Personnel Services – Salaries</b>				
100 Personnel Services – Salaries				1,080,653.05
<b>Total Personnel Services – Salaries</b>				<b>\$1,080,653.05</b>
<b>200 Personnel Services – Employee Benefits</b>				
210 Group Insurance – Contracted Provider				1,331.40
220 Social Security Contributions				77,853.92
230 PSERS Retirement Contributions				375,390.87
260 Workers' Compensation				10,386.16
270 Group Insurance – Self-Insurance				502,585.82
<b>Total Personnel Services – Employee Benefits</b>				<b>\$967,548.17</b>
<b>400 Purchased Property Services</b>				
410 Cleaning Services				44,278.00
420 Utility Services				67,816.69
430 Repairs and Maintenance Services				242,798.34
<b>Total Purchased Property Services</b>				<b>\$354,893.03</b>
<b>500 Other Purchased Services</b>				
521 Fire Insurance				94,297.00
522 Automotive Liability Insurance				9,902.00
523 General Property and Liability Insurance				11,806.00
529 Other Insurance				8,103.24
530 Communications				102,541.61
580 Travel				233.02
<b>Total Other Purchased Services</b>				<b>\$226,882.87</b>
<b>600 Supplies</b>				
610 General Supplies	79,184.75	146,361.23		225,545.98
620 Energy				748,622.73
650 Supplies & Fees – Technology Related				0.99
<b>Total Supplies</b>	<b>\$79,184.75</b>	<b>\$146,361.23</b>		<b>\$974,169.70</b>
<b>700 Property</b>				
752 Capital Equipment – Original and Additional				10,957.50
<b>Total Property</b>				<b>\$10,957.50</b>
<b>800 Other Objects</b>				
890 Miscellaneous Expenditures				4,097.70
<b>Total Other Objects</b>				<b>\$4,097.70</b>
<b>Total 2620 Operation of Buildings Services</b>	<b>\$79,184.75</b>	<b>\$146,361.23</b>		<b>\$3,619,202.02</b>

LEA : 113361303 Cocalico SD

Printed 10/31/2023 11:37:03 AM

General Fund (10)

2660 Safety and Security Services

Elementary

Secondary

Federal

Total

300 Purchased Professional and Technical Services

350 Security / Safety Services

97,624.74

390 Other Purchased Professional and Technical Services

19,956.99

**Total Purchased Professional and Technical Services**

**\$117,581.73**

**Total 2660 Safety and Security Services**

**\$117,581.73**

**General Fund (10)**

**2700 Student Transportation Services**

Elementary                      Secondary                      Federal                      Total

<b>100</b>	<b><u>Personnel Services – Salaries</u></b>			
	100 Personnel Services – Salaries			65,948.21
<b>Total Personnel Services – Salaries</b>				<b>\$65,948.21</b>
<b>200</b>	<b><u>Personnel Services – Employee Benefits</u></b>			
	210 Group Insurance – Contracted Provider			88.20
	220 Social Security Contributions			4,854.56
	230 PSERS Retirement Contributions			23,253.30
	260 Workers' Compensation			633.83
	270 Group Insurance – Self-Insurance			19,330.22
	299 All Other Employee Benefits			1,567.25
<b>Total Personnel Services – Employee Benefits</b>				<b>\$49,727.36</b>
<b>400</b>	<b><u>Purchased Property Services</u></b>			
	430 Repairs and Maintenance Services			8,612.30
<b>Total Purchased Property Services</b>				<b>\$8,612.30</b>
<b>500</b>	<b><u>Other Purchased Services</u></b>			
	513 Contracted Carriers			2,895,966.33
	516 Student Transportation Services From the IU			8,125.31
	519 Student Transportation Services From Other Sources			10,798.70
	580 Travel			25.90
<b>Total Other Purchased Services</b>				<b>\$2,914,916.24</b>
<b>600</b>	<b><u>Supplies</u></b>			
	610 General Supplies			2,120.09
	630 Food			456.00
	650 Supplies & Fees – Technology Related			35,390.00
<b>Total Supplies</b>				<b>\$37,966.09</b>
<b>800</b>	<b><u>Other Objects</u></b>			
	810 Dues and Fees			114.28
<b>Total Other Objects</b>				<b>\$114.28</b>
<b>Total 2700 Student Transportation Services</b>				<b>\$3,077,284.48</b>

**General Fund (10)**

**2710 Supervision of Student Transportation Services**

Elementary                      Secondary                      Federal                      Total

<b>100</b>	<b><u>Personnel Services – Salaries</u></b>				
	100 Personnel Services – Salaries				65,948.21
<b>Total Personnel Services – Salaries</b>					<b>\$65,948.21</b>
<b>200</b>	<b><u>Personnel Services – Employee Benefits</u></b>				
	210 Group Insurance – Contracted Provider				88.20
	220 Social Security Contributions				4,854.56
	230 PSERS Retirement Contributions				23,253.30
	260 Workers' Compensation				633.83
	270 Group Insurance – Self-Insurance				19,330.22
	299 All Other Employee Benefits				1,567.25
<b>Total Personnel Services – Employee Benefits</b>					<b>\$49,727.36</b>
<b>400</b>	<b><u>Purchased Property Services</u></b>				
	430 Repairs and Maintenance Services				8,612.30
<b>Total Purchased Property Services</b>					<b>\$8,612.30</b>
<b>500</b>	<b><u>Other Purchased Services</u></b>				
	580 Travel				25.90
<b>Total Other Purchased Services</b>					<b>\$25.90</b>
<b>600</b>	<b><u>Supplies</u></b>				
	610 General Supplies				2,120.09
	630 Food				456.00
	650 Supplies & Fees – Technology Related				35,390.00
<b>Total Supplies</b>					<b>\$37,966.09</b>
<b>800</b>	<b><u>Other Objects</u></b>				
	810 Dues and Fees				114.28
<b>Total Other Objects</b>					<b>\$114.28</b>
<b>Total 2710 Supervision of Student Transportation Services</b>					<b>\$162,394.14</b>

**General Fund (10)**

**2711 Supervision of Student Transportation Services – Head of Component**

Elementary                      Secondary                      Federal                      Total

<b>100</b>	<b><u>Personnel Services – Salaries</u></b>			
	100 Personnel Services – Salaries			65,948.21
<b>Total Personnel Services – Salaries</b>				<b>\$65,948.21</b>
<b>200</b>	<b><u>Personnel Services – Employee Benefits</u></b>			
	210 Group Insurance – Contracted Provider			88.20
	220 Social Security Contributions			4,854.56
	230 PSERS Retirement Contributions			23,253.30
	260 Workers' Compensation			633.83
	270 Group Insurance – Self-Insurance			19,330.22
	299 All Other Employee Benefits			1,567.25
<b>Total Personnel Services – Employee Benefits</b>				<b>\$49,727.36</b>
<b>400</b>	<b><u>Purchased Property Services</u></b>			
	430 Repairs and Maintenance Services			8,612.30
<b>Total Purchased Property Services</b>				<b>\$8,612.30</b>
<b>500</b>	<b><u>Other Purchased Services</u></b>			
	580 Travel			25.90
<b>Total Other Purchased Services</b>				<b>\$25.90</b>
<b>600</b>	<b><u>Supplies</u></b>			
	610 General Supplies			2,120.09
	630 Food			456.00
	650 Supplies & Fees – Technology Related			35,390.00
<b>Total Supplies</b>				<b>\$37,966.09</b>
<b>800</b>	<b><u>Other Objects</u></b>			
	810 Dues and Fees			114.28
<b>Total Other Objects</b>				<b>\$114.28</b>
<b>Total 2711 Supervision of Student Transportation Services – Head of Component</b>				<b>\$162,394.14</b>

LEA : 113361303 Cocalico SD

Printed 10/31/2023 11:37:03 AM

General Fund (10)

2720 Vehicle Operation Services

Elementary

Secondary

Federal

Total

500 Other Purchased Services

513 Contracted Carriers

2,734,750.00

519 Student Transportation Services From Other Sources

10,798.70

**Total Other Purchased Services**

**\$2,745,548.70**

**Total 2720 Vehicle Operation Services**

**\$2,745,548.70**

LEA : 113361303 Cocalico SD

Printed 10/31/2023 11:37:03 AM

General Fund (10)

	<u>Elementary</u>	<u>Secondary</u>	<u>Federal</u>	<u>Total</u>
<b>2750 Nonpublic Transportation</b>				
<b>500 <u>Other Purchased Services</u></b>				
513 Contracted Carriers				161,216.33
<b>Total Other Purchased Services</b>				<b>\$161,216.33</b>
<b>Total 2750 Nonpublic Transportation</b>				<b>\$161,216.33</b>

General Fund (10)

2790 Other Student Transportation Services

Elementary

Secondary

Federal

Total

500 Other Purchased Services

516 Student Transportation Services From the IU

8,125.31

**Total Other Purchased Services**

**\$8,125.31**

**Total 2790 Other Student Transportation Services**

**\$8,125.31**



**General Fund (10)**

**2800 Support Services – Central**

Elementary                      Secondary                      Federal                      Total

<b>100</b>	<b><u>Personnel Services – Salaries</u></b>				
	100 Personnel Services – Salaries				696,555.92
<b>Total Personnel Services – Salaries</b>					<b>\$696,555.92</b>
<b>200</b>	<b><u>Personnel Services – Employee Benefits</u></b>				
	210 Group Insurance – Contracted Provider				1,180.20
	220 Social Security Contributions				51,955.32
	230 PSERS Retirement Contributions				227,275.45
	240 Tuition Reimbursement				24,208.47
	260 Workers' Compensation				6,694.60
	270 Group Insurance – Self-Insurance				173,972.02
	291 Other Retirement Plans				4,424.64
	299 All Other Employee Benefits				10,677.82
<b>Total Personnel Services – Employee Benefits</b>					<b>\$500,388.52</b>
<b>300</b>	<b><u>Purchased Professional and Technical Services</u></b>				
	322 Professional Educational Services – lus				21,634.00
	330 Other Professional Services				5,388.55
	340 Technical Services				92,958.38
	360 Employee Training and Development Services				17,260.94
	390 Other Purchased Professional and Technical Services				738.00
<b>Total Purchased Professional and Technical Services</b>					<b>\$137,979.87</b>
<b>400</b>	<b><u>Purchased Property Services</u></b>				
	430 Repairs and Maintenance Services				1,934.62
<b>Total Purchased Property Services</b>					<b>\$1,934.62</b>
<b>500</b>	<b><u>Other Purchased Services</u></b>				
	530 Communications				9,008.04
	549 Other Advertising/Public Relations				2,755.96
	550 Printing and Binding				43,828.78
	580 Travel				17,781.78
<b>Total Other Purchased Services</b>					<b>\$73,374.56</b>
<b>600</b>	<b><u>Supplies</u></b>				
	610 General Supplies				5,318.19
	630 Food				107.36
	650 Supplies & Fees – Technology Related				166,928.59
<b>Total Supplies</b>					<b>\$172,354.14</b>
<b>700</b>	<b><u>Property</u></b>				
	752 Capital Equipment – Original and Additional				2,029.00
	766 Capitalized Technology Equipment – Replacement				5,196.00
<b>Total Property</b>					<b>\$7,225.00</b>
<b>800</b>	<b><u>Other Objects</u></b>				
	810 Dues and Fees				685.07
<b>Total Other Objects</b>					<b>\$685.07</b>
<b>Total 2800 Support Services – Central</b>					<b>\$1,590,497.70</b>



LEA : 113361303 Cocalico SD

Printed 10/31/2023 11:37:03 AM

**General Fund (10)**

**2820 Information Services**

Elementary

Secondary

Federal

Total

**500 Other Purchased Services**

530 Communications

5,455.90

550 Printing and Binding

43,828.78

**Total Other Purchased Services**

**\$49,284.68**

**Total 2820 Information Services**

**\$49,284.68**

LEA : 113361303 Cocalico SD

Printed 10/31/2023 11:37:03 AM

General Fund (10)

2823 Public Information Services

Elementary

Secondary

Federal

Total

500 Other Purchased Services

530 Communications

5,455.90

550 Printing and Binding

43,828.78

**Total Other Purchased Services**

**\$49,284.68**

**Total 2823 Public Information Services**

**\$49,284.68**

**General Fund (10)**

**2830 Staff Services**

	<u>Elementary</u>	<u>Secondary</u>	<u>Federal</u>	<u>Total</u>
<b>100 Personnel Services – Salaries</b>				
100 Personnel Services – Salaries				216,082.39
<b>Total Personnel Services – Salaries</b>				<b>\$216,082.39</b>
<b>200 Personnel Services – Employee Benefits</b>				
210 Group Insurance – Contracted Provider				428.40
220 Social Security Contributions				16,304.29
230 PSERS Retirement Contributions				63,894.79
240 Tuition Reimbursement				24,208.47
260 Workers' Compensation				2,076.77
270 Group Insurance – Self-Insurance				38,660.45
291 Other Retirement Plans				2,232.06
299 All Other Employee Benefits				3,134.51
<b>Total Personnel Services – Employee Benefits</b>				<b>\$150,939.74</b>
<b>300 Purchased Professional and Technical Services</b>				
330 Other Professional Services				5,388.55
360 Employee Training and Development Services				17,260.94
390 Other Purchased Professional and Technical Services				738.00
<b>Total Purchased Professional and Technical Services</b>				<b>\$23,387.49</b>
<b>500 Other Purchased Services</b>				
549 Other Advertising/Public Relations				2,755.96
580 Travel				16,549.81
<b>Total Other Purchased Services</b>				<b>\$19,305.77</b>
<b>600 Supplies</b>				
610 General Supplies				1,529.53
630 Food				107.36
650 Supplies & Fees – Technology Related				11,932.49
<b>Total Supplies</b>				<b>\$13,569.38</b>
<b>800 Other Objects</b>				
810 Dues and Fees				570.79
<b>Total Other Objects</b>				<b>\$570.79</b>
<b>Total 2830 Staff Services</b>				<b>\$423,855.56</b>

**General Fund (10)**

**2831 Supervision of Staff Services**

Elementary                      Secondary                      Federal                      Total

<b>100</b>	<b><u>Personnel Services – Salaries</u></b>			
	100 Personnel Services – Salaries			181,210.72
<b>Total Personnel Services – Salaries</b>				<b>\$181,210.72</b>
<b>200</b>	<b><u>Personnel Services – Employee Benefits</u></b>			
	210 Group Insurance – Contracted Provider			428.40
	220 Social Security Contributions			13,699.24
	230 PSERS Retirement Contributions			63,894.79
	260 Workers' Compensation			1,741.62
	270 Group Insurance – Self-Insurance			38,660.45
	291 Other Retirement Plans			2,232.06
	299 All Other Employee Benefits			3,134.51
<b>Total Personnel Services – Employee Benefits</b>				<b>\$123,791.07</b>
<b>300</b>	<b><u>Purchased Professional and Technical Services</u></b>			
	390 Other Purchased Professional and Technical Services			738.00
<b>Total Purchased Professional and Technical Services</b>				<b>\$738.00</b>
<b>500</b>	<b><u>Other Purchased Services</u></b>			
	549 Other Advertising/Public Relations			2,755.96
	580 Travel			114.21
<b>Total Other Purchased Services</b>				<b>\$2,870.17</b>
<b>600</b>	<b><u>Supplies</u></b>			
	610 General Supplies			1,529.53
	630 Food			107.36
	650 Supplies & Fees – Technology Related			11,932.49
<b>Total Supplies</b>				<b>\$13,569.38</b>
<b>800</b>	<b><u>Other Objects</u></b>			
	810 Dues and Fees			570.79
<b>Total Other Objects</b>				<b>\$570.79</b>
<b>Total 2831 Supervision of Staff Services</b>				<b>\$322,750.13</b>

General Fund (10)

	<u>Elementary</u>	<u>Secondary</u>	<u>Federal</u>	<u>Total</u>
<b>2834 Staff Development Services – Non-Instructional, Certified Staff Only</b>				
<b>200 Personnel Services – Employee Benefits</b>				
240 Tuition Reimbursement				24,208.47
<b>Total Personnel Services – Employee Benefits</b>				<b>\$24,208.47</b>
<b>300 Purchased Professional and Technical Services</b>				
360 Employee Training and Development Services				12,951.73
<b>Total Purchased Professional and Technical Services</b>				<b>\$12,951.73</b>
<b>500 Other Purchased Services</b>				
580 Travel				12,441.41
<b>Total Other Purchased Services</b>				<b>\$12,441.41</b>
<b>Total 2834 Staff Development Services – Non-Instructional, Certified Staff Only</b>				<b>\$49,601.61</b>

General Fund (10)

2835 Health Services

Elementary

Secondary

Federal

Total

300 Purchased Professional and Technical Services

330 Other Professional Services

5,388.55

**Total Purchased Professional and Technical Services**

**\$5,388.55**

**Total 2835 Health Services**

**\$5,388.55**



General Fund (10)

2836 Staff Development Services – Non-Instructional, Non-Certified Staff Only

Elementary

Secondary

Federal

Total

100 Personnel Services – Salaries

100 Personnel Services – Salaries

34,871.67

**Total Personnel Services – Salaries**

**\$34,871.67**

200 Personnel Services – Employee Benefits

220 Social Security Contributions

2,605.05

260 Workers' Compensation

335.15

**Total Personnel Services – Employee Benefits**

**\$2,940.20**

300 Purchased Professional and Technical Services

360 Employee Training and Development Services

4,309.21

**Total Purchased Professional and Technical Services**

**\$4,309.21**

500 Other Purchased Services

580 Travel

3,994.19

**Total Other Purchased Services**

**\$3,994.19**

**Total 2836 Staff Development Services – Non-Instructional, Non-Certified Staff Only**

**\$46,115.27**

LEA : 113361303 Cocalico SD

Printed 10/31/2023 11:37:03 AM

General Fund (10)

2900 Other Support Services

Elementary

Secondary

Federal

Total

500 Other Purchased Services

595 IU Payments By Withholding

24,183.44

**Total Other Purchased Services**

**\$24,183.44**

**Total 2900 Other Support Services**

**\$24,183.44**

General Fund (10)

2910 Support Services Not Listed Elsewhere In the 2000 Series

Elementary

Secondary

Federal

Total

500 Other Purchased Services

595 IU Payments By Withholding

24,183.44

**Total Other Purchased Services**

**\$24,183.44**

**Total 2910 Support Services Not Listed Elsewhere In the 2000 Series**

**\$24,183.44**

**General Fund (10)**

**3000 Operation of Non-Instructional Services**

**Total**

**100 Personnel Services – Salaries**

100 Personnel Services – Salaries 630,249.64

**Total Personnel Services – Salaries \$630,249.64**

**200 Personnel Services – Employee Benefits**

210 Group Insurance – Contracted Provider 126.00

220 Social Security Contributions 47,614.12

230 PSERS Retirement Contributions 209,241.19

260 Workers’ Compensation 6,057.34

270 Group Insurance – Self-Insurance 19,330.22

299 All Other Employee Benefits 4,408.80

**Total Personnel Services – Employee Benefits \$286,777.67**

**300 Purchased Professional and Technical Services**

329 Professional Educational Services – Other 29,434.01

330 Other Professional Services 106,878.49

390 Other Purchased Professional and Technical Services 4,711.40

**Total Purchased Professional and Technical Services \$141,023.90**

**400 Purchased Property Services**

430 Repairs and Maintenance Services 9,080.37

**Total Purchased Property Services \$9,080.37**

**500 Other Purchased Services**

510 Student Transportation Services 102,117.47

520 Insurance – General 28,760.00

530 Communications 3,721.55

550 Printing and Binding 691.75

580 Travel 12,510.37

**Total Other Purchased Services \$147,801.14**

**600 Supplies**

610 General Supplies 65,940.10

630 Food 1,205.65

650 Supplies & Fees – Technology Related 5,300.00

**Total Supplies \$72,445.75**

**700 Property**

752 Capital Equipment – Original and Additional 12,829.00

**Total Property \$12,829.00**

**800 Other Objects**

810 Dues and Fees 4,631.89

890 Miscellaneous Expenditures 13,798.00

**Total Other Objects \$18,429.89**

**Total 3000 Operation of Non-Instructional Services \$1,318,637.36**



**General Fund (10)**

**3300 Community Services**

**100 Personnel Services – Salaries**

	<u>Elementary</u>	<u>Secondary</u>	<u>Federal</u>	<u>Total</u>
100 Personnel Services – Salaries			1,550.00	15,731.75
<b>Total Personnel Services – Salaries</b>			<b>\$1,550.00</b>	<b>\$15,731.75</b>

**200 Personnel Services – Employee Benefits**

220 Social Security Contributions			115.84	1,168.36
230 PSERS Retirement Contributions			273.27	5,547.11
260 Workers' Compensation			14.90	151.20
<b>Total Personnel Services – Employee Benefits</b>			<b>\$404.01</b>	<b>\$6,866.67</b>

**300 Purchased Professional and Technical Services**

390 Other Purchased Professional and Technical Services				250.00
<b>Total Purchased Professional and Technical Services</b>				<b>\$250.00</b>

**500 Other Purchased Services**

530 Communications				2,538.11
<b>Total Other Purchased Services</b>				<b>\$2,538.11</b>

**600 Supplies**

610 General Supplies			1,151.42	1,266.74
630 Food			675.00	675.00
<b>Total Supplies</b>			<b>\$1,826.42</b>	<b>\$1,941.74</b>

**Total 3300 Community Services**

			<b>\$3,780.43</b>	<b>\$27,328.27</b>
--	--	--	-------------------	--------------------

**General Fund (10)**

**5000 Other Expenditures and Financing Uses**

**Total**

**800 Other Objects**

830 Interest	14,322.93
880 Refunds of Prior Years' Receipts	9,520.97

<b>Total Other Objects</b>	<b>\$23,843.90</b>
----------------------------	--------------------

**900 Other Uses of Funds**

910 Redemption of Principal	462,936.01
932 Capital Reserve Fund Transfers Applicable To Fund 32	3,346,341.00
939 Other Fund Transfers	1,655,658.33

<b>Total Other Uses of Funds</b>	<b>\$5,464,935.34</b>
----------------------------------	-----------------------

<b>Total 5000 Other Expenditures and Financing Uses</b>	<b>\$5,488,779.24</b>
---	-----------------------

LEA : 113361303 Cocalico SD

Printed 10/31/2023 11:37:24 AM

General Fund (10)

5100 Debt Service / Other Expenditures and Financing Uses	<u>Elementary</u>	<u>Secondary</u>	<u>Federal</u>	<u>Total</u>
<b>800 Other Objects</b>				
830 Interest				14,322.93
880 Refunds of Prior Years' Receipts				9,520.97
<b>Total Other Objects</b>				<b>\$23,843.90</b>
<b>900 Other Uses of Funds</b>				
910 Redemption of Principal				462,936.01
<b>Total Other Uses of Funds</b>				<b>\$462,936.01</b>
<b>Total 5100 Debt Service / Other Expenditures and Financing Uses</b>				<b>\$486,779.91</b>



LEA : 113361303 Cocalico SD

Printed 10/31/2023 11:37:24 AM

General Fund (10)

	<u>Elementary</u>	<u>Secondary</u>	<u>Federal</u>	<u>Total</u>
5130 Refund of Prior Year Revenues / Receipts				
800 <u>Other Objects</u>				
880 Refunds of Prior Years' Receipts				9,520.97
<b>Total Other Objects</b>				<b>\$9,520.97</b>
<b>Total 5130 Refund of Prior Year Revenues / Receipts</b>				<b>\$9,520.97</b>

LEA : 113361303 Cocalico SD

Printed 10/31/2023 11:37:24 AM

General Fund (10)

5140 Leases and Other Right-to-Use Arrangements

Elementary

Secondary

Federal

Total

800 Other Objects

830 Interest

14,322.93

**Total Other Objects**

**\$14,322.93**

900 Other Uses of Funds

910 Redemption of Principal

462,936.01

**Total Other Uses of Funds**

**\$462,936.01**

**Total 5140 Leases and Other Right-to-Use Arrangements**

**\$477,258.94**

LEA : 113361303 Cocalico SD

Printed 10/31/2023 11:37:24 AM

General Fund (10)

5200 Interfund Transfers – Out

Elementary

Secondary

Federal

Total

900 Other Uses of Funds

932 Capital Reserve Fund Transfers Applicable To Fund 32

3,346,341.00

939 Other Fund Transfers

1,655,658.33

**Total Other Uses of Funds**

**\$5,001,999.33**

**Total 5200 Interfund Transfers – Out**

**\$5,001,999.33**

LEA : 113361303 Cocalico SD

Printed 10/31/2023 11:37:24 AM

General Fund (10)

5230 Capital Projects Fund Transfers

Elementary

Secondary

Federal

Total

900 Other Uses of Funds

932 Capital Reserve Fund Transfers Applicable To Fund 32

3,346,341.00

**Total Other Uses of Funds**

**\$3,346,341.00**

**Total 5230 Capital Projects Fund Transfers**

**\$3,346,341.00**

LEA : 113361303 Cocalico SD

Printed 10/31/2023 11:37:24 AM

General Fund (10)

5240 Debt Service Fund Transfers

Elementary

Secondary

Federal

Total

900 Other Uses of Funds

939 Other Fund Transfers

1,655,658.33

**Total Other Uses of Funds**

**\$1,655,658.33**

**Total 5240 Debt Service Fund Transfers**

**\$1,655,658.33**

LEA : 113361303 Cocalico SD

Printed 10/31/2023 11:37:18 AM

**Student Sponsored Activity Fund (21)**

**3000 Operation of Non-Instructional Services**

**Total**

**600 Supplies**

610 General Supplies

113,963.00

**Total Supplies**

**\$113,963.00**

**Total 3000 Operation of Non-Instructional Services**

**\$113,963.00**

LEA : 113361303 Cocalico SD

Printed 10/31/2023 11:37:18 AM

Student Sponsored Activity Fund (21)

3200 Student Activities

Elementary

Secondary

Federal

Total

600 Supplies

610 General Supplies

113,963.00

<b>Total Supplies</b>				<b>\$113,963.00</b>
<b>Total 3200 Student Activities</b>				<b>\$113,963.00</b>

LEA : 113361303 Cocalico SD

Printed 10/31/2023 11:37:07 AM

Capital Reserve Fund - § 1431 (32)

2000 Support Services

Total

300 Purchased Professional and Technical Services

340 Technical Services 9,680.00

**Total Purchased Professional and Technical Services \$9,680.00**

400 Purchased Property Services

430 Repairs and Maintenance Services 36,368.25

**Total Purchased Property Services \$36,368.25**

500 Other Purchased Services

549 Other Advertising/Public Relations 2,137.67

**Total Other Purchased Services \$2,137.67**

600 Supplies

610 General Supplies 42,608.38

650 Supplies & Fees – Technology Related 1,966.60

**Total Supplies \$44,574.98**

700 Property

752 Capital Equipment – Original and Additional 100,307.40

756 Capitalized Technology Equipment – Original 6,282.70

762 Capitalized Equipment - Replacement 143,705.34

**Total Property \$250,295.44**

800 Other Objects

890 Miscellaneous Expenditures 1,105.86

**Total Other Objects \$1,105.86**

**Total 2000 Support Services \$344,162.20**



LEA : 113361303 Cocalico SD

Printed 10/31/2023 11:37:07 AM

Capital Reserve Fund - § 1431 (32)

2500 Support Services – Business

Elementary

Secondary

Federal

Total

800 Other Objects

890 Miscellaneous Expenditures

1,105.86

**Total Other Objects**

**\$1,105.86**

**Total 2500 Support Services – Business**

**\$1,105.86**

LEA : 113361303 Cocalico SD

Printed 10/31/2023 11:37:07 AM

Capital Reserve Fund - § 1431 (32)

2510 Fiscal Services

Elementary

Secondary

Federal

Total

800 Other Objects

890 Miscellaneous Expenditures

1,105.86

**Total Other Objects**

**\$1,105.86**

**Total 2510 Fiscal Services**

**\$1,105.86**

LEA : 113361303 Cocalico SD

Printed 10/31/2023 11:37:07 AM

Capital Reserve Fund - § 1431 (32)

2515 Financial Accounting Services

Elementary

Secondary

Federal

Total

800 Other Objects

890 Miscellaneous Expenditures

1,105.86

**Total Other Objects**

**\$1,105.86**

**Total 2515 Financial Accounting Services**

**\$1,105.86**

LEA : 113361303 Cocalico SD

Printed 10/31/2023 11:37:07 AM

**Capital Reserve Fund - § 1431 (32)**

	<u>Elementary</u>	<u>Secondary</u>	<u>Federal</u>	<u>Total</u>
<b>2600 Operation and Maintenance of Plant Services</b>				
<b>400 <u>Purchased Property Services</u></b>				
430 Repairs and Maintenance Services				36,368.25
<b>Total Purchased Property Services</b>				<b>\$36,368.25</b>
<b>500 <u>Other Purchased Services</u></b>				
549 Other Advertising/Public Relations				2,137.67
<b>Total Other Purchased Services</b>				<b>\$2,137.67</b>
<b>600 <u>Supplies</u></b>				
610 General Supplies	213.05	42,395.33		42,608.38
<b>Total Supplies</b>	<b>\$213.05</b>	<b>\$42,395.33</b>		<b>\$42,608.38</b>
<b>700 <u>Property</u></b>				
752 Capital Equipment – Original and Additional				100,307.40
762 Capitalized Equipment - Replacement				143,705.34
<b>Total Property</b>				<b>\$244,012.74</b>
<b>Total 2600 Operation and Maintenance of Plant Services</b>	<b>\$213.05</b>	<b>\$42,395.33</b>		<b>\$325,127.04</b>

LEA : 113361303 Cocalico SD

Printed 10/31/2023 11:37:07 AM

Capital Reserve Fund - § 1431 (32)

	<u>Elementary</u>	<u>Secondary</u>	<u>Federal</u>	<u>Total</u>
<b>2620 Operation of Buildings Services</b>				
<b>400 <u>Purchased Property Services</u></b>				
430 Repairs and Maintenance Services				36,368.25
<b>Total Purchased Property Services</b>				<b>\$36,368.25</b>
<b>500 <u>Other Purchased Services</u></b>				
549 Other Advertising/Public Relations				2,137.67
<b>Total Other Purchased Services</b>				<b>\$2,137.67</b>
<b>600 <u>Supplies</u></b>				
610 General Supplies	213.05	42,395.33		42,608.38
<b>Total Supplies</b>	<b>\$213.05</b>	<b>\$42,395.33</b>		<b>\$42,608.38</b>
<b>700 <u>Property</u></b>				
752 Capital Equipment – Original and Additional				100,307.40
762 Capitalized Equipment - Replacement				143,705.34
<b>Total Property</b>				<b>\$244,012.74</b>
<b>Total 2620 Operation of Buildings Services</b>	<b>\$213.05</b>	<b>\$42,395.33</b>		<b>\$325,127.04</b>

LEA : 113361303 Cocalico SD

Printed 10/31/2023 11:37:07 AM

Capital Reserve Fund - § 1431 (32)

2800 Support Services – Central

Elementary

Secondary

Federal

Total

300 Purchased Professional and Technical Services

340 Technical Services

9,680.00

**Total Purchased Professional and Technical Services**

**\$9,680.00**

600 Supplies

650 Supplies & Fees – Technology Related

1,966.60

**Total Supplies**

**\$1,966.60**

700 Property

756 Capitalized Technology Equipment – Original

6,282.70

**Total Property**

**\$6,282.70**

**Total 2800 Support Services – Central**

**\$17,929.30**

LEA : 113361303 Cocalico SD

Printed 10/31/2023 11:37:07 AM

Capital Reserve Fund - § 1431 (32)

2810 Planning, Research, Development and Evaluation Services

Elementary

Secondary

Federal

Total

300 Purchased Professional and Technical Services

340 Technical Services

9,680.00

**Total Purchased Professional and Technical Services**

**\$9,680.00**

600 Supplies

650 Supplies & Fees – Technology Related

1,966.60

**Total Supplies**

**\$1,966.60**

700 Property

756 Capitalized Technology Equipment – Original

6,282.70

**Total Property**

**\$6,282.70**

**Total 2810 Planning, Research, Development and Evaluation Services**

**\$17,929.30**

LEA : 113361303 Cocalico SD

Printed 10/31/2023 11:37:20 AM

**Capital Reserve Fund - § 1431 (32)**

**4000 Facilities Acquisition, Construction and Improvement Services**

**Total**

**300 Purchased Professional and Technical Services**

330 Other Professional Services

848,132.91

**Total Purchased Professional and Technical Services**

**\$848,132.91**

**400 Purchased Property Services**

450 Construction Services

2,450,612.63

490 Other Purchased Property Services

9,575.00

**Total Purchased Property Services**

**\$2,460,187.63**

**Total 4000 Facilities Acquisition, Construction and Improvement Services**

**\$3,308,320.54**



LEA : 113361303 Cocalico SD

Printed 10/31/2023 11:37:20 AM

Capital Reserve Fund - § 1431 (32)

4400 Architecture and Engineering Services / Educational Specifications – Improvements

Elementary

Secondary

Federal

Total

300 Purchased Professional and Technical Services

330 Other Professional Services

848,132.91

**Total Purchased Professional and Technical Services**

**\$848,132.91**

**Total 4400 Architecture and Engineering Services / Educational Specifications – Improvements**

**\$848,132.91**

LEA : 113361303 Cocalico SD

Printed 10/31/2023 11:37:20 AM

Capital Reserve Fund - § 1431 (32)

4600 Existing Building Improvement Services

Elementary

Secondary

Federal

Total

400 Purchased Property Services

450 Construction Services

2,450,612.63

490 Other Purchased Property Services

9,575.00

**Total Purchased Property Services**

**\$2,460,187.63**

**Total 4600 Existing Building Improvement Services**

**\$2,460,187.63**

LEA : 113361303 Cocalico SD

Printed 10/31/2023 11:37:09 AM

**Other Capital Projects Fund (39)**

**2000 Support Services**

**600 Supplies**

610 General Supplies

54,250.65

650 Supplies & Fees – Technology Related

59,926.11

**Total Supplies** **\$114,176.76**

**700 Property**

752 Capital Equipment – Original and Additional

258,208.82

762 Capitalized Equipment - Replacement

663,399.00

**Total Property** **\$921,607.82**

**Total 2000 Support Services** **\$1,035,784.58**

LEA : 113361303 Cocalico SD

Printed 10/31/2023 11:37:09 AM

Other Capital Projects Fund (39)

2600 Operation and Maintenance of Plant Services

Elementary

Secondary

Federal

Total

600 Supplies

610 General Supplies

271.25

53,979.40

54,250.65

**Total Supplies**

**\$271.25**

**\$53,979.40**

**\$54,250.65**

700 Property

752 Capital Equipment – Original and Additional

258,208.82

762 Capitalized Equipment - Replacement

663,399.00

**Total Property**

**\$921,607.82**

**Total 2600 Operation and Maintenance of Plant Services**

**\$271.25**

**\$53,979.40**

**\$975,858.47**

LEA : 113361303 Cocalico SD

Printed 10/31/2023 11:37:09 AM

**Other Capital Projects Fund (39)**

	<u>Elementary</u>	<u>Secondary</u>	<u>Federal</u>	<u>Total</u>
<b>2620 Operation of Buildings Services</b>				
<b>600 Supplies</b>				
610 General Supplies	271.25	53,979.40		54,250.65
<b>Total Supplies</b>	<b>\$271.25</b>	<b>\$53,979.40</b>		<b>\$54,250.65</b>
<b>700 Property</b>				
752 Capital Equipment – Original and Additional				258,208.82
762 Capitalized Equipment - Replacement				663,399.00
<b>Total Property</b>				<b>\$921,607.82</b>
<b>Total 2620 Operation of Buildings Services</b>	<b>\$271.25</b>	<b>\$53,979.40</b>		<b>\$975,858.47</b>

LEA : 113361303 Cocalico SD

Printed 10/31/2023 11:37:09 AM

**Other Capital Projects Fund (39)**

**2800 Support Services – Central**

Elementary

Secondary

Federal

Total

**600 Supplies**

650 Supplies & Fees – Technology Related

59,926.11

**Total Supplies**

**\$59,926.11**

**Total 2800 Support Services – Central**

**\$59,926.11**

Other Capital Projects Fund (39)

2810 Planning, Research, Development and Evaluation Services

Elementary

Secondary

Federal

Total

600 Supplies

650 Supplies & Fees – Technology Related

59,926.11

<b>Total Supplies</b>				<b>\$59,926.11</b>
<b>Total 2810 Planning, Research, Development and Evaluation Services</b>				<b>\$59,926.11</b>

**Other Capital Projects Fund (39)**

**4000 Facilities Acquisition, Construction and Improvement Services**

**Total**

**300 Purchased Professional and Technical Services**

330 Other Professional Services

174,336.27

**Total Purchased Professional and Technical Services**

**\$174,336.27**

**400 Purchased Property Services**

450 Construction Services

7,997,097.01

490 Other Purchased Property Services

605.00

**Total Purchased Property Services**

**\$7,997,702.01**

**Total 4000 Facilities Acquisition, Construction and Improvement Services**

**\$8,172,038.28**



LEA : 113361303 Cocalico SD

Printed 10/31/2023 11:37:22 AM

Other Capital Projects Fund (39)

4400 Architecture and Engineering Services / Educational Specifications – Improvements

Elementary

Secondary

Federal

Total

300 Purchased Professional and Technical Services

330 Other Professional Services

174,336.27

**Total Purchased Professional and Technical Services**

**\$174,336.27**

**Total 4400 Architecture and Engineering Services / Educational Specifications – Improvements**

**\$174,336.27**

LEA : 113361303 Cocalico SD

Printed 10/31/2023 11:37:22 AM

**Other Capital Projects Fund (39)**

**4600 Existing Building Improvement Services**

Elementary

Secondary

Federal

Total

**400 Purchased Property Services**

450 Construction Services

7,997,097.01

490 Other Purchased Property Services

605.00

**Total Purchased Property Services**

**\$7,997,702.01**

**Total 4600 Existing Building Improvement Services**

**\$7,997,702.01**

LEA : 113361303 Cocalico SD

Printed 10/31/2023 11:37:13 AM

**Debt Service Fund (40)**

**2000 Support Services**

**800 Other Objects**

890 Miscellaneous Expenditures

**Total Other Objects**

**Total 2000 Support Services**

Total

500.00

**\$500.00**

**\$500.00**

LEA : 113361303 Cocalico SD

Printed 10/31/2023 11:37:13 AM

Debt Service Fund (40)

2500 Support Services – Business

Elementary

Secondary

Federal

Total

800 Other Objects

890 Miscellaneous Expenditures

500.00

**Total Other Objects**

**\$500.00**

**Total 2500 Support Services – Business**

**\$500.00**

LEA : 113361303 Cocalico SD

Printed 10/31/2023 11:37:13 AM

Debt Service Fund (40)

2510 Fiscal Services

Elementary

Secondary

Federal

Total

800 Other Objects

890 Miscellaneous Expenditures

500.00

**Total Other Objects**

**\$500.00**

**Total 2510 Fiscal Services**

**\$500.00**

LEA : 113361303 Cocalico SD

Printed 10/31/2023 11:37:13 AM

Debt Service Fund (40)

2515 Financial Accounting Services

Elementary

Secondary

Federal

Total

800 Other Objects

890 Miscellaneous Expenditures

500.00

**Total Other Objects**

**\$500.00**

**Total 2515 Financial Accounting Services**

**\$500.00**

**Debt Service Fund (40)**

**5000 Other Expenditures and Financing Uses**

**Total**

**800 Other Objects**

830 Interest 710,158.33

**Total Other Objects \$710,158.33**

**900 Other Uses of Funds**

910 Redemption of Principal 945,000.00

**Total Other Uses of Funds \$945,000.00**

**Total 5000 Other Expenditures and Financing Uses \$1,655,158.33**

LEA : 113361303 Cocalico SD

Printed 10/31/2023 11:37:26 AM

Debt Service Fund (40)

5100 Debt Service / Other Expenditures and Financing Uses	<u>Elementary</u>	<u>Secondary</u>	<u>Federal</u>	<u>Total</u>
800 <u>Other Objects</u>				
830 Interest				710,158.33
<b>Total Other Objects</b>				<b>\$710,158.33</b>
900 <u>Other Uses of Funds</u>				
910 Redemption of Principal				945,000.00
<b>Total Other Uses of Funds</b>				<b>\$945,000.00</b>
<b>Total 5100 Debt Service / Other Expenditures and Financing Uses</b>				<b>\$1,655,158.33</b>



LEA : 113361303 Cocalico SD

Printed 10/31/2023 11:37:26 AM

Debt Service Fund (40)

	<u>Elementary</u>	<u>Secondary</u>	<u>Federal</u>	<u>Total</u>
<b>5110 Debt Service</b>				
<b>800 Other Objects</b>				
830 Interest				710,158.33
<b>Total Other Objects</b>				<b>\$710,158.33</b>
<b>900 Other Uses of Funds</b>				
910 Redemption of Principal				945,000.00
<b>Total Other Uses of Funds</b>				<b>\$945,000.00</b>
<b>Total 5110 Debt Service</b>				<b>\$1,655,158.33</b>

	<u>General Fund(10)</u>	<u>Student Sponsored Activity Fund(21)</u>	<u>Public Purpose Trust(27)</u>	<u>Other Compt Approved (28)</u>	<u>Athletic / Activity(29)</u>
<b>1000 Instruction</b>					
1100 Regular Programs - Elementary / Secondary	28,031,116.56				
1200 Special Programs - Elementary / Secondary	11,982,101.54				
1300 Vocational Education	1,143,576.47				
1400 Other Instructional Programs - Elementary / Secondary	371,952.93				
1500 Nonpublic School Programs	18,860.61				
1700 Higher Education Programs for Secondary Students	1,197.00				
<b>Total Instruction</b>	<b>\$41,548,805.11</b>				
<b>2000 Support Services</b>					
2100 Support Services - Students	2,560,819.32				
2200 Support Services - Instructional Staff	2,757,694.66				
2300 Support Services - Administration	4,338,383.29				
2400 Support Services - Pupil Health	752,527.33				
2500 Support Services - Business	800,691.03				
2600 Operation and Maintenance of Plant Services	4,121,679.58				
2700 Student Transportation Services	3,077,284.48				
2800 Support Services - Central	1,590,497.70				
2900 Other Support Services	24,183.44				
<b>Total Support Services</b>	<b>\$20,023,760.83</b>				
<b>3000 Operation of Non-Instructional Services</b>					
3200 Student Activities	1,291,309.09	113,963.00			
3300 Community Services	27,328.27				
<b>Total Operation of Non-Instructional Services</b>	<b>\$1,318,637.36</b>	<b>\$113,963.00</b>			
<b>4000 Facilities Acquisition, Construction and Improvement Services</b>					
4400 Architecture and Engineering Services / Educational Specifications - Improvements					
4600 Existing Building Improvement Services					
<b>Total Facilities Acquisition, Construction and Improvement Services</b>					
<b>5000 Other Expenditures and Financing Uses</b>					
5100 Debt Service / Other Expenditures and Financing Uses	486,779.91				
5200 Interfund Transfers - Out	5,001,999.33				
<b>Total Other Expenditures and Financing Uses</b>	<b>\$5,488,779.24</b>				
<b>TOTAL ACTUAL EXPENDITURES &amp; OTHER FINANCING USES</b>	<b>\$68,379,982.54</b>	<b>\$113,963.00</b>			

	<u>Capital Reserve (690.1850)(31)</u>	<u>Capital Reserve (1431)(32)</u>	<u>Other Capital Projects Fund(39)</u>	<u>Debt Service(40)</u>	<u>Permanent(90)</u>
<b>1000 Instruction</b>					
1100 Regular Programs - Elementary / Secondary					
1200 Special Programs - Elementary / Secondary					
1300 Vocational Education					
1400 Other Instructional Programs - Elementary / Secondary					
1500 Nonpublic School Programs					
1700 Higher Education Programs for Secondary Students					
<b>Total Instruction</b>					
<b>2000 Support Services</b>					
2100 Support Services - Students					
2200 Support Services - Instructional Staff					
2300 Support Services - Administration					
2400 Support Services - Pupil Health					
2500 Support Services - Business		1,105.86		500.00	
2600 Operation and Maintenance of Plant Services		325,127.04	975,858.47		
2700 Student Transportation Services					
2800 Support Services - Central		17,929.30	59,926.11		
2900 Other Support Services					
<b>Total Support Services</b>		<b>\$344,162.20</b>	<b>\$1,035,784.58</b>	<b>\$500.00</b>	
<b>3000 Operation of Non-Instructional Services</b>					
3200 Student Activities					
3300 Community Services					
<b>Total Operation of Non-Instructional Services</b>					
<b>4000 Facilities Acquisition, Construction and Improvement Services</b>					
4400 Architecture and Engineering Services / Educational Specifications - Improvements		848,132.91	174,336.27		
4600 Existing Building Improvement Services		2,460,187.63	7,997,702.01		
<b>Total Facilities Acquisition, Construction and Improvement Services</b>		<b>\$3,308,320.54</b>	<b>\$8,172,038.28</b>		
<b>5000 Other Expenditures and Financing Uses</b>					
5100 Debt Service / Other Expenditures and Financing Uses				1,655,158.33	
5200 Interfund Transfers - Out					
<b>Total Other Expenditures and Financing Uses</b>				<b>\$1,655,158.33</b>	
<b>TOTAL ACTUAL EXPENDITURES &amp; OTHER FINANCING USES</b>		<b>\$3,652,482.74</b>	<b>\$9,207,822.86</b>	<b>\$1,655,658.33</b>	

**Total**

<b>1000 <u>Instruction</u></b>	
1100 Regular Programs - Elementary / Secondary	28,031,116.56
1200 Special Programs - Elementary / Secondary	11,982,101.54
1300 Vocational Education	1,143,576.47
1400 Other Instructional Programs - Elementary / Secondary	371,952.93
1500 Nonpublic School Programs	18,860.61
1700 Higher Education Programs for Secondary Students	1,197.00
<b>Total Instruction</b>	<b>\$41,548,805.11</b>
<b>2000 <u>Support Services</u></b>	
2100 Support Services - Students	2,560,819.32
2200 Support Services - Instructional Staff	2,757,694.66
2300 Support Services - Administration	4,338,383.29
2400 Support Services - Pupil Health	752,527.33
2500 Support Services - Business	802,296.89
2600 Operation and Maintenance of Plant Services	5,422,665.09
2700 Student Transportation Services	3,077,284.48
2800 Support Services - Central	1,668,353.11
2900 Other Support Services	24,183.44
<b>Total Support Services</b>	<b>\$21,404,207.61</b>
<b>3000 <u>Operation of Non-Instructional Services</u></b>	
3200 Student Activities	1,405,272.09
3300 Community Services	27,328.27
<b>Total Operation of Non-Instructional Services</b>	<b>\$1,432,600.36</b>
<b>4000 <u>Facilities Acquisition, Construction and Improvement Services</u></b>	
4400 Architecture and Engineering Services / Educational Specifications - Improvements	1,022,469.18
4600 Existing Building Improvement Services	10,457,889.64
<b>Total Facilities Acquisition, Construction and Improvement Services</b>	<b>\$11,480,358.82</b>
<b>5000 <u>Other Expenditures and Financing Uses</u></b>	
5100 Debt Service / Other Expenditures and Financing Uses	2,141,938.24
5200 Interfund Transfers - Out	5,001,999.33
<b>Total Other Expenditures and Financing Uses</b>	<b>\$7,143,937.57</b>
<b>TOTAL ACTUAL EXPENDITURES &amp; OTHER FINANCING USES</b>	<b>\$83,009,909.47</b>

LEA : 113361303 Cocalico SD

Printed 10/31/2023 11:37:39 AM

**PSERS Salary Data (Salary Data should relate to the General Fund only)**

<b>Amount Description</b>	<b>Amount</b>
Total Salary Base for salaries subject to PSERS withholding	27,621,905.23
Total Federally Funded salaries subject to PSERS withholding	1,083,110.01
	<hr/>

**Title I Expenditure Data**

<b>Amount Description</b>	<b>Amount</b>
Expenditures Funded with Current Title I Funds	492,726.00
Expenditures Funded with Carry over Title I Funds	
<b>Total Title I Expenditure Data</b>	<hr/> <b>\$492,726.00</b> <hr/>

**Title IV Revenue Data**

<b>Amount Description</b>	<b>Amount</b>
Revenue from Title IV-A-1: Student Support and Academic Enrichment Grants	40,785.00
Revenue from Title IV-B: 21st Century Community Learning Centers	
	<hr/>

**Title V Revenue Data**

<b>Amount Description</b>	<b>Amount</b>
Revenue from Title V-B-2: Rural and Low-Income School Programs	
Revenue from Title V-B-1: Small Rural School Achievement (Directly from the Federal Govt)	
	<hr/>

1.	<b><u>Current Special Education Expenditures within Function 1000</u></b> See list of exclusions in the note below.	6,688,060.44
2.	<b><u>Current Special Education Expenditures within Function 2000</u></b> See list of exclusions in the note below.	2,522,132.60
2A.	<b><u>Current Special Education Expenditures within Sub-Function 2100</u></b> This data should also be included in line 2 above. See list of exclusions in the note below.	1,016,032.65
2B.	<b><u>Current Special Education Expenditures within Sub-Function 2200</u></b> This data should also be included in line 2 above. See list of exclusions in the note below.	461,498.87
2C.	<b><u>Current Special Education Expenditures within Sub-Function 2700</u></b> This data should also be included in line 2 above. See list of exclusions in the note below.	1,029,108.24
3.	<b><u>Current Special Education Expenditures within Sub-Function 3100</u></b> See list of exclusions in the note below.	
4.	<b><u>Current Special Education Expenditures within Sub-Function 3200</u></b> See list of exclusions in the note below.	

Note: The Current Special Education Expenditure amounts for each line should be calculated as follows:

- \* Include the total expenditures for special education costs from all governmental funds and the food service fund 51 for the function/sub-function requested
- \* Exclude data from sub-functions: 1243,1450,1500,1600,1807,2280,2450,2750,2990
- \* Exclude data from objects: 322,511,512,516,561,562,564,566,592,593,594,595,596,597,700,830,899

**Benefits for Staff Relative to Collective Bargaining Agreements**

	OBJECT	COVERED	NOT COVERED	TOTAL
<b>10 General Fund</b>				
	211 Medical Insurance			
	212 Dental Insurance			
	215 Eye Care Insurance			
	216 Prescription Insurance			
	271 Self-Insurance Medical Benefits	4,098,712.27	1,224,290.68	5,323,002.95
	272 Self-Insurance Dental Benefits	242,860.23	72,542.66	315,402.89
	275 Self-Insurance Eye Care Benefits	105,436.72	31,494.09	136,930.81
	276 Self-Insurance Prescription Benefits	1,161,023.27	346,799.16	1,507,822.43
	<b>FUND TOTAL</b>	<b>\$5,608,032.49</b>	<b>\$1,675,126.59</b>	<b>\$7,283,159.08</b>
<b>50 Enterprise Fund</b>				
	211 Medical Insurance			
	212 Dental Insurance			
	215 Eye Care Insurance			
	216 Prescription Insurance			
	271 Self-Insurance Medical Benefits		98,777.45	98,777.45
	272 Self-Insurance Dental Benefits		5,412.46	5,412.46
	275 Self-Insurance Eye Care Benefits		2,706.23	2,706.23
	276 Self-Insurance Prescription Benefits		28,415.43	28,415.43
	<b>FUND TOTAL</b>		<b>\$135,311.57</b>	<b>\$135,311.57</b>
<b>60 Internal Service Fund</b>	<b>No Self Insurance data to report</b>			
	211 Medical Insurance			
	212 Dental Insurance			
	215 Eye Care Insurance			
	216 Prescription Insurance			
	271 Self-Insurance Medical Benefits			
	272 Self-Insurance Dental Benefits			
	275 Self-Insurance Eye Care Benefits			
	276 Self-Insurance Prescription Benefits			
	<b>FUND TOTAL</b>			
<b>Total of All Funds</b>		<b>\$5,608,032.49</b>	<b>\$1,810,438.16</b>	<b>\$7,418,470.65</b>

LEA : 113361303 Cocalico SD

Printed 10/31/2023 11:37:44 AM

Function	Special Education (Prior Year)	Nonspecial Education (Prior Year)	Total (Prior Year)	Special Education (Current Year)	Nonspecial Education (Current Year)	Total (Current Year)
2120 Guidance Services		1,371,962.98	1,371,962.98		1,439,667.58	1,439,667.58
2140 Psychological Services	671,596.00		671,596.00	757,504.01		757,504.01
2150 Speech Pathology and Audiology Services						
2160 Social Work Services	256,072.45		256,072.45	259,935.45		259,935.45
2260 Instruction and Curriculum Development Services	381,157.76	299,021.28	680,179.04	399,164.34	452,650.73	851,815.07
2350 Legal and Accounting Services	14,111.50	21,730.75	35,842.25	12,930.00	11,035.67	23,965.67
2420 Medical Services		4,854.98	4,854.98		6,071.88	6,071.88
2440 Nursing Services		690,385.51	690,385.51		746,284.69	746,284.69
2700 Student Transportation Services	917,657.08	1,823,027.04	2,740,684.12	1,029,108.24	2,048,176.24	3,077,284.48
<b>Total</b>	<b>\$2,240,594.79</b>	<b>\$4,210,982.54</b>	<b>\$6,451,577.33</b>	<b>\$2,458,642.04</b>	<b>\$4,703,886.79</b>	<b>\$7,162,528.83</b>



(PRINCIPAL AMOUNTS ONLY)

**GOVERNMENTAL FUNDS/ ACTIVITIES**

	Short-Term Borrowing	General Obligation Bonds/Notes	Authority Building Obligations	Leases, Other Right to Use Arrangements	Extended Term Financing Agreements	Other Long Term Debt/Liabilities	OPEB, Comp Abs, Net Pension Liab	Total
1. Debt at Beginning of Fiscal Year		13,745,000.00		1,162,441.00			86,417,299.00	101,324,740.00
2. Additional Debt Incurred During Year				402,391.00			15,217,962.00	15,620,353.00
3. Retirements and Repayments		945,000.00		462,936.00			11,675,214.00	13,083,150.00
4. Debt at End of Fiscal Year		12,800,000.00		1,101,896.00			89,960,047.00	103,861,943.00
5. Accreted Interest at End Of Fiscal Year		3,777,500.00						3,777,500.00
6. Total Debt and Accreted Interest		16,577,500.00		1,101,896.00			89,960,047.00	107,639,443.00
7. Current Portion P&I - Due within 1 year		1,655,000.00		463,036.00			474,400.00	2,592,436.00
8. Interest Paid during current fiscal year		710,158.33						710,158.33

(PRINCIPAL AMOUNTS ONLY)

**PROPRIETARY FUNDS**

	Short-Term Borrowing	General Obligation Bonds/Notes	Authority Building Obligations	Leases, Other Right to Use Arrangements	Extended Term Financing Agreements	Other Long Term Debt/Liabilities	OPEB, Comp Abs, Net Pension Liab	Total
1. Debt at Beginning of Fiscal Year							1,749,431.00	1,749,431.00
2. Additional Debt Incurred During Year							307,529.00	307,529.00
3. Retirements and Repayments							236,518.00	236,518.00
4. Debt at End of Fiscal Year							1,820,442.00	1,820,442.00
5. Accreted Interest at End Of Fiscal Year								
6. Total Debt and Accreted Interest							1,820,442.00	1,820,442.00
7. Current Portion P&I - Due within 1 year							3,700.00	3,700.00
8. Interest Paid during current fiscal year								

**Total Principal and Interest Payments Made by Your School - All Funds**

Function	Fund		Principal (910)	Principal (920)	Interest (830)	Total (Principal +Interest)	Misc Other Uses (990)
5110	10	General Fund					
5110	20	Special Revenue Funds					
5110	30	Capital Projects Funds					
5110	40	Debt Service Fund	945,000.00		710,158.33	1,655,158.33	
5110	90	Permanent Fund					
5120	10	General Fund					
5120	20	Special Revenue Funds					
5120	30	Capital Projects Funds					
5120	40	Debt Service Fund					
5140	10	General Fund	462,936.01		14,322.93	477,258.94	
5140	20	Special Revenue Funds					
5140	30	Capital Projects Funds					
5140	40	Debt Service Fund					
5140	90	Permanent Fund					
<b>Total Debt Payments - Governmental Funds</b>			<b>\$1,407,936.01</b>		<b>\$724,481.26</b>	<b>\$2,132,417.27</b>	

Function	Fund		Principal (910)	Principal (920)	Interest (830)	Total (Principal +Interest)
5110	50	Enterprise Fund				
5110	60	Internal Service Fund				
5120	50	Enterprise Fund				
5120	60	Internal Service Fund				
5140	50	Enterprise Fund				
5140	60	Internal Service Fund				

**Total Debt Payments - Proprietary Funds**

**Debt Details**  
**Governmental Funds/ Activities**

Debt Category	Debt Issue Date (MM/YYYY)	Principal Amounts Only				Current Portion Due Within One Year (Principal and Interest)	Interest Paid During Fiscal Year
		Debt at Beginning of Fiscal Year	Additions	Reductions / Repayments	Debt at End of Fiscal Year		
General Obligation Bonds/Notes – CAB	05/2022	13,745,000.00		945,000.00	12,800,000.00	1,655,000.00	710,158.33
Leases and Other Right to Use Arrangements		1,162,441.00	402,391.00	462,936.00	1,101,896.00	463,036.00	
Compensated Absences		4,433,299.00	192,922.00	94,772.00	4,531,449.00	474,400.00	
Other Post-Employment Benefits (OPEB)		9,077,000.00		2,683,442.00	6,393,558.00		
Net Pension Liability		72,907,000.00	15,025,040.00	8,897,000.00	79,035,040.00		
<b>Totals for Debt Entered:</b>		<b>\$101,324,740.00</b>	<b>\$15,620,353.00</b>	<b>\$13,083,150.00</b>	<b>\$103,861,943.00</b>	<b>\$2,592,436.00</b>	<b>\$710,158.33</b>

**Bond Details**  
**Proprietary Funds**

Debt Category	Debt Issue Date (MM/YYYY)	Principal Amounts Only				Current Portion Due Within One Year (Principal and Interest)	Interest Paid During Fiscal Year
		Debt at Beginning of Fiscal Year	Additions	Reductions / Repayments	Debt at End of Fiscal Year		
Compensated Absences		76,431.00	569.00		77,000.00	3,700.00	
Net Pension Liability		1,488,000.00	306,960.00	182,000.00	1,612,960.00		
Other Post-Employment Benefits (OPEB)		185,000.00		54,518.00	130,482.00		
<b>Totals for Debt Entered:</b>		<b>\$1,749,431.00</b>	<b>\$307,529.00</b>	<b>\$236,518.00</b>	<b>\$1,820,442.00</b>	<b>\$3,700.00</b>	

LEA : 113361303 Cocalico SD

Printed 10/31/2023 11:37:46 AM

**Accreted Interest Detail**  
**Governmental Funds/ Activities**

Debt Category	Debt Issue Date (MM/YYYY)	Beginning Accreted Interest	Additions	Reductions	Ending Accreted Interest	Ending bond Principal	Ending Principal Plus Accreted Interest
General Obligation Bonds/Notes – CAB	05/2022		4,487,658.33	710,158.33	3,777,500.00	12,800,000.00	16,577,500.00
<b>Totals for Debt Entered:</b>			<b>\$4,487,658.33</b>	<b>\$710,158.33</b>	<b>\$3,777,500.00</b>	<b>\$12,800,000.00</b>	<b>\$16,577,500.00</b>

LEA : 113361303 Cocalico SD

Printed 10/31/2023 11:37:49 AM

**General Fund (10)**

**Section 1: Tuition/Purchased Services as Reported within Expenditure Detail**

	Amount
Tuition Reported in General Fund Expenditures 1000-560	4,436,913.20
Purchased Services in General Fund Expenditures 1000-594 and 1000-597	
<b>Section 1 Total</b>	<b>\$4,436,913.20</b>

**Section 2: Tuition Paid to Institution Types During Fiscal Year**

	Tuition Paid For Nonspecial Education	Tuition Paid For Special Education	Total
1 1306 Institutions			
2 Institutionalized Children's Programs			
3 Juveniles Incarcerated in Adult Facilities			
4 Residential Treatment Facilities			
5 Other Local Education Agencies	61,458.91	604,427.12	665,886.03
6 Brick and Mortar Charter Schools			
7 Cyber Charter Schools	898,029.01	758,124.23	1,656,153.24
8 Career and Technology Centers	1,081,749.57		1,081,749.57
9 Approved Private Schools		116,961.00	116,961.00
10 PA Chartered Schools for the Deaf and Blind			
11 Private Residential Rehabilitative Institutions	71,430.04	161,636.84	233,066.88
12 Juvenile Detention Centers			
13 Special Program Jointures			
14 Other Tuition Not Included Elsewhere In This Section		683,096.48	683,096.48
<b>Section 2 Total</b>	<b>\$2,112,667.53</b>	<b>\$2,324,245.67</b>	<b>\$4,436,913.20</b>

LEA : 113361303 Cocalico SD

Printed 10/31/2023 11:37:55 AM

**Food Service / Cafeteria Operations Fund (51)**

**3000 Operation of Non-Instructional Services**

**Total**

**100 Personnel Services – Salaries**

100 Personnel Services – Salaries 535,683.00

**Total Personnel Services – Salaries**

**\$535,683.00**

**200 Personnel Services – Employee Benefits**

210 Group Insurance – Contracted Provider 405.00

220 Social Security Contributions 39,480.00

230 PSERS Retirement Contributions 147,618.00

260 Workers’ Compensation 5,143.00

270 Group Insurance – Self-Insurance 135,312.00

280 Other Post-Employment Benefits (OPEB) (534.00)

299 All Other Employee Benefits 4,409.00

**Total Personnel Services – Employee Benefits**

**\$331,833.00**

**300 Purchased Professional and Technical Services**

300 Purchased Professional and Technical Services 2,785.00

322 Professional Educational Services – lus 416.00

**Total Purchased Professional and Technical Services**

**\$3,201.00**

**400 Purchased Property Services**

430 Repairs and Maintenance Services 150.00

**Total Purchased Property Services**

**\$150.00**

**600 Supplies**

610 General Supplies 107,413.00

630 Food 1,016,791.00

650 Supplies & Fees – Technology Related 7,005.00

**Total Supplies**

**\$1,131,209.00**

**700 Property**

740 Depreciation 6,511.00

**Total Property**

**\$6,511.00**

**800 Other Objects**

800 Other Objects 607.00

810 Dues and Fees 17.00

**Total Other Objects**

**\$624.00**

**Total 3000 Operation of Non-Instructional Services**

**\$2,009,211.00**

**Food Service / Cafeteria Operations Fund (51)**

	<u>Elementary</u>	<u>Secondary</u>	<u>Federal</u>	<u>Total</u>
<b>3100 Food Services</b>				
<b>100 Personnel Services – Salaries</b>				
100 Personnel Services – Salaries				535,683.00
<b>Total Personnel Services – Salaries</b>				<b>\$535,683.00</b>
<b>200 Personnel Services – Employee Benefits</b>				
210 Group Insurance – Contracted Provider				405.00
220 Social Security Contributions				39,480.00
230 PSERS Retirement Contributions				147,618.00
260 Workers' Compensation				5,143.00
270 Group Insurance – Self-Insurance				135,312.00
280 Other Post-Employment Benefits (OPEB)				(534.00)
299 All Other Employee Benefits				4,409.00
<b>Total Personnel Services – Employee Benefits</b>				<b>\$331,833.00</b>
<b>300 Purchased Professional and Technical Services</b>				
300 Purchased Professional and Technical Services				2,785.00
322 Professional Educational Services – Ius				416.00
<b>Total Purchased Professional and Technical Services</b>				<b>\$3,201.00</b>
<b>400 Purchased Property Services</b>				
430 Repairs and Maintenance Services				150.00
<b>Total Purchased Property Services</b>				<b>\$150.00</b>
<b>600 Supplies</b>				
610 General Supplies				107,413.00
630 Food				1,016,791.00
650 Supplies & Fees – Technology Related				7,005.00
<b>Total Supplies</b>				<b>\$1,131,209.00</b>
<b>700 Property</b>				
740 Depreciation			1,667.00	6,511.00
<b>Total Property</b>			<b>\$1,667.00</b>	<b>\$6,511.00</b>
<b>800 Other Objects</b>				
800 Other Objects				607.00
810 Dues and Fees				17.00
<b>Total Other Objects</b>				<b>\$624.00</b>
<b>Total 3100 Food Services</b>			<b>\$1,667.00</b>	<b>\$2,009,211.00</b>

LEA : 113361303 Cocalico SD

Printed 10/31/2023 11:37:52 AM

**Internal Service Fund (60)**

**2000 Support Services**

**Total**

**200 Personnel Services – Employee Benefits**

270 Group Insurance – Self-Insurance

8,463,023.00

**Total Personnel Services – Employee Benefits**

**\$8,463,023.00**

**Total 2000 Support Services**

**\$8,463,023.00**



Internal Service Fund (60)

2800 Support Services – Central

Elementary

Secondary

Federal

Total

200 Personnel Services – Employee Benefits

270 Group Insurance – Self-Insurance

8,463,023.00

**Total Personnel Services – Employee Benefits**

**\$8,463,023.00**

**Total 2800 Support Services – Central**

**\$8,463,023.00**

Internal Service Fund (60)

2830 Staff Services

Elementary

Secondary

Federal

Total

200 Personnel Services – Employee Benefits

270 Group Insurance – Self-Insurance

8,463,023.00

**Total Personnel Services – Employee Benefits**

**\$8,463,023.00**

**Total 2830 Staff Services**

**\$8,463,023.00**

Internal Service Fund (60)

2835 Health Services

Elementary

Secondary

Federal

Total

200 Personnel Services – Employee Benefits

270 Group Insurance – Self-Insurance

8,463,023.00

**Total Personnel Services – Employee Benefits**

**\$8,463,023.00**

**Total 2835 Health Services**

**\$8,463,023.00**

	<u>Food Service(51)</u>	<u>Child Care Operations(52)</u>	<u>Other Enterprise(58)</u>	<u>Internal Service(60)</u>	<u>Total</u>
<b>2000 <u>Support Services</u></b>					
2800 Support Services - Central				8,463,023.00	8,463,023.00
<b>Total Support Services</b>				<b>\$8,463,023.00</b>	<b>\$8,463,023.00</b>
<b>3000 <u>Operation of Non-Instructional Services</u></b>					
3100 Food Services	2,009,211.00				2,009,211.00
<b>Total Operation of Non-Instructional Services</b>	<b>\$2,009,211.00</b>				<b>\$2,009,211.00</b>
<b>TOTAL ACTUAL EXPENDITURES &amp; OTHER FINANCING USES</b>	<b>\$2,009,211.00</b>			<b>\$8,463,023.00</b>	<b>\$10,472,234.00</b>

LEA : 113361303 Cocalico SD

Printed 10/31/2023 11:38:04 AM

Fund	School	School Number	Local Personnel	Local Nonpersonnel	State Personnel	State Nonpersonnel	Federal Personnel	Federal Nonpersonnel	Total	Explanation
10										
	Adamstown El Sch	2510	4,309,287.91	689,239.42	1,872,697.17	299,524.37	200,578.18	8,592.48	7,379,919.53	
	Cocalico MS	6289	7,950,248.79	1,172,206.82	3,454,957.91	509,408.62	17,356.87	10,731.66	13,114,910.67	
	Cocalico SHS	6290	10,080,585.16	1,860,839.20	4,380,743.11	808,669.15	19,527.89	41,019.64	17,191,384.15	
	Denver El Sch	2506	4,598,844.25	862,312.53	1,998,530.34	374,737.14	210,289.12	9,494.95	8,054,208.33	
	Reamstown El Sch	5053	4,014,480.62	694,177.49	1,744,582.07	301,670.31	103,126.67	9,129.99	6,867,167.15	
<b>Total</b>			<b>30,953,446.73</b>	<b>5,278,775.46</b>	<b>13,451,510.60</b>	<b>2,294,009.59</b>	<b>550,878.73</b>	<b>78,968.72</b>	<b>52,607,589.83</b>	