

LEA Name : Cocalico SD
Address : 800 4th Street
Denver , PA 17517

County : Lancaster
AUN Number : 113361303
LEA Type : SD

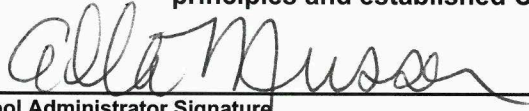
Annual Financial Report Accuracy Certification Statement

For Fiscal Year Ending
6/30/2022

Pennsylvania Department of Education
&
Office of Comptroller Operations

PDE-2056: Intermediate Unit
PDE-2057: School District, AVTS/CTC, Charter School,
and Special Program Jointure

CERTIFICATION: By signing this page I agree that the electronic data submitted is a complete and accurate statement of the financial operations and status of the local education agency for the fiscal year. It has been prepared in accordance with generally accepted accounting principles and established Commonwealth of PA reporting guidelines.



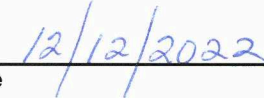
Chief School Administrator Signature

Date



Board Secretary Signature

Date



Lesley A Stricker

Contact Person

Istricker@cocalico.org

Contact Person E-mail Address

(717)336-1405

Ext :

Contact Person Telephone Number

(717)336-1415

Contact Person Fax Number

Audit Certification
Annual Financial Report:
For Fiscal Year Ending **6/30/2022**
(Pursuant to PA School Code Section 218(b))

LEA Name : Cocalico SD
AUN Number : 113361303
County : Lancaster

Audit Certification Due: 12/31/2022

This certification is applicable to the Annual Financial Report data submitted through the Consolidated Financial Reporting System (CFRS).

CERTIFICATION: By signing this page I agree that the financial statements of the school have been properly audited as noted above pursuant to Article XXIV, and in the auditor's professional opinion, the Annual Financial Report (PDE-2057) submitted through CFRS is materially consistent with the audited financial statements.

Chief School Administrator


Signature

11/2/22
Date

Board Secretary


Signature

11/1/2022
Date

Lesley A Stricker

Contact Person

lstricker@cocalico.org

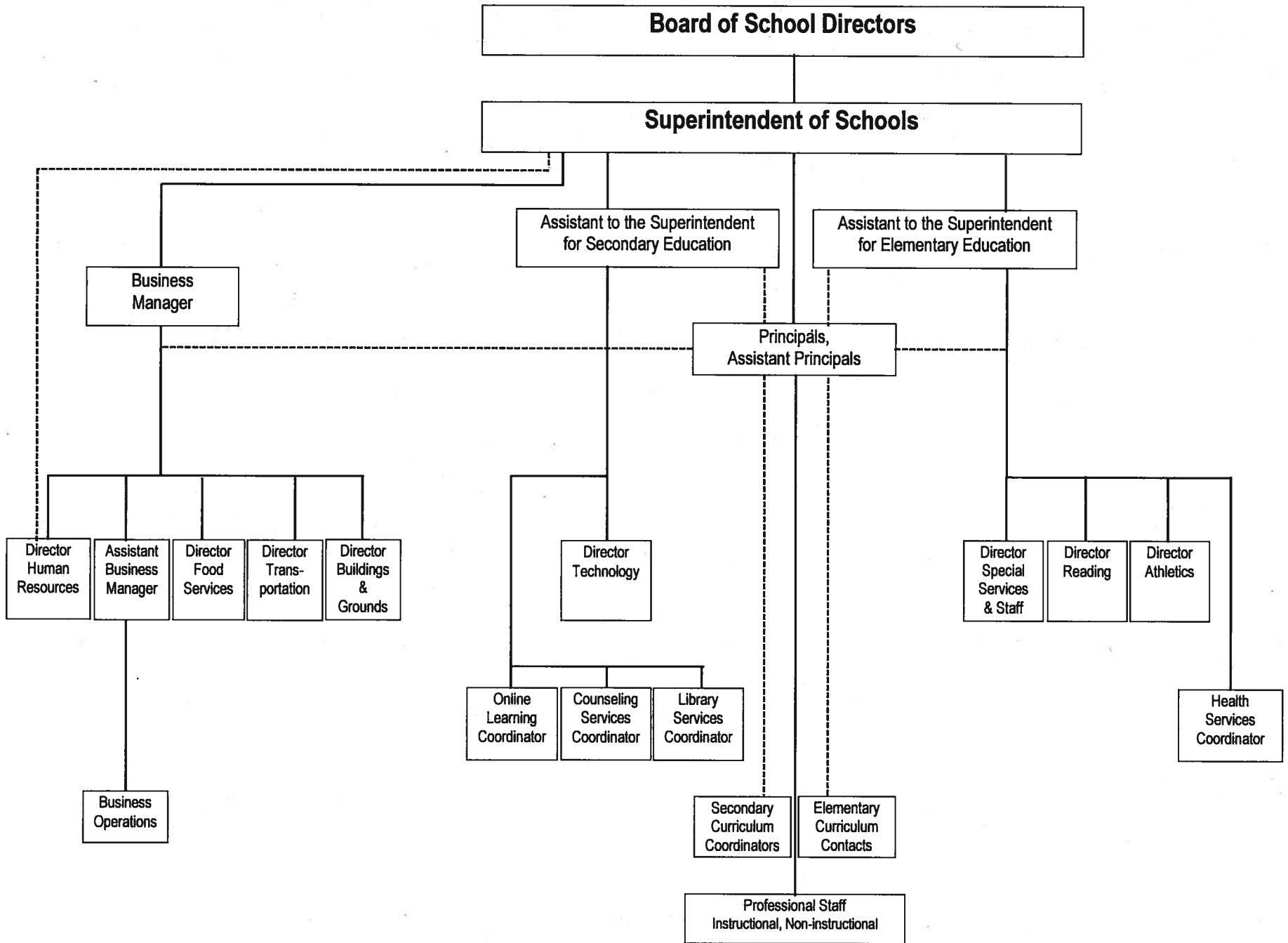
Contact Person E-mail Address

(717)336-1405 Ext :

Contact Person Telephone Number

(717)336-1415

Contact Person Fax Number





Book	Policy Manual
Section	600 Finances
Title	GASB Statement 34
Code	622
Status	Active
Adopted	July 20, 2009

Purpose

The district shall follow the requirements set forth by the Governmental Accounting Standards Board Statement No. 34 as it pertains to capital asset reporting.[\[1\]](#)

The primary objectives of implementing the GASB Statement 34 are to assure compliance with state requirements, and properly account for both the financial and economic resources of the district.

Definition

Capital assets shall include land, improvements to land, easements, buildings and building additions, building improvements, furniture, fixtures and equipment, vehicles, works of art and historical treasures, construction-in-progress and infrastructure. Capital assets are tangible assets used in operations and have initial useful lives extending beyond a single reporting period. Equipment will not change its original shape, appearance or character with use and it can be expected to last more than one (1) year with reasonable care and maintenance.

Authority

Participation of the school district in any such activity shall be in accordance with Board policy.[\[2\]](#)

Delegation of Responsibility

The responsibility to coordinate the compilation and preparation of all information necessary to implement this policy in accordance with district administrative procedures is delegated to the Business Manager, in cooperation with the local independent auditor.

The designated individual shall be responsible for implementing the necessary procedures to establish and maintain a fixed asset inventory, including depreciation schedules. Depreciation shall be computed on a straight-line basis over the estimated useful lives of the assets, using an averaging convention. Normal maintenance and repairs shall be charged to expense as incurred; major renewals and betterments that materially extend the life or increase the value of the asset shall be capitalized. A schedule of accumulated depreciation shall be consistent from year to year. The basis for depreciation, including groups of assets and useful lives, shall be in writing and submitted for review to the Board and independent auditors.

The Business Manager shall prepare the required Management Discussion and Analysis (MD&A). The MD&A shall be in the form required by GASB Statement 34 and shall be submitted to the Board for approval, prior to publication.

Prior to submission of the MD&A for Board approval, the district's independent auditors shall review the MD&A, in accordance with SAS No. 52, "Required Supplementary Information".

Guidelines

In order to associate debt with acquired assets and to avoid net asset deficits, any asset that has been acquired with debt proceeds shall be capitalized, regardless of the cost of the asset. The asset life of these assets shall be considered relative to the time of the respective debt amortizations.

The capitalization threshold shall be set at a level that will capture at least 80% of all fixed assets.

The assets listed below do not normally individually meet capitalization threshold criteria:

1. Library books.
2. Classroom texts.
3. Computer equipment.
4. Classroom furniture.

These asset category costs shall be capitalized and depreciated as groups when that group's acquisition cost exceeds the capitalization threshold in any given fiscal year.

For group asset depreciation purposes, the estimated useful life of the group may be based on the weighted average or simple average of the useful life of individual items, or on an assessment of the life of the group as a whole. Periodically, the district shall review the estimated life of groups of assets and adjust the remaining depreciation life of the group.

Assets that fall below the capitalization threshold for GASB 34 reporting purposes may still be significant for insurance, warranty service, and obsolescence/replacement policy tracking purposes. The district may record and maintain these non-GASB 34 asset inventories in subsidiary ledgers.

A capitalized asset shall be any asset acquired by donation or purchase that has a useful life of longer than one (1) year or extends the life of another capitalized asset or increases its value and meets a specific dollar threshold. At management's discretion, and in conjunction with the local auditor, capital assets purchased with long-term debt may be capitalized regardless of the specific dollar threshold for the type of class or asset acquired.

Value of Assets

All capitalized assets shall be recorded at historical cost at acquisition date or estimated cost if acquired prior to the date of the initial inventory. Any donated capital asset shall be recorded at the date of donation using the fair market value of the item at that date.

Dollar Threshold

A dollar threshold for each asset shall be set at an appropriate level. Management shall periodically review these levels with assistance from the local independent auditor and make any necessary modifications.

Legal

[1. 24 P.S. 613](#)

[2. 24 P.S. 218](#)

Governmental Accounting Standards Board, Statement No. 34

<u>Val Number</u>	<u>Description</u>	<u>Justification</u>
41140	<p>Expenditure Detail - There is an entry in account 5150-990 which should only include bond discounts. Please verify that only bond discounts are being reported within this code. Note: Underwriter's discounts are not bond discounts and should be recorded as a current expenditure in account 2390-810.</p> <p>Expenditure 5150-990, Fund 39: \$120,268.75</p>	Yes this is the bond discount cost.
42420	<p>Expenditure Detail: Total current year 2700-513 expenditure varies from prior year by 10%. Correct the data or enter a justification.</p> <p>2700-513, AFR Exp Detail: \$2,621,346.10 2700-513, PY AFR Amount: \$2,295,265.40</p>	added 2 new vans for homeless & non-pub students, transportation contract increased by 2.5%, added a second contracted company for new program & added after school & summer transportation.
50160	SOIN: All Governmental Fund General Obligation Bonds must include an amount for Interest Paid during Fiscal Year. Correct data or enter a justification.	Did not make a payment on the new bond during the 21/22 fiscal year.
50281	<p>SOIN: Current Year AFR amount must equal Prior Year AFR amount.</p> <p>SOIN, Beg Bal, Other Long Term Debt/Liabilities & Extended Term Financing Agreements: \$0.00 PY Ending Bal, Other Long Term Debt/Liabilities & Extended Term Financing Agreements: \$912,967.48</p>	lease information was recorded prior year in Other Long Term Debt, this year it was entered in the lease column.

Amounts Expressed in Whole Dollars	<u>General Fund</u> <u>(10)</u>	<u>Student Sponsored</u> <u>Activity Fund</u> <u>(21)</u>	<u>Public Purpose Trust</u> <u>(27)</u>	<u>Other Compt Approved</u> <u>(28)</u>	<u>Athletic / Activity</u> <u>(29)</u>
Assets And Deferred Outflows Of Resources					
Assets					
0100 Cash and Cash Equivalents	20,558,556	77,654			
0110 Investments	6,040,106				
0120 Taxes Receivable	1,220,019				
0130 Due From Other Funds	31,635				
0141 Due From Other Governments	3,975,331				
0142 State Revenue Receivable					
0143 Federal Revenue Receivable					
0145 Other Intergovernmental Revenue Receivable					
0146 Due from Primary Government					
0147 Due from Component Unit					
0150 Other Receivables	10,269				
0170 Inventories	54,709				
0180 Prepaid Expenses (Expenditures)	45,155				
0190 Other Current Assets					
Total Assets	\$31,935,780	\$77,654			
0910 Deferred Outflows of Resources					
Total Assets And Deferred Outflows Of Resources	\$31,935,780	\$77,654			

Amounts Expressed in Whole Dollars	<u>Capital Reserve (690.</u> <u>1850)</u> <u>(31)</u>	<u>Capital Reserve (1431)</u> <u>(32)</u>	<u>Other Capital Projects</u> <u>Fund</u> <u>(39)</u>	<u>Debt Service</u> <u>(40)</u>	<u>Permanent</u> <u>(90)</u>
Assets And Deferred Outflows Of Resources					
Assets					
0100 Cash and Cash Equivalents		4,289,251			
0110 Investments		199,771	13,847,609		
0120 Taxes Receivable					
0130 Due From Other Funds		4,995,017			
0141 Due From Other Governments					
0142 State Revenue Receivable					
0143 Federal Revenue Receivable					
0145 Other Intergovernmental Revenue Receivable					
0146 Due from Primary Government					
0147 Due from Component Unit					
0150 Other Receivables					
0170 Inventories					
0180 Prepaid Expenses (Expenditures)					
0190 Other Current Assets					
Total Assets		\$9,484,039	\$13,847,609		
0910 Deferred Outflows of Resources					
Total Assets And Deferred Outflows Of Resources		\$9,484,039	\$13,847,609		

Amounts Expressed in Whole Dollars

Total Governmental Funds

Assets And Deferred Outflows Of Resources

Assets	
0100 Cash and Cash Equivalents	24,925,461
0110 Investments	20,087,486
0120 Taxes Receivable	1,220,019
0130 Due From Other Funds	5,026,652
0141 Due From Other Governments	3,975,331
0142 State Revenue Receivable	
0143 Federal Revenue Receivable	
0145 Other Intergovernmental Revenue Receivable	
0146 Due from Primary Government	
0147 Due from Component Unit	
0150 Other Receivables	10,269
0170 Inventories	54,709
0180 Prepaid Expenses (Expenditures)	45,155
0190 Other Current Assets	
Total Assets	\$55,345,082
0910 Deferred Outflows of Resources	
Total Assets And Deferred Outflows Of Resources	\$55,345,082

Amounts Expressed in Whole Dollars

	<u>General Fund</u> <u>(10)</u>	<u>Student Sponsored</u> <u>Activity Fund</u> <u>(21)</u>	<u>Public Purpose Trust</u> <u>(27)</u>	<u>Other Compt Approved</u> <u>(28)</u>	<u>Athletic / Activity</u> <u>(29)</u>
Liabilities And Deferred Inflows Of Resources And Fund Balances					
Liabilities					
0400 Due to Other Funds	5,495,096				
0411 Due to Other Governments	768,781				
0412 Due to Primary Government					
0413 Due to Component Unit					
0420 Accounts Payable	334,005				
0430 Contracts Payable					
0440 Current Portion of Long-Term Debt					
0450 Short-Term Payables					
0461 Accrued Salaries and Benefits	6,665,805				
0462 Payroll Deductions and Withholding					
0480 Unearned Revenues	139,457				
0490 Other Current Liabilities	45,513				
Total Liabilities	\$13,448,657				
0950 Deferred Inflows of Resources	351,545				
Fund Balances					
0810 Nonspendable Fund Balance	99,864				
0820 Restricted Fund Balance					
0830 Committed Fund Balance	11,820,000				
0840 Assigned Fund Balance	460,000	77,654			
0850 Unassigned Fund Balance	5,755,714				
Total Fund Balances	\$18,135,578	\$77,654			
Total Liabilities, Deferred Inflows Of Resources And Fund Balances	\$31,935,780	\$77,654			

Amounts Expressed in Whole Dollars

<u>Capital Reserve (690.</u>	<u>Capital Reserve (1431)</u>	<u>Other Capital Projects</u>	<u>Debt Service</u>	<u>Permanent</u>
<u>1850)</u>	<u>(32)</u>	<u>Fund</u>	<u>(40)</u>	<u>(90)</u>
<u>(31)</u>		<u>(39)</u>		

Liabilities And Deferred Inflows Of Resources And Fund Balances

Liabilities

0400 Due to Other Funds				
0411 Due to Other Governments				
0412 Due to Primary Government				
0413 Due to Component Unit				
0420 Accounts Payable			4,719,711	
0430 Contracts Payable				
0440 Current Portion of Long-Term Debt				
0450 Short-Term Payables				
0461 Accrued Salaries and Benefits				
0462 Payroll Deductions and Withholding				
0480 Unearned Revenues				
0490 Other Current Liabilities				

Total Liabilities				\$4,719,711
--------------------------	--	--	--	--------------------

0950 Deferred Inflows of Resources

Fund Balances

0810 Nonspendable Fund Balance				
0820 Restricted Fund Balance			9,127,898	
0830 Committed Fund Balance				
0840 Assigned Fund Balance		9,484,039		
0850 Unassigned Fund Balance				

Total Fund Balances				\$9,484,039
----------------------------	--	--	--	--------------------

Total Liabilities, Deferred Inflows Of Resources And Fund Balances				\$9,484,039
---	--	--	--	--------------------

Amounts Expressed in Whole Dollars

Total Governmental Funds

Liabilities And Deferred Inflows Of Resources And Fund Balances

Liabilities

0400 Due to Other Funds	5,495,096
0411 Due to Other Governments	768,781
0412 Due to Primary Government	
0413 Due to Component Unit	
0420 Accounts Payable	5,053,716
0430 Contracts Payable	
0440 Current Portion of Long-Term Debt	
0450 Short-Term Payables	
0461 Accrued Salaries and Benefits	6,665,805
0462 Payroll Deductions and Withholding	
0480 Unearned Revenues	139,457
0490 Other Current Liabilities	45,513

Total Liabilities \$18,168,368

0950 Deferred Inflows of Resources	351,545
------------------------------------	---------

Fund Balances

0810 Nonspendable Fund Balance	99,864
0820 Restricted Fund Balance	9,127,898
0830 Committed Fund Balance	11,820,000
0840 Assigned Fund Balance	10,021,693
0850 Unassigned Fund Balance	5,755,714

Total Fund Balances \$36,825,169

Total Liabilities, Deferred Inflows Of Resources And Fund Balances \$55,345,082

Amounts Expressed in Whole Dollars	<u>General Fund</u> <u>(10)</u>	<u>Student Sponsored</u> <u>Activity Fund</u> <u>(21)</u>	<u>Public Purpose Trust</u> <u>(27)</u>	<u>Other Compt Approved</u> <u>(28)</u>	<u>Athletic / Activity</u> <u>(29)</u>
Revenues					
6000 Revenue from Local Sources	42,210,479	54,803			
7000 Revenue from State Sources	18,061,854				
8000 Revenue from Federal Sources	3,077,772				
Total Revenues	\$63,350,105	\$54,803			
Expenditures					
1000 Instruction	39,949,345				
2000 Support Services	18,756,448				
3000 Operation of Non-Instructional Services	1,187,735	59,823			
4000 Facilities Acquisition, Construction and Improvement Services					
5110 Debt Service					
5130 Refund of Prior Year Revenues / Receipts	10,253				
5140 Leases	462,293				
Total Expenditures	\$60,366,074	\$59,823			
Excess (Deficiency) Of Revenues Over Expenditures	\$2,984,031	(\$5,020)			
Other Financing Sources (Uses)					
9110 Face Value of Bonds Issued					
9120 Proceeds from Refunding of Bonds					
9130 Bond Premiums					
9200 Proceeds from Extended-Term Financing and Leases	692,854				
9300 Interfund Transfers - IN					
9400 Sale of or Compensation for Loss of Fixed Assets	57,330				
9710 Transfers from Component Units					
9720 Transfers from Primary Governments					
9910 Other Financing Sources Not Listed in the 9000 Series					
9990 Insurance Recoveries	14,098				
5120 Debt Service – Refunded Bonds					
5150 Bond Discounts					
5200 Interfund Transfers – Out	5,001,500				
5300 Transfers Out to Component Units/Primary Governments					
Total Other Financing Sources (Uses)	(\$4,237,218)				

Amounts Expressed in Whole Dollars	<u>Capital Reserve (690.1850)</u> <u>(31)</u>	<u>Capital Reserve (1431)</u> <u>(32)</u>	<u>Other Capital Projects</u> <u>Fund</u> <u>(39)</u>	<u>Debt Service</u> <u>(40)</u>	<u>Permanent</u> <u>(90)</u>
Revenues					
6000 Revenue from Local Sources		2,394	11,281		
7000 Revenue from State Sources					
8000 Revenue from Federal Sources					
Total Revenues		\$2,394	\$11,281		
Expenditures					
1000 Instruction					
2000 Support Services		1,629	59,597		
3000 Operation of Non-Instructional Services					
4000 Facilities Acquisition, Construction and Improvement Services		8,129,945	5,887,689		
5110 Debt Service					
5130 Refund of Prior Year Revenues / Receipts					
5140 Leases					
Total Expenditures		\$8,131,574	\$5,947,286		
Excess (Deficiency) Of Revenues Over Expenditures		(\$8,129,180)	(\$5,936,005)		
Other Financing Sources (Uses)					
9110 Face Value of Bonds Issued			13,745,000		
9120 Proceeds from Refunding of Bonds					
9130 Bond Premiums			1,439,171		
9200 Proceeds from Extended-Term Financing and Leases					
9300 Interfund Transfers - IN		5,001,500			
9400 Sale of or Compensation for Loss of Fixed Assets					
9710 Transfers from Component Units					
9720 Transfers from Primary Governments					
9910 Other Financing Sources Not Listed in the 9000 Series					
9990 Insurance Recoveries					
5120 Debt Service – Refunded Bonds					
5150 Bond Discounts			120,269		
5200 Interfund Transfers – Out					
5300 Transfers Out to Component Units/Primary Governments					
Total Other Financing Sources (Uses)		\$5,001,500	\$15,063,902		

Amounts Expressed in Whole Dollars	<u>Total Governmental Funds</u>
Revenues	
6000 Revenue from Local Sources	42,278,957
7000 Revenue from State Sources	18,061,854
8000 Revenue from Federal Sources	3,077,772
Total Revenues	\$63,418,583
Expenditures	
1000 Instruction	39,949,345
2000 Support Services	18,817,674
3000 Operation of Non-Instructional Services	1,247,558
4000 Facilities Acquisition, Construction and Improvement Services	14,017,634
5110 Debt Service	
5130 Refund of Prior Year Revenues / Receipts	10,253
5140 Leases	462,293
Total Expenditures	\$74,504,757
Excess (Deficiency) Of Revenues Over Expenditures	(\$11,086,174)
Other Financing Sources (Uses)	
9110 Face Value of Bonds Issued	13,745,000
9120 Proceeds from Refunding of Bonds	
9130 Bond Premiums	1,439,171
9200 Proceeds from Extended-Term Financing and Leases	692,854
9300 Interfund Transfers - IN	5,001,500
9400 Sale of or Compensation for Loss of Fixed Assets	57,330
9710 Transfers from Component Units	
9720 Transfers from Primary Governments	
9910 Other Financing Sources Not Listed in the 9000 Series	
9990 Insurance Recoveries	14,098
5120 Debt Service – Refunded Bonds	
5150 Bond Discounts	120,269
5200 Interfund Transfers – Out	5,001,500
5300 Transfers Out to Component Units/Primary Governments	
Total Other Financing Sources (Uses)	\$15,828,184

Amounts Expressed in Whole Dollars	<u>General Fund</u> <u>(10)</u>	<u>Student Sponsored</u> <u>Activity Fund</u> <u>(21)</u>	<u>Public Purpose Trust</u> <u>(27)</u>	<u>Other Compt Approved</u> <u>(28)</u>	<u>Athletic / Activity</u> <u>(29)</u>
Special And Extraordinary Items					
9920 Special Items – Gains					
9930 Extraordinary Items – Gains					
5520 Special Items – Losses					
5530 Extraordinary Items – Losses					
Net Change In Fund Balances	(\$1,253,187)	(\$5,020)			
Fund Balance					
0001 Fund Balance - Beginning of Fiscal Year	19,388,766	82,675			
Fund Balance - End Of Year	\$18,135,579	\$77,655			

Amounts Expressed in Whole Dollars	<u>Capital Reserve (690.</u> <u>1850)</u> <u>(31)</u>	<u>Capital Reserve (1431)</u> <u>(32)</u>	<u>Other Capital Projects</u> <u>Fund</u> <u>(39)</u>	<u>Debt Service</u> <u>(40)</u>	<u>Permanent</u> <u>(90)</u>
Special And Extraordinary Items					
9920 Special Items – Gains					
9930 Extraordinary Items – Gains					
5520 Special Items – Losses					
5530 Extraordinary Items – Losses					
Net Change In Fund Balances		(\$3,127,680)	\$9,127,897		
Fund Balance					
0001 Fund Balance - Beginning of Fiscal Year		12,611,719			
Fund Balance - End Of Year		\$9,484,039	\$9,127,897		

Amounts Expressed in Whole Dollars	<u>Total Governmental Funds</u>
Special And Extraordinary Items	
9920 Special Items – Gains	
9930 Extraordinary Items – Gains	
5520 Special Items – Losses	
5530 Extraordinary Items – Losses	
Net Change In Fund Balances	\$4,742,010
Fund Balance	
0001 Fund Balance - Beginning of Fiscal Year	32,083,160
Fund Balance - End Of Year	\$36,825,170

Amounts Expressed in Whole Dollars	<u>Food Service</u> <u>(51)</u>	<u>Child Care</u> <u>Operations</u> <u>(52)</u>	<u>Other Enterprise</u> <u>(58)</u>	<u>TOTAL</u>	<u>Internal Service</u> <u>(60)</u>
Assets And Deferred Outflows Of Resources					
Current Assets					
0100 Cash and Cash Equivalents	967,391			967,391	359,112
0110 Investments	159,854			159,854	
0130 Due From Other Funds	79			79	500,000
0141 Due From Other Governments	54,144			54,144	
0142 State Revenue Receivable					
0143 Federal Revenue Receivable					
0146 Due from Primary Government					
0147 Due from Component Unit					
0150 Other Receivables	1,403			1,403	112,961
0170 Inventories	105,962			105,962	
0180 Prepaid Expenses (Expenditures)					
0190 Other Current Assets					
Total Current Assets	\$1,288,833			\$1,288,833	\$972,073
Noncurrent Assets					
0211 Land					
0212 Site Improvements (Net)					
0220 Buildings and Building Improvements (Net)					
0230 Machinery, Equipment and Furniture (Net)	40,649			40,649	
0250 Construction in Progress					
0260 Long Term Prepayments					
0290 Other Noncurrent Assets					
Total Noncurrent Assets	\$40,649			\$40,649	
0910 Deferred Outflows of Resources	374,000			374,000	
Total Assets And Deferred Outflows Of Resources	\$1,703,482			\$1,703,482	\$972,073

Amounts Expressed in Whole Dollars	<u>Food Service</u> <u>(51)</u>	<u>Child Care</u> <u>Operations</u> <u>(52)</u>	<u>Other Enterprise</u> <u>(58)</u>	<u>TOTAL</u>	<u>Internal Service</u> <u>(60)</u>
Liabilities And Deferred Inflows Of Resources And Net Position					
Current Liabilities					
0400 Due to Other Funds	31,635			31,635	
0411 Due to Other Governments					
0413 Due to Component Unit					
0420 Accounts Payable	4,084			4,084	
0430 Contracts Payable					
0440 Current Portion of Long-Term Debt					
0450 Short-Term Payables					
0461 Accrued Salaries and Benefits					
0462 Payroll Deductions and Withholding					
0480 Unearned Revenues	85,137			85,137	
0490 Other Current Liabilities	13,472			13,472	693,787
Total Current Liabilities	\$134,328			\$134,328	\$693,787
Noncurrent Liabilities					
0510 Bonds Payable					
0520 Extended-Term Financing Agreements Payable					
0530 Lease Obligations					
0540 Accumulated Compensated Absences	72,031			72,031	
0550 Authority Lease Obligations					
0560 Other Post-Employment Benefits (OPEB)	185,000			185,000	
0570 Net Pension Liability	1,488,000			1,488,000	
0599 Other Noncurrent Liabilities					
Total Noncurrent Liabilities	\$1,745,031			\$1,745,031	
Total Liabilities	\$1,879,359			\$1,879,359	\$693,787
0950 Deferred Inflows of Resources	272,000			272,000	
Net Position					
0791 Net Investment in Capital Assets	40,649			40,649	
0008 Restricted Net Position (0792 – 0798)					
0799 Unrestricted Net Position	(488,526)			(488,526)	278,286
Total Net Position	(\$447,877)			(\$447,877)	\$278,286
Total Liabilities And Deferred Inflows Of Resources And Net Position	\$1,703,482			\$1,703,482	\$972,073

Amounts Expressed in Whole Dollars	<u>Food Service</u> <u>(51)</u>	<u>Child Care Operations</u> <u>(52)</u>	<u>Other Enterprise</u> <u>(58)</u>	<u>TOTAL</u>	<u>Internal Service</u> <u>(60)</u>
Operating Revenues					
6600 Food Service Revenue	311,107			311,107	
0071 Charges for Services					7,250,000
0072 Other Operating Revenue					
Total Operating Revenues	\$311,107			\$311,107	\$7,250,000
Operating Expenses					
100 Personnel Services – Salaries	532,474			532,474	
200 Personnel Services – Employee Benefits	329,289			329,289	7,141,016
300 Purchased Professional and Technical Services	4,373			4,373	
400 Purchased Property Services	150			150	
500 Other Purchased Services					
600 Supplies	1,113,644			1,113,644	
740 Depreciation	6,369			6,369	
810 Dues and Fees					
880 Refunds of Prior Years' Receipts					
890 Miscellaneous Expenditures	1,213			1,213	
Total Operating Expenses	\$1,987,512			\$1,987,512	\$7,141,016
Operating Income (Loss)	(\$1,676,405)			(\$1,676,405)	\$108,984
Non Operating Revenues (Expenses)					
6500 Earnings on Investments	235			235	51
6920 Contributions and Donations from Private Sources					
6930 Gains or Losses on Sale of Fixed Assets					
6991 Refunds of a Prior Year Expenditure					
7000 Revenue from State Sources	172,993			172,993	
8000 Revenue from Federal Sources	2,185,608			2,185,608	
9990 Insurance Recoveries					
820 Claims and Judgments Against the LEA					
830 Interest					
TOTAL Non Operating Revenues (Expenses)	\$2,358,836			\$2,358,836	\$51
Income (Loss) Before Contributions And Transfers	\$682,431			\$682,431	\$109,035

Amounts Expressed in Whole Dollars	<u>Food Service</u> <u>(51)</u>	<u>Child Care Operations</u> <u>(52)</u>	<u>Other Enterprise</u> <u>(58)</u>	<u>TOTAL</u>	<u>Internal Service</u> <u>(60)</u>
Contributions, Transfers, and Special and Extraordinary Items					
5200 Interfund Transfers – Out					
5300 Transfers Out to Component Units/Primary Governments					
5520 Special Items – Losses					
5530 Extraordinary Items – Losses					
9300 Interfund Transfers - IN					
9500 Capital Contributions					
9700 Transfers IN From Component Units/Primary Governments					
9920 Special Items – Gains					
9930 Extraordinary Items – Gains					
Change In Net Position	\$682,431			\$682,431	\$109,035
0002 Net Position - Beginning of Fiscal Year	(1,130,308)			(1,130,308)	169,251
0003 Accounting Changes / Residual Equity Transfers					
Net Position - End Of Year	(\$447,877)			(\$447,877)	\$278,286

LEA : 113361303 Cocalico SD

Printed 12/14/2022 10:13:36 AM

Amounts Expressed in Whole Dollars	<u>Food Service</u> <u>(51)</u>	<u>Child Care Operations</u> <u>(52)</u>	<u>Other Enterprise</u> <u>(58)</u>	<u>TOTAL</u>	<u>Internal Service(60)</u>
Cash Flows From Operating Activities					
0011 Cash Receipts From Users	301,273			301,273	
0012 Cash Receipts From Assessments Made to Other Funds					7,250,000
0013 Cash Receipts From Earnings on Investments					
0014 Cash Receipts From Other Operating Revenue					
0015 Cash Payments To Employees For Services	918,401			918,401	
0016 Cash Payments For Insurance Claims					7,441,977
0017 Cash Payments To Suppliers For Goods and Services	916,890			916,890	
0018 Cash Payments For Other Operating Expenses	1,363			1,363	
Net Cash Provided By (Used For) Operating Activities	(\$1,535,381)			(\$1,535,381)	(\$191,977)
Cash Flows From Non-Capital Financing Activities					
0021 Receipts From Local Sources - 6000					
0022 Receipts From State Sources - 7000	174,050			174,050	
0023 Receipts From Federal Sources -8000	1,994,829			1,994,829	
0024 Notes and Loans Received (Repaid)					
0025 Interest Paid on Notes/Loans - 5100-830					
0026 Operating Transfers In (Out)/Residual Equity Trans					
0027 Operating Transfers In (Out) Primary Government / Comp Unit					
0028 Receipts From Refund of Prior Year Expenditures - 6991					
0029 Special and Extraordinary Gains (losses)					
0030 Receipts from Insurance Recoveries -9990					
Net Cash Prov By (Used for) Non-Capital Financing Activities	\$2,168,879			\$2,168,879	
Cash Flows From Capital and Related Financing Activities					
0031 Payments For Fac Acq, Const, and Imp - 4000					
0032 Gain / (Loss) on Sale of Fixed Assets - 6930					
0033 Proceeds From Extended Term Financing - 9200					
0034 Principal Paid on Financing Agreements					
0035 Interest Paid on Financing Agreements - 5100-830					
0036 (Inc) Dec in Contributed Capital					
Net Cash Prov By (Used for) Capital and Related Financing Activities					
Cash Flows From Investing Activities					
0041 Earnings on Investments - 6500	235			235	51
0042 Purchase of Inv Securities / Deposits to Inv Pools	(171)			(171)	
0043 Receipts From Investment Pool Withdrawals					
0044 Proceeds from Sale and Maturity of Inv Securities					

LEA : 113361303 Cocalico SD

Printed 12/14/2022 10:13:36 AM

0045 Loans Received (Paid)

Net Cash Prov By (Used for) Investing Activities	\$64	\$64	\$51
---	-------------	-------------	-------------

	<u>Food Service</u> <u>(51)</u>	<u>Child Care Operations</u> <u>(52)</u>	<u>Other Enterprise</u> <u>(58)</u>	<u>TOTAL</u>	<u>Internal Service</u> <u>(60)</u>
Net Increase (Decrease) in Cash Flows	633,562			633,562	(191,926)
0004 Cash and Cash Equivalents Beginning of Year	333,829			333,829	551,038
Cash and Cash Equivalents at Year End	\$967,391			\$967,391	\$359,112

Reconciliation of Operating Income (Loss) To Net Cash Provided by (Used For) Operating Activities

0005 Operating Income (Loss) per REP	(1,676,405)			(1,676,405)	108,984
Adjustments					
0051 Depreciation and Net Amortization	6,369			6,369	
0052 Provision for Uncollectible Accounts					
0053 Other Adjustments	185,549			185,549	
Effect of Changes in Assets, Liabilities, Deferred Outflows and Deferred Inflows					
0054 (Inc) Dec In Accounts Receivable (0120-0150)	599			599	(250,000)
0055 Advances to Other Funds (0160)					
0056 (Inc) Dec in Inventories (0170)	(1,209)			(1,209)	
0057 (Inc) Dec in Prepaid Expenses (0180)	50			50	
0058 (Inc) Dec in Other Current or Noncurrent Assets	472			472	(112,961)
0064 Deferred Outflows (0910)					
0059 Inc (Dec) in Accounts Payable (0400-0450)	(2,331)			(2,331)	
0060 Inc (Dec) in Accrued Salaries/Benefits (0461)					
0065 Inc (Dec) in Net Pension Liabilities (0570)	(51,000)			(51,000)	
0066 Inc (Dec) in Other Postemp Benefit Oblig (0560)	8,000			8,000	
0061 Inc (Dec) in Payroll Deductions/Withholding (0462)					
0062 Inc (Dec) in Unearned Revenue (0480)	(10,905)			(10,905)	
0063 Inc (Dec) in Other Current or Noncurrent Liabilities	5,431			5,431	62,000
0067 Deferred Inflows (0950)					
Total Adjustments	\$141,025			\$141,025	(\$300,961)
Cash Provided By (Used for) Total	(\$1,535,380)			(\$1,535,380)	(\$191,977)

**COMBINED STATEMENT OF CASH FLOWS
SCHEDULE OF NONCASH INVESTING, CAPITAL, AND FINANCING ACTIVITIES**

Explanation of Transaction and Balance Sheet Effect	Amount
Total	

LEA : 113361303 Cocalico SD

Printed 12/14/2022 10:13:39 AM

Amounts Expressed in Whole Dollars	<u>Private Purpose Trust</u> <u>(71)</u>	<u>Investment Trust</u> <u>(72)</u>	<u>Pension Trust</u> <u>(73)</u>	<u>Student Activity Custodial</u> <u>(81)</u>
Assets And Deferred Outflows Of Resources				
Assets				
0100 Cash and Cash Equivalents				37,068
0110 Investments				
0130 Due From Other Funds				
0140 Due from Other Governments, Primary Government and Component Units				
0150 Other Receivables				
0170 Inventories				
0180 Prepaid Expenses (Expenditures)				
0190 Other Current Assets				
0220 Buildings and Building Improvements (Net)				
0230 Machinery, Equipment and Furniture (Net)				
Total Assets				\$37,068
0910 Deferred Outflows of Resources				
Total Assets And Deferred Outflows Of Resources				\$37,068

LEA : 113361303 Cocalico SD

Printed 12/14/2022 10:13:39 AM

Amounts Expressed in Whole Dollars	<u>Other Custodial</u> (89)	<u>Fiduciary Component Units</u> (98)	<u>Total Fiduciary Funds</u>
Assets And Deferred Outflows Of Resources			
Assets			
0100 Cash and Cash Equivalents			37,068
0110 Investments			
0130 Due From Other Funds			
0140 Due from Other Governments, Primary Government and Component Units			
0150 Other Receivables			
0170 Inventories			
0180 Prepaid Expenses (Expenditures)			
0190 Other Current Assets			
0220 Buildings and Building Improvements (Net)			
0230 Machinery, Equipment and Furniture (Net)			
Total Assets			\$37,068
0910 Deferred Outflows of Resources			
Total Assets And Deferred Outflows Of Resources			\$37,068

LEA : 113361303 Cocalico SD

Printed 12/14/2022 10:13:39 AM

Amounts Expressed in Whole Dollars

Private Purpose Trust
(71)

Investment Trust
(72)

Pension Trust
(73)

Student Activity Custodial
(81)

Liabilities, Deferred Inflows Of Resources And Net Position

Liabilities

- 0400 Due to Other Funds
- 0410 Due to Other Governments, Primary Government and Component Units
- 0420 Accounts Payable
- 0430 Contracts Payable
- 0450 Short-Term Payables
- 0460 Payroll Accruals and Withholdings
- 0480 Unearned Revenues
- 0490 Other Current Liabilities

Total Liabilities

- 0950 Deferred Inflows of Resources

Net Position

- 0791 Net Investment in Capital Assets
- 0009 Restricted Net Position (0792 – 0798) 37,068
- 0799 Unrestricted Net Position

Total Net Position

\$37,068

Total Liabilities, Deferred Inflows Of Resources And Net Position

\$37,068

LEA : 113361303 Cocalico SD

Printed 12/14/2022 10:13:39 AM

Amounts Expressed in Whole Dollars

Other Custodial
(89)

Fiduciary Component Units
(98)

Total Fiduciary Funds

Liabilities, Deferred Inflows Of Resources And Net Position

Liabilities

- 0400 Due to Other Funds
- 0410 Due to Other Governments, Primary Government and Component Units
- 0420 Accounts Payable
- 0430 Contracts Payable
- 0450 Short-Term Payables
- 0460 Payroll Accruals and Withholdings
- 0480 Unearned Revenues
- 0490 Other Current Liabilities

Total Liabilities

- 0950 Deferred Inflows of Resources

Net Position

- 0791 Net Investment in Capital Assets
- 0009 Restricted Net Position (0792 – 0798)
- 0799 Unrestricted Net Position

37,068

Total Net Position \$37,068

Total Liabilities, Deferred Inflows Of Resources And Net Position \$37,068

Amounts Expressed in Whole Dollars	<u>Private Purpose Trust</u> (71)	<u>Investment Trust</u> (72)	<u>Pension Trust</u> (73)	<u>Student Activity</u> <u>Custodial</u> (81)	<u>Other Custodial</u> (89)	<u>Fiduciary Component</u> <u>Units</u> (98)
Additions						
0091 Gifts and Contributions						
0095 Net Investment Earnings						
0092 Other Additions				83,692		
Deductions						
0093 Scholarships Awarded						
0094 Other Deductions				73,060		
Change In Net Position				\$10,632		
0006 Net Position – Beginning of Fiscal Year				26,436		
0007 Net Position Held in Trust for Pension Benefits						
Net Position - End of Fiscal Year				\$37,068		

Amounts Expressed in Whole Dollars	<u>Total Fiduciary Funds</u>
Additions	
0091 Gifts and Contributions	
0095 Net Investment Earnings	
0092 Other Additions	83,692
Deductions	
0093 Scholarships Awarded	
0094 Other Deductions	73,060
Change in Net Position	\$10,632
0006 Net Position – Beginning of Fiscal Year	26,436
0007 Net Position Held in Trust for Pension Benefits	
Net Position - End of Fiscal Year	\$37,068

	<u>Revenue Reported In Current Year</u>	<u>Current Year Tax Accrual</u>	<u>Prior Year Tax Accrual</u>	<u>Taxes Collected In Current Year</u>
<u>Revenue from Local Sources</u>				
6111 Current Real Estate Taxes	35,040,833.08			35,040,833.08
6112 Interim Real Estate Taxes	143,209.29			143,209.29
6113 Public Utility Realty Taxes	38,843.38			38,843.38
6114 Payments in Lieu of Current Taxes - State / Local	478.49			478.49
6151 Current Act 511 Earned Income Taxes	4,138,001.50			4,138,001.50
6153 Current Act 511 Real Estate Transfer Taxes	1,030,180.16			1,030,180.16
6411 Delinquent Real Estate Taxes	585,651.54			585,651.54
6420 Delinquent Per Capita Taxes, Section 679	16.50			16.50
6500 Earnings on Investments	21,244.99			
6700 Revenues from LEA Activities	64,991.44			
6821 State Revenue Received from Other Pennsylvania Public LEAs	132,268.00			
6831 Federal Revenue Received from Other Pennsylvania Public LEAs	182,202.56			
6832 Federal IDEA Revenue Received as Pass Through	715,049.01			
6833 Federal ARRA IDEA Revenue Received as Pass Through	5,927.01			
6910 Rentals	20,601.25			
6920 Contributions and Donations from Private Sources	11,360.99			
6941 Regular Day School Tuition	42,781.00			
6942 Summer School Tuition	9,125.00			
6944 Receipts from Other LEAs in Pennsylvania - Education	16,241.05			
6991 Refunds of a Prior Year Expenditure	11,473.14			
TOTAL Revenue from Local Sources	\$42,210,479.38			\$40,977,213.94

**Revenue Reported
In Current Year**

Revenue from State Sources

7111 Basic Education Funding-Formula	7,809,037.96		
7112 Basic Education Funding-Social Security	901,872.84		
7160 Tuition for Orphans Subsidy	107,789.99		
7271 Special Education funds for School-Aged Pupils	1,964,010.42		
7311 Pupil Transportation Subsidy	1,062,411.70		
7312 Nonpublic and Charter School Pupil Transportation Subsidy	97,020.00		
7320 Rental and Sinking Fund Payments / Building Reimbursement Subsidy	7,607.61		
7330 Health Services (Medical, Dental, Nurse, Act 25)	52,583.17		
7340 State Property Tax Reduction Allocation	1,109,545.53		
7505 Ready to Learn Block Grant	400,960.00		
7599 Other State Revenue Not Listed Elsewhere in the 7000 Series	8,558.99		
7820 State Share of Retirement Contributions	4,540,456.10		
TOTAL Revenue from State Sources	\$18,061,854.31		

**Revenue Reported
In Current Year**

Revenue from Federal Sources

8514 NCLB, Title I - Improving the Academic Achievement of the Disadvantaged	522,263.01		
8515 NCLB, Title II - Preparing, Training and Recruiting High Quality Teachers and Principals	117,304.82		
8516 NCLB, Title III - Language Instruction for Limited English Proficient and Immigrant Students	12,810.00		
8517 NCLB, Title IV - 21st Century Schools	26,734.00		
8741 Elementary and Secondary School Emergency Relief Fund (ESSER)	54,663.55		
8743 ESSER II - Elementary and Secondary School Emergency Relief Fund	1,281,796.31		
8744 ARP ESSER - Elementary and Secondary School Emergency Relief Fund	763,128.20		
8747 ARP ECF - Emergency Connectivity Fund	133,083.75		
8751 ARP ESSER Learning Loss	76,654.20		
8752 ARP ESSER Summer Programs	589.48		
8753 ARP ESSER Afterschool Programs	15,562.64		
8810 School-Based Access Medicaid Reimbursement Program (SBAP) Reimbursements (Access)	51,447.42		
8820 Medical Assistance Reimbursement for Administrative Claiming (Quarterly) Program	21,734.74		
TOTAL Revenue from Federal Sources	\$3,077,772.12		

**Revenue Reported
In Current Year**

Other Financing Sources

9220 Leases	692,854.00		
9400 Sale of or Compensation for Loss of Fixed Assets	57,329.50		
9990 Insurance Recoveries	14,097.60		
TOTAL Other Financing Sources	\$764,281.10		
TOTAL FROM ALL SOURCES	\$64,114,386.91		\$40,977,213.94

LEA : 113361303 Cocalico SD

Printed 12/14/2022 10:13:51 AM

	<u>General Fund (10)</u>	<u>Student Sponsored Activity Fund (21)</u>	<u>Public Purpose Trust (27)</u>	<u>Other Compt Approved (28)</u>	<u>Athletic / Activity (29)</u>	<u>Capital Reserve (690, 1850) (31)</u>
6000 Revenue from Local Sources						
6111 Current Real Estate Taxes	35,040,833.08					
6112 Interim Real Estate Taxes	143,209.29					
6113 Public Utility Realty Taxes	38,843.38					
6114 Payments in Lieu of Current Taxes - State / Local	478.49					
6151 Current Act 511 Earned Income Taxes	4,138,001.50					
6153 Current Act 511 Real Estate Transfer Taxes	1,030,180.16					
6411 Delinquent Real Estate Taxes	585,651.54					
6420 Delinquent Per Capita Taxes, Section 679	16.50					
6500 Earnings on Investments	21,244.99					
6700 Revenues from LEA Activities	64,991.44	54,803.43				
6821 State Revenue Received from Other Pennsylvania Public LEAs	132,268.00					
6831 Federal Revenue Received from Other Pennsylvania Public LEAs	182,202.56					
6832 Federal IDEA Revenue Received as Pass Through	715,049.01					
6833 Federal ARRA IDEA Revenue Received as Pass Through	5,927.01					
6910 Rentals	20,601.25					
6920 Contributions and Donations from Private Sources	11,360.99					
6941 Regular Day School Tuition	42,781.00					
6942 Summer School Tuition	9,125.00					
6944 Receipts from Other LEAs in Pennsylvania - Education	16,241.05					
6991 Refunds of a Prior Year Expenditure	11,473.14					
6000 Total Revenue from Local Sources	\$42,210,479.38	\$54,803.43				
7000 Revenue from State Sources						
7111 Basic Education Funding-Formula	7,809,037.96					
7112 Basic Education Funding-Social Security	901,872.84					
7160 Tuition for Orphans Subsidy	107,789.99					
7271 Special Education funds for School-Aged Pupils	1,964,010.42					
7311 Pupil Transportation Subsidy	1,062,411.70					
7312 Nonpublic and Charter School Pupil Transportation Subsidy	97,020.00					
7320 Rental and Sinking Fund Payments / Building Reimbursement Subsidy	7,607.61					
7330 Health Services (Medical, Dental, Nurse, Act 25)	52,583.17					
7340 State Property Tax Reduction Allocation	1,109,545.53					
7505 Ready to Learn Block Grant	400,960.00					
7599 Other State Revenue Not Listed Elsewhere in the 7000 Series	8,558.99					
7820 State Share of Retirement Contributions	4,540,456.10					
7000 Total Revenue from State Sources	\$18,061,854.31					

LEA : 113361303 Cocalico SD

Printed 12/14/2022 10:13:51 AM

	<u>Capital Reserve</u> <u>(1431) (32)</u>	<u>Other Capital</u> <u>Projects Fund (39)</u>	<u>Debt Service (40)</u>	<u>Permanent (90)</u>	<u>Total</u>
6000 Revenue from Local Sources					
6111 Current Real Estate Taxes					35,040,833.08
6112 Interim Real Estate Taxes					143,209.29
6113 Public Utility Realty Taxes					38,843.38
6114 Payments in Lieu of Current Taxes - State / Local					478.49
6151 Current Act 511 Earned Income Taxes					4,138,001.50
6153 Current Act 511 Real Estate Transfer Taxes					1,030,180.16
6411 Delinquent Real Estate Taxes					585,651.54
6420 Delinquent Per Capita Taxes, Section 679					16.50
6500 Earnings on Investments	2,393.70	11,280.88			34,919.57
6700 Revenues from LEA Activities					119,794.87
6821 State Revenue Received from Other Pennsylvania Public LEAs					132,268.00
6831 Federal Revenue Received from Other Pennsylvania Public LEAs					182,202.56
6832 Federal IDEA Revenue Received as Pass Through					715,049.01
6833 Federal ARRA IDEA Revenue Received as Pass Through					5,927.01
6910 Rentals					20,601.25
6920 Contributions and Donations from Private Sources					11,360.99
6941 Regular Day School Tuition					42,781.00
6942 Summer School Tuition					9,125.00
6944 Receipts from Other LEAs in Pennsylvania - Education					16,241.05
6991 Refunds of a Prior Year Expenditure					11,473.14
6000 Total Revenue from Local Sources	\$2,393.70	\$11,280.88			\$42,278,957.39
7000 Revenue from State Sources					
7111 Basic Education Funding-Formula					7,809,037.96
7112 Basic Education Funding-Social Security					901,872.84
7160 Tuition for Orphans Subsidy					107,789.99
7271 Special Education funds for School-Aged Pupils					1,964,010.42
7311 Pupil Transportation Subsidy					1,062,411.70
7312 Nonpublic and Charter School Pupil Transportation Subsidy					97,020.00
7320 Rental and Sinking Fund Payments / Building Reimbursement Subsidy					7,607.61
7330 Health Services (Medical, Dental, Nurse, Act 25)					52,583.17
7340 State Property Tax Reduction Allocation					1,109,545.53
7505 Ready to Learn Block Grant					400,960.00
7599 Other State Revenue Not Listed Elsewhere in the 7000 Series					8,558.99
7820 State Share of Retirement Contributions					4,540,456.10
7000 Total Revenue from State Sources					\$18,061,854.31

LEA : 113361303 Cocalico SD

Printed 12/14/2022 10:13:51 AM

	<u>General Fund (10)</u>	<u>Student Sponsored Activity Fund (21)</u>	<u>Public Purpose Trust (27)</u>	<u>Other Compt Approved (28)</u>	<u>Athletic / Activity (29)</u>	<u>Capital Reserve (690.1850) (31)</u>
8000 Revenue from Federal Sources						
8514 NCLB, Title I - Improving the Academic Achievement of the Disadvantaged	522,263.01					
8515 NCLB, Title II - Preparing, Training and Recruiting High Quality Teachers and Principals	117,304.82					
8516 NCLB, Title III - Language Instruction for Limited English Proficient and Immigrant Students	12,810.00					
8517 NCLB, Title IV - 21st Century Schools	26,734.00					
8741 Elementary and Secondary School Emergency Relief Fund (ESSER)	54,663.55					
8743 ESSER II - Elementary and Secondary School Emergency Relief Fund	1,281,796.31					
8744 ARP ESSER - Elementary and Secondary School Emergency Relief Fund	763,128.20					
8747 ARP ECF - Emergency Connectivity Fund	133,083.75					
8751 ARP ESSER Learning Loss	76,654.20					
8752 ARP ESSER Summer Programs	589.48					
8753 ARP ESSER Afterschool Programs	15,562.64					
8810 School-Based Access Medicaid Reimbursement Program (SBAP) Reimbursements (Access)	51,447.42					
8820 Medical Assistance Reimbursement for Administrative Claiming (Quarterly) Program	21,734.74					
8000 Total Revenue from Federal Sources	\$3,077,772.12					
9000 Other Financing Sources						
9110 Face Value of Bonds Issued						
9130 Bond Premiums						
9220 Leases	692,854.00					
9310 General Fund Transfers						
9400 Sale of or Compensation for Loss of Fixed Assets	57,329.50					
9990 Insurance Recoveries	14,097.60					
9000 Total Other Financing Sources	\$764,281.10					
Total From All Sources	\$64,114,386.91	\$54,803.43				

	<u>Capital Reserve</u> <u>(1431) (32)</u>	<u>Other Capital</u> <u>Projects Fund (39)</u>	<u>Debt Service (40)</u>	<u>Permanent (90)</u>	<u>Total</u>
8000 Revenue from Federal Sources					
8514 NCLB, Title I - Improving the Academic Achievement of the Disadvantaged					522,263.01
8515 NCLB, Title II - Preparing, Training and Recruiting High Quality Teachers and Principals					117,304.82
8516 NCLB, Title III - Language Instruction for Limited English Proficient and Immigrant Students					12,810.00
8517 NCLB, Title IV - 21st Century Schools					26,734.00
8741 Elementary and Secondary School Emergency Relief Fund (ESSER)					54,663.55
8743 ESSER II - Elementary and Secondary School Emergency Relief Fund					1,281,796.31
8744 ARP ESSER - Elementary and Secondary School Emergency Relief Fund					763,128.20
8747 ARP ECF - Emergency Connectivity Fund					133,083.75
8751 ARP ESSER Learning Loss					76,654.20
8752 ARP ESSER Summer Programs					589.48
8753 ARP ESSER Afterschool Programs					15,562.64
8810 School-Based Access Medicaid Reimbursement Program (SBAP) Reimbursements (Access)					51,447.42
8820 Medical Assistance Reimbursement for Administrative Claiming (Quarterly) Program					21,734.74
8000 Total Revenue from Federal Sources					\$3,077,772.12
9000 Other Financing Sources					
9110 Face Value of Bonds Issued		13,745,000.00			13,745,000.00
9130 Bond Premiums		1,439,171.40			1,439,171.40
9220 Leases					692,854.00
9310 General Fund Transfers	5,001,500.00				5,001,500.00
9400 Sale of or Compensation for Loss of Fixed Assets					57,329.50
9990 Insurance Recoveries					14,097.60
9000 Total Other Financing Sources	\$5,001,500.00	\$15,184,171.40			\$20,949,952.50
Total From All Sources	\$5,003,893.70	\$15,195,452.28			\$84,368,536.32

	<u>General Fund (10)</u>	<u>Student Sponsored Activity Fund (21)</u>	<u>Public Purpose Trust (27)</u>	<u>Other Compt Approved (28)</u>	<u>Athletic / Activity (29)</u>	<u>Capital Reserve (690.1850) (31)</u>
Revenue from Local Sources	42,210,479.38	54,803.43				
Revenue from State Sources	18,061,854.31					
Revenue from Federal Sources	3,077,772.12					
Other Financing Sources	764,281.10					
Total From All Sources	\$64,114,386.91	\$54,803.43				

	<u>Capital Reserve (1431)</u> <u>(32)</u>	<u>Other Capital Projects</u> <u>Fund (39)</u>	<u>Debt Service (40)</u>	<u>Permanent (90)</u>	<u>Total</u>
Revenue from Local Sources	2,393.70	11,280.88			42,278,957.39
Revenue from State Sources					18,061,854.31
Revenue from Federal Sources					3,077,772.12
Other Financing Sources	5,001,500.00	15,184,171.40			20,949,952.50
Total From All Sources	\$5,003,893.70	\$15,195,452.28			\$84,368,536.32

General Fund (10)

	<u>Total</u>
1000 Instruction	
100 Personnel Services – Salaries	
100 Personnel Services – Salaries	18,006,292.51
Total Personnel Services – Salaries	\$18,006,292.51
200 Personnel Services – Employee Benefits	
210 Group Insurance – Contracted Provider	26,256.30
220 Social Security Contributions	1,323,635.53
230 PSERS Retirement Contributions	6,319,884.93
260 Workers’ Compensation	173,196.50
270 Group Insurance – Self-Insurance	3,682,555.23
291 Other Retirement Plans	171,290.00
Total Personnel Services – Employee Benefits	\$11,696,818.49
300 Purchased Professional and Technical Services	
322 Professional Educational Services – Ius	3,310,321.28
323 Professional Educational Services – Other Educational Agencies	52,146.00
329 Professional Educational Services – Other	693,260.64
330 Other Professional Services	4,007.69
Total Purchased Professional and Technical Services	\$4,059,735.61
400 Purchased Property Services	
430 Repairs and Maintenance Services	28,507.12
440 Rentals	61,477.22
Total Purchased Property Services	\$89,984.34
500 Other Purchased Services	
510 Student Transportation Services	50,002.40
561 Tuition To Other School Districts Within the State	546,104.80
562 Tuition To Pennsylvania Charter Schools	1,541,769.26
563 Tuition To Nonpublic Schools	525,667.70
564 Tuition To Career and Technology Centers	1,200,501.91
567 Tuition To Approved Private Schools (APS) and PA Chartered Schools for the Deaf and Blind	109,350.00
568 Tuition To Private Residential Rehabilitative Institutions (PRRI) [In-State] and Detention Centers	299,276.66
569 Tuition – Other	36,166.25
580 Travel	1,206.08
Total Other Purchased Services	\$4,310,045.06
600 Supplies	
610 General Supplies	577,178.82
640 Books and Periodicals	30,054.36
650 Supplies & Fees – Technology Related	406,979.71
Total Supplies	\$1,014,212.89
700 Property	
752 Capital Equipment – Original and Additional	8,186.24
762 Capitalized Equipment - Replacement	21,322.19
766 Capitalized Technology Equipment – Replacement	344,040.00
790 Other Property	382,770.00
Total Property	\$756,318.43

LEA : 113361303 Cocalico SD

Printed 12/14/2022 10:13:58 AM

General Fund (10)

1000 Instruction	<u>Total</u>
800 Other Objects	
810 Dues and Fees	9,007.00
890 Miscellaneous Expenditures	6,931.00
Total Other Objects	\$15,938.00
Total 1000 Instruction	\$39,949,345.33

General Fund (10)

1100 Regular Programs – Elementary / Secondary

	<u>Elementary</u>	<u>Secondary</u>	<u>Federal</u>	<u>Total</u>
100 Personnel Services – Salaries				
100 Personnel Services – Salaries	5,737,558.68	8,319,879.68	707,273.81	14,764,712.17
Total Personnel Services – Salaries	\$5,737,558.68	\$8,319,879.68	\$707,273.81	\$14,764,712.17
200 Personnel Services – Employee Benefits				
210 Group Insurance – Contracted Provider	8,506.16	12,454.08	1,163.26	22,123.50
220 Social Security Contributions	420,810.25	611,692.27	52,577.43	1,085,079.95
230 PSERS Retirement Contributions	2,069,749.07	2,988,083.94	122,637.45	5,180,470.46
260 Workers' Compensation	55,187.64	80,026.17	6,803.04	142,016.85
270 Group Insurance – Self-Insurance	1,177,719.38	1,721,279.06	186,575.96	3,085,574.40
291 Other Retirement Plans	76,285.00	41,915.00		118,200.00
Total Personnel Services – Employee Benefits	\$3,808,257.50	\$5,455,450.52	\$369,757.14	\$9,633,465.16
300 Purchased Professional and Technical Services				
322 Professional Educational Services – lus		4,814.07	8,237.54	13,051.61
329 Professional Educational Services – Other	288,910.23	205,543.28	76,654.00	571,107.51
330 Other Professional Services		2,303.00	1,704.69	4,007.69
Total Purchased Professional and Technical Services	\$288,910.23	\$212,660.35	\$86,596.23	\$588,166.81
400 Purchased Property Services				
430 Repairs and Maintenance Services	8,119.50	20,387.62		28,507.12
Total Purchased Property Services	\$8,119.50	\$20,387.62		\$28,507.12
500 Other Purchased Services				
510 Student Transportation Services	10,110.25	4,563.70		14,673.95
561 Tuition To Other School Districts Within the State		38,109.30		38,109.30
562 Tuition To Pennsylvania Charter Schools	385,138.47	537,042.92		922,181.39
569 Tuition – Other		6,341.96		6,341.96
580 Travel	796.37	284.96		1,081.33
Total Other Purchased Services	\$396,045.09	\$586,342.84		\$982,387.93
600 Supplies				
610 General Supplies	393,916.02	145,224.70	12,867.30	552,008.02
640 Books and Periodicals	330.61	4,246.62	24,979.01	29,556.24
650 Supplies & Fees – Technology Related	277,443.26	90,250.26	18,249.07	385,942.59
Total Supplies	\$671,689.89	\$239,721.58	\$56,095.38	\$967,506.85
700 Property				
752 Capital Equipment – Original and Additional		631.99		631.99
762 Capitalized Equipment - Replacement		21,322.19		21,322.19
766 Capitalized Technology Equipment – Replacement	143,990.00	200,050.00		344,040.00
790 Other Property	192,100.00	190,670.00		382,770.00
Total Property	\$336,090.00	\$412,674.18		\$748,764.18
800 Other Objects				
810 Dues and Fees	803.00	5,704.00		6,507.00
Total Other Objects	\$803.00	\$5,704.00		\$6,507.00
Total 1100 Regular Programs – Elementary / Secondary	\$11,247,473.89	\$15,252,820.77	\$1,219,722.56	\$27,720,017.22

General Fund (10)

1110 Regular Programs

	<u>Elementary</u>	<u>Secondary</u>	<u>Federal</u>	<u>Total</u>
100 Personnel Services – Salaries				
100 Personnel Services – Salaries	5,737,558.68	8,319,879.68	427,058.29	14,484,496.65
Total Personnel Services – Salaries	\$5,737,558.68	\$8,319,879.68	\$427,058.29	\$14,484,496.65
200 Personnel Services – Employee Benefits				
210 Group Insurance – Contracted Provider	8,506.16	12,454.08	748.62	21,708.86
220 Social Security Contributions	420,810.25	611,692.27	31,831.73	1,064,334.25
230 PSERS Retirement Contributions	2,069,749.07	2,988,083.94	73,683.52	5,131,516.53
260 Workers' Compensation	55,187.64	80,026.17	4,107.73	139,321.54
270 Group Insurance – Self-Insurance	1,177,719.38	1,721,279.06	124,404.90	3,023,403.34
291 Other Retirement Plans	76,285.00	41,915.00		118,200.00
Total Personnel Services – Employee Benefits	\$3,808,257.50	\$5,455,450.52	\$234,776.50	\$9,498,484.52
300 Purchased Professional and Technical Services				
322 Professional Educational Services – Ius		4,814.07		4,814.07
329 Professional Educational Services – Other	288,910.23	205,543.28	76,654.00	571,107.51
330 Other Professional Services		2,303.00	1,704.69	4,007.69
Total Purchased Professional and Technical Services	\$288,910.23	\$212,660.35	\$78,358.69	\$579,929.27
400 Purchased Property Services				
430 Repairs and Maintenance Services	8,119.50	20,387.62		28,507.12
Total Purchased Property Services	\$8,119.50	\$20,387.62		\$28,507.12
500 Other Purchased Services				
510 Student Transportation Services	10,110.25	4,563.70		14,673.95
561 Tuition To Other School Districts Within the State		38,109.30		38,109.30
562 Tuition To Pennsylvania Charter Schools	385,138.47	537,042.92		922,181.39
569 Tuition – Other		6,341.96		6,341.96
580 Travel	796.37	284.96		1,081.33
Total Other Purchased Services	\$396,045.09	\$586,342.84		\$982,387.93
600 Supplies				
610 General Supplies	393,916.02	145,224.70	4,464.90	543,605.62
640 Books and Periodicals	330.61	4,246.62	392.33	4,969.56
650 Supplies & Fees – Technology Related	277,443.26	90,250.26	6,470.00	374,163.52
Total Supplies	\$671,689.89	\$239,721.58	\$11,327.23	\$922,738.70
700 Property				
752 Capital Equipment – Original and Additional		631.99		631.99
762 Capitalized Equipment - Replacement		21,322.19		21,322.19
766 Capitalized Technology Equipment – Replacement	143,990.00	200,050.00		344,040.00
790 Other Property	192,100.00	190,670.00		382,770.00
Total Property	\$336,090.00	\$412,674.18		\$748,764.18
800 Other Objects				
810 Dues and Fees	803.00	5,704.00		6,507.00
Total Other Objects	\$803.00	\$5,704.00		\$6,507.00
Total 1110 Regular Programs	\$11,247,473.89	\$15,252,820.77	\$751,520.71	\$27,251,815.37

General Fund (10)

	<u>Elementary</u>	<u>Secondary</u>	<u>Federal</u>	<u>Total</u>
1190 Federally-Funded Regular Programs				
100 Personnel Services – Salaries				
100 Personnel Services – Salaries			280,215.52	280,215.52
Total Personnel Services – Salaries			\$280,215.52	\$280,215.52
200 Personnel Services – Employee Benefits				
210 Group Insurance – Contracted Provider			414.64	414.64
220 Social Security Contributions			20,745.70	20,745.70
230 PSERS Retirement Contributions			48,953.93	48,953.93
260 Workers' Compensation			2,695.31	2,695.31
270 Group Insurance – Self-Insurance			62,171.06	62,171.06
Total Personnel Services – Employee Benefits			\$134,980.64	\$134,980.64
300 Purchased Professional and Technical Services				
322 Professional Educational Services – lus			8,237.54	8,237.54
Total Purchased Professional and Technical Services			\$8,237.54	\$8,237.54
600 Supplies				
610 General Supplies			8,402.40	8,402.40
640 Books and Periodicals			24,586.68	24,586.68
650 Supplies & Fees – Technology Related			11,779.07	11,779.07
Total Supplies			\$44,768.15	\$44,768.15
Total 1190 Federally-Funded Regular Programs			\$468,201.85	\$468,201.85

General Fund (10)

1200 Special Programs – Elementary / Secondary

	<u>Elementary</u>	<u>Secondary</u>	<u>Federal</u>	<u>Total</u>
100 Personnel Services – Salaries				
100 Personnel Services – Salaries	1,138,207.20	1,989,454.14	16,787.50	3,144,448.84
Total Personnel Services – Salaries	\$1,138,207.20	\$1,989,454.14	\$16,787.50	\$3,144,448.84
200 Personnel Services – Employee Benefits				
210 Group Insurance – Contracted Provider	1,474.46	2,658.34		4,132.80
220 Social Security Contributions	83,721.82	146,312.29	1,256.39	231,290.50
230 PSERS Retirement Contributions	399,674.19	702,869.60	2,932.77	1,105,476.56
260 Workers' Compensation	11,016.04	19,229.35		30,245.39
270 Group Insurance – Self-Insurance	216,470.46	380,510.37		596,980.83
291 Other Retirement Plans		53,090.00		53,090.00
Total Personnel Services – Employee Benefits	\$712,356.97	\$1,304,669.95	\$4,189.16	\$2,021,216.08
300 Purchased Professional and Technical Services				
322 Professional Educational Services – Ius	788,240.83	1,871,272.85	633,964.53	3,293,478.21
323 Professional Educational Services – Other Educational Agencies	19,235.00	15,351.00		34,586.00
329 Professional Educational Services – Other	34,108.64	87,067.09		121,175.73
Total Purchased Professional and Technical Services	\$841,584.47	\$1,973,690.94	\$633,964.53	\$3,449,239.94
500 Other Purchased Services				
510 Student Transportation Services		1,090.46	11,201.87	12,292.33
561 Tuition To Other School Districts Within the State	2,518.12	501,106.02		503,624.14
562 Tuition To Pennsylvania Charter Schools	139,117.55	480,470.32		619,587.87
563 Tuition To Nonpublic Schools	205,458.70	283,381.30	36,827.70	525,667.70
567 Tuition To Approved Private Schools (APS) and PA Chartered Schools for the Deaf and Blind	109,350.00			109,350.00
568 Tuition To Private Residential Rehabilitative Institutions (PRRI) [In-State] and Detention Centers		190,783.52	11,480.67	202,264.19
569 Tuition – Other		29,824.29		29,824.29
580 Travel	99.37	25.38		124.75
Total Other Purchased Services	\$456,543.74	\$1,486,681.29	\$59,510.24	\$2,002,735.27
600 Supplies				
610 General Supplies	6,918.35	12,156.09	5,452.98	24,527.42
640 Books and Periodicals	189.41	269.58		458.99
650 Supplies & Fees – Technology Related	8,600.00	12,437.12		21,037.12
Total Supplies	\$15,707.76	\$24,862.79	\$5,452.98	\$46,023.53
700 Property				
752 Capital Equipment – Original and Additional	7,554.25			7,554.25
Total Property	\$7,554.25			\$7,554.25
800 Other Objects				
810 Dues and Fees	12.50	2,487.50		2,500.00
890 Miscellaneous Expenditures	265.00	330.00		595.00
Total Other Objects	\$277.50	\$2,817.50		\$3,095.00
Total 1200 Special Programs – Elementary / Secondary	\$3,172,231.89	\$6,782,176.61	\$719,904.41	\$10,674,312.91

General Fund (10)

1240 Academic Support

	<u>Elementary</u>	<u>Secondary</u>	<u>Federal</u>	<u>Total</u>
100 Personnel Services – Salaries				
100 Personnel Services – Salaries	1,138,207.20	1,989,454.14	16,787.50	3,144,448.84
Total Personnel Services – Salaries	\$1,138,207.20	\$1,989,454.14	\$16,787.50	\$3,144,448.84
200 Personnel Services – Employee Benefits				
210 Group Insurance – Contracted Provider	1,474.46	2,658.34		4,132.80
220 Social Security Contributions	83,721.82	146,312.29	1,256.39	231,290.50
230 PSERS Retirement Contributions	399,674.19	702,869.60	2,932.77	1,105,476.56
260 Workers' Compensation	11,016.04	19,229.35		30,245.39
270 Group Insurance – Self-Insurance	216,470.46	380,510.37		596,980.83
291 Other Retirement Plans		53,090.00		53,090.00
Total Personnel Services – Employee Benefits	\$712,356.97	\$1,304,669.95	\$4,189.16	\$2,021,216.08
300 Purchased Professional and Technical Services				
322 Professional Educational Services – Ius	788,240.83	1,871,272.85	633,964.53	3,293,478.21
323 Professional Educational Services – Other Educational Agencies	19,235.00	15,351.00		34,586.00
329 Professional Educational Services – Other	34,108.64	87,067.09		121,175.73
Total Purchased Professional and Technical Services	\$841,584.47	\$1,973,690.94	\$633,964.53	\$3,449,239.94
500 Other Purchased Services				
510 Student Transportation Services		1,090.46	11,201.87	12,292.33
561 Tuition To Other School Districts Within the State	2,518.12	501,106.02		503,624.14
562 Tuition To Pennsylvania Charter Schools	139,117.55	480,470.32		619,587.87
580 Travel	99.37	25.38		124.75
Total Other Purchased Services	\$141,735.04	\$982,692.18	\$11,201.87	\$1,135,629.09
600 Supplies				
610 General Supplies	6,918.35	12,156.09	5,452.98	24,527.42
640 Books and Periodicals	189.41	269.58		458.99
650 Supplies & Fees – Technology Related	8,600.00	12,437.12		21,037.12
Total Supplies	\$15,707.76	\$24,862.79	\$5,452.98	\$46,023.53
700 Property				
752 Capital Equipment – Original and Additional	7,554.25			7,554.25
Total Property	\$7,554.25			\$7,554.25
800 Other Objects				
810 Dues and Fees	12.50	2,487.50		2,500.00
890 Miscellaneous Expenditures	265.00	330.00		595.00
Total Other Objects	\$277.50	\$2,817.50		\$3,095.00
Total 1240 Academic Support	\$2,857,423.19	\$6,278,187.50	\$671,596.04	\$9,807,206.73

General Fund (10)

1241 Learning Support – Public

	<u>Elementary</u>	<u>Secondary</u>	<u>Federal</u>	<u>Total</u>
100 Personnel Services – Salaries				
100 Personnel Services – Salaries	1,095,394.07	1,989,454.14	16,787.50	3,101,635.71
Total Personnel Services – Salaries	\$1,095,394.07	\$1,989,454.14	\$16,787.50	\$3,101,635.71
200 Personnel Services – Employee Benefits				
210 Group Insurance – Contracted Provider	1,411.46	2,658.34		4,069.80
220 Social Security Contributions	80,449.94	146,312.29	1,256.39	228,018.62
230 PSERS Retirement Contributions	384,715.35	702,869.60	2,932.77	1,090,517.72
260 Workers' Compensation	10,604.23	19,229.35		29,833.58
270 Group Insurance – Self-Insurance	207,818.53	380,510.37		588,328.90
291 Other Retirement Plans		53,090.00		53,090.00
Total Personnel Services – Employee Benefits	\$684,999.51	\$1,304,669.95	\$4,189.16	\$1,993,858.62
300 Purchased Professional and Technical Services				
322 Professional Educational Services – Ius	788,240.83	1,871,272.85	633,964.53	3,293,478.21
323 Professional Educational Services – Other Educational Agencies	19,235.00	15,351.00		34,586.00
329 Professional Educational Services – Other	34,108.64	87,067.09		121,175.73
Total Purchased Professional and Technical Services	\$841,584.47	\$1,973,690.94	\$633,964.53	\$3,449,239.94
500 Other Purchased Services				
510 Student Transportation Services		705.19	11,201.87	11,907.06
561 Tuition To Other School Districts Within the State	2,518.12	501,106.02		503,624.14
562 Tuition To Pennsylvania Charter Schools	139,117.55	480,470.32		619,587.87
580 Travel		25.38		25.38
Total Other Purchased Services	\$141,635.67	\$982,306.91	\$11,201.87	\$1,135,144.45
600 Supplies				
610 General Supplies	6,828.35	12,106.84	5,452.98	24,388.17
640 Books and Periodicals	189.41	163.48		352.89
650 Supplies & Fees – Technology Related	8,420.00	12,267.12		20,687.12
Total Supplies	\$15,437.76	\$24,537.44	\$5,452.98	\$45,428.18
700 Property				
752 Capital Equipment – Original and Additional	7,554.25			7,554.25
Total Property	\$7,554.25			\$7,554.25
800 Other Objects				
810 Dues and Fees	0.75	149.25		150.00
Total Other Objects	\$0.75	\$149.25		\$150.00
Total 1241 Learning Support – Public	\$2,786,606.48	\$6,274,808.63	\$671,596.04	\$9,733,011.15

General Fund (10)

1243 Gifted Support

	<u>Elementary</u>	<u>Secondary</u>	<u>Federal</u>	<u>Total</u>
100 Personnel Services – Salaries				
100 Personnel Services – Salaries	42,813.13			42,813.13
Total Personnel Services – Salaries	\$42,813.13			\$42,813.13
200 Personnel Services – Employee Benefits				
210 Group Insurance – Contracted Provider	63.00			63.00
220 Social Security Contributions	3,271.88			3,271.88
230 PSERS Retirement Contributions	14,958.84			14,958.84
260 Workers' Compensation	411.81			411.81
270 Group Insurance – Self-Insurance	8,651.93			8,651.93
Total Personnel Services – Employee Benefits	\$27,357.46			\$27,357.46
500 Other Purchased Services				
510 Student Transportation Services		385.27		385.27
580 Travel	99.37			99.37
Total Other Purchased Services	\$99.37	\$385.27		\$484.64
600 Supplies				
610 General Supplies	90.00	49.25		139.25
640 Books and Periodicals		106.10		106.10
650 Supplies & Fees – Technology Related	180.00	170.00		350.00
Total Supplies	\$270.00	\$325.35		\$595.35
800 Other Objects				
810 Dues and Fees	11.75	2,338.25		2,350.00
890 Miscellaneous Expenditures	265.00	330.00		595.00
Total Other Objects	\$276.75	\$2,668.25		\$2,945.00
Total 1243 Gifted Support	\$70,816.71	\$3,378.87		\$74,195.58

General Fund (10)

1290 Special Programs - Other Support

500 Other Purchased Services

	<u>Elementary</u>	<u>Secondary</u>	<u>Federal</u>	<u>Total</u>
563 Tuition To Nonpublic Schools	205,458.70	283,381.30	36,827.70	525,667.70
567 Tuition To Approved Private Schools (APS) and PA Chartered Schools for the Deaf and Blind	109,350.00			109,350.00
568 Tuition To Private Residential Rehabilitative Institutions (PRRI) [In-State] and Detention Centers		190,783.52	11,480.67	202,264.19
569 Tuition – Other		29,824.29		29,824.29
Total Other Purchased Services	\$314,808.70	\$503,989.11	\$48,308.37	\$867,106.18
Total 1290 Special Programs - Other Support	\$314,808.70	\$503,989.11	\$48,308.37	\$867,106.18

General Fund (10)

1300 Vocational Education

400 Purchased Property Services

440 Rentals

Elementary

Secondary

Federal

Total

61,477.22

61,477.22

Total Purchased Property Services

\$61,477.22

\$61,477.22

500 Other Purchased Services

564 Tuition To Career and Technology Centers

1,200,501.91

1,200,501.91

Total Other Purchased Services

\$1,200,501.91

\$1,200,501.91

Total 1300 Vocational Education

\$1,261,979.13

\$1,261,979.13

General Fund (10)

	<u>Elementary</u>	<u>Secondary</u>	<u>Federal</u>	<u>Total</u>
1400 Other Instructional Programs – Elementary / Secondary				
100 Personnel Services – Salaries				
100 Personnel Services – Salaries	180.00		96,951.50	97,131.50
Total Personnel Services – Salaries	\$180.00		\$96,951.50	\$97,131.50
200 Personnel Services – Employee Benefits				
220 Social Security Contributions	13.60		7,251.48	7,265.08
230 PSERS Retirement Contributions	12,773.29	4,227.14	16,937.48	33,937.91
260 Workers' Compensation	1.73		932.53	934.26
Total Personnel Services – Employee Benefits	\$12,788.62	\$4,227.14	\$25,121.49	\$42,137.25
300 Purchased Professional and Technical Services				
323 Professional Educational Services – Other Educational Agencies		17,560.00		17,560.00
329 Professional Educational Services – Other			977.40	977.40
Total Purchased Professional and Technical Services		\$17,560.00	\$977.40	\$18,537.40
500 Other Purchased Services				
510 Student Transportation Services			23,036.12	23,036.12
561 Tuition To Other School Districts Within the State		4,371.36		4,371.36
568 Tuition To Private Residential Rehabilitative Institutions (PRRI) [In-State] and Detention Centers		97,012.47		97,012.47
Total Other Purchased Services		\$101,383.83	\$23,036.12	\$124,419.95
600 Supplies				
610 General Supplies	179.01		464.37	643.38
640 Books and Periodicals			39.13	39.13
Total Supplies	\$179.01		\$503.50	\$682.51
800 Other Objects				
890 Miscellaneous Expenditures			6,336.00	6,336.00
Total Other Objects			\$6,336.00	\$6,336.00
Total 1400 Other Instructional Programs – Elementary / Secondary	\$13,147.63	\$123,170.97	\$152,926.01	\$289,244.61

General Fund (10)

1420 Summer School

	<u>Elementary</u>	<u>Secondary</u>	<u>Federal</u>	<u>Total</u>
100 Personnel Services – Salaries				
100 Personnel Services – Salaries			47,095.25	47,095.25
Total Personnel Services – Salaries			\$47,095.25	\$47,095.25
200 Personnel Services – Employee Benefits				
220 Social Security Contributions			3,563.01	3,563.01
230 PSERS Retirement Contributions	7,670.25	557.29	8,227.53	16,455.07
260 Workers’ Compensation			452.99	452.99
Total Personnel Services – Employee Benefits	\$7,670.25	\$557.29	\$12,243.53	\$20,471.07
300 Purchased Professional and Technical Services				
329 Professional Educational Services – Other			977.40	977.40
Total Purchased Professional and Technical Services			\$977.40	\$977.40
500 Other Purchased Services				
510 Student Transportation Services			5,661.00	5,661.00
Total Other Purchased Services			\$5,661.00	\$5,661.00
600 Supplies				
610 General Supplies	179.01		464.37	643.38
640 Books and Periodicals			39.13	39.13
Total Supplies	\$179.01		\$503.50	\$682.51
Total 1420 Summer School	\$7,849.26	\$557.29	\$66,480.68	\$74,887.23

General Fund (10)

1430 Homebound Instruction

Elementary

Secondary

Federal

Total

300 Purchased Professional and Technical Services

323 Professional Educational Services – Other Educational Agencies

17,560.00

17,560.00

Total Purchased Professional and Technical Services

\$17,560.00

\$17,560.00

Total 1430 Homebound Instruction

\$17,560.00

\$17,560.00

General Fund (10)

1440 Alternative Regular Education Programs

Elementary

Secondary

Federal

Total

500 Other Purchased Services

561 Tuition To Other School Districts Within the State

4,371.36

4,371.36

568 Tuition To Private Residential Rehabilitative Institutions (PRRI) [In-State] and Detention Centers

97,012.47

97,012.47

Total Other Purchased Services

\$101,383.83

\$101,383.83

Total 1440 Alternative Regular Education Programs

\$101,383.83

\$101,383.83

LEA : 113361303 Cocalico SD

Printed 12/14/2022 10:13:58 AM

General Fund (10)

1441 Adjudicated / Court-Placed Programs

Elementary

Secondary

Federal

Total

500 Other Purchased Services

561 Tuition To Other School Districts Within the State

4,371.36

4,371.36

568 Tuition To Private Residential Rehabilitative Institutions (PRRI) [In-State] and Detention Centers

(749.95)

(749.95)

Total Other Purchased Services

\$3,621.41

\$3,621.41

Total 1441 Adjudicated / Court-Placed Programs

\$3,621.41

\$3,621.41

LEA : 113361303 Cocalico SD

Printed 12/14/2022 10:13:58 AM

General Fund (10)

1442 Alternative Education Programs

Elementary

Secondary

Federal

Total

500 Other Purchased Services

568 Tuition To Private Residential Rehabilitative Institutions (PRRI) [In-State] and Detention Centers

97,762.42

97,762.42

Total Other Purchased Services

\$97,762.42

\$97,762.42

Total 1442 Alternative Education Programs

\$97,762.42

\$97,762.42

General Fund (10)

1450 Instructional Programs Outside the Established School Day

	<u>Elementary</u>	<u>Secondary</u>	<u>Federal</u>	<u>Total</u>
100 Personnel Services – Salaries				
100 Personnel Services – Salaries	180.00		49,856.25	50,036.25
Total Personnel Services – Salaries	\$180.00		\$49,856.25	\$50,036.25
200 Personnel Services – Employee Benefits				
220 Social Security Contributions	13.60		3,688.47	3,702.07
230 PSERS Retirement Contributions	5,103.04	3,669.85	8,709.95	17,482.84
260 Workers’ Compensation	1.73		479.54	481.27
Total Personnel Services – Employee Benefits	\$5,118.37	\$3,669.85	\$12,877.96	\$21,666.18
500 Other Purchased Services				
510 Student Transportation Services			17,375.12	17,375.12
Total Other Purchased Services			\$17,375.12	\$17,375.12
800 Other Objects				
890 Miscellaneous Expenditures			6,336.00	6,336.00
Total Other Objects			\$6,336.00	\$6,336.00
Total 1450 Instructional Programs Outside the Established School Day	\$5,298.37	\$3,669.85	\$86,445.33	\$95,413.55

LEA : 113361303 Cocalico SD

Printed 12/14/2022 10:13:58 AM

General Fund (10)

1500 Nonpublic School Programs

Elementary

Secondary

Federal

Total

300 Purchased Professional and Technical Services

322 Professional Educational Services – lus

3,791.46

3,791.46

Total Purchased Professional and Technical Services

\$3,791.46

\$3,791.46

Total 1500 Nonpublic School Programs

\$3,791.46

\$3,791.46

General Fund (10)

2000 Support Services

Total

100 Personnel Services – Salaries

100 Personnel Services – Salaries 7,463,300.79

Total Personnel Services – Salaries

\$7,463,300.79

200 Personnel Services – Employee Benefits

210 Group Insurance – Contracted Provider 13,416.90

220 Social Security Contributions 547,220.79

230 PSERS Retirement Contributions 2,604,312.83

240 Tuition Reimbursement 244,341.02

260 Workers' Compensation 70,869.03

270 Group Insurance – Self-Insurance 1,970,693.56

291 Other Retirement Plans 115,503.35

299 All Other Employee Benefits 78,483.93

Total Personnel Services – Employee Benefits

\$5,644,841.41

300 Purchased Professional and Technical Services

310 Official / Administrative Services 67,073.21

322 Professional Educational Services – Ius 94,008.63

329 Professional Educational Services – Other 70,113.89

330 Other Professional Services 157,651.40

340 Technical Services 103,093.90

350 Security / Safety Services 83,399.76

360 Employee Training and Development Services 24,863.11

390 Other Purchased Professional and Technical Services 26,925.75

Total Purchased Professional and Technical Services

\$627,129.65

400 Purchased Property Services

410 Cleaning Services 40,970.00

420 Utility Services 67,116.89

430 Repairs and Maintenance Services 224,362.78

Total Purchased Property Services

\$332,449.67

500 Other Purchased Services

513 Contracted Carriers 2,621,346.10

519 Student Transportation Services From Other Sources 851.12

520 Insurance – General 673.00

521 Fire Insurance 89,781.00

522 Automotive Liability Insurance 10,111.00

523 General Property and Liability Insurance 10,248.00

529 Other Insurance 840.68

530 Communications 123,675.03

549 Other Advertising/Public Relations 9,019.51

550 Printing and Binding 36,530.85

580 Travel 18,307.49

595 IU Payments By Withholding 24,096.54

Total Other Purchased Services

\$2,945,480.32

600 Supplies

610 General Supplies 391,149.17

LEA : 113361303 Cocalico SD

Printed 12/14/2022 10:14:03 AM

General Fund (10)

2000 Support Services

Total

600 Supplies

620 Energy	658,937.75
630 Food	16,539.51
640 Books and Periodicals	39,590.51
650 Supplies & Fees – Technology Related	224,627.81

Total Supplies	\$1,330,844.75
-----------------------	-----------------------

700 Property

752 Capital Equipment – Original and Additional	10,419.01
762 Capitalized Equipment - Replacement	2,347.92
766 Capitalized Technology Equipment – Replacement	39,721.00
790 Other Property	310,084.00

Total Property	\$362,571.93
-----------------------	---------------------

800 Other Objects

810 Dues and Fees	28,980.13
890 Miscellaneous Expenditures	20,848.88

Total Other Objects	\$49,829.01
----------------------------	--------------------

Total 2000 Support Services	\$18,756,447.53
------------------------------------	------------------------

General Fund (10)

2100 Support Services – Students

100 Personnel Services – Salaries

	<u>Elementary</u>	<u>Secondary</u>	<u>Federal</u>	<u>Total</u>
100 Personnel Services – Salaries	835.01	274,372.36	921,762.58	1,337,717.75
Total Personnel Services – Salaries	\$835.01	\$274,372.36	\$921,762.58	\$1,337,717.75

200 Personnel Services – Employee Benefits

210 Group Insurance – Contracted Provider	1.18	402.02	1,386.00	1,965.60
220 Social Security Contributions	62.21	20,272.02	68,157.94	98,648.95
230 PSERS Retirement Contributions	1,036.15	244,151.93	161,031.93	467,202.36
260 Workers' Compensation	3.44	1,725.75	8,866.12	11,949.11
270 Group Insurance – Self-Insurance	170.49	55,492.75	217,753.48	316,866.62
Total Personnel Services – Employee Benefits	\$1,273.47	\$322,044.47	\$457,195.47	\$896,632.64

300 Purchased Professional and Technical Services

322 Professional Educational Services – lus	995.63		68,145.00	69,140.63
330 Other Professional Services	6,836.09	44,080.78	13,227.13	64,144.00
390 Other Purchased Professional and Technical Services	264.00	166.84		430.84
Total Purchased Professional and Technical Services	\$8,095.72	\$44,247.62	\$81,372.13	\$133,715.47

400 Purchased Property Services

430 Repairs and Maintenance Services	7.77	358.11		365.88
Total Purchased Property Services	\$7.77	\$358.11		\$365.88

500 Other Purchased Services

580 Travel	207.56	568.57		2,145.61
Total Other Purchased Services	\$207.56	\$568.57		\$2,145.61

600 Supplies

610 General Supplies	2,966.89	13,851.98		16,884.72
630 Food		336.09		336.09
640 Books and Periodicals	576.74	28.40		605.14
650 Supplies & Fees – Technology Related			7,656.32	7,656.32
Total Supplies	\$3,543.63	\$14,216.47	\$7,656.32	\$25,482.27

800 Other Objects

810 Dues and Fees	385.51	2,578.49		2,964.00
Total Other Objects	\$385.51	\$2,578.49		\$2,964.00

Total 2100 Support Services – Students

	\$14,348.67	\$658,386.09	\$1,467,986.50	\$2,399,023.62
--	--------------------	---------------------	-----------------------	-----------------------

General Fund (10)

2120 Guidance Services

	<u>Elementary</u>	<u>Secondary</u>	<u>Federal</u>	<u>Total</u>
100 Personnel Services – Salaries				
100 Personnel Services – Salaries	477.16	185,756.08	595,890.27	782,123.51
Total Personnel Services – Salaries	\$477.16	\$185,756.08	\$595,890.27	\$782,123.51
200 Personnel Services – Employee Benefits				
210 Group Insurance – Contracted Provider	0.63	251.37	882.00	1,134.00
220 Social Security Contributions	35.38	13,620.52	44,015.56	57,671.46
230 PSERS Retirement Contributions	685.65	168,319.36	104,102.08	273,107.09
260 Workers' Compensation		873.38	5,731.67	6,605.05
270 Group Insurance – Self-Insurance	86.52	34,521.08	141,578.36	176,185.96
Total Personnel Services – Employee Benefits	\$808.18	\$217,585.71	\$296,309.67	\$514,703.56
300 Purchased Professional and Technical Services				
330 Other Professional Services	6,808.89	38,667.98	13,227.13	58,704.00
390 Other Purchased Professional and Technical Services	264.00	166.84		430.84
Total Purchased Professional and Technical Services	\$7,072.89	\$38,834.82	\$13,227.13	\$59,134.84
400 Purchased Property Services				
430 Repairs and Maintenance Services		345.26		345.26
Total Purchased Property Services		\$345.26		\$345.26
500 Other Purchased Services				
580 Travel	2.86	568.57		571.43
Total Other Purchased Services	\$2.86	\$568.57		\$571.43
600 Supplies				
610 General Supplies	2,814.75	2,169.55		4,984.30
630 Food		336.09		336.09
640 Books and Periodicals	489.27	28.40		517.67
650 Supplies & Fees – Technology Related			7,656.32	7,656.32
Total Supplies	\$3,304.02	\$2,534.04	\$7,656.32	\$13,494.38
800 Other Objects				
810 Dues and Fees	378.64	1,211.36		1,590.00
Total Other Objects	\$378.64	\$1,211.36		\$1,590.00
Total 2120 Guidance Services	\$12,043.75	\$446,835.84	\$913,083.39	\$1,371,962.98

General Fund (10)

2140 Psychological Services

	<u>Elementary</u>	<u>Secondary</u>	<u>Federal</u>	<u>Total</u>
100 Personnel Services – Salaries				
100 Personnel Services – Salaries	357.85	88,616.28	258,299.00	347,273.13
Total Personnel Services – Salaries	\$357.85	\$88,616.28	\$258,299.00	\$347,273.13
200 Personnel Services – Employee Benefits				
210 Group Insurance – Contracted Provider	0.55	150.65	378.00	529.20
220 Social Security Contributions	26.83	6,651.50	19,050.76	25,729.09
230 PSERS Retirement Contributions	350.50	75,832.57	45,124.78	121,307.85
260 Workers' Compensation	3.44	852.37	2,484.49	3,340.30
270 Group Insurance – Self-Insurance	83.97	20,971.67	64,258.80	85,314.44
Total Personnel Services – Employee Benefits	\$465.29	\$104,458.76	\$131,296.83	\$236,220.88
300 Purchased Professional and Technical Services				
322 Professional Educational Services – lus	995.63		68,145.00	69,140.63
330 Other Professional Services	27.20	5,412.80		5,440.00
Total Purchased Professional and Technical Services	\$1,022.83	\$5,412.80	\$68,145.00	\$74,580.63
400 Purchased Property Services				
430 Repairs and Maintenance Services	7.77	12.85		20.62
Total Purchased Property Services	\$7.77	\$12.85		\$20.62
500 Other Purchased Services				
580 Travel	204.70			204.70
Total Other Purchased Services	\$204.70			\$204.70
600 Supplies				
610 General Supplies	152.14	11,682.43		11,834.57
640 Books and Periodicals	87.47			87.47
Total Supplies	\$239.61	\$11,682.43		\$11,922.04
800 Other Objects				
810 Dues and Fees	6.87	1,367.13		1,374.00
Total Other Objects	\$6.87	\$1,367.13		\$1,374.00
Total 2140 Psychological Services	\$2,304.92	\$211,550.25	\$457,740.83	\$671,596.00

General Fund (10)

2160 Social Work Services

100 Personnel Services – Salaries

	<u>Elementary</u>	<u>Secondary</u>	<u>Federal</u>	<u>Total</u>
100 Personnel Services – Salaries			67,573.31	150,956.31

Total Personnel Services – Salaries			\$67,573.31	\$150,956.31
--	--	--	--------------------	---------------------

200 Personnel Services – Employee Benefits

210 Group Insurance – Contracted Provider			126.00	252.00
---	--	--	--------	--------

220 Social Security Contributions			5,091.62	11,170.23
-----------------------------------	--	--	----------	-----------

230 PSERS Retirement Contributions			11,805.07	52,744.17
------------------------------------	--	--	-----------	-----------

260 Workers' Compensation			649.96	1,451.99
---------------------------	--	--	--------	----------

270 Group Insurance – Self-Insurance			11,916.32	38,062.42
--------------------------------------	--	--	-----------	-----------

Total Personnel Services – Employee Benefits			\$29,588.97	\$103,680.81
---	--	--	--------------------	---------------------

500 Other Purchased Services

580 Travel				1,369.48
------------	--	--	--	----------

Total Other Purchased Services				\$1,369.48
---------------------------------------	--	--	--	-------------------

600 Supplies

610 General Supplies				65.85
----------------------	--	--	--	-------

Total Supplies				\$65.85
-----------------------	--	--	--	----------------

Total 2160 Social Work Services			\$97,162.28	\$256,072.45
--	--	--	--------------------	---------------------

General Fund (10)

2170 Student Accounting Services

Elementary

Secondary

Federal

Total

100 Personnel Services – Salaries

100 Personnel Services – Salaries

57,364.80

Total Personnel Services – Salaries

\$57,364.80

200 Personnel Services – Employee Benefits

210 Group Insurance – Contracted Provider

50.40

220 Social Security Contributions

4,078.17

230 PSERS Retirement Contributions

20,043.25

260 Workers' Compensation

551.77

270 Group Insurance – Self-Insurance

17,303.80

Total Personnel Services – Employee Benefits

\$42,027.39

Total 2170 Student Accounting Services

\$99,392.19

General Fund (10)

2200 Support Services – Instructional Staff

	<u>Elementary</u>	<u>Secondary</u>	<u>Federal</u>	<u>Total</u>
100 Personnel Services – Salaries				
100 Personnel Services – Salaries	401,907.47	816,892.76	6,050.00	1,224,850.23
Total Personnel Services – Salaries	\$401,907.47	\$816,892.76	\$6,050.00	\$1,224,850.23
200 Personnel Services – Employee Benefits				
210 Group Insurance – Contracted Provider	462.03	1,192.77		1,654.80
220 Social Security Contributions	29,167.90	60,979.68	458.76	90,606.34
230 PSERS Retirement Contributions	150,225.57	285,904.34	1,056.92	437,186.83
240 Tuition Reimbursement	58,139.97	141,582.30	1,548.00	201,270.27
260 Workers' Compensation	3,865.82	7,857.41	58.19	11,781.42
270 Group Insurance – Self-Insurance	87,001.41	165,218.29		252,219.70
291 Other Retirement Plans	985.00	985.00		1,970.00
299 All Other Employee Benefits	51.46	10,239.92		10,291.38
Total Personnel Services – Employee Benefits	\$329,899.16	\$673,959.71	\$3,121.87	\$1,006,980.74
300 Purchased Professional and Technical Services				
322 Professional Educational Services – Ius	2,850.00			2,850.00
329 Professional Educational Services – Other	35,375.23	26,649.46	599.34	62,624.03
360 Employee Training and Development Services	2,510.00	3,904.00	5,348.00	11,762.00
Total Purchased Professional and Technical Services	\$40,735.23	\$30,553.46	\$5,947.34	\$77,236.03
400 Purchased Property Services				
430 Repairs and Maintenance Services	2,910.85	554.20		3,465.05
Total Purchased Property Services	\$2,910.85	\$554.20		\$3,465.05
500 Other Purchased Services				
550 Printing and Binding	0.18	34.82		35.00
580 Travel	205.57	1,230.33		1,435.90
Total Other Purchased Services	\$205.75	\$1,265.15		\$1,470.90
600 Supplies				
610 General Supplies	2,386.68	11,010.68		13,397.36
630 Food	2.94	586.05		588.99
640 Books and Periodicals	14,295.42	16,813.08	5,342.75	36,451.25
650 Supplies & Fees – Technology Related	11,469.80	42,063.48		53,533.28
Total Supplies	\$28,154.84	\$70,473.29	\$5,342.75	\$103,970.88
700 Property				
766 Capitalized Technology Equipment– Replacement	20.48	4,077.52		4,098.00
Total Property	\$20.48	\$4,077.52		\$4,098.00
800 Other Objects				
810 Dues and Fees	181.85	488.15		670.00
Total Other Objects	\$181.85	\$488.15		\$670.00
Total 2200 Support Services – Instructional Staff	\$804,015.63	\$1,598,264.24	\$20,461.96	\$2,422,741.83

General Fund (10)

2240 Computer-Assisted Instruction Support Services

	<u>Elementary</u>	<u>Secondary</u>	<u>Federal</u>	<u>Total</u>
100 Personnel Services – Salaries				
100 Personnel Services – Salaries	424.89	84,552.21		84,977.10
Total Personnel Services – Salaries	\$424.89	\$84,552.21		\$84,977.10
200 Personnel Services – Employee Benefits				
210 Group Insurance – Contracted Provider	0.63	125.37		126.00
220 Social Security Contributions	31.05	6,179.63		6,210.68
230 PSERS Retirement Contributions	148.46	29,542.53		29,690.99
260 Workers' Compensation	4.09	813.28		817.37
270 Group Insurance – Self-Insurance	136.35	27,133.95		27,270.30
Total Personnel Services – Employee Benefits	\$320.58	\$63,794.76		\$64,115.34
600 Supplies				
610 General Supplies	0.47	93.03		93.50
Total Supplies	\$0.47	\$93.03		\$93.50
Total 2240 Computer-Assisted Instruction Support Services	\$745.94	\$148,440.00		\$149,185.94

General Fund (10)

2250 School Library Services

	<u>Elementary</u>	<u>Secondary</u>	<u>Federal</u>	<u>Total</u>
100 Personnel Services – Salaries				
100 Personnel Services – Salaries	312,678.86	202,852.58		515,531.44
Total Personnel Services – Salaries	\$312,678.86	\$202,852.58		\$515,531.44
200 Personnel Services – Employee Benefits				
210 Group Insurance – Contracted Provider	457.80	352.80		810.60
220 Social Security Contributions	22,500.30	14,579.74		37,080.04
230 PSERS Retirement Contributions	118,503.69	70,846.32		189,350.01
260 Workers' Compensation	3,007.55	1,951.17		4,958.72
270 Group Insurance – Self-Insurance	86,518.98	69,215.18		155,734.16
Total Personnel Services – Employee Benefits	\$230,988.32	\$156,945.21		\$387,933.53
300 Purchased Professional and Technical Services				
329 Professional Educational Services – Other	7,011.02	3,146.00		10,157.02
Total Purchased Professional and Technical Services	\$7,011.02	\$3,146.00		\$10,157.02
400 Purchased Property Services				
430 Repairs and Maintenance Services	2,903.08	541.35		3,444.43
Total Purchased Property Services	\$2,903.08	\$541.35		\$3,444.43
500 Other Purchased Services				
580 Travel		58.64		58.64
Total Other Purchased Services		\$58.64		\$58.64
600 Supplies				
610 General Supplies	2,363.02	6,303.14		8,666.16
640 Books and Periodicals	14,281.11	16,609.56		30,890.67
650 Supplies & Fees – Technology Related	11,408.02	29,770.91		41,178.93
Total Supplies	\$28,052.15	\$52,683.61		\$80,735.76
800 Other Objects				
810 Dues and Fees	180.00	120.00		300.00
Total Other Objects	\$180.00	\$120.00		\$300.00
Total 2250 School Library Services	\$581,813.43	\$416,347.39		\$998,160.82

General Fund (10)

2260 Instruction and Curriculum Development Services

	<u>Elementary</u>	<u>Secondary</u>	<u>Federal</u>	<u>Total</u>
100 Personnel Services – Salaries				
100 Personnel Services – Salaries	46,655.52	377,115.17		423,770.69
Total Personnel Services – Salaries	\$46,655.52	\$377,115.17		\$423,770.69
200 Personnel Services – Employee Benefits				
210 Group Insurance – Contracted Provider	2.97	589.23		592.20
220 Social Security Contributions	3,458.90	28,600.38		32,059.28
230 PSERS Retirement Contributions	16,301.65	131,764.33		148,065.98
260 Workers' Compensation	448.76	3,627.33		4,076.09
270 Group Insurance – Self-Insurance	259.56	51,651.88		51,911.44
291 Other Retirement Plans	985.00	985.00		1,970.00
299 All Other Employee Benefits	31.07	6,182.58		6,213.65
Total Personnel Services – Employee Benefits	\$21,487.91	\$223,400.73		\$244,888.64
300 Purchased Professional and Technical Services				
329 Professional Educational Services – Other	22.64	4,504.63		4,527.27
Total Purchased Professional and Technical Services	\$22.64	\$4,504.63		\$4,527.27
400 Purchased Property Services				
430 Repairs and Maintenance Services	7.77	12.85		20.62
Total Purchased Property Services	\$7.77	\$12.85		\$20.62
500 Other Purchased Services				
550 Printing and Binding	0.18	34.82		35.00
580 Travel	4.64	923.18		927.82
Total Other Purchased Services	\$4.82	\$958.00		\$962.82
600 Supplies				
610 General Supplies	8.40	1,671.72		1,680.12
630 Food	0.52	104.48		105.00
640 Books and Periodicals	0.75	149.29	1,071.60	1,221.64
650 Supplies & Fees – Technology Related	2.92	580.32		583.24
Total Supplies	\$12.59	\$2,505.81	\$1,071.60	\$3,590.00
700 Property				
766 Capitalized Technology Equipment – Replacement	10.24	2,038.76		2,049.00
Total Property	\$10.24	\$2,038.76		\$2,049.00
800 Other Objects				
810 Dues and Fees	1.85	368.15		370.00
Total Other Objects	\$1.85	\$368.15		\$370.00
Total 2260 Instruction and Curriculum Development Services	\$68,203.34	\$610,904.10	\$1,071.60	\$680,179.04

General Fund (10)

2270 Instructional Staff Professional Development Services	<u>Elementary</u>	<u>Secondary</u>	<u>Federal</u>	<u>Total</u>
100 Personnel Services – Salaries				
100 Personnel Services – Salaries	41,620.30	47,319.70	6,050.00	94,990.00
Total Personnel Services – Salaries	\$41,620.30	\$47,319.70	\$6,050.00	\$94,990.00
200 Personnel Services – Employee Benefits				
220 Social Security Contributions	3,137.27	3,583.35	458.76	7,179.38
230 PSERS Retirement Contributions	15,087.32	17,045.53	1,056.92	33,189.77
240 Tuition Reimbursement	58,139.97	141,582.30	1,548.00	201,270.27
260 Workers' Compensation	400.34	455.16	58.19	913.69
Total Personnel Services – Employee Benefits	\$76,764.90	\$162,666.34	\$3,121.87	\$242,553.11
300 Purchased Professional and Technical Services				
322 Professional Educational Services – Ius	2,850.00			2,850.00
329 Professional Educational Services – Other	28,341.57	18,998.83	599.34	47,939.74
360 Employee Training and Development Services	2,510.00	3,904.00	5,348.00	11,762.00
Total Purchased Professional and Technical Services	\$33,701.57	\$22,902.83	\$5,947.34	\$62,551.74
500 Other Purchased Services				
580 Travel	200.93	248.51		449.44
Total Other Purchased Services	\$200.93	\$248.51		\$449.44
600 Supplies				
610 General Supplies	14.73	2,930.70		2,945.43
630 Food	2.42	481.57		483.99
640 Books and Periodicals	13.56	54.23	4,271.15	4,338.94
650 Supplies & Fees – Technology Related	56.94	11,330.92		11,387.86
Total Supplies	\$87.65	\$14,797.42	\$4,271.15	\$19,156.22
Total 2270 Instructional Staff Professional Development Services	\$152,375.35	\$247,934.80	\$19,390.36	\$419,700.51

General Fund (10)

	<u>Elementary</u>	<u>Secondary</u>	<u>Federal</u>	<u>Total</u>
2290 Other Instructional Staff Services				
100 Personnel Services – Salaries				
100 Personnel Services – Salaries	527.90	105,053.10		105,581.00
Total Personnel Services – Salaries	\$527.90	\$105,053.10		\$105,581.00
200 Personnel Services – Employee Benefits				
210 Group Insurance – Contracted Provider	0.63	125.37		126.00
220 Social Security Contributions	40.38	8,036.58		8,076.96
230 PSERS Retirement Contributions	184.45	36,705.63		36,890.08
260 Workers' Compensation	5.08	1,010.47		1,015.55
270 Group Insurance – Self-Insurance	86.52	17,217.28		17,303.80
299 All Other Employee Benefits	20.39	4,057.34		4,077.73
Total Personnel Services – Employee Benefits	\$337.45	\$67,152.67		\$67,490.12
600 Supplies				
610 General Supplies	0.06	12.09		12.15
650 Supplies & Fees – Technology Related	1.92	381.33		383.25
Total Supplies	\$1.98	\$393.42		\$395.40
700 Property				
766 Capitalized Technology Equipment– Replacement	10.24	2,038.76		2,049.00
Total Property	\$10.24	\$2,038.76		\$2,049.00
Total 2290 Other Instructional Staff Services	\$877.57	\$174,637.95		\$175,515.52

General Fund (10)

	<u>Elementary</u>	<u>Secondary</u>	<u>Federal</u>	<u>Total</u>
2300 Support Services – Administration				
100 Personnel Services – Salaries				
100 Personnel Services – Salaries	636,446.79	911,271.58		2,188,210.27
Total Personnel Services – Salaries	\$636,446.79	\$911,271.58		\$2,188,210.27
200 Personnel Services – Employee Benefits				
210 Group Insurance – Contracted Provider	1,806.00	2,385.60		5,520.90
220 Social Security Contributions	47,236.85	67,232.80		160,292.02
230 PSERS Retirement Contributions	222,337.93	315,192.73		761,318.38
260 Workers' Compensation	6,121.77	8,765.21		21,047.65
270 Group Insurance – Self-Insurance	190,341.73	259,556.87		553,721.36
291 Other Retirement Plans	7,340.70	87,784.35		104,491.07
299 All Other Employee Benefits	161.70	32,178.25		46,086.14
Total Personnel Services – Employee Benefits	\$475,346.68	\$773,095.81		\$1,652,477.52
300 Purchased Professional and Technical Services				
310 Official / Administrative Services				67,073.21
330 Other Professional Services				86,327.25
390 Other Purchased Professional and Technical Services				8,676.00
Total Purchased Professional and Technical Services				\$162,076.46
400 Purchased Property Services				
430 Repairs and Maintenance Services				1,075.45
Total Purchased Property Services				\$1,075.45
500 Other Purchased Services				
520 Insurance – General				673.00
530 Communications				253.30
549 Other Advertising/Public Relations				3,152.99
550 Printing and Binding	687.26	4,886.60		5,573.86
580 Travel	636.85	283.14		2,325.40
Total Other Purchased Services	\$1,324.11	\$5,169.74		\$11,978.55
600 Supplies				
610 General Supplies	8,623.54	21,259.03		46,143.54
630 Food	2,365.30	3,288.53		14,587.19
640 Books and Periodicals	1,587.84	29.98		2,534.12
650 Supplies & Fees – Technology Related	1,419.23	4,827.91		11,596.85
Total Supplies	\$13,995.91	\$29,405.45		\$74,861.70
700 Property				
766 Capitalized Technology Equipment– Replacement	8,196.00	10,245.00		25,917.00
Total Property	\$8,196.00	\$10,245.00		\$25,917.00
800 Other Objects				
810 Dues and Fees	2,963.00	2,454.00		23,911.46
Total Other Objects	\$2,963.00	\$2,454.00		\$23,911.46
Total 2300 Support Services – Administration	\$1,138,272.49	\$1,731,641.58		\$4,140,508.41

General Fund (10)

2310 Board Services

Elementary

Secondary

Federal

Total

300 Purchased Professional and Technical Services

330 Other Professional Services

50,485.00

Total Purchased Professional and Technical Services

\$50,485.00

500 Other Purchased Services

520 Insurance – General

203.00

549 Other Advertising/Public Relations

2,152.99

580 Travel

211.88

Total Other Purchased Services

\$2,567.87

600 Supplies

610 General Supplies

1,037.61

630 Food

2,148.81

650 Supplies & Fees – Technology Related

3,400.00

Total Supplies

\$6,586.42

800 Other Objects

810 Dues and Fees

14,136.13

Total Other Objects

\$14,136.13

Total 2310 Board Services

\$73,775.42

LEA : 113361303 Cocalico SD

Printed 12/14/2022 10:14:03 AM

General Fund (10)

2320 Board Treasurer Services

Elementary

Secondary

Federal

Total

500 Other Purchased Services

520 Insurance – General

470.00

Total Other Purchased Services

\$470.00

Total 2320 Board Treasurer Services

\$470.00

General Fund (10)

2330 Tax Assessment and Collection Services

Elementary

Secondary

Federal

Total

100 Personnel Services – Salaries

100 Personnel Services – Salaries

45,002.43

Total Personnel Services – Salaries

\$45,002.43

200 Personnel Services – Employee Benefits

210 Group Insurance – Contracted Provider

50.40

220 Social Security Contributions

3,227.71

230 PSERS Retirement Contributions

15,723.81

260 Workers' Compensation

432.86

270 Group Insurance – Self-Insurance

17,303.80

Total Personnel Services – Employee Benefits

\$36,738.58

300 Purchased Professional and Technical Services

310 Official / Administrative Services

67,073.21

Total Purchased Professional and Technical Services

\$67,073.21

600 Supplies

610 General Supplies

4,248.71

Total Supplies

\$4,248.71

Total 2330 Tax Assessment and Collection Services

\$153,062.93

General Fund (10)

2350 Legal and Accounting Services

Elementary

Secondary

Federal

Total

300 Purchased Professional and Technical Services

330 Other Professional Services

35,842.25

Total Purchased Professional and Technical Services

\$35,842.25

Total 2350 Legal and Accounting Services

\$35,842.25

General Fund (10)

2360 Office of the Superintendent / Executive Director Services

Elementary Secondary Federal Total

100 Personnel Services – Salaries				
100 Personnel Services – Salaries				570,432.00
Total Personnel Services – Salaries				\$570,432.00
200 Personnel Services – Employee Benefits				
210 Group Insurance – Contracted Provider				1,226.40
220 Social Security Contributions				40,672.39
230 PSERS Retirement Contributions				199,308.82
260 Workers' Compensation				5,486.79
270 Group Insurance – Self-Insurance				86,518.96
291 Other Retirement Plans				9,366.02
299 All Other Employee Benefits				12,233.19
Total Personnel Services – Employee Benefits				\$354,812.57
300 Purchased Professional and Technical Services				
390 Other Purchased Professional and Technical Services				8,676.00
Total Purchased Professional and Technical Services				\$8,676.00
400 Purchased Property Services				
430 Repairs and Maintenance Services				1,075.45
Total Purchased Property Services				\$1,075.45
500 Other Purchased Services				
549 Other Advertising/Public Relations				1,000.00
580 Travel				1,044.24
Total Other Purchased Services				\$2,044.24
600 Supplies				
610 General Supplies				4,600.37
630 Food				6,784.55
640 Books and Periodicals				916.30
650 Supplies & Fees – Technology Related				1,749.72
Total Supplies				\$14,050.94
700 Property				
766 Capitalized Technology Equipment – Replacement				7,476.00
Total Property				\$7,476.00
800 Other Objects				
810 Dues and Fees				4,358.33
Total Other Objects				\$4,358.33
Total 2360 Office of the Superintendent / Executive Director Services				\$962,925.53

General Fund (10)

2370 Community Relations Services

Elementary Secondary Federal Total

100 Personnel Services – Salaries

100 Personnel Services – Salaries 25,057.47

Total Personnel Services – Salaries **\$25,057.47**

200 Personnel Services – Employee Benefits

210 Group Insurance – Contracted Provider 52.50

220 Social Security Contributions 1,922.27

230 PSERS Retirement Contributions 8,755.09

260 Workers' Compensation 241.02

299 All Other Employee Benefits 1,513.00

Total Personnel Services – Employee Benefits **\$12,483.88**

500 Other Purchased Services

530 Communications 253.30

580 Travel 149.29

Total Other Purchased Services **\$402.59**

600 Supplies

610 General Supplies 120.00

650 Supplies & Fees – Technology Related 199.99

Total Supplies **\$319.99**

Total 2370 Community Relations Services **\$38,263.93**

General Fund (10)

2380 Office of the Principal Services

	<u>Elementary</u>	<u>Secondary</u>	<u>Federal</u>	<u>Total</u>
100 Personnel Services – Salaries				
100 Personnel Services – Salaries	636,446.79	911,271.58		1,547,718.37
Total Personnel Services – Salaries	\$636,446.79	\$911,271.58		\$1,547,718.37
200 Personnel Services – Employee Benefits				
210 Group Insurance – Contracted Provider	1,806.00	2,385.60		4,191.60
220 Social Security Contributions	47,236.85	67,232.80		114,469.65
230 PSERS Retirement Contributions	222,337.93	315,192.73		537,530.66
260 Workers' Compensation	6,121.77	8,765.21		14,886.98
270 Group Insurance – Self-Insurance	190,341.73	259,556.87		449,898.60
291 Other Retirement Plans	7,340.70	87,784.35		95,125.05
299 All Other Employee Benefits	161.70	32,178.25		32,339.95
Total Personnel Services – Employee Benefits	\$475,346.68	\$773,095.81		\$1,248,442.49
500 Other Purchased Services				
550 Printing and Binding	687.26	4,886.60		5,573.86
580 Travel	636.85	283.14		919.99
Total Other Purchased Services	\$1,324.11	\$5,169.74		\$6,493.85
600 Supplies				
610 General Supplies	8,623.54	21,259.03		29,882.57
630 Food	2,365.30	3,288.53		5,653.83
640 Books and Periodicals	1,587.84	29.98		1,617.82
650 Supplies & Fees – Technology Related	1,419.23	4,827.91		6,247.14
Total Supplies	\$13,995.91	\$29,405.45		\$43,401.36
700 Property				
766 Capitalized Technology Equipment – Replacement	8,196.00	10,245.00		18,441.00
Total Property	\$8,196.00	\$10,245.00		\$18,441.00
800 Other Objects				
810 Dues and Fees	2,963.00	2,454.00		5,417.00
Total Other Objects	\$2,963.00	\$2,454.00		\$5,417.00
Total 2380 Office of the Principal Services	\$1,138,272.49	\$1,731,641.58		\$2,869,914.07

General Fund (10)

2390 Other Administration Services

Elementary

Secondary

Federal

Total

600 Supplies

610 General Supplies

6,254.28

Total Supplies

\$6,254.28

Total 2390 Other Administration Services

\$6,254.28

General Fund (10)

	<u>Elementary</u>	<u>Secondary</u>	<u>Federal</u>	<u>Total</u>
2400 Support Services – Pupil Health				
100 Personnel Services – Salaries				
100 Personnel Services – Salaries				384,522.15
Total Personnel Services – Salaries				\$384,522.15
200 Personnel Services – Employee Benefits				
210 Group Insurance – Contracted Provider				604.80
220 Social Security Contributions				27,210.33
230 PSERS Retirement Contributions				142,596.22
260 Workers' Compensation				3,698.59
270 Group Insurance – Self-Insurance				121,126.59
Total Personnel Services – Employee Benefits				\$295,236.53
300 Purchased Professional and Technical Services				
329 Professional Educational Services – Other				7,489.86
330 Other Professional Services				161.00
Total Purchased Professional and Technical Services				\$7,650.86
400 Purchased Property Services				
430 Repairs and Maintenance Services				37.76
Total Purchased Property Services				\$37.76
600 Supplies				
610 General Supplies				5,501.01
Total Supplies				\$5,501.01
700 Property				
762 Capitalized Equipment - Replacement				2,347.92
Total Property				\$2,347.92
800 Other Objects				
810 Dues and Fees				130.00
Total Other Objects				\$130.00
Total 2400 Support Services – Pupil Health				\$695,426.23

General Fund (10)

2420 Medical Services

Elementary

Secondary

Federal

Total

300 Purchased Professional and Technical Services

330 Other Professional Services

161.00

Total Purchased Professional and Technical Services

\$161.00

600 Supplies

610 General Supplies

4,693.98

Total Supplies

\$4,693.98

Total 2420 Medical Services

\$4,854.98

LEA : 113361303 Cocalico SD

Printed 12/14/2022 10:14:03 AM

General Fund (10)

2430 Dental Services

Elementary

Secondary

Federal

Total

600 Supplies

610 General Supplies

185.74

Total Supplies				\$185.74
Total 2430 Dental Services				\$185.74

General Fund (10)

2440 Nursing Services

	<u>Elementary</u>	<u>Secondary</u>	<u>Federal</u>	<u>Total</u>
100 Personnel Services – Salaries				
100 Personnel Services – Salaries				384,522.15
Total Personnel Services – Salaries				\$384,522.15
200 Personnel Services – Employee Benefits				
210 Group Insurance – Contracted Provider				604.80
220 Social Security Contributions				27,210.33
230 PSERS Retirement Contributions				142,596.22
260 Workers' Compensation				3,698.59
270 Group Insurance – Self-Insurance				121,126.59
Total Personnel Services – Employee Benefits				\$295,236.53
300 Purchased Professional and Technical Services				
329 Professional Educational Services – Other				7,489.86
Total Purchased Professional and Technical Services				\$7,489.86
400 Purchased Property Services				
430 Repairs and Maintenance Services				37.76
Total Purchased Property Services				\$37.76
600 Supplies				
610 General Supplies				621.29
Total Supplies				\$621.29
700 Property				
762 Capitalized Equipment - Replacement				2,347.92
Total Property				\$2,347.92
800 Other Objects				
810 Dues and Fees				130.00
Total Other Objects				\$130.00
Total 2440 Nursing Services				\$690,385.51

General Fund (10)

2500 Support Services – Business

Elementary Secondary Federal Total

100 Personnel Services – Salaries

100 Personnel Services – Salaries 387,026.67

Total Personnel Services – Salaries \$387,026.67

200 Personnel Services – Employee Benefits

210 Group Insurance – Contracted Provider 655.20

220 Social Security Contributions 28,665.94

230 PSERS Retirement Contributions 134,194.95

260 Workers' Compensation 3,722.68

270 Group Insurance – Self-Insurance 86,518.97

291 Other Retirement Plans 2,886.78

299 All Other Employee Benefits 6,898.65

Total Personnel Services – Employee Benefits \$263,543.17

300 Purchased Professional and Technical Services

340 Technical Services 27,577.95

Total Purchased Professional and Technical Services \$27,577.95

400 Purchased Property Services

430 Repairs and Maintenance Services 4,073.17

Total Purchased Property Services \$4,073.17

500 Other Purchased Services

530 Communications 37,390.56

580 Travel 646.01

Total Other Purchased Services \$38,036.57

600 Supplies

610 General Supplies 3,584.29

630 Food 112.77

650 Supplies & Fees – Technology Related 3,198.65

Total Supplies \$6,895.71

800 Other Objects

810 Dues and Fees 460.20

890 Miscellaneous Expenditures 17,552.20

Total Other Objects \$18,012.40

Total 2500 Support Services – Business \$745,165.64

General Fund (10)

2510 Fiscal Services

Elementary

Secondary

Federal

Total

100 Personnel Services – Salaries

100 Personnel Services – Salaries

387,026.67

Total Personnel Services – Salaries

\$387,026.67

200 Personnel Services – Employee Benefits

210 Group Insurance – Contracted Provider

655.20

220 Social Security Contributions

28,665.94

230 PSERS Retirement Contributions

134,194.95

260 Workers' Compensation

3,722.68

270 Group Insurance – Self-Insurance

86,518.97

291 Other Retirement Plans

2,886.78

299 All Other Employee Benefits

6,898.65

Total Personnel Services – Employee Benefits

\$263,543.17

300 Purchased Professional and Technical Services

340 Technical Services

27,577.95

Total Purchased Professional and Technical Services

\$27,577.95

400 Purchased Property Services

430 Repairs and Maintenance Services

4,073.17

Total Purchased Property Services

\$4,073.17

500 Other Purchased Services

530 Communications

37,390.56

580 Travel

646.01

Total Other Purchased Services

\$38,036.57

600 Supplies

610 General Supplies

3,584.29

630 Food

112.77

650 Supplies & Fees – Technology Related

3,198.65

Total Supplies

\$6,895.71

800 Other Objects

810 Dues and Fees

460.20

890 Miscellaneous Expenditures

17,552.20

Total Other Objects

\$18,012.40

Total 2510 Fiscal Services

\$745,165.64

General Fund (10)

2511 Supervision of Fiscal Services - Head of Component

	<u>Elementary</u>	<u>Secondary</u>	<u>Federal</u>	<u>Total</u>
100 Personnel Services – Salaries				
100 Personnel Services – Salaries				234,259.00
Total Personnel Services – Salaries				\$234,259.00
200 Personnel Services – Employee Benefits				
210 Group Insurance – Contracted Provider				504.00
220 Social Security Contributions				17,828.83
230 PSERS Retirement Contributions				81,850.00
260 Workers' Compensation				2,253.26
270 Group Insurance – Self-Insurance				34,607.59
291 Other Retirement Plans				2,886.78
299 All Other Employee Benefits				6,898.65
Total Personnel Services – Employee Benefits				\$146,829.11
500 Other Purchased Services				
580 Travel				638.28
Total Other Purchased Services				\$638.28
800 Other Objects				
810 Dues and Fees				460.20
Total Other Objects				\$460.20
Total 2511 Supervision of Fiscal Services - Head of Component				\$382,186.59

General Fund (10)

2515 Financial Accounting Services

Elementary Secondary Federal Total

100 Personnel Services – Salaries

100 Personnel Services – Salaries 152,767.67

Total Personnel Services – Salaries \$152,767.67

200 Personnel Services – Employee Benefits

210 Group Insurance – Contracted Provider 151.20

220 Social Security Contributions 10,837.11

230 PSERS Retirement Contributions 52,344.95

260 Workers' Compensation 1,469.42

270 Group Insurance – Self-Insurance 51,911.38

Total Personnel Services – Employee Benefits \$116,714.06

300 Purchased Professional and Technical Services

340 Technical Services 27,577.95

Total Purchased Professional and Technical Services \$27,577.95

400 Purchased Property Services

430 Repairs and Maintenance Services 4,073.17

Total Purchased Property Services \$4,073.17

500 Other Purchased Services

530 Communications 37,390.56

580 Travel 7.73

Total Other Purchased Services \$37,398.29

600 Supplies

610 General Supplies 3,584.29

630 Food 112.77

650 Supplies & Fees – Technology Related 3,198.65

Total Supplies \$6,895.71

800 Other Objects

890 Miscellaneous Expenditures 17,552.20

Total Other Objects \$17,552.20

Total 2515 Financial Accounting Services \$362,979.05

LEA : 113361303 Cocalico SD

Printed 12/14/2022 10:14:03 AM

General Fund (10)

2600 Operation and Maintenance of Plant Services

Elementary

Secondary

Federal

Total

100 Personnel Services – Salaries

100 Personnel Services – Salaries

1,232,940.94

Total Personnel Services – Salaries

\$1,232,940.94

200 Personnel Services – Employee Benefits

210 Group Insurance – Contracted Provider

1,743.00

220 Social Security Contributions

88,977.54

230 PSERS Retirement Contributions

424,291.47

260 Workers' Compensation

11,859.25

270 Group Insurance – Self-Insurance

467,202.40

291 Other Retirement Plans

2,015.42

299 All Other Employee Benefits

4,077.73

Total Personnel Services – Employee Benefits

\$1,000,166.81

300 Purchased Professional and Technical Services

322 Professional Educational Services – lus

500.00

350 Security / Safety Services

83,399.76

390 Other Purchased Professional and Technical Services

17,056.91

Total Purchased Professional and Technical Services

\$100,956.67

400 Purchased Property Services

410 Cleaning Services

40,970.00

420 Utility Services

67,116.89

430 Repairs and Maintenance Services

210,637.79

Total Purchased Property Services

\$318,724.68

500 Other Purchased Services

521 Fire Insurance

89,781.00

522 Automotive Liability Insurance

10,111.00

523 General Property and Liability Insurance

10,248.00

529 Other Insurance

840.68

530 Communications

81,719.90

580 Travel

193.69

Total Other Purchased Services

\$192,894.27

600 Supplies

610 General Supplies

54,758.24

245,996.08

300,754.32

620 Energy

658,937.75

630 Food

310.00

650 Supplies & Fees – Technology Related

5,299.42

Total Supplies

\$54,758.24

\$245,996.08

\$965,301.49

700 Property

752 Capital Equipment – Original and Additional

10,419.01

790 Other Property

310,084.00

Total Property

\$320,503.01

800 Other Objects

LEA : 113361303 Cocalico SD

Printed 12/14/2022 10:14:03 AM

General Fund (10)

2600 Operation and Maintenance of Plant Services

Elementary

Secondary

Federal

Total

800 Other Objects

810 Dues and Fees

114.28

890 Miscellaneous Expenditures

3,296.68

Total Other Objects

\$3,410.96

Total 2600 Operation and Maintenance of Plant Services

\$54,758.24

\$245,996.08

\$4,134,898.83

General Fund (10)

	<u>Elementary</u>	<u>Secondary</u>	<u>Federal</u>	<u>Total</u>
2610 Supervision of Operation and Maintenance of Plant Services				
100 <u>Personnel Services – Salaries</u>				
100 Personnel Services – Salaries				142,615.07
Total Personnel Services – Salaries				\$142,615.07
200 <u>Personnel Services – Employee Benefits</u>				
210 Group Insurance – Contracted Provider				428.40
220 Social Security Contributions				10,690.37
230 PSERS Retirement Contributions				49,011.73
260 Workers' Compensation				1,371.77
270 Group Insurance – Self-Insurance				34,607.59
291 Other Retirement Plans				2,015.42
299 All Other Employee Benefits				4,077.73
Total Personnel Services – Employee Benefits				\$102,203.01
400 <u>Purchased Property Services</u>				
430 Repairs and Maintenance Services				26.25
Total Purchased Property Services				\$26.25
600 <u>Supplies</u>				
610 General Supplies	2.93	583.17		586.10
630 Food				310.00
650 Supplies & Fees – Technology Related				4,830.00
Total Supplies	\$2.93	\$583.17		\$5,726.10
800 <u>Other Objects</u>				
810 Dues and Fees				114.28
Total Other Objects				\$114.28
Total 2610 Supervision of Operation and Maintenance of Plant Services	\$2.93	\$583.17		\$250,684.71

General Fund (10)

2611 Supervision of Operation and Maintenance of Plant Services – Head of Component

	<u>Elementary</u>	<u>Secondary</u>	<u>Federal</u>	<u>Total</u>
100 Personnel Services – Salaries				
100 Personnel Services – Salaries				142,615.07
Total Personnel Services – Salaries				\$142,615.07
200 Personnel Services – Employee Benefits				
210 Group Insurance – Contracted Provider				428.40
220 Social Security Contributions				10,690.37
230 PSERS Retirement Contributions				49,011.73
260 Workers' Compensation				1,371.77
270 Group Insurance – Self-Insurance				34,607.59
291 Other Retirement Plans				2,015.42
299 All Other Employee Benefits				4,077.73
Total Personnel Services – Employee Benefits				\$102,203.01
400 Purchased Property Services				
430 Repairs and Maintenance Services				26.25
Total Purchased Property Services				\$26.25
600 Supplies				
610 General Supplies	2.93	583.17		586.10
630 Food				310.00
650 Supplies & Fees – Technology Related				4,830.00
Total Supplies	\$2.93	\$583.17		\$5,726.10
800 Other Objects				
810 Dues and Fees				114.28
Total Other Objects				\$114.28
Total 2611 Supervision of Operation and Maintenance of Plant Services – Head of Component	\$2.93	\$583.17		\$250,684.71

General Fund (10)

2620 Operation of Buildings Services

100 Personnel Services – Salaries

100 Personnel Services – Salaries				1,090,325.87
-----------------------------------	--	--	--	--------------

Total Personnel Services – Salaries				\$1,090,325.87
--	--	--	--	-----------------------

200 Personnel Services – Employee Benefits

210 Group Insurance – Contracted Provider				1,314.60
---	--	--	--	----------

220 Social Security Contributions				78,287.17
-----------------------------------	--	--	--	-----------

230 PSERS Retirement Contributions				375,279.74
------------------------------------	--	--	--	------------

260 Workers' Compensation				10,487.48
---------------------------	--	--	--	-----------

270 Group Insurance – Self-Insurance				432,594.81
--------------------------------------	--	--	--	------------

Total Personnel Services – Employee Benefits				\$897,963.80
---	--	--	--	---------------------

400 Purchased Property Services

410 Cleaning Services				40,970.00
-----------------------	--	--	--	-----------

420 Utility Services				67,116.89
----------------------	--	--	--	-----------

430 Repairs and Maintenance Services				210,611.54
--------------------------------------	--	--	--	------------

Total Purchased Property Services				\$318,698.43
--	--	--	--	---------------------

500 Other Purchased Services

521 Fire Insurance				89,781.00
--------------------	--	--	--	-----------

522 Automotive Liability Insurance				10,111.00
------------------------------------	--	--	--	-----------

523 General Property and Liability Insurance				10,248.00
--	--	--	--	-----------

529 Other Insurance				840.68
---------------------	--	--	--	--------

530 Communications				81,719.90
--------------------	--	--	--	-----------

580 Travel				193.69
------------	--	--	--	--------

Total Other Purchased Services				\$192,894.27
---------------------------------------	--	--	--	---------------------

600 Supplies

610 General Supplies	54,733.32	241,036.40		295,769.72
----------------------	-----------	------------	--	------------

620 Energy				658,937.75
------------	--	--	--	------------

650 Supplies & Fees – Technology Related				469.42
--	--	--	--	--------

Total Supplies	\$54,733.32	\$241,036.40		\$955,176.89
-----------------------	--------------------	---------------------	--	---------------------

700 Property

752 Capital Equipment – Original and Additional				10,419.01
---	--	--	--	-----------

790 Other Property				310,084.00
--------------------	--	--	--	------------

Total Property				\$320,503.01
-----------------------	--	--	--	---------------------

800 Other Objects

890 Miscellaneous Expenditures				3,296.68
--------------------------------	--	--	--	----------

Total Other Objects				\$3,296.68
----------------------------	--	--	--	-------------------

Total 2620 Operation of Buildings Services	\$54,733.32	\$241,036.40		\$3,778,858.95
---	--------------------	---------------------	--	-----------------------

General Fund (10)

2660 Safety and Security Services

300 Purchased Professional and Technical Services

	<u>Elementary</u>	<u>Secondary</u>	<u>Federal</u>	<u>Total</u>
322 Professional Educational Services – Ius				500.00
350 Security / Safety Services				83,399.76
390 Other Purchased Professional and Technical Services				17,056.91

Total Purchased Professional and Technical Services				\$100,956.67
--	--	--	--	---------------------

600 Supplies

610 General Supplies	21.99	4,376.51		4,398.50
----------------------	-------	----------	--	----------

Total Supplies	\$21.99	\$4,376.51		\$4,398.50
-----------------------	----------------	-------------------	--	-------------------

Total 2660 Safety and Security Services	\$21.99	\$4,376.51		\$105,355.17
--	----------------	-------------------	--	---------------------

General Fund (10)

2700 Student Transportation Services

Elementary Secondary Federal Total

100 Personnel Services – Salaries

100 Personnel Services – Salaries 63,966.42

Total Personnel Services – Salaries \$63,966.42

200 Personnel Services – Employee Benefits

210 Group Insurance – Contracted Provider 88.20

220 Social Security Contributions 4,716.55

230 PSERS Retirement Contributions 22,349.88

260 Workers' Compensation 615.27

270 Group Insurance – Self-Insurance 17,303.79

299 All Other Employee Benefits 1,410.46

Total Personnel Services – Employee Benefits \$46,484.15

400 Purchased Property Services

430 Repairs and Maintenance Services 4,674.26

Total Purchased Property Services \$4,674.26

500 Other Purchased Services

513 Contracted Carriers 2,621,346.10

519 Student Transportation Services From Other Sources 851.12

580 Travel 30.20

Total Other Purchased Services \$2,622,227.42

600 Supplies

610 General Supplies 2,783.59

630 Food 434.00

Total Supplies \$3,217.59

800 Other Objects

810 Dues and Fees 114.28

Total Other Objects \$114.28

Total 2700 Student Transportation Services \$2,740,684.12

General Fund (10)

2710 Supervision of Student Transportation Services

Elementary

Secondary

Federal

Total

100 Personnel Services – Salaries

100 Personnel Services – Salaries

63,966.42

Total Personnel Services – Salaries

\$63,966.42

200 Personnel Services – Employee Benefits

210 Group Insurance – Contracted Provider

88.20

220 Social Security Contributions

4,716.55

230 PSERS Retirement Contributions

22,349.88

260 Workers' Compensation

615.27

270 Group Insurance – Self-Insurance

17,303.79

299 All Other Employee Benefits

1,410.46

Total Personnel Services – Employee Benefits

\$46,484.15

400 Purchased Property Services

430 Repairs and Maintenance Services

4,674.26

Total Purchased Property Services

\$4,674.26

500 Other Purchased Services

580 Travel

30.20

Total Other Purchased Services

\$30.20

600 Supplies

610 General Supplies

2,783.59

630 Food

434.00

Total Supplies

\$3,217.59

800 Other Objects

810 Dues and Fees

114.28

Total Other Objects

\$114.28

Total 2710 Supervision of Student Transportation Services

\$118,486.90

General Fund (10)

2711 Supervision of Student Transportation Services – Head of Component

	<u>Elementary</u>	<u>Secondary</u>	<u>Federal</u>	<u>Total</u>
100 Personnel Services – Salaries				
100 Personnel Services – Salaries				63,966.42
Total Personnel Services – Salaries				\$63,966.42
200 Personnel Services – Employee Benefits				
210 Group Insurance – Contracted Provider				88.20
220 Social Security Contributions				4,716.55
230 PSERS Retirement Contributions				22,349.88
260 Workers' Compensation				615.27
270 Group Insurance – Self-Insurance				17,303.79
299 All Other Employee Benefits				1,410.46
Total Personnel Services – Employee Benefits				\$46,484.15
400 Purchased Property Services				
430 Repairs and Maintenance Services				4,674.26
Total Purchased Property Services				\$4,674.26
500 Other Purchased Services				
580 Travel				30.20
Total Other Purchased Services				\$30.20
600 Supplies				
610 General Supplies				2,783.59
630 Food				434.00
Total Supplies				\$3,217.59
800 Other Objects				
810 Dues and Fees				114.28
Total Other Objects				\$114.28
Total 2711 Supervision of Student Transportation Services – Head of Component				\$118,486.90

LEA : 113361303 Cocalico SD

Printed 12/14/2022 10:14:03 AM

General Fund (10)

2720 Vehicle Operation Services

Elementary

Secondary

Federal

Total

500 Other Purchased Services

513 Contracted Carriers

2,464,652.59

519 Student Transportation Services From Other Sources

851.12

Total Other Purchased Services

\$2,465,503.71

Total 2720 Vehicle Operation Services

\$2,465,503.71

LEA : 113361303 Cocalico SD

Printed 12/14/2022 10:14:03 AM

General Fund (10)

2750 Nonpublic Transportation

Elementary

Secondary

Federal

Total

500 Other Purchased Services

513 Contracted Carriers

156,693.51

Total Other Purchased Services

\$156,693.51

Total 2750 Nonpublic Transportation

\$156,693.51

General Fund (10)

2800 Support Services – Central

	<u>Elementary</u>	<u>Secondary</u>	<u>Federal</u>	<u>Total</u>
100 Personnel Services – Salaries				
100 Personnel Services – Salaries				644,066.36
Total Personnel Services – Salaries				\$644,066.36
200 Personnel Services – Employee Benefits				
210 Group Insurance – Contracted Provider				1,184.40
220 Social Security Contributions				48,103.12
230 PSERS Retirement Contributions				215,172.74
240 Tuition Reimbursement			1,590.00	43,070.75
260 Workers' Compensation				6,195.06
270 Group Insurance – Self-Insurance				155,734.13
291 Other Retirement Plans				4,140.08
299 All Other Employee Benefits				9,719.57
Total Personnel Services – Employee Benefits			\$1,590.00	\$483,319.85
300 Purchased Professional and Technical Services				
322 Professional Educational Services – Ius				21,518.00
330 Other Professional Services				7,019.15
340 Technical Services				75,515.95
360 Employee Training and Development Services				13,101.11
390 Other Purchased Professional and Technical Services				762.00
Total Purchased Professional and Technical Services				\$117,916.21
400 Purchased Property Services				
430 Repairs and Maintenance Services				33.42
Total Purchased Property Services				\$33.42
500 Other Purchased Services				
530 Communications				4,311.27
549 Other Advertising/Public Relations				5,866.52
550 Printing and Binding				30,921.99
580 Travel				11,530.68
Total Other Purchased Services				\$52,630.46
600 Supplies				
610 General Supplies				2,100.34
630 Food				170.47
650 Supplies & Fees – Technology Related				143,343.29
Total Supplies				\$145,614.10
700 Property				
766 Capitalized Technology Equipment – Replacement				9,706.00
Total Property				\$9,706.00
800 Other Objects				
810 Dues and Fees				615.91
Total Other Objects				\$615.91
Total 2800 Support Services – Central			\$1,590.00	\$1,453,902.31

General Fund (10)

2810 Planning, Research, Development and Evaluation Services

Elementary

Secondary

Federal

Total

100 Personnel Services – Salaries				
100 Personnel Services – Salaries				463,921.80
Total Personnel Services – Salaries				\$463,921.80
200 Personnel Services – Employee Benefits				
210 Group Insurance – Contracted Provider				756.00
220 Social Security Contributions				34,460.56
230 PSERS Retirement Contributions				155,590.26
260 Workers' Compensation				4,462.31
270 Group Insurance – Self-Insurance				121,126.54
291 Other Retirement Plans				1,978.28
299 All Other Employee Benefits				6,898.65
Total Personnel Services – Employee Benefits				\$325,272.60
300 Purchased Professional and Technical Services				
322 Professional Educational Services – Ius				21,518.00
340 Technical Services				75,515.95
Total Purchased Professional and Technical Services				\$97,033.95
400 Purchased Property Services				
430 Repairs and Maintenance Services				33.42
Total Purchased Property Services				\$33.42
500 Other Purchased Services				
530 Communications				1,310.65
580 Travel				1,469.01
Total Other Purchased Services				\$2,779.66
600 Supplies				
610 General Supplies				567.18
630 Food				24.00
650 Supplies & Fees – Technology Related				134,381.52
Total Supplies				\$134,972.70
700 Property				
766 Capitalized Technology Equipment – Replacement				9,706.00
Total Property				\$9,706.00
800 Other Objects				
810 Dues and Fees				114.28
Total Other Objects				\$114.28
Total 2810 Planning, Research, Development and Evaluation Services				\$1,033,834.41

LEA : 113361303 Cocalico SD

Printed 12/14/2022 10:14:03 AM

General Fund (10)

2820 Information Services

Elementary

Secondary

Federal

Total

500 Other Purchased Services

530 Communications

3,000.62

550 Printing and Binding

30,921.99

Total Other Purchased Services

\$33,922.61

Total 2820 Information Services

\$33,922.61

LEA : 113361303 Cocalico SD

Printed 12/14/2022 10:14:03 AM

General Fund (10)

2823 Public Information Services

Elementary

Secondary

Federal

Total

500 Other Purchased Services

530 Communications

3,000.62

550 Printing and Binding

30,921.99

Total Other Purchased Services

\$33,922.61

Total 2823 Public Information Services

\$33,922.61

General Fund (10)

2830 Staff Services

	<u>Elementary</u>	<u>Secondary</u>	<u>Federal</u>	<u>Total</u>
100 Personnel Services – Salaries				
100 Personnel Services – Salaries				180,144.56
Total Personnel Services – Salaries				\$180,144.56
200 Personnel Services – Employee Benefits				
210 Group Insurance – Contracted Provider				428.40
220 Social Security Contributions				13,642.56
230 PSERS Retirement Contributions				59,582.48
240 Tuition Reimbursement			1,590.00	43,070.75
260 Workers' Compensation				1,732.75
270 Group Insurance – Self-Insurance				34,607.59
291 Other Retirement Plans				2,161.80
299 All Other Employee Benefits				2,820.92
Total Personnel Services – Employee Benefits			\$1,590.00	\$158,047.25
300 Purchased Professional and Technical Services				
330 Other Professional Services				7,019.15
360 Employee Training and Development Services				13,101.11
390 Other Purchased Professional and Technical Services				762.00
Total Purchased Professional and Technical Services				\$20,882.26
500 Other Purchased Services				
549 Other Advertising/Public Relations				5,866.52
580 Travel				10,061.67
Total Other Purchased Services				\$15,928.19
600 Supplies				
610 General Supplies				1,533.16
630 Food				146.47
650 Supplies & Fees – Technology Related				8,961.77
Total Supplies				\$10,641.40
800 Other Objects				
810 Dues and Fees				501.63
Total Other Objects				\$501.63
Total 2830 Staff Services			\$1,590.00	\$386,145.29

General Fund (10)

2831 Supervision of Staff Services

Elementary

Secondary

Federal

Total

100 Personnel Services – Salaries

100 Personnel Services – Salaries

170,528.31

Total Personnel Services – Salaries

\$170,528.31

200 Personnel Services – Employee Benefits

210 Group Insurance – Contracted Provider

428.40

220 Social Security Contributions

12,906.91

230 PSERS Retirement Contributions

59,582.48

260 Workers' Compensation

1,640.25

270 Group Insurance – Self-Insurance

34,607.59

291 Other Retirement Plans

2,161.80

299 All Other Employee Benefits

2,820.92

Total Personnel Services – Employee Benefits

\$114,148.35

300 Purchased Professional and Technical Services

390 Other Purchased Professional and Technical Services

762.00

Total Purchased Professional and Technical Services

\$762.00

500 Other Purchased Services

549 Other Advertising/Public Relations

5,866.52

580 Travel

24.19

Total Other Purchased Services

\$5,890.71

600 Supplies

610 General Supplies

1,533.16

630 Food

146.47

650 Supplies & Fees – Technology Related

8,961.77

Total Supplies

\$10,641.40

800 Other Objects

810 Dues and Fees

501.63

Total Other Objects

\$501.63

Total 2831 Supervision of Staff Services

\$302,472.40

General Fund (10)

2834 Staff Development Services – Non-Instructional, Certified Staff Only

Elementary

Secondary

Federal

Total

200 Personnel Services – Employee Benefits

240 Tuition Reimbursement

1,590.00

43,070.75

Total Personnel Services – Employee Benefits

\$1,590.00

\$43,070.75

300 Purchased Professional and Technical Services

360 Employee Training and Development Services

8,249.42

Total Purchased Professional and Technical Services

\$8,249.42

500 Other Purchased Services

580 Travel

9,265.33

Total Other Purchased Services

\$9,265.33

Total 2834 Staff Development Services – Non-Instructional, Certified Staff Only

\$1,590.00

\$60,585.50

LEA : 113361303 Cocalico SD

Printed 12/14/2022 10:14:03 AM

General Fund (10)

2835 Health Services

Elementary

Secondary

Federal

Total

300 Purchased Professional and Technical Services

330 Other Professional Services

7,019.15

Total Purchased Professional and Technical Services

\$7,019.15

Total 2835 Health Services

\$7,019.15

General Fund (10)

2836 Staff Development Services – Non-Instructional, Non-Certified Staff Only

	<u>Elementary</u>	<u>Secondary</u>	<u>Federal</u>	<u>Total</u>
100 Personnel Services – Salaries				
100 Personnel Services – Salaries				9,616.25
Total Personnel Services – Salaries				\$9,616.25
200 Personnel Services – Employee Benefits				
220 Social Security Contributions				735.65
260 Workers' Compensation				92.50
Total Personnel Services – Employee Benefits				\$828.15
300 Purchased Professional and Technical Services				
360 Employee Training and Development Services				4,851.69
Total Purchased Professional and Technical Services				\$4,851.69
500 Other Purchased Services				
580 Travel				772.15
Total Other Purchased Services				\$772.15
Total 2836 Staff Development Services – Non-Instructional, Non-Certified Staff Only				\$16,068.24

LEA : 113361303 Cocalico SD

Printed 12/14/2022 10:14:03 AM

General Fund (10)

2900 Other Support Services

Elementary

Secondary

Federal

Total

500 Other Purchased Services

595 IU Payments By Withholding

24,096.54

Total Other Purchased Services

\$24,096.54

Total 2900 Other Support Services

\$24,096.54

General Fund (10)

2910 Support Services Not Listed Elsewhere In the 2000 Series

Elementary

Secondary

Federal

Total

500 Other Purchased Services

595 IU Payments By Withholding

24,096.54

Total Other Purchased Services

\$24,096.54

Total 2910 Support Services Not Listed Elsewhere In the 2000 Series

\$24,096.54

General Fund (10)

	<u>Total</u>
3000 Operation of Non-Instructional Services	
100 Personnel Services – Salaries	
100 Personnel Services – Salaries	588,697.55
Total Personnel Services – Salaries	\$588,697.55
200 Personnel Services – Employee Benefits	
210 Group Insurance – Contracted Provider	126.00
220 Social Security Contributions	44,579.82
230 PSERS Retirement Contributions	192,848.08
260 Workers’ Compensation	5,662.48
270 Group Insurance – Self-Insurance	17,303.80
299 All Other Employee Benefits	4,077.73
Total Personnel Services – Employee Benefits	\$264,597.91
300 Purchased Professional and Technical Services	
329 Professional Educational Services – Other	12,078.89
330 Other Professional Services	100,493.60
390 Other Purchased Professional and Technical Services	4,266.34
Total Purchased Professional and Technical Services	\$116,838.83
400 Purchased Property Services	
430 Repairs and Maintenance Services	9,221.52
Total Purchased Property Services	\$9,221.52
500 Other Purchased Services	
510 Student Transportation Services	82,173.07
520 Insurance – General	28,760.00
530 Communications	4,220.78
550 Printing and Binding	90.00
580 Travel	6,373.13
Total Other Purchased Services	\$121,616.98
600 Supplies	
610 General Supplies	67,895.04
630 Food	526.80
640 Books and Periodicals	62.21
650 Supplies & Fees – Technology Related	3,087.00
Total Supplies	\$71,571.05
700 Property	
752 Capital Equipment – Original and Additional	2,890.00
Total Property	\$2,890.00
800 Other Objects	
810 Dues and Fees	4,484.55
890 Miscellaneous Expenditures	7,816.60
Total Other Objects	\$12,301.15
Total 3000 Operation of Non-Instructional Services	\$1,187,734.99

General Fund (10)

3200 Student Activities

Elementary Secondary Federal Total

100	<u>Personnel Services – Salaries</u>			
	100 Personnel Services – Salaries			573,688.26
Total Personnel Services – Salaries				\$573,688.26
200	<u>Personnel Services – Employee Benefits</u>			
	210 Group Insurance – Contracted Provider			126.00
	220 Social Security Contributions			43,477.27
	230 PSERS Retirement Contributions			187,603.84
	260 Workers' Compensation			5,518.11
	270 Group Insurance – Self-Insurance			17,303.80
	299 All Other Employee Benefits			4,077.73
Total Personnel Services – Employee Benefits				\$258,106.75
300	<u>Purchased Professional and Technical Services</u>			
	329 Professional Educational Services – Other			12,078.89
	330 Other Professional Services			100,493.60
	390 Other Purchased Professional and Technical Services			4,266.34
Total Purchased Professional and Technical Services				\$116,838.83
400	<u>Purchased Property Services</u>			
	430 Repairs and Maintenance Services			9,221.52
Total Purchased Property Services				\$9,221.52
500	<u>Other Purchased Services</u>			
	510 Student Transportation Services			82,173.07
	520 Insurance – General			28,760.00
	530 Communications			1,118.74
	550 Printing and Binding			90.00
	580 Travel			6,373.13
Total Other Purchased Services				\$118,514.94
600	<u>Supplies</u>			
	610 General Supplies			64,762.51
	630 Food			46.80
	650 Supplies & Fees – Technology Related			3,087.00
Total Supplies				\$67,896.31
700	<u>Property</u>			
	752 Capital Equipment – Original and Additional			2,890.00
Total Property				\$2,890.00
800	<u>Other Objects</u>			
	810 Dues and Fees			4,484.55
	890 Miscellaneous Expenditures			7,816.60
Total Other Objects				\$12,301.15
Total 3200 Student Activities				\$1,159,457.76

General Fund (10)

3300 Community Services

100 Personnel Services – Salaries

	<u>Elementary</u>	<u>Secondary</u>	<u>Federal</u>	<u>Total</u>
100 Personnel Services – Salaries			1,657.50	15,009.29
Total Personnel Services – Salaries			\$1,657.50	\$15,009.29

200 Personnel Services – Employee Benefits

220 Social Security Contributions			123.42	1,102.55
230 PSERS Retirement Contributions			289.58	5,244.24
260 Workers' Compensation			15.94	144.37
Total Personnel Services – Employee Benefits			\$428.94	\$6,491.16

500 Other Purchased Services

530 Communications			148.40	3,102.04
Total Other Purchased Services			\$148.40	\$3,102.04

600 Supplies

610 General Supplies			3,132.53	3,132.53
630 Food			380.00	480.00
640 Books and Periodicals			62.21	62.21
Total Supplies			\$3,574.74	\$3,674.74
Total 3300 Community Services			\$5,809.58	\$28,277.23

General Fund (10)

5000 Other Expenditures and Financing Uses

Total

800 Other Objects

830 Interest 18,912.58

880 Refunds of Prior Years' Receipts 10,253.40

Total Other Objects \$29,165.98

900 Other Uses of Funds

910 Redemption of Principal 443,380.40

932 Capital Reserve Fund Transfers Applicable To Fund 32 5,001,500.00

Total Other Uses of Funds \$5,444,880.40

Total 5000 Other Expenditures and Financing Uses \$5,474,046.38

General Fund (10)

5100 Debt Service / Other Expenditures and Financing Uses	<u>Elementary</u>	<u>Secondary</u>	<u>Federal</u>	<u>Total</u>
800 Other Objects				
830 Interest				18,912.58
880 Refunds of Prior Years' Receipts				10,253.40
Total Other Objects				\$29,165.98
900 Other Uses of Funds				
910 Redemption of Principal				443,380.40
Total Other Uses of Funds				\$443,380.40
Total 5100 Debt Service / Other Expenditures and Financing Uses				\$472,546.38

General Fund (10)

5130 Refund of Prior Year Revenues / Receipts

Elementary

Secondary

Federal

Total

800 Other Objects

880 Refunds of Prior Years' Receipts

10,253.40

Total Other Objects

\$10,253.40

Total 5130 Refund of Prior Year Revenues / Receipts

\$10,253.40

General Fund (10)

	<u>Elementary</u>	<u>Secondary</u>	<u>Federal</u>	<u>Total</u>
5140 Leases				
800 <u>Other Objects</u>				
830 Interest				18,912.58
Total Other Objects				\$18,912.58
900 <u>Other Uses of Funds</u>				
910 Redemption of Principal				443,380.40
Total Other Uses of Funds				\$443,380.40
Total 5140 Leases				\$462,292.98

LEA : 113361303 Cocalico SD

Printed 12/14/2022 10:14:34 AM

General Fund (10)

5200 Interfund Transfers – Out

Elementary

Secondary

Federal

Total

900 Other Uses of Funds

932 Capital Reserve Fund Transfers Applicable To Fund 32

5,001,500.00

Total Other Uses of Funds

\$5,001,500.00

Total 5200 Interfund Transfers – Out

\$5,001,500.00

LEA : 113361303 Cocalico SD

Printed 12/14/2022 10:14:34 AM

General Fund (10)

5230 Capital Projects Fund Transfers

Elementary

Secondary

Federal

Total

900 Other Uses of Funds

932 Capital Reserve Fund Transfers Applicable To Fund 32

5,001,500.00

Total Other Uses of Funds

\$5,001,500.00

Total 5230 Capital Projects Fund Transfers

\$5,001,500.00

LEA : 113361303 Cocalico SD

Printed 12/14/2022 10:14:20 AM

Student Sponsored Activity Fund (21)

	<u>Elementary</u>	<u>Secondary</u>	<u>Federal</u>	<u>Total</u>
3200 Student Activities				
600 Supplies				
610 General Supplies				59,823.00
Total Supplies				\$59,823.00
Total 3200 Student Activities				\$59,823.00

LEA : 113361303 Cocalico SD

Printed 12/14/2022 10:14:09 AM

Capital Reserve Fund - § 1431 (32)

2000 Support Services

Total

800 Other Objects

890 Miscellaneous Expenditures

1,628.91

Total Other Objects

\$1,628.91

Total 2000 Support Services

\$1,628.91

LEA : 113361303 Cocalico SD

Printed 12/14/2022 10:14:09 AM

Capital Reserve Fund - § 1431 (32)

2500 Support Services – Business

Elementary

Secondary

Federal

Total

800 Other Objects

890 Miscellaneous Expenditures

1,628.91

Total Other Objects

\$1,628.91

Total 2500 Support Services – Business

\$1,628.91

LEA : 113361303 Cocalico SD

Printed 12/14/2022 10:14:09 AM

Capital Reserve Fund - § 1431 (32)

2510 Fiscal Services

Elementary

Secondary

Federal

Total

800 Other Objects

890 Miscellaneous Expenditures

1,628.91

Total Other Objects

\$1,628.91

Total 2510 Fiscal Services

\$1,628.91

LEA : 113361303 Cocalico SD

Printed 12/14/2022 10:14:09 AM

Capital Reserve Fund - § 1431 (32)

2515 Financial Accounting Services

Elementary

Secondary

Federal

Total

800 Other Objects

890 Miscellaneous Expenditures

1,628.91

Total Other Objects

\$1,628.91

Total 2515 Financial Accounting Services

\$1,628.91

Capital Reserve Fund - § 1431 (32)

4000 Facilities Acquisition, Construction and Improvement Services

Total

300 Purchased Professional and Technical Services

330 Other Professional Services	492,771.58
340 Technical Services	43,330.95

Total Purchased Professional and Technical Services	\$536,102.53
--	---------------------

400 Purchased Property Services

430 Repairs and Maintenance Services	177,215.51
450 Construction Services	7,121,235.11
490 Other Purchased Property Services	93,419.00

Total Purchased Property Services	\$7,391,869.62
--	-----------------------

500 Other Purchased Services

520 Insurance – General	28,571.00
549 Other Advertising/Public Relations	3,260.05

Total Other Purchased Services	\$31,831.05
---------------------------------------	--------------------

600 Supplies

610 General Supplies	23,315.07
----------------------	-----------

Total Supplies	\$23,315.07
-----------------------	--------------------

700 Property

752 Capital Equipment – Original and Additional	56,968.43
762 Capitalized Equipment - Replacement	13,607.00
766 Capitalized Technology Equipment – Replacement	76,251.12

Total Property	\$146,826.55
-----------------------	---------------------

Total 4000 Facilities Acquisition, Construction and Improvement Services	\$8,129,944.82
---	-----------------------

Capital Reserve Fund - § 1431 (32)

4200 Existing Site Improvement Services

Elementary

Secondary

Federal

Total

300 Purchased Professional and Technical Services

340 Technical Services

43,330.95

Total Purchased Professional and Technical Services

\$43,330.95

400 Purchased Property Services

430 Repairs and Maintenance Services

177,215.51

Total Purchased Property Services

\$177,215.51

500 Other Purchased Services

520 Insurance – General

28,571.00

549 Other Advertising/Public Relations

3,260.05

Total Other Purchased Services

\$31,831.05

600 Supplies

610 General Supplies

17,896.51

Total Supplies

\$17,896.51

700 Property

752 Capital Equipment – Original and Additional

56,968.43

762 Capitalized Equipment - Replacement

13,607.00

766 Capitalized Technology Equipment – Replacement

76,251.12

Total Property

\$146,826.55

Total 4200 Existing Site Improvement Services

\$417,100.57

LEA : 113361303 Cocalico SD

Printed 12/14/2022 10:14:25 AM

Capital Reserve Fund - § 1431 (32)

4400 Architecture and Engineering Services / Educational Specifications – Improvements

Elementary

Secondary

Federal

Total

300 Purchased Professional and Technical Services

330 Other Professional Services

492,771.58

Total Purchased Professional and Technical Services

\$492,771.58

Total 4400 Architecture and Engineering Services / Educational Specifications – Improvements

\$492,771.58

LEA : 113361303 Cocalico SD

Printed 12/14/2022 10:14:25 AM

Capital Reserve Fund - § 1431 (32)

4600 Existing Building Improvement Services

Elementary

Secondary

Federal

Total

400 Purchased Property Services

450 Construction Services

7,121,235.11

490 Other Purchased Property Services

93,419.00

Total Purchased Property Services

\$7,214,654.11

600 Supplies

610 General Supplies

5,418.56

Total Supplies

\$5,418.56

Total 4600 Existing Building Improvement Services

\$7,220,072.67

LEA : 113361303 Cocalico SD

Printed 12/14/2022 10:14:11 AM

Other Capital Projects Fund (39)

2000 Support Services

300 Purchased Professional and Technical Services

330 Other Professional Services

Total

59,597.00

Total Purchased Professional and Technical Services

\$59,597.00

Total 2000 Support Services

\$59,597.00

LEA : 113361303 Cocalico SD

Printed 12/14/2022 10:14:11 AM

Other Capital Projects Fund (39)

2300 Support Services – Administration

Elementary

Secondary

Federal

Total

300 Purchased Professional and Technical Services

330 Other Professional Services

59,597.00

Total Purchased Professional and Technical Services

\$59,597.00

Total 2300 Support Services – Administration

\$59,597.00

LEA : 113361303 Cocalico SD

Printed 12/14/2022 10:14:11 AM

Other Capital Projects Fund (39)

2390 Other Administration Services

Elementary

Secondary

Federal

Total

300 Purchased Professional and Technical Services

330 Other Professional Services

59,597.00

Total Purchased Professional and Technical Services

\$59,597.00

Total 2390 Other Administration Services

\$59,597.00

Other Capital Projects Fund (39)

4000 Facilities Acquisition, Construction and Improvement Services

Total

300 Purchased Professional and Technical Services

330 Other Professional Services 57,589.92

Total Purchased Professional and Technical Services \$57,589.92

400 Purchased Property Services

450 Construction Services 5,796,999.53

490 Other Purchased Property Services 680.00

Total Purchased Property Services \$5,797,679.53

600 Supplies

610 General Supplies 2,994.50

Total Supplies \$2,994.50

700 Property

752 Capital Equipment – Original and Additional 29,425.27

Total Property \$29,425.27

Total 4000 Facilities Acquisition, Construction and Improvement Services \$5,887,689.22

LEA : 113361303 Cocalico SD

Printed 12/14/2022 10:14:29 AM

Other Capital Projects Fund (39)

4400 Architecture and Engineering Services / Educational Specifications – Improvements

Elementary

Secondary

Federal

Total

300 Purchased Professional and Technical Services

330 Other Professional Services

57,589.92

Total Purchased Professional and Technical Services

\$57,589.92

Total 4400 Architecture and Engineering Services / Educational Specifications – Improvements

\$57,589.92

Other Capital Projects Fund (39)

4600 Existing Building Improvement Services

Elementary

Secondary

Federal

Total

400 Purchased Property Services

450 Construction Services

5,796,999.53

490 Other Purchased Property Services

680.00

Total Purchased Property Services

\$5,797,679.53

600 Supplies

610 General Supplies

2,994.50

Total Supplies

\$2,994.50

700 Property

752 Capital Equipment – Original and Additional

29,425.27

Total Property

\$29,425.27

Total 4600 Existing Building Improvement Services

\$5,830,099.30

Other Capital Projects Fund (39)

5000 Other Expenditures and Financing Uses

Total

900 Other Uses of Funds

990 Miscellaneous Other Uses of Funds

120,268.75

Total Other Uses of Funds

\$120,268.75

Total 5000 Other Expenditures and Financing Uses

\$120,268.75

LEA : 113361303 Cocalico SD

Printed 12/14/2022 10:14:38 AM

Other Capital Projects Fund (39)

5100 Debt Service / Other Expenditures and Financing Uses

Elementary

Secondary

Federal

Total

900 Other Uses of Funds

990 Miscellaneous Other Uses of Funds

120,268.75

Total Other Uses of Funds

\$120,268.75

Total 5100 Debt Service / Other Expenditures and Financing Uses

\$120,268.75

LEA : 113361303 Cocalico SD

Printed 12/14/2022 10:14:38 AM

Other Capital Projects Fund (39)

5150 Bond Discounts

Elementary

Secondary

Federal

Total

900 Other Uses of Funds

990 Miscellaneous Other Uses of Funds

120,268.75

Total Other Uses of Funds

\$120,268.75

Total 5150 Bond Discounts

\$120,268.75

	<u>General Fund(10)</u>	<u>Student Sponsored Activity Fund(21)</u>	<u>Public Purpose Trust(27)</u>	<u>Other Compt Approved (28)</u>	<u>Athletic / Activity(29)</u>
1000 Instruction					
1100 Regular Programs - Elementary / Secondary	27,720,017.22				
1200 Special Programs - Elementary / Secondary	10,674,312.91				
1300 Vocational Education	1,261,979.13				
1400 Other Instructional Programs - Elementary / Secondary	289,244.61				
1500 Nonpublic School Programs	3,791.46				
Total Instruction	\$39,949,345.33				
2000 Support Services					
2100 Support Services - Students	2,399,023.62				
2200 Support Services - Instructional Staff	2,422,741.83				
2300 Support Services - Administration	4,140,508.41				
2400 Support Services - Pupil Health	695,426.23				
2500 Support Services - Business	745,165.64				
2600 Operation and Maintenance of Plant Services	4,134,898.83				
2700 Student Transportation Services	2,740,684.12				
2800 Support Services - Central	1,453,902.31				
2900 Other Support Services	24,096.54				
Total Support Services	\$18,756,447.53				
3000 Operation of Non-Instructional Services					
3200 Student Activities	1,159,457.76	59,823.00			
3300 Community Services	28,277.23				
Total Operation of Non-Instructional Services	\$1,187,734.99	\$59,823.00			
4000 Facilities Acquisition, Construction and Improvement Services					
4200 Existing Site Improvement Services					
4400 Architecture and Engineering Services / Educational Specifications - Improvements					
4600 Existing Building Improvement Services					
Total Facilities Acquisition, Construction and Improvement Services					
5000 Other Expenditures and Financing Uses					
5100 Debt Service / Other Expenditures and Financing Uses	472,546.38				
5200 Interfund Transfers - Out	5,001,500.00				
Total Other Expenditures and Financing Uses	\$5,474,046.38				
TOTAL ACTUAL EXPENDITURES & OTHER FINANCING USES	\$65,367,574.23	\$59,823.00			

	<u>Capital Reserve (690. 1850)(31)</u>	<u>Capital Reserve (1431)(32)</u>	<u>Other Capital Projects Fund(39)</u>	<u>Debt Service(40)</u>	<u>Permanent(90)</u>
1000 Instruction					
1100 Regular Programs - Elementary / Secondary					
1200 Special Programs - Elementary / Secondary					
1300 Vocational Education					
1400 Other Instructional Programs - Elementary / Secondary					
1500 Nonpublic School Programs					
Total Instruction					
2000 Support Services					
2100 Support Services - Students					
2200 Support Services - Instructional Staff					
2300 Support Services - Administration			59,597.00		
2400 Support Services - Pupil Health					
2500 Support Services - Business		1,628.91			
2600 Operation and Maintenance of Plant Services					
2700 Student Transportation Services					
2800 Support Services - Central					
2900 Other Support Services					
Total Support Services		\$1,628.91	\$59,597.00		
3000 Operation of Non-Instructional Services					
3200 Student Activities					
3300 Community Services					
Total Operation of Non-Instructional Services					
4000 Facilities Acquisition, Construction and Improvement Services					
4200 Existing Site Improvement Services		417,100.57			
4400 Architecture and Engineering Services / Educational Specifications - Improvements		492,771.58	57,589.92		
4600 Existing Building Improvement Services		7,220,072.67	5,830,099.30		
Total Facilities Acquisition, Construction and Improvement Services		\$8,129,944.82	\$5,887,689.22		
5000 Other Expenditures and Financing Uses					
5100 Debt Service / Other Expenditures and Financing Uses				120,268.75	
5200 Interfund Transfers - Out					
Total Other Expenditures and Financing Uses				\$120,268.75	
TOTAL ACTUAL EXPENDITURES & OTHER FINANCING USES		\$8,131,573.73	\$6,067,554.97		

Total

1000 <u>Instruction</u>	
1100 Regular Programs - Elementary / Secondary	27,720,017.22
1200 Special Programs - Elementary / Secondary	10,674,312.91
1300 Vocational Education	1,261,979.13
1400 Other Instructional Programs - Elementary / Secondary	289,244.61
1500 Nonpublic School Programs	3,791.46
Total Instruction	\$39,949,345.33
2000 <u>Support Services</u>	
2100 Support Services - Students	2,399,023.62
2200 Support Services - Instructional Staff	2,422,741.83
2300 Support Services - Administration	4,200,105.41
2400 Support Services - Pupil Health	695,426.23
2500 Support Services - Business	746,794.55
2600 Operation and Maintenance of Plant Services	4,134,898.83
2700 Student Transportation Services	2,740,684.12
2800 Support Services - Central	1,453,902.31
2900 Other Support Services	24,096.54
Total Support Services	\$18,817,673.44
3000 <u>Operation of Non-Instructional Services</u>	
3200 Student Activities	1,219,280.76
3300 Community Services	28,277.23
Total Operation of Non-Instructional Services	\$1,247,557.99
4000 <u>Facilities Acquisition, Construction and Improvement Services</u>	
4200 Existing Site Improvement Services	417,100.57
4400 Architecture and Engineering Services / Educational Specifications - Improvements	550,361.50
4600 Existing Building Improvement Services	13,050,171.97
Total Facilities Acquisition, Construction and Improvement Services	\$14,017,634.04
5000 <u>Other Expenditures and Financing Uses</u>	
5100 Debt Service / Other Expenditures and Financing Uses	592,815.13
5200 Interfund Transfers - Out	5,001,500.00
Total Other Expenditures and Financing Uses	\$5,594,315.13
TOTAL ACTUAL EXPENDITURES & OTHER FINANCING USES	\$79,626,525.93

LEA : 113361303 Cocalico SD

Printed 12/14/2022 10:14:49 AM

PSERS Salary Data (Salary Data should relate to the General Fund only)

Amount Description	Amount
Total Salary Base for salaries subject to PSERS withholding	26,058,290.85
Total Federally Funded salaries subject to PSERS withholding	1,750,482.89
	<hr/>

Title I Expenditure Data

Amount Description	Amount
Expenditures Funded with Current Title I Funds	522,263.00
Expenditures Funded with Carry over Title I Funds	
Total Title I Expenditure Data	<hr/> \$522,263.00 <hr/>

Title IV Revenue Data

Amount Description	Amount
Revenue from Title IV-A-1: Student Support and Academic Enrichment Grants	26,734.00
Revenue from Title IV-B: 21st Century Community Learning Centers	
	<hr/>

Title V Revenue Data

Amount Description	Amount
Revenue from Title V-B-2: Rural and Low-Income School Programs	
Revenue from Title V-B-1: Small Rural School Achievement (Directly from the Federal Govt)	
	<hr/>

1. <u>Current Special Education Expenditures within Function 1000.\r\nSee list of exclusions in the note below.</u>	6,175,872.86
2. <u>Current Special Education Expenditures within Function 2000.\r\nSee list of exclusions in the note below.</u>	2,231,563.98
3. <u>Current Special Education Expenditures within Sub-Function 2100.\r\nThis data should also be included in line 2 above.\r\nSee list of exclusions in the note below.</u>	858,527.82
4. <u>Current Special Education Expenditures within Sub-Function 2200.\r\nThis data should also be included in line 2 above.\r\nSee list of exclusions in the note below.</u>	441,267.58
5. <u>Current Special Education Expenditures within Sub-Function 2700.\r\nThis data should also be included in line 2 above.\r\nSee list of exclusions in the note below.</u>	917,657.08
6. <u>Current Special Education Expenditures within Sub-Function 3100.\r\nSee list of exclusions in the note below.</u>	
7. <u>Current Special Education Expenditures within Sub-Function 3200.\r\nSee list of exclusions in the note below.</u>	

Note: The Current Special Education Expenditure amounts for each line should be calculated as follows:

- * Include the total expenditures for special education costs from all funds for the function/sub-function requested
- * Exclude data from sub-functions: 1243,1450,1500,1600,1807,2280,2450,2750,2990
- * Exclude data from objects: 322,511,512,516,561,562,564,566,592,593,594,595,596,597,700,830,899

Benefits for Staff Relative to Collective Bargaining Agreements

	OBJECT	COVERED	NOT COVERED	TOTAL
10 General Fund				
	211 Medical Insurance			
	212 Dental Insurance			
	215 Eye Care Insurance			
	216 Prescription Insurance			
	271 Self-Insurance Medical Benefits	3,335,869.86	1,203,401.00	4,539,270.86
	272 Self-Insurance Dental Benefits	250,306.63	87,962.93	338,269.56
	275 Self-Insurance Eye Care Benefits	54,719.08	18,727.54	73,446.62
	276 Self-Insurance Prescription Benefits	1,152,615.27	399,635.68	1,552,250.95
	FUND TOTAL	\$4,793,510.84	\$1,709,727.15	\$6,503,237.99
50 Enterprise Fund				
	211 Medical Insurance			
	212 Dental Insurance			
	215 Eye Care Insurance			
	216 Prescription Insurance			
	271 Self-Insurance Medical Benefits		96,901.21	96,901.21
	272 Self-Insurance Dental Benefits		6,921.51	6,921.51
	275 Self-Insurance Eye Care Benefits		1,384.30	1,384.30
	276 Self-Insurance Prescription Benefits		33,223.28	33,223.28
	FUND TOTAL		\$138,430.30	\$138,430.30
60 Internal Service Fund	No Self Insurance data to report			
	211 Medical Insurance			
	212 Dental Insurance			
	215 Eye Care Insurance			
	216 Prescription Insurance			
	271 Self-Insurance Medical Benefits			
	272 Self-Insurance Dental Benefits			
	275 Self-Insurance Eye Care Benefits			
	276 Self-Insurance Prescription Benefits			
	FUND TOTAL			
Total of All Funds		\$4,793,510.84	\$1,848,157.45	\$6,641,668.29

LEA : 113361303 Cocalico SD

Printed 12/14/2022 10:15:03 AM

Function	Special Education (Prior Year)	Nonspecial Education (Prior Year)	Total (Prior Year)	Special Education (Current Year)	Nonspecial Education (Current Year)	Total (Current Year)
2120 Guidance Services		1,309,792.40	1,309,792.40		1,371,962.98	1,371,962.98
2140 Psychological Services	554,942.02		554,942.02	671,596.00		671,596.00
2150 Speech Pathology and Audiology Services						
2160 Social Work Services	251,511.64		251,511.64	256,072.45		256,072.45
2260 Instruction and Curriculum Development Services	509,036.66	290,252.98	799,289.64	381,157.76	299,021.28	680,179.04
2350 Legal and Accounting Services	15,373.46	23,064.50	38,437.96	14,111.50	21,730.75	35,842.25
2420 Medical Services		5,293.05	5,293.05		4,854.98	4,854.98
2440 Nursing Services		617,264.34	617,264.34		690,385.51	690,385.51
2700 Student Transportation Services	763,305.26	1,713,350.25	2,476,655.51	917,657.08	1,823,027.04	2,740,684.12
Total	\$2,094,169.04	\$3,959,017.52	\$6,053,186.56	\$2,240,594.79	\$4,210,982.54	\$6,451,577.33

(PRINCIPAL AMOUNTS ONLY)

GOVERNMENTAL FUNDS/ ACTIVITIES

	Short-Term Borrowing	General Obligation Bonds/Notes	Authority Building Obligations	OLTD, Ext Term Fin, Leases	Other Post-Employment Benefits (OPEB)	Compensated Absences	Net Pension Liability	Total
1. Debt at Beginning of Fiscal Year				912,967.00	8,479,000.00	4,488,670.00	84,928,000.00	98,808,637.00
2. Additional Debt Incurred During Year		13,745,000.00		692,854.00	598,000.00	202,581.00		15,238,435.00
3. Retirements and Repayments				443,380.00		257,952.00	12,021,000.00	12,722,332.00
4. Debt at End of Fiscal Year		13,745,000.00		1,162,441.00	9,077,000.00	4,433,299.00	72,907,000.00	101,324,740.00
5. Accreted Interest at End Of Fiscal Year								
6. Total Debt and Accreted Interest		13,745,000.00		1,162,441.00	9,077,000.00	4,433,299.00	72,907,000.00	101,324,740.00
7. Current Portion P&I - Due within 1 year		1,655,158.00		474,194.06				2,129,352.06
8. Interest Paid during current fiscal year				18,912.58				18,912.58

(PRINCIPAL AMOUNTS ONLY)

PROPRIETARY FUNDS

	Short-Term Borrowing	General Obligation Bonds/Notes	Authority Building Obligations	OLTD, Ext Term Fin, Leases	Other Post-Employment Benefits (OPEB)	Compensated Absences	Net Pension Liability	Total
1. Debt at Beginning of Fiscal Year					173,000.00	86,813.00	1,733,000.00	1,992,813.00
2. Additional Debt Incurred During Year					12,000.00	4,793.00		16,793.00
3. Retirements and Repayments						15,175.00	245,000.00	260,175.00
4. Debt at End of Fiscal Year					185,000.00	76,431.00	1,488,000.00	1,749,431.00
5. Accreted Interest at End Of Fiscal Year								
6. Total Debt and Accreted Interest					185,000.00	76,431.00	1,488,000.00	1,749,431.00
7. Current Portion P&I - Due within 1 year								
8. Interest Paid during current fiscal year								

Total Principal and Interest Payments Made by Your School - All Funds

Function	Fund		Principal (910)	Principal (920)	Interest (830)	Total (Principal +Interest)	Misc Other Uses (990)
5110	10	General Fund					
5110	20	Special Revenue Funds					
5110	30	Capital Projects Funds					
5110	40	Debt Service Fund					
5110	90	Permanent Fund					
5120	10	General Fund					
5120	20	Special Revenue Funds					
5120	30	Capital Projects Funds					
5120	40	Debt Service Fund					
5140	10	General Fund	443,380.40		18,912.58	462,292.98	
5140	20	Special Revenue Funds					
5140	30	Capital Projects Funds					
5140	40	Debt Service Fund					
5140	90	Permanent Fund					
Total Debt Payments - Governmental Funds			\$443,380.40		\$18,912.58	\$462,292.98	

Function	Fund		Principal (910)	Principal (920)	Interest (830)	Total (Principal +Interest)
5110	50	Enterprise Fund				
5110	60	Internal Service Fund				
5120	50	Enterprise Fund				
5120	60	Internal Service Fund				
5140	50	Enterprise Fund				
5140	60	Internal Service Fund				
Total Debt Payments - Proprietary Funds						

Debt Details
Governmental Funds/ Activities

Debt Category	Debt Issue Date (MM/YYYY)	Principal Amounts Only				Current Portion Due Within One Year (Principal and Interest)	Interest Paid During Fiscal Year
		Debt at Beginning of Fiscal Year	Additions	Reductions / Repayments	Debt at End of Fiscal Year		
General Obligation Bonds/Notes – CIB	05/2022		13,745,000.00		13,745,000.00	1,655,158.00	
Compensated Absences		4,488,670.00	202,581.00	257,952.00	4,433,299.00		
Other Post-Employment Benefits (OPEB)		8,479,000.00	598,000.00		9,077,000.00		
Net Pension Liability		84,928,000.00		12,021,000.00	72,907,000.00		
Leases		912,967.00	692,854.00	443,380.00	1,162,441.00	474,194.06	18,912.58
Totals for Debt Entered:		\$98,808,637.00	\$15,238,435.00	\$12,722,332.00	\$101,324,740.00	\$2,129,352.06	\$18,912.58

Bond Details
Proprietary Funds

Debt Category	Debt Issue Date (MM/YYYY)	Principal Amounts Only				Current Portion Due Within One Year (Principal and Interest)	Interest Paid During Fiscal Year
		Debt at Beginning of Fiscal Year	Additions	Reductions / Repayments	Debt at End of Fiscal Year		
Compensated Absences		86,813.00	4,793.00	15,175.00	76,431.00		
Other Post-Employment Benefits (OPEB)		173,000.00	12,000.00		185,000.00		
Net Pension Liability		1,733,000.00		245,000.00	1,488,000.00		
Totals for Debt Entered:		\$1,992,813.00	\$16,793.00	\$260,175.00	\$1,749,431.00		

General Fund (10)

Section 1: Tuition/Purchased Services as Reported within Expenditure Detail

	Amount
Tuition Reported in General Fund Expenditures 1000-560	4,258,836.58
Purchased Services in General Fund Expenditures 1000-594 and 1000-597	

Section 1 Total	\$4,258,836.58
------------------------	-----------------------

Section 2: Tuition Paid to Institution Types During Fiscal Year

	Tuition Paid For Nonspecial Education	Tuition Paid For Special Education	Total
1 1306 Institutions			
2 Institutionalized Children's Programs			
3 Juveniles Incarcerated in Adult Facilities		4,371.36	4,371.36
4 Residential Treatment Facilities			
5 Other Local Education Agencies	44,451.26	503,624.14	548,075.40
6 Brick and Mortar Charter Schools			
7 Cyber Charter Schools	922,181.39	619,587.87	1,541,769.26
8 Career and Technology Centers	1,200,501.91		1,200,501.91
9 Approved Private Schools		109,350.00	109,350.00
10 PA Chartered Schools for the Deaf and Blind			
11 Private Residential Rehabilitative Institutions	67,352.04	231,924.62	299,276.66
12 Juvenile Detention Centers			
13 Special Program Jointures			
14 Other Tuition Not Included Elsewhere In This Section		555,491.99	555,491.99
Section 2 Total	\$2,234,486.60	\$2,024,349.98	\$4,258,836.58

Food Service / Cafeteria Operations Fund (51)

3000 Operation of Non-Instructional Services

Total

100 Personnel Services – Salaries

100 Personnel Services – Salaries 532,474.00

Total Personnel Services – Salaries \$532,474.00

200 Personnel Services – Employee Benefits

210 Group Insurance – Contracted Provider 417.00

220 Social Security Contributions 39,726.00

230 PSERS Retirement Contributions 133,416.00

260 Workers’ Compensation 5,222.00

270 Group Insurance – Self-Insurance 138,430.00

280 Other Post-Employment Benefits (OPEB) 8,000.00

299 All Other Employee Benefits 4,078.00

Total Personnel Services – Employee Benefits \$329,289.00

300 Purchased Professional and Technical Services

300 Purchased Professional and Technical Services 3,646.00

322 Professional Educational Services – lus 677.00

390 Other Purchased Professional and Technical Services 50.00

Total Purchased Professional and Technical Services \$4,373.00

400 Purchased Property Services

430 Repairs and Maintenance Services 150.00

Total Purchased Property Services \$150.00

600 Supplies

610 General Supplies 86,246.00

630 Food 1,020,882.00

650 Supplies & Fees – Technology Related 6,516.00

Total Supplies \$1,113,644.00

700 Property

740 Depreciation 6,369.00

Total Property \$6,369.00

800 Other Objects

800 Other Objects 1,213.00

Total Other Objects \$1,213.00

Total 3000 Operation of Non-Instructional Services \$1,987,512.00

Food Service / Cafeteria Operations Fund (51)

	<u>Elementary</u>	<u>Secondary</u>	<u>Federal</u>	<u>Total</u>
3100 Food Services				
100 Personnel Services – Salaries				
100 Personnel Services – Salaries				532,474.00
Total Personnel Services – Salaries				\$532,474.00
200 Personnel Services – Employee Benefits				
210 Group Insurance – Contracted Provider				417.00
220 Social Security Contributions				39,726.00
230 PSERS Retirement Contributions				133,416.00
260 Workers' Compensation				5,222.00
270 Group Insurance – Self-Insurance				138,430.00
280 Other Post-Employment Benefits (OPEB)				8,000.00
299 All Other Employee Benefits				4,078.00
Total Personnel Services – Employee Benefits				\$329,289.00
300 Purchased Professional and Technical Services				
300 Purchased Professional and Technical Services				3,646.00
322 Professional Educational Services – Ius				677.00
390 Other Purchased Professional and Technical Services				50.00
Total Purchased Professional and Technical Services				\$4,373.00
400 Purchased Property Services				
430 Repairs and Maintenance Services				150.00
Total Purchased Property Services				\$150.00
600 Supplies				
610 General Supplies				86,246.00
630 Food				1,020,882.00
650 Supplies & Fees – Technology Related				6,516.00
Total Supplies				\$1,113,644.00
700 Property				
740 Depreciation			1,667.00	6,369.00
Total Property			\$1,667.00	\$6,369.00
800 Other Objects				
800 Other Objects				1,213.00
Total Other Objects				\$1,213.00
Total 3100 Food Services			\$1,667.00	\$1,987,512.00

Internal Service Fund (60)

2000 Support Services

Total

200 Personnel Services – Employee Benefits

270 Group Insurance – Self-Insurance

7,141,016.00

Total Personnel Services – Employee Benefits

\$7,141,016.00

Total 2000 Support Services

\$7,141,016.00

LEA : 113361303 Cocalico SD

Printed 12/14/2022 10:15:13 AM

Internal Service Fund (60)

2800 Support Services – Central

Elementary

Secondary

Federal

Total

200 Personnel Services – Employee Benefits

270 Group Insurance – Self-Insurance

7,141,016.00

Total Personnel Services – Employee Benefits

\$7,141,016.00

Total 2800 Support Services – Central

\$7,141,016.00

Internal Service Fund (60)

2830 Staff Services

Elementary

Secondary

Federal

Total

200 Personnel Services – Employee Benefits

270 Group Insurance – Self-Insurance

7,141,016.00

Total Personnel Services – Employee Benefits

\$7,141,016.00

Total 2830 Staff Services

\$7,141,016.00

Internal Service Fund (60)

2835 Health Services

Elementary

Secondary

Federal

Total

200 Personnel Services – Employee Benefits

270 Group Insurance – Self-Insurance

7,141,016.00

Total Personnel Services – Employee Benefits

\$7,141,016.00

Total 2835 Health Services

\$7,141,016.00

	<u>Food Service(51)</u>	<u>Child Care Operations(52)</u>	<u>Other Enterprise(58)</u>	<u>Internal Service(60)</u>	<u>Total</u>
2000 <u>Support Services</u>					
2800 Support Services - Central				7,141,016.00	7,141,016.00
Total Support Services				\$7,141,016.00	\$7,141,016.00
3000 <u>Operation of Non-Instructional Services</u>					
3100 Food Services	1,987,512.00				1,987,512.00
Total Operation of Non-Instructional Services	\$1,987,512.00				\$1,987,512.00
TOTAL ACTUAL EXPENDITURES & OTHER FINANCING USES	\$1,987,512.00			\$7,141,016.00	\$9,128,528.00

LEA : 113361303 Cocalico SD

Printed 12/14/2022 10:15:29 AM

Fund	School	School Number	Local Personnel	Local Nonpersonnel	State Personnel	State Nonpersonnel	Federal Personnel	Federal Nonpersonnel	Total	Explanation
10	Adamstown El Sch	2510	620,101.26	403,729.80	263,018.51	171,243.66	271,837.20	4,148.68	1,734,079.11	
	Cocalico MS	6289	1,097,619.85	714,628.20	465,559.99	303,112.50	481,169.66	7,343.44	3,069,433.64	
	Cocalico SHS	6290	1,420,643.14	924,939.22	602,571.65	392,316.79	622,775.16	9,504.57	3,972,750.53	
	Denver El Sch	2506	681,560.41	443,744.06	289,086.66	188,215.88	298,779.39	4,559.86	1,905,946.26	
	Reamstown El Sch	5053	584,704.79	380,684.20	248,004.95	161,468.77	256,320.26	3,911.87	1,635,094.84	
Total			4,404,629.45	2,867,725.48	1,868,241.76	1,216,357.60	1,930,881.67	29,468.42	12,317,304.38	