

LEA Name : Cocalico SD
Address : 800 4th Street
Denver , PA 17517

County : Lancaster
AUN Number : 113361303
LEA Type : SD

Annual Financial Report Accuracy Certification Statement

For Fiscal Year Ending
6/30/2021

Pennsylvania Department of Education


&

Office of Comptroller Operations

PDE-2056: Intermediate Unit

PDE-2057: School District, AVTS/CTC, Charter School,
and Special Program Jointure

CERTIFICATION: By signing this page I agree that the electronic data submitted is a complete and accurate statement of the financial operations and status of the local education agency for the fiscal year. It has been prepared in accordance with generally accepted accounting principles and established Commonwealth of PA reporting guidelines.



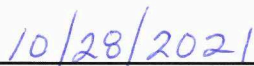
Chief School Administrator Signature



Date



Board Secretary Signature



Date

Lesley A Stricker

Contact Person

lstricker@cocalico.org

Contact Person E-mail Address

(717)336-1405

Ext :

Contact Person Telephone Number

(717)336-1415

Contact Person Fax Number

Audit Certification
Annual Financial Report:
For Fiscal Year Ending **6/30/2021**
(Pursuant to PA School Code Section 218(b))

LEA Name : Cocalico SD
AUN Number : 113361303
County : Lancaster

Audit Certification Due: 12/31/2021

This certification is applicable to the Annual Financial Report data submitted through the Consolidated Financial Reporting System (CFRS).

CERTIFICATION: By signing this page I agree that the financial statements of the school have been properly audited as noted above pursuant to Article XXIV, and in the auditor's professional opinion, the Annual Financial Report (PDE-2057) submitted through CFRS is materially consistent with the audited financial statements.

Chief School Administrator

Ellen Nusser
Signature
10/29/21
Date

Board Secretary

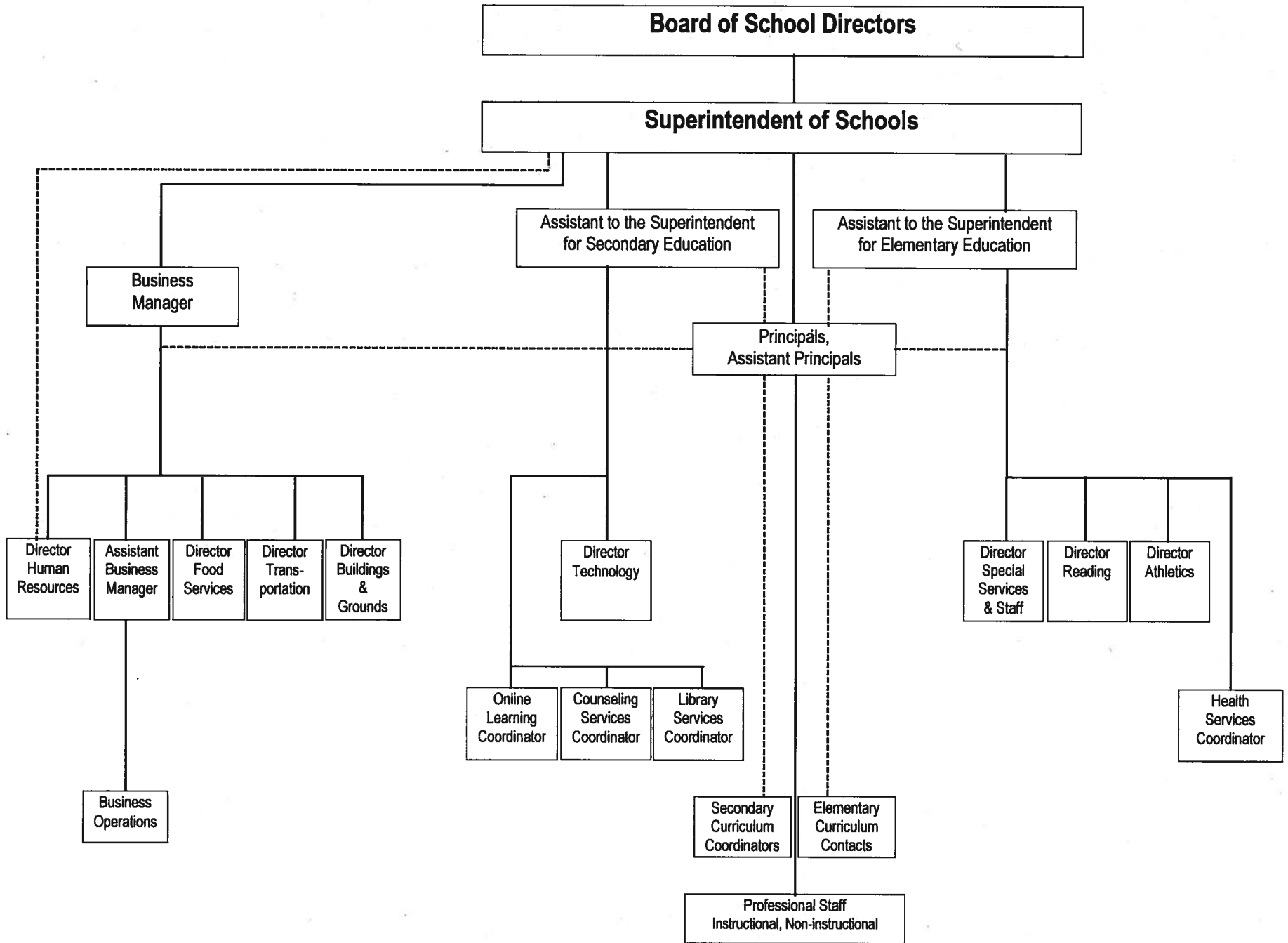
Cheri L. Stull
Signature
10/28/2021
Date

Lesley A Stricker
Contact Person

Istricker@cocalico.org
Contact Person E-mail Address

(717)336-1405 Ext :
Contact Person Telephone Number

(717)336-1415
Contact Person Fax Number





Book	Policy Manual
Section	600 Finances
Title	GASB Statement 34
Code	622
Status	Active
Adopted	July 20, 2009

Purpose

The district shall follow the requirements set forth by the Governmental Accounting Standards Board Statement No. 34 as it pertains to capital asset reporting.[\[1\]](#)

The primary objectives of implementing the GASB Statement 34 are to assure compliance with state requirements, and properly account for both the financial and economic resources of the district.

Definition

Capital assets shall include land, improvements to land, easements, buildings and building additions, building improvements, furniture, fixtures and equipment, vehicles, works of art and historical treasures, construction-in-progress and infrastructure. Capital assets are tangible assets used in operations and have initial useful lives extending beyond a single reporting period. Equipment will not change its original shape, appearance or character with use and it can be expected to last more than one (1) year with reasonable care and maintenance.

Authority

Participation of the school district in any such activity shall be in accordance with Board policy.[\[2\]](#)

Delegation of Responsibility

The responsibility to coordinate the compilation and preparation of all information necessary to implement this policy in accordance with district administrative procedures is delegated to the Business Manager, in cooperation with the local independent auditor.

The designated individual shall be responsible for implementing the necessary procedures to establish and maintain a fixed asset inventory, including depreciation schedules. Depreciation shall be computed on a straight-line basis over the estimated useful lives of the assets, using an averaging convention. Normal maintenance and repairs shall be charged to expense as incurred; major renewals and betterments that materially extend the life or increase the value of the asset shall be capitalized. A schedule of accumulated depreciation shall be consistent from year to year. The basis for depreciation, including groups of assets and useful lives, shall be in writing and submitted for review to the Board and independent auditors.

The Business Manager shall prepare the required Management Discussion and Analysis (MD&A). The MD&A shall be in the form required by GASB Statement 34 and shall be submitted to the Board for approval, prior to publication.

Prior to submission of the MD&A for Board approval, the district's independent auditors shall review the MD&A, in accordance with SAS No. 52, "Required Supplementary Information".

Guidelines

In order to associate debt with acquired assets and to avoid net asset deficits, any asset that has been acquired with debt proceeds shall be capitalized, regardless of the cost of the asset. The asset life of these assets shall be considered relative to the time of the respective debt amortizations.

The capitalization threshold shall be set at a level that will capture at least 80% of all fixed assets.

The assets listed below do not normally individually meet capitalization threshold criteria:

1. Library books.
2. Classroom texts.
3. Computer equipment.
4. Classroom furniture.

These asset category costs shall be capitalized and depreciated as groups when that group's acquisition cost exceeds the capitalization threshold in any given fiscal year.

For group asset depreciation purposes, the estimated useful life of the group may be based on the weighted average or simple average of the useful life of individual items, or on an assessment of the life of the group as a whole. Periodically, the district shall review the estimated life of groups of assets and adjust the remaining depreciation life of the group.

Assets that fall below the capitalization threshold for GASB 34 reporting purposes may still be significant for insurance, warranty service, and obsolescence/replacement policy tracking purposes. The district may record and maintain these non-GASB 34 asset inventories in subsidiary ledgers.

A capitalized asset shall be any asset acquired by donation or purchase that has a useful life of longer than one (1) year or extends the life of another capitalized asset or increases its value and meets a specific dollar threshold. At management's discretion, and in conjunction with the local auditor, capital assets purchased with long-term debt may be capitalized regardless of the specific dollar threshold for the type of class or asset acquired.

Value of Assets

All capitalized assets shall be recorded at historical cost at acquisition date or estimated cost if acquired prior to the date of the initial inventory. Any donated capital asset shall be recorded at the date of donation using the fair market value of the item at that date.

Dollar Threshold

A dollar threshold for each asset shall be set at an appropriate level. Management shall periodically review these levels with assistance from the local independent auditor and make any necessary modifications.

Legal

[1. 24 P.S. 613](#)

[2. 24 P.S. 218](#)

Governmental Accounting Standards Board, Statement No. 34

<u>Val Number</u>	<u>Description</u>	<u>Justification</u>
12195	REG: Current Year AFR Beginning Fund Balance must equal Prior Year AFR Ending Fund Balance. Justifications to this error must fully explain the situation that prompted a fund balance restatement. "Auditor Adjustment" is not a sufficient justification. Total Govt Funds, Beg Bal: \$33,893,380.00 PY Ending Bal, Govt Funds: \$33,832,734.00	With the adoption of GASB statement 84, we created a new special revenue fund for the student sponsored activities that were not deemed fiduciary activities. Implementing this change had the effects on the beginning fund balances and net position.
30160	Federal IDEA revenue has been reported in revenue code 8512 or 8513 rather than in code 6832 as pass thru funds. Please make corrections or provide an explanation. REV8512: \$23,902.00 REV8513: \$0.00	Per PDE and the Audit Confirm, COVID19 SECIM cost should be charged to the 8512 account code.
42420	Expenditure Detail: Total current year 2700-513 expenditure varies from prior year by 10%. Correct the data or enter a justification. 2700-513, AFR Exp Detail: \$2,295,265.40 2700-513, PY AFR Amount: \$2,028,754.73	Students were not transported a full year during the 19/20 school year.
50480	SESS - 2700 Student Transportation Services: SESS Schedule amounts for Special Education vary from prior year by 40% or more. Correct the data or enter a justification. SESS Schedule 2700: \$763,305.26 Prior Year SESS Schedule 2700: \$521,136.20	Yellow Breeches increased their cost for transportation. Daily transport of student to Vanguard school via turnpike with daily tolls. Added 1 bus & aide for our special needs students for the 20-21 year.

Amounts Expressed in Whole Dollars	<u>General Fund</u> <u>(10)</u>	<u>Student Sponsored</u> <u>Activity Fund</u> <u>(21)</u>	<u>Public Purpose Trust</u> <u>(27)</u>	<u>Other Compt Approved</u> <u>(28)</u>	<u>Athletic / Activity</u> <u>(29)</u>
Assets And Deferred Outflows Of Resources					
Assets					
0100 Cash and Cash Equivalents	22,894,180	82,831			
0110 Investments	3,061,565				
0120 Taxes Receivable	1,291,781				
0130 Due From Other Funds	12,567				
0141 Due From Other Governments	2,957,549				
0142 State Revenue Receivable					
0143 Federal Revenue Receivable					
0145 Other Intergovernmental Revenue Receivable					
0146 Due from Primary Government					
0147 Due from Component Unit					
0150 Other Receivables	339,134				
0170 Inventories	49,812				
0180 Prepaid Expenses (Expenditures)	86,446				
0190 Other Current Assets					
Total Assets	\$30,693,034	\$82,831			
0910 Deferred Outflows of Resources					
Total Assets And Deferred Outflows Of Resources	\$30,693,034	\$82,831			

Amounts Expressed in Whole Dollars

<u>Capital Reserve (690.</u>	<u>Capital Reserve (1431)</u>	<u>Other Capital Projects</u>	<u>Debt Service</u>	<u>Permanent</u>
<u>1850)</u>	<u>(32)</u>	<u>Fund</u>	<u>(40)</u>	<u>(90)</u>
<u>(31)</u>		<u>(39)</u>		

Assets And Deferred Outflows Of Resources

Assets

0100 Cash and Cash Equivalents		10,819,241
0110 Investments		32,401
0120 Taxes Receivable		
0130 Due From Other Funds		3,000,000
0141 Due From Other Governments		
0142 State Revenue Receivable		
0143 Federal Revenue Receivable		
0145 Other Intergovernmental Revenue Receivable		
0146 Due from Primary Government		
0147 Due from Component Unit		
0150 Other Receivables		
0170 Inventories		
0180 Prepaid Expenses (Expenditures)		
0190 Other Current Assets		

Total Assets	\$13,851,642
---------------------	---------------------

0910 Deferred Outflows of Resources

Total Assets And Deferred Outflows Of Resources	\$13,851,642
--	---------------------

Amounts Expressed in Whole Dollars

Total Governmental Funds

Assets And Deferred Outflows Of Resources

Assets	
0100 Cash and Cash Equivalents	33,796,252
0110 Investments	3,093,966
0120 Taxes Receivable	1,291,781
0130 Due From Other Funds	3,012,567
0141 Due From Other Governments	2,957,549
0142 State Revenue Receivable	
0143 Federal Revenue Receivable	
0145 Other Intergovernmental Revenue Receivable	
0146 Due from Primary Government	
0147 Due from Component Unit	
0150 Other Receivables	339,134
0170 Inventories	49,812
0180 Prepaid Expenses (Expenditures)	86,446
0190 Other Current Assets	
Total Assets	\$44,627,507
0910 Deferred Outflows of Resources	
Total Assets And Deferred Outflows Of Resources	\$44,627,507

Amounts Expressed in Whole Dollars

	<u>General Fund</u> <u>(10)</u>	<u>Student Sponsored</u> <u>Activity Fund</u> <u>(21)</u>	<u>Public Purpose Trust</u> <u>(27)</u>	<u>Other Compt Approved</u> <u>(28)</u>	<u>Athletic / Activity</u> <u>(29)</u>
Liabilities And Deferred Inflows Of Resources And Fund Balances					
Liabilities					
0400 Due to Other Funds	3,250,203	156			
0411 Due to Other Governments	615,470				
0412 Due to Primary Government					
0413 Due to Component Unit					
0420 Accounts Payable	114,733				
0430 Contracts Payable					
0440 Current Portion of Long-Term Debt					
0450 Short-Term Payables					
0461 Accrued Salaries and Benefits	6,619,310				
0462 Payroll Deductions and Withholding					
0480 Unearned Revenues	242,536				
0490 Other Current Liabilities	67,744				
Total Liabilities	\$10,909,996	\$156			
0950 Deferred Inflows of Resources	394,272				
Fund Balances					
0810 Nonspendable Fund Balance	136,258				
0820 Restricted Fund Balance					
0830 Committed Fund Balance	11,820,000				
0840 Assigned Fund Balance	2,000,000	82,675			
0850 Unassigned Fund Balance	5,432,508				
Total Fund Balances	\$19,388,766	\$82,675			
Total Liabilities, Deferred Inflows Of Resources And Fund Balances	\$30,693,034	\$82,831			

Amounts Expressed in Whole Dollars

<u>Capital Reserve (690.</u>	<u>Capital Reserve (1431)</u>	<u>Other Capital Projects</u>	<u>Debt Service</u>	<u>Permanent</u>
<u>1850)</u>	<u>(32)</u>	<u>Fund</u>	<u>(40)</u>	<u>(90)</u>
<u>(31)</u>		<u>(39)</u>		

Liabilities And Deferred Inflows Of Resources And Fund Balances

Liabilities

0400 Due to Other Funds	
0411 Due to Other Governments	
0412 Due to Primary Government	
0413 Due to Component Unit	
0420 Accounts Payable	1,239,923
0430 Contracts Payable	
0440 Current Portion of Long-Term Debt	
0450 Short-Term Payables	
0461 Accrued Salaries and Benefits	
0462 Payroll Deductions and Withholding	
0480 Unearned Revenues	
0490 Other Current Liabilities	

Total Liabilities	\$1,239,923
--------------------------	--------------------

0950 Deferred Inflows of Resources

Fund Balances

0810 Nonspendable Fund Balance	
0820 Restricted Fund Balance	
0830 Committed Fund Balance	
0840 Assigned Fund Balance	12,611,719
0850 Unassigned Fund Balance	

Total Fund Balances	\$12,611,719
----------------------------	---------------------

Total Liabilities, Deferred Inflows Of Resources And Fund Balances	\$13,851,642
---	---------------------

LEA : 113361303 Cocalico SD

Printed 11/9/2021 11:20:20 AM

Amounts Expressed in Whole Dollars

Total Governmental Funds

Liabilities And Deferred Inflows Of Resources And Fund Balances

Liabilities

0400 Due to Other Funds	3,250,359
0411 Due to Other Governments	615,470
0412 Due to Primary Government	
0413 Due to Component Unit	
0420 Accounts Payable	1,354,656
0430 Contracts Payable	
0440 Current Portion of Long-Term Debt	
0450 Short-Term Payables	
0461 Accrued Salaries and Benefits	6,619,310
0462 Payroll Deductions and Withholding	
0480 Unearned Revenues	242,536
0490 Other Current Liabilities	67,744

Total Liabilities \$12,150,075

0950 Deferred Inflows of Resources	394,272
------------------------------------	---------

Fund Balances

0810 Nonspendable Fund Balance	136,258
0820 Restricted Fund Balance	
0830 Committed Fund Balance	11,820,000
0840 Assigned Fund Balance	14,694,394
0850 Unassigned Fund Balance	5,432,508

Total Fund Balances \$32,083,160

Total Liabilities, Deferred Inflows Of Resources And Fund Balances \$44,627,507

Amounts Expressed in Whole Dollars	<u>General Fund</u> <u>(10)</u>	<u>Student Sponsored</u> <u>Activity Fund</u> <u>(21)</u>	<u>Public Purpose Trust</u> <u>(27)</u>	<u>Other Compt Approved</u> <u>(28)</u>	<u>Athletic / Activity</u> <u>(29)</u>
Revenues					
6000 Revenue from Local Sources	41,107,178	36,907			
7000 Revenue from State Sources	17,993,948				
8000 Revenue from Federal Sources	1,124,298				
Total Revenues	\$60,225,424	\$36,907			
Expenditures					
1000 Instruction	37,821,907				
2000 Support Services	17,365,438				
3000 Operation of Non-Instructional Services	1,009,028	14,878			
4000 Facilities Acquisition, Construction and Improvement Services					
5110 Debt Service	365,299				
5130 Refund of Prior Year Revenues / Receipts					
Total Expenditures	\$56,561,672	\$14,878			
Excess (Deficiency) Of Revenues Over Expenditures	\$3,663,752	\$22,029			
Other Financing Sources (Uses)					
9110 Face Value of Bonds Issued					
9120 Proceeds from Refunding of Bonds					
9130 Bond Premiums					
9200 Proceeds from Extended-Term Financing	366,130				
9300 Interfund Transfers - IN					
9400 Sale of or Compensation for Loss of Fixed Assets	36,709				
9710 Transfers from Component Units					
9720 Transfers from Primary Governments					
9910 Other Financing Sources Not Listed in the 9000 Series					
9990 Insurance Recoveries	13,854				
5120 Debt Service – Refunded Bonds					
5150 Bond Discounts					
5200 Interfund Transfers – Out	4,219,980				
5300 Transfers Out to Component Units/Primary Governments					
Total Other Financing Sources (Uses)	(\$3,803,287)				

Amounts Expressed in Whole Dollars	<u>Capital Reserve (690.1850)</u> <u>(31)</u>	<u>Capital Reserve (1431)</u> <u>(32)</u>	<u>Other Capital Projects</u> <u>Fund</u> <u>(39)</u>	<u>Debt Service</u> <u>(40)</u>	<u>Permanent</u> <u>(90)</u>
Revenues					
6000 Revenue from Local Sources		9,651			
7000 Revenue from State Sources					
8000 Revenue from Federal Sources					
Total Revenues		\$9,651			
Expenditures					
1000 Instruction					
2000 Support Services		377,141		500	
3000 Operation of Non-Instructional Services					
4000 Facilities Acquisition, Construction and Improvement Services		4,338,622			
5110 Debt Service				1,206,082	
5130 Refund of Prior Year Revenues / Receipts					
Total Expenditures		\$4,715,763		\$1,206,582	
Excess (Deficiency) Of Revenues Over Expenditures		(\$4,706,112)		(\$1,206,582)	
Other Financing Sources (Uses)					
9110 Face Value of Bonds Issued					
9120 Proceeds from Refunding of Bonds					
9130 Bond Premiums					
9200 Proceeds from Extended-Term Financing					
9300 Interfund Transfers - IN		3,013,398		1,206,582	
9400 Sale of or Compensation for Loss of Fixed Assets					
9710 Transfers from Component Units					
9720 Transfers from Primary Governments					
9910 Other Financing Sources Not Listed in the 9000 Series					
9990 Insurance Recoveries					
5120 Debt Service – Refunded Bonds					
5150 Bond Discounts					
5200 Interfund Transfers – Out					
5300 Transfers Out to Component Units/Primary Governments					
Total Other Financing Sources (Uses)		\$3,013,398		\$1,206,582	

Amounts Expressed in Whole Dollars	<u>Total Governmental Funds</u>
Revenues	
6000 Revenue from Local Sources	41,153,736
7000 Revenue from State Sources	17,993,948
8000 Revenue from Federal Sources	1,124,298
Total Revenues	\$60,271,982
Expenditures	
1000 Instruction	37,821,907
2000 Support Services	17,743,079
3000 Operation of Non-Instructional Services	1,023,906
4000 Facilities Acquisition, Construction and Improvement Services	4,338,622
5110 Debt Service	1,571,381
5130 Refund of Prior Year Revenues / Receipts	
Total Expenditures	\$62,498,895
Excess (Deficiency) Of Revenues Over Expenditures	(\$2,226,913)
Other Financing Sources (Uses)	
9110 Face Value of Bonds Issued	
9120 Proceeds from Refunding of Bonds	
9130 Bond Premiums	
9200 Proceeds from Extended-Term Financing	366,130
9300 Interfund Transfers - IN	4,219,980
9400 Sale of or Compensation for Loss of Fixed Assets	36,709
9710 Transfers from Component Units	
9720 Transfers from Primary Governments	
9910 Other Financing Sources Not Listed in the 9000 Series	
9990 Insurance Recoveries	13,854
5120 Debt Service – Refunded Bonds	
5150 Bond Discounts	
5200 Interfund Transfers – Out	4,219,980
5300 Transfers Out to Component Units/Primary Governments	
Total Other Financing Sources (Uses)	\$416,693

Amounts Expressed in Whole Dollars	<u>General Fund</u> <u>(10)</u>	<u>Student Sponsored</u> <u>Activity Fund</u> <u>(21)</u>	<u>Public Purpose Trust</u> <u>(27)</u>	<u>Other Compt Approved</u> <u>(28)</u>	<u>Athletic / Activity</u> <u>(29)</u>
Special And Extraordinary Items					
9920 Special Items – Gains					
9930 Extraordinary Items – Gains					
5520 Special Items – Losses					
5530 Extraordinary Items – Losses					
Net Change In Fund Balances	(\$139,535)	\$22,029			
Fund Balance					
0001 Fund Balance - Beginning of Fiscal Year	19,528,301	60,646			
Fund Balance - End Of Year	\$19,388,766	\$82,675			

Amounts Expressed in Whole Dollars	<u>Capital Reserve (690.</u> <u>1850)</u> <u>(31)</u>	<u>Capital Reserve (1431)</u> <u>(32)</u>	<u>Other Capital Projects</u> <u>Fund</u> <u>(39)</u>	<u>Debt Service</u> <u>(40)</u>	<u>Permanent</u> <u>(90)</u>
Special And Extraordinary Items					
9920 Special Items – Gains					
9930 Extraordinary Items – Gains					
5520 Special Items – Losses					
5530 Extraordinary Items – Losses					
Net Change In Fund Balances					
			(\$1,692,714)		
Fund Balance					
0001 Fund Balance - Beginning of Fiscal Year			14,304,433		
Fund Balance - End Of Year					
			\$12,611,719		

Amounts Expressed in Whole Dollars	<u>Total Governmental Funds</u>
Special And Extraordinary Items	
9920 Special Items – Gains	
9930 Extraordinary Items – Gains	
5520 Special Items – Losses	
5530 Extraordinary Items – Losses	
Net Change In Fund Balances	(\$1,810,220)
Fund Balance	
0001 Fund Balance - Beginning of Fiscal Year	33,893,380
Fund Balance - End Of Year	\$32,083,160

Amounts Expressed in Whole Dollars	<u>Food Service</u> <u>(51)</u>	<u>Child Care</u> <u>Operations</u> <u>(52)</u>	<u>Other Enterprise</u> <u>(58)</u>	<u>TOTAL</u>	<u>Internal Service</u> <u>(60)</u>
Assets And Deferred Outflows Of Resources					
Current Assets					
0100 Cash and Cash Equivalents	333,829			333,829	551,038
0110 Investments	159,683			159,683	
0130 Due From Other Funds	678			678	250,000
0141 Due From Other Governments	86,715			86,715	
0142 State Revenue Receivable					
0143 Federal Revenue Receivable					
0146 Due from Primary Government					
0147 Due from Component Unit					
0150 Other Receivables	1,875			1,875	
0170 Inventories	104,753			104,753	
0180 Prepaid Expenses (Expenditures)	50			50	
0190 Other Current Assets					
Total Current Assets	\$687,583			\$687,583	\$801,038
Noncurrent Assets					
0211 Land					
0212 Site Improvements (Net)					
0220 Buildings and Building Improvements (Net)					
0230 Machinery, Equipment and Furniture (Net)	43,468			43,468	
0250 Construction in Progress					
0260 Long Term Prepayments					
0290 Other Noncurrent Assets					
Total Noncurrent Assets	\$43,468			\$43,468	
0910 Deferred Outflows of Resources	353,000			353,000	
Total Assets And Deferred Outflows Of Resources	\$1,084,051			\$1,084,051	\$801,038

Amounts Expressed in Whole Dollars	<u>Food Service</u> <u>(51)</u>	<u>Child Care</u> <u>Operations</u> <u>(52)</u>	<u>Other Enterprise</u> <u>(58)</u>	<u>TOTAL</u>	<u>Internal Service</u> <u>(60)</u>
Liabilities And Deferred Inflows Of Resources And Net Position					
Current Liabilities					
0400 Due to Other Funds	12,567			12,567	
0411 Due to Other Governments					
0413 Due to Component Unit					
0420 Accounts Payable	6,415			6,415	
0430 Contracts Payable					
0440 Current Portion of Long-Term Debt	8,700			8,700	
0450 Short-Term Payables					
0461 Accrued Salaries and Benefits					
0462 Payroll Deductions and Withholding					
0480 Unearned Revenues	129,236			129,236	
0490 Other Current Liabilities	12,328			12,328	631,787
Total Current Liabilities	\$169,246			\$169,246	\$631,787
Noncurrent Liabilities					
0510 Bonds Payable					
0520 Extended-Term Financing Agreements Payable					
0530 Lease-Purchase Obligations					
0540 Accumulated Compensated Absences	78,113			78,113	
0550 Authority Lease Obligations					
0560 Other Post-Employment Benefits (OPEB)	173,000			173,000	
0570 Net Pension Liability	1,733,000			1,733,000	
0599 Other Noncurrent Liabilities					
Total Noncurrent Liabilities	\$1,984,113			\$1,984,113	
Total Liabilities	\$2,153,359			\$2,153,359	\$631,787
0950 Deferred Inflows of Resources	61,000			61,000	
Net Position					
0791 Net Investment in Capital Assets	43,468			43,468	
0008 Restricted Net Position (0792 – 0798)					169,251
0799 Unrestricted Net Position	(1,173,776)			(1,173,776)	
Total Net Position	(\$1,130,308)			(\$1,130,308)	\$169,251
Total Liabilities And Deferred Inflows Of Resources And Net Position	\$1,084,051			\$1,084,051	\$801,038

Amounts Expressed in Whole Dollars	<u>Food Service</u> <u>(51)</u>	<u>Child Care Operations</u> <u>(52)</u>	<u>Other Enterprise</u> <u>(58)</u>	<u>TOTAL</u>	<u>Internal Service</u> <u>(60)</u>
Operating Revenues					
6600 Food Service Revenue	185,615			185,615	
0071 Charges for Services					6,750,000
0072 Other Operating Revenue					
Total Operating Revenues	\$185,615			\$185,615	\$6,750,000
Operating Expenses					
100 Personnel Services – Salaries	488,339			488,339	
200 Personnel Services – Employee Benefits	348,192			348,192	6,795,487
300 Purchased Professional and Technical Services	1,548			1,548	
400 Purchased Property Services	751			751	
500 Other Purchased Services					
600 Supplies	604,720			604,720	
740 Depreciation	5,572			5,572	
810 Dues and Fees					
880 Refunds of Prior Years' Receipts					
890 Miscellaneous Expenditures	1,112			1,112	
Total Operating Expenses	\$1,450,234			\$1,450,234	\$6,795,487
Operating Income (Loss)	(\$1,264,619)			(\$1,264,619)	(\$45,487)
Non Operating Revenues (Expenses)					
6500 Earnings on Investments	272			272	408
6920 Contributions and Donations from Private Sources					
6930 Gains or Losses on Sale of Fixed Assets					
6991 Refunds of a Prior Year Expenditure					
7000 Revenue from State Sources	132,338			132,338	
8000 Revenue from Federal Sources	1,149,293			1,149,293	
9990 Insurance Recoveries					
820 Claims and Judgments Against the LEA					
830 Interest					
TOTAL Non Operating Revenues (Expenses)	\$1,281,903			\$1,281,903	\$408
Income (Loss) Before Contributions And Transfers	\$17,284			\$17,284	(\$45,079)

Amounts Expressed in Whole Dollars	<u>Food Service</u> <u>(51)</u>	<u>Child Care Operations</u> <u>(52)</u>	<u>Other Enterprise</u> <u>(58)</u>	<u>TOTAL</u>	<u>Internal Service</u> <u>(60)</u>
Contributions, Transfers, and Special and Extraordinary Items					
5200 Interfund Transfers – Out					
5300 Transfers Out to Component Units/Primary Governments					
5520 Special Items – Losses					
5530 Extraordinary Items – Losses					
9300 Interfund Transfers - IN					
9500 Capital Contributions					
9700 Transfers IN From Component Units/Primary Governments					
9920 Special Items – Gains					
9930 Extraordinary Items – Gains					
Change In Net Position	\$17,284			\$17,284	(\$45,079)
0002 Net Position - Beginning of Fiscal Year	(1,147,592)			(1,147,592)	214,330
0003 Accounting Changes / Residual Equity Transfers					
Net Position - End Of Year	(\$1,130,308)			(\$1,130,308)	\$169,251

Amounts Expressed in Whole Dollars	<u>Food Service</u> <u>(51)</u>	<u>Child Care Operations</u> <u>(52)</u>	<u>Other Enterprise</u> <u>(58)</u>	<u>TOTAL</u>	<u>Internal Service(60)</u>
Cash Flows From Operating Activities					
0011 Cash Receipts From Users	223,449			223,449	
0012 Cash Receipts From Assessments Made to Other Funds					6,750,000
0013 Cash Receipts From Earnings on Investments					
0014 Cash Receipts From Other Operating Revenue					
0015 Cash Payments To Employees For Services	791,660			791,660	
0016 Cash Payments For Insurance Claims					6,732,825
0017 Cash Payments To Suppliers For Goods and Services	478,447			478,447	
0018 Cash Payments For Other Operating Expenses	1,863			1,863	
Net Cash Provided By (Used For) Operating Activities	(\$1,048,521)			(\$1,048,521)	\$17,175
Cash Flows From Non-Capital Financing Activities					
0021 Receipts From Local Sources - 6000					
0022 Receipts From State Sources - 7000	132,730			132,730	
0023 Receipts From Federal Sources -8000	1,026,292			1,026,292	
0024 Notes and Loans Received (Repaid)					
0025 Interest Paid on Notes/Loans - 5100-830					
0026 Operating Transfers In (Out)/Residual Equity Trans					
0027 Operating Transfers In (Out) Primary Government / Comp Unit					
0028 Receipts From Refund of Prior Year Expenditures - 6991					
0029 Special and Extraordinary Gains (losses)					
0030 Receipts from Insurance Recoveries -9990					
Net Cash Prov By (Used for) Non-Capital Financing Activities	\$1,159,022			\$1,159,022	
Cash Flows From Capital and Related Financing Activities					
0031 Payments For Fac Acq, Const, and Imp - 4000	(24,999)			(24,999)	
0032 Gain / (Loss) on Sale of Fixed Assets - 6930					
0033 Proceeds From Extended Term Financing - 9200					
0034 Principal Paid on Financing Agreements					
0035 Interest Paid on Financing Agreements - 5100-830					
0036 (Inc) Dec in Contributed Capital					
Net Cash Prov By (Used for) Capital and Related Financing Activities	(\$24,999)			(\$24,999)	
Cash Flows From Investing Activities					
0041 Earnings on Investments - 6500	272			272	408
0042 Purchase of Inv Securities / Deposits to Inv Pools	(15)			(15)	
0043 Receipts From Investment Pool Withdrawals					
0044 Proceeds from Sale and Maturity of Inv Securities					

LEA : 113361303 Cocalico SD

Printed 11/9/2021 11:20:42 AM

0045 Loans Received (Paid)

Net Cash Prov By (Used for) Investing Activities	\$257	\$257	\$408
---	--------------	--------------	--------------

	<u>Food Service</u> <u>(51)</u>	<u>Child Care Operations</u> <u>(52)</u>	<u>Other Enterprise</u> <u>(58)</u>	<u>TOTAL</u>	<u>Internal Service</u> <u>(60)</u>
Net Increase (Decrease) in Cash Flows	85,759			85,759	17,583
0004 Cash and Cash Equivalents Beginning of Year	248,070			248,070	533,455
Cash and Cash Equivalents at Year End	\$333,829			\$333,829	\$551,038
<hr/>					
Reconciliation of Operating Income (Loss) To Net Cash Provided by (Used For) Operating Activities					
0005 Operating Income (Loss) per REP	(1,264,619)			(1,264,619)	(45,487)
Adjustments					
0051 Depreciation and Net Amortization	5,572			5,572	
0052 Provision for Uncollectible Accounts					
0053 Other Adjustments					
Effect of Changes in Assets, Liabilities, Deferred Outflows and Deferred Inflows					
0054 (Inc) Dec In Accounts Receivable (0120-0150)	54,416			54,416	
0055 Advances to Other Funds (0160)					(250,000)
0056 (Inc) Dec in Inventories (0170)	11,006			11,006	
0057 (Inc) Dec in Prepaid Expenses (0180)	(50)			(50)	
0058 (Inc) Dec in Other Current or Noncurrent Assets	108,839			108,839	
0064 Deferred Outflows (0910)					
0059 Inc (Dec) in Accounts Payable (0400-0450)	7,130			7,130	
0060 Inc (Dec) in Accrued Salaries/Benefits (0461)					
0065 Inc (Dec) in Net Pension Liabilities (0570)	24,000			24,000	
0066 Inc (Dec) in Other Postemp Benefit Oblig (0560)	4,000			4,000	
0061 Inc (Dec) in Payroll Deductions/Withholding (0462)					
0062 Inc (Dec) in Unearned Revenue (0480)	(15,914)			(15,914)	
0063 Inc (Dec) in Other Current or Noncurrent Liabilities	17,099			17,099	312,662
0067 Deferred Inflows (0950)					
Total Adjustments	\$216,098			\$216,098	\$62,662
Cash Provided By (Used for) Total	(\$1,048,521)			(\$1,048,521)	\$17,175

COMBINED STATEMENT OF CASH FLOWS
SCHEDULE OF NONCASH INVESTING, CAPITAL, AND FINANCING ACTIVITIES

Explanation of Transaction and Balance Sheet Effect	Amount
Total	

LEA : 113361303 Cocalico SD

Printed 11/9/2021 11:20:44 AM

Amounts Expressed in Whole Dollars

Private Purpose Trust
(71)

Investment Trust
(72)

Pension Trust
(73)

Student Activity Custodial
(81)

Assets And Deferred Outflows Of Resources

Assets

0100 Cash and Cash Equivalents					26,805
0110 Investments					
0130 Due From Other Funds					
0140 Due from Other Governments, Primary Government and Component Units					
0150 Other Receivables					
0170 Inventories					
0180 Prepaid Expenses (Expenditures)					
0190 Other Current Assets					
0220 Buildings and Building Improvements (Net)					
0230 Machinery, Equipment and Furniture (Net)					

Total Assets					\$26,805
---------------------	--	--	--	--	-----------------

0910 Deferred Outflows of Resources

Total Assets And Deferred Outflows Of Resources					\$26,805
--	--	--	--	--	-----------------

LEA : 113361303 Cocalico SD

Printed 11/9/2021 11:20:44 AM

Amounts Expressed in Whole Dollars	<u>Private Purpose Trust</u> (71)	<u>Investment Trust</u> (72)	<u>Pension Trust</u> (73)	<u>Student Activity Custodial</u> (81)
Liabilities, Deferred Inflows Of Resources And Net Position				
Liabilities				
0400 Due to Other Funds				319
0410 Due to Other Governments, Primary Government and Component Units				
0420 Accounts Payable				50
0430 Contracts Payable				
0450 Short-Term Payables				
0460 Payroll Accruals and Withholdings				
0480 Unearned Revenues				
0490 Other Current Liabilities				
Total Liabilities				\$369
0950 Deferred Inflows of Resources				
Net Position				
0791 Net Investment in Capital Assets				
0009 Restricted Net Position (0792 – 0798)				26,436
0799 Unrestricted Net Position				
Total Net Position				\$26,436
Total Liabilities, Deferred Inflows Of Resources And Net Position				\$26,805

LEA : 113361303 Cocalico SD

Printed 11/9/2021 11:20:44 AM

Amounts Expressed in Whole Dollars

Other Custodial
(89)

Fiduciary Component Units
(98)

Total Fiduciary Funds

Liabilities, Deferred Inflows Of Resources And Net Position

Liabilities

0400 Due to Other Funds			319
0410 Due to Other Governments, Primary Government and Component Units			
0420 Accounts Payable			50
0430 Contracts Payable			
0450 Short-Term Payables			
0460 Payroll Accruals and Withholdings			
0480 Unearned Revenues			
0490 Other Current Liabilities			

Total Liabilities **\$369**

0950 Deferred Inflows of Resources

Net Position

0791 Net Investment in Capital Assets			
0009 Restricted Net Position (0792 – 0798)			26,436
0799 Unrestricted Net Position			

Total Net Position **\$26,436**

Total Liabilities, Deferred Inflows Of Resources And Net Position **\$26,805**

Amounts Expressed in Whole Dollars	<u>Private Purpose Trust</u> (71)	<u>Investment Trust</u> (72)	<u>Pension Trust</u> (73)	<u>Student Activity</u> <u>Custodial</u> (81)	<u>Other Custodial</u> (89)	<u>Fiduciary Component</u> <u>Units</u> (98)
Additions						
0091 Gifts and Contributions	2,000					
0095 Net Investment Earnings	64					
0092 Other Additions				32,237		
Deductions						
0093 Scholarships Awarded	34,955					
0094 Other Deductions				31,926		
Change In Net Position	(\$32,891)			\$311		
0006 Net Position – Beginning of Fiscal Year	32,891			26,125		
0007 Net Position Held in Trust for Pension Benefits						
Net Position - End of Fiscal Year				\$26,436		

Amounts Expressed in Whole Dollars	<u>Total Fiduciary Funds</u>
Additions	
0091 Gifts and Contributions	2,000
0095 Net Investment Earnings	64
0092 Other Additions	32,237
Deductions	
0093 Scholarships Awarded	34,955
0094 Other Deductions	31,926
Change In Net Position	(\$32,580)
0006 Net Position – Beginning of Fiscal Year	59,016
0007 Net Position Held in Trust for Pension Benefits	
Net Position - End of Fiscal Year	\$26,436

	<u>Revenue Reported In Current Year</u>	<u>Current Year Tax Accrual</u>	<u>Prior Year Tax Accrual</u>	<u>Taxes Collected In Current Year</u>
<u>Revenue from Local Sources</u>				
6111 Current Real Estate Taxes	34,511,540.73			34,511,540.73
6112 Interim Real Estate Taxes	195,814.13			195,814.13
6113 Public Utility Realty Taxes	37,962.92			37,962.92
6114 Payments in Lieu of Current Taxes - State / Local	478.49			478.49
6151 Current Act 511 Earned Income Taxes	3,614,114.21			3,614,114.21
6153 Current Act 511 Real Estate Transfer Taxes	770,062.91			770,062.91
6411 Delinquent Real Estate Taxes	584,496.20			584,496.20
6420 Delinquent Per Capita Taxes, Section 679	99.00			99.00
6500 Earnings on Investments	35,366.86			
6700 Revenues from LEA Activities	9,244.67			
6821 State Revenue Received from Other Pennsylvania Public LEAs	128,583.00			
6831 Federal Revenue Received from Other Pennsylvania Public LEAs	100,566.34			
6832 Federal IDEA Revenue Received as Pass Through	676,596.00			
6839 Federal Revenue Received from Other Sources	303,843.00			
6910 Rentals	16,352.79			
6920 Contributions and Donations from Private Sources	16,210.74			
6942 Summer School Tuition	9,962.50			
6944 Receipts from Other LEAs in Pennsylvania - Education	16,196.90			
6991 Refunds of a Prior Year Expenditure	24,337.82			
6999 Other Revenues Not Specified Above	55,348.93			
TOTAL Revenue from Local Sources	\$41,107,178.14			\$39,714,568.59

**Revenue Reported
In Current Year**

Revenue from State Sources

7111 Basic Education Funding-Formula	7,648,202.93		
7112 Basic Education Funding-Social Security	1,221,249.06		
7160 Tuition for Orphans Subsidy	39,028.79		
7250 Migratory Children	40.00		
7271 Special Education funds for School-Aged Pupils	1,870,680.35		
7311 Pupil Transportation Subsidy	865,327.10		
7312 Nonpublic and Charter School Pupil Transportation Subsidy	105,490.00		
7320 Rental and Sinking Fund Payments / Building Reimbursement Subsidy	66,541.78		
7330 Health Services (Medical, Dental, Nurse, Act 25)	53,416.39		
7340 State Property Tax Reduction Allocation	1,109,819.68		
7505 Ready to Learn Block Grant	400,960.00		
7506 PAsmart Grants	31,345.00		
7599 Other State Revenue Not Listed Elsewhere in the 7000 Series	219,102.01		
7820 State Share of Retirement Contributions	4,362,744.41		
TOTAL Revenue from State Sources	\$17,993,947.50		

**Revenue Reported
In Current Year**

Revenue from Federal Sources

8512 IDEA, Part B	23,902.00		
8514 NCLB, Title I - Improving the Academic Achievement of the Disadvantaged	329,014.82		
8515 NCLB, Title II - Preparing, Training and Recruiting High Quality Teachers and Principals	83,086.44		
8516 NCLB, Title III - Language Instruction for Limited English Proficient and Immigrant Students	12,314.38		
8517 NCLB, Title IV - 21st Century Schools	31,718.00		
8741 Elementary and Secondary School Emergency Relief Fund (ESSER)	288,849.45		
8749 Other CARES Act Funding	225,361.00		
8810 School-Based Access Medicaid Reimbursement Program (SBAP) Reimbursements (Access)	111,301.58		
8820 Medical Assistance Reimbursement for Administrative Claiming (Quarterly) Program	18,749.87		
TOTAL Revenue from Federal Sources	\$1,124,297.54		

**Revenue Reported
In Current Year**

Other Financing Sources

9290 Other Extended-Term Financing Proceeds	366,130.00		
9400 Sale of or Compensation for Loss of Fixed Assets	36,709.00		
9990 Insurance Recoveries	13,853.99		
TOTAL Other Financing Sources	\$416,692.99		
TOTAL FROM ALL SOURCES	\$60,642,116.17		\$39,714,568.59

LEA : 113361303 Cocalico SD

Printed 11/9/2021 11:20:53 AM

	<u>General Fund (10)</u>	<u>Student Sponsored Activity Fund (21)</u>	<u>Public Purpose Trust (27)</u>	<u>Other Compt Approved (28)</u>	<u>Athletic / Activity (29)</u>	<u>Capital Reserve (690, 1850) (31)</u>
6000 Revenue from Local Sources						
6111 Current Real Estate Taxes	34,511,540.73					
6112 Interim Real Estate Taxes	195,814.13					
6113 Public Utility Realty Taxes	37,962.92					
6114 Payments in Lieu of Current Taxes - State / Local	478.49					
6151 Current Act 511 Earned Income Taxes	3,614,114.21					
6153 Current Act 511 Real Estate Transfer Taxes	770,062.91					
6411 Delinquent Real Estate Taxes	584,496.20					
6420 Delinquent Per Capita Taxes, Section 679	99.00					
6500 Earnings on Investments	35,366.86	21.26				
6700 Revenues from LEA Activities	9,244.67					
6821 State Revenue Received from Other Pennsylvania Public LEAs	128,583.00					
6831 Federal Revenue Received from Other Pennsylvania Public LEAs	100,566.34					
6832 Federal IDEA Revenue Received as Pass Through	676,596.00					
6839 Federal Revenue Received from Other Sources	303,843.00					
6910 Rentals	16,352.79					
6920 Contributions and Donations from Private Sources	16,210.74	8,739.60				
6942 Summer School Tuition	9,962.50					
6944 Receipts from Other LEAs in Pennsylvania - Education	16,196.90					
6991 Refunds of a Prior Year Expenditure	24,337.82	16,532.85				
6999 Other Revenues Not Specified Above	55,348.93	11,613.29				
6000 Total Revenue from Local Sources	\$41,107,178.14	\$36,907.00				
7000 Revenue from State Sources						
7111 Basic Education Funding-Formula	7,648,202.93					
7112 Basic Education Funding-Social Security	1,221,249.06					
7160 Tuition for Orphans Subsidy	39,028.79					
7250 Migratory Children	40.00					
7271 Special Education funds for School-Aged Pupils	1,870,680.35					
7311 Pupil Transportation Subsidy	865,327.10					
7312 Nonpublic and Charter School Pupil Transportation Subsidy	105,490.00					
7320 Rental and Sinking Fund Payments / Building Reimbursement Subsidy	66,541.78					
7330 Health Services (Medical, Dental, Nurse, Act 25)	53,416.39					
7340 State Property Tax Reduction Allocation	1,109,819.68					
7505 Ready to Learn Block Grant	400,960.00					
7506 PAsmart Grants	31,345.00					
7599 Other State Revenue Not Listed Elsewhere in the 7000 Series	219,102.01					

LEA : 113361303 Cocalico SD

Printed 11/9/2021 11:20:53 AM

	<u>Capital Reserve</u> <u>(1431) (32)</u>	<u>Other Capital</u> <u>Projects Fund (39)</u>	<u>Debt Service (40)</u>	<u>Permanent (90)</u>	<u>Total</u>
6000 Revenue from Local Sources					
6111 Current Real Estate Taxes					34,511,540.73
6112 Interim Real Estate Taxes					195,814.13
6113 Public Utility Realty Taxes					37,962.92
6114 Payments in Lieu of Current Taxes - State / Local					478.49
6151 Current Act 511 Earned Income Taxes					3,614,114.21
6153 Current Act 511 Real Estate Transfer Taxes					770,062.91
6411 Delinquent Real Estate Taxes					584,496.20
6420 Delinquent Per Capita Taxes, Section 679					99.00
6500 Earnings on Investments	9,650.90				45,039.02
6700 Revenues from LEA Activities					9,244.67
6821 State Revenue Received from Other Pennsylvania Public LEAs					128,583.00
6831 Federal Revenue Received from Other Pennsylvania Public LEAs					100,566.34
6832 Federal IDEA Revenue Received as Pass Through					676,596.00
6839 Federal Revenue Received from Other Sources					303,843.00
6910 Rentals					16,352.79
6920 Contributions and Donations from Private Sources					24,950.34
6942 Summer School Tuition					9,962.50
6944 Receipts from Other LEAs in Pennsylvania - Education					16,196.90
6991 Refunds of a Prior Year Expenditure					40,870.67
6999 Other Revenues Not Specified Above					66,962.22
6000 Total Revenue from Local Sources	\$9,650.90				\$41,153,736.04
7000 Revenue from State Sources					
7111 Basic Education Funding-Formula					7,648,202.93
7112 Basic Education Funding-Social Security					1,221,249.06
7160 Tuition for Orphans Subsidy					39,028.79
7250 Migratory Children					40.00
7271 Special Education funds for School-Aged Pupils					1,870,680.35
7311 Pupil Transportation Subsidy					865,327.10
7312 Nonpublic and Charter School Pupil Transportation Subsidy					105,490.00
7320 Rental and Sinking Fund Payments / Building Reimbursement Subsidy					66,541.78
7330 Health Services (Medical, Dental, Nurse, Act 25)					53,416.39
7340 State Property Tax Reduction Allocation					1,109,819.68
7505 Ready to Learn Block Grant					400,960.00
7506 PAsmart Grants					31,345.00
7599 Other State Revenue Not Listed Elsewhere in the 7000 Series					219,102.01

	<u>General Fund (10)</u>	<u>Student Sponsored Activity Fund (21)</u>	<u>Public Purpose Trust (27)</u>	<u>Other Compt Approved (28)</u>	<u>Athletic / Activity (29)</u>	<u>Capital Reserve (690.1850) (31)</u>
7000 Revenue from State Sources						
7820 State Share of Retirement Contributions	4,362,744.41					
7000 Total Revenue from State Sources	\$17,993,947.50					
8000 Revenue from Federal Sources						
8512 IDEA, Part B	23,902.00					
8514 NCLB, Title I - Improving the Academic Achievement of the Disadvantaged	329,014.82					
8515 NCLB, Title II - Preparing, Training and Recruiting High Quality Teachers and Principals	83,086.44					
8516 NCLB, Title III - Language Instruction for Limited English Proficient and Immigrant Students	12,314.38					
8517 NCLB, Title IV - 21st Century Schools	31,718.00					
8741 Elementary and Secondary School Emergency Relief Fund (ESSER)	288,849.45					
8749 Other CARES Act Funding	225,361.00					
8810 School-Based Access Medicaid Reimbursement Program (SBAP) Reimbursements (Access)	111,301.5€					
8820 Medical Assistance Reimbursement for Administrative Claiming (Quarterly) Program	18,749.87					
8000 Total Revenue from Federal Sources	\$1,124,297.54					
9000 Other Financing Sources						
9290 Other Extended-Term Financing Proceeds	366,130.00					
9310 General Fund Transfers						
9400 Sale of or Compensation for Loss of Fixed Assets	36,709.00					
9990 Insurance Recoveries	13,853.99					
9000 Total Other Financing Sources	\$416,692.99					
Total From All Sources	\$60,642,116.17	\$36,907.00				

	<u>Capital Reserve</u> <u>(1431) (32)</u>	<u>Other Capital</u> <u>Projects Fund (39)</u>	<u>Debt Service (40)</u>	<u>Permanent (90)</u>	<u>Total</u>
7000 Revenue from State Sources					
7820 State Share of Retirement Contributions					4,362,744.41
7000 Total Revenue from State Sources					\$17,993,947.50
8000 Revenue from Federal Sources					
8512 IDEA, Part B					23,902.00
8514 NCLB, Title I - Improving the Academic Achievement of the Disadvantaged					329,014.82
8515 NCLB, Title II - Preparing, Training and Recruiting High Quality Teachers and Principals					83,086.44
8516 NCLB, Title III - Language Instruction for Limited English Proficient and Immigrant Students					12,314.38
8517 NCLB, Title IV - 21st Century Schools					31,718.00
8741 Elementary and Secondary School Emergency Relief Fund (ESSER)					288,849.45
8749 Other CARES Act Funding					225,361.00
8810 School-Based Access Medicaid Reimbursement Program (SBAP) Reimbursements (Access)					111,301.58
8820 Medical Assistance Reimbursement for Administrative Claiming (Quarterly) Program					18,749.87
8000 Total Revenue from Federal Sources					\$1,124,297.54
9000 Other Financing Sources					
9290 Other Extended-Term Financing Proceeds					366,130.00
9310 General Fund Transfers	3,013,398.32		1,206,582.02		4,219,980.34
9400 Sale of or Compensation for Loss of Fixed Assets					36,709.00
9990 Insurance Recoveries					13,853.99
9000 Total Other Financing Sources	\$3,013,398.32		\$1,206,582.02		\$4,636,673.33
Total From All Sources	\$3,023,049.22		\$1,206,582.02		\$64,908,654.41

	<u>General Fund (10)</u>	<u>Student Sponsored Activity Fund (21)</u>	<u>Public Purpose Trust (27)</u>	<u>Other Compt Approved (28)</u>	<u>Athletic / Activity (29)</u>	<u>Capital Reserve (690. 1850) (31)</u>
Revenue from Local Sources	41,107,178.14	36,907.00				
Revenue from State Sources	17,993,947.50					
Revenue from Federal Sources	1,124,297.54					
Other Financing Sources	416,692.99					
Total From All Sources	\$60,642,116.17	\$36,907.00				

	<u>Capital Reserve (1431)</u> <u>(32)</u>	<u>Other Capital Projects</u> <u>Fund (39)</u>	<u>Debt Service (40)</u>	<u>Permanent (90)</u>	<u>Total</u>
Revenue from Local Sources	9,650.90				41,153,736.04
Revenue from State Sources					17,993,947.50
Revenue from Federal Sources					1,124,297.54
Other Financing Sources	3,013,398.32		1,206,582.02		4,636,673.33
Total From All Sources	\$3,023,049.22		\$1,206,582.02		\$64,908,654.41

General Fund (10)

	<u>Total</u>
1000 Instruction	
100 Personnel Services – Salaries	
100 Personnel Services – Salaries	17,671,729.78
Total Personnel Services – Salaries	\$17,671,729.78
200 Personnel Services – Employee Benefits	
210 Group Insurance – Contracted Provider	26,096.70
220 Social Security Contributions	1,300,589.07
230 PSERS Retirement Contributions	6,138,113.53
250 Unemployment Compensation	10,115.30
260 Workers’ Compensation	138,312.56
270 Group Insurance – Self-Insurance	3,224,978.96
299 All Other Employee Benefits	46,880.00
Total Personnel Services – Employee Benefits	\$10,885,086.12
300 Purchased Professional and Technical Services	
322 Professional Educational Services – Ius	2,981,170.56
323 Professional Educational Services – Other Educational Agencies	35,162.50
329 Professional Educational Services – Other	455,553.49
330 Other Professional Services	1,223.66
Total Purchased Professional and Technical Services	\$3,473,110.21
400 Purchased Property Services	
430 Repairs and Maintenance Services	66,471.90
440 Rentals	61,361.47
Total Purchased Property Services	\$127,833.37
500 Other Purchased Services	
510 Student Transportation Services	12,581.29
561 Tuition To Other School Districts Within the State	431,167.40
562 Tuition To Pennsylvania Charter Schools	1,915,514.47
563 Tuition To Nonpublic Schools	470,979.00
564 Tuition To Career and Technology Centers	1,116,085.63
567 Tuition To Approved Private Schools (APS) and PA Chartered Schools for the Deaf and Blind	54,944.12
568 Tuition To Private Residential Rehabilitative Institutions (PRRI) [In-State] and Detention Centers	142,878.20
569 Tuition – Other	60,961.62
580 Travel	1,116.08
594 IU Payment By Withholding for Institutionalized Children’s Programs – Special Classes	1,247.16
Total Other Purchased Services	\$4,207,474.97
600 Supplies	
610 General Supplies	399,024.26
640 Books and Periodicals	33,964.17
650 Supplies & Fees – Technology Related	568,699.12
Total Supplies	\$1,001,687.55
700 Property	
752 Capital Equipment – Original and Additional	2,777.60
756 Capitalized Technology Equipment– Original	389,143.76
762 Capitalized Equipment - Replacement	18,882.64

General Fund (10)

1000 Instruction	<u>Total</u>
700 Property	
766 Capitalized Technology Equipment – Replacement	39,029.00
Total Property	\$449,833.00
800 Other Objects	
810 Dues and Fees	5,002.00
890 Miscellaneous Expenditures	150.00
Total Other Objects	\$5,152.00
Total 1000 Instruction	\$37,821,907.00

General Fund (10)

1100 Regular Programs – Elementary / Secondary

	<u>Elementary</u>	<u>Secondary</u>	<u>Federal</u>	<u>Total</u>
100 Personnel Services – Salaries				
100 Personnel Services – Salaries	6,058,878.29	8,253,076.37	248,412.58	14,560,367.24
Total Personnel Services – Salaries	\$6,058,878.29	\$8,253,076.37	\$248,412.58	\$14,560,367.24
200 Personnel Services – Employee Benefits				
210 Group Insurance – Contracted Provider	9,246.24	12,309.66	418.50	21,974.40
220 Social Security Contributions	445,335.80	606,202.14	18,430.46	1,069,968.40
230 PSERS Retirement Contributions	2,141,853.79	2,880,200.00	45,229.30	5,067,283.09
250 Unemployment Compensation	536.64	1,352.58		1,889.22
260 Workers' Compensation	47,421.43	64,594.93	1,944.28	113,960.64
270 Group Insurance – Self-Insurance	1,097,452.54	1,533,277.17	52,768.08	2,683,497.79
299 All Other Employee Benefits	24,075.00	22,805.00		46,880.00
Total Personnel Services – Employee Benefits	\$3,765,921.44	\$5,120,741.48	\$118,790.62	\$9,005,453.54
300 Purchased Professional and Technical Services				
329 Professional Educational Services – Other	153,650.81	197,675.15	3,091.60	354,417.56
330 Other Professional Services	0.25	49.75	1,173.66	1,223.66
Total Purchased Professional and Technical Services	\$153,651.06	\$197,724.90	\$4,265.26	\$355,641.22
400 Purchased Property Services				
430 Repairs and Maintenance Services	29,234.70	37,237.20		66,471.90
Total Purchased Property Services	\$29,234.70	\$37,237.20		\$66,471.90
500 Other Purchased Services				
510 Student Transportation Services	371.65	814.90		1,186.55
561 Tuition To Other School Districts Within the State		18,001.80		18,001.80
562 Tuition To Pennsylvania Charter Schools	567,361.39	779,413.30		1,346,774.69
568 Tuition To Private Residential Rehabilitative Institutions (PRRI) [In-State] and Detention Centers		16,852.00		16,852.00
569 Tuition – Other		610.74		610.74
580 Travel	968.29	88.50		1,056.79
Total Other Purchased Services	\$568,701.33	\$815,781.24		\$1,384,482.57
600 Supplies				
610 General Supplies	158,266.52	183,266.01	12,358.47	353,891.00
640 Books and Periodicals	1,464.87	17,057.09	12,491.12	31,013.08
650 Supplies & Fees – Technology Related	248,676.98	124,101.64	161,573.30	534,351.92
Total Supplies	\$408,408.37	\$324,424.74	\$186,422.89	\$919,256.00
700 Property				
752 Capital Equipment – Original and Additional		2,777.60		2,777.60
756 Capitalized Technology Equipment – Original	191,967.00	197,176.76		389,143.76
762 Capitalized Equipment - Replacement	1,815.65	17,066.99		18,882.64
766 Capitalized Technology Equipment – Replacement		30,239.00	8,790.00	39,029.00
Total Property	\$193,782.65	\$247,260.35	\$8,790.00	\$449,833.00
800 Other Objects				
810 Dues and Fees	426.00	1,476.00		1,902.00
Total Other Objects	\$426.00	\$1,476.00		\$1,902.00
Total 1100 Regular Programs – Elementary / Secondary	\$11,179,003.84	\$14,997,722.28	\$566,681.35	\$26,743,407.47

General Fund (10)

1110 Regular Programs

	<u>Elementary</u>	<u>Secondary</u>	<u>Federal</u>	<u>Total</u>
100 Personnel Services – Salaries				
100 Personnel Services – Salaries	6,058,878.29	8,253,076.37	61,095.66	14,373,050.32
Total Personnel Services – Salaries	\$6,058,878.29	\$8,253,076.37	\$61,095.66	\$14,373,050.32
200 Personnel Services – Employee Benefits				
210 Group Insurance – Contracted Provider	9,246.24	12,309.66	109.74	21,665.64
220 Social Security Contributions	445,335.80	606,202.14	4,611.61	1,056,149.55
230 PSERS Retirement Contributions	2,141,853.79	2,880,200.00	10,541.98	5,032,595.77
250 Unemployment Compensation	536.64	1,352.58		1,889.22
260 Workers' Compensation	47,421.43	64,594.93	478.19	112,494.55
270 Group Insurance – Self-Insurance	1,097,452.54	1,533,277.17	8,664.10	2,639,393.81
299 All Other Employee Benefits	24,075.00	22,805.00		46,880.00
Total Personnel Services – Employee Benefits	\$3,765,921.44	\$5,120,741.48	\$24,405.62	\$8,911,068.54
300 Purchased Professional and Technical Services				
329 Professional Educational Services – Other	153,650.81	197,675.15	3,091.60	354,417.56
330 Other Professional Services	0.25	49.75	1,173.66	1,223.66
Total Purchased Professional and Technical Services	\$153,651.06	\$197,724.90	\$4,265.26	\$355,641.22
400 Purchased Property Services				
430 Repairs and Maintenance Services	29,234.70	37,237.20		66,471.90
Total Purchased Property Services	\$29,234.70	\$37,237.20		\$66,471.90
500 Other Purchased Services				
510 Student Transportation Services	371.65	814.90		1,186.55
561 Tuition To Other School Districts Within the State		18,001.80		18,001.80
562 Tuition To Pennsylvania Charter Schools	567,361.39	779,413.30		1,346,774.69
568 Tuition To Private Residential Rehabilitative Institutions (PRRI) [In-State] and Detention Centers		16,852.00		16,852.00
569 Tuition – Other		610.74		610.74
580 Travel	968.29	88.50		1,056.79
Total Other Purchased Services	\$568,701.33	\$815,781.24		\$1,384,482.57
600 Supplies				
610 General Supplies	158,266.52	183,266.01	4,881.57	346,414.10
640 Books and Periodicals	1,464.87	17,057.09	24.42	18,546.38
650 Supplies & Fees – Technology Related	248,676.98	124,101.64	161,573.30	534,351.92
Total Supplies	\$408,408.37	\$324,424.74	\$166,479.29	\$899,312.40
700 Property				
752 Capital Equipment – Original and Additional		2,777.60		2,777.60
756 Capitalized Technology Equipment – Original	191,967.00	197,176.76		389,143.76
762 Capitalized Equipment - Replacement	1,815.65	17,066.99		18,882.64
766 Capitalized Technology Equipment – Replacement		30,239.00	8,790.00	39,029.00
Total Property	\$193,782.65	\$247,260.35	\$8,790.00	\$449,833.00
800 Other Objects				
810 Dues and Fees	426.00	1,476.00		1,902.00
Total Other Objects	\$426.00	\$1,476.00		\$1,902.00
Total 1110 Regular Programs	\$11,179,003.84	\$14,997,722.28	\$265,035.83	\$26,441,761.95

General Fund (10)

	<u>Elementary</u>	<u>Secondary</u>	<u>Federal</u>	<u>Total</u>
1190 Federally-Funded Regular Programs				
100 Personnel Services – Salaries				
100 Personnel Services – Salaries			187,316.92	187,316.92
Total Personnel Services – Salaries			\$187,316.92	\$187,316.92
200 Personnel Services – Employee Benefits				
210 Group Insurance – Contracted Provider			308.76	308.76
220 Social Security Contributions			13,818.85	13,818.85
230 PSERS Retirement Contributions			34,687.32	34,687.32
260 Workers' Compensation			1,466.09	1,466.09
270 Group Insurance – Self-Insurance			44,103.98	44,103.98
Total Personnel Services – Employee Benefits			\$94,385.00	\$94,385.00
600 Supplies				
610 General Supplies			7,476.90	7,476.90
640 Books and Periodicals			12,466.70	12,466.70
Total Supplies			\$19,943.60	\$19,943.60
Total 1190 Federally-Funded Regular Programs			\$301,645.52	\$301,645.52

General Fund (10)

1200 Special Programs – Elementary / Secondary

	<u>Elementary</u>	<u>Secondary</u>	<u>Federal</u>	<u>Total</u>
100 Personnel Services – Salaries				
100 Personnel Services – Salaries	1,122,743.62	1,930,459.02	13,419.39	3,066,622.03
Total Personnel Services – Salaries	\$1,122,743.62	\$1,930,459.02	\$13,419.39	\$3,066,622.03
200 Personnel Services – Employee Benefits				
210 Group Insurance – Contracted Provider	1,395.57	2,726.73		4,122.30
220 Social Security Contributions	82,630.76	144,158.44	513.28	227,302.48
230 PSERS Retirement Contributions	387,662.64	665,412.37	2,315.51	1,055,390.52
250 Unemployment Compensation	1,628.52	6,597.56		8,226.08
260 Workers' Compensation	8,821.97	15,179.78		24,001.75
270 Group Insurance – Self-Insurance	198,442.97	343,038.20		541,481.17
Total Personnel Services – Employee Benefits	\$680,582.43	\$1,177,113.08	\$2,828.79	\$1,860,524.30
300 Purchased Professional and Technical Services				
322 Professional Educational Services – Ius	784,700.76	1,538,620.59	655,432.21	2,978,753.56
323 Professional Educational Services – Other Educational Agencies	23,125.00	12,037.50		35,162.50
329 Professional Educational Services – Other	23,820.85	49,916.86		73,737.71
Total Purchased Professional and Technical Services	\$831,646.61	\$1,600,574.95	\$655,432.21	\$3,087,653.77
500 Other Purchased Services				
561 Tuition To Other School Districts Within the State	2,047.30	407,413.30	3,705.00	413,165.60
562 Tuition To Pennsylvania Charter Schools	153,436.98	415,302.80		568,739.78
563 Tuition To Nonpublic Schools	331,366.90	139,612.10		470,979.00
567 Tuition To Approved Private Schools (APS) and PA Chartered Schools for the Deaf and Blind	54,944.12			54,944.12
568 Tuition To Private Residential Rehabilitative Institutions (PRRI) [In-State] and Detention Centers	32,096.08	73,628.21		105,724.29
569 Tuition – Other	20,995.00	39,355.88		60,350.88
580 Travel	59.29			59.29
594 IU Payment By Withholding for Institutionalized Children's Programs – Special Classes	6.24	1,240.92		1,247.16
Total Other Purchased Services	\$594,951.91	\$1,076,553.21	\$3,705.00	\$1,675,210.12
600 Supplies				
610 General Supplies	17,243.64	14,429.57	1,210.61	32,883.82
640 Books and Periodicals	1,099.29	1,851.80		2,951.09
650 Supplies & Fees – Technology Related	6,421.70	7,023.83	20,901.67	34,347.20
Total Supplies	\$24,764.63	\$23,305.20	\$22,112.28	\$70,182.11
800 Other Objects				
810 Dues and Fees	15.50	3,084.50		3,100.00
890 Miscellaneous Expenditures	75.00	75.00		150.00
Total Other Objects	\$90.50	\$3,159.50		\$3,250.00
Total 1200 Special Programs – Elementary / Secondary	\$3,254,779.70	\$5,811,164.96	\$697,497.67	\$9,763,442.33

General Fund (10)

1240 Academic Support

	<u>Elementary</u>	<u>Secondary</u>	<u>Federal</u>	<u>Total</u>
100 Personnel Services – Salaries				
100 Personnel Services – Salaries	1,122,743.62	1,930,459.02	13,419.39	3,066,622.03
Total Personnel Services – Salaries	\$1,122,743.62	\$1,930,459.02	\$13,419.39	\$3,066,622.03
200 Personnel Services – Employee Benefits				
210 Group Insurance – Contracted Provider	1,395.57	2,726.73		4,122.30
220 Social Security Contributions	82,630.76	144,158.44	513.28	227,302.48
230 PSERS Retirement Contributions	387,662.64	665,412.37	2,315.51	1,055,390.52
250 Unemployment Compensation	1,628.52	6,597.56		8,226.08
260 Workers' Compensation	8,821.97	15,179.78		24,001.75
270 Group Insurance – Self-Insurance	198,442.97	343,038.20		541,481.17
Total Personnel Services – Employee Benefits	\$680,582.43	\$1,177,113.08	\$2,828.79	\$1,860,524.30
300 Purchased Professional and Technical Services				
322 Professional Educational Services – Ius	784,700.76	1,538,620.59	655,432.21	2,978,753.56
323 Professional Educational Services – Other Educational Agencies	23,125.00	12,037.50		35,162.50
329 Professional Educational Services – Other	23,820.85	49,916.86		73,737.71
Total Purchased Professional and Technical Services	\$831,646.61	\$1,600,574.95	\$655,432.21	\$3,087,653.77
500 Other Purchased Services				
561 Tuition To Other School Districts Within the State	2,047.30	407,413.30	3,705.00	413,165.60
562 Tuition To Pennsylvania Charter Schools	153,436.98	415,302.80		568,739.78
580 Travel	59.29			59.29
Total Other Purchased Services	\$155,543.57	\$822,716.10	\$3,705.00	\$981,964.67
600 Supplies				
610 General Supplies	17,243.64	14,429.57	1,210.61	32,883.82
640 Books and Periodicals	1,099.29	1,851.80		2,951.09
650 Supplies & Fees – Technology Related	6,421.70	7,023.83	20,901.67	34,347.20
Total Supplies	\$24,764.63	\$23,305.20	\$22,112.28	\$70,182.11
800 Other Objects				
810 Dues and Fees	15.50	3,084.50		3,100.00
890 Miscellaneous Expenditures	75.00	75.00		150.00
Total Other Objects	\$90.50	\$3,159.50		\$3,250.00
Total 1240 Academic Support	\$2,815,371.36	\$5,557,327.85	\$697,497.67	\$9,070,196.88

General Fund (10)

	<u>Elementary</u>	<u>Secondary</u>	<u>Federal</u>	<u>Total</u>
1241 Learning Support – Public				
100 Personnel Services – Salaries				
100 Personnel Services – Salaries	1,080,745.12	1,930,459.02	13,419.39	3,024,623.53
Total Personnel Services – Salaries	\$1,080,745.12	\$1,930,459.02	\$13,419.39	\$3,024,623.53
200 Personnel Services – Employee Benefits				
210 Group Insurance – Contracted Provider	1,332.57	2,726.73		4,059.30
220 Social Security Contributions	79,421.60	144,158.44	513.28	224,093.32
230 PSERS Retirement Contributions	373,168.95	665,412.37	2,315.51	1,040,896.83
250 Unemployment Compensation	1,628.52	6,597.56		8,226.08
260 Workers' Compensation	8,493.26	15,179.78		23,673.04
270 Group Insurance – Self-Insurance	190,816.44	343,038.20		533,854.64
Total Personnel Services – Employee Benefits	\$654,861.34	\$1,177,113.08	\$2,828.79	\$1,834,803.21
300 Purchased Professional and Technical Services				
322 Professional Educational Services – Ius	784,700.76	1,538,620.59	655,432.21	2,978,753.56
323 Professional Educational Services – Other Educational Agencies	23,125.00	12,037.50		35,162.50
329 Professional Educational Services – Other	23,820.85	49,916.86		73,737.71
Total Purchased Professional and Technical Services	\$831,646.61	\$1,600,574.95	\$655,432.21	\$3,087,653.77
500 Other Purchased Services				
561 Tuition To Other School Districts Within the State	2,047.30	407,413.30	3,705.00	413,165.60
562 Tuition To Pennsylvania Charter Schools	153,436.98	415,302.80		568,739.78
Total Other Purchased Services	\$155,484.28	\$822,716.10	\$3,705.00	\$981,905.38
600 Supplies				
610 General Supplies	17,044.65	14,429.57	1,210.61	32,684.83
640 Books and Periodicals	1,050.62	1,543.55		2,594.17
650 Supplies & Fees – Technology Related	5,886.70	7,023.83	20,901.67	33,812.20
Total Supplies	\$23,981.97	\$22,996.95	\$22,112.28	\$69,091.20
800 Other Objects				
810 Dues and Fees	0.75	149.25		150.00
Total Other Objects	\$0.75	\$149.25		\$150.00
Total 1241 Learning Support – Public	\$2,746,720.07	\$5,554,009.35	\$697,497.67	\$8,998,227.09

General Fund (10)

1243 Gifted Support

	<u>Elementary</u>	<u>Secondary</u>	<u>Federal</u>	<u>Total</u>
100 Personnel Services – Salaries				
100 Personnel Services – Salaries	41,998.50			41,998.50
Total Personnel Services – Salaries	\$41,998.50			\$41,998.50
200 Personnel Services – Employee Benefits				
210 Group Insurance – Contracted Provider	63.00			63.00
220 Social Security Contributions	3,209.16			3,209.16
230 PSERS Retirement Contributions	14,493.69			14,493.69
260 Workers' Compensation	328.71			328.71
270 Group Insurance – Self-Insurance	7,626.53			7,626.53
Total Personnel Services – Employee Benefits	\$25,721.09			\$25,721.09
500 Other Purchased Services				
580 Travel	59.29			59.29
Total Other Purchased Services	\$59.29			\$59.29
600 Supplies				
610 General Supplies	198.99			198.99
640 Books and Periodicals	48.67	308.25		356.92
650 Supplies & Fees – Technology Related	535.00			535.00
Total Supplies	\$782.66	\$308.25		\$1,090.91
800 Other Objects				
810 Dues and Fees	14.75	2,935.25		2,950.00
890 Miscellaneous Expenditures	75.00	75.00		150.00
Total Other Objects	\$89.75	\$3,010.25		\$3,100.00
Total 1243 Gifted Support	\$68,651.29	\$3,318.50		\$71,969.79

General Fund (10)

1290 Special Programs - Other Support

500 Other Purchased Services

	<u>Elementary</u>	<u>Secondary</u>	<u>Federal</u>	<u>Total</u>
563 Tuition To Nonpublic Schools	331,366.90	139,612.10		470,979.00
567 Tuition To Approved Private Schools (APS) and PA Chartered Schools for the Deaf and Blind	54,944.12			54,944.12
568 Tuition To Private Residential Rehabilitative Institutions (PRRI) [In-State] and Detention Centers	32,096.08	73,628.21		105,724.29
569 Tuition – Other	20,995.00	39,355.88		60,350.88
594 IU Payment By Withholding for Institutionalized Children’s Programs – Special Classes	6.24	1,240.92		1,247.16
Total Other Purchased Services	\$439,408.34	\$253,837.11		\$693,245.45
Total 1290 Special Programs - Other Support	\$439,408.34	\$253,837.11		\$693,245.45

General Fund (10)

1300 Vocational Education

400 Purchased Property Services

	<u>Elementary</u>	<u>Secondary</u>	<u>Federal</u>	<u>Total</u>
440 Rentals		61,361.47		61,361.47

Total Purchased Property Services

		\$61,361.47		\$61,361.47
--	--	--------------------	--	--------------------

500 Other Purchased Services

564 Tuition To Career and Technology Centers		1,116,085.63		1,116,085.63
--	--	--------------	--	--------------

Total Other Purchased Services

		\$1,116,085.63		\$1,116,085.63
--	--	-----------------------	--	-----------------------

Total 1300 Vocational Education

		\$1,177,447.10		\$1,177,447.10
--	--	-----------------------	--	-----------------------

General Fund (10)

	<u>Elementary</u>	<u>Secondary</u>	<u>Federal</u>	<u>Total</u>
1400 Other Instructional Programs – Elementary / Secondary				
100 Personnel Services – Salaries				
100 Personnel Services – Salaries			44,740.51	44,740.51
Total Personnel Services – Salaries			\$44,740.51	\$44,740.51
200 Personnel Services – Employee Benefits				
220 Social Security Contributions			3,318.19	3,318.19
230 PSERS Retirement Contributions	5,452.93	3,024.44	6,962.55	15,439.92
260 Workers’ Compensation			350.17	350.17
Total Personnel Services – Employee Benefits	\$5,452.93	\$3,024.44	\$10,630.91	\$19,108.28
300 Purchased Professional and Technical Services				
329 Professional Educational Services – Other	5,611.22	21,787.00		27,398.22
Total Purchased Professional and Technical Services	\$5,611.22	\$21,787.00		\$27,398.22
500 Other Purchased Services				
510 Student Transportation Services	8.96	1,783.04	9,602.74	11,394.74
568 Tuition To Private Residential Rehabilitative Institutions (PRRI) [In-State] and Detention Centers		20,301.91		20,301.91
Total Other Purchased Services	\$8.96	\$22,084.95	\$9,602.74	\$31,696.65
600 Supplies				
610 General Supplies	137.84		3,335.54	3,473.38
Total Supplies	\$137.84		\$3,335.54	\$3,473.38
Total 1400 Other Instructional Programs – Elementary / Secondary	\$11,210.95	\$46,896.39	\$68,309.70	\$126,417.04

General Fund (10)

1420 Summer School

100 Personnel Services – Salaries

100 Personnel Services – Salaries

Total Personnel Services – Salaries

200 Personnel Services – Employee Benefits

220 Social Security Contributions

230 PSERS Retirement Contributions

260 Workers’ Compensation

Total Personnel Services – Employee Benefits

500 Other Purchased Services

510 Student Transportation Services

Total Other Purchased Services

600 Supplies

610 General Supplies

Total Supplies

Total 1420 Summer School

	<u>Elementary</u>	<u>Secondary</u>	<u>Federal</u>	<u>Total</u>
			13,375.51	13,375.51
			\$13,375.51	\$13,375.51
			1,009.35	1,009.35
	2,573.08	492.24	1,550.53	4,615.85
			104.68	104.68
	\$2,573.08	\$492.24	\$2,664.56	\$5,729.88
			1,078.00	2,870.00
	8.96	1,783.04	1,078.00	2,870.00
	\$8.96	\$1,783.04	\$1,078.00	\$2,870.00
			2,566.30	2,704.14
	137.84		2,566.30	2,704.14
	\$137.84		\$2,566.30	\$2,704.14
	\$2,719.88	\$2,275.28	\$19,684.37	\$24,679.53

General Fund (10)

1430 Homebound Instruction

300 Purchased Professional and Technical Services

329 Professional Educational Services – Other

Total Purchased Professional and Technical Services

Total 1430 Homebound Instruction

	<u>Elementary</u>	<u>Secondary</u>	<u>Federal</u>	<u>Total</u>
	5,611.22	21,787.00		27,398.22
	\$5,611.22	\$21,787.00		\$27,398.22
	\$5,611.22	\$21,787.00		\$27,398.22

General Fund (10)

1440 Alternative Regular Education Programs

Elementary

Secondary

Federal

Total

500 Other Purchased Services

568 Tuition To Private Residential Rehabilitative Institutions (PRRI) [In-State] and Detention Centers

20,301.91

20,301.91

Total Other Purchased Services

\$20,301.91

\$20,301.91

Total 1440 Alternative Regular Education Programs

\$20,301.91

\$20,301.91

LEA : 113361303 Cocalico SD

Printed 11/9/2021 11:21:01 AM

General Fund (10)

1441 Adjudicated / Court-Placed Programs

Elementary

Secondary

Federal

Total

500 Other Purchased Services

568 Tuition To Private Residential Rehabilitative Institutions (PRRI) [In-State] and Detention Centers

3,067.99

3,067.99

Total Other Purchased Services

\$3,067.99

\$3,067.99

Total 1441 Adjudicated / Court-Placed Programs

\$3,067.99

\$3,067.99

LEA : 113361303 Cocalico SD

Printed 11/9/2021 11:21:01 AM

General Fund (10)

1442 Alternative Education Programs

Elementary

Secondary

Federal

Total

500 Other Purchased Services

568 Tuition To Private Residential Rehabilitative Institutions (PRRI) [In-State] and Detention Centers

17,233.92

17,233.92

Total Other Purchased Services

\$17,233.92

\$17,233.92

Total 1442 Alternative Education Programs

\$17,233.92

\$17,233.92

General Fund (10)

	<u>Elementary</u>	<u>Secondary</u>	<u>Federal</u>	<u>Total</u>
1450 Instructional Programs Outside the Established School Day				
100 Personnel Services – Salaries				
100 Personnel Services – Salaries			31,365.00	31,365.00
Total Personnel Services – Salaries			\$31,365.00	\$31,365.00
200 Personnel Services – Employee Benefits				
220 Social Security Contributions			2,308.84	2,308.84
230 PSERS Retirement Contributions	2,879.85	2,532.20	5,412.02	10,824.07
260 Workers’ Compensation			245.49	245.49
Total Personnel Services – Employee Benefits	\$2,879.85	\$2,532.20	\$7,966.35	\$13,378.40
500 Other Purchased Services				
510 Student Transportation Services			8,524.74	8,524.74
Total Other Purchased Services			\$8,524.74	\$8,524.74
600 Supplies				
610 General Supplies			769.24	769.24
Total Supplies			\$769.24	\$769.24
Total 1450 Instructional Programs Outside the Established School Day	\$2,879.85	\$2,532.20	\$48,625.33	\$54,037.38

General Fund (10)

1500 Nonpublic School Programs

Elementary

Secondary

Federal

Total

300 Purchased Professional and Technical Services

322 Professional Educational Services – Ius

2,417.00

2,417.00

Total Purchased Professional and Technical Services

\$2,417.00

\$2,417.00

600 Supplies

610 General Supplies

8,776.06

8,776.06

Total Supplies

\$8,776.06

\$8,776.06

Total 1500 Nonpublic School Programs

\$11,193.06

\$11,193.06

General Fund (10)

2000 Support Services

Total

100 Personnel Services – Salaries

100 Personnel Services – Salaries 7,051,487.40

Total Personnel Services – Salaries

\$7,051,487.40

200 Personnel Services – Employee Benefits

210 Group Insurance – Contracted Provider 12,931.80

220 Social Security Contributions 516,066.46

230 PSERS Retirement Contributions 2,414,098.16

240 Tuition Reimbursement 300,495.59

250 Unemployment Compensation 2,891.07

260 Workers' Compensation 54,471.76

270 Group Insurance – Self-Insurance 1,725,223.38

299 All Other Employee Benefits 266,356.86

Total Personnel Services – Employee Benefits

\$5,292,535.08

300 Purchased Professional and Technical Services

310 Official / Administrative Services 50,823.56

322 Professional Educational Services – Ius 26,991.00

323 Professional Educational Services – Other Educational Agencies 3,699.00

329 Professional Educational Services – Other 99,791.02

330 Other Professional Services 158,516.96

340 Technical Services 103,927.36

350 Security / Safety Services 82,510.90

360 Employee Training and Development Services 32,096.55

390 Other Purchased Professional and Technical Services 17,228.92

Total Purchased Professional and Technical Services

\$575,585.27

400 Purchased Property Services

410 Cleaning Services 43,890.00

420 Utility Services 48,667.58

430 Repairs and Maintenance Services 236,877.61

440 Rentals 956.87

Total Purchased Property Services

\$330,392.06

500 Other Purchased Services

513 Contracted Carriers 2,295,265.40

519 Student Transportation Services From Other Sources 10,199.32

520 Insurance – General 174.00

521 Fire Insurance 75,198.79

522 Automotive Liability Insurance 9,027.77

523 General Property and Liability Insurance 10,858.00

529 Other Insurance 6,466.71

530 Communications 151,570.53

549 Other Advertising/Public Relations 8,964.10

550 Printing and Binding 32,769.21

580 Travel 11,866.71

595 IU Payments By Withholding 24,030.60

Total Other Purchased Services

\$2,636,391.14

LEA : 113361303 Cocalico SD

Printed 11/9/2021 11:21:11 AM

General Fund (10)

2000 Support Services

Total

600 Supplies

610 General Supplies	478,593.20
620 Energy	511,410.66
630 Food	13,129.88
640 Books and Periodicals	43,500.23
650 Supplies & Fees – Technology Related	298,734.61

Total Supplies	\$1,345,368.58
-----------------------	-----------------------

700 Property

752 Capital Equipment – Original and Additional	59,726.00
766 Capitalized Technology Equipment– Replacement	14,312.96

Total Property	\$74,038.96
-----------------------	--------------------

800 Other Objects

810 Dues and Fees	31,655.10
890 Miscellaneous Expenditures	27,984.75

Total Other Objects	\$59,639.85
----------------------------	--------------------

Total 2000 Support Services	\$17,365,438.34
------------------------------------	------------------------

General Fund (10)

	<u>Elementary</u>	<u>Secondary</u>	<u>Federal</u>	<u>Total</u>
2100 Support Services – Students				
100 Personnel Services – Salaries				
100 Personnel Services – Salaries	444,633.96	612,705.45	113,587.08	1,302,901.41
Total Personnel Services – Salaries	\$444,633.96	\$612,705.45	\$113,587.08	\$1,302,901.41
200 Personnel Services – Employee Benefits				
210 Group Insurance – Contracted Provider	696.00	892.60	179.60	1,965.60
220 Social Security Contributions	32,864.29	44,506.70	8,537.56	95,331.18
230 PSERS Retirement Contributions	152,745.94	213,841.91	24,870.62	448,492.01
260 Workers' Compensation	3,476.45	4,080.48	889.01	9,478.88
270 Group Insurance – Self-Insurance	84,017.57	111,197.68	22,087.38	260,165.63
Total Personnel Services – Employee Benefits	\$273,800.25	\$374,519.37	\$56,564.17	\$815,433.30
300 Purchased Professional and Technical Services				
330 Other Professional Services	3.60	716.40	57,579.00	58,299.00
Total Purchased Professional and Technical Services	\$3.60	\$716.40	\$57,579.00	\$58,299.00
400 Purchased Property Services				
430 Repairs and Maintenance Services	7.77	3,545.45		3,553.22
Total Purchased Property Services	\$7.77	\$3,545.45		\$3,553.22
500 Other Purchased Services				
580 Travel	197.04	142.62		1,528.85
Total Other Purchased Services	\$197.04	\$142.62		\$1,528.85
600 Supplies				
610 General Supplies	2,975.37	10,050.66		13,047.01
630 Food		20.00		20.00
640 Books and Periodicals	404.53	223.88		628.41
650 Supplies & Fees – Technology Related			6,843.00	6,843.00
Total Supplies	\$3,379.90	\$10,294.54	\$6,843.00	\$20,538.42
800 Other Objects				
810 Dues and Fees	393.97	2,441.03		2,915.00
Total Other Objects	\$393.97	\$2,441.03		\$2,915.00
Total 2100 Support Services – Students	\$722,416.49	\$1,004,364.86	\$234,573.25	\$2,205,169.20

General Fund (10)

	<u>Elementary</u>	<u>Secondary</u>	<u>Federal</u>	<u>Total</u>
2120 Guidance Services				
100 Personnel Services – Salaries				
100 Personnel Services – Salaries	231,792.08	539,546.28		771,338.36
Total Personnel Services – Salaries	\$231,792.08	\$539,546.28		\$771,338.36
200 Personnel Services – Employee Benefits				
210 Group Insurance – Contracted Provider	378.63	755.37		1,134.00
220 Social Security Contributions	17,199.57	39,145.83		56,345.40
230 PSERS Retirement Contributions	79,280.27	185,803.56		265,083.83
260 Workers' Compensation	1,810.59	3,507.88		5,318.47
270 Group Insurance – Self-Insurance	45,835.23	91,441.68		137,276.91
Total Personnel Services – Employee Benefits	\$144,504.29	\$320,654.32		\$465,158.61
300 Purchased Professional and Technical Services				
330 Other Professional Services			57,579.00	57,579.00
Total Purchased Professional and Technical Services			\$57,579.00	\$57,579.00
400 Purchased Property Services				
430 Repairs and Maintenance Services		1,998.98		1,998.98
Total Purchased Property Services		\$1,998.98		\$1,998.98
500 Other Purchased Services				
580 Travel	0.07	14.42		14.49
Total Other Purchased Services	\$0.07	\$14.42		\$14.49
600 Supplies				
610 General Supplies	2,661.09	2,134.46		4,795.55
630 Food		20.00		20.00
640 Books and Periodicals	403.41			403.41
650 Supplies & Fees – Technology Related			6,843.00	6,843.00
Total Supplies	\$3,064.50	\$2,154.46	\$6,843.00	\$12,061.96
800 Other Objects				
810 Dues and Fees	388.00	1,253.00		1,641.00
Total Other Objects	\$388.00	\$1,253.00		\$1,641.00
Total 2120 Guidance Services	\$379,748.94	\$865,621.46	\$64,422.00	\$1,309,792.40

General Fund (10)

2140 Psychological Services

	<u>Elementary</u>	<u>Secondary</u>	<u>Federal</u>	<u>Total</u>
100 Personnel Services – Salaries				
100 Personnel Services – Salaries	212,841.88	73,159.17	47,003.41	333,004.46
Total Personnel Services – Salaries	\$212,841.88	\$73,159.17	\$47,003.41	\$333,004.46
200 Personnel Services – Employee Benefits				
210 Group Insurance – Contracted Provider	317.37	137.23	74.60	529.20
220 Social Security Contributions	15,664.72	5,360.87	3,532.83	24,558.42
230 PSERS Retirement Contributions	73,465.67	28,038.35	13,381.59	114,885.61
260 Workers' Compensation	1,665.86	572.60	367.88	2,606.34
270 Group Insurance – Self-Insurance	38,182.34	19,756.00	9,170.76	67,109.10
Total Personnel Services – Employee Benefits	\$129,295.96	\$53,865.05	\$26,527.66	\$209,688.67
300 Purchased Professional and Technical Services				
330 Other Professional Services	3.60	716.40		720.00
Total Purchased Professional and Technical Services	\$3.60	\$716.40		\$720.00
400 Purchased Property Services				
430 Repairs and Maintenance Services	7.77	1,546.47		1,554.24
Total Purchased Property Services	\$7.77	\$1,546.47		\$1,554.24
500 Other Purchased Services				
580 Travel	196.97	128.20		325.17
Total Other Purchased Services	\$196.97	\$128.20		\$325.17
600 Supplies				
610 General Supplies	314.28	7,916.20		8,230.48
640 Books and Periodicals	1.12	223.88		225.00
Total Supplies	\$315.40	\$8,140.08		\$8,455.48
800 Other Objects				
810 Dues and Fees	5.97	1,188.03		1,194.00
Total Other Objects	\$5.97	\$1,188.03		\$1,194.00
Total 2140 Psychological Services	\$342,667.55	\$138,743.40	\$73,531.07	\$554,942.02

General Fund (10)

2160 Social Work Services

100 Personnel Services – Salaries

100 Personnel Services – Salaries

Total Personnel Services – Salaries

200 Personnel Services – Employee Benefits

210 Group Insurance – Contracted Provider

220 Social Security Contributions

230 PSERS Retirement Contributions

260 Workers' Compensation

270 Group Insurance – Self-Insurance

Total Personnel Services – Employee Benefits

500 Other Purchased Services

580 Travel

Total Other Purchased Services

600 Supplies

610 General Supplies

Total Supplies

Total 2160 Social Work Services

Elementary

Secondary

Federal

Total

66,583.67 146,870.67

\$66,583.67 \$146,870.67

105.00 252.00

5,004.73 10,817.55

11,489.03 50,685.10

521.13 1,149.52

12,916.62 40,526.63

\$30,036.51 \$103,430.80

1,189.19

\$1,189.19

20.98

\$20.98

\$96,620.18 \$251,511.64

General Fund (10)

2170 Student Accounting Services

Elementary

Secondary

Federal

Total

100 Personnel Services – Salaries

100 Personnel Services – Salaries

51,687.92

Total Personnel Services – Salaries

\$51,687.92

200 Personnel Services – Employee Benefits

210 Group Insurance – Contracted Provider

50.40

220 Social Security Contributions

3,609.81

230 PSERS Retirement Contributions

17,837.47

260 Workers' Compensation

404.55

270 Group Insurance – Self-Insurance

15,252.99

Total Personnel Services – Employee Benefits

\$37,155.22

800 Other Objects

810 Dues and Fees

80.00

Total Other Objects

\$80.00

Total 2170 Student Accounting Services

\$88,923.14

General Fund (10)

2200 Support Services – Instructional Staff

	<u>Elementary</u>	<u>Secondary</u>	<u>Federal</u>	<u>Total</u>
100 Personnel Services – Salaries				
100 Personnel Services – Salaries	379,422.79	818,689.74	2,620.00	1,200,732.53
Total Personnel Services – Salaries	\$379,422.79	\$818,689.74	\$2,620.00	\$1,200,732.53
200 Personnel Services – Employee Benefits				
210 Group Insurance – Contracted Provider	462.03	1,192.77		1,654.80
220 Social Security Contributions	27,335.79	60,918.60	196.11	88,450.50
230 PSERS Retirement Contributions	130,872.61	282,314.14	469.16	413,655.91
240 Tuition Reimbursement	71,470.99	170,909.90	2,040.00	244,420.89
260 Workers' Compensation	2,969.66	6,407.71	20.51	9,397.88
270 Group Insurance – Self-Insurance	76,646.26	136,895.67		213,541.93
299 All Other Employee Benefits	65,085.85	75,725.12		140,810.97
Total Personnel Services – Employee Benefits	\$374,843.19	\$734,363.91	\$2,725.78	\$1,111,932.88
300 Purchased Professional and Technical Services				
322 Professional Educational Services – Ius	0.75	149.25		150.00
323 Professional Educational Services – Other Educational Agencies	18.50	3,680.50		3,699.00
329 Professional Educational Services – Other	24,994.82	68,093.49	339.38	93,427.69
360 Employee Training and Development Services	5,795.51	14,161.54	3,155.00	23,112.05
Total Purchased Professional and Technical Services	\$30,809.58	\$86,084.78	\$3,494.38	\$120,388.74
400 Purchased Property Services				
430 Repairs and Maintenance Services	7,268.15	6,440.36		13,708.51
440 Rentals	1.45	288.55		290.00
Total Purchased Property Services	\$7,269.60	\$6,728.91		\$13,998.51
500 Other Purchased Services				
550 Printing and Binding	2.38	472.62		475.00
580 Travel	3.05	606.74		609.79
Total Other Purchased Services	\$5.43	\$1,079.36		\$1,084.79
600 Supplies				
610 General Supplies	2,987.80	9,795.93		12,783.73
630 Food	4.19	834.77		838.96
640 Books and Periodicals	13,494.16	18,315.89	9,002.56	40,812.61
650 Supplies & Fees – Technology Related	11,025.73	39,682.41	33,680.00	84,388.14
Total Supplies	\$27,511.88	\$68,629.00	\$42,682.56	\$138,823.44
800 Other Objects				
810 Dues and Fees	182.18	1,502.82		1,685.00
Total Other Objects	\$182.18	\$1,502.82		\$1,685.00
Total 2200 Support Services – Instructional Staff	\$820,044.65	\$1,717,078.52	\$51,522.72	\$2,588,645.89

General Fund (10)

2240 Computer-Assisted Instruction Support Services

	<u>Elementary</u>	<u>Secondary</u>	<u>Federal</u>	<u>Total</u>
100 Personnel Services – Salaries				
100 Personnel Services – Salaries	492.15	97,937.25		98,429.40
Total Personnel Services – Salaries	\$492.15	\$97,937.25		\$98,429.40
200 Personnel Services – Employee Benefits				
210 Group Insurance – Contracted Provider	0.63	125.37		126.00
220 Social Security Contributions	36.01	7,165.90		7,201.91
230 PSERS Retirement Contributions	169.84	33,798.18		33,968.02
260 Workers' Compensation	3.85	766.53		770.38
270 Group Insurance – Self-Insurance	76.26	15,176.73		15,252.99
Total Personnel Services – Employee Benefits	\$286.59	\$57,032.71		\$57,319.30
600 Supplies				
610 General Supplies	2.50	497.25		499.75
Total Supplies	\$2.50	\$497.25		\$499.75
Total 2240 Computer-Assisted Instruction Support Services	\$781.24	\$155,467.21		\$156,248.45

General Fund (10)

2250 School Library Services

	<u>Elementary</u>	<u>Secondary</u>	<u>Federal</u>	<u>Total</u>
100 Personnel Services – Salaries				
100 Personnel Services – Salaries	280,797.89	189,685.24		470,483.13
Total Personnel Services – Salaries	\$280,797.89	\$189,685.24		\$470,483.13
200 Personnel Services – Employee Benefits				
210 Group Insurance – Contracted Provider	457.80	352.80		810.60
220 Social Security Contributions	20,065.02	13,620.87		33,685.89
230 PSERS Retirement Contributions	96,828.73	65,340.30		162,169.03
260 Workers' Compensation	2,197.75	1,484.63		3,682.38
270 Group Insurance – Self-Insurance	76,264.95	61,011.96		137,276.91
Total Personnel Services – Employee Benefits	\$195,814.25	\$141,810.56		\$337,624.81
300 Purchased Professional and Technical Services				
329 Professional Educational Services – Other	8,957.62	2,121.11		11,078.73
Total Purchased Professional and Technical Services	\$8,957.62	\$2,121.11		\$11,078.73
400 Purchased Property Services				
430 Repairs and Maintenance Services	7,260.38	4,893.89		12,154.27
Total Purchased Property Services	\$7,260.38	\$4,893.89		\$12,154.27
600 Supplies				
610 General Supplies	2,033.14	5,458.10		7,491.24
640 Books and Periodicals	13,489.24	17,336.21		30,825.45
650 Supplies & Fees – Technology Related	10,974.33	29,453.78	33,680.00	74,108.11
Total Supplies	\$26,496.71	\$52,248.09	\$33,680.00	\$112,424.80
800 Other Objects				
810 Dues and Fees	180.00	120.00		300.00
Total Other Objects	\$180.00	\$120.00		\$300.00
Total 2250 School Library Services	\$519,506.85	\$390,878.89	\$33,680.00	\$944,065.74

General Fund (10)

	<u>Elementary</u>	<u>Secondary</u>	<u>Federal</u>	<u>Total</u>
2260 Instruction and Curriculum Development Services				
100 Personnel Services – Salaries				
100 Personnel Services – Salaries	51,874.47	371,248.43		423,122.90
Total Personnel Services – Salaries	\$51,874.47	\$371,248.43		\$423,122.90
200 Personnel Services – Employee Benefits				
210 Group Insurance – Contracted Provider	2.97	589.23		592.20
220 Social Security Contributions	3,819.22	28,164.86		31,984.08
230 PSERS Retirement Contributions	17,901.74	128,101.35		146,003.09
260 Workers' Compensation	406.00	2,905.68		3,311.68
270 Group Insurance – Self-Insurance	228.79	45,530.25		45,759.04
299 All Other Employee Benefits	65,065.18	71,612.26		136,677.44
Total Personnel Services – Employee Benefits	\$87,423.90	\$276,903.63		\$364,327.53
300 Purchased Professional and Technical Services				
329 Professional Educational Services – Other	33.94	7,771.75		7,805.69
Total Purchased Professional and Technical Services	\$33.94	\$7,771.75		\$7,805.69
400 Purchased Property Services				
430 Repairs and Maintenance Services	7.77	1,546.47		1,554.24
Total Purchased Property Services	\$7.77	\$1,546.47		\$1,554.24
500 Other Purchased Services				
550 Printing and Binding	2.38	472.62		475.00
580 Travel	2.17	432.12		434.29
Total Other Purchased Services	\$4.55	\$904.74		\$909.29
600 Supplies				
610 General Supplies	5.67	1,129.32		1,134.99
Total Supplies	\$5.67	\$1,129.32		\$1,134.99
800 Other Objects				
810 Dues and Fees	2.18	432.82		435.00
Total Other Objects	\$2.18	\$432.82		\$435.00
Total 2260 Instruction and Curriculum Development Services	\$139,352.48	\$659,937.16		\$799,289.64

General Fund (10)

	<u>Elementary</u>	<u>Secondary</u>	<u>Federal</u>	<u>Total</u>
2270 Instructional Staff Professional Development Services				
100 Personnel Services – Salaries				
100 Personnel Services – Salaries	45,747.00	58,073.10	2,620.00	106,440.10
Total Personnel Services – Salaries	\$45,747.00	\$58,073.10	\$2,620.00	\$106,440.10
200 Personnel Services – Employee Benefits				
220 Social Security Contributions	3,377.01	4,299.38	196.11	7,872.50
230 PSERS Retirement Contributions	15,795.86	19,961.81	469.16	36,226.83
240 Tuition Reimbursement	71,470.99	170,909.90	2,040.00	244,420.89
260 Workers' Compensation	358.06	454.53	20.51	833.10
Total Personnel Services – Employee Benefits	\$91,001.92	\$195,625.62	\$2,725.78	\$289,353.32
300 Purchased Professional and Technical Services				
322 Professional Educational Services – Ius	0.75	149.25		150.00
323 Professional Educational Services – Other Educational Agencies	18.50	3,680.50		3,699.00
329 Professional Educational Services – Other	16,003.26	58,200.63	339.38	74,543.27
360 Employee Training and Development Services	5,795.51	14,161.54	3,155.00	23,112.05
Total Purchased Professional and Technical Services	\$21,818.02	\$76,191.92	\$3,494.38	\$101,504.32
400 Purchased Property Services				
440 Rentals	1.45	288.55		290.00
Total Purchased Property Services	\$1.45	\$288.55		\$290.00
500 Other Purchased Services				
580 Travel	0.88	174.62		175.50
Total Other Purchased Services	\$0.88	\$174.62		\$175.50
600 Supplies				
610 General Supplies	946.49	2,711.26		3,657.75
630 Food	4.19	834.77		838.96
640 Books and Periodicals	4.92	979.68	9,002.56	9,987.16
650 Supplies & Fees – Technology Related	51.40	10,228.63		10,280.03
Total Supplies	\$1,007.00	\$14,754.34	\$9,002.56	\$24,763.90
800 Other Objects				
810 Dues and Fees		950.00		950.00
Total Other Objects		\$950.00		\$950.00
Total 2270 Instructional Staff Professional Development Services	\$159,576.27	\$346,058.15	\$17,842.72	\$523,477.14

General Fund (10)

	<u>Elementary</u>	<u>Secondary</u>	<u>Federal</u>	<u>Total</u>
2290 Other Instructional Staff Services				
100 Personnel Services – Salaries				
100 Personnel Services – Salaries	511.28	101,745.72		102,257.00
Total Personnel Services – Salaries	\$511.28	\$101,745.72		\$102,257.00
200 Personnel Services – Employee Benefits				
210 Group Insurance – Contracted Provider	0.63	125.37		126.00
220 Social Security Contributions	38.53	7,667.59		7,706.12
230 PSERS Retirement Contributions	176.44	35,112.50		35,288.94
260 Workers' Compensation	4.00	796.34		800.34
270 Group Insurance – Self-Insurance	76.26	15,176.73		15,252.99
299 All Other Employee Benefits	20.67	4,112.86		4,133.53
Total Personnel Services – Employee Benefits	\$316.53	\$62,991.39		\$63,307.92
Total 2290 Other Instructional Staff Services	\$827.81	\$164,737.11		\$165,564.92

General Fund (10)

2300 Support Services – Administration

	<u>Elementary</u>	<u>Secondary</u>	<u>Federal</u>	<u>Total</u>
100 Personnel Services – Salaries				
100 Personnel Services – Salaries	527,739.10	868,426.15		2,006,836.87
Total Personnel Services – Salaries	\$527,739.10	\$868,426.15		\$2,006,836.87
200 Personnel Services – Employee Benefits				
210 Group Insurance – Contracted Provider	1,457.40	2,394.00		5,262.60
220 Social Security Contributions	39,318.36	63,767.69		147,338.01
230 PSERS Retirement Contributions	181,770.56	298,029.83		689,890.76
250 Unemployment Compensation	218.40			218.40
260 Workers' Compensation	4,130.49	6,796.97		15,707.04
270 Group Insurance – Self-Insurance	137,276.91	228,794.84		472,842.67
299 All Other Employee Benefits	6,518.67	38,068.41		95,259.89
Total Personnel Services – Employee Benefits	\$370,690.79	\$637,851.74		\$1,426,519.37
300 Purchased Professional and Technical Services				
310 Official / Administrative Services				50,823.56
330 Other Professional Services				80,937.96
390 Other Purchased Professional and Technical Services				2,979.41
Total Purchased Professional and Technical Services				\$134,740.93
400 Purchased Property Services				
430 Repairs and Maintenance Services				4,184.00
Total Purchased Property Services				\$4,184.00
500 Other Purchased Services				
520 Insurance – General				174.00
549 Other Advertising/Public Relations				3,402.68
550 Printing and Binding	1,245.00	3,840.00		5,085.00
580 Travel				850.59
Total Other Purchased Services	\$1,245.00	\$3,840.00		\$9,512.27
600 Supplies				
610 General Supplies	6,481.73	8,518.39		78,571.00
630 Food	951.10	2,197.14		11,544.18
640 Books and Periodicals	676.86			2,059.21
650 Supplies & Fees – Technology Related				3,598.99
Total Supplies	\$8,109.69	\$10,715.53		\$95,773.38
700 Property				
766 Capitalized Technology Equipment– Replacement				899.00
Total Property				\$899.00
800 Other Objects				
810 Dues and Fees	2,606.00	4,664.97		24,831.43
Total Other Objects	\$2,606.00	\$4,664.97		\$24,831.43
Total 2300 Support Services – Administration	\$910,390.58	\$1,525,498.39		\$3,703,297.25

General Fund (10)

2310 Board Services

Elementary

Secondary

Federal

Total

300 Purchased Professional and Technical Services

330 Other Professional Services

42,500.00

Total Purchased Professional and Technical Services

\$42,500.00

500 Other Purchased Services

549 Other Advertising/Public Relations

2,402.68

Total Other Purchased Services

\$2,402.68

600 Supplies

610 General Supplies

275.93

630 Food

3,053.81

650 Supplies & Fees – Technology Related

3,400.00

Total Supplies

\$6,729.74

800 Other Objects

810 Dues and Fees

14,136.13

Total Other Objects

\$14,136.13

Total 2310 Board Services

\$65,768.55

LEA : 113361303 Cocalico SD

Printed 11/9/2021 11:21:11 AM

General Fund (10)

2320 Board Treasurer Services

Elementary

Secondary

Federal

Total

500 Other Purchased Services

520 Insurance – General

174.00

Total Other Purchased Services

\$174.00

Total 2320 Board Treasurer Services

\$174.00

General Fund (10)

	<u>Elementary</u>	<u>Secondary</u>	<u>Federal</u>	<u>Total</u>
2330 Tax Assessment and Collection Services				
100 Personnel Services – Salaries				
100 Personnel Services – Salaries				42,657.84
Total Personnel Services – Salaries				\$42,657.84
200 Personnel Services – Employee Benefits				
210 Group Insurance – Contracted Provider				50.40
220 Social Security Contributions				3,035.61
230 PSERS Retirement Contributions				14,721.29
260 Workers' Compensation				333.87
270 Group Insurance – Self-Insurance				15,252.99
Total Personnel Services – Employee Benefits				\$33,394.16
300 Purchased Professional and Technical Services				
310 Official / Administrative Services				50,823.56
Total Purchased Professional and Technical Services				\$50,823.56
600 Supplies				
610 General Supplies				3,735.55
Total Supplies				\$3,735.55
Total 2330 Tax Assessment and Collection Services				\$130,611.11

General Fund (10)

2350 Legal and Accounting Services

Elementary

Secondary

Federal

Total

300 Purchased Professional and Technical Services

330 Other Professional Services

38,437.96

Total Purchased Professional and Technical Services

\$38,437.96

Total 2350 Legal and Accounting Services

\$38,437.96

General Fund (10)

2360 Office of the Superintendent / Executive Director Services

Elementary

Secondary

Federal

Total

100 Personnel Services – Salaries

100 Personnel Services – Salaries

568,013.78

Total Personnel Services – Salaries

\$568,013.78

200 Personnel Services – Employee Benefits

210 Group Insurance – Contracted Provider

1,360.80

220 Social Security Contributions

41,216.35

230 PSERS Retirement Contributions

195,369.08

260 Workers' Compensation

4,445.71

270 Group Insurance – Self-Insurance

91,517.93

299 All Other Employee Benefits

50,672.81

Total Personnel Services – Employee Benefits

\$384,582.68

300 Purchased Professional and Technical Services

390 Other Purchased Professional and Technical Services

2,979.41

Total Purchased Professional and Technical Services

\$2,979.41

400 Purchased Property Services

430 Repairs and Maintenance Services

4,184.00

Total Purchased Property Services

\$4,184.00

500 Other Purchased Services

549 Other Advertising/Public Relations

1,000.00

580 Travel

850.59

Total Other Purchased Services

\$1,850.59

600 Supplies

610 General Supplies

41,472.95

630 Food

5,342.13

640 Books and Periodicals

1,382.35

650 Supplies & Fees – Technology Related

198.99

Total Supplies

\$48,396.42

700 Property

766 Capitalized Technology Equipment – Replacement

899.00

Total Property

\$899.00

800 Other Objects

810 Dues and Fees

3,424.33

Total Other Objects

\$3,424.33

Total 2360 Office of the Superintendent / Executive Director Services

\$1,014,330.21

General Fund (10)

	<u>Elementary</u>	<u>Secondary</u>	<u>Federal</u>	<u>Total</u>
2380 Office of the Principal Services				
100 Personnel Services – Salaries				
100 Personnel Services – Salaries	527,739.10	868,426.15		1,396,165.25
Total Personnel Services – Salaries	\$527,739.10	\$868,426.15		\$1,396,165.25
200 Personnel Services – Employee Benefits				
210 Group Insurance – Contracted Provider	1,457.40	2,394.00		3,851.40
220 Social Security Contributions	39,318.36	63,767.69		103,086.05
230 PSERS Retirement Contributions	181,770.56	298,029.83		479,800.39
250 Unemployment Compensation	218.40			218.40
260 Workers' Compensation	4,130.49	6,796.97		10,927.46
270 Group Insurance – Self-Insurance	137,276.91	228,794.84		366,071.75
299 All Other Employee Benefits	6,518.67	38,068.41		44,587.08
Total Personnel Services – Employee Benefits	\$370,690.79	\$637,851.74		\$1,008,542.53
500 Other Purchased Services				
550 Printing and Binding	1,245.00	3,840.00		5,085.00
Total Other Purchased Services	\$1,245.00	\$3,840.00		\$5,085.00
600 Supplies				
610 General Supplies	6,481.73	8,518.39		15,000.12
630 Food	951.10	2,197.14		3,148.24
640 Books and Periodicals	676.86			676.86
Total Supplies	\$8,109.69	\$10,715.53		\$18,825.22
800 Other Objects				
810 Dues and Fees	2,606.00	4,664.97		7,270.97
Total Other Objects	\$2,606.00	\$4,664.97		\$7,270.97
Total 2380 Office of the Principal Services	\$910,390.58	\$1,525,498.39		\$2,435,888.97

General Fund (10)

2390 Other Administration Services

Elementary

Secondary

Federal

Total

600 Supplies

610 General Supplies

18,086.45

Total Supplies				\$18,086.45
Total 2390 Other Administration Services				\$18,086.45

General Fund (10)

2400 Support Services – Pupil Health

Elementary Secondary Federal Total

100	<u>Personnel Services – Salaries</u>				
	100 Personnel Services – Salaries				344,219.48
Total Personnel Services – Salaries					\$344,219.48
200	<u>Personnel Services – Employee Benefits</u>				
	210 Group Insurance – Contracted Provider				575.40
	220 Social Security Contributions				24,577.71
	230 PSERS Retirement Contributions				118,176.55
	250 Unemployment Compensation				2,215.00
	260 Workers' Compensation				2,694.13
	270 Group Insurance – Self-Insurance				106,770.92
Total Personnel Services – Employee Benefits					\$255,009.71
300	<u>Purchased Professional and Technical Services</u>				
	329 Professional Educational Services – Other				6,363.33
	330 Other Professional Services				474.00
	390 Other Purchased Professional and Technical Services				450.00
Total Purchased Professional and Technical Services					\$7,287.33
400	<u>Purchased Property Services</u>				
	430 Repairs and Maintenance Services				1,981.50
Total Purchased Property Services					\$1,981.50
500	<u>Other Purchased Services</u>				
	580 Travel				52.92
Total Other Purchased Services					\$52.92
600	<u>Supplies</u>				
	610 General Supplies				5,978.44
Total Supplies					\$5,978.44
700	<u>Property</u>				
	752 Capital Equipment – Original and Additional				7,980.00
Total Property					\$7,980.00
800	<u>Other Objects</u>				
	810 Dues and Fees				130.00
Total Other Objects					\$130.00
Total 2400 Support Services – Pupil Health					\$622,639.38

General Fund (10)

2420 Medical Services

Elementary

Secondary

Federal

Total

300 Purchased Professional and Technical Services

330 Other Professional Services

474.00

390 Other Purchased Professional and Technical Services

450.00

Total Purchased Professional and Technical Services

\$924.00

600 Supplies

610 General Supplies

4,369.05

Total Supplies

\$4,369.05

Total 2420 Medical Services

\$5,293.05

LEA : 113361303 Cocalico SD

Printed 11/9/2021 11:21:11 AM

General Fund (10)

2430 Dental Services

Elementary

Secondary

Federal

Total

600 Supplies

610 General Supplies

81.99

Total Supplies **\$81.99**

Total 2430 Dental Services **\$81.99**

General Fund (10)

2500 Support Services – Business

Elementary Secondary Federal Total

100 Personnel Services – Salaries

100 Personnel Services – Salaries 361,980.35

Total Personnel Services – Salaries \$361,980.35

200 Personnel Services – Employee Benefits

210 Group Insurance – Contracted Provider 655.20

220 Social Security Contributions 26,839.79

230 PSERS Retirement Contributions 124,830.57

260 Workers' Compensation 2,833.14

270 Group Insurance – Self-Insurance 76,264.95

299 All Other Employee Benefits 9,637.89

Total Personnel Services – Employee Benefits \$241,061.54

300 Purchased Professional and Technical Services

340 Technical Services 28,985.10

Total Purchased Professional and Technical Services \$28,985.10

400 Purchased Property Services

430 Repairs and Maintenance Services 15,411.58

Total Purchased Property Services \$15,411.58

500 Other Purchased Services

530 Communications 35,512.53

580 Travel 554.07

Total Other Purchased Services \$36,066.60

600 Supplies

610 General Supplies 4,605.66

630 Food 57.41

650 Supplies & Fees – Technology Related 3,236.17

Total Supplies \$7,899.24

700 Property

766 Capitalized Technology Equipment – Replacement 4,767.72

Total Property \$4,767.72

800 Other Objects

810 Dues and Fees 740.33

890 Miscellaneous Expenditures 24,688.07

Total Other Objects \$25,428.40

Total 2500 Support Services – Business \$721,600.53

General Fund (10)

2510 Fiscal Services

Elementary Secondary Federal Total

100	<u>Personnel Services – Salaries</u>			
	100 Personnel Services – Salaries			361,980.35
Total Personnel Services – Salaries				\$361,980.35
200	<u>Personnel Services – Employee Benefits</u>			
	210 Group Insurance – Contracted Provider			655.20
	220 Social Security Contributions			26,839.79
	230 PSERS Retirement Contributions			124,830.57
	260 Workers' Compensation			2,833.14
	270 Group Insurance – Self-Insurance			76,264.95
	299 All Other Employee Benefits			9,637.89
Total Personnel Services – Employee Benefits				\$241,061.54
300	<u>Purchased Professional and Technical Services</u>			
	340 Technical Services			28,985.10
Total Purchased Professional and Technical Services				\$28,985.10
400	<u>Purchased Property Services</u>			
	430 Repairs and Maintenance Services			15,411.58
Total Purchased Property Services				\$15,411.58
500	<u>Other Purchased Services</u>			
	530 Communications			35,512.53
	580 Travel			554.07
Total Other Purchased Services				\$36,066.60
600	<u>Supplies</u>			
	610 General Supplies			4,605.66
	630 Food			57.41
	650 Supplies & Fees – Technology Related			3,236.17
Total Supplies				\$7,899.24
700	<u>Property</u>			
	766 Capitalized Technology Equipment – Replacement			4,767.72
Total Property				\$4,767.72
800	<u>Other Objects</u>			
	810 Dues and Fees			740.33
	890 Miscellaneous Expenditures			24,688.07
Total Other Objects				\$25,428.40
Total 2510 Fiscal Services				\$721,600.53

General Fund (10)

2511 Supervision of Fiscal Services - Head of Component

Elementary Secondary Federal Total

100	<u>Personnel Services – Salaries</u>			
	100 Personnel Services – Salaries			219,136.00
Total Personnel Services – Salaries				\$219,136.00
200	<u>Personnel Services – Employee Benefits</u>			
	210 Group Insurance – Contracted Provider			504.00
	220 Social Security Contributions			16,804.45
	230 PSERS Retirement Contributions			75,624.01
	260 Workers' Compensation			1,715.13
	270 Group Insurance – Self-Insurance			30,505.98
	299 All Other Employee Benefits			9,637.89
Total Personnel Services – Employee Benefits				\$134,791.46
500	<u>Other Purchased Services</u>			
	580 Travel			546.13
Total Other Purchased Services				\$546.13
800	<u>Other Objects</u>			
	810 Dues and Fees			740.33
Total Other Objects				\$740.33
Total 2511 Supervision of Fiscal Services - Head of Component				\$355,213.92

General Fund (10)

2515 Financial Accounting Services

Elementary

Secondary

Federal

Total

100 Personnel Services – Salaries

100 Personnel Services – Salaries

142,844.35

Total Personnel Services – Salaries

\$142,844.35

200 Personnel Services – Employee Benefits

210 Group Insurance – Contracted Provider

151.20

220 Social Security Contributions

10,035.34

230 PSERS Retirement Contributions

49,206.56

260 Workers' Compensation

1,118.01

270 Group Insurance – Self-Insurance

45,758.97

Total Personnel Services – Employee Benefits

\$106,270.08

300 Purchased Professional and Technical Services

340 Technical Services

28,985.10

Total Purchased Professional and Technical Services

\$28,985.10

400 Purchased Property Services

430 Repairs and Maintenance Services

15,411.58

Total Purchased Property Services

\$15,411.58

500 Other Purchased Services

530 Communications

35,512.53

580 Travel

7.94

Total Other Purchased Services

\$35,520.47

600 Supplies

610 General Supplies

4,605.66

630 Food

57.41

650 Supplies & Fees – Technology Related

3,236.17

Total Supplies

\$7,899.24

700 Property

766 Capitalized Technology Equipment – Replacement

4,767.72

Total Property

\$4,767.72

800 Other Objects

890 Miscellaneous Expenditures

24,688.07

Total Other Objects

\$24,688.07

Total 2515 Financial Accounting Services

\$366,386.61

General Fund (10)

2600 Operation and Maintenance of Plant Services

Elementary Secondary Federal Total

100 Personnel Services – Salaries

100 Personnel Services – Salaries 1,144,974.43

Total Personnel Services – Salaries \$1,144,974.43

200 Personnel Services – Employee Benefits

210 Group Insurance – Contracted Provider 1,545.60

220 Social Security Contributions 82,417.99

230 PSERS Retirement Contributions 389,618.94

260 Workers' Compensation 8,961.45

270 Group Insurance – Self-Insurance 442,335.83

299 All Other Employee Benefits 4,133.53

Total Personnel Services – Employee Benefits \$929,013.34

300 Purchased Professional and Technical Services

322 Professional Educational Services – Ius 500.00

330 Other Professional Services 15,494.00

350 Security / Safety Services 82,510.90

390 Other Purchased Professional and Technical Services 13,126.01

Total Purchased Professional and Technical Services \$111,630.91

400 Purchased Property Services

410 Cleaning Services 43,890.00

420 Utility Services 48,667.58

430 Repairs and Maintenance Services 192,436.91

440 Rentals 666.87

Total Purchased Property Services \$285,661.36

500 Other Purchased Services

521 Fire Insurance 75,198.79

522 Automotive Liability Insurance 9,027.77

523 General Property and Liability Insurance 10,858.00

529 Other Insurance 6,466.71

530 Communications 112,049.96

580 Travel 285.49

Total Other Purchased Services \$213,886.72

600 Supplies

610 General Supplies 33,136.04 290,161.60 28,381.36 351,679.00

620 Energy 511,410.66

630 Food 295.75

650 Supplies & Fees – Technology Related 26,793.91

Total Supplies \$33,136.04 \$290,161.60 \$28,381.36 \$890,179.32

700 Property

752 Capital Equipment – Original and Additional 47,755.00

Total Property \$47,755.00

800 Other Objects

LEA : 113361303 Cocalico SD

Printed 11/9/2021 11:21:11 AM

General Fund (10)

2600 Operation and Maintenance of Plant Services

Elementary

Secondary

Federal

Total

800 Other Objects

810 Dues and Fees

250.00

890 Miscellaneous Expenditures

3,296.68

Total Other Objects

\$3,546.68

Total 2600 Operation and Maintenance of Plant Services

\$33,136.04

\$290,161.60

\$28,381.36

\$3,626,647.76

General Fund (10)

	<u>Elementary</u>	<u>Secondary</u>	<u>Federal</u>	<u>Total</u>
2610 Supervision of Operation and Maintenance of Plant Services				
100 Personnel Services – Salaries				
100 Personnel Services – Salaries				134,874.66
Total Personnel Services – Salaries				\$134,874.66
200 Personnel Services – Employee Benefits				
210 Group Insurance – Contracted Provider				176.40
220 Social Security Contributions				10,078.34
230 PSERS Retirement Contributions				46,545.21
260 Workers' Compensation				1,055.63
270 Group Insurance – Self-Insurance				30,505.98
299 All Other Employee Benefits				4,133.53
Total Personnel Services – Employee Benefits				\$92,495.09
400 Purchased Property Services				
430 Repairs and Maintenance Services				1,978.68
Total Purchased Property Services				\$1,978.68
600 Supplies				
610 General Supplies	2.44	485.15		487.59
630 Food				295.75
650 Supplies & Fees – Technology Related				5,038.91
Total Supplies	\$2.44	\$485.15		\$5,822.25
800 Other Objects				
810 Dues and Fees				250.00
Total Other Objects				\$250.00
Total 2610 Supervision of Operation and Maintenance of Plant Services	\$2.44	\$485.15		\$235,420.68

General Fund (10)

	<u>Elementary</u>	<u>Secondary</u>	<u>Federal</u>	<u>Total</u>
2611 Supervision of Operation and Maintenance of Plant Services – Head of Component				
100 Personnel Services – Salaries				
100 Personnel Services – Salaries				134,874.66
Total Personnel Services – Salaries				\$134,874.66
200 Personnel Services – Employee Benefits				
210 Group Insurance – Contracted Provider				176.40
220 Social Security Contributions				10,078.34
230 PSERS Retirement Contributions				46,545.21
260 Workers' Compensation				1,055.63
270 Group Insurance – Self-Insurance				30,505.98
299 All Other Employee Benefits				4,133.53
Total Personnel Services – Employee Benefits				\$92,495.09
400 Purchased Property Services				
430 Repairs and Maintenance Services				1,978.68
Total Purchased Property Services				\$1,978.68
600 Supplies				
610 General Supplies	2.44	485.15		487.59
630 Food				295.75
650 Supplies & Fees – Technology Related				5,038.91
Total Supplies	\$2.44	\$485.15		\$5,822.25
800 Other Objects				
810 Dues and Fees				250.00
Total Other Objects				\$250.00
Total 2611 Supervision of Operation and Maintenance of Plant Services – Head of Component	\$2.44	\$485.15		\$235,420.68

General Fund (10)

	<u>Elementary</u>	<u>Secondary</u>	<u>Federal</u>	<u>Total</u>
2620 Operation of Buildings Services				
100 Personnel Services – Salaries				
100 Personnel Services – Salaries				1,010,099.77
Total Personnel Services – Salaries				\$1,010,099.77
200 Personnel Services – Employee Benefits				
210 Group Insurance – Contracted Provider				1,369.20
220 Social Security Contributions				72,339.65
230 PSERS Retirement Contributions				343,073.73
260 Workers' Compensation				7,905.82
270 Group Insurance – Self-Insurance				411,829.85
Total Personnel Services – Employee Benefits				\$836,518.25
400 Purchased Property Services				
410 Cleaning Services				40,800.00
420 Utility Services				48,667.58
430 Repairs and Maintenance Services				190,458.23
440 Rentals				666.87
Total Purchased Property Services				\$280,592.68
500 Other Purchased Services				
521 Fire Insurance				75,198.79
522 Automotive Liability Insurance				9,027.77
523 General Property and Liability Insurance				10,858.00
529 Other Insurance				6,466.71
530 Communications				112,049.96
580 Travel				285.49
Total Other Purchased Services				\$213,886.72
600 Supplies				
610 General Supplies	33,049.03	272,847.71	28,381.36	334,278.10
620 Energy				511,410.66
Total Supplies	\$33,049.03	\$272,847.71	\$28,381.36	\$845,688.76
800 Other Objects				
890 Miscellaneous Expenditures				3,296.68
Total Other Objects				\$3,296.68
Total 2620 Operation of Buildings Services	\$33,049.03	\$272,847.71	\$28,381.36	\$3,190,082.86

General Fund (10)

2630 Care and Upkeep of Grounds Services

Elementary

Secondary

Federal

Total

400 Purchased Property Services

410 Cleaning Services

3,090.00

Total Purchased Property Services

\$3,090.00

Total 2630 Care and Upkeep of Grounds Services

\$3,090.00

General Fund (10)

2660 Safety and Security Services

300 Purchased Professional and Technical Services

	<u>Elementary</u>	<u>Secondary</u>	<u>Federal</u>	<u>Total</u>
322 Professional Educational Services – Ius				500.00
330 Other Professional Services				15,494.00
350 Security / Safety Services				82,510.90
390 Other Purchased Professional and Technical Services				13,126.01

Total Purchased Professional and Technical Services				\$111,630.91
--	--	--	--	---------------------

600 Supplies

610 General Supplies	84.57	16,828.74		16,913.31
650 Supplies & Fees – Technology Related				21,755.00

Total Supplies	\$84.57	\$16,828.74		\$38,668.31
-----------------------	----------------	--------------------	--	--------------------

700 Property

752 Capital Equipment – Original and Additional				47,755.00
---	--	--	--	-----------

Total Property				\$47,755.00
-----------------------	--	--	--	--------------------

Total 2660 Safety and Security Services	\$84.57	\$16,828.74		\$198,054.22
--	----------------	--------------------	--	---------------------

General Fund (10)

	<u>Elementary</u>	<u>Secondary</u>	<u>Federal</u>	<u>Total</u>
2700 Student Transportation Services				
100 Personnel Services – Salaries				
100 Personnel Services – Salaries				61,497.69
Total Personnel Services – Salaries				\$61,497.69
200 Personnel Services – Employee Benefits				
210 Group Insurance – Contracted Provider				88.20
220 Social Security Contributions				4,521.51
230 PSERS Retirement Contributions				21,222.93
260 Workers' Compensation				481.33
270 Group Insurance – Self-Insurance				16,024.55
299 All Other Employee Benefits				1,417.18
Total Personnel Services – Employee Benefits				\$43,755.70
400 Purchased Property Services				
430 Repairs and Maintenance Services				3,617.88
Total Purchased Property Services				\$3,617.88
500 Other Purchased Services				
513 Contracted Carriers				2,295,265.40
519 Student Transportation Services From Other Sources				10,199.32
580 Travel				295.10
Total Other Purchased Services				\$2,305,759.82
600 Supplies				
610 General Supplies				3,728.48
630 Food				263.00
650 Supplies & Fees – Technology Related				53,815.94
Total Supplies				\$57,807.42
700 Property				
752 Capital Equipment – Original and Additional				3,991.00
Total Property				\$3,991.00
800 Other Objects				
810 Dues and Fees				226.00
Total Other Objects				\$226.00
Total 2700 Student Transportation Services				\$2,476,655.51

General Fund (10)

2711 Supervision of Student Transportation Services – Head of Component

Elementary Secondary Federal Total

100 Personnel Services – Salaries				
100 Personnel Services – Salaries				61,497.69
Total Personnel Services – Salaries				\$61,497.69
200 Personnel Services – Employee Benefits				
210 Group Insurance – Contracted Provider				88.20
220 Social Security Contributions				4,521.51
230 PSERS Retirement Contributions				21,222.93
260 Workers' Compensation				481.33
270 Group Insurance – Self-Insurance				16,024.55
299 All Other Employee Benefits				1,417.18
Total Personnel Services – Employee Benefits				\$43,755.70
400 Purchased Property Services				
430 Repairs and Maintenance Services				3,617.88
Total Purchased Property Services				\$3,617.88
500 Other Purchased Services				
580 Travel				295.10
Total Other Purchased Services				\$295.10
600 Supplies				
610 General Supplies				3,728.48
630 Food				263.00
650 Supplies & Fees – Technology Related				53,815.94
Total Supplies				\$57,807.42
700 Property				
752 Capital Equipment – Original and Additional				3,991.00
Total Property				\$3,991.00
800 Other Objects				
810 Dues and Fees				226.00
Total Other Objects				\$226.00
Total 2711 Supervision of Student Transportation Services – Head of Component				\$171,190.79

LEA : 113361303 Cocalico SD

Printed 11/9/2021 11:21:11 AM

General Fund (10)

2720 Vehicle Operation Services

Elementary

Secondary

Federal

Total

500 Other Purchased Services

513 Contracted Carriers

2,150,662.60

519 Student Transportation Services From Other Sources

10,199.32

Total Other Purchased Services

\$2,160,861.92

Total 2720 Vehicle Operation Services

\$2,160,861.92

LEA : 113361303 Cocalico SD

Printed 11/9/2021 11:21:11 AM

General Fund (10)

2750 Nonpublic Transportation

Elementary

Secondary

Federal

Total

500 Other Purchased Services

513 Contracted Carriers

144,602.80

Total Other Purchased Services

\$144,602.80

Total 2750 Nonpublic Transportation

\$144,602.80

General Fund (10)

2800 Support Services – Central

	<u>Elementary</u>	<u>Secondary</u>	<u>Federal</u>	<u>Total</u>
100 Personnel Services – Salaries				
100 Personnel Services – Salaries				628,344.64
Total Personnel Services – Salaries				\$628,344.64
200 Personnel Services – Employee Benefits				
210 Group Insurance – Contracted Provider				1,184.40
220 Social Security Contributions				46,589.77
230 PSERS Retirement Contributions				208,210.49
240 Tuition Reimbursement			2,736.30	56,074.70
250 Unemployment Compensation				457.67
260 Workers' Compensation				4,917.91
270 Group Insurance – Self-Insurance				137,276.90
299 All Other Employee Benefits				15,097.40
Total Personnel Services – Employee Benefits			\$2,736.30	\$469,809.24
300 Purchased Professional and Technical Services				
322 Professional Educational Services – Ius				26,341.00
330 Other Professional Services				3,312.00
340 Technical Services				74,942.26
360 Employee Training and Development Services				8,984.50
390 Other Purchased Professional and Technical Services				673.50
Total Purchased Professional and Technical Services				\$114,253.26
400 Purchased Property Services				
430 Repairs and Maintenance Services				1,984.01
Total Purchased Property Services				\$1,984.01
500 Other Purchased Services				
530 Communications				4,008.04
549 Other Advertising/Public Relations				5,561.42
550 Printing and Binding				27,209.21
580 Travel				7,689.90
Total Other Purchased Services				\$44,468.57
600 Supplies				
610 General Supplies				8,199.88
630 Food				110.58
650 Supplies & Fees – Technology Related				120,058.46
Total Supplies				\$128,368.92
700 Property				
766 Capitalized Technology Equipment – Replacement				8,646.24
Total Property				\$8,646.24
800 Other Objects				
810 Dues and Fees				877.34
Total Other Objects				\$877.34
Total 2800 Support Services – Central			\$2,736.30	\$1,396,752.22

General Fund (10)

2810 Planning, Research, Development and Evaluation Services

Elementary

Secondary

Federal

Total

100 Personnel Services – Salaries

100 Personnel Services – Salaries 452,215.47

Total Personnel Services – Salaries \$452,215.47

200 Personnel Services – Employee Benefits

210 Group Insurance – Contracted Provider 756.00

220 Social Security Contributions 33,318.15

230 PSERS Retirement Contributions 151,567.48

250 Unemployment Compensation 457.67

260 Workers' Compensation 3,539.39

270 Group Insurance – Self-Insurance 106,770.92

299 All Other Employee Benefits 9,340.23

Total Personnel Services – Employee Benefits \$305,749.84

300 Purchased Professional and Technical Services

322 Professional Educational Services – lus 26,341.00

340 Technical Services 74,942.26

Total Purchased Professional and Technical Services \$101,283.26

400 Purchased Property Services

430 Repairs and Maintenance Services 1,984.01

Total Purchased Property Services \$1,984.01

500 Other Purchased Services

530 Communications 256.48

580 Travel 1,915.64

Total Other Purchased Services \$2,172.12

600 Supplies

610 General Supplies 6,967.60

630 Food 32.00

650 Supplies & Fees – Technology Related 111,150.10

Total Supplies \$118,149.70

700 Property

766 Capitalized Technology Equipment – Replacement 5,858.00

Total Property \$5,858.00

800 Other Objects

810 Dues and Fees 250.00

Total Other Objects \$250.00

Total 2810 Planning, Research, Development and Evaluation Services \$987,662.40

LEA : 113361303 Cocalico SD

Printed 11/9/2021 11:21:11 AM

General Fund (10)

2820 Information Services

Elementary

Secondary

Federal

Total

500 Other Purchased Services

530 Communications

3,751.56

550 Printing and Binding

27,209.21

Total Other Purchased Services

\$30,960.77

Total 2820 Information Services

\$30,960.77

LEA : 113361303 Cocalico SD

Printed 11/9/2021 11:21:11 AM

General Fund (10)

2823 Public Information Services

Elementary

Secondary

Federal

Total

500 Other Purchased Services

530 Communications

3,751.56

550 Printing and Binding

27,209.21

Total Other Purchased Services

\$30,960.77

Total 2823 Public Information Services

\$30,960.77

General Fund (10)

2830 Staff Services

	<u>Elementary</u>	<u>Secondary</u>	<u>Federal</u>	<u>Total</u>
100 Personnel Services – Salaries				
100 Personnel Services – Salaries				176,129.17
Total Personnel Services – Salaries				\$176,129.17
200 Personnel Services – Employee Benefits				
210 Group Insurance – Contracted Provider				428.40
220 Social Security Contributions				13,271.62
230 PSERS Retirement Contributions				56,643.01
240 Tuition Reimbursement			2,736.30	56,074.70
260 Workers' Compensation				1,378.52
270 Group Insurance – Self-Insurance				30,505.98
299 All Other Employee Benefits				5,757.17
Total Personnel Services – Employee Benefits			\$2,736.30	\$164,059.40
300 Purchased Professional and Technical Services				
330 Other Professional Services				3,312.00
360 Employee Training and Development Services				8,984.50
390 Other Purchased Professional and Technical Services				673.50
Total Purchased Professional and Technical Services				\$12,970.00
500 Other Purchased Services				
549 Other Advertising/Public Relations				5,561.42
580 Travel				5,774.26
Total Other Purchased Services				\$11,335.68
600 Supplies				
610 General Supplies				1,232.28
630 Food				78.58
650 Supplies & Fees – Technology Related				8,908.36
Total Supplies				\$10,219.22
700 Property				
766 Capitalized Technology Equipment– Replacement				2,788.24
Total Property				\$2,788.24
800 Other Objects				
810 Dues and Fees				627.34
Total Other Objects				\$627.34
Total 2830 Staff Services			\$2,736.30	\$378,129.05

General Fund (10)

2831 Supervision of Staff Services

Elementary Secondary Federal Total

100 Personnel Services – Salaries

100 Personnel Services – Salaries 164,135.42

Total Personnel Services – Salaries \$164,135.42

200 Personnel Services – Employee Benefits

210 Group Insurance – Contracted Provider 428.40

220 Social Security Contributions 12,383.83

230 PSERS Retirement Contributions 56,643.01

260 Workers' Compensation 1,378.52

270 Group Insurance – Self-Insurance 30,505.98

299 All Other Employee Benefits 5,757.17

Total Personnel Services – Employee Benefits \$107,096.91

300 Purchased Professional and Technical Services

390 Other Purchased Professional and Technical Services 673.50

Total Purchased Professional and Technical Services \$673.50

500 Other Purchased Services

549 Other Advertising/Public Relations 5,561.42

Total Other Purchased Services \$5,561.42

600 Supplies

610 General Supplies 1,232.28

630 Food 78.58

650 Supplies & Fees – Technology Related 8,908.36

Total Supplies \$10,219.22

700 Property

766 Capitalized Technology Equipment – Replacement 2,788.24

Total Property \$2,788.24

800 Other Objects

810 Dues and Fees 627.34

Total Other Objects \$627.34

Total 2831 Supervision of Staff Services \$291,102.05

General Fund (10)

2834 Staff Development Services – Non-Instructional, Certified Staff Only

Elementary

Secondary

Federal

Total

200 Personnel Services – Employee Benefits

240 Tuition Reimbursement

2,736.30

56,074.70

Total Personnel Services – Employee Benefits

\$2,736.30

\$56,074.70

300 Purchased Professional and Technical Services

360 Employee Training and Development Services

4,676.50

Total Purchased Professional and Technical Services

\$4,676.50

500 Other Purchased Services

580 Travel

4,760.53

Total Other Purchased Services

\$4,760.53

Total 2834 Staff Development Services – Non-Instructional, Certified Staff Only

\$2,736.30

\$65,511.73

General Fund (10)

2835 Health Services

Elementary

Secondary

Federal

Total

300 Purchased Professional and Technical Services

330 Other Professional Services

3,312.00

Total Purchased Professional and Technical Services

\$3,312.00

Total 2835 Health Services

\$3,312.00

General Fund (10)

2836 Staff Development Services – Non-Instructional, Non-Certified Staff Only

Elementary

Secondary

Federal

Total

100 Personnel Services – Salaries

100 Personnel Services – Salaries

11,993.75

Total Personnel Services – Salaries

\$11,993.75

200 Personnel Services – Employee Benefits

220 Social Security Contributions

887.79

Total Personnel Services – Employee Benefits

\$887.79

300 Purchased Professional and Technical Services

360 Employee Training and Development Services

4,308.00

Total Purchased Professional and Technical Services

\$4,308.00

500 Other Purchased Services

580 Travel

1,013.73

Total Other Purchased Services

\$1,013.73

Total 2836 Staff Development Services – Non-Instructional, Non-Certified Staff Only

\$18,203.27

General Fund (10)

2900 Other Support Services

Elementary

Secondary

Federal

Total

500 Other Purchased Services

595 IU Payments By Withholding

24,030.60

Total Other Purchased Services

\$24,030.60

Total 2900 Other Support Services

\$24,030.60

General Fund (10)

2910 Support Services Not Listed Elsewhere In the 2000 Series

Elementary

Secondary

Federal

Total

500 Other Purchased Services

595 IU Payments By Withholding

24,030.60

Total Other Purchased Services

\$24,030.60

Total 2910 Support Services Not Listed Elsewhere In the 2000 Series

\$24,030.60

General Fund (10)

3000 Operation of Non-Instructional Services

Total

100 Personnel Services – Salaries

100 Personnel Services – Salaries 507,003.75

Total Personnel Services – Salaries

\$507,003.75

200 Personnel Services – Employee Benefits

210 Group Insurance – Contracted Provider 126.00

220 Social Security Contributions 38,416.28

230 PSERS Retirement Contributions 158,731.10

250 Unemployment Compensation 2,309.43

260 Workers' Compensation 3,968.21

270 Group Insurance – Self-Insurance 15,252.99

299 All Other Employee Benefits 4,133.53

Total Personnel Services – Employee Benefits

\$222,937.54

300 Purchased Professional and Technical Services

329 Professional Educational Services – Other 11,535.52

330 Other Professional Services 85,504.10

390 Other Purchased Professional and Technical Services 7,334.05

Total Purchased Professional and Technical Services

\$104,373.67

400 Purchased Property Services

430 Repairs and Maintenance Services 8,829.59

Total Purchased Property Services

\$8,829.59

500 Other Purchased Services

510 Student Transportation Services 50,127.10

520 Insurance – General 28,760.00

530 Communications 6,905.62

550 Printing and Binding 75.00

580 Travel 2,611.45

Total Other Purchased Services

\$88,479.17

600 Supplies

610 General Supplies 66,179.50

630 Food 959.41

650 Supplies & Fees – Technology Related 3,049.00

Total Supplies

\$70,187.91

700 Property

752 Capital Equipment – Original and Additional 1,595.00

Total Property

\$1,595.00

800 Other Objects

810 Dues and Fees 4,039.82

890 Miscellaneous Expenditures 1,581.50

Total Other Objects

\$5,621.32

Total 3000 Operation of Non-Instructional Services

\$1,009,027.95

General Fund (10)

3200 Student Activities

Elementary Secondary Federal Total

100	<u>Personnel Services – Salaries</u>			
	100 Personnel Services – Salaries			501,959.00
Total Personnel Services – Salaries				\$501,959.00
200	<u>Personnel Services – Employee Benefits</u>			
	210 Group Insurance – Contracted Provider			126.00
	220 Social Security Contributions			38,047.26
	230 PSERS Retirement Contributions			156,990.07
	250 Unemployment Compensation			2,309.43
	260 Workers' Compensation			3,928.73
	270 Group Insurance – Self-Insurance			15,252.99
	299 All Other Employee Benefits			4,133.53
Total Personnel Services – Employee Benefits				\$220,788.01
300	<u>Purchased Professional and Technical Services</u>			
	329 Professional Educational Services – Other			2,969.52
	330 Other Professional Services			85,504.10
	390 Other Purchased Professional and Technical Services			7,334.05
Total Purchased Professional and Technical Services				\$95,807.67
400	<u>Purchased Property Services</u>			
	430 Repairs and Maintenance Services			8,829.59
Total Purchased Property Services				\$8,829.59
500	<u>Other Purchased Services</u>			
	510 Student Transportation Services			50,127.10
	520 Insurance – General			28,760.00
	530 Communications			604.23
	550 Printing and Binding			75.00
	580 Travel			2,611.45
Total Other Purchased Services				\$82,177.78
600	<u>Supplies</u>			
	610 General Supplies			65,760.66
	630 Food			959.41
	650 Supplies & Fees – Technology Related			3,049.00
Total Supplies				\$69,769.07
700	<u>Property</u>			
	752 Capital Equipment – Original and Additional			1,595.00
Total Property				\$1,595.00
800	<u>Other Objects</u>			
	810 Dues and Fees			4,039.82
	890 Miscellaneous Expenditures			1,581.50
Total Other Objects				\$5,621.32
Total 3200 Student Activities				\$986,547.44

General Fund (10)

	<u>Elementary</u>	<u>Secondary</u>	<u>Federal</u>	<u>Total</u>
3300 Community Services				
100 Personnel Services – Salaries				
100 Personnel Services – Salaries			105.00	5,044.75
Total Personnel Services – Salaries			\$105.00	\$5,044.75
200 Personnel Services – Employee Benefits				
220 Social Security Contributions			6.89	369.02
230 PSERS Retirement Contributions			18.12	1,741.03
260 Workers’ Compensation			0.82	39.48
Total Personnel Services – Employee Benefits			\$25.83	\$2,149.53
300 Purchased Professional and Technical Services				
329 Professional Educational Services – Other				8,566.00
Total Purchased Professional and Technical Services				\$8,566.00
500 Other Purchased Services				
530 Communications				6,301.39
Total Other Purchased Services				\$6,301.39
600 Supplies				
610 General Supplies			418.84	418.84
Total Supplies			\$418.84	\$418.84
Total 3300 Community Services			\$549.67	\$22,480.51

General Fund (10)

5000 Other Expenditures and Financing Uses

Total

800 Other Objects

830 Interest 9,964.10

Total Other Objects \$9,964.10

900 Other Uses of Funds

910 Redemption of Principal 355,334.80

932 Capital Reserve Fund Transfers Applicable To Fund 32 3,013,398.32

939 Other Fund Transfers 1,206,582.02

Total Other Uses of Funds \$4,575,315.14

Total 5000 Other Expenditures and Financing Uses \$4,585,279.24

General Fund (10)

5100 Debt Service / Other Expenditures and Financing Uses	<u>Elementary</u>	<u>Secondary</u>	<u>Federal</u>	<u>Total</u>
800 <u>Other Objects</u>				
830 Interest				9,964.10
Total Other Objects				\$9,964.10
900 <u>Other Uses of Funds</u>				
910 Redemption of Principal				355,334.80
Total Other Uses of Funds				\$355,334.80
Total 5100 Debt Service / Other Expenditures and Financing Uses				\$365,298.90

General Fund (10)

	<u>Elementary</u>	<u>Secondary</u>	<u>Federal</u>	<u>Total</u>
5110 Debt Service				
800 Other Objects				
830 Interest				9,964.10
Total Other Objects				\$9,964.10
900 Other Uses of Funds				
910 Redemption of Principal				355,334.80
Total Other Uses of Funds				\$355,334.80
Total 5110 Debt Service				\$365,298.90

LEA : 113361303 Cocalico SD

Printed 11/9/2021 11:21:35 AM

General Fund (10)

	<u>Elementary</u>	<u>Secondary</u>	<u>Federal</u>	<u>Total</u>
5200 Interfund Transfers – Out				
900 Other Uses of Funds				
932 Capital Reserve Fund Transfers Applicable To Fund 32				3,013,398.32
939 Other Fund Transfers				1,206,582.02
Total Other Uses of Funds				\$4,219,980.34
Total 5200 Interfund Transfers – Out				\$4,219,980.34

LEA : 113361303 Cocalico SD

Printed 11/9/2021 11:21:35 AM

General Fund (10)

5230 Capital Projects Fund Transfers

Elementary

Secondary

Federal

Total

900 Other Uses of Funds

932 Capital Reserve Fund Transfers Applicable To Fund 32

3,013,398.32

Total Other Uses of Funds

\$3,013,398.32

Total 5230 Capital Projects Fund Transfers

\$3,013,398.32

LEA : 113361303 Cocalico SD

Printed 11/9/2021 11:21:35 AM

General Fund (10)

5240 Debt Service Fund Transfers

Elementary

Secondary

Federal

Total

900 Other Uses of Funds

939 Other Fund Transfers

1,206,582.02

Total Other Uses of Funds

\$1,206,582.02

Total 5240 Debt Service Fund Transfers

\$1,206,582.02

Student Sponsored Activity Fund (21)

	<u>Elementary</u>	<u>Secondary</u>	<u>Federal</u>	<u>Total</u>
3200 Student Activities				
300 <u>Purchased Professional and Technical Services</u>				
390 Other Purchased Professional and Technical Services				550.00
Total Purchased Professional and Technical Services				\$550.00
400 <u>Purchased Property Services</u>				
430 Repairs and Maintenance Services				553.00
Total Purchased Property Services				\$553.00
500 <u>Other Purchased Services</u>				
580 Travel				351.92
Total Other Purchased Services				\$351.92
600 <u>Supplies</u>				
610 General Supplies				9,468.24
630 Food				992.34
Total Supplies				\$10,460.58
800 <u>Other Objects</u>				
810 Dues and Fees				99.00
870 Donated Services				1,210.00
890 Miscellaneous Expenditures				1,653.50
Total Other Objects				\$2,962.50
Total 3200 Student Activities				\$14,878.00

LEA : 113361303 Cocalico SD

Printed 11/9/2021 11:21:15 AM

Capital Reserve Fund - § 1431 (32)

2000 Support Services

300 Purchased Professional and Technical Services

340 Technical Services 4,145.00

Total Purchased Professional and Technical Services \$4,145.00

400 Purchased Property Services

430 Repairs and Maintenance Services 49,931.56

Total Purchased Property Services \$49,931.56

500 Other Purchased Services

549 Other Advertising/Public Relations 3,872.85

Total Other Purchased Services \$3,872.85

600 Supplies

610 General Supplies 48,117.92

650 Supplies & Fees – Technology Related 18,120.57

Total Supplies \$66,238.49

700 Property

752 Capital Equipment – Original and Additional 205,723.04

762 Capitalized Equipment - Replacement 47,230.00

Total Property \$252,953.04

Total 2000 Support Services \$377,140.94

Capital Reserve Fund - § 1431 (32)

	<u>Elementary</u>	<u>Secondary</u>	<u>Federal</u>	<u>Total</u>
2600 Operation and Maintenance of Plant Services				
400 Purchased Property Services				
430 Repairs and Maintenance Services				49,931.56
Total Purchased Property Services				\$49,931.56
600 Supplies				
610 General Supplies	240.59	47,877.33		48,117.92
650 Supplies & Fees – Technology Related				7,196.34
Total Supplies	\$240.59	\$47,877.33		\$55,314.26
700 Property				
752 Capital Equipment – Original and Additional				205,723.04
762 Capitalized Equipment - Replacement				47,230.00
Total Property				\$252,953.04
Total 2600 Operation and Maintenance of Plant Services	\$240.59	\$47,877.33		\$358,198.86

LEA : 113361303 Cocalico SD

Printed 11/9/2021 11:21:15 AM

Capital Reserve Fund - § 1431 (32)

2620 Operation of Buildings Services

400 Purchased Property Services

430 Repairs and Maintenance Services

Total Purchased Property Services

600 Supplies

610 General Supplies

650 Supplies & Fees – Technology Related

Total Supplies

700 Property

752 Capital Equipment – Original and Additional

762 Capitalized Equipment - Replacement

Total Property

Total 2620 Operation of Buildings Services

	<u>Elementary</u>	<u>Secondary</u>	<u>Federal</u>	<u>Total</u>
				49,931.56
Total Purchased Property Services				\$49,931.56
				48,117.92
	240.59	47,877.33		7,196.34
Total Supplies	\$240.59	\$47,877.33		\$55,314.26
				205,723.04
				47,230.00
Total Property				\$252,953.04
Total 2620 Operation of Buildings Services	\$240.59	\$47,877.33		\$358,198.86

LEA : 113361303 Cocalico SD

Printed 11/9/2021 11:21:15 AM

Capital Reserve Fund - § 1431 (32)

2800 Support Services – Central

Elementary

Secondary

Federal

Total

300 Purchased Professional and Technical Services

340 Technical Services

4,145.00

Total Purchased Professional and Technical Services

\$4,145.00

500 Other Purchased Services

549 Other Advertising/Public Relations

3,872.85

Total Other Purchased Services

\$3,872.85

600 Supplies

650 Supplies & Fees – Technology Related

10,924.23

Total Supplies

\$10,924.23

Total 2800 Support Services – Central

\$18,942.08

LEA : 113361303 Cocalico SD

Printed 11/9/2021 11:21:15 AM

Capital Reserve Fund - § 1431 (32)

2810 Planning, Research, Development and Evaluation Services

Elementary

Secondary

Federal

Total

300 Purchased Professional and Technical Services

340 Technical Services

4,145.00

Total Purchased Professional and Technical Services

\$4,145.00

600 Supplies

650 Supplies & Fees – Technology Related

10,924.23

Total Supplies

\$10,924.23

Total 2810 Planning, Research, Development and Evaluation Services

\$15,069.23

LEA : 113361303 Cocalico SD

Printed 11/9/2021 11:21:15 AM

Capital Reserve Fund - § 1431 (32)

2830 Staff Services

Elementary

Secondary

Federal

Total

500 Other Purchased Services

549 Other Advertising/Public Relations

3,872.85

Total Other Purchased Services

\$3,872.85

Total 2830 Staff Services

\$3,872.85

LEA : 113361303 Cocalico SD

Printed 11/9/2021 11:21:15 AM

Capital Reserve Fund - § 1431 (32)

2831 Supervision of Staff Services

Elementary

Secondary

Federal

Total

500 Other Purchased Services

549 Other Advertising/Public Relations

3,872.85

Total Other Purchased Services

\$3,872.85

Total 2831 Supervision of Staff Services

\$3,872.85

Capital Reserve Fund - § 1431 (32)

4000 Facilities Acquisition, Construction and Improvement Services

Total

300 Purchased Professional and Technical Services

330 Other Professional Services

601,786.88

Total Purchased Professional and Technical Services

\$601,786.88

400 Purchased Property Services

450 Construction Services

3,719,807.50

490 Other Purchased Property Services

17,027.50

Total Purchased Property Services

\$3,736,835.00

Total 4000 Facilities Acquisition, Construction and Improvement Services

\$4,338,621.88

LEA : 113361303 Cocalico SD

Printed 11/9/2021 11:21:30 AM

Capital Reserve Fund - § 1431 (32)

4400 Architecture and Engineering Services / Educational Specifications – Improvements

Elementary

Secondary

Federal

Total

300 Purchased Professional and Technical Services

330 Other Professional Services

601,786.88

Total Purchased Professional and Technical Services

\$601,786.88

Total 4400 Architecture and Engineering Services / Educational Specifications – Improvements

\$601,786.88

LEA : 113361303 Cocalico SD

Printed 11/9/2021 11:21:30 AM

Capital Reserve Fund - § 1431 (32)

4600 Existing Building Improvement Services

Elementary

Secondary

Federal

Total

400 Purchased Property Services

450 Construction Services

3,719,807.50

490 Other Purchased Property Services

17,027.50

Total Purchased Property Services

\$3,736,835.00

Total 4600 Existing Building Improvement Services

\$3,736,835.00

LEA : 113361303 Cocalico SD

Printed 11/9/2021 11:21:17 AM

Debt Service Fund (40)

2000 Support Services

800 Other Objects

890 Miscellaneous Expenditures

Total Other Objects

Total 2000 Support Services

Total

500.00

\$500.00

\$500.00

LEA : 113361303 Cocalico SD

Printed 11/9/2021 11:21:17 AM

Debt Service Fund (40)

2500 Support Services – Business

Elementary

Secondary

Federal

Total

800 Other Objects

890 Miscellaneous Expenditures

500.00

Total Other Objects

\$500.00

Total 2500 Support Services – Business

\$500.00

LEA : 113361303 Cocalico SD

Printed 11/9/2021 11:21:17 AM

Debt Service Fund (40)

2510 Fiscal Services

Elementary

Secondary

Federal

Total

800 Other Objects

890 Miscellaneous Expenditures

500.00

Total Other Objects

\$500.00

Total 2510 Fiscal Services

\$500.00

LEA : 113361303 Cocalico SD

Printed 11/9/2021 11:21:17 AM

Debt Service Fund (40)

2515 Financial Accounting Services

Elementary

Secondary

Federal

Total

800 Other Objects

890 Miscellaneous Expenditures

500.00

Total Other Objects

\$500.00

Total 2515 Financial Accounting Services

\$500.00

Debt Service Fund (40)

5000 Other Expenditures and Financing Uses

Total

800 Other Objects

830 Interest 21,082.02

Total Other Objects \$21,082.02

900 Other Uses of Funds

910 Redemption of Principal 1,185,000.00

Total Other Uses of Funds \$1,185,000.00

Total 5000 Other Expenditures and Financing Uses \$1,206,082.02

Debt Service Fund (40)

5100 Debt Service / Other Expenditures and Financing Uses	<u>Elementary</u>	<u>Secondary</u>	<u>Federal</u>	<u>Total</u>
800 <u>Other Objects</u>				
830 Interest				21,082.02
Total Other Objects				\$21,082.02
900 <u>Other Uses of Funds</u>				
910 Redemption of Principal				1,185,000.00
Total Other Uses of Funds				\$1,185,000.00
Total 5100 Debt Service / Other Expenditures and Financing Uses				\$1,206,082.02

LEA : 113361303 Cocalico SD

Printed 11/9/2021 11:21:37 AM

Debt Service Fund (40)

	<u>Elementary</u>	<u>Secondary</u>	<u>Federal</u>	<u>Total</u>
5110 Debt Service				
800 Other Objects				
830 Interest				21,082.02
Total Other Objects				\$21,082.02
900 Other Uses of Funds				
910 Redemption of Principal				1,185,000.00
Total Other Uses of Funds				\$1,185,000.00
Total 5110 Debt Service				\$1,206,082.02

	<u>General Fund(10)</u>	<u>Student Sponsored Activity Fund(21)</u>	<u>Public Purpose Trust(27)</u>	<u>Other Compt Approved (28)</u>	<u>Athletic / Activity(29)</u>
1000 Instruction					
1100 Regular Programs - Elementary / Secondary	26,743,407.47				
1200 Special Programs - Elementary / Secondary	9,763,442.33				
1300 Vocational Education	1,177,447.10				
1400 Other Instructional Programs - Elementary / Secondary	126,417.04				
1500 Nonpublic School Programs	11,193.06				
Total Instruction	\$37,821,907.00				
2000 Support Services					
2100 Support Services - Students	2,205,169.20				
2200 Support Services - Instructional Staff	2,588,645.89				
2300 Support Services - Administration	3,703,297.25				
2400 Support Services - Pupil Health	622,639.38				
2500 Support Services - Business	721,600.53				
2600 Operation and Maintenance of Plant Services	3,626,647.76				
2700 Student Transportation Services	2,476,655.51				
2800 Support Services - Central	1,396,752.22				
2900 Other Support Services	24,030.60				
Total Support Services	\$17,365,438.34				
3000 Operation of Non-Instructional Services					
3200 Student Activities	986,547.44	14,878.00			
3300 Community Services	22,480.51				
Total Operation of Non-Instructional Services	\$1,009,027.95	\$14,878.00			
4000 Facilities Acquisition, Construction and Improvement Services					
4400 Architecture and Engineering Services / Educational Specifications - Improvements					
4600 Existing Building Improvement Services					
Total Facilities Acquisition, Construction and Improvement Services					
5000 Other Expenditures and Financing Uses					
5100 Debt Service / Other Expenditures and Financing Uses	365,298.90				
5200 Interfund Transfers - Out	4,219,980.34				
Total Other Expenditures and Financing Uses	\$4,585,279.24				
TOTAL ACTUAL EXPENDITURES & OTHER FINANCING USES	\$60,781,652.53	\$14,878.00			

	<u>Capital Reserve (690.1850)(31)</u>	<u>Capital Reserve (1431)(32)</u>	<u>Other Capital Projects Fund(39)</u>	<u>Debt Service(40)</u>	<u>Permanent(90)</u>
1000 Instruction					
1100 Regular Programs - Elementary / Secondary					
1200 Special Programs - Elementary / Secondary					
1300 Vocational Education					
1400 Other Instructional Programs - Elementary / Secondary					
1500 Nonpublic School Programs					
Total Instruction					
2000 Support Services					
2100 Support Services - Students					
2200 Support Services - Instructional Staff					
2300 Support Services - Administration					
2400 Support Services - Pupil Health					
2500 Support Services - Business				500.00	
2600 Operation and Maintenance of Plant Services		358,198.86			
2700 Student Transportation Services					
2800 Support Services - Central		18,942.08			
2900 Other Support Services					
Total Support Services		\$377,140.94		\$500.00	
3000 Operation of Non-Instructional Services					
3200 Student Activities					
3300 Community Services					
Total Operation of Non-Instructional Services					
4000 Facilities Acquisition, Construction and Improvement Services					
4400 Architecture and Engineering Services / Educational Specifications - Improvements		601,786.88			
4600 Existing Building Improvement Services		3,736,835.00			
Total Facilities Acquisition, Construction and Improvement Services		\$4,338,621.88			
5000 Other Expenditures and Financing Uses					
5100 Debt Service / Other Expenditures and Financing Uses				1,206,082.02	
5200 Interfund Transfers - Out					
Total Other Expenditures and Financing Uses				\$1,206,082.02	
TOTAL ACTUAL EXPENDITURES & OTHER FINANCING USES		\$4,715,762.82		\$1,206,582.02	

Total

1000 Instruction	
1100 Regular Programs - Elementary / Secondary	26,743,407.47
1200 Special Programs - Elementary / Secondary	9,763,442.33
1300 Vocational Education	1,177,447.10
1400 Other Instructional Programs - Elementary / Secondary	126,417.04
1500 Nonpublic School Programs	11,193.06
Total Instruction	\$37,821,907.00
2000 Support Services	
2100 Support Services - Students	2,205,169.20
2200 Support Services - Instructional Staff	2,588,645.89
2300 Support Services - Administration	3,703,297.25
2400 Support Services - Pupil Health	622,639.38
2500 Support Services - Business	722,100.53
2600 Operation and Maintenance of Plant Services	3,984,846.62
2700 Student Transportation Services	2,476,655.51
2800 Support Services - Central	1,415,694.30
2900 Other Support Services	24,030.60
Total Support Services	\$17,743,079.28
3000 Operation of Non-Instructional Services	
3200 Student Activities	1,001,425.44
3300 Community Services	22,480.51
Total Operation of Non-Instructional Services	\$1,023,905.95
4000 Facilities Acquisition, Construction and Improvement Services	
4400 Architecture and Engineering Services / Educational Specifications - Improvements	601,786.88
4600 Existing Building Improvement Services	3,736,835.00
Total Facilities Acquisition, Construction and Improvement Services	\$4,338,621.88
5000 Other Expenditures and Financing Uses	
5100 Debt Service / Other Expenditures and Financing Uses	1,571,380.92
5200 Interfund Transfers - Out	4,219,980.34
Total Other Expenditures and Financing Uses	\$5,791,361.26
TOTAL ACTUAL EXPENDITURES & OTHER FINANCING USES	\$66,718,875.37

LEA : 113361303 Cocalico SD

Printed 11/9/2021 11:22:04 AM

PSERS Salary Data (Salary Data should relate to the General Fund only)

Amount Description	Amount
Total Salary Base for salaries subject to PSERS withholding	25,703,894.83
Total Federally Funded salaries subject to PSERS withholding	356,216.79
	<hr/>

Title I Expenditure Data

Amount Description	Amount
Expenditures Funded with Current Title I Funds	329,015.00
Expenditures Funded with Carry over Title I Funds	
Total Title I Expenditure Data	<hr/> \$329,015.00 <hr/>

Title IV Revenue Data

Amount Description	Amount
Revenue from Title IV-A-1: Student Support and Academic Enrichment Grants	31,718.00
Revenue from Title IV-B: 21st Century Community Learning Centers	
	<hr/>

Title V Revenue Data

Amount Description	Amount
Revenue from Title V-B-2: Rural and Low-Income School Programs	
Revenue from Title V-B-1: Small Rural School Achievement (Directly from the Federal Govt)	
	<hr/>

1 .	<u>Current Special Education Expenditures/Expenses within Functions 1000, 2000, 3100, and 3200</u>	7,936,442.52
2 .	<u>Current Special Education Expenditures for Instruction Functions 1000 and 3200</u>	5,801,536.23
3 .	<u>Current Special Education Expenditures for Pupil Support Services Function 2100</u>	806,453.66
4 .	<u>Current Special Education Expenditures for Instructional Staff Support Services Function 2200</u>	511,382.78
5 .	<u>Current Special Education Expenditures for Student Transportation Support Services Function 2700</u>	763,305.26

Note: Do not report total Special Education expenditures for the functions listed above. Refer to the AFR User Manual for specific instructions on Funds/Functions/Objects to be included and excluded on each line.

Benefits for Staff Relative to Collective Bargaining Agreements

	OBJECT	COVERED	NOT COVERED	TOTAL
10 General Fund				
	211 Medical Insurance			
	212 Dental Insurance			
	215 Eye Care Insurance			
	216 Prescription Insurance			
	271 Self-Insurance Medical Benefits	2,726,688.98	1,180,338.70	3,907,027.68
	272 Self-Insurance Dental Benefits	233,394.70	93,769.44	327,164.14
	275 Self-Insurance Eye Care Benefits	111,197.24	45,026.86	156,224.10
	276 Self-Insurance Prescription Benefits	1,092,536.01	439,003.03	1,531,539.04
	FUND TOTAL	\$4,163,816.93	\$1,758,138.03	\$5,921,954.96
50 Enterprise Fund				
	211 Medical Insurance			
	212 Dental Insurance			
	215 Eye Care Insurance			
	216 Prescription Insurance			
	271 Self-Insurance Medical Benefits		101,279.85	101,279.85
	272 Self-Insurance Dental Benefits		6,101.19	6,101.19
	275 Self-Insurance Eye Care Benefits		1,220.23	1,220.23
	276 Self-Insurance Prescription Benefits		13,422.64	13,422.64
	FUND TOTAL		\$122,023.91	\$122,023.91
60 Internal Service Fund	No Self Insurance data to report			
	211 Medical Insurance			
	212 Dental Insurance			
	215 Eye Care Insurance			
	216 Prescription Insurance			
	271 Self-Insurance Medical Benefits			
	272 Self-Insurance Dental Benefits			
	275 Self-Insurance Eye Care Benefits			
	276 Self-Insurance Prescription Benefits			
	FUND TOTAL			
Total of All Funds		\$4,163,816.93	\$1,880,161.94	\$6,043,978.87

LEA : 113361303 Cocalico SD

Printed 11/9/2021 11:22:14 AM

Function	Special Education (Prior Year)	Nonspecial Education (Prior Year)	Total (Prior Year)	Special Education (Current Year)	Nonspecial Education (Current Year)	Total (Current Year)
2120 Guidance Services		1,214,515.63	1,214,515.63		1,309,792.40	1,309,792.40
2140 Psychological Services	563,182.80		563,182.80	554,942.02		554,942.02
2150 Speech Pathology and Audiology Services						
2160 Social Work Services	237,648.95		237,648.95	251,511.64		251,511.64
2260 Instruction and Curriculum Development Services	369,730.87	270,336.64	640,067.51	509,036.66	290,252.98	799,289.64
2350 Legal and Accounting Services	12,252.96	20,657.50	32,910.46	15,373.46	23,064.50	38,437.96
2420 Medical Services		6,235.82	6,235.82		5,293.05	5,293.05
2440 Nursing Services		586,689.08	586,689.08		617,264.34	617,264.34
2700 Student Transportation Services	521,136.20	1,638,849.77	2,159,985.97	763,305.26	1,713,350.25	2,476,655.51
Total	\$1,703,951.78	\$3,737,284.44	\$5,441,236.22	\$2,094,169.04	\$3,959,017.52	\$6,053,186.56

(PRINCIPAL AMOUNTS ONLY)

GOVERNMENTAL FUNDS/ ACTIVITIES

	Short-Term Borrowing	General Obligation Bonds/Notes	Authority Building Obligations	Other Long-Term Debt	Other Post-Employment Benefits (OPEB)	Compensated Absences	Net Pension Liability	Total
1. Debt at Beginning of Fiscal Year		1,185,000.00		904,373.48	6,619,000.00	4,178,681.00	79,086,000.00	91,973,054.48
2. Additional Debt Incurred During Year				366,130.00	1,860,000.00	522,933.00	5,842,000.00	8,591,063.00
3. Retirements and Repayments		1,185,000.00		357,536.00		212,944.00		1,755,480.00
4. Debt at End of Fiscal Year				912,967.48	8,479,000.00	4,488,670.00	84,928,000.00	98,808,637.48
5. Accreted Interest at End Of Fiscal Year								
6. Total Debt and Accreted Interest				912,967.48	8,479,000.00	4,488,670.00	84,928,000.00	98,808,637.48
7. Current Portion P&I - Due within 1 year				360,226.00				360,226.00
8. Interest Paid during current fiscal year		21,082.00		9,964.10				31,046.10

(PRINCIPAL AMOUNTS ONLY)

PROPRIETARY FUNDS

	Short-Term Borrowing	General Obligation Bonds/Notes	Authority Building Obligations	Other Long-Term Debt	Other Post-Employment Benefits (OPEB)	Compensated Absences	Net Pension Liability	Total
1. Debt at Beginning of Fiscal Year					135,000.00	70,849.00	1,614,000.00	1,819,849.00
2. Additional Debt Incurred During Year					38,000.00	22,429.00	119,000.00	179,429.00
3. Retirements and Repayments						6,465.00		6,465.00
4. Debt at End of Fiscal Year					173,000.00	86,813.00	1,733,000.00	1,992,813.00
5. Accreted Interest at End Of Fiscal Year								
6. Total Debt and Accreted Interest					173,000.00	86,813.00	1,733,000.00	1,992,813.00
7. Current Portion P&I - Due within 1 year								
8. Interest Paid during current fiscal year								

Total Principal and Interest Payments Made by Your School - All Funds

Function	Fund		Principal (910)	Principal (920)	Interest (830)	Total (Principal +Interest)	Misc Other Uses (990)
5110	10	General Fund	355,334.80		9,964.10	365,298.90	
5110	20	Special Revenue Funds					
5110	30	Capital Projects Funds					
5110	40	Debt Service Fund	1,185,000.00		21,082.02	1,206,082.02	
5110	90	Permanent Fund					
5120	10	General Fund					
5120	20	Special Revenue Funds					
5120	30	Capital Projects Funds					
5120	40	Debt Service Fund					

Total Debt Payments - Governmental Funds			\$1,540,334.80		\$31,046.12	\$1,571,380.92	
---	--	--	-----------------------	--	--------------------	-----------------------	--

Function	Fund		Principal (910)	Principal (920)	Interest (830)	Total (Principal +Interest)
5110	50	Enterprise Fund				
5110	60	Internal Service Fund				
5120	50	Enterprise Fund				
5120	60	Internal Service Fund				

Total Debt Payments - Proprietary Funds							
--	--	--	--	--	--	--	--

Debt Details
Governmental Funds/ Activities

Debt Category	Debt Issue Date (MM/YYYY)	Principal Amounts Only			Debt at End of Fiscal Year	Current Portion Due Within One Year (Principal and Interest)	Interest Paid During Fiscal Year
		Debt at Beginning of Fiscal Year	Additions	Reductions / Repayments			
General Obligation Bonds/Notes – CIB	05/2016	770,000.00		770,000.00		12,782.00	
General Obligation Bonds/Notes – CIB	01/2010	415,000.00		415,000.00		8,300.00	
Other Long Term Debt/Liabilities		904,373.48	366,130.00	357,536.00	912,967.48	9,964.10	
Compensated Absences		4,178,681.00	522,933.00	212,944.00	4,488,670.00		
Other Post-Employment Benefits (OPEB)		6,619,000.00	1,860,000.00		8,479,000.00		
Net Pension Liability		79,086,000.00	5,842,000.00		84,928,000.00		
Totals for Debt Entered:		\$91,973,054.48	\$8,591,063.00	\$1,755,480.00	\$98,808,637.48	\$360,226.00	

Bond Details
Proprietary Funds

Debt Category	Debt Issue Date (MM/YYYY)	Principal Amounts Only			Debt at End of Fiscal Year	Current Portion Due Within One Year (Principal and Interest)	Interest Paid During Fiscal Year
		Debt at Beginning of Fiscal Year	Additions	Reductions / Repayments			
Compensated Absences		70,849.00	22,429.00	6,465.00	86,813.00		
Other Post-Employment Benefits (OPEB)		135,000.00	38,000.00		173,000.00		
Net Pension Liability		1,614,000.00	119,000.00		1,733,000.00		
Totals for Debt Entered:		\$1,819,849.00	\$179,429.00	\$6,465.00	\$1,992,813.00		

General Fund (10)

Section 1: Tuition/Purchased Services as Reported within Expenditure Detail

	Amount
Tuition Reported in General Fund Expenditures 1000-560	4,192,530.44
Purchased Services in General Fund Expenditures 1000-594 and 1000-597	1,247.16
Section 1 Total	\$4,193,777.60

Section 2: Tuition Paid to Institution Types During Fiscal Year

	Tuition Paid For Nonspecial Education	Tuition Paid For Special Education	Total
1 1306 Institutions			
2 Institutionalized Children's Programs			
3 Juveniles Incarcerated in Adult Facilities			
4 Residential Treatment Facilities			
5 Other Local Education Agencies	18,612.54	414,412.76	433,025.30
6 Brick and Mortar Charter Schools	16,084.89		16,084.89
7 Cyber Charter Schools	1,330,689.80	568,739.78	1,899,429.58
8 Career and Technology Centers	1,116,085.63		1,116,085.63
9 Approved Private Schools		54,944.12	54,944.12
10 PA Chartered Schools for the Deaf and Blind			
11 Private Residential Rehabilitative Institutions	37,153.91	105,724.29	142,878.20
12 Juvenile Detention Centers			
13 Special Program Jointures			
14 Other Tuition Not Included Elsewhere In This Section		531,329.88	531,329.88
Section 2 Total	\$2,518,626.77	\$1,675,150.83	\$4,193,777.60

Food Service / Cafeteria Operations Fund (51)

3000 Operation of Non-Instructional Services

Total

100 Personnel Services – Salaries

100 Personnel Services – Salaries 488,339.00

Total Personnel Services – Salaries \$488,339.00

200 Personnel Services – Employee Benefits

210 Group Insurance – Contracted Provider 415.00

220 Social Security Contributions 34,380.00

230 PSERS Retirement Contributions 178,558.00

250 Unemployment Compensation 986.00

260 Workers' Compensation 3,697.00

270 Group Insurance – Self-Insurance 122,024.00

280 Other Post-Employment Benefits (OPEB) 4,000.00

299 All Other Employee Benefits 4,133.00

Total Personnel Services – Employee Benefits \$348,193.00

300 Purchased Professional and Technical Services

322 Professional Educational Services – Ius 228.00

329 Professional Educational Services – Other 1,320.00

Total Purchased Professional and Technical Services \$1,548.00

400 Purchased Property Services

430 Repairs and Maintenance Services 751.00

Total Purchased Property Services \$751.00

600 Supplies

610 General Supplies 63,113.00

630 Food 534,983.00

650 Supplies & Fees – Technology Related 6,624.00

Total Supplies \$604,720.00

700 Property

740 Depreciation 5,572.00

Total Property \$5,572.00

800 Other Objects

810 Dues and Fees 1,112.00

Total Other Objects \$1,112.00

Total 3000 Operation of Non-Instructional Services \$1,450,235.00

Food Service / Cafeteria Operations Fund (51)

	<u>Elementary</u>	<u>Secondary</u>	<u>Federal</u>	<u>Total</u>
3100 Food Services				
100 Personnel Services – Salaries				
100 Personnel Services – Salaries				488,339.00
Total Personnel Services – Salaries				\$488,339.00
200 Personnel Services – Employee Benefits				
210 Group Insurance – Contracted Provider				415.00
220 Social Security Contributions				34,380.00
230 PSERS Retirement Contributions				178,558.00
250 Unemployment Compensation				986.00
260 Workers' Compensation				3,697.00
270 Group Insurance – Self-Insurance				122,024.00
280 Other Post-Employment Benefits (OPEB)				4,000.00
299 All Other Employee Benefits				4,133.00
Total Personnel Services – Employee Benefits				\$348,193.00
300 Purchased Professional and Technical Services				
322 Professional Educational Services – Ius				228.00
329 Professional Educational Services – Other				1,320.00
Total Purchased Professional and Technical Services				\$1,548.00
400 Purchased Property Services				
430 Repairs and Maintenance Services				751.00
Total Purchased Property Services				\$751.00
600 Supplies				
610 General Supplies				63,113.00
630 Food				534,983.00
650 Supplies & Fees – Technology Related				6,624.00
Total Supplies				\$604,720.00
700 Property				
740 Depreciation				5,572.00
Total Property				\$5,572.00
800 Other Objects				
810 Dues and Fees				1,112.00
Total Other Objects				\$1,112.00
Total 3100 Food Services				\$1,450,235.00

Internal Service Fund (60)

2000 Support Services

Total

200 Personnel Services – Employee Benefits

270 Group Insurance – Self-Insurance

6,795,487.00

Total Personnel Services – Employee Benefits

\$6,795,487.00

Total 2000 Support Services

\$6,795,487.00

Internal Service Fund (60)

2800 Support Services – Central

Elementary

Secondary

Federal

Total

200 Personnel Services – Employee Benefits

270 Group Insurance – Self-Insurance

6,795,487.00

Total Personnel Services – Employee Benefits

\$6,795,487.00

Total 2800 Support Services – Central

\$6,795,487.00

Internal Service Fund (60)

2830 Staff Services

Elementary

Secondary

Federal

Total

200 Personnel Services – Employee Benefits

270 Group Insurance – Self-Insurance

6,795,487.00

Total Personnel Services – Employee Benefits

\$6,795,487.00

Total 2830 Staff Services

\$6,795,487.00

LEA : 113361303 Cocalico SD

Printed 11/9/2021 11:22:25 AM

Internal Service Fund (60)

2835 Health Services

Elementary

Secondary

Federal

Total

200 Personnel Services – Employee Benefits

270 Group Insurance – Self-Insurance

6,795,487.00

Total Personnel Services – Employee Benefits

\$6,795,487.00

Total 2835 Health Services

\$6,795,487.00

	<u>Food Service(51)</u>	<u>Child Care Operations(52)</u>	<u>Other Enterprise(58)</u>	<u>Internal Service(60)</u>	<u>Total</u>
2000 <u>Support Services</u>					
2800 Support Services - Central				6,795,487.00	6,795,487.00
Total Support Services				\$6,795,487.00	\$6,795,487.00
3000 <u>Operation of Non-Instructional Services</u>					
3100 Food Services	1,450,235.00				1,450,235.00
Total Operation of Non-Instructional Services	\$1,450,235.00				\$1,450,235.00
TOTAL ACTUAL EXPENDITURES & OTHER FINANCING USES	\$1,450,235.00			\$6,795,487.00	\$8,245,722.00

LEA : 113361303 Cocalico SD

Printed 11/9/2021 11:22:45 AM

Fund	School	School Number	Local Personnel	Local Nonpersonnel	State Personnel	State Nonpersonnel	Federal Personnel	Federal Nonpersonnel	Total	Explanation
10	Adamstown El Sch	2510	3,725,779.55	616,746.89	1,669,077.37	276,290.71	95,353.53	9,131.56	6,392,379.61	
	Cocalico MS	6289	7,134,773.96	1,119,357.43	3,196,241.08	501,450.53	79,698.08	30,227.91	12,061,748.99	
	Cocalico SHS	6290	10,203,901.52	663,441.46	4,571,151.02	297,208.97	21,617.49	8,952.82	15,766,273.28	
	Denver El Sch	2506	4,318,134.57	743,698.68	1,934,440.98	333,162.65	120,058.49	14,974.57	7,464,469.94	
	Reamstown El Sch	5053	3,541,110.49	605,858.72	1,586,349.18	271,413.01	78,745.34	6,926.93	6,090,403.67	
Total			28,923,700.09	3,749,103.18	12,957,259.63	1,679,525.87	395,472.93	70,213.79	47,775,275.49	