

LEA Name : Cocalico SD
Address : 800 4th Street
Denver , PA 17517

County : Lancaster
AUN Number : 113361303
LEA Type : SD

Annual Financial Report Accuracy Certification Statement

For Fiscal Year Ending

6/30/2020

Pennsylvania Department of Education

&

Office of Comptroller Operations

PDE-2056: Intermediate Unit

PDE-2057: School District, AVTS/CTC, Charter School,
and Special Program Jointure

CERTIFICATION: By signing this page I agree that the electronic data submitted is a complete and accurate statement of the financial operations and status of the local education agency for the fiscal year. It has been prepared in accordance with generally accepted accounting principles and established Commonwealth of PA reporting guidelines.



Chief School Administrator Signature

Date

11/2/20



Board Secretary Signature

Date

10/30/2020

Lesley A Stricker

Contact Person

lstricker@cocalico.org

Contact Person E-mail Address

(717)336-1405

Ext :

Contact Person Telephone Number

(717)336-1415

Contact Person Fax Number

Audit Certification
Annual Financial Report:
For Fiscal Year Ending **6/30/2020**
(Pursuant to PA School Code Section 218(b))

LEA Name : Cocalico SD
AUN Number : 113361303
County : Lancaster

Audit Certification Due: 12/31/2020

This certification is applicable to the Annual Financial Report data submitted through the Consolidated Financial Reporting System (CFRS).

CERTIFICATION: By signing this page I agree that the financial statements of the school have been properly audited as noted above pursuant to Article XXIV, and in the auditor's professional opinion, the Annual Financial Report (PDE-2057) submitted through CFRS is materially consistent with the audited financial statements.

Chief School Administrator

Board Secretary

Ella Musser
Signature

11/2/20
Date

Pheni L. Stull
Signature

10/30/2020
Date

Lesley A Stricker

Contact Person

lstricker@cocalico.org

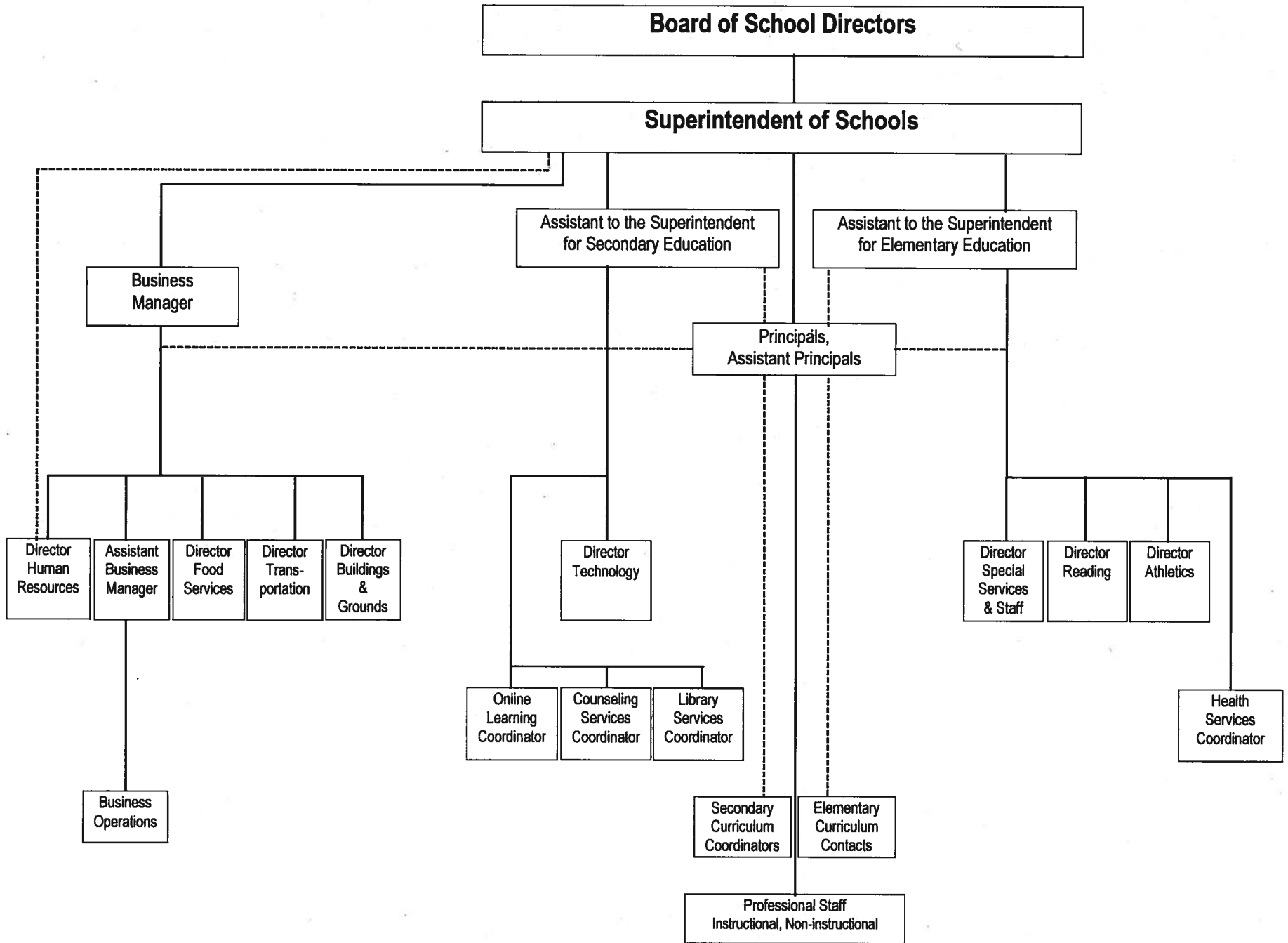
Contact Person E-mail Address

(717)336-1405 Ext :

Contact Person Telephone Number

(717)336-1415

Contact Person Fax Number





Book	Policy Manual
Section	600 Finances
Title	GASB Statement 34
Code	622
Status	Active
Adopted	July 20, 2009

Purpose

The district shall follow the requirements set forth by the Governmental Accounting Standards Board Statement No. 34 as it pertains to capital asset reporting.[\[1\]](#)

The primary objectives of implementing the GASB Statement 34 are to assure compliance with state requirements, and properly account for both the financial and economic resources of the district.

Definition

Capital assets shall include land, improvements to land, easements, buildings and building additions, building improvements, furniture, fixtures and equipment, vehicles, works of art and historical treasures, construction-in-progress and infrastructure. Capital assets are tangible assets used in operations and have initial useful lives extending beyond a single reporting period. Equipment will not change its original shape, appearance or character with use and it can be expected to last more than one (1) year with reasonable care and maintenance.

Authority

Participation of the school district in any such activity shall be in accordance with Board policy.[\[2\]](#)

Delegation of Responsibility

The responsibility to coordinate the compilation and preparation of all information necessary to implement this policy in accordance with district administrative procedures is delegated to the Business Manager, in cooperation with the local independent auditor.

The designated individual shall be responsible for implementing the necessary procedures to establish and maintain a fixed asset inventory, including depreciation schedules. Depreciation shall be computed on a straight-line basis over the estimated useful lives of the assets, using an averaging convention. Normal maintenance and repairs shall be charged to expense as incurred; major renewals and betterments that materially extend the life or increase the value of the asset shall be capitalized. A schedule of accumulated depreciation shall be consistent from year to year. The basis for depreciation, including groups of assets and useful lives, shall be in writing and submitted for review to the Board and independent auditors.

The Business Manager shall prepare the required Management Discussion and Analysis (MD&A). The MD&A shall be in the form required by GASB Statement 34 and shall be submitted to the Board for approval, prior to publication.

Prior to submission of the MD&A for Board approval, the district's independent auditors shall review the MD&A, in accordance with SAS No. 52, "Required Supplementary Information".

Guidelines

In order to associate debt with acquired assets and to avoid net asset deficits, any asset that has been acquired with debt proceeds shall be capitalized, regardless of the cost of the asset. The asset life of these assets shall be considered relative to the time of the respective debt amortizations.

The capitalization threshold shall be set at a level that will capture at least 80% of all fixed assets.

The assets listed below do not normally individually meet capitalization threshold criteria:

1. Library books.
2. Classroom texts.
3. Computer equipment.
4. Classroom furniture.

These asset category costs shall be capitalized and depreciated as groups when that group's acquisition cost exceeds the capitalization threshold in any given fiscal year.

For group asset depreciation purposes, the estimated useful life of the group may be based on the weighted average or simple average of the useful life of individual items, or on an assessment of the life of the group as a whole. Periodically, the district shall review the estimated life of groups of assets and adjust the remaining depreciation life of the group.

Assets that fall below the capitalization threshold for GASB 34 reporting purposes may still be significant for insurance, warranty service, and obsolescence/replacement policy tracking purposes. The district may record and maintain these non-GASB 34 asset inventories in subsidiary ledgers.

A capitalized asset shall be any asset acquired by donation or purchase that has a useful life of longer than one (1) year or extends the life of another capitalized asset or increases its value and meets a specific dollar threshold. At management's discretion, and in conjunction with the local auditor, capital assets purchased with long-term debt may be capitalized regardless of the specific dollar threshold for the type of class or asset acquired.

Value of Assets

All capitalized assets shall be recorded at historical cost at acquisition date or estimated cost if acquired prior to the date of the initial inventory. Any donated capital asset shall be recorded at the date of donation using the fair market value of the item at that date.

Dollar Threshold

A dollar threshold for each asset shall be set at an appropriate level. Management shall periodically review these levels with assistance from the local independent auditor and make any necessary modifications.

Legal

[1. 24 P.S. 613](#)

[2. 24 P.S. 218](#)

Governmental Accounting Standards Board, Statement No. 34

<u>Val Number</u>	<u>Description</u>	<u>Justification</u>
30685	Revenue Detail: Current Tax Revenue amount cannot exceed 50% variance from prior year amount. Correct the data or enter a justification. 6153, Current AFR Rev Detail: \$576,251.62 6153, Prior AFR Rev Detail: \$1,323,088.55	Large commercial property was sold during the 18/19 fiscal year. Bringing in a higher than normal realty transfer tax.
42420	Expenditure Detail: Total current year 2700-513 expenditure varies from prior year by 10%. Correct the data or enter a justification. 2700-513, AFR Exp Detail: \$2,028,754.73 2700-513, PY AFR Amount: \$2,337,878.87	Due to the school district shutting down in March, the full transportation contract was not paid out. Non-public transportation costs were also not paid for the month of April & May.
50450	SESS - 2350 Legal and Accounting Services: SESS Schedule amounts for Special Education vary from prior year by 40% or more. Correct the data or enter a justification. SESS Schedule 2350: \$12,252.96 Prior Year SESS Schedule 2350: \$2,670.27	Do to COVID and moving learning to online, the district incurred more legal costs in making sure we were being compliant with students IEPs.

Amounts Expressed in Whole Dollars	<u>General Fund</u> <u>(10)</u>	<u>Student Sponsored</u> <u>Activity Fund</u> <u>(21)</u>	<u>Public Purpose Trust</u> <u>(27)</u>	<u>Other Compt Approved</u> <u>(28)</u>	<u>Athletic / Activity</u> <u>(29)</u>
Assets And Deferred Outflows Of Resources					
Assets					
0100 Cash and Cash Equivalents	15,638,977				
0110 Investments	13,214,431				
0120 Taxes Receivable	1,328,590				
0130 Due From Other Funds					
0141 Due From Other Governments	1,906,957				
0142 State Revenue Receivable					
0143 Federal Revenue Receivable					
0145 Other Intergovernmental Revenue Receivable					
0146 Due from Primary Government					
0147 Due from Component Unit					
0150 Other Receivables	336,781				
0170 Inventories	48,684				
0180 Prepaid Expenses (Expenditures)	118,969				
0190 Other Current Assets					
Total Assets	\$32,593,389				
0910 Deferred Outflows of Resources					
Total Assets And Deferred Outflows Of Resources	\$32,593,389				

Amounts Expressed in Whole Dollars	<u>Capital Reserve (690.</u> <u>1850)</u> <u>(31)</u>	<u>Capital Reserve (1431)</u> <u>(32)</u>	<u>Other Capital Projects</u> <u>Fund</u> <u>(39)</u>	<u>Debt Service</u> <u>(40)</u>	<u>Permanent</u> <u>(90)</u>
Assets And Deferred Outflows Of Resources					
Assets					
0100 Cash and Cash Equivalents		9,196,368			
0110 Investments		1,384,139			
0120 Taxes Receivable					
0130 Due From Other Funds		5,000,000			
0141 Due From Other Governments					
0142 State Revenue Receivable					
0143 Federal Revenue Receivable					
0145 Other Intergovernmental Revenue Receivable					
0146 Due from Primary Government					
0147 Due from Component Unit					
0150 Other Receivables		31			
0170 Inventories					
0180 Prepaid Expenses (Expenditures)		64,420			
0190 Other Current Assets					
Total Assets		\$15,644,958			
0910 Deferred Outflows of Resources					
Total Assets And Deferred Outflows Of Resources		\$15,644,958			

Amounts Expressed in Whole Dollars

Total Governmental Funds

Assets And Deferred Outflows Of Resources

Assets	
0100 Cash and Cash Equivalents	24,835,345
0110 Investments	14,598,570
0120 Taxes Receivable	1,328,590
0130 Due From Other Funds	5,000,000
0141 Due From Other Governments	1,906,957
0142 State Revenue Receivable	
0143 Federal Revenue Receivable	
0145 Other Intergovernmental Revenue Receivable	
0146 Due from Primary Government	
0147 Due from Component Unit	
0150 Other Receivables	336,812
0170 Inventories	48,684
0180 Prepaid Expenses (Expenditures)	183,389
0190 Other Current Assets	
Total Assets	\$48,238,347
0910 Deferred Outflows of Resources	
Total Assets And Deferred Outflows Of Resources	\$48,238,347

Amounts Expressed in Whole Dollars

<u>General Fund</u> <u>(10)</u>	<u>Student Sponsored</u> <u>Activity Fund</u> <u>(21)</u>	<u>Public Purpose Trust</u> <u>(27)</u>	<u>Other Compt Approved</u> <u>(28)</u>	<u>Athletic / Activity</u> <u>(29)</u>
------------------------------------	---	--	--	---

Liabilities And Deferred Inflows Of Resources And Fund Balances

Liabilities

0400 Due to Other Funds	5,055,094
0411 Due to Other Governments	481,066
0412 Due to Primary Government	
0413 Due to Component Unit	
0420 Accounts Payable	464,151
0430 Contracts Payable	
0440 Current Portion of Long-Term Debt	
0450 Short-Term Payables	
0461 Accrued Salaries and Benefits	6,425,065
0462 Payroll Deductions and Withholding	
0480 Unearned Revenues	196,111
0490 Other Current Liabilities	

Total Liabilities **\$12,621,487**

0950 Deferred Inflows of Resources	443,601
------------------------------------	---------

Fund Balances

0810 Nonspendable Fund Balance	167,653
0820 Restricted Fund Balance	
0830 Committed Fund Balance	13,820,000
0840 Assigned Fund Balance	450,000
0850 Unassigned Fund Balance	5,090,648

Total Fund Balances **\$19,528,301**

Total Liabilities, Deferred Inflows Of Resources And Fund Balances **\$32,593,389**

Amounts Expressed in Whole Dollars

<u>Capital Reserve (690.</u>	<u>Capital Reserve (1431)</u>	<u>Other Capital Projects</u>	<u>Debt Service</u>	<u>Permanent</u>
<u>1850)</u>	<u>(32)</u>	<u>Fund</u>	<u>(40)</u>	<u>(90)</u>
<u>(31)</u>		<u>(39)</u>		

Liabilities And Deferred Inflows Of Resources And Fund Balances

Liabilities

- 0400 Due to Other Funds
- 0411 Due to Other Governments
- 0412 Due to Primary Government
- 0413 Due to Component Unit
- 0420 Accounts Payable 1,340,525
- 0430 Contracts Payable
- 0440 Current Portion of Long-Term Debt
- 0450 Short-Term Payables
- 0461 Accrued Salaries and Benefits
- 0462 Payroll Deductions and Withholding
- 0480 Unearned Revenues
- 0490 Other Current Liabilities

Total Liabilities	\$1,340,525
--------------------------	--------------------

0950 Deferred Inflows of Resources

Fund Balances

- 0810 Nonspendable Fund Balance
- 0820 Restricted Fund Balance
- 0830 Committed Fund Balance
- 0840 Assigned Fund Balance 14,304,433
- 0850 Unassigned Fund Balance

Total Fund Balances	\$14,304,433
----------------------------	---------------------

Total Liabilities, Deferred Inflows Of Resources And Fund Balances	\$15,644,958
---	---------------------

Amounts Expressed in Whole Dollars

Total Governmental Funds

Liabilities And Deferred Inflows Of Resources And Fund Balances

Liabilities

0400 Due to Other Funds	5,055,094
0411 Due to Other Governments	481,066
0412 Due to Primary Government	
0413 Due to Component Unit	
0420 Accounts Payable	1,804,676
0430 Contracts Payable	
0440 Current Portion of Long-Term Debt	
0450 Short-Term Payables	
0461 Accrued Salaries and Benefits	6,425,065
0462 Payroll Deductions and Withholding	
0480 Unearned Revenues	196,111
0490 Other Current Liabilities	

Total Liabilities \$13,962,012

0950 Deferred Inflows of Resources	443,601
------------------------------------	---------

Fund Balances

0810 Nonspendable Fund Balance	167,653
0820 Restricted Fund Balance	
0830 Committed Fund Balance	13,820,000
0840 Assigned Fund Balance	14,754,433
0850 Unassigned Fund Balance	5,090,648

Total Fund Balances \$33,832,734

Total Liabilities, Deferred Inflows Of Resources And Fund Balances \$48,238,347

Amounts Expressed in Whole Dollars	<u>General Fund</u> <u>(10)</u>	<u>Student Sponsored</u> <u>Activity Fund</u> <u>(21)</u>	<u>Public Purpose Trust</u> <u>(27)</u>	<u>Other Compt Approved</u> <u>(28)</u>	<u>Athletic / Activity</u> <u>(29)</u>
Revenues					
6000 Revenue from Local Sources	40,556,464				
7000 Revenue from State Sources	17,194,519				
8000 Revenue from Federal Sources	616,321				
Total Revenues	\$58,367,304				
Expenditures					
1000 Instruction	35,328,126				
2000 Support Services	16,547,840				
3000 Operation of Non-Instructional Services	1,317,202				
4000 Facilities Acquisition, Construction and Improvement Services					
5110 Debt Service	472,675				
5130 Refund of Prior Year Revenues / Receipts	6,236				
Total Expenditures	\$53,672,079				
Excess (Deficiency) Of Revenues Over Expenditures	\$4,695,225				
Other Financing Sources (Uses)					
9110 Face Value of Bonds Issued					
9120 Proceeds from Refunding of Bonds					
9130 Bond Premiums					
9200 Proceeds from Extended-Term Financing	744,315				
9300 Interfund Transfers - IN					
9400 Sale of or Compensation for Loss of Fixed Assets	55,328				
9710 Transfers from Component Units					
9720 Transfers from Primary Governments					
9910 Other Financing Sources Not Listed in the 9000 Series					
9990 Insurance Recoveries	1,610				
5120 Debt Service – Refunded Bonds					
5150 Bond Discounts					
5200 Interfund Transfers – Out	6,202,689				
5300 Transfers Out to Component Units/Primary Governments					
Total Other Financing Sources (Uses)	(\$5,401,436)				

Amounts Expressed in Whole Dollars	<u>Capital Reserve (690.1850)</u> <u>(31)</u>	<u>Capital Reserve (1431)</u> <u>(32)</u>	<u>Other Capital Projects</u> <u>Fund</u> <u>(39)</u>	<u>Debt Service</u> <u>(40)</u>	<u>Permanent</u> <u>(90)</u>
Revenues					
6000 Revenue from Local Sources		147,055			
7000 Revenue from State Sources					
8000 Revenue from Federal Sources					
Total Revenues		\$147,055			
Expenditures					
1000 Instruction					
2000 Support Services		1,109,196		500	
3000 Operation of Non-Instructional Services					
4000 Facilities Acquisition, Construction and Improvement Services		4,888,765			
5110 Debt Service				1,201,715	
5130 Refund of Prior Year Revenues / Receipts					
Total Expenditures		\$5,997,961		\$1,202,215	
Excess (Deficiency) Of Revenues Over Expenditures		(\$5,850,906)		(\$1,202,215)	
Other Financing Sources (Uses)					
9110 Face Value of Bonds Issued					
9120 Proceeds from Refunding of Bonds					
9130 Bond Premiums					
9200 Proceeds from Extended-Term Financing					
9300 Interfund Transfers - IN		5,000,474		1,202,215	
9400 Sale of or Compensation for Loss of Fixed Assets					
9710 Transfers from Component Units					
9720 Transfers from Primary Governments					
9910 Other Financing Sources Not Listed in the 9000 Series					
9990 Insurance Recoveries					
5120 Debt Service – Refunded Bonds					
5150 Bond Discounts					
5200 Interfund Transfers – Out					
5300 Transfers Out to Component Units/Primary Governments					
Total Other Financing Sources (Uses)		\$5,000,474		\$1,202,215	

Amounts Expressed in Whole Dollars	<u>Total Governmental Funds</u>
Revenues	
6000 Revenue from Local Sources	40,703,519
7000 Revenue from State Sources	17,194,519
8000 Revenue from Federal Sources	616,321
Total Revenues	\$58,514,359
Expenditures	
1000 Instruction	35,328,126
2000 Support Services	17,657,536
3000 Operation of Non-Instructional Services	1,317,202
4000 Facilities Acquisition, Construction and Improvement Services	4,888,765
5110 Debt Service	1,674,390
5130 Refund of Prior Year Revenues / Receipts	6,236
Total Expenditures	\$60,872,255
Excess (Deficiency) Of Revenues Over Expenditures	(\$2,357,896)
Other Financing Sources (Uses)	
9110 Face Value of Bonds Issued	
9120 Proceeds from Refunding of Bonds	
9130 Bond Premiums	
9200 Proceeds from Extended-Term Financing	744,315
9300 Interfund Transfers - IN	6,202,689
9400 Sale of or Compensation for Loss of Fixed Assets	55,328
9710 Transfers from Component Units	
9720 Transfers from Primary Governments	
9910 Other Financing Sources Not Listed in the 9000 Series	
9990 Insurance Recoveries	1,610
5120 Debt Service – Refunded Bonds	
5150 Bond Discounts	
5200 Interfund Transfers – Out	6,202,689
5300 Transfers Out to Component Units/Primary Governments	
Total Other Financing Sources (Uses)	\$801,253

Amounts Expressed in Whole Dollars	<u>General Fund</u> <u>(10)</u>	<u>Student Sponsored</u> <u>Activity Fund</u> <u>(21)</u>	<u>Public Purpose Trust</u> <u>(27)</u>	<u>Other Compt Approved</u> <u>(28)</u>	<u>Athletic / Activity</u> <u>(29)</u>
Special And Extraordinary Items					
9920 Special Items – Gains					
9930 Extraordinary Items – Gains					
5520 Special Items – Losses					
5530 Extraordinary Items – Losses					
Net Change In Fund Balances	(\$706,211)				
Fund Balance					
0001 Fund Balance - Beginning of Fiscal Year	20,234,512				
Fund Balance - End Of Year	\$19,528,301				

Amounts Expressed in Whole Dollars	<u>Capital Reserve (690.</u> <u>1850</u> <u>(31)</u>	<u>Capital Reserve (1431</u> <u>(32)</u>	<u>Other Capital Projects</u> <u>Fund</u> <u>(39)</u>	<u>Debt Service</u> <u>(40)</u>	<u>Permanent</u> <u>(90)</u>
Special And Extraordinary Items					
9920 Special Items – Gains					
9930 Extraordinary Items – Gains					
5520 Special Items – Losses					
5530 Extraordinary Items – Losses					
Net Change In Fund Balances		(\$850,432)			
Fund Balance					
0001 Fund Balance - Beginning of Fiscal Year		15,154,865			
Fund Balance - End Of Year		\$14,304,433			

Amounts Expressed in Whole Dollars	<u>Total Governmental Funds</u>
Special And Extraordinary Items	
9920 Special Items – Gains	
9930 Extraordinary Items – Gains	
5520 Special Items – Losses	
5530 Extraordinary Items – Losses	
Net Change In Fund Balances	(\$1,556,643)
Fund Balance	
0001 Fund Balance - Beginning of Fiscal Year	35,389,377
Fund Balance - End Of Year	\$33,832,734

Amounts Expressed in Whole Dollars	<u>Food Service</u> <u>(51)</u>	<u>Child Care</u> <u>Operations</u> <u>(52)</u>	<u>Other Enterprise</u> <u>(58)</u>	<u>TOTAL</u>	<u>Internal Service</u> <u>(60)</u>
Assets And Deferred Outflows Of Resources					
Current Assets					
0100 Cash and Cash Equivalents	248,070			248,070	533,455
0110 Investments	159,668			159,668	
0130 Due From Other Funds	55,094			55,094	
0141 Due From Other Governments	71,648			71,648	
0142 State Revenue Receivable					
0143 Federal Revenue Receivable					
0146 Due from Primary Government					
0147 Due from Component Unit					
0150 Other Receivables	1,207			1,207	
0170 Inventories	115,759			115,759	
0180 Prepaid Expenses (Expenditures)					
0190 Other Current Assets					
Total Current Assets	\$651,446			\$651,446	\$533,455
Noncurrent Assets					
0211 Land					
0212 Site Improvements (Net)					
0220 Buildings and Building Improvements (Net)					
0230 Machinery, Equipment and Furniture (Net)	24,041			24,041	
0250 Construction in Progress					
0260 Long Term Prepayments					
0290 Other Noncurrent Assets					
Total Noncurrent Assets	\$24,041			\$24,041	
0910 Deferred Outflows of Resources	248,000			248,000	
Total Assets And Deferred Outflows Of Resources	\$923,487			\$923,487	\$533,455

Amounts Expressed in Whole Dollars	<u>Food Service</u> <u>(51)</u>	<u>Child Care</u> <u>Operations</u> <u>(52)</u>	<u>Other Enterprise</u> <u>(58)</u>	<u>TOTAL</u>	<u>Internal Service</u> <u>(60)</u>
Liabilities And Deferred Inflows Of Resources And Net Position					
Current Liabilities					
0400 Due to Other Funds					
0411 Due to Other Governments					
0413 Due to Component Unit					
0420 Accounts Payable	11,852			11,852	
0430 Contracts Payable					
0440 Current Portion of Long-Term Debt					
0450 Short-Term Payables					
0461 Accrued Salaries and Benefits					
0462 Payroll Deductions and Withholding					
0480 Unearned Revenues	143,185			143,185	
0490 Other Current Liabilities	20,793			20,793	319,125
Total Current Liabilities	\$175,830			\$175,830	\$319,125
Noncurrent Liabilities					
0510 Bonds Payable					
0520 Extended-Term Financing Agreements Payable					
0530 Lease-Purchase Obligations					
0540 Accumulated Compensated Absences	61,249			61,249	
0550 Authority Lease Obligations					
0560 Other Post-Employment Benefits (OPEB)	135,000			135,000	
0570 Net Pension Liability	1,614,000			1,614,000	
0599 Other Noncurrent Liabilities					
Total Noncurrent Liabilities	\$1,810,249			\$1,810,249	
Total Liabilities	\$1,986,079			\$1,986,079	\$319,125
0950 Deferred Inflows of Resources	85,000			85,000	
Net Position					
0791 Net Investment in Capital Assets	24,041			24,041	
0008 Restricted Net Position (0792 – 0798)					
0799 Unrestricted Net Position	(1,171,633)			(1,171,633)	214,330
Total Net Position	(\$1,147,592)			(\$1,147,592)	\$214,330
Total Liabilities And Deferred Inflows Of Resources And Net Position	\$923,487			\$923,487	\$533,455

Amounts Expressed in Whole Dollars	<u>Food Service</u> <u>(51)</u>	<u>Child Care Operations</u> <u>(52)</u>	<u>Other Enterprise</u> <u>(58)</u>	<u>TOTAL</u>	<u>Internal Service</u> <u>(60)</u>
Operating Revenues					
6600 Food Service Revenue	600,188			600,188	
0071 Charges for Services					7,800,000
0072 Other Operating Revenue					
Total Operating Revenues	\$600,188			\$600,188	\$7,800,000
Operating Expenses					
100 Personnel Services – Salaries	530,907			530,907	
200 Personnel Services – Employee Benefits	349,563			349,563	7,231,639
300 Purchased Professional and Technical Services	1,030			1,030	
400 Purchased Property Services	2,067			2,067	
500 Other Purchased Services	813			813	
600 Supplies	783,114			783,114	
740 Depreciation	4,843			4,843	
810 Dues and Fees					628,197
890 Miscellaneous Expenditures	504			504	
Total Operating Expenses	\$1,672,841			\$1,672,841	\$7,859,836
Operating Income (Loss)	(\$1,072,653)			(\$1,072,653)	(\$59,836)
Non Operating Revenues (Expenses)					
6500 Earnings on Investments	7,375			7,375	5,110
6920 Contributions and Donations from Private Sources					
6930 Gains or Losses on Sale of Fixed Assets					
6991 Refunds of a Prior Year Expenditure					
7000 Revenue from State Sources	153,221			153,221	
8000 Revenue from Federal Sources	915,972			915,972	
9990 Insurance Recoveries					
820 Claims and Judgments Against the LEA					
830 Interest					
TOTAL Non Operating Revenues (Expenses)	\$1,076,568			\$1,076,568	\$5,110
Income (Loss) Before Contributions And Transfers	\$3,915			\$3,915	(\$54,726)

Amounts Expressed in Whole Dollars	<u>Food Service</u> <u>(51)</u>	<u>Child Care Operations</u> <u>(52)</u>	<u>Other Enterprise</u> <u>(58)</u>	<u>TOTAL</u>	<u>Internal Service</u> <u>(60)</u>
Contributions, Transfers, and Special and Extraordinary Items					
5200 Interfund Transfers – Out					
5300 Transfers Out to Component Units/Primary Governments					
5520 Special Items – Losses					
5530 Extraordinary Items – Losses					
9300 Interfund Transfers - IN					
9500 Capital Contributions					
9700 Transfers IN From Component Units/Primary Governments					
9920 Special Items – Gains					
9930 Extraordinary Items – Gains					
Change In Net Position	\$3,915			\$3,915	(\$54,726)
0002 Net Position - Beginning of Fiscal Year	(1,151,507)			(1,151,507)	269,056
0003 Accounting Changes / Residual Equity Transfers					
Net Position - End Of Year	(\$1,147,592)			(\$1,147,592)	\$214,330

Amounts Expressed in Whole Dollars	<u>Food Service</u> <u>(51)</u>	<u>Child Care Operations</u> <u>(52)</u>	<u>Other Enterprise</u> <u>(58)</u>	<u>TOTAL</u>	<u>Internal Service(60)</u>
Cash Flows From Operating Activities					
0011 Cash Receipts From Users	574,385			574,385	
0012 Cash Receipts From Assessments Made to Other Funds					7,800,000
0013 Cash Receipts From Earnings on Investments					
0014 Cash Receipts From Other Operating Revenue					
0015 Cash Payments To Employees For Services	863,933			863,933	
0016 Cash Payments For Insurance Claims					7,874,202
0017 Cash Payments To Suppliers For Goods and Services	726,186			726,186	
0018 Cash Payments For Other Operating Expenses	3,158			3,158	
Net Cash Provided By (Used For) Operating Activities	(\$1,018,892)			(\$1,018,892)	(\$74,202)
Cash Flows From Non-Capital Financing Activities					
0021 Receipts From Local Sources - 6000					
0022 Receipts From State Sources - 7000	149,489			149,489	
0023 Receipts From Federal Sources -8000	726,842			726,842	
0024 Notes and Loans Received (Repaid)					
0025 Interest Paid on Notes/Loans - 5100-830					
0026 Operating Transfers In (Out)/Residual Equity Trans					
0027 Operating Transfers In (Out) Primary Government / Comp Unit					
0028 Receipts From Refund of Prior Year Expenditures - 6991					
0029 Special and Extraordinary Gains (losses)					
0030 Receipts from Insurance Recoveries -9990					
Net Cash Prov By (Used for) Non-Capital Financing Activities	\$876,331			\$876,331	
Cash Flows From Capital and Related Financing Activities					
0031 Payments For Fac Acq, Const, and Imp - 4000	(7,105)			(7,105)	
0032 Gain / (Loss) on Sale of Fixed Assets - 6930					
0033 Proceeds From Extended Term Financing - 9200					
0034 Principal Paid on Financing Agreements					
0035 Interest Paid on Financing Agreements - 5100-830					
0036 (Inc) Dec in Contributed Capital					
Net Cash Prov By (Used for) Capital and Related Financing Activities	(\$7,105)			(\$7,105)	
Cash Flows From Investing Activities					
0041 Earnings on Investments - 6500	7,375			7,375	5,110
0042 Purchase of Inv Securities / Deposits to Inv Pools	(1,991)			(1,991)	
0043 Receipts From Investment Pool Withdrawals					
0044 Proceeds from Sale and Maturity of Inv Securities					

LEA : 113361303 Cocalico SD

Printed 11/12/2020 2:03:12 PM

0045 Loans Received (Paid)

Net Cash Prov By (Used for) Investing Activities	\$5,384	\$5,384	\$5,110
---	----------------	----------------	----------------

	<u>Food Service</u> <u>(51)</u>	<u>Child Care Operations</u> <u>(52)</u>	<u>Other Enterprise</u> <u>(58)</u>	<u>TOTAL</u>	<u>Internal Service</u> <u>(60)</u>
Net Increase (Decrease) in Cash Flows	(144,282)			(144,282)	(69,092)
0004 Cash and Cash Equivalents Beginning of Year	392,352			392,352	602,547
Cash and Cash Equivalents at Year End	\$248,070			\$248,070	\$533,455
Reconciliation of Operating Income (Loss) To Net Cash Provided by (Used For) Operating Activities					
0005 Operating Income (Loss) per REP	(1,072,653)			(1,072,653)	(59,836)
Adjustments					
0051 Depreciation and Net Amortization	4,843			4,843	
0052 Provision for Uncollectible Accounts					
0053 Other Adjustments					
Effect of Changes in Assets, Liabilities, Deferred Outflows and Deferred Inflows					
0054 (Inc) Dec In Accounts Receivable (0120-0150)	(54,938)			(54,938)	
0055 Advances to Other Funds (0160)					
0056 (Inc) Dec in Inventories (0170)	(51,673)			(51,673)	
0057 (Inc) Dec in Prepaid Expenses (0180)					
0058 (Inc) Dec in Other Current or Noncurrent Assets	154,958			154,958	
0064 Deferred Outflows (0910)					
0059 Inc (Dec) in Accounts Payable (0400-0450)	(45,581)			(45,581)	
0060 Inc (Dec) in Accrued Salaries/Benefits (0461)					
0065 Inc (Dec) in Net Pension Liabilities (0570)	19,000			19,000	
0066 Inc (Dec) in Other Postemp Benefit Oblig (0560)	1,000			1,000	
0061 Inc (Dec) in Payroll Deductions/Withholding (0462)					
0062 Inc (Dec) in Unearned Revenue (0480)	29,615			29,615	
0063 Inc (Dec) in Other Current or Noncurrent Liabilities	(3,463)			(3,463)	(14,366)
0067 Deferred Inflows (0950)					
Total Adjustments	\$53,761			\$53,761	(\$14,366)
Cash Provided By (Used for) Total	(\$1,018,892)			(\$1,018,892)	(\$74,202)

COMBINED STATEMENT OF CASH FLOWS
SCHEDULE OF NONCASH INVESTING, CAPITAL, AND FINANCING ACTIVITIES

Explanation of Transaction and Balance Sheet Effect	Amount
Total	

LEA : 113361303 Cocalico SD

Printed 11/12/2020 2:03:17 PM

Amounts Expressed in Whole Dollars

	<u>Private Purpose Trust</u> <u>(71)</u>	<u>Investment Trust</u> <u>(72)</u>	<u>Pension Trust</u> <u>(73)</u>	<u>Student Activity Custodial</u> <u>(81)</u>
Assets And Deferred Outflows Of Resources				
Assets				
0100 Cash and Cash Equivalents	12,133			84,863
0110 Investments	20,758			
0130 Due From Other Funds				
0140 Due from Other Governments, Primary Government and Component Units				
0150 Other Receivables				
0170 Inventories				
0180 Prepaid Expenses (Expenditures)				3,876
0190 Other Current Assets				
0220 Buildings and Building Improvements (Net)				
0230 Machinery, Equipment and Furniture (Net)				
Total Assets	\$32,891			\$88,739
0910 Deferred Outflows of Resources				
Total Assets And Deferred Outflows Of Resources	\$32,891			\$88,739

LEA : 113361303 Cocalico SD

Printed 11/12/2020 2:03:17 PM

Amounts Expressed in Whole Dollars

Other Custodial
(89)

Fiduciary Component Units
(98)

Total Fiduciary Funds

Assets And Deferred Outflows Of Resources

Assets

0100 Cash and Cash Equivalents			96,996
0110 Investments			20,758
0130 Due From Other Funds			
0140 Due from Other Governments, Primary Government and Component Units			
0150 Other Receivables			
0170 Inventories			
0180 Prepaid Expenses (Expenditures)			3,876
0190 Other Current Assets			
0220 Buildings and Building Improvements (Net)			
0230 Machinery, Equipment and Furniture (Net)			

Total Assets **\$121,630**

0910 Deferred Outflows of Resources

Total Assets And Deferred Outflows Of Resources **\$121,630**

LEA : 113361303 Cocalico SD

Printed 11/12/2020 2:03:17 PM

Amounts Expressed in Whole Dollars

Private Purpose Trust
(71)

Investment Trust
(72)

Pension Trust
(73)

Student Activity Custodial
(81)

Liabilities, Deferred Inflows Of Resources And Net Position

Liabilities

0400 Due to Other Funds				
0410 Due to Other Governments, Primary Government and Component Units				86,771
0420 Accounts Payable				1,968
0430 Contracts Payable				
0450 Short-Term Payables				
0460 Payroll Accruals and Withholdings				
0480 Unearned Revenues				
0490 Other Current Liabilities				

Total Liabilities **\$88,739**

0950 Deferred Inflows of Resources

Net Position

0791 Net Investment in Capital Assets				
0009 Restricted Net Position (0792 – 0798)		32,891		
0799 Unrestricted Net Position				

Total Net Position **\$32,891**

Total Liabilities, Deferred Inflows Of Resources And Net Position **\$88,739**

LEA : 113361303 Cocalico SD

Printed 11/12/2020 2:03:17 PM

Amounts Expressed in Whole Dollars	<u>Other Custodial</u> <u>(89)</u>	<u>Fiduciary Component Units</u> <u>(98)</u>	<u>Total Fiduciary Funds</u>
Liabilities, Deferred Inflows Of Resources And Net Position			
Liabilities			
0400 Due to Other Funds			
0410 Due to Other Governments, Primary Government and Component Units			86,771
0420 Accounts Payable			1,968
0430 Contracts Payable			
0450 Short-Term Payables			
0460 Payroll Accruals and Withholdings			
0480 Unearned Revenues			
0490 Other Current Liabilities			
Total Liabilities			\$88,739
0950 Deferred Inflows of Resources			
Net Position			
0791 Net Investment in Capital Assets			
0009 Restricted Net Position (0792 – 0798)			32,891
0799 Unrestricted Net Position			
Total Net Position			\$32,891
Total Liabilities, Deferred Inflows Of Resources And Net Position			\$121,630

Amounts Expressed in Whole Dollars	<u>Private Purpose Trust</u> <u>(71)</u>	<u>Investment Trust</u> <u>(72)</u>	<u>Pension Trust</u> <u>(73)</u>	<u>Student Activity</u> <u>Custodial</u> <u>(81)</u>	<u>Other Custodial</u> <u>(89)</u>	<u>Fiduciary Component</u> <u>Units</u> <u>(98)</u>
Additions						
0091 Gifts and Contributions	2,850					
0095 Net Investment Earnings	183					
0092 Other Additions						
Deductions						
0093 Scholarships Awarded	3,544					
0094 Other Deductions						
Change In Net Position	(\$511)					
0006 Net Position – Beginning of Fiscal Year	33,402					
0007 Net Position Held in Trust for Pension Benefits						
Net Position - End of Fiscal Year	\$32,891					

Amounts Expressed in Whole Dollars	<u>Total Fiduciary Funds</u>
Additions	
0091 Gifts and Contributions	2,850
0095 Net Investment Earnings	183
0092 Other Additions	
Deductions	
0093 Scholarships Awarded	3,544
0094 Other Deductions	
Change In Net Position	(\$511)
0006 Net Position – Beginning of Fiscal Year	33,402
0007 Net Position Held in Trust for Pension Benefits	
Net Position - End of Fiscal Year	\$32,891

	<u>Revenue Reported In Current Year</u>	<u>Current Year Tax Accrual</u>	<u>Prior Year Tax Accrual</u>	<u>Taxes Collected In Current Year</u>
<u>Revenue from Local Sources</u>				
6111 Current Real Estate Taxes	34,158,390.80			34,158,390.80
6112 Interim Real Estate Taxes	302,666.22			302,666.22
6113 Public Utility Realty Taxes	33,993.55			33,993.55
6114 Payments in Lieu of Current Taxes - State / Local	478.49			478.49
6151 Current Act 511 Earned Income Taxes	3,401,285.29			3,401,285.29
6153 Current Act 511 Real Estate Transfer Taxes	576,251.62			576,251.62
6411 Delinquent Real Estate Taxes	490,273.70			490,273.70
6420 Delinquent Per Capita Taxes, Section 679	16.50			16.50
6500 Earnings on Investments	538,302.41			
6700 Revenues from LEA Activities	70,724.46			
6810 Revenue from Local Governmental Units	47,029.35			
6821 State Revenue Received from Other Pennsylvania Public LEAs	134,453.33			
6831 Federal Revenue Received from Other Pennsylvania Public LEAs	48,453.10			
6832 Federal IDEA Revenue Received as Pass Through	672,831.00			
6910 Rentals	20,821.51			
6920 Contributions and Donations from Private Sources	88.39			
6942 Summer School Tuition	7,600.00			
6991 Refunds of a Prior Year Expenditure	17,615.51			
6999 Other Revenues Not Specified Above	35,188.32			
TOTAL Revenue from Local Sources	\$40,556,463.55			\$38,963,356.17

**Revenue Reported
In Current Year**

Revenue from State Sources

7111 Basic Education Funding-Formula	7,648,210.98		
7112 Basic Education Funding-Social Security	579,321.71		
7160 Tuition for Orphans Subsidy	13,927.62		
7271 Special Education funds for School-Aged Pupils	1,870,754.43		
7311 Pupil Transportation Subsidy	1,158,919.24		
7312 Nonpublic and Charter School Pupil Transportation Subsidy	96,250.00		
7320 Rental and Sinking Fund Payments / Building Reimbursement Subsidy	68,222.67		
7330 Health Services (Medical, Dental, Nurse, Act 25)	53,545.26		
7340 State Property Tax Reduction Allocation	1,107,393.80		
7350 Sewage Treatment Operations / Environmental Subsidies	400,960.00		
7506 PAsmart Grants	3,655.00		
7599 Other State Revenue Not Listed Elsewhere in the 7000 Series	30,000.00		
7820 State Share of Retirement Contributions	4,163,358.06		
TOTAL Revenue from State Sources	\$17,194,518.77		

**Revenue Reported
In Current Year**

Revenue from Federal Sources

8514 NCLB, Title I - Improving the Academic Achievement of the Disadvantaged	408,890.40		
8515 NCLB, Title II - Preparing, Training and Recruiting High Quality Teachers and Principals	89,640.74		
8516 NCLB, Title III - Language Instruction for Limited English Proficient and Immigrant Students	13,710.62		
8517 NCLB, Title IV - 21St Century Schools	34,314.00		
8749 Other CARES Act Funding	10,748.00		
8810 School-Based Access Medicaid Reimbursement Program (SBAP) Reimbursements (Access)	45,401.60		
8820 Medical Assistance Reimbursement for Administrative Claiming (Quarterly) Program	13,615.77		
TOTAL Revenue from Federal Sources	\$616,321.13		

**Revenue Reported
In Current Year**

Other Financing Sources

9290 Other Extended-Term Financing Proceeds	744,315.00			
9400 Sale of or Compensation for Loss of Fixed Assets	55,328.00			
9990 Insurance Recoveries	1,610.00			
TOTAL Other Financing Sources	\$801,253.00			
TOTAL FROM ALL SOURCES	\$59,168,556.45			\$38,963,356.17

LEA : 113361303 Cocalico SD

Printed 11/12/2020 2:03:39 PM

	<u>General Fund (10)</u>	<u>Student Sponsored Activity Fund (21)</u>	<u>Public Purpose Trust (27)</u>	<u>Other Compt Approved (28)</u>	<u>Athletic / Activity (29)</u>	<u>Capital Reserve (690, 1850) (31)</u>
6000 Revenue from Local Sources						
6111 Current Real Estate Taxes	34,158,390.80					
6112 Interim Real Estate Taxes	302,666.22					
6113 Public Utility Realty Taxes	33,993.55					
6114 Payments in Lieu of Current Taxes - State / Local	478.49					
6151 Current Act 511 Earned Income Taxes	3,401,285.29					
6153 Current Act 511 Real Estate Transfer Taxes	576,251.62					
6411 Delinquent Real Estate Taxes	490,273.70					
6420 Delinquent Per Capita Taxes, Section 679	16.50					
6500 Earnings on Investments	538,302.41					
6700 Revenues from LEA Activities	70,724.46					
6810 Revenue from Local Governmental Units	47,029.35					
6821 State Revenue Received from Other Pennsylvania Public LEAs	134,453.33					
6831 Federal Revenue Received from Other Pennsylvania Public LEAs	48,453.10					
6832 Federal IDEA Revenue Received as Pass Through	672,831.00					
6910 Rentals	20,821.51					
6920 Contributions and Donations from Private Sources	88.39					
6942 Summer School Tuition	7,600.00					
6991 Refunds of a Prior Year Expenditure	17,615.51					
6999 Other Revenues Not Specified Above	35,188.32					
6000 Total Revenue from Local Sources	\$40,556,463.55					
7000 Revenue from State Sources						
7111 Basic Education Funding-Formula	7,648,210.98					
7112 Basic Education Funding-Social Security	579,321.71					
7160 Tuition for Orphans Subsidy	13,927.62					
7271 Special Education funds for School-Aged Pupils	1,870,754.43					
7311 Pupil Transportation Subsidy	1,158,919.24					
7312 Nonpublic and Charter School Pupil Transportation Subsidy	96,250.00					
7320 Rental and Sinking Fund Payments / Building Reimbursement Subsidy	68,222.67					
7330 Health Services (Medical, Dental, Nurse, Act 25)	53,545.26					
7340 State Property Tax Reduction Allocation	1,107,393.80					
7350 Sewage Treatment Operations / Environmental Subsidies	400,960.00					
7506 PAsmart Grants	3,655.00					
7599 Other State Revenue Not Listed Elsewhere in the 7000 Series	30,000.00					
7820 State Share of Retirement Contributions	4,163,358.06					
7000 Total Revenue from State Sources	\$17,194,518.77					

LEA : 113361303 Cocalico SD

Printed 11/12/2020 2:03:39 PM

	<u>Capital Reserve</u> <u>(1431) (32)</u>	<u>Other Capital</u> <u>Projects Fund (39)</u>	<u>Debt Service (40)</u>	<u>Permanent (90)</u>	<u>Total</u>
6000 Revenue from Local Sources					
6111 Current Real Estate Taxes					34,158,390.80
6112 Interim Real Estate Taxes					302,666.22
6113 Public Utility Realty Taxes					33,993.55
6114 Payments in Lieu of Current Taxes - State / Local					478.49
6151 Current Act 511 Earned Income Taxes					3,401,285.29
6153 Current Act 511 Real Estate Transfer Taxes					576,251.62
6411 Delinquent Real Estate Taxes					490,273.70
6420 Delinquent Per Capita Taxes, Section 679					16.50
6500 Earnings on Investments	147,055.24				685,357.65
6700 Revenues from LEA Activities					70,724.46
6810 Revenue from Local Governmental Units					47,029.35
6821 State Revenue Received from Other Pennsylvania Public LEAs					134,453.33
6831 Federal Revenue Received from Other Pennsylvania Public LEAs					48,453.10
6832 Federal IDEA Revenue Received as Pass Through					672,831.00
6910 Rentals					20,821.51
6920 Contributions and Donations from Private Sources					88.39
6942 Summer School Tuition					7,600.00
6991 Refunds of a Prior Year Expenditure					17,615.51
6999 Other Revenues Not Specified Above					35,188.32
6000 Total Revenue from Local Sources	\$147,055.24				\$40,703,518.79
7000 Revenue from State Sources					
7111 Basic Education Funding-Formula					7,648,210.98
7112 Basic Education Funding-Social Security					579,321.71
7160 Tuition for Orphans Subsidy					13,927.62
7271 Special Education funds for School-Aged Pupils					1,870,754.43
7311 Pupil Transportation Subsidy					1,158,919.24
7312 Nonpublic and Charter School Pupil Transportation Subsidy					96,250.00
7320 Rental and Sinking Fund Payments / Building Reimbursement Subsidy					68,222.67
7330 Health Services (Medical, Dental, Nurse, Act 25)					53,545.26
7340 State Property Tax Reduction Allocation					1,107,393.80
7350 Sewage Treatment Operations / Environmental Subsidies					400,960.00
7506 PAsmart Grants					3,655.00
7599 Other State Revenue Not Listed Elsewhere in the 7000 Series					30,000.00
7820 State Share of Retirement Contributions					4,163,358.06
7000 Total Revenue from State Sources					\$17,194,518.77

	<u>General Fund (10)</u>	<u>Student Sponsored Activity Fund (21)</u>	<u>Public Purpose Trust (27)</u>	<u>Other Compt Approved (28)</u>	<u>Athletic / Activity (29)</u>	<u>Capital Reserve (690.1850) (31)</u>
8000 Revenue from Federal Sources						
8514 NCLB, Title I - Improving the Academic Achievement of the Disadvantaged	408,890.40					
8515 NCLB, Title II - Preparing, Training and Recruiting High Quality Teachers and Principals	89,640.74					
8516 NCLB, Title III - Language Instruction for Limited English Proficient and Immigrant Students	13,710.62					
8517 NCLB, Title IV - 21st Century Schools	34,314.00					
8749 Other CARES Act Funding	10,748.00					
8810 School-Based Access Medicaid Reimbursement Program (SBAP) Reimbursements (Access)	45,401.60					
8820 Medical Assistance Reimbursement for Administrative Claiming (Quarterly) Program	13,615.77					
8000 Total Revenue from Federal Sources	\$616,321.13					
9000 Other Financing Sources						
9290 Other Extended-Term Financing Proceeds	744,315.00					
9310 General Fund Transfers						
9400 Sale of or Compensation for Loss of Fixed Assets	55,328.00					
9990 Insurance Recoveries	1,610.00					
9000 Total Other Financing Sources	\$801,253.00					
Total From All Sources	\$59,168,556.45					

	<u>Capital Reserve</u> <u>(1431) (32)</u>	<u>Other Capital</u> <u>Projects Fund (39)</u>	<u>Debt Service (40)</u>	<u>Permanent (90)</u>	<u>Total</u>
8000 Revenue from Federal Sources					
8514 NCLB, Title I - Improving the Academic Achievement of the Disadvantaged					408,890.40
8515 NCLB, Title II - Preparing, Training and Recruiting High Quality Teachers and Principals					89,640.74
8516 NCLB, Title III - Language Instruction for Limited English Proficient and Immigrant Students					13,710.62
8517 NCLB, Title IV - 21st Century Schools					34,314.00
8749 Other CARES Act Funding					10,748.00
8810 School-Based Access Medicaid Reimbursement Program (SBAP) Reimbursements (Access)					45,401.60
8820 Medical Assistance Reimbursement for Administrative Claiming (Quarterly) Program					13,615.77
8000 Total Revenue from Federal Sources					\$616,321.13
9000 Other Financing Sources					
9290 Other Extended-Term Financing Proceeds					744,315.00
9310 General Fund Transfers	5,000,474.46		1,202,214.98		6,202,689.44
9400 Sale of or Compensation for Loss of Fixed Assets					55,328.00
9990 Insurance Recoveries					1,610.00
9000 Total Other Financing Sources	\$5,000,474.46		\$1,202,214.98		\$7,003,942.44
Total From All Sources	\$5,147,529.70		\$1,202,214.98		\$65,518,301.13

	<u>General Fund (10)</u>	<u>Student Sponsored Activity Fund (21)</u>	<u>Public Purpose Trust (27)</u>	<u>Other Compt Approved (28)</u>	<u>Athletic / Activity (29)</u>	<u>Capital Reserve (690. 1850) (31)</u>
Revenue from Local Sources	40,556,463.55					
Revenue from State Sources	17,194,518.77					
Revenue from Federal Sources	616,321.13					
Other Financing Sources	801,253.00					
Total From All Sources	\$59,168,556.45					

	<u>Capital Reserve (1431)</u> <u>(32)</u>	<u>Other Capital Projects</u> <u>Fund (39)</u>	<u>Debt Service (40)</u>	<u>Permanent (90)</u>	<u>Total</u>
Revenue from Local Sources	147,055.24				40,703,518.79
Revenue from State Sources					17,194,518.77
Revenue from Federal Sources					616,321.13
Other Financing Sources	5,000,474.46		1,202,214.98		7,003,942.44
Total From All Sources	\$5,147,529.70		\$1,202,214.98		\$65,518,301.13

General Fund (10)

	<u>Total</u>
1000 Instruction	
100 Personnel Services – Salaries	
100 Personnel Services – Salaries	16,950,352.07
Total Personnel Services – Salaries	\$16,950,352.07
200 Personnel Services – Employee Benefits	
210 Group Insurance – Contracted Provider	26,044.20
220 Social Security Contributions	1,247,610.74
230 PSERS Retirement Contributions	5,833,921.64
250 Unemployment Compensation	16,492.31
260 Workers' Compensation	112,310.65
270 Group Insurance – Self-Insurance	3,186,935.55
291 Other Retirement Plans	47,310.00
Total Personnel Services – Employee Benefits	\$10,470,625.09
300 Purchased Professional and Technical Services	
322 Professional Educational Services – Ius	2,710,637.32
329 Professional Educational Services – Other	429,811.74
330 Other Professional Services	2,209.54
340 Technical Services	4,725.00
Total Purchased Professional and Technical Services	\$3,147,383.60
400 Purchased Property Services	
430 Repairs and Maintenance Services	127,894.96
440 Rentals	63,317.73
Total Purchased Property Services	\$191,212.69
500 Other Purchased Services	
510 Student Transportation Services	26,019.33
561 Tuition To Other School Districts Within the State	348,015.81
562 Tuition To Pennsylvania Charter Schools	836,219.44
563 Tuition To Nonpublic Schools	400,300.00
564 Tuition To Career and Technology Centers	1,057,044.95
568 Tuition To Private Residential Rehabilitative Institutions (PRRI) [In-State] and Detention Centers	187,163.19
569 Tuition – Other	33,689.43
580 Travel	1,743.50
594 IU Payment By Withholding for Institutionalized Children's Programs – Special Classes	2,747.74
Total Other Purchased Services	\$2,892,943.39
600 Supplies	
610 General Supplies	521,877.23
630 Food	177.20
640 Books and Periodicals	34,891.21
650 Supplies & Fees – Technology Related	212,710.87
Total Supplies	\$769,656.51
700 Property	
752 Capital Equipment – Original and Additional	117,060.13
756 Capitalized Technology Equipment – Original	744,315.00
762 Capitalized Equipment - Replacement	14,243.70

General Fund (10)

1000 Instruction	<u>Total</u>
700 <u>Property</u>	
766 Capitalized Technology Equipment – Replacement	20,817.25
Total Property	\$896,436.08
800 <u>Other Objects</u>	
810 Dues and Fees	8,607.00
890 Miscellaneous Expenditures	910.00
Total Other Objects	\$9,517.00
Total 1000 Instruction	\$35,328,126.43

General Fund (10)

1100 Regular Programs – Elementary / Secondary

	<u>Elementary</u>	<u>Secondary</u>	<u>Federal</u>	<u>Total</u>
100 Personnel Services – Salaries				
100 Personnel Services – Salaries	5,646,554.23	7,869,057.22	280,162.39	13,795,773.84
Total Personnel Services – Salaries	\$5,646,554.23	\$7,869,057.22	\$280,162.39	\$13,795,773.84
200 Personnel Services – Employee Benefits				
210 Group Insurance – Contracted Provider	8,903.94	12,482.40	422.16	21,808.50
220 Social Security Contributions	415,555.53	577,615.00	20,332.21	1,013,502.74
230 PSERS Retirement Contributions	1,997,279.57	2,712,403.36	48,033.96	4,757,716.89
250 Unemployment Compensation	178.88			178.88
260 Workers' Compensation	37,654.22	51,299.51	1,798.89	90,752.62
270 Group Insurance – Self-Insurance	1,038,253.78	1,529,221.49	80,418.62	2,647,893.89
291 Other Retirement Plans		47,310.00		47,310.00
Total Personnel Services – Employee Benefits	\$3,497,825.92	\$4,930,331.76	\$151,005.84	\$8,579,163.52
300 Purchased Professional and Technical Services				
322 Professional Educational Services – Ius			7,890.00	7,890.00
329 Professional Educational Services – Other	179,346.31	150,947.73	22,382.89	352,676.93
330 Other Professional Services		1,250.00	959.54	2,209.54
Total Purchased Professional and Technical Services	\$179,346.31	\$152,197.73	\$31,232.43	\$362,776.47
400 Purchased Property Services				
430 Repairs and Maintenance Services	52,614.74	75,280.22		127,894.96
Total Purchased Property Services	\$52,614.74	\$75,280.22		\$127,894.96
500 Other Purchased Services				
510 Student Transportation Services	1,284.27	19,790.24		21,074.51
561 Tuition To Other School Districts Within the State		7,670.52		7,670.52
562 Tuition To Pennsylvania Charter Schools	200,459.50	397,012.16		597,471.66
568 Tuition To Private Residential Rehabilitative Institutions (PRRI) [In-State] and Detention Centers		1,241.99		1,241.99
569 Tuition – Other		18,588.50		18,588.50
580 Travel	532.66	845.86		1,378.52
Total Other Purchased Services	\$202,276.43	\$445,149.27		\$647,425.70
600 Supplies				
610 General Supplies	176,750.20	298,559.76	25,004.18	500,314.14
640 Books and Periodicals	11,089.83	9,436.18	6,980.42	27,506.43
650 Supplies & Fees – Technology Related	72,761.94	92,080.48	1,652.00	166,494.42
Total Supplies	\$260,601.97	\$400,076.42	\$33,636.60	\$694,314.99
700 Property				
752 Capital Equipment – Original and Additional	15,090.09	101,970.04		117,060.13
756 Capitalized Technology Equipment – Original	343,033.00	401,282.00		744,315.00
762 Capitalized Equipment - Replacement		14,243.70		14,243.70
766 Capitalized Technology Equipment – Replacement		20,817.25		20,817.25
Total Property	\$358,123.09	\$538,312.99		\$896,436.08
800 Other Objects				
810 Dues and Fees	610.00	4,837.00		5,447.00

LEA : 113361303 Cocalico SD

Printed 11/12/2020 2:03:48 PM

General Fund (10)

1100 Regular Programs – Elementary / Secondary

	<u>Elementary</u>	<u>Secondary</u>	<u>Federal</u>	<u>Total</u>
Total Other Objects	\$610.00	\$4,837.00		\$5,447.00
Total 1100 Regular Programs – Elementary / Secondary	\$10,197,952.69	\$14,415,242.61	\$496,037.26	\$25,109,232.56

General Fund (10)

1110 Regular Programs

	<u>Elementary</u>	<u>Secondary</u>	<u>Federal</u>	<u>Total</u>
100 Personnel Services – Salaries				
100 Personnel Services – Salaries	5,646,554.23	7,869,057.22	53,217.49	13,568,828.94
Total Personnel Services – Salaries	\$5,646,554.23	\$7,869,057.22	\$53,217.49	\$13,568,828.94
200 Personnel Services – Employee Benefits				
210 Group Insurance – Contracted Provider	8,903.94	12,482.40	105.00	21,491.34
220 Social Security Contributions	415,555.53	577,615.00	3,864.35	997,034.88
230 PSERS Retirement Contributions	1,997,279.57	2,712,403.36	9,124.21	4,718,807.14
250 Unemployment Compensation	178.88			178.88
260 Workers' Compensation	37,654.22	51,299.51	341.70	89,295.43
270 Group Insurance – Self-Insurance	1,038,253.78	1,529,221.49	17,766.90	2,585,242.17
291 Other Retirement Plans		47,310.00		47,310.00
Total Personnel Services – Employee Benefits	\$3,497,825.92	\$4,930,331.76	\$31,202.16	\$8,459,359.84
300 Purchased Professional and Technical Services				
329 Professional Educational Services – Other	179,346.31	150,947.73	22,382.89	352,676.93
330 Other Professional Services		1,250.00	959.54	2,209.54
Total Purchased Professional and Technical Services	\$179,346.31	\$152,197.73	\$23,342.43	\$354,886.47
400 Purchased Property Services				
430 Repairs and Maintenance Services	52,614.74	75,280.22		127,894.96
Total Purchased Property Services	\$52,614.74	\$75,280.22		\$127,894.96
500 Other Purchased Services				
510 Student Transportation Services	1,284.27	19,790.24		21,074.51
561 Tuition To Other School Districts Within the State		7,670.52		7,670.52
562 Tuition To Pennsylvania Charter Schools	200,459.50	397,012.16		597,471.66
568 Tuition To Private Residential Rehabilitative Institutions (PRRI) [In-State] and Detention Centers		1,241.99		1,241.99
569 Tuition – Other		18,588.50		18,588.50
580 Travel	532.66	845.86		1,378.52
Total Other Purchased Services	\$202,276.43	\$445,149.27		\$647,425.70
600 Supplies				
610 General Supplies	176,750.20	298,559.76	3,788.87	479,098.83
640 Books and Periodicals	11,089.83	9,436.18	1,726.32	22,252.33
650 Supplies & Fees – Technology Related	72,761.94	92,080.48	1,652.00	166,494.42
Total Supplies	\$260,601.97	\$400,076.42	\$7,167.19	\$667,845.58
700 Property				
752 Capital Equipment – Original and Additional	15,090.09	101,970.04		117,060.13
756 Capitalized Technology Equipment – Original	343,033.00	401,282.00		744,315.00
762 Capitalized Equipment - Replacement		14,243.70		14,243.70
766 Capitalized Technology Equipment – Replacement		20,817.25		20,817.25
Total Property	\$358,123.09	\$538,312.99		\$896,436.08
800 Other Objects				
810 Dues and Fees	610.00	4,837.00		5,447.00
Total Other Objects	\$610.00	\$4,837.00		\$5,447.00
Total 1110 Regular Programs	\$10,197,952.69	\$14,415,242.61	\$114,929.27	\$24,728,124.57

General Fund (10)

1190 Federally-Funded Regular Programs

	<u>Elementary</u>	<u>Secondary</u>	<u>Federal</u>	<u>Total</u>
100 Personnel Services – Salaries				
100 Personnel Services – Salaries			226,944.90	226,944.90
Total Personnel Services – Salaries			\$226,944.90	\$226,944.90
200 Personnel Services – Employee Benefits				
210 Group Insurance – Contracted Provider			317.16	317.16
220 Social Security Contributions			16,467.86	16,467.86
230 PSERS Retirement Contributions			38,909.75	38,909.75
260 Workers' Compensation			1,457.19	1,457.19
270 Group Insurance – Self-Insurance			62,651.72	62,651.72
Total Personnel Services – Employee Benefits			\$119,803.68	\$119,803.68
300 Purchased Professional and Technical Services				
322 Professional Educational Services – lus			7,890.00	7,890.00
Total Purchased Professional and Technical Services			\$7,890.00	\$7,890.00
600 Supplies				
610 General Supplies			21,215.31	21,215.31
640 Books and Periodicals			5,254.10	5,254.10
Total Supplies			\$26,469.41	\$26,469.41
Total 1190 Federally-Funded Regular Programs			\$381,107.99	\$381,107.99

General Fund (10)

1200 Special Programs – Elementary / Secondary

	<u>Elementary</u>	<u>Secondary</u>	<u>Federal</u>	<u>Total</u>
100 Personnel Services – Salaries				
100 Personnel Services – Salaries	1,182,637.74	1,921,467.49		3,104,105.23
Total Personnel Services – Salaries	\$1,182,637.74	\$1,921,467.49		\$3,104,105.23
200 Personnel Services – Employee Benefits				
210 Group Insurance – Contracted Provider	1,606.50	2,629.20		4,235.70
220 Social Security Contributions	87,187.70	143,151.62		230,339.32
230 PSERS Retirement Contributions	405,526.06	654,204.61		1,059,730.67
250 Unemployment Compensation	5,767.70	10,545.73		16,313.43
260 Workers' Compensation	8,027.87	13,206.08		21,233.95
270 Group Insurance – Self-Insurance	202,140.64	336,901.02		539,041.66
Total Personnel Services – Employee Benefits	\$710,256.47	\$1,160,638.26		\$1,870,894.73
300 Purchased Professional and Technical Services				
322 Professional Educational Services – Ius	797,428.88	1,232,487.44	672,831.00	2,702,747.32
329 Professional Educational Services – Other	30,208.20	29,136.66		59,344.86
340 Technical Services	2,362.50	2,362.50		4,725.00
Total Purchased Professional and Technical Services	\$829,999.58	\$1,263,986.60	\$672,831.00	\$2,766,817.18
500 Other Purchased Services				
510 Student Transportation Services	180.00	4,764.82		4,944.82
561 Tuition To Other School Districts Within the State	170,172.65	170,172.64		340,345.29
562 Tuition To Pennsylvania Charter Schools	65,292.08	173,455.70		238,747.78
563 Tuition To Nonpublic Schools	246,130.10	154,169.90		400,300.00
568 Tuition To Private Residential Rehabilitative Institutions (PRRI) [In-State] and Detention Centers	30,900.64	54,783.43		85,684.07
569 Tuition – Other		15,100.93		15,100.93
580 Travel	266.48	98.50		364.98
594 IU Payment By Withholding for Institutionalized Children's Programs – Special Classes	1,373.87	1,373.87		2,747.74
Total Other Purchased Services	\$514,315.82	\$573,919.79		\$1,088,235.61
600 Supplies				
610 General Supplies	8,449.52	12,477.32		20,926.84
630 Food		177.20		177.20
640 Books and Periodicals	4,795.11	2,589.67		7,384.78
650 Supplies & Fees – Technology Related	20,608.64	25,607.81		46,216.45
Total Supplies	\$33,853.27	\$40,852.00		\$74,705.27
800 Other Objects				
810 Dues and Fees	1,580.00	1,580.00		3,160.00
890 Miscellaneous Expenditures	355.00	555.00		910.00
Total Other Objects	\$1,935.00	\$2,135.00		\$4,070.00
Total 1200 Special Programs – Elementary / Secondary	\$3,272,997.88	\$4,962,999.14	\$672,831.00	\$8,908,828.02

General Fund (10)

1240 Academic Support

	<u>Elementary</u>	<u>Secondary</u>	<u>Federal</u>	<u>Total</u>
100 Personnel Services – Salaries				
100 Personnel Services – Salaries	1,182,637.74	1,921,467.49		3,104,105.23
Total Personnel Services – Salaries	\$1,182,637.74	\$1,921,467.49		\$3,104,105.23
200 Personnel Services – Employee Benefits				
210 Group Insurance – Contracted Provider	1,606.50	2,629.20		4,235.70
220 Social Security Contributions	87,187.70	143,151.62		230,339.32
230 PSERS Retirement Contributions	405,526.06	654,204.61		1,059,730.67
250 Unemployment Compensation	5,767.70	10,545.73		16,313.43
260 Workers' Compensation	8,027.87	13,206.08		21,233.95
270 Group Insurance – Self-Insurance	202,140.64	336,901.02		539,041.66
Total Personnel Services – Employee Benefits	\$710,256.47	\$1,160,638.26		\$1,870,894.73
300 Purchased Professional and Technical Services				
322 Professional Educational Services – Ius	797,428.88	1,232,487.44	672,831.00	2,702,747.32
329 Professional Educational Services – Other	30,208.20	29,136.66		59,344.86
340 Technical Services	2,362.50	2,362.50		4,725.00
Total Purchased Professional and Technical Services	\$829,999.58	\$1,263,986.60	\$672,831.00	\$2,766,817.18
500 Other Purchased Services				
510 Student Transportation Services	180.00	4,764.82		4,944.82
561 Tuition To Other School Districts Within the State	170,172.65	170,172.64		340,345.29
562 Tuition To Pennsylvania Charter Schools	65,292.08	173,455.70		238,747.78
580 Travel	266.48	98.50		364.98
Total Other Purchased Services	\$235,911.21	\$348,491.66		\$584,402.87
600 Supplies				
610 General Supplies	8,449.52	12,477.32		20,926.84
630 Food		177.20		177.20
640 Books and Periodicals	4,795.11	2,589.67		7,384.78
650 Supplies & Fees – Technology Related	20,608.64	25,607.81		46,216.45
Total Supplies	\$33,853.27	\$40,852.00		\$74,705.27
800 Other Objects				
810 Dues and Fees	1,580.00	1,580.00		3,160.00
890 Miscellaneous Expenditures	355.00	555.00		910.00
Total Other Objects	\$1,935.00	\$2,135.00		\$4,070.00
Total 1240 Academic Support	\$2,994,593.27	\$4,737,571.01	\$672,831.00	\$8,404,995.28

General Fund (10)

1241 Learning Support – Public

	<u>Elementary</u>	<u>Secondary</u>	<u>Federal</u>	<u>Total</u>
100 Personnel Services – Salaries				
100 Personnel Services – Salaries	1,141,992.74	1,921,467.49		3,063,460.23
Total Personnel Services – Salaries	\$1,141,992.74	\$1,921,467.49		\$3,063,460.23
200 Personnel Services – Employee Benefits				
210 Group Insurance – Contracted Provider	1,543.50	2,629.20		4,172.70
220 Social Security Contributions	84,082.43	143,151.62		227,234.05
230 PSERS Retirement Contributions	391,588.79	654,204.61		1,045,793.40
250 Unemployment Compensation	5,767.70	10,545.73		16,313.43
260 Workers' Compensation	7,766.89	13,206.08		20,972.97
270 Group Insurance – Self-Insurance	194,653.93	336,901.02		531,554.95
Total Personnel Services – Employee Benefits	\$685,403.24	\$1,160,638.26		\$1,846,041.50
300 Purchased Professional and Technical Services				
322 Professional Educational Services – Ius	797,428.88	1,232,487.44	672,831.00	2,702,747.32
329 Professional Educational Services – Other	30,208.20	29,136.66		59,344.86
340 Technical Services	2,362.50	2,362.50		4,725.00
Total Purchased Professional and Technical Services	\$829,999.58	\$1,263,986.60	\$672,831.00	\$2,766,817.18
500 Other Purchased Services				
510 Student Transportation Services		1,995.80		1,995.80
561 Tuition To Other School Districts Within the State	170,172.65	170,172.64		340,345.29
562 Tuition To Pennsylvania Charter Schools	65,292.08	173,455.70		238,747.78
580 Travel	98.89	98.50		197.39
Total Other Purchased Services	\$235,563.62	\$345,722.64		\$581,286.26
600 Supplies				
610 General Supplies	8,352.24	12,117.07		20,469.31
640 Books and Periodicals	4,795.11	2,516.09		7,311.20
650 Supplies & Fees – Technology Related	20,608.64	25,607.81		46,216.45
Total Supplies	\$33,755.99	\$40,240.97		\$73,996.96
800 Other Objects				
810 Dues and Fees	75.00	75.00		150.00
Total Other Objects	\$75.00	\$75.00		\$150.00
Total 1241 Learning Support – Public	\$2,926,790.17	\$4,732,130.96	\$672,831.00	\$8,331,752.13

General Fund (10)

1243 Gifted Support

	<u>Elementary</u>	<u>Secondary</u>	<u>Federal</u>	<u>Total</u>
100 Personnel Services – Salaries				
100 Personnel Services – Salaries	40,645.00			40,645.00
Total Personnel Services – Salaries	\$40,645.00			\$40,645.00
200 Personnel Services – Employee Benefits				
210 Group Insurance – Contracted Provider	63.00			63.00
220 Social Security Contributions	3,105.27			3,105.27
230 PSERS Retirement Contributions	13,937.27			13,937.27
260 Workers' Compensation	260.98			260.98
270 Group Insurance – Self-Insurance	7,486.71			7,486.71
Total Personnel Services – Employee Benefits	\$24,853.23			\$24,853.23
500 Other Purchased Services				
510 Student Transportation Services	180.00	2,769.02		2,949.02
580 Travel	167.59			167.59
Total Other Purchased Services	\$347.59	\$2,769.02		\$3,116.61
600 Supplies				
610 General Supplies	97.28	360.25		457.53
630 Food		177.20		177.20
640 Books and Periodicals		73.58		73.58
Total Supplies	\$97.28	\$611.03		\$708.31
800 Other Objects				
810 Dues and Fees	1,505.00	1,505.00		3,010.00
890 Miscellaneous Expenditures	355.00	555.00		910.00
Total Other Objects	\$1,860.00	\$2,060.00		\$3,920.00
Total 1243 Gifted Support	\$67,803.10	\$5,440.05		\$73,243.15

General Fund (10)

	<u>Elementary</u>	<u>Secondary</u>	<u>Federal</u>	<u>Total</u>
1290 Special Programs - Other Support				
500 Other Purchased Services				
563 Tuition To Nonpublic Schools	246,130.10	154,169.90		400,300.00
568 Tuition To Private Residential Rehabilitative Institutions (PRRI) [In-State] and Detention Centers	30,900.64	54,783.43		85,684.07
569 Tuition – Other		15,100.93		15,100.93
594 IU Payment By Withholding for Institutionalized Children’s Programs – Special Classes	1,373.87	1,373.87		2,747.74
Total Other Purchased Services	\$278,404.61	\$225,428.13		\$503,832.74
Total 1290 Special Programs - Other Support	\$278,404.61	\$225,428.13		\$503,832.74

General Fund (10)

1300 Vocational Education

400 Purchased Property Services

440 Rentals

Elementary

Secondary

Federal

Total

63,317.73

63,317.73

Total Purchased Property Services

\$63,317.73

\$63,317.73

500 Other Purchased Services

564 Tuition To Career and Technology Centers

1,057,044.95

1,057,044.95

Total Other Purchased Services

\$1,057,044.95

\$1,057,044.95

Total 1300 Vocational Education

\$1,120,362.68

\$1,120,362.68

General Fund (10)

	<u>Elementary</u>	<u>Secondary</u>	<u>Federal</u>	<u>Total</u>
1400 Other Instructional Programs – Elementary / Secondary				
100 Personnel Services – Salaries				
100 Personnel Services – Salaries	20,876.00	9,410.00	20,187.00	50,473.00
Total Personnel Services – Salaries	\$20,876.00	\$9,410.00	\$20,187.00	\$50,473.00
200 Personnel Services – Employee Benefits				
220 Social Security Contributions	1,542.40	699.38	1,526.90	3,768.68
230 PSERS Retirement Contributions	10,048.57	3,226.74	3,198.77	16,474.08
260 Workers’ Compensation	134.05	60.41	129.62	324.08
Total Personnel Services – Employee Benefits	\$11,725.02	\$3,986.53	\$4,855.29	\$20,566.84
300 Purchased Professional and Technical Services				
329 Professional Educational Services – Other	500.00	17,289.95		17,789.95
Total Purchased Professional and Technical Services	\$500.00	\$17,289.95		\$17,789.95
500 Other Purchased Services				
568 Tuition To Private Residential Rehabilitative Institutions (PRRI) [In-State] and Detention Centers		100,237.13		100,237.13
Total Other Purchased Services		\$100,237.13		\$100,237.13
600 Supplies				
610 General Supplies	90.08	530.04	16.13	636.25
Total Supplies	\$90.08	\$530.04	\$16.13	\$636.25
Total 1400 Other Instructional Programs – Elementary / Secondary	\$33,191.10	\$131,453.65	\$25,058.42	\$189,703.17

General Fund (10)

1420 Summer School

	<u>Elementary</u>	<u>Secondary</u>	<u>Federal</u>	<u>Total</u>
100 Personnel Services – Salaries				
100 Personnel Services – Salaries	2,916.00	2,190.00	20,187.00	25,293.00
Total Personnel Services – Salaries	\$2,916.00	\$2,190.00	\$20,187.00	\$25,293.00
200 Personnel Services – Employee Benefits				
220 Social Security Contributions	217.73	161.95	1,526.90	1,906.58
230 PSERS Retirement Contributions	3,890.05	750.94	3,198.77	7,839.76
260 Workers’ Compensation	18.72	14.06	129.62	162.40
Total Personnel Services – Employee Benefits	\$4,126.50	\$926.95	\$4,855.29	\$9,908.74
600 Supplies				
610 General Supplies	90.08	530.04	16.13	636.25
Total Supplies	\$90.08	\$530.04	\$16.13	\$636.25
Total 1420 Summer School	\$7,132.58	\$3,646.99	\$25,058.42	\$35,837.99

General Fund (10)

1430 Homebound Instruction

100 Personnel Services – Salaries

100 Personnel Services – Salaries

Total Personnel Services – Salaries

200 Personnel Services – Employee Benefits

220 Social Security Contributions

230 PSERS Retirement Contributions

260 Workers’ Compensation

Total Personnel Services – Employee Benefits

300 Purchased Professional and Technical Services

329 Professional Educational Services – Other

Total Purchased Professional and Technical Services

Total 1430 Homebound Instruction

	<u>Elementary</u>	<u>Secondary</u>	<u>Federal</u>	<u>Total</u>
		2,120.00		2,120.00
		\$2,120.00		\$2,120.00
		159.02		159.02
		726.95		726.95
		13.61		13.61
		\$899.58		\$899.58
	500.00	17,289.95		17,789.95
	\$500.00	\$17,289.95		\$17,789.95
	\$500.00	\$20,309.53		\$20,809.53

LEA : 113361303 Cocalico SD

Printed 11/12/2020 2:03:48 PM

General Fund (10)

1440 Alternative Regular Education Programs	<u>Elementary</u>	<u>Secondary</u>	<u>Federal</u>	<u>Total</u>
500 <u>Other Purchased Services</u>				
568 Tuition To Private Residential Rehabilitative Institutions (PRRI) [In-State] and Detention Centers		100,237.13		100,237.13
Total Other Purchased Services		\$100,237.13		\$100,237.13
Total 1440 Alternative Regular Education Programs		\$100,237.13		\$100,237.13

LEA : 113361303 Cocalico SD

Printed 11/12/2020 2:03:48 PM

General Fund (10)

1441 Adjudicated / Court-Placed Programs

Elementary

Secondary

Federal

Total

500 Other Purchased Services

568 Tuition To Private Residential Rehabilitative Institutions (PRRI) [In-State] and Detention Centers

17,100.80

17,100.80

Total Other Purchased Services

\$17,100.80

\$17,100.80

Total 1441 Adjudicated / Court-Placed Programs

\$17,100.80

\$17,100.80

LEA : 113361303 Cocalico SD

Printed 11/12/2020 2:03:48 PM

General Fund (10)

1442 Alternative Education Programs

Elementary

Secondary

Federal

Total

500 Other Purchased Services

568 Tuition To Private Residential Rehabilitative Institutions (PRRI) [In-State] and Detention Centers

83,136.33

83,136.33

Total Other Purchased Services

\$83,136.33

\$83,136.33

Total 1442 Alternative Education Programs

\$83,136.33

\$83,136.33

General Fund (10)

	<u>Elementary</u>	<u>Secondary</u>	<u>Federal</u>	<u>Total</u>
1450 Instructional Programs Outside the Established School Day				
100 Personnel Services – Salaries				
100 Personnel Services – Salaries	17,960.00	5,100.00		23,060.00
Total Personnel Services – Salaries	\$17,960.00	\$5,100.00		\$23,060.00
200 Personnel Services – Employee Benefits				
220 Social Security Contributions	1,324.67	378.41		1,703.08
230 PSERS Retirement Contributions	6,158.52	1,748.85		7,907.37
260 Workers’ Compensation	115.33	32.74		148.07
Total Personnel Services – Employee Benefits	\$7,598.52	\$2,160.00		\$9,758.52
Total 1450 Instructional Programs Outside the Established School Day	\$25,558.52	\$7,260.00		\$32,818.52

General Fund (10)

2000 Support Services

Total

100 Personnel Services – Salaries

100 Personnel Services – Salaries 6,837,812.27

Total Personnel Services – Salaries \$6,837,812.27

200 Personnel Services – Employee Benefits

210 Group Insurance – Contracted Provider 11,998.35

220 Social Security Contributions 502,264.42

230 PSERS Retirement Contributions 2,337,361.76

240 Tuition Reimbursement 210,042.60

250 Unemployment Compensation 1,322.64

260 Workers' Compensation 43,336.96

270 Group Insurance – Self-Insurance 1,720,525.48

291 Other Retirement Plans 27,551.30

299 All Other Employee Benefits 73,931.67

Total Personnel Services – Employee Benefits \$4,928,335.18

300 Purchased Professional and Technical Services

310 Official / Administrative Services 48,871.66

322 Professional Educational Services – Ius 56,691.95

329 Professional Educational Services – Other 151,769.68

330 Other Professional Services 141,038.76

340 Technical Services 102,660.55

350 Security / Safety Services 65,188.85

360 Employee Training and Development Services 45,677.52

390 Other Purchased Professional and Technical Services 17,225.11

Total Purchased Professional and Technical Services \$629,124.08

400 Purchased Property Services

410 Cleaning Services 37,488.00

420 Utility Services 57,455.50

430 Repairs and Maintenance Services 288,804.65

440 Rentals 42,530.00

Total Purchased Property Services \$426,278.15

500 Other Purchased Services

513 Contracted Carriers 2,028,754.73

519 Student Transportation Services From Other Sources 4,960.60

520 Insurance – General 377.00

521 Fire Insurance 82,904.00

522 Automotive Liability Insurance 8,905.00

523 General Property and Liability Insurance 10,872.00

529 Other Insurance 981.27

530 Communications 148,800.18

549 Other Advertising/Public Relations 5,616.03

550 Printing and Binding 31,415.15

580 Travel 26,884.50

595 IU Payments By Withholding 23,624.87

Total Other Purchased Services \$2,374,095.33

LEA : 113361303 Cocalico SD

Printed 11/12/2020 2:04:00 PM

General Fund (10)

2000 Support Services

Total

600 Supplies

610 General Supplies	346,870.73
620 Energy	565,684.86
630 Food	14,562.93
640 Books and Periodicals	39,191.47
650 Supplies & Fees – Technology Related	196,445.99

Total Supplies	\$1,162,755.98
-----------------------	-----------------------

700 Property

752 Capital Equipment – Original and Additional	107,208.37
766 Capitalized Technology Equipment– Replacement	31,142.22

Total Property	\$138,350.59
-----------------------	---------------------

800 Other Objects

810 Dues and Fees	31,619.47
890 Miscellaneous Expenditures	19,469.39

Total Other Objects	\$51,088.86
----------------------------	--------------------

Total 2000 Support Services	\$16,547,840.44
------------------------------------	------------------------

General Fund (10)

2100 Support Services – Students

100 Personnel Services – Salaries

	<u>Elementary</u>	<u>Secondary</u>	<u>Federal</u>	<u>Total</u>
100 Personnel Services – Salaries	448,911.48	588,738.44		1,229,247.20
Total Personnel Services – Salaries	\$448,911.48	\$588,738.44		\$1,229,247.20

200 Personnel Services – Employee Benefits

210 Group Insurance – Contracted Provider	791.17	851.03		1,944.60
220 Social Security Contributions	33,255.23	42,684.19		90,023.60
230 PSERS Retirement Contributions	162,525.51	200,737.49		428,961.55
260 Workers' Compensation	2,598.48	3,496.29		7,324.99
270 Group Insurance – Self-Insurance	94,109.28	108,747.87		251,390.71
Total Personnel Services – Employee Benefits	\$293,279.67	\$356,516.87		\$779,645.45

300 Purchased Professional and Technical Services

330 Other Professional Services	7,826.00	47,799.00		55,625.00
Total Purchased Professional and Technical Services	\$7,826.00	\$47,799.00		\$55,625.00

400 Purchased Property Services

430 Repairs and Maintenance Services	948.68	4,019.07		4,967.75
Total Purchased Property Services	\$948.68	\$4,019.07		\$4,967.75

500 Other Purchased Services

580 Travel	381.25	352.21		1,871.69
Total Other Purchased Services	\$381.25	\$352.21		\$1,871.69

600 Supplies

610 General Supplies	8,569.79	5,913.48		14,560.89
630 Food		375.00		378.25
640 Books and Periodicals	983.60	159.01		1,175.60
650 Supplies & Fees – Technology Related	486.88	1,770.50	5,298.50	8,160.80
Total Supplies	\$10,040.27	\$8,217.99	\$5,298.50	\$24,275.54

700 Property

766 Capitalized Technology Equipment – Replacement	1,310.00	1,310.00		4,085.00
Total Property	\$1,310.00	\$1,310.00		\$4,085.00

800 Other Objects

810 Dues and Fees	1,017.00	1,732.00		2,899.00
Total Other Objects	\$1,017.00	\$1,732.00		\$2,899.00

Total 2100 Support Services – Students

	\$763,714.35	\$1,008,685.58	\$5,298.50	\$2,102,616.63
--	---------------------	-----------------------	-------------------	-----------------------

General Fund (10)

	<u>Elementary</u>	<u>Secondary</u>	<u>Federal</u>	<u>Total</u>
2120 Guidance Services				
100 Personnel Services – Salaries				
100 Personnel Services – Salaries	241,039.60	466,912.61		707,952.21
Total Personnel Services – Salaries	\$241,039.60	\$466,912.61		\$707,952.21
200 Personnel Services – Employee Benefits				
210 Group Insurance – Contracted Provider	441.00	693.00		1,134.00
220 Social Security Contributions	17,901.81	33,825.30		51,727.11
230 PSERS Retirement Contributions	82,555.81	160,007.72		242,563.53
260 Workers' Compensation	1,263.76	2,714.07		3,977.83
270 Group Insurance – Self-Insurance	52,406.83	82,353.58		134,760.41
Total Personnel Services – Employee Benefits	\$154,569.21	\$279,593.67		\$434,162.88
300 Purchased Professional and Technical Services				
330 Other Professional Services	7,826.00	47,799.00		55,625.00
Total Purchased Professional and Technical Services	\$7,826.00	\$47,799.00		\$55,625.00
400 Purchased Property Services				
430 Repairs and Maintenance Services		3,070.38		3,070.38
Total Purchased Property Services		\$3,070.38		\$3,070.38
500 Other Purchased Services				
580 Travel	113.42	215.04		328.46
Total Other Purchased Services	\$113.42	\$215.04		\$328.46
600 Supplies				
610 General Supplies	3,114.26	457.95		3,572.21
630 Food		375.00		375.00
640 Books and Periodicals	983.60	159.01		1,142.61
650 Supplies & Fees – Technology Related	42.38	1,326.00	5,298.50	6,666.88
Total Supplies	\$4,140.24	\$2,317.96	\$5,298.50	\$11,756.70
800 Other Objects				
810 Dues and Fees	452.50	1,167.50		1,620.00
Total Other Objects	\$452.50	\$1,167.50		\$1,620.00
Total 2120 Guidance Services	\$408,140.97	\$801,076.16	\$5,298.50	\$1,214,515.63

General Fund (10)

2140 Psychological Services

	<u>Elementary</u>	<u>Secondary</u>	<u>Federal</u>	<u>Total</u>
100 Personnel Services – Salaries				
100 Personnel Services – Salaries	207,871.88	121,825.83		329,697.71
Total Personnel Services – Salaries	\$207,871.88	\$121,825.83		\$329,697.71
200 Personnel Services – Employee Benefits				
210 Group Insurance – Contracted Provider	350.17	158.03		508.20
220 Social Security Contributions	15,353.42	8,858.89		24,212.31
230 PSERS Retirement Contributions	79,969.70	40,729.77		120,699.47
260 Workers' Compensation	1,334.72	782.22		2,116.94
270 Group Insurance – Self-Insurance	41,702.45	26,394.29		68,096.74
Total Personnel Services – Employee Benefits	\$138,710.46	\$76,923.20		\$215,633.66
400 Purchased Property Services				
430 Repairs and Maintenance Services	948.68	948.69		1,897.37
Total Purchased Property Services	\$948.68	\$948.69		\$1,897.37
500 Other Purchased Services				
580 Travel	267.83	137.17		405.00
Total Other Purchased Services	\$267.83	\$137.17		\$405.00
600 Supplies				
610 General Supplies	5,455.53	5,455.53		10,911.06
650 Supplies & Fees – Technology Related	444.50	444.50		889.00
Total Supplies	\$5,900.03	\$5,900.03		\$11,800.06
700 Property				
766 Capitalized Technology Equipment – Replacement	1,310.00	1,310.00		2,620.00
Total Property	\$1,310.00	\$1,310.00		\$2,620.00
800 Other Objects				
810 Dues and Fees	564.50	564.50		1,129.00
Total Other Objects	\$564.50	\$564.50		\$1,129.00
Total 2140 Psychological Services	\$355,573.38	\$207,609.42		\$563,182.80

General Fund (10)

2160 Social Work Services

Elementary

Secondary

Federal

Total

100 Personnel Services – Salaries

100 Personnel Services – Salaries

142,242.00

Total Personnel Services – Salaries

\$142,242.00

200 Personnel Services – Employee Benefits

210 Group Insurance – Contracted Provider

252.00

220 Social Security Contributions

10,507.92

230 PSERS Retirement Contributions

48,774.69

260 Workers' Compensation

913.32

270 Group Insurance – Self-Insurance

33,560.18

Total Personnel Services – Employee Benefits

\$94,008.11

500 Other Purchased Services

580 Travel

1,138.23

Total Other Purchased Services

\$1,138.23

600 Supplies

610 General Supplies

77.62

640 Books and Periodicals

32.99

Total Supplies

\$110.61

800 Other Objects

810 Dues and Fees

150.00

Total Other Objects

\$150.00

Total 2160 Social Work Services

\$237,648.95

General Fund (10)

2170 Student Accounting Services

100 Personnel Services – Salaries

	<u>Elementary</u>	<u>Secondary</u>	<u>Federal</u>	<u>Total</u>
100 Personnel Services – Salaries				49,355.28
Total Personnel Services – Salaries				\$49,355.28
200 Personnel Services – Employee Benefits				
210 Group Insurance – Contracted Provider				50.40
220 Social Security Contributions				3,576.26
230 PSERS Retirement Contributions				16,923.86
260 Workers' Compensation				316.90
270 Group Insurance – Self-Insurance				14,973.38
Total Personnel Services – Employee Benefits				\$35,840.80
600 Supplies				
630 Food				3.25
650 Supplies & Fees – Technology Related				604.92
Total Supplies				\$608.17
700 Property				
766 Capitalized Technology Equipment– Replacement				1,465.00
Total Property				\$1,465.00
Total 2170 Student Accounting Services				\$87,269.25

Total 2170 Student Accounting Services

\$87,269.25

General Fund (10)

2200 Support Services – Instructional Staff

	<u>Elementary</u>	<u>Secondary</u>	<u>Federal</u>	<u>Total</u>
100 Personnel Services – Salaries				
100 Personnel Services – Salaries	595,454.25	518,325.30	700.00	1,114,479.55
Total Personnel Services – Salaries	\$595,454.25	\$518,325.30	\$700.00	\$1,114,479.55
200 Personnel Services – Employee Benefits				
210 Group Insurance – Contracted Provider	758.10	571.20		1,329.30
220 Social Security Contributions	44,122.18	38,416.95	51.90	82,591.03
230 PSERS Retirement Contributions	203,679.51	177,366.05	120.03	381,165.59
240 Tuition Reimbursement	64,320.00	123,746.30		188,066.30
260 Workers' Compensation	3,823.34	3,328.12	4.49	7,155.95
270 Group Insurance – Self-Insurance	134,011.74	90,588.94		224,600.68
299 All Other Employee Benefits	5,160.86	5,160.88		10,321.74
Total Personnel Services – Employee Benefits	\$455,875.73	\$439,178.44	\$176.42	\$895,230.59
300 Purchased Professional and Technical Services				
322 Professional Educational Services – lus	3,350.00	9,030.00		12,380.00
329 Professional Educational Services – Other	70,786.63	46,154.25	29,593.87	146,534.75
360 Employee Training and Development Services	11,489.33	13,351.26	5,350.00	30,190.59
Total Purchased Professional and Technical Services	\$85,625.96	\$68,535.51	\$34,943.87	\$189,105.34
400 Purchased Property Services				
430 Repairs and Maintenance Services	5,078.00	6,517.08		11,595.08
Total Purchased Property Services	\$5,078.00	\$6,517.08		\$11,595.08
500 Other Purchased Services				
550 Printing and Binding	75.00	75.00		150.00
580 Travel	1,959.17	4,939.63		6,898.80
Total Other Purchased Services	\$2,034.17	\$5,014.63		\$7,048.80
600 Supplies				
610 General Supplies	14,453.84	52,561.01		67,014.85
630 Food	501.15	501.17		1,002.32
640 Books and Periodicals	14,258.36	16,297.11	4,947.88	35,503.35
650 Supplies & Fees – Technology Related	14,072.75	30,072.23		44,144.98
Total Supplies	\$43,286.10	\$99,431.52	\$4,947.88	\$147,665.50
700 Property				
752 Capital Equipment – Original and Additional	34,677.80	65,026.60		99,704.40
Total Property	\$34,677.80	\$65,026.60		\$99,704.40
800 Other Objects				
810 Dues and Fees	711.00	1,352.34		2,063.34
Total Other Objects	\$711.00	\$1,352.34		\$2,063.34
Total 2200 Support Services – Instructional Staff	\$1,222,743.01	\$1,203,381.42	\$40,768.17	\$2,466,892.60

General Fund (10)

	<u>Elementary</u>	<u>Secondary</u>	<u>Federal</u>	<u>Total</u>
2240 Computer-Assisted Instruction Support Services				
100 Personnel Services – Salaries				
100 Personnel Services – Salaries	53,859.21	23,082.52		76,941.73
Total Personnel Services – Salaries	\$53,859.21	\$23,082.52		\$76,941.73
200 Personnel Services – Employee Benefits				
210 Group Insurance – Contracted Provider	88.20	37.80		126.00
220 Social Security Contributions	3,918.78	1,679.49		5,598.27
230 PSERS Retirement Contributions	18,468.31	7,915.00		26,383.31
260 Workers' Compensation	345.82	148.21		494.03
270 Group Insurance – Self-Insurance	10,481.36	4,492.02		14,973.38
Total Personnel Services – Employee Benefits	\$33,302.47	\$14,272.52		\$47,574.99
Total 2240 Computer-Assisted Instruction Support Services	\$87,161.68	\$37,355.04		\$124,516.72

General Fund (10)

2250 School Library Services

	<u>Elementary</u>	<u>Secondary</u>	<u>Federal</u>	<u>Total</u>
100 Personnel Services – Salaries				
100 Personnel Services – Salaries	265,764.50	177,285.02		443,049.52
Total Personnel Services – Salaries	\$265,764.50	\$177,285.02		\$443,049.52
200 Personnel Services – Employee Benefits				
210 Group Insurance – Contracted Provider	405.30	331.80		737.10
220 Social Security Contributions	19,423.30	12,865.76		32,289.06
230 PSERS Retirement Contributions	90,850.85	60,490.63		151,341.48
260 Workers' Compensation	1,706.45	1,138.33		2,844.78
270 Group Insurance – Self-Insurance	89,840.25	59,893.50		149,733.75
Total Personnel Services – Employee Benefits	\$202,226.15	\$134,720.02		\$336,946.17
300 Purchased Professional and Technical Services				
329 Professional Educational Services – Other	30,726.68	2,021.28		32,747.96
Total Purchased Professional and Technical Services	\$30,726.68	\$2,021.28		\$32,747.96
400 Purchased Property Services				
430 Repairs and Maintenance Services	4,129.32	5,568.39		9,697.71
Total Purchased Property Services	\$4,129.32	\$5,568.39		\$9,697.71
500 Other Purchased Services				
580 Travel	12.41	39.56		51.97
Total Other Purchased Services	\$12.41	\$39.56		\$51.97
600 Supplies				
610 General Supplies	11,961.17	50,068.34		62,029.51
640 Books and Periodicals	14,101.19	16,171.18		30,272.37
650 Supplies & Fees – Technology Related	9,170.50	25,169.97		34,340.47
Total Supplies	\$35,232.86	\$91,409.49		\$126,642.35
700 Property				
752 Capital Equipment – Original and Additional	34,677.80	65,026.60		99,704.40
Total Property	\$34,677.80	\$65,026.60		\$99,704.40
800 Other Objects				
810 Dues and Fees	180.00	821.34		1,001.34
Total Other Objects	\$180.00	\$821.34		\$1,001.34
Total 2250 School Library Services	\$572,949.72	\$476,891.70		\$1,049,841.42

General Fund (10)

2260 Instruction and Curriculum Development Services

	<u>Elementary</u>	<u>Secondary</u>	<u>Federal</u>	<u>Total</u>
100 Personnel Services – Salaries				
100 Personnel Services – Salaries	194,039.97	210,105.26		404,145.23
Total Personnel Services – Salaries	\$194,039.97	\$210,105.26		\$404,145.23
200 Personnel Services – Employee Benefits				
210 Group Insurance – Contracted Provider	201.60	138.60		340.20
220 Social Security Contributions	14,717.29	15,844.04		30,561.33
230 PSERS Retirement Contributions	66,416.16	71,925.11		138,341.27
260 Workers' Compensation	1,245.90	1,349.07		2,594.97
270 Group Insurance – Self-Insurance	26,203.44	18,716.73		44,920.17
299 All Other Employee Benefits	3,239.53	3,239.54		6,479.07
Total Personnel Services – Employee Benefits	\$112,023.92	\$111,213.09		\$223,237.01
300 Purchased Professional and Technical Services				
329 Professional Educational Services – Other	3,453.07	3,031.97		6,485.04
Total Purchased Professional and Technical Services	\$3,453.07	\$3,031.97		\$6,485.04
400 Purchased Property Services				
430 Repairs and Maintenance Services	948.68	948.69		1,897.37
Total Purchased Property Services	\$948.68	\$948.69		\$1,897.37
500 Other Purchased Services				
550 Printing and Binding	75.00	75.00		150.00
580 Travel	1,131.66	964.04		2,095.70
Total Other Purchased Services	\$1,206.66	\$1,039.04		\$2,245.70
600 Supplies				
610 General Supplies	517.10	517.10		1,034.20
630 Food	41.85	41.86		83.71
640 Books and Periodicals	31.25			31.25
Total Supplies	\$590.20	\$558.96		\$1,149.16
800 Other Objects				
810 Dues and Fees	454.00	454.00		908.00
Total Other Objects	\$454.00	\$454.00		\$908.00
Total 2260 Instruction and Curriculum Development Services	\$312,716.50	\$327,351.01		\$640,067.51

General Fund (10)

2270 Instructional Staff Professional Development Services

	<u>Elementary</u>	<u>Secondary</u>	<u>Federal</u>	<u>Total</u>
100 Personnel Services – Salaries				
100 Personnel Services – Salaries	32,271.57	58,333.50	700.00	91,305.07
Total Personnel Services – Salaries	\$32,271.57	\$58,333.50	\$700.00	\$91,305.07
200 Personnel Services – Employee Benefits				
220 Social Security Contributions	2,376.92	4,341.76	51.90	6,770.58
230 PSERS Retirement Contributions	10,980.52	20,071.63	120.03	31,172.18
240 Tuition Reimbursement	64,320.00	123,746.30		188,066.30
260 Workers' Compensation	207.22	374.55	4.49	586.26
Total Personnel Services – Employee Benefits	\$77,884.66	\$148,534.24	\$176.42	\$226,595.32
300 Purchased Professional and Technical Services				
322 Professional Educational Services – Ius	3,350.00	9,030.00		12,380.00
329 Professional Educational Services – Other	36,606.88	41,101.00	29,593.87	107,301.75
360 Employee Training and Development Services	11,489.33	13,351.26	5,350.00	30,190.59
Total Purchased Professional and Technical Services	\$51,446.21	\$63,482.26	\$34,943.87	\$149,872.34
500 Other Purchased Services				
580 Travel	705.48	3,826.41		4,531.89
Total Other Purchased Services	\$705.48	\$3,826.41		\$4,531.89
600 Supplies				
610 General Supplies	1,975.57	1,975.57		3,951.14
630 Food	459.30	459.31		918.61
640 Books and Periodicals			4,947.88	4,947.88
650 Supplies & Fees – Technology Related	4,902.25	4,902.26		9,804.51
Total Supplies	\$7,337.12	\$7,337.14	\$4,947.88	\$19,622.14
Total 2270 Instructional Staff Professional Development Services	\$169,645.04	\$281,513.55	\$40,768.17	\$491,926.76

General Fund (10)

	<u>Elementary</u>	<u>Secondary</u>	<u>Federal</u>	<u>Total</u>
2290 Other Instructional Staff Services				
100 Personnel Services – Salaries				
100 Personnel Services – Salaries	49,519.00	49,519.00		99,038.00
Total Personnel Services – Salaries	\$49,519.00	\$49,519.00		\$99,038.00
200 Personnel Services – Employee Benefits				
210 Group Insurance – Contracted Provider	63.00	63.00		126.00
220 Social Security Contributions	3,685.89	3,685.90		7,371.79
230 PSERS Retirement Contributions	16,963.67	16,963.68		33,927.35
260 Workers' Compensation	317.95	317.96		635.91
270 Group Insurance – Self-Insurance	7,486.69	7,486.69		14,973.38
299 All Other Employee Benefits	1,921.33	1,921.34		3,842.67
Total Personnel Services – Employee Benefits	\$30,438.53	\$30,438.57		\$60,877.10
500 Other Purchased Services				
580 Travel	109.62	109.62		219.24
Total Other Purchased Services	\$109.62	\$109.62		\$219.24
600 Supplies				
640 Books and Periodicals	125.92	125.93		251.85
Total Supplies	\$125.92	\$125.93		\$251.85
800 Other Objects				
810 Dues and Fees	77.00	77.00		154.00
Total Other Objects	\$77.00	\$77.00		\$154.00
Total 2290 Other Instructional Staff Services	\$80,270.07	\$80,270.12		\$160,540.19

General Fund (10)

2300 Support Services – Administration

	<u>Elementary</u>	<u>Secondary</u>	<u>Federal</u>	<u>Total</u>
100 Personnel Services – Salaries				
100 Personnel Services – Salaries	588,570.93	852,724.42		2,012,097.30
Total Personnel Services – Salaries	\$588,570.93	\$852,724.42		\$2,012,097.30
200 Personnel Services – Employee Benefits				
210 Group Insurance – Contracted Provider	1,551.90	2,340.45		5,240.55
220 Social Security Contributions	43,885.12	62,867.26		148,311.96
230 PSERS Retirement Contributions	201,664.86	289,881.24		687,162.03
250 Unemployment Compensation	599.04	101.07		700.11
260 Workers' Compensation	3,779.14	5,475.25		12,919.45
270 Group Insurance – Self-Insurance	149,733.79	226,360.77		480,908.21
291 Other Retirement Plans	6,094.54	10,893.69		24,965.36
299 All Other Employee Benefits	13,138.78	13,138.79		40,441.98
Total Personnel Services – Employee Benefits	\$420,447.17	\$611,058.52		\$1,400,649.65
300 Purchased Professional and Technical Services				
310 Official / Administrative Services				48,871.66
330 Other Professional Services				79,812.26
390 Other Purchased Professional and Technical Services				1,350.00
Total Purchased Professional and Technical Services				\$130,033.92
400 Purchased Property Services				
430 Repairs and Maintenance Services				6,553.57
Total Purchased Property Services				\$6,553.57
500 Other Purchased Services				
520 Insurance – General				377.00
549 Other Advertising/Public Relations				1,692.42
550 Printing and Binding	1,624.47	2,872.50		4,496.97
580 Travel	4.64	159.72		2,255.91
Total Other Purchased Services	\$1,629.11	\$3,032.22		\$8,822.30
600 Supplies				
610 General Supplies	14,186.13	7,204.67		39,829.58
630 Food	1,888.15	2,834.60		12,213.01
640 Books and Periodicals	1,338.51			2,512.52
650 Supplies & Fees – Technology Related	499.99	499.99		4,598.97
Total Supplies	\$17,912.78	\$10,539.26		\$59,154.08
700 Property				
752 Capital Equipment – Original and Additional	5,490.00			5,490.00
Total Property	\$5,490.00			\$5,490.00
800 Other Objects				
810 Dues and Fees	3,172.00	4,155.00		24,471.47
Total Other Objects	\$3,172.00	\$4,155.00		\$24,471.47
Total 2300 Support Services – Administration	\$1,037,221.99	\$1,481,509.42		\$3,647,272.29

General Fund (10)

2310 Board Services

Elementary

Secondary

Federal

Total

300 Purchased Professional and Technical Services

330 Other Professional Services

41,750.00

Total Purchased Professional and Technical Services

\$41,750.00

500 Other Purchased Services

549 Other Advertising/Public Relations

1,692.42

Total Other Purchased Services

\$1,692.42

600 Supplies

610 General Supplies

4,400.14

630 Food

3,484.51

650 Supplies & Fees – Technology Related

3,400.00

Total Supplies

\$11,284.65

800 Other Objects

810 Dues and Fees

14,136.13

Total Other Objects

\$14,136.13

Total 2310 Board Services

\$68,863.20

LEA : 113361303 Cocalico SD

Printed 11/12/2020 2:04:00 PM

General Fund (10)

2320 Board Treasurer Services

Elementary

Secondary

Federal

Total

500 Other Purchased Services

520 Insurance – General

174.00

Total Other Purchased Services

\$174.00

Total 2320 Board Treasurer Services

\$174.00

General Fund (10)

2330 Tax Assessment and Collection Services

Elementary

Secondary

Federal

Total

100 Personnel Services – Salaries

100 Personnel Services – Salaries

41,466.20

Total Personnel Services – Salaries

\$41,466.20

200 Personnel Services – Employee Benefits

210 Group Insurance – Contracted Provider

50.40

220 Social Security Contributions

2,967.03

230 PSERS Retirement Contributions

14,218.83

260 Workers' Compensation

266.25

270 Group Insurance – Self-Insurance

14,973.38

Total Personnel Services – Employee Benefits

\$32,475.89

300 Purchased Professional and Technical Services

310 Official / Administrative Services

48,871.66

330 Other Professional Services

5,151.80

Total Purchased Professional and Technical Services

\$54,023.46

500 Other Purchased Services

520 Insurance – General

203.00

Total Other Purchased Services

\$203.00

600 Supplies

610 General Supplies

3,780.02

Total Supplies

\$3,780.02

Total 2330 Tax Assessment and Collection Services

\$131,948.57

General Fund (10)

2350 Legal and Accounting Services

Elementary

Secondary

Federal

Total

300 Purchased Professional and Technical Services

330 Other Professional Services

32,910.46

Total Purchased Professional and Technical Services

\$32,910.46

Total 2350 Legal and Accounting Services

\$32,910.46

General Fund (10)

2360 Office of the Superintendent / Executive Director Services

Elementary Secondary Federal Total

100	<u>Personnel Services – Salaries</u>			
	100 Personnel Services – Salaries			529,335.75
Total Personnel Services – Salaries				\$529,335.75
200	<u>Personnel Services – Employee Benefits</u>			
	210 Group Insurance – Contracted Provider			1,297.80
	220 Social Security Contributions			38,592.55
	230 PSERS Retirement Contributions			181,397.10
	260 Workers' Compensation			3,398.81
	270 Group Insurance – Self-Insurance			89,840.27
	291 Other Retirement Plans			7,977.13
	299 All Other Employee Benefits			14,164.41
Total Personnel Services – Employee Benefits				\$336,668.07
300	<u>Purchased Professional and Technical Services</u>			
	390 Other Purchased Professional and Technical Services			1,350.00
Total Purchased Professional and Technical Services				\$1,350.00
400	<u>Purchased Property Services</u>			
	430 Repairs and Maintenance Services			6,553.57
Total Purchased Property Services				\$6,553.57
500	<u>Other Purchased Services</u>			
	580 Travel			2,091.55
Total Other Purchased Services				\$2,091.55
600	<u>Supplies</u>			
	610 General Supplies			5,973.67
	630 Food			4,005.75
	640 Books and Periodicals			1,174.01
	650 Supplies & Fees – Technology Related			198.99
Total Supplies				\$11,352.42
800	<u>Other Objects</u>			
	810 Dues and Fees			3,008.34
Total Other Objects				\$3,008.34
Total 2360 Office of the Superintendent / Executive Director Services				\$890,359.70

General Fund (10)

2380 Office of the Principal Services

	<u>Elementary</u>	<u>Secondary</u>	<u>Federal</u>	<u>Total</u>
100 Personnel Services – Salaries				
100 Personnel Services – Salaries	588,570.93	852,724.42		1,441,295.35
Total Personnel Services – Salaries	\$588,570.93	\$852,724.42		\$1,441,295.35
200 Personnel Services – Employee Benefits				
210 Group Insurance – Contracted Provider	1,551.90	2,340.45		3,892.35
220 Social Security Contributions	43,885.12	62,867.26		106,752.38
230 PSERS Retirement Contributions	201,664.86	289,881.24		491,546.10
250 Unemployment Compensation	599.04	101.07		700.11
260 Workers' Compensation	3,779.14	5,475.25		9,254.39
270 Group Insurance – Self-Insurance	149,733.79	226,360.77		376,094.56
291 Other Retirement Plans	6,094.54	10,893.69		16,988.23
299 All Other Employee Benefits	13,138.78	13,138.79		26,277.57
Total Personnel Services – Employee Benefits	\$420,447.17	\$611,058.52		\$1,031,505.69
500 Other Purchased Services				
550 Printing and Binding	1,624.47	2,872.50		4,496.97
580 Travel	4.64	159.72		164.36
Total Other Purchased Services	\$1,629.11	\$3,032.22		\$4,661.33
600 Supplies				
610 General Supplies	14,186.13	7,204.67		21,390.80
630 Food	1,888.15	2,834.60		4,722.75
640 Books and Periodicals	1,338.51			1,338.51
650 Supplies & Fees – Technology Related	499.99	499.99		999.98
Total Supplies	\$17,912.78	\$10,539.26		\$28,452.04
700 Property				
752 Capital Equipment – Original and Additional	5,490.00			5,490.00
Total Property	\$5,490.00			\$5,490.00
800 Other Objects				
810 Dues and Fees	3,172.00	4,155.00		7,327.00
Total Other Objects	\$3,172.00	\$4,155.00		\$7,327.00
Total 2380 Office of the Principal Services	\$1,037,221.99	\$1,481,509.42		\$2,518,731.41

LEA : 113361303 Cocalico SD

Printed 11/12/2020 2:04:00 PM

General Fund (10)

2390 Other Administration Services

Elementary

Secondary

Federal

Total

600 Supplies

610 General Supplies

4,284.95

Total Supplies

\$4,284.95

Total 2390 Other Administration Services

\$4,284.95

General Fund (10)

2400 Support Services – Pupil Health

Elementary Secondary Federal Total

100 Personnel Services – Salaries

100 Personnel Services – Salaries 329,539.71

Total Personnel Services – Salaries \$329,539.71

200 Personnel Services – Employee Benefits

210 Group Insurance – Contracted Provider 575.40

220 Social Security Contributions 23,696.17

230 PSERS Retirement Contributions 112,999.08

260 Workers' Compensation 2,115.93

270 Group Insurance – Self-Insurance 104,813.73

Total Personnel Services – Employee Benefits \$244,200.31

300 Purchased Professional and Technical Services

329 Professional Educational Services – Other 5,234.93

330 Other Professional Services 1,193.50

Total Purchased Professional and Technical Services \$6,428.43

400 Purchased Property Services

430 Repairs and Maintenance Services 5,953.74

Total Purchased Property Services \$5,953.74

500 Other Purchased Services

580 Travel 303.53

Total Other Purchased Services \$303.53

600 Supplies

610 General Supplies 6,369.18

Total Supplies \$6,369.18

800 Other Objects

810 Dues and Fees 130.00

Total Other Objects \$130.00

Total 2400 Support Services – Pupil Health \$592,924.90

LEA : 113361303 Cocalico SD

Printed 11/12/2020 2:04:00 PM

General Fund (10)

2420 Medical Services

Elementary

Secondary

Federal

Total

300 Purchased Professional and Technical Services

329 Professional Educational Services – Other

160.00

330 Other Professional Services

1,193.50

Total Purchased Professional and Technical Services

\$1,353.50

600 Supplies

610 General Supplies

4,882.32

Total Supplies

\$4,882.32

Total 2420 Medical Services

\$6,235.82

General Fund (10)

2440 Nursing Services

	<u>Elementary</u>	<u>Secondary</u>	<u>Federal</u>	<u>Total</u>
100 Personnel Services – Salaries				
100 Personnel Services – Salaries				329,539.71
Total Personnel Services – Salaries				\$329,539.71
200 Personnel Services – Employee Benefits				
210 Group Insurance – Contracted Provider				575.40
220 Social Security Contributions				23,696.17
230 PSERS Retirement Contributions				112,999.08
260 Workers' Compensation				2,115.93
270 Group Insurance – Self-Insurance				104,813.73
Total Personnel Services – Employee Benefits				\$244,200.31
300 Purchased Professional and Technical Services				
329 Professional Educational Services – Other				5,074.93
Total Purchased Professional and Technical Services				\$5,074.93
400 Purchased Property Services				
430 Repairs and Maintenance Services				5,953.74
Total Purchased Property Services				\$5,953.74
500 Other Purchased Services				
580 Travel				303.53
Total Other Purchased Services				\$303.53
600 Supplies				
610 General Supplies				1,486.86
Total Supplies				\$1,486.86
800 Other Objects				
810 Dues and Fees				130.00
Total Other Objects				\$130.00
Total 2440 Nursing Services				\$586,689.08

General Fund (10)

	<u>Elementary</u>	<u>Secondary</u>	<u>Federal</u>	<u>Total</u>
2500 Support Services – Business				
100 Personnel Services – Salaries				
100 Personnel Services – Salaries				350,344.04
Total Personnel Services – Salaries				\$350,344.04
200 Personnel Services – Employee Benefits				
210 Group Insurance – Contracted Provider				655.20
220 Social Security Contributions				26,048.06
230 PSERS Retirement Contributions				119,762.87
260 Workers' Compensation				2,249.52
270 Group Insurance – Self-Insurance				74,866.89
291 Other Retirement Plans				2,585.94
299 All Other Employee Benefits				6,479.07
Total Personnel Services – Employee Benefits				\$232,647.55
300 Purchased Professional and Technical Services				
340 Technical Services				20,704.80
Total Purchased Professional and Technical Services				\$20,704.80
400 Purchased Property Services				
430 Repairs and Maintenance Services				10,789.06
Total Purchased Property Services				\$10,789.06
500 Other Purchased Services				
530 Communications				32,729.30
580 Travel				558.22
Total Other Purchased Services				\$33,287.52
600 Supplies				
610 General Supplies				3,369.62
630 Food				247.08
650 Supplies & Fees – Technology Related				2,723.00
Total Supplies				\$6,339.70
700 Property				
766 Capitalized Technology Equipment – Replacement				2,620.00
Total Property				\$2,620.00
800 Other Objects				
810 Dues and Fees				722.33
890 Miscellaneous Expenditures				16,203.89
Total Other Objects				\$16,926.22
Total 2500 Support Services – Business				\$673,658.89

General Fund (10)

2510 Fiscal Services

	<u>Elementary</u>	<u>Secondary</u>	<u>Federal</u>	<u>Total</u>
100 Personnel Services – Salaries				
100 Personnel Services – Salaries				350,344.04
Total Personnel Services – Salaries				\$350,344.04
200 Personnel Services – Employee Benefits				
210 Group Insurance – Contracted Provider				655.20
220 Social Security Contributions				26,048.06
230 PSERS Retirement Contributions				119,762.87
260 Workers' Compensation				2,249.52
270 Group Insurance – Self-Insurance				74,866.89
291 Other Retirement Plans				2,585.94
299 All Other Employee Benefits				6,479.07
Total Personnel Services – Employee Benefits				\$232,647.55
300 Purchased Professional and Technical Services				
340 Technical Services				20,704.80
Total Purchased Professional and Technical Services				\$20,704.80
400 Purchased Property Services				
430 Repairs and Maintenance Services				10,789.06
Total Purchased Property Services				\$10,789.06
500 Other Purchased Services				
530 Communications				32,729.30
580 Travel				558.22
Total Other Purchased Services				\$33,287.52
600 Supplies				
610 General Supplies				3,369.62
630 Food				247.08
650 Supplies & Fees – Technology Related				2,723.00
Total Supplies				\$6,339.70
700 Property				
766 Capitalized Technology Equipment – Replacement				2,620.00
Total Property				\$2,620.00
800 Other Objects				
810 Dues and Fees				722.33
890 Miscellaneous Expenditures				16,203.89
Total Other Objects				\$16,926.22
Total 2510 Fiscal Services				\$673,658.89

General Fund (10)

2511 Supervision of Fiscal Services - Head of Component

Elementary Secondary Federal Total

100 Personnel Services – Salaries				
100 Personnel Services – Salaries				212,237.00
Total Personnel Services – Salaries				\$212,237.00
200 Personnel Services – Employee Benefits				
210 Group Insurance – Contracted Provider				504.00
220 Social Security Contributions				16,296.81
230 PSERS Retirement Contributions				72,705.81
260 Workers' Compensation				1,362.75
270 Group Insurance – Self-Insurance				29,946.75
291 Other Retirement Plans				2,585.94
299 All Other Employee Benefits				6,479.07
Total Personnel Services – Employee Benefits				\$129,881.13
500 Other Purchased Services				
580 Travel				421.44
Total Other Purchased Services				\$421.44
800 Other Objects				
810 Dues and Fees				722.33
Total Other Objects				\$722.33
Total 2511 Supervision of Fiscal Services - Head of Component				\$343,261.90

General Fund (10)

2515 Financial Accounting Services

Elementary Secondary Federal Total

100	<u>Personnel Services – Salaries</u>			
	100 Personnel Services – Salaries			138,107.04
Total Personnel Services – Salaries				\$138,107.04
200	<u>Personnel Services – Employee Benefits</u>			
	210 Group Insurance – Contracted Provider			151.20
	220 Social Security Contributions			9,751.25
	230 PSERS Retirement Contributions			47,057.06
	260 Workers' Compensation			886.77
	270 Group Insurance – Self-Insurance			44,920.14
Total Personnel Services – Employee Benefits				\$102,766.42
300	<u>Purchased Professional and Technical Services</u>			
	340 Technical Services			20,704.80
Total Purchased Professional and Technical Services				\$20,704.80
400	<u>Purchased Property Services</u>			
	430 Repairs and Maintenance Services			10,789.06
Total Purchased Property Services				\$10,789.06
500	<u>Other Purchased Services</u>			
	530 Communications			32,729.30
	580 Travel			136.78
Total Other Purchased Services				\$32,866.08
600	<u>Supplies</u>			
	610 General Supplies			3,369.62
	630 Food			247.08
	650 Supplies & Fees – Technology Related			2,723.00
Total Supplies				\$6,339.70
700	<u>Property</u>			
	766 Capitalized Technology Equipment – Replacement			2,620.00
Total Property				\$2,620.00
800	<u>Other Objects</u>			
	890 Miscellaneous Expenditures			16,203.89
Total Other Objects				\$16,203.89
Total 2515 Financial Accounting Services				\$330,396.99

LEA : 113361303 Cocalico SD

Printed 11/12/2020 2:04:00 PM

General Fund (10)

2600 Operation and Maintenance of Plant Services

Elementary

Secondary

Federal

Total

100 Personnel Services – Salaries

100 Personnel Services – Salaries 1,138,021.60

Total Personnel Services – Salaries \$1,138,021.60

200 Personnel Services – Employee Benefits

210 Group Insurance – Contracted Provider 1,484.70

220 Social Security Contributions 82,229.29

230 PSERS Retirement Contributions 386,225.16

260 Workers' Compensation 7,307.11

270 Group Insurance – Self-Insurance 434,227.98

299 All Other Employee Benefits 3,842.67

Total Personnel Services – Employee Benefits \$915,316.91

300 Purchased Professional and Technical Services

322 Professional Educational Services – lus 1,400.00

350 Security / Safety Services 65,188.85

390 Other Purchased Professional and Technical Services 12,609.61

Total Purchased Professional and Technical Services \$79,198.46

400 Purchased Property Services

410 Cleaning Services 37,488.00

420 Utility Services 57,455.50

430 Repairs and Maintenance Services 245,255.04

440 Rentals 42,530.00

Total Purchased Property Services \$382,728.54

500 Other Purchased Services

521 Fire Insurance 82,904.00

522 Automotive Liability Insurance 8,905.00

523 General Property and Liability Insurance 10,872.00

529 Other Insurance 981.27

530 Communications 113,268.73

580 Travel 155.42

Total Other Purchased Services \$217,086.42

600 Supplies

610 General Supplies 67,806.36 117,225.83 10,748.34 195,780.53

620 Energy 565,684.86

630 Food 119.00

650 Supplies & Fees – Technology Related 4,830.00

Total Supplies \$67,806.36 \$117,225.83 \$10,748.34 \$766,414.39

700 Property

752 Capital Equipment – Original and Additional 863.17

766 Capitalized Technology Equipment – Replacement 13,346.22

Total Property \$14,209.39

800 Other Objects

LEA : 113361303 Cocalico SD

Printed 11/12/2020 2:04:00 PM

General Fund (10)

2600 Operation and Maintenance of Plant Services

Elementary

Secondary

Federal

Total

800 Other Objects

810 Dues and Fees

250.00

890 Miscellaneous Expenditures

3,265.50

Total Other Objects

\$3,515.50

Total 2600 Operation and Maintenance of Plant Services

\$67,806.36

\$117,225.83

\$10,748.34

\$3,516,491.21

General Fund (10)

2610 Supervision of Operation and Maintenance of Plant Services

	<u>Elementary</u>	<u>Secondary</u>	<u>Federal</u>	<u>Total</u>
100 Personnel Services – Salaries				
100 Personnel Services – Salaries				130,823.43
Total Personnel Services – Salaries				\$130,823.43
200 Personnel Services – Employee Benefits				
210 Group Insurance – Contracted Provider				176.40
220 Social Security Contributions				9,802.97
230 PSERS Retirement Contributions				44,827.95
260 Workers' Compensation				840.00
270 Group Insurance – Self-Insurance				29,946.75
299 All Other Employee Benefits				3,842.67
Total Personnel Services – Employee Benefits				\$89,436.74
400 Purchased Property Services				
430 Repairs and Maintenance Services				2,039.82
Total Purchased Property Services				\$2,039.82
600 Supplies				
610 General Supplies	329.44	329.44		658.88
630 Food				119.00
650 Supplies & Fees – Technology Related				4,830.00
Total Supplies	\$329.44	\$329.44		\$5,607.88
800 Other Objects				
810 Dues and Fees				250.00
Total Other Objects				\$250.00
Total 2610 Supervision of Operation and Maintenance of Plant Services	\$329.44	\$329.44		\$228,157.87

General Fund (10)

2611 Supervision of Operation and Maintenance of Plant Services – Head of Component

	<u>Elementary</u>	<u>Secondary</u>	<u>Federal</u>	<u>Total</u>
100 Personnel Services – Salaries				
100 Personnel Services – Salaries				130,823.43
Total Personnel Services – Salaries				\$130,823.43
200 Personnel Services – Employee Benefits				
210 Group Insurance – Contracted Provider				176.40
220 Social Security Contributions				9,802.97
230 PSERS Retirement Contributions				44,827.95
260 Workers' Compensation				840.00
270 Group Insurance – Self-Insurance				29,946.75
299 All Other Employee Benefits				3,842.67
Total Personnel Services – Employee Benefits				\$89,436.74
400 Purchased Property Services				
430 Repairs and Maintenance Services				2,039.82
Total Purchased Property Services				\$2,039.82
600 Supplies				
610 General Supplies	329.44	329.44		658.88
630 Food				119.00
650 Supplies & Fees – Technology Related				4,830.00
Total Supplies	\$329.44	\$329.44		\$5,607.88
800 Other Objects				
810 Dues and Fees				250.00
Total Other Objects				\$250.00
Total 2611 Supervision of Operation and Maintenance of Plant Services – Head of Component	\$329.44	\$329.44		\$228,157.87

General Fund (10)

2620 Operation of Buildings Services

100 Personnel Services – Salaries

100 Personnel Services – Salaries				1,007,198.17
-----------------------------------	--	--	--	--------------

Total Personnel Services – Salaries				\$1,007,198.17
--	--	--	--	-----------------------

200 Personnel Services – Employee Benefits

210 Group Insurance – Contracted Provider				1,308.30
---	--	--	--	----------

220 Social Security Contributions				72,426.32
-----------------------------------	--	--	--	-----------

230 PSERS Retirement Contributions				341,397.21
------------------------------------	--	--	--	------------

260 Workers' Compensation				6,467.11
---------------------------	--	--	--	----------

270 Group Insurance – Self-Insurance				404,281.23
--------------------------------------	--	--	--	------------

Total Personnel Services – Employee Benefits				\$825,880.17
---	--	--	--	---------------------

400 Purchased Property Services

410 Cleaning Services				37,488.00
-----------------------	--	--	--	-----------

420 Utility Services				57,455.50
----------------------	--	--	--	-----------

430 Repairs and Maintenance Services				243,215.22
--------------------------------------	--	--	--	------------

440 Rentals				42,530.00
-------------	--	--	--	-----------

Total Purchased Property Services				\$380,688.72
--	--	--	--	---------------------

500 Other Purchased Services

521 Fire Insurance				82,904.00
--------------------	--	--	--	-----------

522 Automotive Liability Insurance				8,905.00
------------------------------------	--	--	--	----------

523 General Property and Liability Insurance				10,872.00
--	--	--	--	-----------

529 Other Insurance				981.27
---------------------	--	--	--	--------

530 Communications				113,268.73
--------------------	--	--	--	------------

580 Travel				155.42
------------	--	--	--	--------

Total Other Purchased Services				\$217,086.42
---------------------------------------	--	--	--	---------------------

600 Supplies

610 General Supplies	67,476.92	116,167.50	10,748.34	194,392.76
----------------------	-----------	------------	-----------	------------

620 Energy				565,684.86
------------	--	--	--	------------

Total Supplies	\$67,476.92	\$116,167.50	\$10,748.34	\$760,077.62
-----------------------	--------------------	---------------------	--------------------	---------------------

700 Property

752 Capital Equipment – Original and Additional				863.17
---	--	--	--	--------

Total Property				\$863.17
-----------------------	--	--	--	-----------------

800 Other Objects

890 Miscellaneous Expenditures				3,265.50
--------------------------------	--	--	--	----------

Total Other Objects				\$3,265.50
----------------------------	--	--	--	-------------------

Total 2620 Operation of Buildings Services	\$67,476.92	\$116,167.50	\$10,748.34	\$3,195,059.77
---	--------------------	---------------------	--------------------	-----------------------

General Fund (10)

2660 Safety and Security Services

Elementary

Secondary

Federal

Total

300 Purchased Professional and Technical Services

322 Professional Educational Services – Ius

1,400.00

350 Security / Safety Services

65,188.85

390 Other Purchased Professional and Technical Services

12,609.61

Total Purchased Professional and Technical Services

\$79,198.46

600 Supplies

610 General Supplies

728.89

728.89

Total Supplies

\$728.89

\$728.89

700 Property

766 Capitalized Technology Equipment – Replacement

13,346.22

Total Property

\$13,346.22

Total 2660 Safety and Security Services

\$728.89

\$93,273.57

General Fund (10)

2700 Student Transportation Services

Elementary Secondary Federal Total

100 Personnel Services – Salaries
100 Personnel Services – Salaries 59,622.74

Total Personnel Services – Salaries \$59,622.74

200 Personnel Services – Employee Benefits

210 Group Insurance – Contracted Provider 88.20
220 Social Security Contributions 4,404.07
230 PSERS Retirement Contributions 20,431.20
260 Workers' Compensation 382.83
270 Group Insurance – Self-Insurance 14,956.88
299 All Other Employee Benefits 1,318.20

Total Personnel Services – Employee Benefits \$41,581.38

400 Purchased Property Services

430 Repairs and Maintenance Services 2,686.67

Total Purchased Property Services \$2,686.67

500 Other Purchased Services

513 Contracted Carriers 2,028,754.73
519 Student Transportation Services From Other Sources 4,960.60
580 Travel 230.80

Total Other Purchased Services \$2,033,946.13

600 Supplies

610 General Supplies 18,056.25
630 Food 188.00
650 Supplies & Fees – Technology Related 1,225.00

Total Supplies \$19,469.25

700 Property

752 Capital Equipment – Original and Additional 1,150.80
766 Capitalized Technology Equipment – Replacement 1,310.00

Total Property \$2,460.80

800 Other Objects

810 Dues and Fees 219.00

Total Other Objects \$219.00

Total 2700 Student Transportation Services \$2,159,985.97

General Fund (10)

2710 Supervision of Student Transportation Services

Elementary Secondary Federal Total

100 Personnel Services – Salaries				
100 Personnel Services – Salaries				59,622.74
Total Personnel Services – Salaries				\$59,622.74
200 Personnel Services – Employee Benefits				
210 Group Insurance – Contracted Provider				88.20
220 Social Security Contributions				4,404.07
230 PSERS Retirement Contributions				20,431.20
260 Workers' Compensation				382.83
270 Group Insurance – Self-Insurance				14,956.88
299 All Other Employee Benefits				1,318.20
Total Personnel Services – Employee Benefits				\$41,581.38
400 Purchased Property Services				
430 Repairs and Maintenance Services				2,686.67
Total Purchased Property Services				\$2,686.67
500 Other Purchased Services				
580 Travel				230.80
Total Other Purchased Services				\$230.80
600 Supplies				
610 General Supplies				18,056.25
630 Food				188.00
650 Supplies & Fees – Technology Related				1,225.00
Total Supplies				\$19,469.25
700 Property				
752 Capital Equipment – Original and Additional				1,150.80
766 Capitalized Technology Equipment – Replacement				1,310.00
Total Property				\$2,460.80
800 Other Objects				
810 Dues and Fees				219.00
Total Other Objects				\$219.00
Total 2710 Supervision of Student Transportation Services				\$126,270.64

General Fund (10)

2711 Supervision of Student Transportation Services – Head of Component

Elementary Secondary Federal Total

100 Personnel Services – Salaries				
100 Personnel Services – Salaries				59,622.74
Total Personnel Services – Salaries				\$59,622.74
200 Personnel Services – Employee Benefits				
210 Group Insurance – Contracted Provider				88.20
220 Social Security Contributions				4,404.07
230 PSERS Retirement Contributions				20,431.20
260 Workers' Compensation				382.83
270 Group Insurance – Self-Insurance				14,956.88
299 All Other Employee Benefits				1,318.20
Total Personnel Services – Employee Benefits				\$41,581.38
400 Purchased Property Services				
430 Repairs and Maintenance Services				2,686.67
Total Purchased Property Services				\$2,686.67
500 Other Purchased Services				
580 Travel				230.80
Total Other Purchased Services				\$230.80
600 Supplies				
610 General Supplies				18,056.25
630 Food				188.00
650 Supplies & Fees – Technology Related				1,225.00
Total Supplies				\$19,469.25
700 Property				
752 Capital Equipment – Original and Additional				1,150.80
766 Capitalized Technology Equipment – Replacement				1,310.00
Total Property				\$2,460.80
800 Other Objects				
810 Dues and Fees				219.00
Total Other Objects				\$219.00
Total 2711 Supervision of Student Transportation Services – Head of Component				\$126,270.64

LEA : 113361303 Cocalico SD

Printed 11/12/2020 2:04:00 PM

General Fund (10)

2720 Vehicle Operation Services

Elementary

Secondary

Federal

Total

500 Other Purchased Services

513 Contracted Carriers

1,908,403.00

519 Student Transportation Services From Other Sources

4,960.60

Total Other Purchased Services

\$1,913,363.60

Total 2720 Vehicle Operation Services

\$1,913,363.60

LEA : 113361303 Cocalico SD

Printed 11/12/2020 2:04:00 PM

General Fund (10)

2750 Nonpublic Transportation

Elementary

Secondary

Federal

Total

500 Other Purchased Services

513 Contracted Carriers

120,351.73

Total Other Purchased Services

\$120,351.73

Total 2750 Nonpublic Transportation

\$120,351.73

General Fund (10)

2800 Support Services – Central

Elementary Secondary Federal Total

100	<u>Personnel Services – Salaries</u>				
	100 Personnel Services – Salaries				604,460.13
Total Personnel Services – Salaries					\$604,460.13
200	<u>Personnel Services – Employee Benefits</u>				
	210 Group Insurance – Contracted Provider				680.40
	220 Social Security Contributions				44,960.24
	230 PSERS Retirement Contributions				200,654.28
	240 Tuition Reimbursement				21,976.30
	250 Unemployment Compensation				622.53
	260 Workers' Compensation				3,881.18
	270 Group Insurance – Self-Insurance				134,760.40
	299 All Other Employee Benefits				11,528.01
Total Personnel Services – Employee Benefits					\$419,063.34
300	<u>Purchased Professional and Technical Services</u>				
	322 Professional Educational Services – Ius				42,911.95
	330 Other Professional Services				4,408.00
	340 Technical Services				81,955.75
	360 Employee Training and Development Services				15,486.93
	390 Other Purchased Professional and Technical Services				3,265.50
Total Purchased Professional and Technical Services					\$148,028.13
400	<u>Purchased Property Services</u>				
	430 Repairs and Maintenance Services				1,003.74
Total Purchased Property Services					\$1,003.74
500	<u>Other Purchased Services</u>				
	530 Communications				2,802.15
	549 Other Advertising/Public Relations				3,923.61
	550 Printing and Binding				26,768.18
	580 Travel				14,610.13
Total Other Purchased Services					\$48,104.07
600	<u>Supplies</u>				
	610 General Supplies				1,889.83
	630 Food				415.27
	650 Supplies & Fees – Technology Related				130,763.24
Total Supplies					\$133,068.34
700	<u>Property</u>				
	766 Capitalized Technology Equipment – Replacement				9,781.00
Total Property					\$9,781.00
800	<u>Other Objects</u>				
	810 Dues and Fees				864.33
Total Other Objects					\$864.33
Total 2800 Support Services – Central					\$1,364,373.08

General Fund (10)

2810 Planning, Research, Development and Evaluation Services

Elementary

Secondary

Federal

Total

100 Personnel Services – Salaries				
100 Personnel Services – Salaries				432,316.82
Total Personnel Services – Salaries				\$432,316.82
200 Personnel Services – Employee Benefits				
210 Group Insurance – Contracted Provider				504.00
220 Social Security Contributions				31,949.44
230 PSERS Retirement Contributions				145,147.39
250 Unemployment Compensation				622.53
260 Workers' Compensation				2,775.86
270 Group Insurance – Self-Insurance				104,813.65
299 All Other Employee Benefits				7,685.34
Total Personnel Services – Employee Benefits				\$293,498.21
300 Purchased Professional and Technical Services				
322 Professional Educational Services – Ius				42,911.95
340 Technical Services				81,955.75
Total Purchased Professional and Technical Services				\$124,867.70
400 Purchased Property Services				
430 Repairs and Maintenance Services				1,003.74
Total Purchased Property Services				\$1,003.74
500 Other Purchased Services				
580 Travel				1,715.92
Total Other Purchased Services				\$1,715.92
600 Supplies				
610 General Supplies				582.09
630 Food				26.75
650 Supplies & Fees – Technology Related				124,806.48
Total Supplies				\$125,415.32
700 Property				
766 Capitalized Technology Equipment – Replacement				8,471.00
Total Property				\$8,471.00
800 Other Objects				
810 Dues and Fees				247.00
Total Other Objects				\$247.00
Total 2810 Planning, Research, Development and Evaluation Services				\$987,535.71

LEA : 113361303 Cocalico SD

Printed 11/12/2020 2:04:00 PM

General Fund (10)

2820 Information Services

Elementary

Secondary

Federal

Total

500 Other Purchased Services

530 Communications

2,802.15

550 Printing and Binding

26,768.18

Total Other Purchased Services

\$29,570.33

Total 2820 Information Services

\$29,570.33

LEA : 113361303 Cocalico SD

Printed 11/12/2020 2:04:00 PM

General Fund (10)

2823 Public Information Services

Elementary

Secondary

Federal

Total

500 Other Purchased Services

530 Communications

2,802.15

550 Printing and Binding

26,768.18

Total Other Purchased Services

\$29,570.33

Total 2823 Public Information Services

\$29,570.33

General Fund (10)

2830 Staff Services

Elementary Secondary Federal Total

100 Personnel Services – Salaries				
100 Personnel Services – Salaries				172,143.31
Total Personnel Services – Salaries				\$172,143.31
200 Personnel Services – Employee Benefits				
210 Group Insurance – Contracted Provider				176.40
220 Social Security Contributions				13,010.80
230 PSERS Retirement Contributions				55,506.89
240 Tuition Reimbursement				21,976.30
260 Workers' Compensation				1,105.32
270 Group Insurance – Self-Insurance				29,946.75
299 All Other Employee Benefits				3,842.67
Total Personnel Services – Employee Benefits				\$125,565.13
300 Purchased Professional and Technical Services				
330 Other Professional Services				4,408.00
360 Employee Training and Development Services				15,486.93
390 Other Purchased Professional and Technical Services				3,265.50
Total Purchased Professional and Technical Services				\$23,160.43
500 Other Purchased Services				
549 Other Advertising/Public Relations				3,923.61
580 Travel				12,894.21
Total Other Purchased Services				\$16,817.82
600 Supplies				
610 General Supplies				1,307.74
630 Food				388.52
650 Supplies & Fees – Technology Related				5,956.76
Total Supplies				\$7,653.02
700 Property				
766 Capitalized Technology Equipment– Replacement				1,310.00
Total Property				\$1,310.00
800 Other Objects				
810 Dues and Fees				617.33
Total Other Objects				\$617.33
Total 2830 Staff Services				\$347,267.04

General Fund (10)

2831 Supervision of Staff Services

Elementary

Secondary

Federal

Total

100 Personnel Services – Salaries

100 Personnel Services – Salaries

161,970.81

Total Personnel Services – Salaries

\$161,970.81

200 Personnel Services – Employee Benefits

210 Group Insurance – Contracted Provider

176.40

220 Social Security Contributions

12,232.61

230 PSERS Retirement Contributions

55,506.89

260 Workers' Compensation

1,040.00

270 Group Insurance – Self-Insurance

29,946.75

299 All Other Employee Benefits

3,842.67

Total Personnel Services – Employee Benefits

\$102,745.32

300 Purchased Professional and Technical Services

390 Other Purchased Professional and Technical Services

3,265.50

Total Purchased Professional and Technical Services

\$3,265.50

500 Other Purchased Services

549 Other Advertising/Public Relations

3,923.61

580 Travel

48.60

Total Other Purchased Services

\$3,972.21

600 Supplies

610 General Supplies

1,307.74

630 Food

388.52

650 Supplies & Fees – Technology Related

5,956.76

Total Supplies

\$7,653.02

700 Property

766 Capitalized Technology Equipment – Replacement

1,310.00

Total Property

\$1,310.00

800 Other Objects

810 Dues and Fees

617.33

Total Other Objects

\$617.33

Total 2831 Supervision of Staff Services

\$281,534.19

General Fund (10)

	<u>Elementary</u>	<u>Secondary</u>	<u>Federal</u>	<u>Total</u>
2834 Staff Development Services – Non-Instructional, Certified Staff Only				
200 Personnel Services – Employee Benefits				
240 Tuition Reimbursement				21,976.30
Total Personnel Services – Employee Benefits				\$21,976.30
300 Purchased Professional and Technical Services				
360 Employee Training and Development Services				14,299.70
Total Purchased Professional and Technical Services				\$14,299.70
500 Other Purchased Services				
580 Travel				12,333.98
Total Other Purchased Services				\$12,333.98
Total 2834 Staff Development Services – Non-Instructional, Certified Staff Only				\$48,609.98

LEA : 113361303 Cocalico SD

Printed 11/12/2020 2:04:00 PM

General Fund (10)

2835 Health Services

Elementary

Secondary

Federal

Total

300 Purchased Professional and Technical Services

330 Other Professional Services

4,408.00

Total Purchased Professional and Technical Services

\$4,408.00

Total 2835 Health Services

\$4,408.00

General Fund (10)

2836 Staff Development Services – Non-Instructional, Non-Certified Staff Only

Elementary

Secondary

Federal

Total

100 Personnel Services – Salaries

100 Personnel Services – Salaries

10,172.50

Total Personnel Services – Salaries

\$10,172.50

200 Personnel Services – Employee Benefits

220 Social Security Contributions

778.19

260 Workers' Compensation

65.32

Total Personnel Services – Employee Benefits

\$843.51

300 Purchased Professional and Technical Services

360 Employee Training and Development Services

1,187.23

Total Purchased Professional and Technical Services

\$1,187.23

500 Other Purchased Services

580 Travel

511.63

Total Other Purchased Services

\$511.63

Total 2836 Staff Development Services – Non-Instructional, Non-Certified Staff Only

\$12,714.87

LEA : 113361303 Cocalico SD

Printed 11/12/2020 2:04:00 PM

General Fund (10)

2900 Other Support Services

Elementary

Secondary

Federal

Total

500 Other Purchased Services

595 IU Payments By Withholding

23,624.87

Total Other Purchased Services

\$23,624.87

Total 2900 Other Support Services

\$23,624.87

General Fund (10)

2910 Support Services Not Listed Elsewhere In the 2000 Series

Elementary

Secondary

Federal

Total

500 Other Purchased Services

595 IU Payments By Withholding

23,624.87

Total Other Purchased Services

\$23,624.87

Total 2910 Support Services Not Listed Elsewhere In the 2000 Series

\$23,624.87

General Fund (10)

3000 Operation of Non-Instructional Services

Total

100 Personnel Services – Salaries

100 Personnel Services – Salaries 566,596.95

Total Personnel Services – Salaries

\$566,596.95

200 Personnel Services – Employee Benefits

210 Group Insurance – Contracted Provider 339.15

220 Social Security Contributions 42,757.84

230 PSERS Retirement Contributions 177,565.15

250 Unemployment Compensation 3,218.25

260 Workers' Compensation 3,638.05

270 Group Insurance – Self-Insurance 13,213.29

291 Other Retirement Plans 227,651.82

299 All Other Employee Benefits 1,610.34

Total Personnel Services – Employee Benefits

\$469,993.89

300 Purchased Professional and Technical Services

329 Professional Educational Services – Other 11,959.24

330 Other Professional Services 77,696.05

390 Other Purchased Professional and Technical Services 13,246.16

Total Purchased Professional and Technical Services

\$102,901.45

400 Purchased Property Services

430 Repairs and Maintenance Services 10,341.86

Total Purchased Property Services

\$10,341.86

500 Other Purchased Services

510 Student Transportation Services 54,592.34

520 Insurance – General 31,955.00

530 Communications 1,228.37

550 Printing and Binding 215.00

580 Travel 3,094.31

Total Other Purchased Services

\$91,085.02

600 Supplies

610 General Supplies 59,152.90

630 Food 172.75

650 Supplies & Fees – Technology Related 3,704.00

Total Supplies

\$63,029.65

800 Other Objects

810 Dues and Fees 3,832.19

890 Miscellaneous Expenditures 9,420.50

Total Other Objects

\$13,252.69

Total 3000 Operation of Non-Instructional Services

\$1,317,201.51

General Fund (10)

3200 Student Activities

Elementary Secondary Federal Total

100	<u>Personnel Services – Salaries</u>				
	100 Personnel Services – Salaries				554,264.45
Total Personnel Services – Salaries					\$554,264.45
200	<u>Personnel Services – Employee Benefits</u>				
	210 Group Insurance – Contracted Provider				339.15
	220 Social Security Contributions				41,856.45
	230 PSERS Retirement Contributions				173,439.26
	250 Unemployment Compensation				3,218.25
	260 Workers' Compensation				3,558.86
	270 Group Insurance – Self-Insurance				13,213.29
	291 Other Retirement Plans				227,651.82
	299 All Other Employee Benefits				1,610.34
Total Personnel Services – Employee Benefits					\$464,887.42
300	<u>Purchased Professional and Technical Services</u>				
	329 Professional Educational Services – Other				11,959.24
	330 Other Professional Services				77,696.05
	390 Other Purchased Professional and Technical Services				13,246.16
Total Purchased Professional and Technical Services					\$102,901.45
400	<u>Purchased Property Services</u>				
	430 Repairs and Maintenance Services				10,341.86
Total Purchased Property Services					\$10,341.86
500	<u>Other Purchased Services</u>				
	510 Student Transportation Services				54,592.34
	520 Insurance – General				31,955.00
	530 Communications				485.17
	550 Printing and Binding				215.00
	580 Travel				3,094.31
Total Other Purchased Services					\$90,341.82
600	<u>Supplies</u>				
	610 General Supplies				58,378.97
	630 Food				172.75
	650 Supplies & Fees – Technology Related				3,704.00
Total Supplies					\$62,255.72
800	<u>Other Objects</u>				
	810 Dues and Fees				3,832.19
	890 Miscellaneous Expenditures				9,420.50
Total Other Objects					\$13,252.69
Total 3200 Student Activities					\$1,298,245.41

General Fund (10)

	<u>Elementary</u>	<u>Secondary</u>	<u>Federal</u>	<u>Total</u>
3300 Community Services				
100 Personnel Services – Salaries				
100 Personnel Services – Salaries			1,047.50	12,332.50
Total Personnel Services – Salaries			\$1,047.50	\$12,332.50
200 Personnel Services – Employee Benefits				
220 Social Security Contributions			74.66	901.39
230 PSERS Retirement Contributions			179.60	4,125.89
260 Workers’ Compensation			6.73	79.19
Total Personnel Services – Employee Benefits			\$260.99	\$5,106.47
500 Other Purchased Services				
530 Communications				743.20
Total Other Purchased Services				\$743.20
600 Supplies				
610 General Supplies			773.93	773.93
Total Supplies			\$773.93	\$773.93
Total 3300 Community Services			\$2,082.42	\$18,956.10

General Fund (10)

5000 Other Expenditures and Financing Uses

Total

800 Other Objects

830 Interest	5,584.50
880 Refunds of Prior Years' Receipts	6,236.10

Total Other Objects	\$11,820.60
----------------------------	--------------------

900 Other Uses of Funds

910 Redemption of Principal	467,090.09
932 Capital Reserve Fund Transfers Applicable To Fund 32	5,000,474.46
939 Other Fund Transfers	1,202,214.98

Total Other Uses of Funds	\$6,669,779.53
----------------------------------	-----------------------

Total 5000 Other Expenditures and Financing Uses	\$6,681,600.13
---	-----------------------

General Fund (10)

5100 Debt Service / Other Expenditures and Financing Uses

Elementary

Secondary

Federal

Total

800 Other Objects

830 Interest 5,584.50

880 Refunds of Prior Years' Receipts 6,236.10

Total Other Objects \$11,820.60

900 Other Uses of Funds

910 Redemption of Principal 467,090.09

Total Other Uses of Funds \$467,090.09

Total 5100 Debt Service / Other Expenditures and Financing Uses \$478,910.69

LEA : 113361303 Cocalico SD

Printed 11/12/2020 2:04:20 PM

General Fund (10)

	<u>Elementary</u>	<u>Secondary</u>	<u>Federal</u>	<u>Total</u>
5110 Debt Service				
800 Other Objects				
830 Interest				5,584.50
Total Other Objects				\$5,584.50
900 Other Uses of Funds				
910 Redemption of Principal				467,090.09
Total Other Uses of Funds				\$467,090.09
Total 5110 Debt Service				\$472,674.59

LEA : 113361303 Cocalico SD

Printed 11/12/2020 2:04:20 PM

General Fund (10)

	<u>Elementary</u>	<u>Secondary</u>	<u>Federal</u>	<u>Total</u>
5130 Refund of Prior Year Revenues / Receipts				
800 <u>Other Objects</u>				
880 Refunds of Prior Years' Receipts				6,236.10
Total Other Objects				\$6,236.10
Total 5130 Refund of Prior Year Revenues / Receipts				\$6,236.10

LEA : 113361303 Cocalico SD

Printed 11/12/2020 2:04:20 PM

General Fund (10)

	<u>Elementary</u>	<u>Secondary</u>	<u>Federal</u>	<u>Total</u>
5200 Interfund Transfers – Out				
900 Other Uses of Funds				
932 Capital Reserve Fund Transfers Applicable To Fund 32				5,000,474.46
939 Other Fund Transfers				1,202,214.98
Total Other Uses of Funds				\$6,202,689.44
Total 5200 Interfund Transfers – Out				\$6,202,689.44

LEA : 113361303 Cocalico SD

Printed 11/12/2020 2:04:20 PM

General Fund (10)

5230 Capital Projects Fund Transfers

Elementary

Secondary

Federal

Total

900 Other Uses of Funds

932 Capital Reserve Fund Transfers Applicable To Fund 32

5,000,474.46

Total Other Uses of Funds

\$5,000,474.46

Total 5230 Capital Projects Fund Transfers

\$5,000,474.46

LEA : 113361303 Cocalico SD

Printed 11/12/2020 2:04:20 PM

General Fund (10)

5240 Debt Service Fund Transfers

Elementary

Secondary

Federal

Total

900 Other Uses of Funds

939 Other Fund Transfers

1,202,214.98

Total Other Uses of Funds

\$1,202,214.98

Total 5240 Debt Service Fund Transfers

\$1,202,214.98

LEA : 113361303 Cocalico SD

Printed 11/12/2020 2:04:04 PM

Capital Reserve Fund - § 1431 (32)

2000 Support Services

300 Purchased Professional and Technical Services

340 Technical Services 6,078.60

Total Purchased Professional and Technical Services \$6,078.60

400 Purchased Property Services

430 Repairs and Maintenance Services 901,373.67

490 Other Purchased Property Services 1,340.00

Total Purchased Property Services \$902,713.67

500 Other Purchased Services

549 Other Advertising/Public Relations 1,615.92

Total Other Purchased Services \$1,615.92

600 Supplies

610 General Supplies 48,212.47

Total Supplies \$48,212.47

700 Property

752 Capital Equipment – Original and Additional 77,234.80

756 Capitalized Technology Equipment – Original 60,514.11

762 Capitalized Equipment - Replacement 5,149.90

766 Capitalized Technology Equipment – Replacement 7,676.22

Total Property \$150,575.03

Total 2000 Support Services \$1,109,195.69

Capital Reserve Fund - § 1431 (32)

2600 Operation and Maintenance of Plant Services

Elementary

Secondary

Federal

Total

400 Purchased Property Services

430 Repairs and Maintenance Services

901,373.67

490 Other Purchased Property Services

1,340.00

Total Purchased Property Services

\$902,713.67

500 Other Purchased Services

549 Other Advertising/Public Relations

1,615.92

Total Other Purchased Services

\$1,615.92

600 Supplies

610 General Supplies

19,761.99

19,762.00

39,523.99

Total Supplies

\$19,761.99

\$19,762.00

\$39,523.99

700 Property

752 Capital Equipment – Original and Additional

77,234.80

762 Capitalized Equipment - Replacement

5,149.90

Total Property

\$82,384.70

Total 2600 Operation and Maintenance of Plant Services

\$19,761.99

\$19,762.00

\$1,026,238.28

LEA : 113361303 Cocalico SD

Printed 11/12/2020 2:04:04 PM

Capital Reserve Fund - § 1431 (32)

	<u>Elementary</u>	<u>Secondary</u>	<u>Federal</u>	<u>Total</u>
2620 Operation of Buildings Services				
400 <u>Purchased Property Services</u>				
430 Repairs and Maintenance Services				901,373.67
490 Other Purchased Property Services				1,340.00
Total Purchased Property Services				\$902,713.67
500 <u>Other Purchased Services</u>				
549 Other Advertising/Public Relations				1,615.92
Total Other Purchased Services				\$1,615.92
600 <u>Supplies</u>				
610 General Supplies	19,761.99	19,762.00		39,523.99
Total Supplies	\$19,761.99	\$19,762.00		\$39,523.99
700 <u>Property</u>				
752 Capital Equipment – Original and Additional				77,234.80
762 Capitalized Equipment - Replacement				5,149.90
Total Property				\$82,384.70
Total 2620 Operation of Buildings Services	\$19,761.99	\$19,762.00		\$1,026,238.28

LEA : 113361303 Cocalico SD

Printed 11/12/2020 2:04:04 PM

Capital Reserve Fund - § 1431 (32)

2800 Support Services – Central

Elementary

Secondary

Federal

Total

300 Purchased Professional and Technical Services

340 Technical Services

6,078.60

Total Purchased Professional and Technical Services

\$6,078.60

600 Supplies

610 General Supplies

8,688.48

Total Supplies

\$8,688.48

700 Property

756 Capitalized Technology Equipment – Original

60,514.11

766 Capitalized Technology Equipment – Replacement

7,676.22

Total Property

\$68,190.33

Total 2800 Support Services – Central

\$82,957.41

LEA : 113361303 Cocalico SD

Printed 11/12/2020 2:04:04 PM

Capital Reserve Fund - § 1431 (32)

	<u>Elementary</u>	<u>Secondary</u>	<u>Federal</u>	<u>Total</u>
2810 Planning, Research, Development and Evaluation Services				
300 <u>Purchased Professional and Technical Services</u>				
340 Technical Services				6,078.60
Total Purchased Professional and Technical Services				\$6,078.60
600 <u>Supplies</u>				
610 General Supplies				8,688.48
Total Supplies				\$8,688.48
700 <u>Property</u>				
756 Capitalized Technology Equipment – Original				60,514.11
766 Capitalized Technology Equipment – Replacement				7,676.22
Total Property				\$68,190.33
Total 2810 Planning, Research, Development and Evaluation Services				\$82,957.41

LEA : 113361303 Cocalico SD

Printed 11/12/2020 2:04:13 PM

Capital Reserve Fund - § 1431 (32)

4000 Facilities Acquisition, Construction and Improvement Services

Total

300 Purchased Professional and Technical Services

330 Other Professional Services 599,676.94

Total Purchased Professional and Technical Services \$599,676.94

400 Purchased Property Services

450 Construction Services 4,263,136.85

490 Other Purchased Property Services 23,995.75

Total Purchased Property Services \$4,287,132.60

500 Other Purchased Services

549 Other Advertising/Public Relations 1,955.46

Total Other Purchased Services \$1,955.46

Total 4000 Facilities Acquisition, Construction and Improvement Services \$4,888,765.00

LEA : 113361303 Cocalico SD

Printed 11/12/2020 2:04:13 PM

Capital Reserve Fund - § 1431 (32)

4100 Site Acquisition Services – Original and Additional

Elementary

Secondary

Federal

Total

500 Other Purchased Services

549 Other Advertising/Public Relations

1,955.46

Total Other Purchased Services

\$1,955.46

Total 4100 Site Acquisition Services – Original and Additional

\$1,955.46

LEA : 113361303 Cocalico SD

Printed 11/12/2020 2:04:13 PM

Capital Reserve Fund - § 1431 (32)

4400 Architecture and Engineering Services / Educational Specifications – Improvements

Elementary

Secondary

Federal

Total

300 Purchased Professional and Technical Services

330 Other Professional Services

599,676.94

Total Purchased Professional and Technical Services

\$599,676.94

Total 4400 Architecture and Engineering Services / Educational Specifications – Improvements

\$599,676.94

LEA : 113361303 Cocalico SD

Printed 11/12/2020 2:04:13 PM

Capital Reserve Fund - § 1431 (32)

4600 Existing Building Improvement Services

Elementary

Secondary

Federal

Total

400 Purchased Property Services

450 Construction Services

4,263,136.85

490 Other Purchased Property Services

23,995.75

Total Purchased Property Services

\$4,287,132.60

Total 4600 Existing Building Improvement Services

\$4,287,132.60

LEA : 113361303 Cocalico SD

Printed 11/12/2020 2:04:06 PM

Debt Service Fund (40)

2000 Support Services

800 Other Objects

890 Miscellaneous Expenditures

Total Other Objects

Total 2000 Support Services

Total

500.00

\$500.00

\$500.00

LEA : 113361303 Cocalico SD

Printed 11/12/2020 2:04:06 PM

Debt Service Fund (40)

2500 Support Services – Business

Elementary

Secondary

Federal

Total

800 Other Objects

890 Miscellaneous Expenditures

500.00

Total Other Objects

\$500.00

Total 2500 Support Services – Business

\$500.00

LEA : 113361303 Cocalico SD

Printed 11/12/2020 2:04:06 PM

Debt Service Fund (40)

2510 Fiscal Services

Elementary

Secondary

Federal

Total

800 Other Objects

890 Miscellaneous Expenditures

500.00

Total Other Objects

\$500.00

Total 2510 Fiscal Services

\$500.00

LEA : 113361303 Cocalico SD

Printed 11/12/2020 2:04:06 PM

Debt Service Fund (40)

2515 Financial Accounting Services

Elementary

Secondary

Federal

Total

800 Other Objects

890 Miscellaneous Expenditures

500.00

Total Other Objects				\$500.00
Total 2515 Financial Accounting Services				\$500.00

Debt Service Fund (40)

5000 Other Expenditures and Financing Uses

Total

800 Other Objects

830 Interest 41,714.98

Total Other Objects \$41,714.98

900 Other Uses of Funds

910 Redemption of Principal 1,160,000.00

Total Other Uses of Funds \$1,160,000.00

Total 5000 Other Expenditures and Financing Uses \$1,201,714.98

LEA : 113361303 Cocalico SD

Printed 11/12/2020 2:04:23 PM

Debt Service Fund (40)

5100 Debt Service / Other Expenditures and Financing Uses	<u>Elementary</u>	<u>Secondary</u>	<u>Federal</u>	<u>Total</u>
800 <u>Other Objects</u>				
830 Interest				41,714.98
Total Other Objects				\$41,714.98
900 <u>Other Uses of Funds</u>				
910 Redemption of Principal				1,160,000.00
Total Other Uses of Funds				\$1,160,000.00
Total 5100 Debt Service / Other Expenditures and Financing Uses				\$1,201,714.98

LEA : 113361303 Cocalico SD

Printed 11/12/2020 2:04:23 PM

Debt Service Fund (40)

	<u>Elementary</u>	<u>Secondary</u>	<u>Federal</u>	<u>Total</u>
5110 Debt Service				
800 Other Objects				
830 Interest				41,714.98
Total Other Objects				\$41,714.98
900 Other Uses of Funds				
910 Redemption of Principal				1,160,000.00
Total Other Uses of Funds				\$1,160,000.00
Total 5110 Debt Service				\$1,201,714.98

	<u>General Fund(10)</u>	<u>Student Sponsored Activity Fund(21)</u>	<u>Public Purpose Trust(27)</u>	<u>Other Compt Approved (28)</u>	<u>Athletic / Activity(29)</u>
1000 Instruction					
1100 Regular Programs - Elementary / Secondary	25,109,232.56				
1200 Special Programs - Elementary / Secondary	8,908,828.02				
1300 Vocational Education	1,120,362.68				
1400 Other Instructional Programs - Elementary / Secondary	189,703.17				
Total Instruction	\$35,328,126.43				
2000 Support Services					
2100 Support Services - Students	2,102,616.63				
2200 Support Services - Instructional Staff	2,466,892.60				
2300 Support Services - Administration	3,647,272.29				
2400 Support Services - Pupil Health	592,924.90				
2500 Support Services - Business	673,658.89				
2600 Operation and Maintenance of Plant Services	3,516,491.21				
2700 Student Transportation Services	2,159,985.97				
2800 Support Services - Central	1,364,373.08				
2900 Other Support Services	23,624.87				
Total Support Services	\$16,547,840.44				
3000 Operation of Non-Instructional Services					
3200 Student Activities	1,298,245.41				
3300 Community Services	18,956.10				
Total Operation of Non-Instructional Services	\$1,317,201.51				
4000 Facilities Acquisition, Construction and Improvement Services					
4100 Site Acquisition Services - Original and Additional					
4400 Architecture and Engineering Services / Educational Specifications - Improvements					
4600 Existing Building Improvement Services					
Total Facilities Acquisition, Construction and Improvement Services					
5000 Other Expenditures and Financing Uses					
5100 Debt Service / Other Expenditures and Financing Uses	478,910.69				
5200 Interfund Transfers - Out	6,202,689.44				
Total Other Expenditures and Financing Uses	\$6,681,600.13				
TOTAL ACTUAL EXPENDITURES & OTHER FINANCING USES	\$59,874,768.51				

	<u>Capital Reserve (690.1850)(31)</u>	<u>Capital Reserve (1431)(32)</u>	<u>Other Capital Projects Fund(39)</u>	<u>Debt Service(40)</u>	<u>Permanent(90)</u>
1000 Instruction					
1100 Regular Programs - Elementary / Secondary					
1200 Special Programs - Elementary / Secondary					
1300 Vocational Education					
1400 Other Instructional Programs - Elementary / Secondary					
Total Instruction					
2000 Support Services					
2100 Support Services - Students					
2200 Support Services - Instructional Staff					
2300 Support Services - Administration					
2400 Support Services - Pupil Health					
2500 Support Services - Business				500.00	
2600 Operation and Maintenance of Plant Services		1,026,238.28			
2700 Student Transportation Services					
2800 Support Services - Central		82,957.41			
2900 Other Support Services					
Total Support Services		\$1,109,195.69		\$500.00	
3000 Operation of Non-Instructional Services					
3200 Student Activities					
3300 Community Services					
Total Operation of Non-Instructional Services					
4000 Facilities Acquisition, Construction and Improvement Services					
4100 Site Acquisition Services - Original and Additional		1,955.46			
4400 Architecture and Engineering Services / Educational Specifications - Improvements		599,676.94			
4600 Existing Building Improvement Services		4,287,132.60			
Total Facilities Acquisition, Construction and Improvement Services		\$4,888,765.00			
5000 Other Expenditures and Financing Uses					
5100 Debt Service / Other Expenditures and Financing Uses				1,201,714.98	
5200 Interfund Transfers - Out					
Total Other Expenditures and Financing Uses				\$1,201,714.98	
TOTAL ACTUAL EXPENDITURES & OTHER FINANCING USES		\$5,997,960.69		\$1,202,214.98	

Total

1000 Instruction	
1100 Regular Programs - Elementary / Secondary	25,109,232.56
1200 Special Programs - Elementary / Secondary	8,908,828.02
1300 Vocational Education	1,120,362.68
1400 Other Instructional Programs - Elementary / Secondary	189,703.17
Total Instruction	\$35,328,126.43
2000 Support Services	
2100 Support Services - Students	2,102,616.63
2200 Support Services - Instructional Staff	2,466,892.60
2300 Support Services - Administration	3,647,272.29
2400 Support Services - Pupil Health	592,924.90
2500 Support Services - Business	674,158.89
2600 Operation and Maintenance of Plant Services	4,542,729.49
2700 Student Transportation Services	2,159,985.97
2800 Support Services - Central	1,447,330.49
2900 Other Support Services	23,624.87
Total Support Services	\$17,657,536.13
3000 Operation of Non-Instructional Services	
3200 Student Activities	1,298,245.41
3300 Community Services	18,956.10
Total Operation of Non-Instructional Services	\$1,317,201.51
4000 Facilities Acquisition, Construction and Improvement Services	
4100 Site Acquisition Services - Original and Additional	1,955.46
4400 Architecture and Engineering Services / Educational Specifications - Improvements	599,676.94
4600 Existing Building Improvement Services	4,287,132.60
Total Facilities Acquisition, Construction and Improvement Services	\$4,888,765.00
5000 Other Expenditures and Financing Uses	
5100 Debt Service / Other Expenditures and Financing Uses	1,680,625.67
5200 Interfund Transfers - Out	6,202,689.44
Total Other Expenditures and Financing Uses	\$7,883,315.11
TOTAL ACTUAL EXPENDITURES & OTHER FINANCING USES	\$67,074,944.18

LEA : 113361303 Cocalico SD

Printed 11/12/2020 2:04:57 PM

PSERS Salary Data (Salary Data should relate to the General Fund only)

Amount Description	Amount
Total Salary Base for salaries subject to PSERS withholding	24,212,620.09
Total Federally Funded salaries subject to PSERS withholding	304,635.08
	<hr/>

Title I Expenditure Data

Amount Description	Amount
Expenditures Funded with Current Title I Funds	400,960.00
Expenditures Funded with Carry over Title I Funds	
	<hr/>
Total Title I Expenditure Data	\$400,960.00
	<hr/>

Benefits for Staff Relative to Collective Bargaining Agreements

	OBJECT	COVERED	NOT COVERED	TOTAL
10 General Fund				
	211 Medical Insurance			
	212 Dental Insurance			
	215 Eye Care Insurance			
	216 Prescription Insurance			
	271 Self-Insurance Medical Benefits	3,597,470.73	1,476,184.91	5,073,655.64
	272 Self-Insurance Dental Benefits	216,397.78	87,501.19	303,898.97
	275 Self-Insurance Eye Care Benefits	74,049.53	30,687.39	104,736.92
	276 Self-Insurance Prescription Benefits	1,032,233.02	464,693.93	1,496,926.95
	FUND TOTAL	\$4,920,151.06	\$2,059,067.42	\$6,979,218.48
50 Enterprise Fund				
	211 Medical Insurance			
	212 Dental Insurance			
	215 Eye Care Insurance			
	216 Prescription Insurance			
	271 Self-Insurance Medical Benefits		86,995.33	86,995.33
	272 Self-Insurance Dental Benefits		5,240.68	5,240.68
	275 Self-Insurance Eye Care Benefits		1,048.13	1,048.13
	276 Self-Insurance Prescription Benefits		11,529.51	11,529.51
	FUND TOTAL		\$104,813.65	\$104,813.65
60 Internal Service Fund	No Self Insurance data to report			
	211 Medical Insurance			
	212 Dental Insurance			
	215 Eye Care Insurance			
	216 Prescription Insurance			
	271 Self-Insurance Medical Benefits			
	272 Self-Insurance Dental Benefits			
	275 Self-Insurance Eye Care Benefits			
	276 Self-Insurance Prescription Benefits			
	FUND TOTAL			
Total of All Funds		\$4,920,151.06	\$2,163,881.07	\$7,084,032.13

LEA : 113361303 Cocalico SD

Printed 11/12/2020 2:05:09 PM

Function	Special Education (Prior Year)	Nonspecial Education (Prior Year)	Total (Prior Year)	Special Education (Current Year)	Nonspecial Education (Current Year)	Total (Current Year)
2120 Guidance Services		1,204,997.05	1,204,997.05		1,214,515.63	1,214,515.63
2140 Psychological Services	465,444.46		465,444.46	563,182.80		563,182.80
2150 Speech Pathology and Audiology Services						
2160 Social Work Services	238,111.61		238,111.61	237,648.95		237,648.95
2260 Instruction and Curriculum Development Services	365,205.30	364,334.39	729,539.69	369,730.87	270,336.64	640,067.51
2350 Legal and Accounting Services	2,670.27	17,319.00	19,989.27	12,252.96	20,657.50	32,910.46
2420 Medical Services		5,719.09	5,719.09		6,235.82	6,235.82
2440 Nursing Services		589,590.48	589,590.48		586,689.08	586,689.08
2700 Student Transportation Services	710,258.41	1,741,024.12	2,451,282.53	521,136.20	1,638,849.77	2,159,985.97
Total	\$1,781,690.05	\$3,922,984.13	\$5,704,674.18	\$1,703,951.78	\$3,737,284.44	\$5,441,236.22

(PRINCIPAL AMOUNTS ONLY)

GOVERNMENTAL FUNDS/ ACTIVITIES

	Short-Term Borrowing	General Obligation Bonds/Notes	Authority Building Obligations	Other Long-Term Debt	Other Post-Employment Benefits (OPEB)	Compensated Absences	Net Pension Liability	Total
1. Debt at Beginning of Fiscal Year		2,345,000.00		627,148.48	6,388,000.00	3,701,008.00	78,847,000.00	91,908,156.48
2. Additional Debt Incurred During Year				744,315.00	231,000.00	779,067.00	239,000.00	1,993,382.00
3. Retirements and Repayments		1,160,000.00		467,090.00		301,394.00		1,928,484.00
4. Debt at End of Fiscal Year		1,185,000.00		904,373.48	6,619,000.00	4,178,681.00	79,086,000.00	91,973,054.48
5. Accreted Interest at End Of Fiscal Year								
6. Total Debt and Accreted Interest		1,185,000.00		904,373.48	6,619,000.00	4,178,681.00	79,086,000.00	91,973,054.48
7. Current Portion P&I - Due within 1 year		1,206,082.00		265,405.00				1,471,487.00
8. Interest Paid during current fiscal year		41,715.00		5,584.50				47,299.50

(PRINCIPAL AMOUNTS ONLY)

PROPRIETARY FUNDS

	Short-Term Borrowing	General Obligation Bonds/Notes	Authority Building Obligations	Other Long-Term Debt	Other Post-Employment Benefits (OPEB)	Compensated Absences	Net Pension Liability	Total
1. Debt at Beginning of Fiscal Year					130,000.00	81,034.00	1,609,000.00	1,820,034.00
2. Additional Debt Incurred During Year					5,000.00		5,000.00	10,000.00
3. Retirements and Repayments						10,185.00		10,185.00
4. Debt at End of Fiscal Year					135,000.00	70,849.00	1,614,000.00	1,819,849.00
5. Accreted Interest at End Of Fiscal Year								
6. Total Debt and Accreted Interest					135,000.00	70,849.00	1,614,000.00	1,819,849.00
7. Current Portion P&I - Due within 1 year								
8. Interest Paid during current fiscal year								

Total Principal and Interest Payments Made by Your School - All Funds

Function	Fund		Principal (910)	Principal (920)	Interest (830)	Total (Principal +Interest)	Misc Other Uses (990)
5110	10	General Fund	467,090.09		5,584.50	472,674.59	
5110	20	Special Revenue Funds					
5110	30	Capital Projects Funds					
5110	40	Debt Service Fund	1,160,000.00		41,714.98	1,201,714.98	
5110	90	Permanent Fund					
5120	10	General Fund					
5120	20	Special Revenue Funds					
5120	30	Capital Projects Funds					
5120	40	Debt Service Fund					

Total Debt Payments - Governmental Funds			\$1,627,090.09		\$47,299.48	\$1,674,389.57	
---	--	--	-----------------------	--	--------------------	-----------------------	--

Function	Fund		Principal (910)	Principal (920)	Interest (830)	Total (Principal +Interest)
5110	50	Enterprise Fund				
5110	60	Internal Service Fund				
5120	50	Enterprise Fund				
5120	60	Internal Service Fund				

Total Debt Payments - Proprietary Funds						
--	--	--	--	--	--	--

Debt Details
Governmental Funds/ Activities

Debt Category	Debt Issue Date (MM/YYYY)	Principal Amounts Only			Debt at End of Fiscal Year	Current Portion Due Within One Year (Principal and Interest)	Interest Paid During Fiscal Year
		Debt at Beginning of Fiscal Year	Additions	Reductions / Repayments			
General Obligation Bonds/Notes – CIB	04/2016	1,525,000.00		755,000.00	770,000.00	782,782.00	25,315.00
General Obligation Bonds/Notes – CIB	09/2014	820,000.00		405,000.00	415,000.00	423,300.00	16,400.00
Other Long Term Debt/Liabilities		627,148.48	744,315.00	467,090.00	904,373.48	265,405.00	5,584.50
Compensated Absences		3,701,008.00	779,067.00	301,394.00	4,178,681.00		
Other Post-Employment Benefits (OPEB)		6,388,000.00	231,000.00		6,619,000.00		
Net Pension Liability		78,847,000.00	239,000.00		79,086,000.00		
Totals for Debt Entered:		\$91,908,156.48	\$1,993,382.00	\$1,928,484.00	\$91,973,054.48	\$1,471,487.00	\$47,299.50

Bond Details
Proprietary Funds

Debt Category	Debt Issue Date (MM/YYYY)	Principal Amounts Only			Debt at End of Fiscal Year	Current Portion Due Within One Year (Principal and Interest)	Interest Paid During Fiscal Year
		Debt at Beginning of Fiscal Year	Additions	Reductions / Repayments			
Compensated Absences		81,034.00		10,185.00	70,849.00		
Other Post-Employment Benefits (OPEB)		130,000.00	5,000.00		135,000.00		
Net Pension Liability		1,609,000.00	5,000.00		1,614,000.00		
Totals for Debt Entered:		\$1,820,034.00	\$10,000.00	\$10,185.00	\$1,819,849.00		

General Fund (10)

Section 1: Tuition/Purchased Services as Reported within Expenditure Detail

	Amount
Tuition Reported in General Fund Expenditures 1000-560	2,862,432.82
Purchased Services in General Fund Expenditures 1000-594 and 1000-597	2,747.74
Section 1 Total	\$2,865,180.56

Section 2: Tuition Paid to Institution Types During Fiscal Year

	Tuition Paid For Nonspecial Education	Tuition Paid For Special Education	Total
1 1306 Institutions			
2 Institutionalized Children's Programs			
3 Juveniles Incarcerated in Adult Facilities			
4 Residential Treatment Facilities	3,173.02	15,100.63	18,273.65
5 Other Local Education Agencies	23,086.00	343,093.33	366,179.33
6 Brick and Mortar Charter Schools	17,390.46		17,390.46
7 Cyber Charter Schools	580,081.20	238,747.78	818,828.98
8 Career and Technology Centers	1,057,044.95		1,057,044.95
9 Approved Private Schools	47,796.68	506,142.93	553,939.61
10 PA Chartered Schools for the Deaf and Blind			
11 Private Residential Rehabilitative Institutions	1,241.99	16,964.91	18,206.90
12 Juvenile Detention Centers	15,316.68		15,316.68
13 Special Program Jointures			
14 Other Tuition Not Included Elsewhere In This Section			
Section 2 Total	\$1,745,130.98	\$1,120,049.58	\$2,865,180.56

LEA : 113361303 Cocalico SD

Printed 11/12/2020 2:05:36 PM

Food Service / Cafeteria Operations Fund (51)

3000 Operation of Non-Instructional Services

Total

100 Personnel Services – Salaries

100 Personnel Services – Salaries 530,907.00

Total Personnel Services – Salaries \$530,907.00

200 Personnel Services – Employee Benefits

210 Group Insurance – Contracted Provider 418.00

220 Social Security Contributions 39,810.00

230 PSERS Retirement Contributions 195,669.00

250 Unemployment Compensation 537.00

260 Workers' Compensation 3,473.00

270 Group Insurance – Self-Insurance 104,814.00

280 Other Post-Employment Benefits (OPEB) 1,000.00

299 All Other Employee Benefits 3,842.00

Total Personnel Services – Employee Benefits \$349,563.00

300 Purchased Professional and Technical Services

300 Purchased Professional and Technical Services 1,030.00

Total Purchased Professional and Technical Services \$1,030.00

400 Purchased Property Services

430 Repairs and Maintenance Services 2,067.00

Total Purchased Property Services \$2,067.00

500 Other Purchased Services

530 Communications 587.00

580 Travel 226.00

Total Other Purchased Services \$813.00

600 Supplies

610 General Supplies 44,832.00

630 Food 731,766.00

650 Supplies & Fees – Technology Related 6,516.00

Total Supplies \$783,114.00

700 Property

740 Depreciation 4,843.00

Total Property \$4,843.00

800 Other Objects

810 Dues and Fees 504.00

Total Other Objects \$504.00

Total 3000 Operation of Non-Instructional Services \$1,672,841.00

Food Service / Cafeteria Operations Fund (51)

	<u>Elementary</u>	<u>Secondary</u>	<u>Federal</u>	<u>Total</u>
3100 Food Services				
100 Personnel Services – Salaries				
100 Personnel Services – Salaries				530,907.00
Total Personnel Services – Salaries				\$530,907.00
200 Personnel Services – Employee Benefits				
210 Group Insurance – Contracted Provider				418.00
220 Social Security Contributions				39,810.00
230 PSERS Retirement Contributions				195,669.00
250 Unemployment Compensation				537.00
260 Workers' Compensation				3,473.00
270 Group Insurance – Self-Insurance				104,814.00
280 Other Post-Employment Benefits (OPEB)				1,000.00
299 All Other Employee Benefits				3,842.00
Total Personnel Services – Employee Benefits				\$349,563.00
300 Purchased Professional and Technical Services				
300 Purchased Professional and Technical Services				1,030.00
Total Purchased Professional and Technical Services				\$1,030.00
400 Purchased Property Services				
430 Repairs and Maintenance Services				2,067.00
Total Purchased Property Services				\$2,067.00
500 Other Purchased Services				
530 Communications				587.00
580 Travel				226.00
Total Other Purchased Services				\$813.00
600 Supplies				
610 General Supplies				44,832.00
630 Food				731,766.00
650 Supplies & Fees – Technology Related				6,516.00
Total Supplies				\$783,114.00
700 Property				
740 Depreciation				4,843.00
Total Property				\$4,843.00
800 Other Objects				
810 Dues and Fees				504.00
Total Other Objects				\$504.00
Total 3100 Food Services				\$1,672,841.00

Internal Service Fund (60)

2000 Support Services

Total

200 Personnel Services – Employee Benefits

270 Group Insurance – Self-Insurance

7,231,639.00

Total Personnel Services – Employee Benefits

\$7,231,639.00

800 Other Objects

810 Dues and Fees

628,197.00

Total Other Objects

\$628,197.00

Total 2000 Support Services

\$7,859,836.00

Internal Service Fund (60)

2800 Support Services – Central

Elementary

Secondary

Federal

Total

200 Personnel Services – Employee Benefits

270 Group Insurance – Self-Insurance

7,231,639.00

Total Personnel Services – Employee Benefits

\$7,231,639.00

800 Other Objects

810 Dues and Fees

628,197.00

Total Other Objects

\$628,197.00

Total 2800 Support Services – Central

\$7,859,836.00

Internal Service Fund (60)

2830 Staff Services

Elementary

Secondary

Federal

Total

200 Personnel Services – Employee Benefits

270 Group Insurance – Self-Insurance

7,231,639.00

Total Personnel Services – Employee Benefits

\$7,231,639.00

800 Other Objects

810 Dues and Fees

628,197.00

Total Other Objects

\$628,197.00

Total 2830 Staff Services

\$7,859,836.00

Internal Service Fund (60)

2835 Health Services

Elementary

Secondary

Federal

Total

200 Personnel Services – Employee Benefits

270 Group Insurance – Self-Insurance

7,231,639.00

Total Personnel Services – Employee Benefits

\$7,231,639.00

800 Other Objects

810 Dues and Fees

628,197.00

Total Other Objects

\$628,197.00

Total 2835 Health Services

\$7,859,836.00

	<u>Food Service(51)</u>	<u>Child Care Operations(52)</u>	<u>Other Enterprise(58)</u>	<u>Internal Service(60)</u>	<u>Total</u>
2000 Support Services					
2800 Support Services - Central				7,859,836.00	7,859,836.00
Total Support Services				\$7,859,836.00	\$7,859,836.00
3000 Operation of Non-Instructional Services					
3100 Food Services	1,672,841.00				1,672,841.00
Total Operation of Non-Instructional Services	\$1,672,841.00				\$1,672,841.00
TOTAL ACTUAL EXPENDITURES & OTHER FINANCING USES	\$1,672,841.00			\$7,859,836.00	\$9,532,677.00

LEA : 113361303 Cocalico SD

Printed 11/12/2020 2:05:52 PM

Fund	School	School Number	Local Personnel	Local Nonpersonnel	State Personnel	State Nonpersonnel	Federal Personnel	Federal Nonpersonnel	Total	Explanation
10	Adamstown El Sch	2510	3,635,963.96	554,343.59	1,528,757.58	233,076.28	164,587.49	36,959.97	6,153,688.87	
	Cocalico MS	6289	7,309,919.52	1,055,961.83	3,073,488.88	443,983.93		14,984.77	11,898,338.93	
	Cocalico SHS	6290	9,265,288.50	1,522,511.50	3,895,632.66	640,146.86	876.42	16,360.09	15,340,816.03	
	Denver El Sch	2506	4,343,348.40	646,214.88	1,826,180.58	271,703.97	161,580.97	24,530.85	7,273,559.65	
	Reamstown El Sch	5053	3,405,804.82	494,320.73	1,431,986.12	207,839.39	130,042.06	20,098.09	5,690,091.21	
Total			27,960,325.20	4,273,352.53	11,756,045.82	1,796,750.43	457,086.94	112,933.77	46,356,494.69	