

LEA Name : Cocalico SD
Address : 800 4th Street
Denver, PA 17517

County : Lancaster
AUN Number : 113361303
LEA Type : SD

Annual Financial Report
Accuracy Certification Statement
For Fiscal Year Ending
6/30/2019

Pennsylvania Department of Education
&
Office of Comptroller Operations

PDE-2056: Intermediate Unit
PDE-2057: School District, AVTS/CTC, Charter School,
and Special Program Jointure

CERTIFICATION: By signing this page I agree that the electronic data submitted is a complete and accurate statement of the financial operations and status of the local education agency for the fiscal year. It has been prepared in accordance with generally accepted accounting principles and established Commonwealth of PA reporting guidelines.



Chief School Administrator Signature

10/31/19

Date



Board Secretary Signature

10/31/19

Date

Lesley A Stricker

Contact Person

lstricker@cocalico.org

Contact Person E-mail Address

(717)336-1405

Ext :

Contact Person Telephone Number

(717)336-1415

Contact Person Fax Number

Audit Certification
Annual Financial Report:
For Fiscal Year Ending **6/30/2019**
(Pursuant to PA School Code Section 218(b))

LEA Name : Cocalico SD
AUN Number : 113361303
County : Lancaster

Audit Certification Due: 12/31/2019

This certification is applicable to the Annual Financial Report data submitted through the Consolidated Financial Reporting System on: 10/31/19
Date

Auditing Firm:

Trout, Ebersole & Groff

CERTIFICATION: By signing this page I agree that the financial statements of the school have been properly audited as noted above pursuant to Article XXIV, and in the auditor's professional opinion, the Annual Financial Report (PDE-2057) submitted on the date referenced is materially consistent with the audited financial statements.

Chief School Administrator

Ella Mussen
Signature

10/31/19
Date

Board Secretary

Phemi L. Stull
Signature

10/31/19
Date

Lesley A Stricker

Contact Person

lstricker@cocalico.org

Contact Person E-mail Address

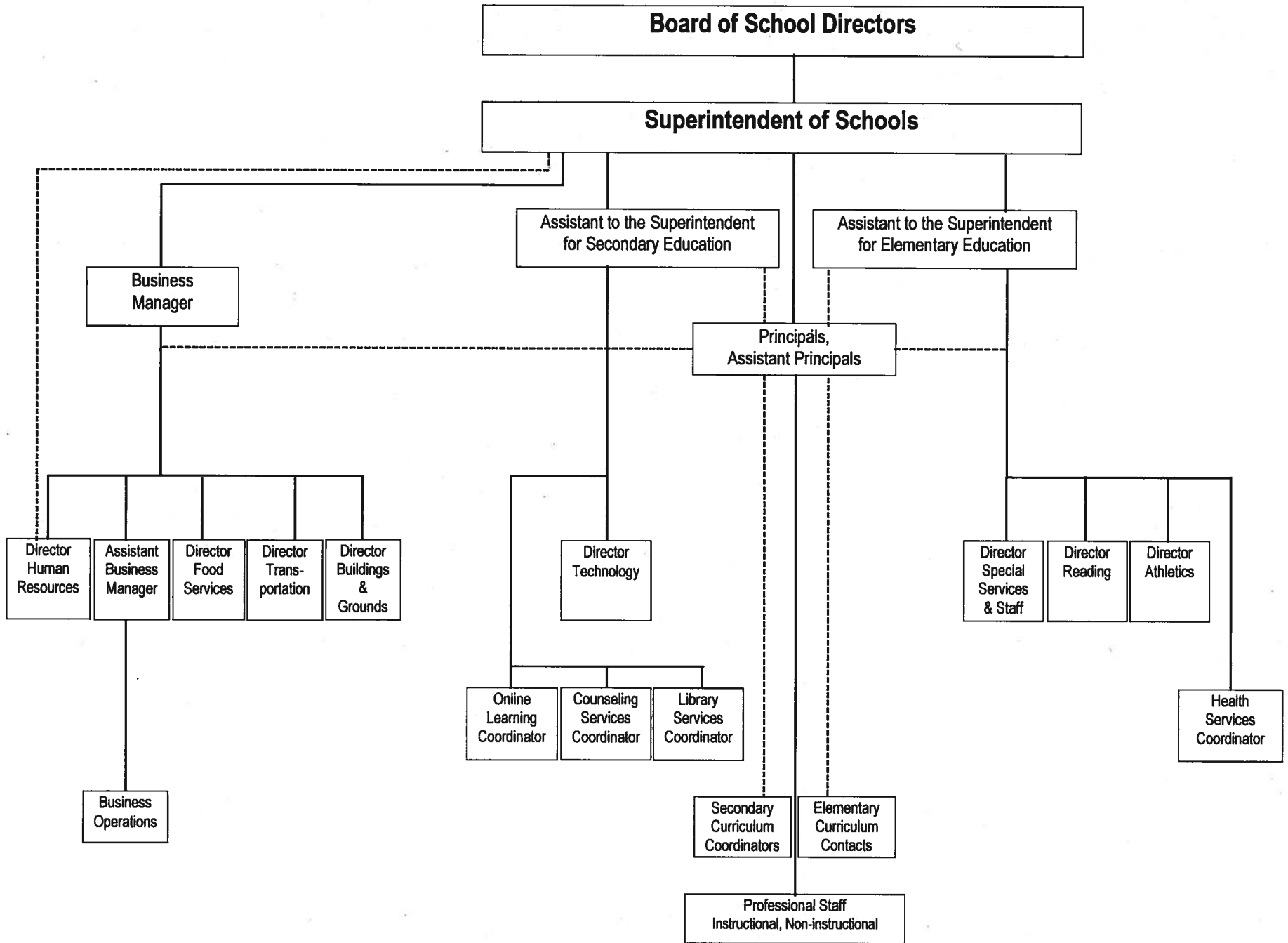
(717)336-1405

Ext :

Contact Person Telephone Number

(717)336-1415

Contact Person Fax Number



<u>Val Number</u>	<u>Description</u>	<u>Justification</u>
16015	<p>REP Fund 51: Object 300 is greater than object 500. Purchased services for food service contracted services should be coded to objects 571 and 572. Correct or enter a justification.</p> <p>REP Fund 51 Object 300: \$2,310.00 REP Fund 51 Object 500: \$724.00</p>	<p>Our district does not contract food service. We hire an outside consultant to train staff on safe serve.</p>
30685	<p>Revenue Detail: Current Tax Revenue amount cannot exceed 50% variance from prior year amount. Correct the data or enter a justification.</p> <p>6153, Current AFR Rev Detail: \$1,323,088.55 6153, Prior AFR Rev Detail: \$528,462.27</p>	<p>Large corporation in our district was purchased giving us a nice realty transfer tax.</p>
50430	<p>SESS - 2160 Social Work Services: SESS Schedule amounts for Special Education vary from prior year by 40% or more. Correct the data or enter a justification.</p> <p>SESS Schedule 2160: \$238,111.61 Prior Year SESS Schedule 2160: \$126,528.97</p>	<p>Hired an additional social worker at our school district.</p>
50450	<p>SESS - 2350 Legal and Accounting Services: SESS Schedule amounts for Special Education vary from prior year by 40% or more. Correct the data or enter a justification.</p> <p>SESS Schedule 2350: \$2,670.27 Prior Year SESS Schedule 2350: \$5,709.83</p>	<p>Less legal services needed for our special education students.</p>

Amounts Expressed in Whole Dollars	<u>General Fund</u> <u>(10)</u>	<u>Public Purpose Trust</u> <u>(27)</u>	<u>Other Compt Approved</u> <u>(28)</u>	<u>Athletic / Activity</u> <u>(29)</u>	<u>Capital Reserve (690.</u> <u>1850)</u> <u>(31)</u>
Assets And Deferred Outflows Of Resources					
Assets					
0100 Cash and Cash Equivalents	10,347,452				
0110 Investments	16,282,735				
0120 Taxes Receivable	985,047				
0130 Due From Other Funds	54,979				
0141 Due From Other Governments	2,598,973				
0142 State Revenue Receivable					
0143 Federal Revenue Receivable					
0145 Other Intergovernmental Revenue Receivable					
0146 Due from Primary Government					
0147 Due from Component Unit					
0150 Other Receivables	272,531				
0170 Inventories	45,311				
0180 Prepaid Expenses (Expenditures)	24,229				
0190 Other Current Assets					
Total Assets	\$30,611,257				
0910 Deferred Outflows of Resources					
Total Assets And Deferred Outflows Of Resources	\$30,611,257				

Amounts Expressed in Whole Dollars	<u>Capital Reserve (1431)</u> <u>(32)</u>	<u>Other Capital Projects</u> <u>Fund</u> <u>(39)</u>	<u>Debt Service</u> <u>(40)</u>	<u>Permanent</u> <u>(90)</u>	<u>Total Governmental</u> <u>Funds</u>
Assets And Deferred Outflows Of Resources					
Assets					
0100 Cash and Cash Equivalents					16,683,022
0110 Investments					22,387,521
0120 Taxes Receivable					985,047
0130 Due From Other Funds					3,526,097
0141 Due From Other Governments					2,598,973
0142 State Revenue Receivable					
0143 Federal Revenue Receivable					
0145 Other Intergovernmental Revenue Receivable					
0146 Due from Primary Government					
0147 Due from Component Unit					
0150 Other Receivables		1,260			273,791
0170 Inventories					45,311
0180 Prepaid Expenses (Expenditures)					24,229
0190 Other Current Assets					
Total Assets		\$15,912,734			\$46,523,991
0910 Deferred Outflows of Resources					
Total Assets And Deferred Outflows Of Resources		\$15,912,734			\$46,523,991

Amounts Expressed in Whole Dollars

	<u>General Fund</u> <u>(10)</u>	<u>Public Purpose Trust</u> <u>(27)</u>	<u>Other Compt Approved</u> <u>(28)</u>	<u>Athletic / Activity</u> <u>(29)</u>	<u>Capital Reserve (690.</u> <u>1850)</u> <u>(31)</u>
Liabilities And Deferred Inflows Of Resources And Fund Balances					
Liabilities					
0400 Due to Other Funds	3,471,274				
0411 Due to Other Governments	293,341				
0412 Due to Primary Government					
0413 Due to Component Unit					
0420 Accounts Payable	122,332				
0430 Contracts Payable					
0440 Current Portion of Long-Term Debt					
0450 Short-Term Payables					
0461 Accrued Salaries and Benefits	6,056,764				
0462 Payroll Deductions and Withholding					
0480 Unearned Revenues	130,525				
0490 Other Current Liabilities					
Total Liabilities	\$10,074,236				
0950 Deferred Inflows of Resources	302,509				
Fund Balances					
0810 Nonspendable Fund Balance	69,540				
0820 Restricted Fund Balance					
0830 Committed Fund Balance	13,820,000				
0840 Assigned Fund Balance	1,260,000				
0850 Unassigned Fund Balance	5,084,972				
Total Fund Balances	\$20,234,512				
Total Liabilities, Deferred Inflows Of Resources And Fund Balances	\$30,611,257				

Amounts Expressed in Whole Dollars

	<u>Capital Reserve (1431)</u> <u>(32)</u>	<u>Other Capital Projects</u> <u>Fund</u> <u>(39)</u>	<u>Debt Service</u> <u>(40)</u>	<u>Permanent</u> <u>(90)</u>	<u>Total Governmental</u> <u>Funds</u>
Liabilities And Deferred Inflows Of Resources And Fund Balances					
Liabilities					
0400 Due to Other Funds					3,471,274
0411 Due to Other Governments	651				293,992
0412 Due to Primary Government					
0413 Due to Component Unit					
0420 Accounts Payable	757,218				879,550
0430 Contracts Payable					
0440 Current Portion of Long-Term Debt					
0450 Short-Term Payables					
0461 Accrued Salaries and Benefits					6,056,764
0462 Payroll Deductions and Withholding					
0480 Unearned Revenues					130,525
0490 Other Current Liabilities					
Total Liabilities	\$757,869				\$10,832,105
0950 Deferred Inflows of Resources					302,509
Fund Balances					
0810 Nonspendable Fund Balance					69,540
0820 Restricted Fund Balance					
0830 Committed Fund Balance					13,820,000
0840 Assigned Fund Balance	15,154,865				16,414,865
0850 Unassigned Fund Balance					5,084,972
Total Fund Balances	\$15,154,865				\$35,389,377
Total Liabilities, Deferred Inflows Of Resources And Fund Balances	\$15,912,734				\$46,523,991

Amounts Expressed in Whole Dollars	<u>General Fund</u> <u>(10)</u>	<u>Public Purpose Trust</u> <u>(27)</u>	<u>Other Compt Approved</u> <u>(28)</u>	<u>Athletic / Activity</u> <u>(29)</u>	<u>Capital Reserve (690.</u> <u>1850)</u> <u>(31)</u>
Revenues					
6000 Revenue from Local Sources	40,678,030				
7000 Revenue from State Sources	17,145,476				
8000 Revenue from Federal Sources	760,784				
Total Revenues	\$58,584,290				
Expenditures					
1000 Instruction	33,909,218				
2000 Support Services	16,450,587				
3000 Operation of Non-Instructional Services	1,180,280				
4000 Facilities Acquisition, Construction and Improvement Services					
5110 Debt Service	579,811				
5130 Refund of Prior Year Revenues / Receipts	4,146				
Total Expenditures	\$52,124,042				
Excess (Deficiency) Of Revenues Over Expenditures	\$6,460,248				
Other Financing Sources (Uses)					
9110 Face Value of Bonds Issued					
9120 Proceeds from Refunding of Bonds					
9130 Bond Premiums					
9200 Proceeds from Extended-Term Financing	339,500				
9300 Interfund Transfers - IN					
9400 Sale of or Compensation for Loss of Fixed Assets	107,976				
9710 Transfers from Component Units					
9720 Transfers from Primary Governments					
9910 Other Financing Sources Not Listed in the 9000 Series					
9990 Insurance Recoveries					
5120 Debt Service – Refunded Bonds					
5150 Bond Discounts					
5200 Interfund Transfers – Out	7,017,112				
5300 Transfers Out to Component Units/Primary Governments					
Total Other Financing Sources (Uses)	(\$6,569,636)				

Amounts Expressed in Whole Dollars	<u>Capital Reserve (1431)</u> <u>(32)</u>	<u>Other Capital Projects</u> <u>Fund</u> <u>(39)</u>	<u>Debt Service</u> <u>(40)</u>	<u>Permanent</u> <u>(90)</u>	<u>Total Governmental</u> <u>Funds</u>
Revenues					
6000 Revenue from Local Sources	275,125				40,953,155
7000 Revenue from State Sources					17,145,476
8000 Revenue from Federal Sources					760,784
Total Revenues	\$275,125				\$58,859,415
Expenditures					
1000 Instruction					33,909,218
2000 Support Services	1,231,774		500		17,682,861
3000 Operation of Non-Instructional Services					1,180,280
4000 Facilities Acquisition, Construction and Improvement Services	1,567,669				1,567,669
5110 Debt Service			3,528,882		4,108,693
5130 Refund of Prior Year Revenues / Receipts					4,146
Total Expenditures	\$2,799,443		\$3,529,382		\$58,452,867
Excess (Deficiency) Of Revenues Over Expenditures	(\$2,524,318)		(\$3,529,382)		\$406,548
Other Financing Sources (Uses)					
9110 Face Value of Bonds Issued					
9120 Proceeds from Refunding of Bonds					
9130 Bond Premiums					
9200 Proceeds from Extended-Term Financing					339,500
9300 Interfund Transfers - IN	3,487,730		3,529,382		7,017,112
9400 Sale of or Compensation for Loss of Fixed Assets					107,976
9710 Transfers from Component Units					
9720 Transfers from Primary Governments					
9910 Other Financing Sources Not Listed in the 9000 Series					
9990 Insurance Recoveries					
5120 Debt Service – Refunded Bonds					
5150 Bond Discounts					
5200 Interfund Transfers – Out					7,017,112
5300 Transfers Out to Component Units/Primary Governments					
Total Other Financing Sources (Uses)	\$3,487,730		\$3,529,382		\$447,476

Amounts Expressed in Whole Dollars	<u>General Fund</u> <u>(10)</u>	<u>Public Purpose Trust</u> <u>(27)</u>	<u>Other Compt Approved</u> <u>(28)</u>	<u>Athletic / Activity</u> <u>(29)</u>	<u>Capital Reserve</u> <u>(690.</u> <u>1850)</u> <u>(31)</u>
Special And Extraordinary Items					
9920 Special Items – Gains					
9930 Extraordinary Items – Gains					
5520 Special Items – Losses					
5530 Extraordinary Items – Losses					
Net Change In Fund Balances	(\$109,388)				
Fund Balance					
0001 Fund Balance - Beginning of Fiscal Year	20,343,900				
Fund Balance - End Of Year	\$20,234,512				

Amounts Expressed in Whole Dollars	<u>Capital Reserve (1431)</u> <u>(32)</u>	<u>Other Capital Projects</u> <u>Fund</u> <u>(39)</u>	<u>Debt Service</u> <u>(40)</u>	<u>Permanent</u> <u>(90)</u>	<u>Total Governmental</u> <u>Funds</u>
Special And Extraordinary Items					
9920 Special Items – Gains					
9930 Extraordinary Items – Gains					
5520 Special Items – Losses					
5530 Extraordinary Items – Losses					
Net Change In Fund Balances	\$963,412				\$854,024
Fund Balance					
0001 Fund Balance - Beginning of Fiscal Year	14,191,453				34,535,353
Fund Balance - End Of Year	\$15,154,865				\$35,389,377

Amounts Expressed in Whole Dollars	<u>Food Service</u> <u>(51)</u>	<u>Child Care</u> <u>Operations</u> <u>(52)</u>	<u>Other Enterprise</u> <u>(58)</u>	<u>TOTAL</u>	<u>Internal Service</u> <u>(60)</u>
Assets And Deferred Outflows Of Resources					
Current Assets					
0100 Cash and Cash Equivalents	392,352			392,352	602,547
0110 Investments	157,677			157,677	
0130 Due From Other Funds	156			156	
0141 Due From Other Governments	2,522			2,522	
0142 State Revenue Receivable					
0143 Federal Revenue Receivable					
0146 Due from Primary Government					
0147 Due from Component Unit					
0150 Other Receivables	727			727	
0170 Inventories	64,086			64,086	
0180 Prepaid Expenses (Expenditures)					
0190 Other Current Assets					
Total Current Assets	\$617,520			\$617,520	\$602,547
Noncurrent Assets					
0211 Land					
0212 Site Improvements (Net)					
0220 Buildings and Building Improvements (Net)					
0230 Machinery, Equipment and Furniture (Net)	21,779			21,779	
0250 Construction in Progress					
0260 Long Term Prepayments					
0290 Other Noncurrent Assets					
Total Noncurrent Assets	\$21,779			\$21,779	
0910 Deferred Outflows of Resources	231,000			231,000	
Total Assets And Deferred Outflows Of Resources	\$870,299			\$870,299	\$602,547

Amounts Expressed in Whole Dollars	<u>Food Service</u> (51)	<u>Child Care</u> <u>Operations</u> (52)	<u>Other Enterprise</u> (58)	<u>TOTAL</u>	<u>Internal Service</u> (60)
Liabilities And Deferred Inflows Of Resources And Net Position					
Current Liabilities					
0400 Due to Other Funds	54,979			54,979	
0411 Due to Other Governments					
0413 Due to Component Unit					
0420 Accounts Payable	2,454			2,454	
0430 Contracts Payable					
0440 Current Portion of Long-Term Debt					
0450 Short-Term Payables					
0461 Accrued Salaries and Benefits					
0462 Payroll Deductions and Withholding					
0480 Unearned Revenues	81,868			81,868	
0490 Other Current Liabilities	16,601			16,601	333,491
Total Current Liabilities	\$155,902			\$155,902	\$333,491
Noncurrent Liabilities					
0510 Bonds Payable					
0520 Extended-Term Financing Agreements Payable					
0530 Lease-Purchase Obligations					
0540 Accumulated Compensated Absences	68,904			68,904	
0550 Authority Lease Obligations					
0560 Other Post-Employment Benefits (OPEB)	130,000			130,000	
0570 Net Pension Liability	1,609,000			1,609,000	
0599 Other Noncurrent Liabilities					
Total Noncurrent Liabilities	\$1,807,904			\$1,807,904	
Total Liabilities	\$1,963,806			\$1,963,806	\$333,491
0950 Deferred Inflows of Resources	58,000			58,000	
Net Position					
0791 Net Investment in Capital Assets	21,779			21,779	
0008 Restricted Net Position (0792 – 0798)					
0799 Unrestricted Net Position	(1,173,286)			(1,173,286)	269,056
Total Net Position	(\$1,151,507)			(\$1,151,507)	\$269,056
Total Liabilities And Deferred Inflows Of Resources And Net Position	\$870,299			\$870,299	\$602,547

Amounts Expressed in Whole Dollars	<u>Food Service</u> <u>(51)</u>	<u>Child Care Operations</u> <u>(52)</u>	<u>Other Enterprise</u> <u>(58)</u>	<u>TOTAL</u>	<u>Internal Service</u> <u>(60)</u>
Operating Revenues					
6600 Food Service Revenue	837,954			837,954	
0071 Charges for Services					7,850,000
0072 Other Operating Revenue					
Total Operating Revenues	\$837,954			\$837,954	\$7,850,000
Operating Expenses					
100 Personnel Services – Salaries	512,845			512,845	
200 Personnel Services – Employee Benefits	381,042			381,042	6,935,193
300 Purchased Professional and Technical Services	2,310			2,310	
400 Purchased Property Services	618			618	
500 Other Purchased Services	724			724	
600 Supplies	828,399			828,399	
740 Depreciation	4,305			4,305	
810 Dues and Fees	443			443	564,084
890 Miscellaneous Expenditures					
Total Operating Expenses	\$1,730,686			\$1,730,686	\$7,499,277
Operating Income (Loss)	(\$892,732)			(\$892,732)	\$350,723
Non Operating Revenues (Expenses)					
6500 Earnings on Investments	11,433			11,433	7,973
6920 Contributions and Donations from Private Sources					
6930 Gains or Losses on Sale of Fixed Assets					
6991 Refunds of a Prior Year Expenditure					
7000 Revenue from State Sources	143,846			143,846	
8000 Revenue from Federal Sources	761,702			761,702	
9990 Insurance Recoveries					
820 Claims and Judgments Against the LEA					
830 Interest					
TOTAL Non Operating Revenues (Expenses)	\$916,981			\$916,981	\$7,973
Income (Loss) Before Contributions And Transfers	\$24,249			\$24,249	\$358,696

Amounts Expressed in Whole Dollars	<u>Food Service</u> <u>(51)</u>	<u>Child Care Operations</u> <u>(52)</u>	<u>Other Enterprise</u> <u>(58)</u>	<u>TOTAL</u>	<u>Internal Service</u> <u>(60)</u>
Contributions, Transfers, and Special and Extraordinary Items					
5200 Interfund Transfers – Out					
5300 Transfers Out to Component Units/Primary Governments					
5520 Special Items – Losses					
5530 Extraordinary Items – Losses					
9300 Interfund Transfers - IN					
9500 Capital Contributions					
9700 Transfers IN From Component Units/Primary Governments					
9920 Special Items – Gains					
9930 Extraordinary Items – Gains					
Change In Net Position	\$24,249			\$24,249	\$358,696
0002 Net Position - Beginning of Fiscal Year	(1,175,754)			(1,175,754)	(89,640)
0003 Accounting Changes / Residual Equity Transfers					
Net Position - End Of Year	(\$1,151,505)			(\$1,151,505)	\$269,056

LEA : 113361303 Cocalico SD

Printed 11/5/2019 7:06:18 AM

Amounts Expressed in Whole Dollars	<u>Food Service</u> <u>(51)</u>	<u>Child Care Operations</u> <u>(52)</u>	<u>Other Enterprise</u> <u>(58)</u>	<u>TOTAL</u>	<u>Internal Service(60)</u>
Cash Flows From Operating Activities					
0011 Cash Receipts From Users	849,110			849,110	
0012 Cash Receipts From Assessments Made to Other Funds					7,850,000
0013 Cash Receipts From Earnings on Investments					
0014 Cash Receipts From Other Operating Revenue					
0015 Cash Payments To Employees For Services	872,697			872,697	
0016 Cash Payments For Insurance Claims					7,635,456
0017 Cash Payments To Suppliers For Goods and Services	728,630			728,630	
0018 Cash Payments For Other Operating Expenses	1,739			1,739	
Net Cash Provided By (Used For) Operating Activities	(\$753,956)			(\$753,956)	\$214,544
Cash Flows From Non-Capital Financing Activities					
0021 Receipts From Local Sources - 6000					
0022 Receipts From State Sources - 7000	144,931			144,931	
0023 Receipts From Federal Sources -8000	667,809			667,809	
0024 Notes and Loans Received (Repaid)					
0025 Interest Paid on Notes/Loans - 5100-830					
0026 Operating Transfers In (Out)/Residual Equity Trans					
0027 Operating Transfers In (Out) Primary Government / Comp Unit					
0028 Receipts From Refund of Prior Year Expenditures - 6991					
0029 Special and Extraordinary Gains (losses)					
0030 Receipts from Insurance Recoveries -9990					
Net Cash Prov By (Used for) Non-Capital Financing Activities	\$812,740			\$812,740	
Cash Flows From Capital and Related Financing Activities					
0031 Payments For Fac Acq, Const, and Imp - 4000	(6,213)			(6,213)	
0032 Gain / (Loss) on Sale of Fixed Assets - 6930					
0033 Proceeds From Extended Term Financing - 9200					
0034 Principal Paid on Financing Agreements					
0035 Interest Paid on Financing Agreements - 5100-830					
0036 (Inc) Dec in Contributed Capital					
Net Cash Prov By (Used for) Capital and Related Financing Activities	(\$6,213)			(\$6,213)	
Cash Flows From Investing Activities					
0041 Earnings on Investments - 6500	11,433			11,433	7,973
0042 Purchase of Inv Securities / Deposits to Inv Pools	(3,144)			(3,144)	
0043 Receipts From Investment Pool Withdrawals					
0044 Proceeds from Sale and Maturity of Inv Securities					

LEA : 113361303 Cocalico SD

Printed 11/5/2019 7:06:18 AM

0045 Loans Received (Paid)

Net Cash Prov By (Used for) Investing Activities	\$8,289	\$8,289	\$7,973
---	----------------	----------------	----------------

	<u>Food Service</u> (51)	<u>Child Care Operations</u> (52)	<u>Other Enterprise</u> (58)	<u>TOTAL</u>	<u>Internal Service</u> (60)
Net Increase (Decrease) in Cash Flows	60,860			60,860	222,517
0004 Cash and Cash Equivalents Beginning of Year	331,492			331,492	380,030
Cash and Cash Equivalents at Year End	\$392,352			\$392,352	\$602,547

Reconciliation of Operating Income (Loss) To Net Cash Provided by (Used For) Operating Activities

0005 Operating Income (Loss) per REP	(892,732)			(892,732)	350,723
Adjustments					
0051 Depreciation and Net Amortization	4,305			4,305	
0052 Provision for Uncollectible Accounts					
0053 Other Adjustments	116,149			116,149	
Effect of Changes in Assets, Liabilities, Deferred Outflows and Deferred Inflows					
0054 (Inc) Dec In Accounts Receivable (0120-0150)					
0055 Advances to Other Funds (0160)					
0056 (Inc) Dec in Inventories (0170)	4,423			4,423	
0057 (Inc) Dec in Prepaid Expenses (0180)					
0058 (Inc) Dec in Other Current or Noncurrent Assets	11,262			11,262	
0064 Deferred Outflows (0910)					
0059 Inc (Dec) in Accounts Payable (0400-0450)	(18,445)			(18,445)	
0060 Inc (Dec) in Accrued Salaries/Benefits (0461)					
0065 Inc (Dec) in Net Pension Liabilities (0570)	12,000			12,000	
0066 Inc (Dec) in Other Postemp Benefit Oblig (0560)	2,000			2,000	
0061 Inc (Dec) in Payroll Deductions/Withholding (0462)					
0062 Inc (Dec) in Unearned Revenue (0480)	(106)			(106)	
0063 Inc (Dec) in Other Current or Noncurrent Liabilities	7,190			7,190	(136,179)
0067 Deferred Inflows (0950)					
Total Adjustments	\$138,778			\$138,778	(\$136,179)
Cash Provided By (Used for) Total	(\$753,954)			(\$753,954)	\$214,544

COMBINED STATEMENT OF CASH FLOWS
SCHEDULE OF NONCASH INVESTING, CAPITAL, AND FINANCING ACTIVITIES

Explanation of Transaction and Balance Sheet Effect	Amount
Total	

LEA : 113361303 Cocalico SD

Printed 11/5/2019 7:06:20 AM

Amounts Expressed in Whole Dollars

	<u>Private Purpose Trust</u> (71)	<u>Investment Trust</u> (72)	<u>Pension Trust</u> (73)	<u>Activity</u> (81)
Assets And Deferred Outflows Of Resources				
Assets				
0100 Cash and Cash Equivalents	11,796			99,186
0110 Investments	21,606			
0130 Due From Other Funds				
0147 Due from Component Unit				
0150 Other Receivables				
0170 Inventories				
0180 Prepaid Expenses (Expenditures)				
0190 Other Current Assets				
0220 Buildings and Building Improvements (Net)				
0230 Machinery, Equipment and Furniture (Net)				
Total Assets	\$33,402			\$99,186
0910 Deferred Outflows of Resources				
Total Assets And Deferred Outflows Of Resources	\$33,402			\$99,186

LEA : 113361303 Cocalico SD

Printed 11/5/2019 7:06:20 AM

Amounts Expressed in Whole Dollars

	<u>Other Agency</u> <u>(89)</u>	<u>Discrete Component Units</u> <u>(98)</u>	<u>Discrete Component Units</u> <u>(99)</u>	<u>Total Fiduciary Funds</u>
Assets And Deferred Outflows Of Resources				
Assets				
0100 Cash and Cash Equivalents				110,982
0110 Investments				21,606
0130 Due From Other Funds				
0147 Due from Component Unit				
0150 Other Receivables				
0170 Inventories				
0180 Prepaid Expenses (Expenditures)				
0190 Other Current Assets				
0220 Buildings and Building Improvements (Net)				
0230 Machinery, Equipment and Furniture (Net)				
Total Assets				\$132,588
0910 Deferred Outflows of Resources				
Total Assets And Deferred Outflows Of Resources				\$132,588

LEA : 113361303 Cocalico SD

Printed 11/5/2019 7:06:20 AM

Amounts Expressed in Whole Dollars	<u>Private Purpose Trust</u> (71)	<u>Investment Trust</u> (72)	<u>Pension Trust</u> (73)	<u>Activity</u> (81)
Liabilities, Deferred Inflows Of Resources And Net Position				
Liabilities				
0400 Due to Other Funds				
0411 Due to Other Governments				98,127
0412 Due to Primary Government				
0413 Due to Component Unit				
0420 Accounts Payable				1,059
0430 Contracts Payable				
0450 Short-Term Payables				
0461 Accrued Salaries and Benefits				
0462 Payroll Deductions and Withholding				
0480 Unearned Revenues				
0490 Other Current Liabilities				
Total Liabilities				\$99,186
0950 Deferred Inflows of Resources				
Net Position				
0791 Net Investment in Capital Assets				
0009 Restricted Net Position (0792 – 0798)	33,402			
0799 Unrestricted Net Position				
Total Net Position	\$33,402			
Total Liabilities, Deferred Inflows Of Resources And Net Position	\$33,402			\$99,186

LEA : 113361303 Cocalico SD

Printed 11/5/2019 7:06:20 AM

Amounts Expressed in Whole Dollars	<u>Other Agency</u> (89)	<u>Discrete Component Units</u> (98)	<u>Discrete Component Units</u> (99)	<u>Total Fiduciary Funds</u>
Liabilities, Deferred Inflows Of Resources And Net Position				
Liabilities				
0400 Due to Other Funds				
0411 Due to Other Governments				98,127
0412 Due to Primary Government				
0413 Due to Component Unit				
0420 Accounts Payable				1,059
0430 Contracts Payable				
0450 Short-Term Payables				
0461 Accrued Salaries and Benefits				
0462 Payroll Deductions and Withholding				
0480 Unearned Revenues				
0490 Other Current Liabilities				
Total Liabilities				\$99,186
0950 Deferred Inflows of Resources				
Net Position				
0791 Net Investment in Capital Assets				
0009 Restricted Net Position (0792 – 0798)				33,402
0799 Unrestricted Net Position				
Total Net Position				\$33,402
Total Liabilities, Deferred Inflows Of Resources And Net Position				\$132,588

Amounts Expressed in Whole Dollars	<u>Private Purpose Trust</u> <u>(71)</u>	<u>Investment Trust</u> <u>(72)</u>	<u>Pension Trust</u> <u>(73)</u>	<u>Discrete Component</u> <u>Units</u> <u>(98)</u>	<u>Discrete Component</u> <u>Units</u> <u>(99)</u>	<u>Total Fiduciary</u> <u>Funds</u>
Additions						
0091 Gifts and Contributions	2,566					2,566
0092 Other Additions	72					72
Deductions						
0093 Scholarships Awarded	1,000					1,000
0094 Other Deductions						
Change In Net Position	\$1,638					\$1,638
0006 Net Position – Beginning of Fiscal Year	31,764					31,764
0007 Net Position Held in Trust for Pension Benefits						
Net Position - End of Fiscal Year	\$33,402					\$33,402

	<u>Revenue Reported In Current Year</u>	<u>Current Year Tax Accrual</u>	<u>Prior Year Tax Accrual</u>	<u>Taxes Collected In Current Year</u>
<u>Revenue from Local Sources</u>				
6111 Current Real Estate Taxes	33,228,990.32			33,228,990.32
6112 Interim Real Estate Taxes	307,004.29			307,004.29
6113 Public Utility Realty Taxes	37,252.33			37,252.33
6114 Payments in Lieu of Current Taxes - State / Local	478.49			478.49
6151 Current Act 511 Earned Income Taxes	3,320,880.25			3,320,880.25
6153 Current Act 511 Real Estate Transfer Taxes	1,323,088.55			1,323,088.55
6411 Delinquent Real Estate Taxes	577,068.39			577,068.39
6420 Delinquent Per Capita Taxes, Section 679	247.50			247.50
6500 Earnings on Investments	835,549.27			
6700 Revenues from LEA Activities	73,058.70			
6810 Revenue from Local Governmental Units	30,028.00			
6821 State Revenue Received from Other Pennsylvania Public LEAs	82,640.03			
6831 Federal Revenue Received from Other Pennsylvania Public LEAs	86,276.06			
6832 Federal IDEA Revenue Received as Pass Through	626,874.00			
6910 Rentals	28,179.25			
6920 Contributions and Donations from Private Sources	11,107.96			
6942 Summer School Tuition	5,850.00			
6944 Receipts from Other LEAs in Pennsylvania - Education	13,927.62			
6991 Refunds of a Prior Year Expenditure	51,071.51			
6999 Other Revenues Not Specified Above	38,457.34			
TOTAL Revenue from Local Sources	\$40,678,029.86			\$38,795,010.12

**Revenue Reported
In Current Year**

Revenue from State Sources

7110 Basic Education Funding	7,481,761.57		
7160 Tuition for Orphans Subsidy	35,180.55		
7271 Special Education funds for School-Aged Pupils	1,778,741.18		
7299 Program Revenues Not Listed Previously in the 7200 Series	3.65		
7311 Pupil Transportation Subsidy	1,228,587.62		
7312 Nonpublic and Charter School Pupil Transportation Subsidy	95,865.00		
7320 Rental and Sinking Fund Payments / Building Reimbursement Subsidy	104,507.57		
7330 Health Services (Medical, Dental, Nurse, Act 25)	54,371.85		
7340 State Property Tax Reduction Allocation	1,108,891.99		
7505 Ready to Learn Block Grant	400,960.00		
7599 Other State Revenue Not Listed Elsewhere in the 7000 Series	95,999.66		
7810 State Share of Social Security and Medicare Taxes	852,993.51		
7820 State Share of Retirement Contributions	3,907,611.35		
TOTAL Revenue from State Sources	\$17,145,475.50		

**Revenue Reported
In Current Year**

Revenue from Federal Sources

8514 NCLB, Title I - Improving the Academic Achievement of the Disadvantaged	458,468.60		
8515 NCLB, Title II - Preparing, Training and Recruiting High Quality Teachers and Principals	97,558.76		
8516 NCLB, Title III - Language Instruction for Limited English Proficient and Immigrant Students	10,914.00		
8517 NCLB, Title IV - 21St Century Schools	33,595.58		
8810 School-Based Access Medicaid Reimbursement Program (SBAP) Reimbursements (Access)	147,204.75		
8820 Medical Assistance Reimbursement for Administrative Claiming (Quarterly) Program	13,041.96		
TOTAL Revenue from Federal Sources	\$760,783.65		

	Revenue Reported In Current Year			
Other Financing Sources				
9290 Other Extended-Term Financing Proceeds	339,500.00			
9400 Sale of or Compensation for Loss of Fixed Assets	107,975.50			
TOTAL Other Financing Sources	\$447,475.50			
TOTAL FROM ALL SOURCES	\$59,031,764.51			\$38,795,010.12

Revenue from Local Sources	40,678,029.86
Revenue from State Sources	17,145,475.50
Revenue from Federal Sources	760,783.65
Other Financing Sources	447,475.50
TOTAL FROM ALL SOURCES	\$59,031,764.51

General Fund (10)

	<u>Total</u>
1000 Instruction	
100 Personnel Services – Salaries	
100 Personnel Services – Salaries	16,324,191.53
Total Personnel Services – Salaries	\$16,324,191.53
200 Personnel Services – Employee Benefits	
210 Group Insurance – Contracted Provider	26,205.90
220 Social Security Contributions	1,204,609.60
230 PSERS Retirement Contributions	5,472,221.39
250 Unemployment Compensation	5,592.97
260 Workers’ Compensation	116,344.34
270 Group Insurance – Self-Insurance	3,920,669.96
299 All Other Employee Benefits	153,340.00
Total Personnel Services – Employee Benefits	\$10,898,984.16
300 Purchased Professional and Technical Services	
322 Professional Educational Services – Ius	1,868,232.00
329 Professional Educational Services – Other	564,753.55
330 Other Professional Services	3,041.57
340 Technical Services	12,330.00
390 Other Purchased Professional and Technical Services	9,517.67
Total Purchased Professional and Technical Services	\$2,457,874.79
400 Purchased Property Services	
430 Repairs and Maintenance Services	142,302.60
440 Rentals	62,327.37
Total Purchased Property Services	\$204,629.97
500 Other Purchased Services	
510 Student Transportation Services	36,529.10
561 Tuition To Other School Districts Within the State	349,661.96
562 Tuition To Pennsylvania Charter Schools	773,839.91
563 Tuition To Nonpublic Schools	343,819.00
564 Tuition To Career and Technology Centers	903,457.82
568 Tuition To Private Residential Rehabilitative Institutions (PRRI) [In-State] and Detention Centers	187,081.45
569 Tuition – Other	49,205.05
580 Travel	2,524.99
594 IU Payment By Withholding for Institutionalized Children’s Programs – Special Classes	1,002.79
Total Other Purchased Services	\$2,647,122.07
600 Supplies	
610 General Supplies	473,474.69
630 Food	3,937.00
640 Books and Periodicals	111,361.16
650 Supplies & Fees – Technology Related	235,186.38
Total Supplies	\$823,959.23
700 Property	
752 Capital Equipment – Original and Additional	57,011.20
756 Capitalized Technology Equipment – Original	343,376.00

General Fund (10)

1000 Instruction	<u>Total</u>
700 <u>Property</u>	
762 Capitalized Equipment - Replacement	9,587.89
766 Capitalized Technology Equipment – Replacement	133,459.09
Total Property	\$543,434.18
800 <u>Other Objects</u>	
810 Dues and Fees	7,887.00
890 Miscellaneous Expenditures	1,135.00
Total Other Objects	\$9,022.00
Total 1000 Instruction	\$33,909,217.93

General Fund (10)

1100 Regular Programs – Elementary / Secondary

	<u>Elementary</u>	<u>Secondary</u>	<u>Federal</u>	<u>Total</u>
100 Personnel Services – Salaries				
100 Personnel Services – Salaries	5,551,657.57	7,581,602.95	264,674.32	13,397,934.84
Total Personnel Services – Salaries	\$5,551,657.57	\$7,581,602.95	\$264,674.32	\$13,397,934.84
200 Personnel Services – Employee Benefits				
210 Group Insurance – Contracted Provider	9,072.64	12,677.70	299.66	22,050.00
220 Social Security Contributions	409,230.94	558,983.01	19,411.39	987,625.34
230 PSERS Retirement Contributions	1,919,144.96	2,540,993.60	44,240.53	4,504,379.09
250 Unemployment Compensation	486.09	4,718.88		5,204.97
260 Workers' Compensation	39,567.28	54,034.94	1,886.36	95,488.58
270 Group Insurance – Self-Insurance	1,312,063.40	1,872,414.01	49,966.90	3,234,444.31
299 All Other Employee Benefits	38,505.00	114,835.00		153,340.00
Total Personnel Services – Employee Benefits	\$3,728,070.31	\$5,158,657.14	\$115,804.84	\$9,002,532.29
300 Purchased Professional and Technical Services				
322 Professional Educational Services – Ius	2,491.11		5,974.39	8,465.50
329 Professional Educational Services – Other	223,229.71	240,781.37	840.00	464,851.08
330 Other Professional Services	126.00	125.99	2,789.58	3,041.57
Total Purchased Professional and Technical Services	\$225,846.82	\$240,907.36	\$9,603.97	\$476,358.15
400 Purchased Property Services				
430 Repairs and Maintenance Services	56,251.62	86,050.98		142,302.60
Total Purchased Property Services	\$56,251.62	\$86,050.98		\$142,302.60
500 Other Purchased Services				
510 Student Transportation Services	11,915.24	10,989.42	1,725.69	24,630.35
561 Tuition To Other School Districts Within the State	3,791.76			3,791.76
562 Tuition To Pennsylvania Charter Schools	237,398.42	357,324.60		594,723.02
568 Tuition To Private Residential Rehabilitative Institutions (PRRI) [In-State] and Detention Centers		5,811.11		5,811.11
569 Tuition – Other	3,203.93	7,662.41		10,866.34
580 Travel	1,059.37	422.65		1,482.02
Total Other Purchased Services	\$257,368.72	\$382,210.19	\$1,725.69	\$641,304.60
600 Supplies				
610 General Supplies	183,669.47	255,659.06	11,185.94	450,514.47
640 Books and Periodicals	3,749.54	62,189.64	33,812.73	99,751.91
650 Supplies & Fees – Technology Related	73,367.65	108,107.00	3,920.00	185,394.65
Total Supplies	\$260,786.66	\$425,955.70	\$48,918.67	\$735,661.03
700 Property				
752 Capital Equipment – Original and Additional	48,393.13	5,491.00		53,884.13
756 Capitalized Technology Equipment – Original	171,688.00	169,750.00		341,438.00
762 Capitalized Equipment - Replacement	5,151.82	4,436.07		9,587.89
766 Capitalized Technology Equipment – Replacement		133,459.09		133,459.09
Total Property	\$225,232.95	\$313,136.16		\$538,369.11
800 Other Objects				
810 Dues and Fees	602.00	4,355.00		4,957.00

LEA : 113361303 Cocalico SD

Printed 11/5/2019 7:06:29 AM

General Fund (10)

1100 Regular Programs – Elementary / Secondary

	<u>Elementary</u>	<u>Secondary</u>	<u>Federal</u>	<u>Total</u>
Total Other Objects	\$602.00	\$4,355.00		\$4,957.00
Total 1100 Regular Programs – Elementary / Secondary	\$10,305,816.65	\$14,192,875.48	\$440,727.49	\$24,939,419.62

General Fund (10)

1110 Regular Programs

	<u>Elementary</u>	<u>Secondary</u>	<u>Federal</u>	<u>Total</u>
100 Personnel Services – Salaries				
100 Personnel Services – Salaries	5,551,657.57	7,581,602.95		13,133,260.52
Total Personnel Services – Salaries	\$5,551,657.57	\$7,581,602.95		\$13,133,260.52
200 Personnel Services – Employee Benefits				
210 Group Insurance – Contracted Provider	9,072.64	12,677.70		21,750.34
220 Social Security Contributions	409,230.94	558,983.01		968,213.95
230 PSERS Retirement Contributions	1,919,144.96	2,540,993.60		4,460,138.56
250 Unemployment Compensation	486.09	4,718.88		5,204.97
260 Workers' Compensation	39,567.28	54,034.94		93,602.22
270 Group Insurance – Self-Insurance	1,312,063.40	1,872,414.01		3,184,477.41
299 All Other Employee Benefits	38,505.00	114,835.00		153,340.00
Total Personnel Services – Employee Benefits	\$3,728,070.31	\$5,158,657.14		\$8,886,727.45
300 Purchased Professional and Technical Services				
322 Professional Educational Services – Ius	2,491.11			2,491.11
329 Professional Educational Services – Other	223,229.71	240,781.37	840.00	464,851.08
330 Other Professional Services	126.00	125.99	2,789.58	3,041.57
Total Purchased Professional and Technical Services	\$225,846.82	\$240,907.36	\$3,629.58	\$470,383.76
400 Purchased Property Services				
430 Repairs and Maintenance Services	56,251.62	86,050.98		142,302.60
Total Purchased Property Services	\$56,251.62	\$86,050.98		\$142,302.60
500 Other Purchased Services				
510 Student Transportation Services	11,915.24	10,989.42	1,725.69	24,630.35
561 Tuition To Other School Districts Within the State	3,791.76			3,791.76
562 Tuition To Pennsylvania Charter Schools	237,398.42	357,324.60		594,723.02
568 Tuition To Private Residential Rehabilitative Institutions (PRRI) [In-State] and Detention Centers		5,811.11		5,811.11
569 Tuition – Other	3,203.93	7,662.41		10,866.34
580 Travel	1,059.37	422.65		1,482.02
Total Other Purchased Services	\$257,368.72	\$382,210.19	\$1,725.69	\$641,304.60
600 Supplies				
610 General Supplies	183,669.47	255,659.06	6,880.00	446,208.53
640 Books and Periodicals	3,749.54	62,189.64	1,404.65	67,343.83
650 Supplies & Fees – Technology Related	73,367.65	108,107.00	3,920.00	185,394.65
Total Supplies	\$260,786.66	\$425,955.70	\$12,204.65	\$698,947.01
700 Property				
752 Capital Equipment – Original and Additional	48,393.13	5,491.00		53,884.13
756 Capitalized Technology Equipment – Original	171,688.00	169,750.00		341,438.00
762 Capitalized Equipment - Replacement	5,151.82	4,436.07		9,587.89
766 Capitalized Technology Equipment – Replacement		133,459.09		133,459.09
Total Property	\$225,232.95	\$313,136.16		\$538,369.11
800 Other Objects				
810 Dues and Fees	602.00	4,355.00		4,957.00

LEA : 113361303 Cocalico SD

Printed 11/5/2019 7:06:29 AM

General Fund (10)

1110 Regular Programs

	<u>Elementary</u>	<u>Secondary</u>	<u>Federal</u>	<u>Total</u>
Total Other Objects	\$602.00	\$4,355.00		\$4,957.00
Total 1110 Regular Programs	\$10,305,816.65	\$14,192,875.48	\$17,559.92	\$24,516,252.05

General Fund (10)

1200 Special Programs – Elementary / Secondary

	<u>Elementary</u>	<u>Secondary</u>	<u>Federal</u>	<u>Total</u>
100 Personnel Services – Salaries				
100 Personnel Services – Salaries	1,114,563.81	1,683,781.60		2,798,345.41
Total Personnel Services – Salaries	\$1,114,563.81	\$1,683,781.60		\$2,798,345.41
200 Personnel Services – Employee Benefits				
210 Group Insurance – Contracted Provider	1,509.90	2,520.00		4,029.90
220 Social Security Contributions	82,282.36	125,175.59		207,457.95
230 PSERS Retirement Contributions	367,821.65	558,904.31		926,725.96
250 Unemployment Compensation	388.00			388.00
260 Workers' Compensation	7,943.62	12,000.51		19,944.13
270 Group Insurance – Self-Insurance	237,891.58	430,034.72		667,926.30
Total Personnel Services – Employee Benefits	\$697,837.11	\$1,128,635.13		\$1,826,472.24
300 Purchased Professional and Technical Services				
322 Professional Educational Services – Ius	251,552.77	981,339.73	626,874.00	1,859,766.50
329 Professional Educational Services – Other	43,038.49	56,863.98		99,902.47
340 Technical Services	6,165.00	6,165.00		12,330.00
Total Purchased Professional and Technical Services	\$300,756.26	\$1,044,368.71	\$626,874.00	\$1,971,998.97
500 Other Purchased Services				
510 Student Transportation Services	300.80	11,597.95		11,898.75
561 Tuition To Other School Districts Within the State	172,935.10	172,935.10		345,870.20
562 Tuition To Pennsylvania Charter Schools	34,546.33	144,570.56		179,116.89
563 Tuition To Nonpublic Schools	91,523.30	252,295.70		343,819.00
568 Tuition To Private Residential Rehabilitative Institutions (PRRI) [In-State] and Detention Centers	85,542.21	28,472.40		114,014.61
569 Tuition – Other	5,058.84	33,279.87		38,338.71
580 Travel	631.35	411.62		1,042.97
594 IU Payment By Withholding for Institutionalized Children's Programs – Special Classes	501.40	501.39		1,002.79
Total Other Purchased Services	\$391,039.33	\$644,064.59		\$1,035,103.92
600 Supplies				
610 General Supplies	7,392.84	14,131.70		21,524.54
630 Food	83.33	166.67		250.00
640 Books and Periodicals	3,198.26	8,377.07		11,575.33
650 Supplies & Fees – Technology Related	16,325.40	33,466.33		49,791.73
Total Supplies	\$26,999.83	\$56,141.77		\$83,141.60
700 Property				
752 Capital Equipment – Original and Additional		3,127.07		3,127.07
756 Capitalized Technology Equipment – Original	969.00	969.00		1,938.00
Total Property	\$969.00	\$4,096.07		\$5,065.07
800 Other Objects				
810 Dues and Fees	1,465.00	1,465.00		2,930.00
890 Miscellaneous Expenditures	695.00	440.00		1,135.00
Total Other Objects	\$2,160.00	\$1,905.00		\$4,065.00
Total 1200 Special Programs – Elementary / Secondary	\$2,534,325.34	\$4,562,992.87	\$626,874.00	\$7,724,192.21

General Fund (10)

1240 Academic Support

	<u>Elementary</u>	<u>Secondary</u>	<u>Federal</u>	<u>Total</u>
100 Personnel Services – Salaries				
100 Personnel Services – Salaries	1,114,563.81	1,683,781.60		2,798,345.41
Total Personnel Services – Salaries	\$1,114,563.81	\$1,683,781.60		\$2,798,345.41
200 Personnel Services – Employee Benefits				
210 Group Insurance – Contracted Provider	1,509.90	2,520.00		4,029.90
220 Social Security Contributions	82,282.36	125,175.59		207,457.95
230 PSERS Retirement Contributions	367,821.65	558,904.31		926,725.96
250 Unemployment Compensation	388.00			388.00
260 Workers' Compensation	7,943.62	12,000.51		19,944.13
270 Group Insurance – Self-Insurance	237,891.58	430,034.72		667,926.30
Total Personnel Services – Employee Benefits	\$697,837.11	\$1,128,635.13		\$1,826,472.24
300 Purchased Professional and Technical Services				
322 Professional Educational Services – Ius	251,552.77	981,339.73	626,874.00	1,859,766.50
329 Professional Educational Services – Other	43,038.49	56,863.98		99,902.47
340 Technical Services	6,165.00	6,165.00		12,330.00
Total Purchased Professional and Technical Services	\$300,756.26	\$1,044,368.71	\$626,874.00	\$1,971,998.97
500 Other Purchased Services				
510 Student Transportation Services	300.80	11,597.95		11,898.75
561 Tuition To Other School Districts Within the State	172,935.10	172,935.10		345,870.20
562 Tuition To Pennsylvania Charter Schools	34,546.33	144,570.56		179,116.89
580 Travel	631.35	411.62		1,042.97
Total Other Purchased Services	\$208,413.58	\$329,515.23		\$537,928.81
600 Supplies				
610 General Supplies	7,392.84	14,131.70		21,524.54
630 Food	83.33	166.67		250.00
640 Books and Periodicals	3,198.26	8,377.07		11,575.33
650 Supplies & Fees – Technology Related	16,325.40	33,466.33		49,791.73
Total Supplies	\$26,999.83	\$56,141.77		\$83,141.60
700 Property				
752 Capital Equipment – Original and Additional		3,127.07		3,127.07
756 Capitalized Technology Equipment – Original	969.00	969.00		1,938.00
Total Property	\$969.00	\$4,096.07		\$5,065.07
800 Other Objects				
810 Dues and Fees	1,465.00	1,465.00		2,930.00
890 Miscellaneous Expenditures	695.00	440.00		1,135.00
Total Other Objects	\$2,160.00	\$1,905.00		\$4,065.00
Total 1240 Academic Support	\$2,351,699.59	\$4,248,443.51	\$626,874.00	\$7,227,017.10

General Fund (10)

	<u>Elementary</u>	<u>Secondary</u>	<u>Federal</u>	<u>Total</u>
1241 Learning Support – Public				
100 Personnel Services – Salaries				
100 Personnel Services – Salaries	1,075,214.37	1,683,781.60		2,758,995.97
Total Personnel Services – Salaries	\$1,075,214.37	\$1,683,781.60		\$2,758,995.97
200 Personnel Services – Employee Benefits				
210 Group Insurance – Contracted Provider	1,457.40	2,520.00		3,977.40
220 Social Security Contributions	79,275.74	125,175.59		204,451.33
230 PSERS Retirement Contributions	354,667.20	558,904.31		913,571.51
250 Unemployment Compensation	388.00			388.00
260 Workers' Compensation	7,663.17	12,000.51		19,663.68
270 Group Insurance – Self-Insurance	228,741.88	430,034.72		658,776.60
Total Personnel Services – Employee Benefits	\$672,193.39	\$1,128,635.13		\$1,800,828.52
300 Purchased Professional and Technical Services				
322 Professional Educational Services – Ius	251,552.77	981,339.73	626,874.00	1,859,766.50
329 Professional Educational Services – Other	43,038.49	56,863.98		99,902.47
340 Technical Services	6,165.00	6,165.00		12,330.00
Total Purchased Professional and Technical Services	\$300,756.26	\$1,044,368.71	\$626,874.00	\$1,971,998.97
500 Other Purchased Services				
510 Student Transportation Services	162.76	9,560.14		9,722.90
561 Tuition To Other School Districts Within the State	172,935.10	172,935.10		345,870.20
562 Tuition To Pennsylvania Charter Schools	34,546.33	144,570.56		179,116.89
580 Travel	444.69	411.62		856.31
Total Other Purchased Services	\$208,088.88	\$327,477.42		\$535,566.30
600 Supplies				
610 General Supplies	7,080.97	14,000.83		21,081.80
640 Books and Periodicals	3,136.64	8,287.73		11,424.37
650 Supplies & Fees – Technology Related	16,325.40	33,466.33		49,791.73
Total Supplies	\$26,543.01	\$55,754.89		\$82,297.90
700 Property				
752 Capital Equipment – Original and Additional		3,127.07		3,127.07
756 Capitalized Technology Equipment – Original	969.00	969.00		1,938.00
Total Property	\$969.00	\$4,096.07		\$5,065.07
800 Other Objects				
810 Dues and Fees	75.00	75.00		150.00
Total Other Objects	\$75.00	\$75.00		\$150.00
Total 1241 Learning Support – Public	\$2,283,839.91	\$4,244,188.82	\$626,874.00	\$7,154,902.73

General Fund (10)

1243 Gifted Support

	<u>Elementary</u>	<u>Secondary</u>	<u>Federal</u>	<u>Total</u>
100 Personnel Services – Salaries				
100 Personnel Services – Salaries	39,349.44			39,349.44
Total Personnel Services – Salaries	\$39,349.44			\$39,349.44
200 Personnel Services – Employee Benefits				
210 Group Insurance – Contracted Provider	52.50			52.50
220 Social Security Contributions	3,006.62			3,006.62
230 PSERS Retirement Contributions	13,154.45			13,154.45
260 Workers' Compensation	280.45			280.45
270 Group Insurance – Self-Insurance	9,149.70			9,149.70
Total Personnel Services – Employee Benefits	\$25,643.72			\$25,643.72
500 Other Purchased Services				
510 Student Transportation Services	138.04	2,037.81		2,175.85
580 Travel	186.66			186.66
Total Other Purchased Services	\$324.70	\$2,037.81		\$2,362.51
600 Supplies				
610 General Supplies	311.87	130.87		442.74
630 Food	83.33	166.67		250.00
640 Books and Periodicals	61.62	89.34		150.96
Total Supplies	\$456.82	\$386.88		\$843.70
800 Other Objects				
810 Dues and Fees	1,390.00	1,390.00		2,780.00
890 Miscellaneous Expenditures	695.00	440.00		1,135.00
Total Other Objects	\$2,085.00	\$1,830.00		\$3,915.00
Total 1243 Gifted Support	\$67,859.68	\$4,254.69		\$72,114.37

General Fund (10)

1290 Special Programs - Other Support

500 Other Purchased Services

	<u>Elementary</u>	<u>Secondary</u>	<u>Federal</u>	<u>Total</u>
563 Tuition To Nonpublic Schools	91,523.30	252,295.70		343,819.00
568 Tuition To Private Residential Rehabilitative Institutions (PRRI) [In-State] and Detention Centers	85,542.21	28,472.40		114,014.61
569 Tuition – Other	5,058.84	33,279.87		38,338.71
594 IU Payment By Withholding for Institutionalized Children’s Programs – Special Classes	501.40	501.39		1,002.79
Total Other Purchased Services	\$182,625.75	\$314,549.36		\$497,175.11
Total 1290 Special Programs - Other Support	\$182,625.75	\$314,549.36		\$497,175.11

General Fund (10)

1300 Vocational Education

400 Purchased Property Services

440 Rentals

Total Purchased Property Services

500 Other Purchased Services

564 Tuition To Career and Technology Centers

Total Other Purchased Services

Total 1300 Vocational Education

	<u>Elementary</u>	<u>Secondary</u>	<u>Federal</u>	<u>Total</u>
		62,327.37		62,327.37
		\$62,327.37		\$62,327.37
		903,457.82		903,457.82
		\$903,457.82		\$903,457.82
		\$965,785.19		\$965,785.19

General Fund (10)

	<u>Elementary</u>	<u>Secondary</u>	<u>Federal</u>	<u>Total</u>
1400 Other Instructional Programs – Elementary / Secondary				
100 Personnel Services – Salaries				
100 Personnel Services – Salaries	23,250.01	14,420.00	22,430.82	60,100.83
Total Personnel Services – Salaries	\$23,250.01	\$14,420.00	\$22,430.82	\$60,100.83
200 Personnel Services – Employee Benefits				
220 Social Security Contributions	1,747.20	1,074.44	1,697.51	4,519.15
230 PSERS Retirement Contributions	10,131.88	4,820.82	3,494.60	18,447.30
260 Workers' Compensation	92.79	102.77	232.78	428.34
Total Personnel Services – Employee Benefits	\$11,971.87	\$5,998.03	\$5,424.89	\$23,394.79
300 Purchased Professional and Technical Services				
390 Other Purchased Professional and Technical Services	4,109.17	5,408.50		9,517.67
Total Purchased Professional and Technical Services	\$4,109.17	\$5,408.50		\$9,517.67
500 Other Purchased Services				
568 Tuition To Private Residential Rehabilitative Institutions (PRRI) [In-State] and Detention Centers		67,255.73		67,255.73
Total Other Purchased Services		\$67,255.73		\$67,255.73
600 Supplies				
610 General Supplies		1,435.68		1,435.68
640 Books and Periodicals		33.92		33.92
Total Supplies		\$1,469.60		\$1,469.60
Total 1400 Other Instructional Programs – Elementary / Secondary	\$39,331.05	\$94,551.86	\$27,855.71	\$161,738.62

General Fund (10)

1420 Summer School

	<u>Elementary</u>	<u>Secondary</u>	<u>Federal</u>	<u>Total</u>
100 Personnel Services – Salaries				
100 Personnel Services – Salaries	15,675.01	4,812.50	22,430.82	42,918.33
Total Personnel Services – Salaries	\$15,675.01	\$4,812.50	\$22,430.82	\$42,918.33
200 Personnel Services – Employee Benefits				
220 Social Security Contributions	1,187.55	359.61	1,697.51	3,244.67
230 PSERS Retirement Contributions	7,760.09	1,608.84	3,494.60	12,863.53
260 Workers' Compensation	38.81	34.30	232.78	305.89
Total Personnel Services – Employee Benefits	\$8,986.45	\$2,002.75	\$5,424.89	\$16,414.09
600 Supplies				
610 General Supplies		1,435.68		1,435.68
640 Books and Periodicals		33.92		33.92
Total Supplies		\$1,469.60		\$1,469.60
Total 1420 Summer School	\$24,661.46	\$8,284.85	\$27,855.71	\$60,802.02

General Fund (10)

1430 Homebound Instruction

100 Personnel Services – Salaries

100 Personnel Services – Salaries

Total Personnel Services – Salaries

200 Personnel Services – Employee Benefits

220 Social Security Contributions

230 PSERS Retirement Contributions

260 Workers' Compensation

Total Personnel Services – Employee Benefits

300 Purchased Professional and Technical Services

390 Other Purchased Professional and Technical Services

Total Purchased Professional and Technical Services

Total 1430 Homebound Instruction

	<u>Elementary</u>	<u>Secondary</u>	<u>Federal</u>	<u>Total</u>
		667.50		667.50
		\$667.50		\$667.50
		50.49		50.49
		223.15		223.15
		4.76		4.76
		\$278.40		\$278.40
	4,109.17	5,408.50		9,517.67
	\$4,109.17	\$5,408.50		\$9,517.67
	\$4,109.17	\$6,354.40		\$10,463.57

LEA : 113361303 Cocalico SD

Printed 11/5/2019 7:06:29 AM

General Fund (10)

1440 Alternative Regular Education Programs

Elementary

Secondary

Federal

Total

500 Other Purchased Services

568 Tuition To Private Residential Rehabilitative Institutions (PRRI) [In-State] and Detention Centers

67,255.73

67,255.73

Total Other Purchased Services

\$67,255.73

\$67,255.73

Total 1440 Alternative Regular Education Programs

\$67,255.73

\$67,255.73

LEA : 113361303 Cocalico SD

Printed 11/5/2019 7:06:29 AM

General Fund (10)

1441 Adjudicated / Court-Placed Programs

Elementary

Secondary

Federal

Total

500 Other Purchased Services

568 Tuition To Private Residential Rehabilitative Institutions (PRRI) [In-State] and Detention Centers

19,876.93

19,876.93

Total Other Purchased Services

\$19,876.93

\$19,876.93

Total 1441 Adjudicated / Court-Placed Programs

\$19,876.93

\$19,876.93

LEA : 113361303 Cocalico SD

Printed 11/5/2019 7:06:29 AM

General Fund (10)

1442 Alternative Education Programs

Elementary

Secondary

Federal

Total

500 Other Purchased Services

568 Tuition To Private Residential Rehabilitative Institutions (PRRI) [In-State] and Detention Centers

47,378.80

47,378.80

Total Other Purchased Services

\$47,378.80

\$47,378.80

Total 1442 Alternative Education Programs

\$47,378.80

\$47,378.80

General Fund (10)

	<u>Elementary</u>	<u>Secondary</u>	<u>Federal</u>	<u>Total</u>
1450 Instructional Programs Outside the Established School Day				
100 Personnel Services – Salaries				
100 Personnel Services – Salaries	7,575.00	8,940.00		16,515.00
Total Personnel Services – Salaries	\$7,575.00	\$8,940.00		\$16,515.00
200 Personnel Services – Employee Benefits				
220 Social Security Contributions	559.65	664.34		1,223.99
230 PSERS Retirement Contributions	2,371.79	2,988.83		5,360.62
260 Workers' Compensation	53.98	63.71		117.69
Total Personnel Services – Employee Benefits	\$2,985.42	\$3,716.88		\$6,702.30
Total 1450 Instructional Programs Outside the Established School Day	\$10,560.42	\$12,656.88		\$23,217.30

General Fund (10)

1800 Pre-Kindergarten

Elementary

Secondary

Federal

Total

100 Personnel Services – Salaries

100 Personnel Services – Salaries

67,810.45

Total Personnel Services – Salaries

\$67,810.45

200 Personnel Services – Employee Benefits

210 Group Insurance – Contracted Provider

126.00

220 Social Security Contributions

5,007.16

230 PSERS Retirement Contributions

22,669.04

260 Workers' Compensation

483.29

270 Group Insurance – Self-Insurance

18,299.35

Total Personnel Services – Employee Benefits

\$46,584.84

600 Supplies

630 Food

3,687.00

Total Supplies

\$3,687.00

Total 1800 Pre-Kindergarten

\$118,082.29

General Fund (10)

1801 Pre-K Instruction

Elementary

Secondary

Federal

Total

100 Personnel Services – Salaries

100 Personnel Services – Salaries

67,810.45

Total Personnel Services – Salaries

\$67,810.45

200 Personnel Services – Employee Benefits

210 Group Insurance – Contracted Provider

126.00

220 Social Security Contributions

5,007.16

230 PSERS Retirement Contributions

22,669.04

260 Workers' Compensation

483.29

270 Group Insurance – Self-Insurance

18,299.35

Total Personnel Services – Employee Benefits

\$46,584.84

600 Supplies

630 Food

3,687.00

Total Supplies

\$3,687.00

Total 1801 Pre-K Instruction

\$118,082.29

General Fund (10)

2000 Support Services

Total

100 Personnel Services – Salaries

100 Personnel Services – Salaries 6,530,224.53

Total Personnel Services – Salaries

\$6,530,224.53

200 Personnel Services – Employee Benefits

210 Group Insurance – Contracted Provider 11,417.70

220 Social Security Contributions 481,117.15

230 PSERS Retirement Contributions 2,177,378.48

240 Tuition Reimbursement 231,015.80

260 Workers' Compensation 46,541.62

270 Group Insurance – Self-Insurance 1,969,655.38

291 Other Retirement Plans 93,257.30

299 All Other Employee Benefits 62,484.18

Total Personnel Services – Employee Benefits

\$5,072,867.61

300 Purchased Professional and Technical Services

310 Official / Administrative Services 49,070.80

322 Professional Educational Services – Ius 60,006.75

329 Professional Educational Services – Other 121,166.03

330 Other Professional Services 122,976.91

340 Technical Services 99,122.56

350 Security / Safety Services 59,999.35

360 Employee Training and Development Services 42,815.12

390 Other Purchased Professional and Technical Services 25,011.40

Total Purchased Professional and Technical Services

\$580,168.92

400 Purchased Property Services

410 Cleaning Services 41,089.49

420 Utility Services 75,504.58

430 Repairs and Maintenance Services 259,958.13

Total Purchased Property Services

\$376,552.20

500 Other Purchased Services

513 Contracted Carriers 2,337,878.87

519 Student Transportation Services From Other Sources 3,337.80

520 Insurance – General 377.00

521 Fire Insurance 81,248.00

522 Automotive Liability Insurance 8,598.00

523 General Property and Liability Insurance 7,180.00

530 Communications 121,992.99

549 Other Advertising/Public Relations 6,837.38

550 Printing and Binding 38,286.46

580 Travel 29,397.76

595 IU Payments By Withholding 23,607.27

Total Other Purchased Services

\$2,658,741.53

600 Supplies

610 General Supplies 317,114.93

620 Energy 576,233.19

LEA : 113361303 Cocalico SD

Printed 11/5/2019 7:06:37 AM

General Fund (10)

2000 Support Services

Total

600 Supplies	
630 Food	19,094.15
640 Books and Periodicals	38,110.12
650 Supplies & Fees – Technology Related	166,706.53
Total Supplies	\$1,117,258.92
700 Property	
752 Capital Equipment – Original and Additional	44,475.19
756 Capitalized Technology Equipment – Original	3,155.63
762 Capitalized Equipment - Replacement	4,588.88
766 Capitalized Technology Equipment – Replacement	15,979.39
Total Property	\$68,199.09
800 Other Objects	
810 Dues and Fees	29,634.02
890 Miscellaneous Expenditures	16,940.29
Total Other Objects	\$46,574.31
Total 2000 Support Services	\$16,450,587.11

General Fund (10)

	<u>Elementary</u>	<u>Secondary</u>	<u>Federal</u>	<u>Total</u>
2100 Support Services – Students				
100 Personnel Services – Salaries				
100 Personnel Services – Salaries	365,302.78	576,928.18		1,140,757.67
Total Personnel Services – Salaries	\$365,302.78	\$576,928.18		\$1,140,757.67
200 Personnel Services – Employee Benefits				
210 Group Insurance – Contracted Provider	642.60	894.60		1,822.80
220 Social Security Contributions	27,193.28	42,045.41		83,932.67
230 PSERS Retirement Contributions	125,658.08	196,404.13		386,725.24
260 Workers' Compensation	2,603.55	4,111.83		8,130.30
270 Group Insurance – Self-Insurance	96,071.61	132,670.29		288,162.23
Total Personnel Services – Employee Benefits	\$252,169.12	\$376,126.26		\$768,773.24
300 Purchased Professional and Technical Services				
330 Other Professional Services	23,693.00	32,662.00		56,355.00
390 Other Purchased Professional and Technical Services		205.58		205.58
Total Purchased Professional and Technical Services	\$23,693.00	\$32,867.58		\$56,560.58
400 Purchased Property Services				
430 Repairs and Maintenance Services	802.86	3,902.82		4,705.68
Total Purchased Property Services	\$802.86	\$3,902.82		\$4,705.68
500 Other Purchased Services				
580 Travel	776.59	867.77		3,909.25
Total Other Purchased Services	\$776.59	\$867.77		\$3,909.25
600 Supplies				
610 General Supplies	7,563.22	11,614.97		19,528.18
630 Food		380.00		384.00
640 Books and Periodicals	643.23	44.96		688.19
650 Supplies & Fees – Technology Related	618.88	1,149.89	5,171.50	7,576.25
Total Supplies	\$8,825.33	\$13,189.82	\$5,171.50	\$28,176.62
700 Property				
752 Capital Equipment – Original and Additional		950.94		950.94
756 Capitalized Technology Equipment – Original	725.00	724.99		1,449.99
766 Capitalized Technology Equipment – Replacement	2,347.49	2,347.48		4,694.97
Total Property	\$3,072.49	\$4,023.41		\$7,095.90
800 Other Objects				
810 Dues and Fees	999.50	1,722.50		3,173.41
Total Other Objects	\$999.50	\$1,722.50		\$3,173.41
Total 2100 Support Services – Students	\$655,641.67	\$1,009,628.34	\$5,171.50	\$2,013,152.35

General Fund (10)

	<u>Elementary</u>	<u>Secondary</u>	<u>Federal</u>	<u>Total</u>
2120 Guidance Services				
100 Personnel Services – Salaries				
100 Personnel Services – Salaries	237,109.60	448,735.00		685,844.60
Total Personnel Services – Salaries	\$237,109.60	\$448,735.00		\$685,844.60
200 Personnel Services – Employee Benefits				
210 Group Insurance – Contracted Provider	441.00	693.00		1,134.00
220 Social Security Contributions	17,739.30	32,591.43		50,330.73
230 PSERS Retirement Contributions	79,265.98	150,012.04		229,278.02
260 Workers' Compensation	1,689.90	3,198.19		4,888.09
270 Group Insurance – Self-Insurance	64,047.73	100,646.42		164,694.15
Total Personnel Services – Employee Benefits	\$163,183.91	\$287,141.08		\$450,324.99
300 Purchased Professional and Technical Services				
330 Other Professional Services	15,788.00	24,757.00		40,545.00
390 Other Purchased Professional and Technical Services		205.58		205.58
Total Purchased Professional and Technical Services	\$15,788.00	\$24,962.58		\$40,750.58
400 Purchased Property Services				
430 Repairs and Maintenance Services		3,099.96		3,099.96
Total Purchased Property Services		\$3,099.96		\$3,099.96
500 Other Purchased Services				
580 Travel	258.23	349.41		607.64
Total Other Purchased Services	\$258.23	\$349.41		\$607.64
600 Supplies				
610 General Supplies	3,905.97	7,957.72		11,863.69
630 Food		380.00		380.00
640 Books and Periodicals	643.23	44.96		688.19
650 Supplies & Fees – Technology Related	52.98	584.00	5,171.50	5,808.48
Total Supplies	\$4,602.18	\$8,966.68	\$5,171.50	\$18,740.36
700 Property				
752 Capital Equipment – Original and Additional		950.94		950.94
766 Capitalized Technology Equipment – Replacement	1,449.99	1,449.99		2,899.98
Total Property	\$1,449.99	\$2,400.93		\$3,850.92
800 Other Objects				
810 Dues and Fees	527.50	1,250.50		1,778.00
Total Other Objects	\$527.50	\$1,250.50		\$1,778.00
Total 2120 Guidance Services	\$422,919.41	\$776,906.14	\$5,171.50	\$1,204,997.05

General Fund (10)

	<u>Elementary</u>	<u>Secondary</u>	<u>Federal</u>	<u>Total</u>
2140 Psychological Services				
100 Personnel Services – Salaries				
100 Personnel Services – Salaries	128,193.18	128,193.18		256,386.36
Total Personnel Services – Salaries	\$128,193.18	\$128,193.18		\$256,386.36
200 Personnel Services – Employee Benefits				
210 Group Insurance – Contracted Provider	201.60	201.60		403.20
220 Social Security Contributions	9,453.98	9,453.98		18,907.96
230 PSERS Retirement Contributions	46,392.10	46,392.09		92,784.19
260 Workers' Compensation	913.65	913.64		1,827.29
270 Group Insurance – Self-Insurance	32,023.88	32,023.87		64,047.75
Total Personnel Services – Employee Benefits	\$88,985.21	\$88,985.18		\$177,970.39
300 Purchased Professional and Technical Services				
330 Other Professional Services	7,905.00	7,905.00		15,810.00
Total Purchased Professional and Technical Services	\$7,905.00	\$7,905.00		\$15,810.00
400 Purchased Property Services				
430 Repairs and Maintenance Services	802.86	802.86		1,605.72
Total Purchased Property Services	\$802.86	\$802.86		\$1,605.72
500 Other Purchased Services				
580 Travel	518.36	518.36		1,036.72
Total Other Purchased Services	\$518.36	\$518.36		\$1,036.72
600 Supplies				
610 General Supplies	3,657.25	3,657.25		7,314.50
650 Supplies & Fees – Technology Related	565.90	565.89		1,131.79
Total Supplies	\$4,223.15	\$4,223.14		\$8,446.29
700 Property				
756 Capitalized Technology Equipment – Original	725.00	724.99		1,449.99
766 Capitalized Technology Equipment – Replacement	897.50	897.49		1,794.99
Total Property	\$1,622.50	\$1,622.48		\$3,244.98
800 Other Objects				
810 Dues and Fees	472.00	472.00		944.00
Total Other Objects	\$472.00	\$472.00		\$944.00
Total 2140 Psychological Services	\$232,722.26	\$232,722.20		\$465,444.46

General Fund (10)

	<u>Elementary</u>	<u>Secondary</u>	<u>Federal</u>	<u>Total</u>
2160 Social Work Services				
100 Personnel Services – Salaries				
100 Personnel Services – Salaries				136,646.00
Total Personnel Services – Salaries				\$136,646.00
200 Personnel Services – Employee Benefits				
210 Group Insurance – Contracted Provider				231.00
220 Social Security Contributions				10,124.64
230 PSERS Retirement Contributions				45,680.82
260 Workers' Compensation				973.89
270 Group Insurance – Self-Insurance				41,120.98
Total Personnel Services – Employee Benefits				\$98,131.33
500 Other Purchased Services				
580 Travel				2,198.31
Total Other Purchased Services				\$2,198.31
600 Supplies				
610 General Supplies				349.99
650 Supplies & Fees – Technology Related				635.98
Total Supplies				\$985.97
800 Other Objects				
810 Dues and Fees				150.00
Total Other Objects				\$150.00
Total 2160 Social Work Services				\$238,111.61

General Fund (10)

	<u>Elementary</u>	<u>Secondary</u>	<u>Federal</u>	<u>Total</u>
2170 Student Accounting Services				
100 Personnel Services – Salaries				
100 Personnel Services – Salaries				61,880.71
Total Personnel Services – Salaries				\$61,880.71
200 Personnel Services – Employee Benefits				
210 Group Insurance – Contracted Provider				54.60
220 Social Security Contributions				4,569.34
230 PSERS Retirement Contributions				18,982.21
260 Workers' Compensation				441.03
270 Group Insurance – Self-Insurance				18,299.35
Total Personnel Services – Employee Benefits				\$42,346.53
500 Other Purchased Services				
580 Travel				66.58
Total Other Purchased Services				\$66.58
600 Supplies				
630 Food				4.00
Total Supplies				\$4.00
800 Other Objects				
810 Dues and Fees				301.41
Total Other Objects				\$301.41
Total 2170 Student Accounting Services				\$104,599.23

General Fund (10)

2200 Support Services – Instructional Staff

	<u>Elementary</u>	<u>Secondary</u>	<u>Federal</u>	<u>Total</u>
100 Personnel Services – Salaries				
100 Personnel Services – Salaries	574,328.66	547,233.46	50,079.22	1,171,641.34
Total Personnel Services – Salaries	\$574,328.66	\$547,233.46	\$50,079.22	\$1,171,641.34
200 Personnel Services – Employee Benefits				
210 Group Insurance – Contracted Provider	780.15	654.15	94.50	1,528.80
220 Social Security Contributions	41,965.18	41,219.87	3,705.07	86,890.12
230 PSERS Retirement Contributions	192,955.07	189,467.82	8,370.72	390,793.61
240 Tuition Reimbursement	68,039.75	111,449.95		179,489.70
260 Workers' Compensation	4,102.60	3,890.90	356.92	8,350.42
270 Group Insurance – Self-Insurance	137,245.16	118,945.79	13,058.97	269,249.92
291 Other Retirement Plans	17,480.00			17,480.00
299 All Other Employee Benefits	4,537.40	4,537.38		9,074.78
Total Personnel Services – Employee Benefits	\$467,105.31	\$470,165.86	\$25,586.18	\$962,857.35
300 Purchased Professional and Technical Services				
322 Professional Educational Services – Ius	3,600.00	2,700.00	5,400.00	11,700.00
329 Professional Educational Services – Other	56,784.75	39,544.52	20,066.61	116,395.88
360 Employee Training and Development Services	12,014.36	5,607.00	1,031.64	18,653.00
Total Purchased Professional and Technical Services	\$72,399.11	\$47,851.52	\$26,498.25	\$146,748.88
400 Purchased Property Services				
430 Repairs and Maintenance Services	1,819.86	5,535.25		7,355.11
Total Purchased Property Services	\$1,819.86	\$5,535.25		\$7,355.11
500 Other Purchased Services				
550 Printing and Binding	93.75	93.75		187.50
580 Travel	2,925.25	4,645.57		7,570.82
Total Other Purchased Services	\$3,019.00	\$4,739.32		\$7,758.32
600 Supplies				
610 General Supplies	4,101.68	6,482.00		10,583.68
630 Food	369.25	369.25		738.50
640 Books and Periodicals	14,201.25	17,219.44	3,740.41	35,161.10
650 Supplies & Fees – Technology Related	14,160.69	29,249.84		43,410.53
Total Supplies	\$32,832.87	\$53,320.53	\$3,740.41	\$89,893.81
800 Other Objects				
810 Dues and Fees	517.00	1,158.34		1,675.34
Total Other Objects	\$517.00	\$1,158.34		\$1,675.34
Total 2200 Support Services – Instructional Staff	\$1,152,021.81	\$1,130,004.28	\$105,904.06	\$2,387,930.15

General Fund (10)

	<u>Elementary</u>	<u>Secondary</u>	<u>Federal</u>	<u>Total</u>
2240 Computer-Assisted Instruction Support Services				
100 Personnel Services – Salaries				
100 Personnel Services – Salaries	36,107.00	36,107.00		72,214.00
Total Personnel Services – Salaries	\$36,107.00	\$36,107.00		\$72,214.00
200 Personnel Services – Employee Benefits				
210 Group Insurance – Contracted Provider	73.50	73.50		147.00
220 Social Security Contributions	2,635.37	2,635.36		5,270.73
230 PSERS Retirement Contributions	12,070.59	12,070.59		24,141.18
260 Workers' Compensation	257.34	257.34		514.68
270 Group Insurance – Self-Insurance	9,149.68	9,149.67		18,299.35
Total Personnel Services – Employee Benefits	\$24,186.48	\$24,186.46		\$48,372.94
Total 2240 Computer-Assisted Instruction Support Services	\$60,293.48	\$60,293.46		\$120,586.94

General Fund (10)

	<u>Elementary</u>	<u>Secondary</u>	<u>Federal</u>	<u>Total</u>
2250 School Library Services				
100 Personnel Services – Salaries				
100 Personnel Services – Salaries	282,718.08	194,877.38		477,595.46
Total Personnel Services – Salaries	\$282,718.08	\$194,877.38		\$477,595.46
200 Personnel Services – Employee Benefits				
210 Group Insurance – Contracted Provider	478.80	352.80		831.60
220 Social Security Contributions	20,595.31	14,168.69		34,764.00
230 PSERS Retirement Contributions	93,826.29	65,020.90		158,847.19
260 Workers' Compensation	2,014.97	1,388.91		3,403.88
270 Group Insurance – Self-Insurance	91,496.75	73,197.40		164,694.15
291 Other Retirement Plans	17,480.00			17,480.00
Total Personnel Services – Employee Benefits	\$225,892.12	\$154,128.70		\$380,020.82
300 Purchased Professional and Technical Services				
329 Professional Educational Services – Other	33,317.85	2,915.38		36,233.23
Total Purchased Professional and Technical Services	\$33,317.85	\$2,915.38		\$36,233.23
400 Purchased Property Services				
430 Repairs and Maintenance Services	1,017.00	4,732.39		5,749.39
Total Purchased Property Services	\$1,017.00	\$4,732.39		\$5,749.39
500 Other Purchased Services				
580 Travel	9.58	96.50		106.08
Total Other Purchased Services	\$9.58	\$96.50		\$106.08
600 Supplies				
610 General Supplies	2,168.26	4,155.93		6,324.19
640 Books and Periodicals	14,048.98	17,067.18		31,116.16
650 Supplies & Fees – Technology Related	9,332.22	24,421.39		33,753.61
Total Supplies	\$25,549.46	\$45,644.50		\$71,193.96
800 Other Objects				
810 Dues and Fees	180.00	821.34		1,001.34
Total Other Objects	\$180.00	\$821.34		\$1,001.34
Total 2250 School Library Services	\$568,684.09	\$403,216.19		\$971,900.28

General Fund (10)

	<u>Elementary</u>	<u>Secondary</u>	<u>Federal</u>	<u>Total</u>
2260 Instruction and Curriculum Development Services				
100 Personnel Services – Salaries				
100 Personnel Services – Salaries	165,754.67	226,810.99	50,079.22	442,644.88
Total Personnel Services – Salaries	\$165,754.67	\$226,810.99	\$50,079.22	\$442,644.88
200 Personnel Services – Employee Benefits				
210 Group Insurance – Contracted Provider	164.85	164.85	94.50	424.20
220 Social Security Contributions	12,575.32	17,125.70	3,705.07	33,406.09
230 PSERS Retirement Contributions	59,585.19	79,996.73	8,370.72	147,952.64
260 Workers' Compensation	1,181.36	1,616.50	356.92	3,154.78
270 Group Insurance – Self-Insurance	27,449.05	27,449.05	13,058.97	67,957.07
299 All Other Employee Benefits	2,845.77	2,845.76		5,691.53
Total Personnel Services – Employee Benefits	\$103,801.54	\$129,198.59	\$25,586.18	\$258,586.31
300 Purchased Professional and Technical Services				
329 Professional Educational Services – Other	11,116.88	9,540.30		20,657.18
Total Purchased Professional and Technical Services	\$11,116.88	\$9,540.30		\$20,657.18
400 Purchased Property Services				
430 Repairs and Maintenance Services	802.86	802.86		1,605.72
Total Purchased Property Services	\$802.86	\$802.86		\$1,605.72
500 Other Purchased Services				
550 Printing and Binding	93.75	93.75		187.50
580 Travel	1,665.66	1,665.64		3,331.30
Total Other Purchased Services	\$1,759.41	\$1,759.39		\$3,518.80
600 Supplies				
610 General Supplies	696.16	696.15		1,392.31
630 Food	46.25	46.25		92.50
650 Supplies & Fees – Technology Related	184.00	183.99		367.99
Total Supplies	\$926.41	\$926.39		\$1,852.80
800 Other Objects				
810 Dues and Fees	337.00	337.00		674.00
Total Other Objects	\$337.00	\$337.00		\$674.00
Total 2260 Instruction and Curriculum Development Services	\$284,498.77	\$369,375.52	\$75,665.40	\$729,539.69

General Fund (10)

2270 Instructional Staff Professional Development Services	<u>Elementary</u>	<u>Secondary</u>	<u>Federal</u>	<u>Total</u>
100 Personnel Services – Salaries				
100 Personnel Services – Salaries	41,788.91	41,478.09		83,267.00
Total Personnel Services – Salaries	\$41,788.91	\$41,478.09		\$83,267.00
200 Personnel Services – Employee Benefits				
220 Social Security Contributions	2,537.58	3,668.53		6,206.11
230 PSERS Retirement Contributions	11,440.01	16,346.61		27,786.62
240 Tuition Reimbursement	68,039.75	111,449.95		179,489.70
260 Workers' Compensation	307.11	286.34		593.45
Total Personnel Services – Employee Benefits	\$82,324.45	\$131,751.43		\$214,075.88
300 Purchased Professional and Technical Services				
322 Professional Educational Services – Ius	3,600.00	2,700.00	5,400.00	11,700.00
329 Professional Educational Services – Other	12,350.02	27,088.84	20,066.61	59,505.47
360 Employee Training and Development Services	12,014.36	5,607.00	1,031.64	18,653.00
Total Purchased Professional and Technical Services	\$27,964.38	\$35,395.84	\$26,498.25	\$89,858.47
500 Other Purchased Services				
580 Travel	977.45	2,610.88		3,588.33
Total Other Purchased Services	\$977.45	\$2,610.88		\$3,588.33
600 Supplies				
610 General Supplies	1,131.62	1,524.29		2,655.91
630 Food	323.00	323.00		646.00
640 Books and Periodicals			3,740.41	3,740.41
650 Supplies & Fees – Technology Related	4,644.47	4,644.46		9,288.93
Total Supplies	\$6,099.09	\$6,491.75	\$3,740.41	\$16,331.25
Total 2270 Instructional Staff Professional Development Services	\$159,154.28	\$217,727.99	\$30,238.66	\$407,120.93

General Fund (10)

	<u>Elementary</u>	<u>Secondary</u>	<u>Federal</u>	<u>Total</u>
2290 Other Instructional Staff Services				
100 Personnel Services – Salaries				
100 Personnel Services – Salaries	47,960.00	47,960.00		95,920.00
Total Personnel Services – Salaries	\$47,960.00	\$47,960.00		\$95,920.00
200 Personnel Services – Employee Benefits				
210 Group Insurance – Contracted Provider	63.00	63.00		126.00
220 Social Security Contributions	3,621.60	3,621.59		7,243.19
230 PSERS Retirement Contributions	16,032.99	16,032.99		32,065.98
260 Workers' Compensation	341.82	341.81		683.63
270 Group Insurance – Self-Insurance	9,149.68	9,149.67		18,299.35
299 All Other Employee Benefits	1,691.63	1,691.62		3,383.25
Total Personnel Services – Employee Benefits	\$30,900.72	\$30,900.68		\$61,801.40
500 Other Purchased Services				
580 Travel	272.56	272.55		545.11
Total Other Purchased Services	\$272.56	\$272.55		\$545.11
600 Supplies				
610 General Supplies	105.64	105.63		211.27
640 Books and Periodicals	152.27	152.26		304.53
Total Supplies	\$257.91	\$257.89		\$515.80
Total 2290 Other Instructional Staff Services	\$79,391.19	\$79,391.12		\$158,782.31

General Fund (10)

	<u>Elementary</u>	<u>Secondary</u>	<u>Federal</u>	<u>Total</u>
2300 Support Services – Administration				
100 Personnel Services – Salaries				
100 Personnel Services – Salaries	476,753.69	804,840.07		1,846,460.29
Total Personnel Services – Salaries	\$476,753.69	\$804,840.07		\$1,846,460.29
200 Personnel Services – Employee Benefits				
210 Group Insurance – Contracted Provider	1,255.80	1,906.80		4,573.80
220 Social Security Contributions	35,767.17	59,364.32		136,627.64
230 PSERS Retirement Contributions	157,818.83	268,331.24		614,090.38
260 Workers' Compensation	3,397.88	5,736.18		13,159.93
270 Group Insurance – Self-Insurance	109,796.10	276,320.18		514,211.73
291 Other Retirement Plans	6,188.68	8,715.88		22,620.08
299 All Other Employee Benefits	10,061.08	10,061.08		32,580.19
Total Personnel Services – Employee Benefits	\$324,285.54	\$630,435.68		\$1,337,863.75
300 Purchased Professional and Technical Services				
310 Official / Administrative Services				49,070.80
330 Other Professional Services				60,489.27
390 Other Purchased Professional and Technical Services				4,185.00
Total Purchased Professional and Technical Services				\$113,745.07
400 Purchased Property Services				
430 Repairs and Maintenance Services				7,260.96
Total Purchased Property Services				\$7,260.96
500 Other Purchased Services				
520 Insurance – General				377.00
530 Communications				6,276.10
549 Other Advertising/Public Relations				1,595.97
550 Printing and Binding	1,257.30	6,213.50		7,470.80
580 Travel	418.98	628.73		5,415.69
Total Other Purchased Services	\$1,676.28	\$6,842.23		\$21,135.56
600 Supplies				
610 General Supplies	7,965.53	18,651.26		41,108.67
630 Food	3,109.66	5,398.48		16,689.40
640 Books and Periodicals	945.79	200.41		2,260.83
650 Supplies & Fees – Technology Related	953.97	953.97		2,861.91
Total Supplies	\$12,974.95	\$25,204.12		\$62,920.81
700 Property				
752 Capital Equipment – Original and Additional		14,975.00		14,975.00
756 Capitalized Technology Equipment – Original	969.00			969.00
766 Capitalized Technology Equipment – Replacement		2,252.18		3,401.79
Total Property	\$969.00	\$17,227.18		\$19,345.79
800 Other Objects				
810 Dues and Fees	2,308.00	3,176.00		21,472.06
Total Other Objects	\$2,308.00	\$3,176.00		\$21,472.06
Total 2300 Support Services – Administration	\$818,967.46	\$1,487,725.28		\$3,430,204.29

General Fund (10)

2310 Board Services

Elementary

Secondary

Federal

Total

300 Purchased Professional and Technical Services

330 Other Professional Services 40,500.00

390 Other Purchased Professional and Technical Services 2,435.00

Total Purchased Professional and Technical Services \$42,935.00

500 Other Purchased Services

520 Insurance – General 203.00

549 Other Advertising/Public Relations 1,595.97

580 Travel 877.44

Total Other Purchased Services \$2,676.41

600 Supplies

610 General Supplies 135.62

630 Food 3,297.38

Total Supplies \$3,433.00

800 Other Objects

810 Dues and Fees 13,374.06

Total Other Objects \$13,374.06

Total 2310 Board Services \$62,418.47

General Fund (10)

2320 Board Treasurer Services

Elementary

Secondary

Federal

Total

500 Other Purchased Services

520 Insurance – General

174.00

Total Other Purchased Services

\$174.00

Total 2320 Board Treasurer Services

\$174.00

General Fund (10)

2330 Tax Assessment and Collection Services

Elementary

Secondary

Federal

Total

100 Personnel Services – Salaries

100 Personnel Services – Salaries

39,811.07

Total Personnel Services – Salaries

\$39,811.07

200 Personnel Services – Employee Benefits

210 Group Insurance – Contracted Provider

50.40

220 Social Security Contributions

2,867.43

230 PSERS Retirement Contributions

13,308.90

260 Workers' Compensation

283.74

270 Group Insurance – Self-Insurance

18,299.35

Total Personnel Services – Employee Benefits

\$34,809.82

300 Purchased Professional and Technical Services

310 Official / Administrative Services

49,070.80

Total Purchased Professional and Technical Services

\$49,070.80

500 Other Purchased Services

530 Communications

6,276.10

Total Other Purchased Services

\$6,276.10

600 Supplies

610 General Supplies

3,962.24

Total Supplies

\$3,962.24

Total 2330 Tax Assessment and Collection Services

\$133,930.03

General Fund (10)

2350 Legal and Accounting Services

Elementary

Secondary

Federal

Total

300 Purchased Professional and Technical Services

330 Other Professional Services

19,989.27

Total Purchased Professional and Technical Services

\$19,989.27

Total 2350 Legal and Accounting Services

\$19,989.27

General Fund (10)

2360 Office of the Superintendent / Executive Director Services

Elementary

Secondary

Federal

Total

100 Personnel Services – Salaries

100 Personnel Services – Salaries 525,055.46

Total Personnel Services – Salaries \$525,055.46

200 Personnel Services – Employee Benefits

210 Group Insurance – Contracted Provider 1,360.80

220 Social Security Contributions 38,628.72

230 PSERS Retirement Contributions 174,631.41

260 Workers' Compensation 3,742.13

270 Group Insurance – Self-Insurance 109,796.10

291 Other Retirement Plans 7,715.52

299 All Other Employee Benefits 12,458.03

Total Personnel Services – Employee Benefits \$348,332.71

300 Purchased Professional and Technical Services

390 Other Purchased Professional and Technical Services 1,750.00

Total Purchased Professional and Technical Services \$1,750.00

400 Purchased Property Services

430 Repairs and Maintenance Services 7,260.96

Total Purchased Property Services \$7,260.96

500 Other Purchased Services

580 Travel 3,490.54

Total Other Purchased Services \$3,490.54

600 Supplies

610 General Supplies 5,302.35

630 Food 4,883.88

640 Books and Periodicals 1,114.63

650 Supplies & Fees – Technology Related 953.97

Total Supplies \$12,254.83

700 Property

766 Capitalized Technology Equipment – Replacement 1,149.61

Total Property \$1,149.61

800 Other Objects

810 Dues and Fees 2,614.00

Total Other Objects \$2,614.00

Total 2360 Office of the Superintendent / Executive Director Services \$901,908.11

General Fund (10)

2380 Office of the Principal Services

	<u>Elementary</u>	<u>Secondary</u>	<u>Federal</u>	<u>Total</u>
100 Personnel Services – Salaries				
100 Personnel Services – Salaries	476,753.69	804,840.07		1,281,593.76
Total Personnel Services – Salaries	\$476,753.69	\$804,840.07		\$1,281,593.76
200 Personnel Services – Employee Benefits				
210 Group Insurance – Contracted Provider	1,255.80	1,906.80		3,162.60
220 Social Security Contributions	35,767.17	59,364.32		95,131.49
230 PSERS Retirement Contributions	157,818.83	268,331.24		426,150.07
260 Workers' Compensation	3,397.88	5,736.18		9,134.06
270 Group Insurance – Self-Insurance	109,796.10	276,320.18		386,116.28
291 Other Retirement Plans	6,188.68	8,715.88		14,904.56
299 All Other Employee Benefits	10,061.08	10,061.08		20,122.16
Total Personnel Services – Employee Benefits	\$324,285.54	\$630,435.68		\$954,721.22
500 Other Purchased Services				
550 Printing and Binding	1,257.30	6,213.50		7,470.80
580 Travel	418.98	628.73		1,047.71
Total Other Purchased Services	\$1,676.28	\$6,842.23		\$8,518.51
600 Supplies				
610 General Supplies	7,965.53	18,651.26		26,616.79
630 Food	3,109.66	5,398.48		8,508.14
640 Books and Periodicals	945.79	200.41		1,146.20
650 Supplies & Fees – Technology Related	953.97	953.97		1,907.94
Total Supplies	\$12,974.95	\$25,204.12		\$38,179.07
700 Property				
752 Capital Equipment – Original and Additional		14,975.00		14,975.00
756 Capitalized Technology Equipment – Original	969.00			969.00
766 Capitalized Technology Equipment – Replacement		2,252.18		2,252.18
Total Property	\$969.00	\$17,227.18		\$18,196.18
800 Other Objects				
810 Dues and Fees	2,308.00	3,176.00		5,484.00
Total Other Objects	\$2,308.00	\$3,176.00		\$5,484.00
Total 2380 Office of the Principal Services	\$818,967.46	\$1,487,725.28		\$2,306,692.74

LEA : 113361303 Cocalico SD

Printed 11/5/2019 7:06:37 AM

General Fund (10)

2390 Other Administration Services

Elementary

Secondary

Federal

Total

600 Supplies

610 General Supplies

5,091.67

Total Supplies

\$5,091.67

Total 2390 Other Administration Services

\$5,091.67

General Fund (10)

	<u>Elementary</u>	<u>Secondary</u>	<u>Federal</u>	<u>Total</u>
2400 Support Services – Pupil Health				
100 Personnel Services – Salaries				
100 Personnel Services – Salaries				319,069.00
Total Personnel Services – Salaries				\$319,069.00
200 Personnel Services – Employee Benefits				
210 Group Insurance – Contracted Provider				579.60
220 Social Security Contributions				23,107.24
230 PSERS Retirement Contributions				106,664.68
260 Workers' Compensation				2,274.03
270 Group Insurance – Self-Insurance				128,095.47
Total Personnel Services – Employee Benefits				\$260,721.02
300 Purchased Professional and Technical Services				
329 Professional Educational Services – Other				4,770.15
330 Other Professional Services				1,866.64
Total Purchased Professional and Technical Services				\$6,636.79
500 Other Purchased Services				
580 Travel				239.58
Total Other Purchased Services				\$239.58
600 Supplies				
610 General Supplies				5,872.18
Total Supplies				\$5,872.18
700 Property				
762 Capitalized Equipment - Replacement				2,795.00
Total Property				\$2,795.00
800 Other Objects				
810 Dues and Fees				130.00
Total Other Objects				\$130.00
Total 2400 Support Services – Pupil Health				\$595,463.57

General Fund (10)

2420 Medical Services

Elementary

Secondary

Federal

Total

300 Purchased Professional and Technical Services

330 Other Professional Services

1,802.64

Total Purchased Professional and Technical Services

\$1,802.64

600 Supplies

610 General Supplies

3,916.45

Total Supplies

\$3,916.45

Total 2420 Medical Services

\$5,719.09

General Fund (10)

2430 Dental Services

Elementary

Secondary

Federal

Total

300 Purchased Professional and Technical Services

330 Other Professional Services

64.00

Total Purchased Professional and Technical Services

\$64.00

600 Supplies

610 General Supplies

90.00

Total Supplies

\$90.00

Total 2430 Dental Services

\$154.00

General Fund (10)

2440 Nursing Services

Elementary Secondary Federal Total

100 Personnel Services – Salaries				
100 Personnel Services – Salaries				319,069.00
Total Personnel Services – Salaries				\$319,069.00
200 Personnel Services – Employee Benefits				
210 Group Insurance – Contracted Provider				579.60
220 Social Security Contributions				23,107.24
230 PSERS Retirement Contributions				106,664.68
260 Workers' Compensation				2,274.03
270 Group Insurance – Self-Insurance				128,095.47
Total Personnel Services – Employee Benefits				\$260,721.02
300 Purchased Professional and Technical Services				
329 Professional Educational Services – Other				4,770.15
Total Purchased Professional and Technical Services				\$4,770.15
500 Other Purchased Services				
580 Travel				239.58
Total Other Purchased Services				\$239.58
600 Supplies				
610 General Supplies				1,865.73
Total Supplies				\$1,865.73
700 Property				
762 Capitalized Equipment - Replacement				2,795.00
Total Property				\$2,795.00
800 Other Objects				
810 Dues and Fees				130.00
Total Other Objects				\$130.00
Total 2440 Nursing Services				\$589,590.48

General Fund (10)

	<u>Elementary</u>	<u>Secondary</u>	<u>Federal</u>	<u>Total</u>
2500 Support Services – Business				
100 Personnel Services – Salaries				
100 Personnel Services – Salaries				334,766.10
Total Personnel Services – Salaries				\$334,766.10
200 Personnel Services – Employee Benefits				
210 Group Insurance – Contracted Provider				655.20
220 Social Security Contributions				24,796.15
230 PSERS Retirement Contributions				111,572.79
260 Workers' Compensation				2,385.92
270 Group Insurance – Self-Insurance				91,496.75
291 Other Retirement Plans				2,446.42
299 All Other Employee Benefits				5,691.53
Total Personnel Services – Employee Benefits				\$239,044.76
300 Purchased Professional and Technical Services				
340 Technical Services				23,900.46
Total Purchased Professional and Technical Services				\$23,900.46
400 Purchased Property Services				
430 Repairs and Maintenance Services				15,575.08
Total Purchased Property Services				\$15,575.08
500 Other Purchased Services				
530 Communications				18,341.72
580 Travel				657.19
Total Other Purchased Services				\$18,998.91
600 Supplies				
610 General Supplies				4,710.41
630 Food				157.56
650 Supplies & Fees – Technology Related				2,917.99
Total Supplies				\$7,785.96
700 Property				
756 Capitalized Technology Equipment – Original				736.64
766 Capitalized Technology Equipment – Replacement				4,504.36
Total Property				\$5,241.00
800 Other Objects				
810 Dues and Fees				714.89
890 Miscellaneous Expenditures				13,705.99
Total Other Objects				\$14,420.88
Total 2500 Support Services – Business				\$659,733.15

General Fund (10)

	<u>Elementary</u>	<u>Secondary</u>	<u>Federal</u>	<u>Total</u>
2510 Fiscal Services				
100 Personnel Services – Salaries				
100 Personnel Services – Salaries				334,766.10
Total Personnel Services – Salaries				\$334,766.10
200 Personnel Services – Employee Benefits				
210 Group Insurance – Contracted Provider				655.20
220 Social Security Contributions				24,796.15
230 PSERS Retirement Contributions				111,572.79
260 Workers' Compensation				2,385.92
270 Group Insurance – Self-Insurance				91,496.75
291 Other Retirement Plans				2,446.42
299 All Other Employee Benefits				5,691.53
Total Personnel Services – Employee Benefits				\$239,044.76
300 Purchased Professional and Technical Services				
340 Technical Services				23,900.46
Total Purchased Professional and Technical Services				\$23,900.46
400 Purchased Property Services				
430 Repairs and Maintenance Services				15,575.08
Total Purchased Property Services				\$15,575.08
500 Other Purchased Services				
530 Communications				18,341.72
580 Travel				657.19
Total Other Purchased Services				\$18,998.91
600 Supplies				
610 General Supplies				4,710.41
630 Food				157.56
650 Supplies & Fees – Technology Related				2,917.99
Total Supplies				\$7,785.96
700 Property				
756 Capitalized Technology Equipment – Original				736.64
766 Capitalized Technology Equipment – Replacement				4,504.36
Total Property				\$5,241.00
800 Other Objects				
810 Dues and Fees				714.89
890 Miscellaneous Expenditures				13,705.99
Total Other Objects				\$14,420.88
Total 2510 Fiscal Services				\$659,733.15

General Fund (10)

2511 Supervision of Fiscal Services - Head of Component

Elementary

Secondary

Federal

Total

100 Personnel Services – Salaries

100 Personnel Services – Salaries

202,650.00

Total Personnel Services – Salaries

\$202,650.00

200 Personnel Services – Employee Benefits

210 Group Insurance – Contracted Provider

504.00

220 Social Security Contributions

15,542.87

230 PSERS Retirement Contributions

67,746.03

260 Workers' Compensation

1,444.31

270 Group Insurance – Self-Insurance

36,598.70

291 Other Retirement Plans

2,446.42

299 All Other Employee Benefits

5,691.53

Total Personnel Services – Employee Benefits

\$129,973.86

500 Other Purchased Services

580 Travel

542.29

Total Other Purchased Services

\$542.29

800 Other Objects

810 Dues and Fees

714.89

Total Other Objects

\$714.89

Total 2511 Supervision of Fiscal Services - Head of Component

\$333,881.04

General Fund (10)

	<u>Elementary</u>	<u>Secondary</u>	<u>Federal</u>	<u>Total</u>
2515 Financial Accounting Services				
100 Personnel Services – Salaries				
100 Personnel Services – Salaries				132,116.10
Total Personnel Services – Salaries				\$132,116.10
200 Personnel Services – Employee Benefits				
210 Group Insurance – Contracted Provider				151.20
220 Social Security Contributions				9,253.28
230 PSERS Retirement Contributions				43,826.76
260 Workers' Compensation				941.61
270 Group Insurance – Self-Insurance				54,898.05
Total Personnel Services – Employee Benefits				\$109,070.90
300 Purchased Professional and Technical Services				
340 Technical Services				23,900.46
Total Purchased Professional and Technical Services				\$23,900.46
400 Purchased Property Services				
430 Repairs and Maintenance Services				15,575.08
Total Purchased Property Services				\$15,575.08
500 Other Purchased Services				
530 Communications				18,341.72
580 Travel				114.90
Total Other Purchased Services				\$18,456.62
600 Supplies				
610 General Supplies				4,710.41
630 Food				157.56
650 Supplies & Fees – Technology Related				2,917.99
Total Supplies				\$7,785.96
700 Property				
756 Capitalized Technology Equipment – Original				736.64
766 Capitalized Technology Equipment – Replacement				4,504.36
Total Property				\$5,241.00
800 Other Objects				
890 Miscellaneous Expenditures				13,705.99
Total Other Objects				\$13,705.99
Total 2515 Financial Accounting Services				\$325,852.11

General Fund (10)

2600 Operation and Maintenance of Plant Services

Elementary Secondary Federal Total

100	<u>Personnel Services – Salaries</u>			
100	Personnel Services – Salaries			1,125,206.80
Total Personnel Services – Salaries				\$1,125,206.80
200	<u>Personnel Services – Employee Benefits</u>			
210	Group Insurance – Contracted Provider			1,528.80
220	Social Security Contributions			81,583.94
230	PSERS Retirement Contributions			375,183.81
260	Workers' Compensation			8,019.47
270	Group Insurance – Self-Insurance			512,381.80
299	All Other Employee Benefits			3,383.25
Total Personnel Services – Employee Benefits				\$982,081.07
300	<u>Purchased Professional and Technical Services</u>			
322	Professional Educational Services – Ius			1,200.00
350	Security / Safety Services			59,999.35
390	Other Purchased Professional and Technical Services			17,433.32
Total Purchased Professional and Technical Services				\$78,632.67
400	<u>Purchased Property Services</u>			
410	Cleaning Services			41,089.49
420	Utility Services			75,504.58
430	Repairs and Maintenance Services			222,524.63
Total Purchased Property Services				\$339,118.70
500	<u>Other Purchased Services</u>			
521	Fire Insurance			81,248.00
522	Automotive Liability Insurance			8,598.00
523	General Property and Liability Insurance			7,180.00
530	Communications			94,304.68
580	Travel			256.28
Total Other Purchased Services				\$191,586.96
600	<u>Supplies</u>			
610	General Supplies	94,699.40	129,983.01	224,682.41
620	Energy			576,233.19
630	Food			180.00
650	Supplies & Fees – Technology Related			5,466.98
Total Supplies				\$806,562.58
700	<u>Property</u>			
752	Capital Equipment – Original and Additional			20,411.50
762	Capitalized Equipment - Replacement			1,793.88
766	Capitalized Technology Equipment – Replacement			2,252.18
Total Property				\$24,457.56
800	<u>Other Objects</u>			
810	Dues and Fees			247.19

LEA : 113361303 Cocalico SD

Printed 11/5/2019 7:06:37 AM

General Fund (10)

2600 Operation and Maintenance of Plant Services

Elementary

Secondary

Federal

Total

800 Other Objects

890 Miscellaneous Expenditures

3,234.30

Total Other Objects

\$3,481.49

Total 2600 Operation and Maintenance of Plant Services

\$94,699.40

\$129,983.01

\$3,551,127.83

General Fund (10)

2610 Supervision of Operation and Maintenance of Plant Services

Elementary

Secondary

Federal

Total

100 Personnel Services – Salaries

100 Personnel Services – Salaries 126,418.13

Total Personnel Services – Salaries \$126,418.13

200 Personnel Services – Employee Benefits

210 Group Insurance – Contracted Provider 176.40

220 Social Security Contributions 9,492.84

230 PSERS Retirement Contributions 42,261.55

260 Workers' Compensation 901.00

270 Group Insurance – Self-Insurance 36,598.70

299 All Other Employee Benefits 3,383.25

Total Personnel Services – Employee Benefits \$92,813.74

400 Purchased Property Services

430 Repairs and Maintenance Services 1,554.12

Total Purchased Property Services \$1,554.12

600 Supplies

610 General Supplies 265.67 265.66 531.33

630 Food 180.00

650 Supplies & Fees – Technology Related 5,147.99

Total Supplies \$265.67 \$265.66 \$5,859.32

700 Property

766 Capitalized Technology Equipment – Replacement 2,252.18

Total Property \$2,252.18

800 Other Objects

810 Dues and Fees 247.19

Total Other Objects \$247.19

Total 2610 Supervision of Operation and Maintenance of Plant Services \$265.67 \$265.66 \$229,144.68

General Fund (10)

	<u>Elementary</u>	<u>Secondary</u>	<u>Federal</u>	<u>Total</u>
2611 Supervision of Operation and Maintenance of Plant Services – Head of Component				
100 Personnel Services – Salaries				
100 Personnel Services – Salaries				126,418.13
Total Personnel Services – Salaries				\$126,418.13
200 Personnel Services – Employee Benefits				
210 Group Insurance – Contracted Provider				176.40
220 Social Security Contributions				9,492.84
230 PSERS Retirement Contributions				42,261.55
260 Workers' Compensation				901.00
270 Group Insurance – Self-Insurance				36,598.70
299 All Other Employee Benefits				3,383.25
Total Personnel Services – Employee Benefits				\$92,813.74
400 Purchased Property Services				
430 Repairs and Maintenance Services				1,554.12
Total Purchased Property Services				\$1,554.12
600 Supplies				
610 General Supplies	265.67	265.66		531.33
630 Food				180.00
650 Supplies & Fees – Technology Related				5,147.99
Total Supplies	\$265.67	\$265.66		\$5,859.32
700 Property				
766 Capitalized Technology Equipment – Replacement				2,252.18
Total Property				\$2,252.18
800 Other Objects				
810 Dues and Fees				247.19
Total Other Objects				\$247.19
Total 2611 Supervision of Operation and Maintenance of Plant Services – Head of Component	\$265.67	\$265.66		\$229,144.68

General Fund (10)

	<u>Elementary</u>	<u>Secondary</u>	<u>Federal</u>	<u>Total</u>
2620 Operation of Buildings Services				
100 Personnel Services – Salaries				
100 Personnel Services – Salaries				998,788.67
Total Personnel Services – Salaries				\$998,788.67
200 Personnel Services – Employee Benefits				
210 Group Insurance – Contracted Provider				1,352.40
220 Social Security Contributions				72,091.10
230 PSERS Retirement Contributions				332,922.26
260 Workers' Compensation				7,118.47
270 Group Insurance – Self-Insurance				475,783.10
Total Personnel Services – Employee Benefits				\$889,267.33
400 Purchased Property Services				
410 Cleaning Services				41,089.49
420 Utility Services				75,504.58
430 Repairs and Maintenance Services				220,970.51
Total Purchased Property Services				\$337,564.58
500 Other Purchased Services				
521 Fire Insurance				81,248.00
522 Automotive Liability Insurance				8,598.00
523 General Property and Liability Insurance				7,180.00
530 Communications				94,304.68
580 Travel				256.28
Total Other Purchased Services				\$191,586.96
600 Supplies				
610 General Supplies	94,079.82	129,363.45		223,443.27
620 Energy				576,233.19
650 Supplies & Fees – Technology Related				318.99
Total Supplies	\$94,079.82	\$129,363.45		\$799,995.45
700 Property				
752 Capital Equipment – Original and Additional				20,411.50
762 Capitalized Equipment - Replacement				1,793.88
Total Property				\$22,205.38
800 Other Objects				
890 Miscellaneous Expenditures				3,234.30
Total Other Objects				\$3,234.30
Total 2620 Operation of Buildings Services	\$94,079.82	\$129,363.45		\$3,242,642.67

General Fund (10)

2660 Safety and Security Services

Elementary

Secondary

Federal

Total

300 Purchased Professional and Technical Services

322 Professional Educational Services – Ius

1,200.00

350 Security / Safety Services

59,999.35

390 Other Purchased Professional and Technical Services

17,433.32

Total Purchased Professional and Technical Services

\$78,632.67

600 Supplies

610 General Supplies

353.91

353.90

707.81

Total Supplies

\$353.91

\$353.90

\$707.81

Total 2660 Safety and Security Services

\$353.91

\$353.90

\$79,340.48

General Fund (10)

2700 Student Transportation Services

Elementary Secondary Federal Total

100	<u>Personnel Services – Salaries</u>			
	100 Personnel Services – Salaries			57,604.06
Total Personnel Services – Salaries				\$57,604.06
200	<u>Personnel Services – Employee Benefits</u>			
	210 Group Insurance – Contracted Provider			88.20
	220 Social Security Contributions			4,268.89
	230 PSERS Retirement Contributions			19,257.00
	260 Workers' Compensation			410.55
	270 Group Insurance – Self-Insurance			18,296.76
	299 All Other Employee Benefits			2,308.28
Total Personnel Services – Employee Benefits				\$44,629.68
400	<u>Purchased Property Services</u>			
	430 Repairs and Maintenance Services			2,536.67
Total Purchased Property Services				\$2,536.67
500	<u>Other Purchased Services</u>			
	513 Contracted Carriers			2,337,878.87
	519 Student Transportation Services From Other Sources			3,337.80
	580 Travel			506.60
Total Other Purchased Services				\$2,341,723.27
600	<u>Supplies</u>			
	610 General Supplies			2,921.82
	630 Food			360.00
	650 Supplies & Fees – Technology Related			169.00
Total Supplies				\$3,450.82
700	<u>Property</u>			
	766 Capitalized Technology Equipment – Replacement			1,126.09
Total Property				\$1,126.09
800	<u>Other Objects</u>			
	810 Dues and Fees			211.94
Total Other Objects				\$211.94
Total 2700 Student Transportation Services				\$2,451,282.53

General Fund (10)

2710 Supervision of Student Transportation Services

Elementary Secondary Federal Total

100	<u>Personnel Services – Salaries</u>				
	100 Personnel Services – Salaries				57,604.06
Total Personnel Services – Salaries					\$57,604.06
200	<u>Personnel Services – Employee Benefits</u>				
	210 Group Insurance – Contracted Provider				88.20
	220 Social Security Contributions				4,268.89
	230 PSERS Retirement Contributions				19,257.00
	260 Workers' Compensation				410.55
	270 Group Insurance – Self-Insurance				18,296.76
	299 All Other Employee Benefits				2,308.28
Total Personnel Services – Employee Benefits					\$44,629.68
400	<u>Purchased Property Services</u>				
	430 Repairs and Maintenance Services				2,536.67
Total Purchased Property Services					\$2,536.67
500	<u>Other Purchased Services</u>				
	580 Travel				506.60
Total Other Purchased Services					\$506.60
600	<u>Supplies</u>				
	610 General Supplies				2,921.82
	630 Food				360.00
	650 Supplies & Fees – Technology Related				169.00
Total Supplies					\$3,450.82
700	<u>Property</u>				
	766 Capitalized Technology Equipment – Replacement				1,126.09
Total Property					\$1,126.09
800	<u>Other Objects</u>				
	810 Dues and Fees				211.94
Total Other Objects					\$211.94
Total 2710 Supervision of Student Transportation Services					\$110,065.86

General Fund (10)

2711 Supervision of Student Transportation Services – Head of Component

Elementary

Secondary

Federal

Total

100 Personnel Services – Salaries

100 Personnel Services – Salaries 57,604.06

Total Personnel Services – Salaries \$57,604.06

200 Personnel Services – Employee Benefits

210 Group Insurance – Contracted Provider 88.20

220 Social Security Contributions 4,268.89

230 PSERS Retirement Contributions 19,257.00

260 Workers' Compensation 410.55

270 Group Insurance – Self-Insurance 18,296.76

299 All Other Employee Benefits 2,308.28

Total Personnel Services – Employee Benefits \$44,629.68

400 Purchased Property Services

430 Repairs and Maintenance Services 2,536.67

Total Purchased Property Services \$2,536.67

500 Other Purchased Services

580 Travel 506.60

Total Other Purchased Services \$506.60

600 Supplies

610 General Supplies 2,921.82

630 Food 360.00

650 Supplies & Fees – Technology Related 169.00

Total Supplies \$3,450.82

700 Property

766 Capitalized Technology Equipment – Replacement 1,126.09

Total Property \$1,126.09

800 Other Objects

810 Dues and Fees 211.94

Total Other Objects \$211.94

Total 2711 Supervision of Student Transportation Services – Head of Component \$110,065.86

LEA : 113361303 Cocalico SD

Printed 11/5/2019 7:06:37 AM

General Fund (10)

2720 Vehicle Operation Services

Elementary

Secondary

Federal

Total

500 Other Purchased Services

513 Contracted Carriers

2,196,815.00

519 Student Transportation Services From Other Sources

3,337.80

Total Other Purchased Services

\$2,200,152.80

Total 2720 Vehicle Operation Services

\$2,200,152.80

LEA : 113361303 Cocalico SD

Printed 11/5/2019 7:06:37 AM

General Fund (10)

2750 Nonpublic Transportation

Elementary

Secondary

Federal

Total

500 Other Purchased Services

513 Contracted Carriers

141,063.87

Total Other Purchased Services

\$141,063.87

Total 2750 Nonpublic Transportation

\$141,063.87

General Fund (10)

2800 Support Services – Central

100 Personnel Services – Salaries

	<u>Elementary</u>	<u>Secondary</u>	<u>Federal</u>	<u>Total</u>
100 Personnel Services – Salaries			10,750.00	534,719.27

Total Personnel Services – Salaries			\$10,750.00	\$534,719.27
--	--	--	--------------------	---------------------

200 Personnel Services – Employee Benefits

210 Group Insurance – Contracted Provider			21.00	640.50
220 Social Security Contributions			780.20	39,910.50
230 PSERS Retirement Contributions			1,970.89	173,090.97
240 Tuition Reimbursement				51,526.10
260 Workers' Compensation			105.12	3,811.00
270 Group Insurance – Self-Insurance			4,766.70	147,760.72
291 Other Retirement Plans				50,710.80
299 All Other Employee Benefits				9,446.15

Total Personnel Services – Employee Benefits			\$7,643.91	\$476,896.74
---	--	--	-------------------	---------------------

300 Purchased Professional and Technical Services

322 Professional Educational Services – Ius				47,106.75
330 Other Professional Services				4,266.00
340 Technical Services				75,222.10
360 Employee Training and Development Services				24,162.12
390 Other Purchased Professional and Technical Services				3,187.50

Total Purchased Professional and Technical Services				\$153,944.47
--	--	--	--	---------------------

500 Other Purchased Services

530 Communications				3,070.49
549 Other Advertising/Public Relations				5,241.41
550 Printing and Binding				30,628.16
580 Travel				10,842.35

Total Other Purchased Services				\$49,782.41
---------------------------------------	--	--	--	--------------------

600 Supplies

610 General Supplies				7,707.58
630 Food				584.69
650 Supplies & Fees – Technology Related				104,303.87

Total Supplies				\$112,596.14
-----------------------	--	--	--	---------------------

700 Property

752 Capital Equipment – Original and Additional				8,137.75
---	--	--	--	----------

Total Property				\$8,137.75
-----------------------	--	--	--	-------------------

800 Other Objects

810 Dues and Fees				2,009.19
-------------------	--	--	--	----------

Total Other Objects				\$2,009.19
----------------------------	--	--	--	-------------------

Total 2800 Support Services – Central			\$18,393.91	\$1,338,085.97
--	--	--	--------------------	-----------------------

General Fund (10)

2810 Planning, Research, Development and Evaluation Services

	<u>Elementary</u>	<u>Secondary</u>	<u>Federal</u>	<u>Total</u>
100 Personnel Services – Salaries				
100 Personnel Services – Salaries			10,750.00	395,287.29
Total Personnel Services – Salaries			\$10,750.00	\$395,287.29
200 Personnel Services – Employee Benefits				
210 Group Insurance – Contracted Provider			21.00	464.10
220 Social Security Contributions			780.20	29,396.54
230 PSERS Retirement Contributions			1,970.89	129,683.34
260 Workers' Compensation			105.12	2,817.25
270 Group Insurance – Self-Insurance			4,766.70	111,162.02
291 Other Retirement Plans				50,710.80
299 All Other Employee Benefits				6,062.90
Total Personnel Services – Employee Benefits			\$7,643.91	\$330,296.95
300 Purchased Professional and Technical Services				
322 Professional Educational Services – lus				41,639.75
340 Technical Services				75,181.68
Total Purchased Professional and Technical Services				\$116,821.43
500 Other Purchased Services				
580 Travel				2,424.71
Total Other Purchased Services				\$2,424.71
600 Supplies				
610 General Supplies				3,966.59
630 Food				24.00
650 Supplies & Fees – Technology Related				103,985.88
Total Supplies				\$107,976.47
800 Other Objects				
810 Dues and Fees				1,405.00
Total Other Objects				\$1,405.00
Total 2810 Planning, Research, Development and Evaluation Services			\$18,393.91	\$954,211.85

LEA : 113361303 Cocalico SD

Printed 11/5/2019 7:06:37 AM

General Fund (10)

2820 Information Services

Elementary

Secondary

Federal

Total

500 Other Purchased Services

530 Communications

3,070.49

550 Printing and Binding

30,628.16

Total Other Purchased Services

\$33,698.65

Total 2820 Information Services

\$33,698.65

LEA : 113361303 Cocalico SD

Printed 11/5/2019 7:06:37 AM

General Fund (10)

2823 Public Information Services

Elementary

Secondary

Federal

Total

500 Other Purchased Services

530 Communications

3,070.49

550 Printing and Binding

30,628.16

Total Other Purchased Services

\$33,698.65

Total 2823 Public Information Services

\$33,698.65

General Fund (10)

2830 Staff Services

Elementary Secondary Federal Total

100 Personnel Services – Salaries
100 Personnel Services – Salaries 139,431.98

Total Personnel Services – Salaries \$139,431.98

200 Personnel Services – Employee Benefits
210 Group Insurance – Contracted Provider 176.40
220 Social Security Contributions 10,513.96
230 PSERS Retirement Contributions 43,407.63
240 Tuition Reimbursement 51,526.10
260 Workers' Compensation 993.75
270 Group Insurance – Self-Insurance 36,598.70
299 All Other Employee Benefits 3,383.25

Total Personnel Services – Employee Benefits \$146,599.79

300 Purchased Professional and Technical Services
322 Professional Educational Services – lus 5,467.00
330 Other Professional Services 4,266.00
340 Technical Services 40.42
360 Employee Training and Development Services 24,162.12
390 Other Purchased Professional and Technical Services 3,187.50

Total Purchased Professional and Technical Services \$37,123.04

500 Other Purchased Services
549 Other Advertising/Public Relations 5,241.41
580 Travel 8,417.64

Total Other Purchased Services \$13,659.05

600 Supplies
610 General Supplies 3,740.99
630 Food 560.69
650 Supplies & Fees – Technology Related 317.99

Total Supplies \$4,619.67

700 Property
752 Capital Equipment – Original and Additional 8,137.75

Total Property \$8,137.75

800 Other Objects
810 Dues and Fees 604.19

Total Other Objects \$604.19

Total 2830 Staff Services \$350,175.47

General Fund (10)

2831 Supervision of Staff Services

Elementary Secondary Federal Total

100 Personnel Services – Salaries

100 Personnel Services – Salaries 129,709.03

Total Personnel Services – Salaries \$129,709.03

200 Personnel Services – Employee Benefits

210 Group Insurance – Contracted Provider 176.40

220 Social Security Contributions 9,770.15

230 PSERS Retirement Contributions 43,361.60

260 Workers' Compensation 924.45

270 Group Insurance – Self-Insurance 36,598.70

299 All Other Employee Benefits 3,383.25

Total Personnel Services – Employee Benefits \$94,214.55

300 Purchased Professional and Technical Services

322 Professional Educational Services – Ius 5,467.00

340 Technical Services 40.42

390 Other Purchased Professional and Technical Services 3,187.50

Total Purchased Professional and Technical Services \$8,694.92

500 Other Purchased Services

549 Other Advertising/Public Relations 5,241.41

580 Travel 225.37

Total Other Purchased Services \$5,466.78

600 Supplies

610 General Supplies 3,740.99

630 Food 436.69

650 Supplies & Fees – Technology Related 317.99

Total Supplies \$4,495.67

700 Property

752 Capital Equipment – Original and Additional 8,137.75

Total Property \$8,137.75

800 Other Objects

810 Dues and Fees 604.19

Total Other Objects \$604.19

Total 2831 Supervision of Staff Services \$251,322.89

General Fund (10)

	<u>Elementary</u>	<u>Secondary</u>	<u>Federal</u>	<u>Total</u>
2834 Staff Development Services – Non-Instructional, Certified Staff Only				
200 Personnel Services – Employee Benefits				
240 Tuition Reimbursement				51,526.10
Total Personnel Services – Employee Benefits				\$51,526.10
300 Purchased Professional and Technical Services				
360 Employee Training and Development Services				16,037.89
Total Purchased Professional and Technical Services				\$16,037.89
500 Other Purchased Services				
580 Travel				6,742.22
Total Other Purchased Services				\$6,742.22
600 Supplies				
630 Food				124.00
Total Supplies				\$124.00
Total 2834 Staff Development Services – Non-Instructional, Certified Staff Only				\$74,430.21

General Fund (10)

2835 Health Services

Elementary

Secondary

Federal

Total

300 Purchased Professional and Technical Services

330 Other Professional Services

4,266.00

Total Purchased Professional and Technical Services

\$4,266.00

Total 2835 Health Services

\$4,266.00

General Fund (10)

2836 Staff Development Services – Non-Instructional, Non-Certified Staff Only	<u>Elementary</u>	<u>Secondary</u>	<u>Federal</u>	<u>Total</u>
100 Personnel Services – Salaries				
100 Personnel Services – Salaries				9,722.95
Total Personnel Services – Salaries				\$9,722.95
200 Personnel Services – Employee Benefits				
220 Social Security Contributions				743.81
230 PSERS Retirement Contributions				46.03
260 Workers' Compensation				69.30
Total Personnel Services – Employee Benefits				\$859.14
300 Purchased Professional and Technical Services				
360 Employee Training and Development Services				8,124.23
Total Purchased Professional and Technical Services				\$8,124.23
500 Other Purchased Services				
580 Travel				1,450.05
Total Other Purchased Services				\$1,450.05
Total 2836 Staff Development Services – Non-Instructional, Non-Certified Staff Only				\$20,156.37

LEA : 113361303 Cocalico SD

Printed 11/5/2019 7:06:37 AM

General Fund (10)

2900 Other Support Services

Elementary

Secondary

Federal

Total

500 Other Purchased Services

595 IU Payments By Withholding

23,607.27

Total Other Purchased Services

\$23,607.27

Total 2900 Other Support Services

\$23,607.27

LEA : 113361303 Cocalico SD

Printed 11/5/2019 7:06:37 AM

General Fund (10)

2910 Support Services Not Listed Elsewhere In the 2000 Series

Elementary

Secondary

Federal

Total

500 Other Purchased Services

595 IU Payments By Withholding

23,607.27

Total Other Purchased Services

\$23,607.27

Total 2910 Support Services Not Listed Elsewhere In the 2000 Series

\$23,607.27

General Fund (10)

3000 Operation of Non-Instructional Services

Total

100 Personnel Services – Salaries

100 Personnel Services – Salaries 562,672.62

Total Personnel Services – Salaries \$562,672.62

200 Personnel Services – Employee Benefits

210 Group Insurance – Contracted Provider 340.20

220 Social Security Contributions 42,494.94

230 PSERS Retirement Contributions 172,723.26

250 Unemployment Compensation 477.62

260 Workers' Compensation 4,010.24

270 Group Insurance – Self-Insurance 16,469.43

299 All Other Employee Benefits 597.63

Total Personnel Services – Employee Benefits \$237,113.32

300 Purchased Professional and Technical Services

329 Professional Educational Services – Other 21,525.52

330 Other Professional Services 109,496.12

390 Other Purchased Professional and Technical Services 13,914.87

Total Purchased Professional and Technical Services \$144,936.51

400 Purchased Property Services

430 Repairs and Maintenance Services 8,577.32

Total Purchased Property Services \$8,577.32

500 Other Purchased Services

510 Student Transportation Services 86,232.55

520 Insurance – General 31,955.00

530 Communications 494.22

550 Printing and Binding 449.79

580 Travel 8,434.59

Total Other Purchased Services \$127,566.15

600 Supplies

610 General Supplies 70,593.29

630 Food 2,203.51

650 Supplies & Fees – Technology Related 4,308.98

Total Supplies \$77,105.78

700 Property

752 Capital Equipment – Original and Additional 1,687.00

762 Capitalized Equipment - Replacement 3,847.19

766 Capitalized Technology Equipment – Replacement 1,126.09

Total Property \$6,660.28

800 Other Objects

810 Dues and Fees 3,095.80

890 Miscellaneous Expenditures 12,552.42

Total Other Objects \$15,648.22

Total 3000 Operation of Non-Instructional Services

\$1,180,280.20

General Fund (10)

3200 Student Activities

Elementary Secondary Federal Total

100	<u>Personnel Services – Salaries</u>				
	100 Personnel Services – Salaries				551,635.87
Total Personnel Services – Salaries					\$551,635.87
200	<u>Personnel Services – Employee Benefits</u>				
	210 Group Insurance – Contracted Provider				340.20
	220 Social Security Contributions				41,682.93
	230 PSERS Retirement Contributions				169,384.56
	250 Unemployment Compensation				477.62
	260 Workers' Compensation				3,931.58
	270 Group Insurance – Self-Insurance				16,469.43
	299 All Other Employee Benefits				597.63
Total Personnel Services – Employee Benefits					\$232,883.95
300	<u>Purchased Professional and Technical Services</u>				
	329 Professional Educational Services – Other				21,525.52
	330 Other Professional Services				109,496.12
	390 Other Purchased Professional and Technical Services				13,764.87
Total Purchased Professional and Technical Services					\$144,786.51
400	<u>Purchased Property Services</u>				
	430 Repairs and Maintenance Services				8,577.32
Total Purchased Property Services					\$8,577.32
500	<u>Other Purchased Services</u>				
	510 Student Transportation Services				86,232.55
	520 Insurance – General				31,955.00
	530 Communications				494.22
	550 Printing and Binding				449.79
	580 Travel				8,434.59
Total Other Purchased Services					\$127,566.15
600	<u>Supplies</u>				
	610 General Supplies				69,346.99
	630 Food				1,646.31
	650 Supplies & Fees – Technology Related				4,308.98
Total Supplies					\$75,302.28
700	<u>Property</u>				
	752 Capital Equipment – Original and Additional				1,687.00
	762 Capitalized Equipment - Replacement				3,847.19
	766 Capitalized Technology Equipment – Replacement				1,126.09
Total Property					\$6,660.28
800	<u>Other Objects</u>				
	810 Dues and Fees				3,095.80
	890 Miscellaneous Expenditures				12,552.42
Total Other Objects					\$15,648.22
Total 3200 Student Activities					\$1,163,060.58

LEA : 113361303 Cocalico SD

Printed 11/5/2019 7:06:45 AM

General Fund (10)

	<u>Elementary</u>	<u>Secondary</u>	<u>Federal</u>	<u>Total</u>
3300 Community Services				
100 Personnel Services – Salaries				
100 Personnel Services – Salaries			624.75	11,036.75
Total Personnel Services – Salaries			\$624.75	\$11,036.75
200 Personnel Services – Employee Benefits				
220 Social Security Contributions			44.73	812.01
230 PSERS Retirement Contributions			104.44	3,338.70
260 Workers’ Compensation			4.45	78.66
Total Personnel Services – Employee Benefits			\$153.62	\$4,229.37
300 Purchased Professional and Technical Services				
390 Other Purchased Professional and Technical Services				150.00
Total Purchased Professional and Technical Services				\$150.00
600 Supplies				
610 General Supplies			1,142.58	1,246.30
630 Food			425.20	557.20
Total Supplies			\$1,567.78	\$1,803.50
Total 3300 Community Services			\$2,346.15	\$17,219.62

LEA : 113361303 Cocalico SD

Printed 11/5/2019 7:06:51 AM

General Fund (10)

5000 Other Expenditures and Financing Uses

Total

800 Other Objects

830 Interest	9,981.91
880 Refunds of Prior Years' Receipts	4,145.79

Total Other Objects	\$14,127.70
----------------------------	--------------------

900 Other Uses of Funds

910 Redemption of Principal	569,828.92
932 Capital Reserve Fund Transfers Applicable To Fund 32	3,487,730.02
939 Other Fund Transfers	3,529,381.99

Total Other Uses of Funds	\$7,586,940.93
----------------------------------	-----------------------

Total 5000 Other Expenditures and Financing Uses	\$7,601,068.63
---	-----------------------

LEA : 113361303 Cocalico SD

Printed 11/5/2019 7:06:51 AM

General Fund (10)

	<u>Elementary</u>	<u>Secondary</u>	<u>Federal</u>	<u>Total</u>
5100 Debt Service / Other Expenditures and Financing Uses				
800 Other Objects				
830 Interest				9,981.91
880 Refunds of Prior Years' Receipts				4,145.79
Total Other Objects				\$14,127.70
900 Other Uses of Funds				
910 Redemption of Principal				569,828.92
Total Other Uses of Funds				\$569,828.92
Total 5100 Debt Service / Other Expenditures and Financing Uses				\$583,956.62

LEA : 113361303 Cocalico SD

Printed 11/5/2019 7:06:51 AM

General Fund (10)

	<u>Elementary</u>	<u>Secondary</u>	<u>Federal</u>	<u>Total</u>
5110 Debt Service				
800 Other Objects				
830 Interest				9,981.91
Total Other Objects				\$9,981.91
900 Other Uses of Funds				
910 Redemption of Principal				569,828.92
Total Other Uses of Funds				\$569,828.92
Total 5110 Debt Service				\$579,810.83

General Fund (10)

5130 Refund of Prior Year Revenues / Receipts	<u>Elementary</u>	<u>Secondary</u>	<u>Federal</u>	<u>Total</u>
800 <u>Other Objects</u>				
880 Refunds of Prior Years' Receipts				4,145.79
Total Other Objects				\$4,145.79
Total 5130 Refund of Prior Year Revenues / Receipts				\$4,145.79

LEA : 113361303 Cocalico SD

Printed 11/5/2019 7:06:51 AM

General Fund (10)

5200 Interfund Transfers – Out

Elementary

Secondary

Federal

Total

900 Other Uses of Funds

932 Capital Reserve Fund Transfers Applicable To Fund 32

3,487,730.02

939 Other Fund Transfers

3,529,381.99

Total Other Uses of Funds

\$7,017,112.01

Total 5200 Interfund Transfers – Out

\$7,017,112.01

LEA : 113361303 Cocalico SD

Printed 11/5/2019 7:06:51 AM

General Fund (10)

5230 Capital Projects Fund Transfers

Elementary

Secondary

Federal

Total

900 Other Uses of Funds

932 Capital Reserve Fund Transfers Applicable To Fund 32

3,487,730.02

Total Other Uses of Funds

\$3,487,730.02

Total 5230 Capital Projects Fund Transfers

\$3,487,730.02

LEA : 113361303 Cocalico SD

Printed 11/5/2019 7:06:51 AM

General Fund (10)

5240 Debt Service Fund Transfers

Elementary

Secondary

Federal

Total

900 Other Uses of Funds

939 Other Fund Transfers

3,529,381.99

Total Other Uses of Funds

\$3,529,381.99

Total 5240 Debt Service Fund Transfers

\$3,529,381.99

LEA : 113361303 Cocalico SD

Printed 11/5/2019 7:06:40 AM

Capital Reserve Fund - § 1431 (32)

2000 Support Services

Total

400 Purchased Property Services

430 Repairs and Maintenance Services

1,039,276.36

Total Purchased Property Services

\$1,039,276.36

500 Other Purchased Services

529 Other Insurance

1,933.00

Total Other Purchased Services

\$1,933.00

600 Supplies

610 General Supplies

7,388.09

Total Supplies

\$7,388.09

700 Property

756 Capitalized Technology Equipment – Original

94,713.85

762 Capitalized Equipment - Replacement

88,462.41

Total Property

\$183,176.26

Total 2000 Support Services

\$1,231,773.71

LEA : 113361303 Cocalico SD

Printed 11/5/2019 7:06:40 AM

Capital Reserve Fund - § 1431 (32)

	<u>Elementary</u>	<u>Secondary</u>	<u>Federal</u>	<u>Total</u>
2600 Operation and Maintenance of Plant Services				
400 <u>Purchased Property Services</u>				
430 Repairs and Maintenance Services				1,039,276.36
Total Purchased Property Services				\$1,039,276.36
500 <u>Other Purchased Services</u>				
529 Other Insurance				1,933.00
Total Other Purchased Services				\$1,933.00
600 <u>Supplies</u>				
610 General Supplies	3,064.00	3,064.00		6,128.00
Total Supplies	\$3,064.00	\$3,064.00		\$6,128.00
700 <u>Property</u>				
762 Capitalized Equipment - Replacement				88,462.41
Total Property				\$88,462.41
Total 2600 Operation and Maintenance of Plant Services	\$3,064.00	\$3,064.00		\$1,135,799.77

LEA : 113361303 Cocalico SD

Printed 11/5/2019 7:06:40 AM

Capital Reserve Fund - § 1431 (32)

	<u>Elementary</u>	<u>Secondary</u>	<u>Federal</u>	<u>Total</u>
2620 Operation of Buildings Services				
400 <u>Purchased Property Services</u>				
430 Repairs and Maintenance Services				1,039,276.36
Total Purchased Property Services				\$1,039,276.36
500 <u>Other Purchased Services</u>				
529 Other Insurance				1,933.00
Total Other Purchased Services				\$1,933.00
600 <u>Supplies</u>				
610 General Supplies	3,064.00	3,064.00		6,128.00
Total Supplies	\$3,064.00	\$3,064.00		\$6,128.00
700 <u>Property</u>				
762 Capitalized Equipment - Replacement				88,462.41
Total Property				\$88,462.41
Total 2620 Operation of Buildings Services	\$3,064.00	\$3,064.00		\$1,135,799.77

LEA : 113361303 Cocalico SD

Printed 11/5/2019 7:06:40 AM

Capital Reserve Fund - § 1431 (32)

2800 Support Services – Central

Elementary

Secondary

Federal

Total

600 Supplies

610 General Supplies

1,260.09

Total Supplies

\$1,260.09

700 Property

756 Capitalized Technology Equipment – Original

94,713.85

Total Property

\$94,713.85

Total 2800 Support Services – Central

\$95,973.94

LEA : 113361303 Cocalico SD

Printed 11/5/2019 7:06:40 AM

Capital Reserve Fund - § 1431 (32)

2810 Planning, Research, Development and Evaluation Services

Elementary

Secondary

Federal

Total

600 Supplies

610 General Supplies

1,260.09

Total Supplies

\$1,260.09

700 Property

756 Capitalized Technology Equipment – Original

94,713.85

Total Property

\$94,713.85

Total 2810 Planning, Research, Development and Evaluation Services

\$95,973.94

Capital Reserve Fund - § 1431 (32)

4000 Facilities Acquisition, Construction and Improvement Services

Total

300 Purchased Professional and Technical Services

390 Other Purchased Professional and Technical Services 464,463.80

Total Purchased Professional and Technical Services \$464,463.80

400 Purchased Property Services

450 Construction Services 1,099,315.23

Total Purchased Property Services \$1,099,315.23

500 Other Purchased Services

549 Other Advertising/Public Relations 3,889.50

Total Other Purchased Services \$3,889.50

Total 4000 Facilities Acquisition, Construction and Improvement Services \$1,567,668.53

LEA : 113361303 Cocalico SD

Printed 11/5/2019 7:06:47 AM

Capital Reserve Fund - § 1431 (32)

	<u>Elementary</u>	<u>Secondary</u>	<u>Federal</u>	<u>Total</u>
4400 Architecture and Engineering Services / Educational Specifications – Improvements				
300 <u>Purchased Professional and Technical Services</u>				
390 Other Purchased Professional and Technical Services				464,463.80
Total Purchased Professional and Technical Services				\$464,463.80
500 <u>Other Purchased Services</u>				
549 Other Advertising/Public Relations				3,889.50
Total Other Purchased Services				\$3,889.50
Total 4400 Architecture and Engineering Services / Educational Specifications – Improvements				\$468,353.30

LEA : 113361303 Cocalico SD

Printed 11/5/2019 7:06:47 AM

Capital Reserve Fund - § 1431 (32)

4600 Existing Building Improvement Services

Elementary

Secondary

Federal

Total

400 Purchased Property Services

450 Construction Services

1,099,315.23

Total Purchased Property Services

\$1,099,315.23

Total 4600 Existing Building Improvement Services

\$1,099,315.23

LEA : 113361303 Cocalico SD

Printed 11/5/2019 7:06:41 AM

Debt Service Fund (40)

2000 Support Services

800 Other Objects

890 Miscellaneous Expenditures

Total Other Objects

Total 2000 Support Services

Total

500.00

\$500.00

\$500.00

LEA : 113361303 Cocalico SD

Printed 11/5/2019 7:06:41 AM

Debt Service Fund (40)

2500 Support Services – Business

Elementary

Secondary

Federal

Total

800 Other Objects

890 Miscellaneous Expenditures

500.00

Total Other Objects

\$500.00

Total 2500 Support Services – Business

\$500.00

LEA : 113361303 Cocalico SD

Printed 11/5/2019 7:06:41 AM

Debt Service Fund (40)

2510 Fiscal Services

Elementary

Secondary

Federal

Total

800 Other Objects

890 Miscellaneous Expenditures

500.00

Total Other Objects

\$500.00

Total 2510 Fiscal Services

\$500.00

LEA : 113361303 Cocalico SD

Printed 11/5/2019 7:06:41 AM

Debt Service Fund (40)

2515 Financial Accounting Services

Elementary

Secondary

Federal

Total

800 Other Objects

890 Miscellaneous Expenditures

500.00

Total Other Objects

\$500.00

Total 2515 Financial Accounting Services

\$500.00

LEA : 113361303 Cocalico SD

Printed 11/5/2019 7:06:52 AM

Debt Service Fund (40)

5000 Other Expenditures and Financing Uses

Total

800 Other Objects

830 Interest 143,881.99

Total Other Objects \$143,881.99

900 Other Uses of Funds

910 Redemption of Principal 3,385,000.00

Total Other Uses of Funds \$3,385,000.00

Total 5000 Other Expenditures and Financing Uses \$3,528,881.99

Debt Service Fund (40)

5100 Debt Service / Other Expenditures and Financing Uses	<u>Elementary</u>	<u>Secondary</u>	<u>Federal</u>	<u>Total</u>
800 <u>Other Objects</u>				
830 Interest				143,881.99
Total Other Objects				\$143,881.99
900 <u>Other Uses of Funds</u>				
910 Redemption of Principal				3,385,000.00
Total Other Uses of Funds				\$3,385,000.00
Total 5100 Debt Service / Other Expenditures and Financing Uses				\$3,528,881.99

LEA : 113361303 Cocalico SD

Printed 11/5/2019 7:06:52 AM

Debt Service Fund (40)

	<u>Elementary</u>	<u>Secondary</u>	<u>Federal</u>	<u>Total</u>
5110 Debt Service				
800 Other Objects				
830 Interest				143,881.99
Total Other Objects				\$143,881.99
900 Other Uses of Funds				
910 Redemption of Principal				3,385,000.00
Total Other Uses of Funds				\$3,385,000.00
Total 5110 Debt Service				\$3,528,881.99

	<u>General Fund(10)</u>	<u>Public Purpose Trust(27)</u>	<u>Other Compt Approved (28)</u>	<u>Athletic / Activity(29)</u>	<u>Capital Reserve (690, 1850)(31)</u>
1000 Instruction					
1100 Regular Programs - Elementary / Secondary	24,939,419.62				
1200 Special Programs - Elementary / Secondary	7,724,192.21				
1300 Vocational Education	965,785.19				
1400 Other Instructional Programs - Elementary / Secondary	161,738.62				
1800 Pre-Kindergarten	118,082.29				
Total Instruction	\$33,909,217.93				
2000 Support Services					
2100 Support Services - Students	2,013,152.35				
2200 Support Services - Instructional Staff	2,387,930.15				
2300 Support Services - Administration	3,430,204.29				
2400 Support Services - Pupil Health	595,463.57				
2500 Support Services - Business	659,733.15				
2600 Operation and Maintenance of Plant Services	3,551,127.83				
2700 Student Transportation Services	2,451,282.53				
2800 Support Services - Central	1,338,085.97				
2900 Other Support Services	23,607.27				
Total Support Services	\$16,450,587.11				
3000 Operation of Non-Instructional Services					
3200 Student Activities	1,163,060.58				
3300 Community Services	17,219.62				
Total Operation of Non-Instructional Services	\$1,180,280.20				
4000 Facilities Acquisition, Construction and Improvement Services					
4400 Architecture and Engineering Services / Educational Specifications - Improvements					
4600 Existing Building Improvement Services					
Total Facilities Acquisition, Construction and Improvement					
5000 Other Expenditures and Financing Uses					
5100 Debt Service / Other Expenditures and Financing Uses	583,956.62				
5200 Interfund Transfers - Out	7,017,112.01				
Total Other Expenditures and Financing Uses	\$7,601,068.63				
TOTAL ACTUAL EXPENDITURES & OTHER FINANCING USES	\$59,141,153.87				

	<u>Capital Reserve (1431)(32)</u>	<u>Other Capital Projects Fund(39)</u>	<u>Debt Service(40)</u>	<u>Permanent(90)</u>	<u>Total</u>
1000 Instruction					
1100 Regular Programs - Elementary / Secondary					24,939,419.62
1200 Special Programs - Elementary / Secondary					7,724,192.21
1300 Vocational Education					965,785.19
1400 Other Instructional Programs - Elementary / Secondary					161,738.62
1800 Pre-Kindergarten					118,082.29
Total Instruction					\$33,909,217.93
2000 Support Services					
2100 Support Services - Students					2,013,152.35
2200 Support Services - Instructional Staff					2,387,930.15
2300 Support Services - Administration					3,430,204.29
2400 Support Services - Pupil Health					595,463.57
2500 Support Services - Business			500.00		660,233.15
2600 Operation and Maintenance of Plant Services	1,135,799.77				4,686,927.60
2700 Student Transportation Services					2,451,282.53
2800 Support Services - Central	95,973.94				1,434,059.91
2900 Other Support Services					23,607.27
Total Support Services	\$1,231,773.71		\$500.00		\$17,682,860.82
3000 Operation of Non-Instructional Services					
3200 Student Activities					1,163,060.58
3300 Community Services					17,219.62
Total Operation of Non-Instructional Services					\$1,180,280.20
4000 Facilities Acquisition, Construction and Improvement Services					
4400 Architecture and Engineering Services / Educational Specifications - Improvements	468,353.30				468,353.30
4600 Existing Building Improvement Services	1,099,315.23				1,099,315.23
Total Facilities Acquisition, Construction and Improvement	\$1,567,668.53				\$1,567,668.53
5000 Other Expenditures and Financing Uses					
5100 Debt Service / Other Expenditures and Financing Uses			3,528,881.99		4,112,838.61
5200 Interfund Transfers - Out					7,017,112.01
Total Other Expenditures and Financing Uses			\$3,528,881.99		\$11,129,950.62
TOTAL ACTUAL EXPENDITURES & OTHER FINANCING USES	\$2,799,442.24		\$3,529,381.99		\$65,469,978.10

PSERS Salary Data (Salary Data should relate to the General Fund only)

Amount Description	Amount
Total Salary Base for salaries subject to PSERS withholding	23,059,029.57
Total Federally Funded salaries subject to PSERS withholding	348,559.11
	<hr/>

Title I Expenditure Data

Amount Description	Amount
Expenditures Funded with Current Title I Funds	458,469.00
Expenditures Funded with Carry over Title I Funds	
Total Title I Expenditure Data	<hr/> \$458,469.00 <hr/>

Benefits for Staff Relative to Collective Bargaining Agreements

	OBJECT	COVERED	NOT COVERED	TOTAL
10 General Fund				
	211 Medical Insurance			
	212 Dental Insurance			
	215 Eye Care Insurance			
	216 Prescription Insurance			
	271 Self-Insurance Medical Benefits	3,629,917.80	1,442,908.32	5,072,826.12
	272 Self-Insurance Dental Benefits	226,594.23	90,524.07	317,118.30
	275 Self-Insurance Eye Care Benefits	87,937.07	36,040.38	123,977.45
	276 Self-Insurance Prescription Benefits	811,922.57	319,581.65	1,131,504.22
	FUND TOTAL	\$4,756,371.67	\$1,889,054.42	\$6,645,426.09
50 Enterprise Fund				
	211 Medical Insurance			
	212 Dental Insurance			
	215 Eye Care Insurance			
	216 Prescription Insurance			
	271 Self-Insurance Medical Benefits		125,167.53	125,167.53
	272 Self-Insurance Dental Benefits		6,587.76	6,587.76
	275 Self-Insurance Eye Care Benefits		1,646.94	1,646.94
	276 Self-Insurance Prescription Benefits		31,291.89	31,291.89
	FUND TOTAL		\$164,694.12	\$164,694.12
60 Internal Service Fund	No Self Insurance data to report			
	211 Medical Insurance			
	212 Dental Insurance			
	215 Eye Care Insurance			
	216 Prescription Insurance			
	271 Self-Insurance Medical Benefits			
	272 Self-Insurance Dental Benefits			
	275 Self-Insurance Eye Care Benefits			
	276 Self-Insurance Prescription Benefits			
	FUND TOTAL			
Total of All Funds		\$4,756,371.67	\$2,053,748.54	\$6,810,120.21

LEA : 113361303 Cocalico SD

Printed 11/5/2019 7:07:13 AM

Function	Special Education (Prior Year)	Nonspecial Education (Prior Year)	Total (Prior Year)	Special Education (Current Year)	Nonspecial Education (Current Year)	Total (Current Year)
2120 Guidance Services		1,125,516.09	1,125,516.09		1,204,997.05	1,204,997.05
2140 Psychological Services	400,466.12		400,466.12	465,444.46		465,444.46
2150 Speech Pathology and Audiology Services						
2160 Social Work Services	126,528.97		126,528.97	238,111.61		238,111.61
2260 Instruction and Curriculum Development Services	341,852.52	283,424.52	625,277.04	365,205.30	364,334.39	729,539.69
2350 Legal and Accounting Services	5,709.83	21,736.25	27,446.08	2,670.27	17,319.00	19,989.27
2420 Medical Services		3,825.33	3,825.33		5,719.09	5,719.09
2440 Nursing Services		527,528.53	527,528.53		589,590.48	589,590.48
2700 Student Transportation Services	662,667.37	1,746,108.32	2,408,775.69	710,258.41	1,741,024.12	2,451,282.53
Total	\$1,537,224.81	\$3,708,139.04	\$5,245,363.85	\$1,781,690.05	\$3,922,984.13	\$5,704,674.18

(PRINCIPAL AMOUNTS ONLY)

GOVERNMENTAL FUNDS/ ACTIVITIES

	Short-Term Borrowing	General Obligation Bonds/Notes	Authority Building Obligations	Other Long-Term Debt	Other Post-Employment Benefits (OPEB)	Compensated Absences	Net Pension Liability	Total
1. Debt at Beginning of Fiscal Year		5,730,000.00		857,534.48	6,905,000.00	3,502,935.00	82,136,000.00	99,131,469.48
2. Additional Debt Incurred During Year				339,500.00		429,104.00		768,604.00
3. Retirements and Repayments		3,385,000.00		569,886.00	517,000.00	231,031.00	3,289,000.00	7,991,917.00
4. Debt at End of Fiscal Year		2,345,000.00		627,148.48	6,388,000.00	3,701,008.00	78,847,000.00	91,908,156.48
5. Accreted Interest at End Of Fiscal Year								
6. Total Debt and Accreted Interest		2,345,000.00		627,148.48	6,388,000.00	3,701,008.00	78,847,000.00	91,908,156.48
7. Current Portion P&I - Due within 1 year		1,201,715.00		374,958.11				1,576,673.11
8. Interest Paid during current fiscal year		143,882.00		9,981.51				153,863.51

(PRINCIPAL AMOUNTS ONLY)

PROPRIETARY FUNDS

	Short-Term Borrowing	General Obligation Bonds/Notes	Authority Building Obligations	Other Long-Term Debt	Other Post-Employment Benefits (OPEB)	Compensated Absences	Net Pension Liability	Total
1. Debt at Beginning of Fiscal Year					141,000.00	74,156.00	1,676,000.00	1,891,156.00
2. Additional Debt Incurred During Year						11,578.00		11,578.00
3. Retirements and Repayments					11,000.00	4,700.00	67,000.00	82,700.00
4. Debt at End of Fiscal Year					130,000.00	81,034.00	1,609,000.00	1,820,034.00
5. Accreted Interest at End Of Fiscal Year								
6. Total Debt and Accreted Interest					130,000.00	81,034.00	1,609,000.00	1,820,034.00
7. Current Portion P&I - Due within 1 year								
8. Interest Paid during current fiscal year								

Total Principal and Interest Payments Made by Your School - All Funds

Function	Fund		Principal (910)	Principal (920)	Interest (830)	Total (Principal +Interest)	Misc Other Uses (990)
5110	10	General Fund	569,828.92		9,981.91	579,810.83	
5110	20	Special Revenue Funds					
5110	30	Capital Projects Funds					
5110	40	Debt Service Fund	3,385,000.00		143,881.99	3,528,881.99	
5110	90	Permanent Fund					
5120	10	General Fund					
5120	20	Special Revenue Funds					
5120	30	Capital Projects Funds					
5120	40	Debt Service Fund					

Total Debt Payments - Governmental Funds			\$3,954,828.92		\$153,863.90	\$4,108,692.82	
---	--	--	-----------------------	--	---------------------	-----------------------	--

Function	Fund		Principal (910)	Principal (920)	Interest (830)	Total (Principal +Interest)
5110	50	Enterprise Fund				
5110	60	Internal Service Fund				
5120	50	Enterprise Fund				
5120	60	Internal Service Fund				

Total Debt Payments - Proprietary Funds						
--	--	--	--	--	--	--

Debt Details
Governmental Funds/ Activities

Debt Category	Debt Issue Date (MM/YYYY)	Principal Amounts Only			Debt at End of Fiscal Year	Current Portion Due Within One Year (Principal and Interest)	Interest Paid During Fiscal Year
		Debt at Beginning of Fiscal Year	Additions	Reductions / Repayments			
General Obligation Bonds/Notes – CIB	04/2016	2,270,000.00		745,000.00	1,525,000.00	780,315.00	37,682.00
General Obligation Bonds/Notes – CIB	09/2014	3,460,000.00		2,640,000.00	820,000.00	421,400.00	106,200.00
Other Long Term Debt/Liabilities		857,534.48	339,500.00	569,886.00	627,148.48	374,958.11	9,981.51
Compensated Absences		3,502,935.00	429,104.00	231,031.00	3,701,008.00		
Other Post-Employment Benefits (OPEB)		6,905,000.00		517,000.00	6,388,000.00		
Net Pension Liability		82,136,000.00		3,289,000.00	78,847,000.00		
Totals for Debt Entered:		\$99,131,469.48	\$768,604.00	\$7,991,917.00	\$91,908,156.48	\$1,576,673.11	\$153,863.51

Bond Details
Proprietary Funds

Debt Category	Debt Issue Date (MM/YYYY)	Principal Amounts Only			Debt at End of Fiscal Year	Current Portion Due Within One Year (Principal and Interest)	Interest Paid During Fiscal Year
		Debt at Beginning of Fiscal Year	Additions	Reductions / Repayments			
Compensated Absences		74,156.00	11,578.00	4,700.00	81,034.00		
Other Post-Employment Benefits (OPEB)		141,000.00		11,000.00	130,000.00		
Net Pension Liability		1,676,000.00		67,000.00	1,609,000.00		
Totals for Debt Entered:		\$1,891,156.00	\$11,578.00	\$82,700.00	\$1,820,034.00		

General Fund (10)

Section 1: Tuition/Purchased Services as Reported within Expenditure Detail

	Amount
Tuition Reported in General Fund Expenditures 1000-560	2,607,065.19
Purchased Services in General Fund Expenditures 1000-594 and 1000-597	1,002.79
Section 1 Total	\$2,608,067.98

Section 2: Tuition Paid to Institution Types During Fiscal Year

	Tuition Paid For Nonspecial Education	Tuition Paid For Special Education	Total
1 1306 Institutions			
2 Institutionalized Children's Programs			
3 Juveniles Incarcerated in Adult Facilities			
4 Residential Treatment Facilities			
5 Other Local Education Agencies	3,791.76	346,872.99	350,664.75
6 Brick and Mortar Charter Schools	28,814.10		28,814.10
7 Cyber Charter Schools	565,908.92	179,116.89	745,025.81
8 Career and Technology Centers	903,457.82		903,457.82
9 Approved Private Schools	25,719.92	365,477.88	391,197.80
10 PA Chartered Schools for the Deaf and Blind			
11 Private Residential Rehabilitative Institutions	5,811.11	114,014.61	119,825.72
12 Juvenile Detention Centers		19,876.93	19,876.93
13 Special Program Jointures			
14 Other Tuition Not Included Elsewhere In This Section	10,866.34	38,338.71	49,205.05
Section 2 Total	\$1,544,369.97	\$1,063,698.01	\$2,608,067.98

Food Service / Cafeteria Operations Fund (51)

3000 Operation of Non-Instructional Services

Total

100 Personnel Services – Salaries

100 Personnel Services – Salaries 512,845.00

Total Personnel Services – Salaries \$512,845.00

200 Personnel Services – Employee Benefits

210 Group Insurance – Contracted Provider 458.00

220 Social Security Contributions 37,030.00

230 PSERS Retirement Contributions 169,860.00

260 Workers' Compensation 3,617.00

270 Group Insurance – Self-Insurance 164,694.00

280 Other Post-Employment Benefits (OPEB) 2,000.00

299 All Other Employee Benefits 3,383.00

Total Personnel Services – Employee Benefits \$381,042.00

300 Purchased Professional and Technical Services

329 Professional Educational Services – Other 2,310.00

Total Purchased Professional and Technical Services \$2,310.00

400 Purchased Property Services

430 Repairs and Maintenance Services 618.00

Total Purchased Property Services \$618.00

500 Other Purchased Services

530 Communications 678.00

580 Travel 46.00

Total Other Purchased Services \$724.00

600 Supplies

610 General Supplies 65,344.00

630 Food 755,315.00

650 Supplies & Fees – Technology Related 7,740.00

Total Supplies \$828,399.00

700 Property

740 Depreciation 4,305.00

Total Property \$4,305.00

800 Other Objects

810 Dues and Fees 443.00

Total Other Objects \$443.00

Total 3000 Operation of Non-Instructional Services \$1,730,686.00

Food Service / Cafeteria Operations Fund (51)

	<u>Elementary</u>	<u>Secondary</u>	<u>Federal</u>	<u>Total</u>
3100 Food Services				
100 Personnel Services – Salaries				
100 Personnel Services – Salaries				512,845.00
Total Personnel Services – Salaries				\$512,845.00
200 Personnel Services – Employee Benefits				
210 Group Insurance – Contracted Provider				458.00
220 Social Security Contributions				37,030.00
230 PSERS Retirement Contributions				169,860.00
260 Workers' Compensation				3,617.00
270 Group Insurance – Self-Insurance				164,694.00
280 Other Post-Employment Benefits (OPEB)				2,000.00
299 All Other Employee Benefits				3,383.00
Total Personnel Services – Employee Benefits				\$381,042.00
300 Purchased Professional and Technical Services				
329 Professional Educational Services – Other				2,310.00
Total Purchased Professional and Technical Services				\$2,310.00
400 Purchased Property Services				
430 Repairs and Maintenance Services				618.00
Total Purchased Property Services				\$618.00
500 Other Purchased Services				
530 Communications				678.00
580 Travel				46.00
Total Other Purchased Services				\$724.00
600 Supplies				
610 General Supplies				65,344.00
630 Food				755,315.00
650 Supplies & Fees – Technology Related				7,740.00
Total Supplies				\$828,399.00
700 Property				
740 Depreciation				4,305.00
Total Property				\$4,305.00
800 Other Objects				
810 Dues and Fees				443.00
Total Other Objects				\$443.00
Total 3100 Food Services				\$1,730,686.00

Internal Service Fund (60)

2000 Support Services

Total

200 Personnel Services – Employee Benefits

270 Group Insurance – Self-Insurance

6,935,193.00

Total Personnel Services – Employee Benefits

\$6,935,193.00

800 Other Objects

810 Dues and Fees

564,084.00

Total Other Objects

\$564,084.00

Total 2000 Support Services

\$7,499,277.00

Internal Service Fund (60)

2800 Support Services – Central

Elementary

Secondary

Federal

Total

200 Personnel Services – Employee Benefits

270 Group Insurance – Self-Insurance

6,935,193.00

Total Personnel Services – Employee Benefits

\$6,935,193.00

800 Other Objects

810 Dues and Fees

564,084.00

Total Other Objects

\$564,084.00

Total 2800 Support Services – Central

\$7,499,277.00

Internal Service Fund (60)

2830 Staff Services

Elementary

Secondary

Federal

Total

200 Personnel Services – Employee Benefits

270 Group Insurance – Self-Insurance

6,935,193.00

Total Personnel Services – Employee Benefits

\$6,935,193.00

800 Other Objects

810 Dues and Fees

564,084.00

Total Other Objects

\$564,084.00

Total 2830 Staff Services

\$7,499,277.00

Internal Service Fund (60)

2835 Health Services

Elementary

Secondary

Federal

Total

200 Personnel Services – Employee Benefits

270 Group Insurance – Self-Insurance

6,935,193.00

Total Personnel Services – Employee Benefits

\$6,935,193.00

800 Other Objects

810 Dues and Fees

564,084.00

Total Other Objects

\$564,084.00

Total 2835 Health Services

\$7,499,277.00

	<u>Food Service(51)</u>	<u>Child Care Operations(52)</u>	<u>Other Enterprise(58)</u>	<u>Internal Service(60)</u>	<u>Total</u>
2000 <u>Support Services</u>					
2800 Support Services - Central				7,499,277.00	7,499,277.00
Total Support Services				\$7,499,277.00	\$7,499,277.00
3000 <u>Operation of Non-Instructional Services</u>					
3100 Food Services	1,730,686.00				1,730,686.00
Total Operation of Non-Instructional Services	\$1,730,686.00				\$1,730,686.00
TOTAL ACTUAL EXPENDITURES & OTHER FINANCING USES	\$1,730,686.00			\$7,499,277.00	\$9,229,963.00

LEA : 113361303 Cocalico SD

Printed 11/5/2019 7:07:32 AM

Fund	School	School Number	Local Personnel	Local Nonpersonnel	State Personnel	State Nonpersonnel	Federal Personnel	Federal Nonpersonnel	Total	Explanation
10	Adamstown El Sch	2510	3,717,328.74	572,547.36	1,584,052.82	243,977.67	111,799.72	20,061.24	6,249,767.55	
	Cocalico MS	6289	6,871,064.26	1,168,250.42	2,927,943.53	497,822.62	23,454.61	7,917.19	11,496,452.63	
	Cocalico SHS	6290	9,176,242.06	1,567,888.97	3,910,241.20	668,119.26	27,767.46	11,078.14	15,361,337.09	
	Denver El Sch	2506	4,118,700.31	731,275.63	1,755,087.93	311,616.02	197,852.45	26,670.01	7,141,202.35	
	Reamstown El Sch	5053	3,510,933.16	553,327.48	1,496,102.15	235,787.58	141,519.95	18,557.52	5,956,227.84	
Total			27,394,268.53	4,593,289.86	11,673,427.63	1,957,323.15	502,394.19	84,284.10	46,204,987.46	